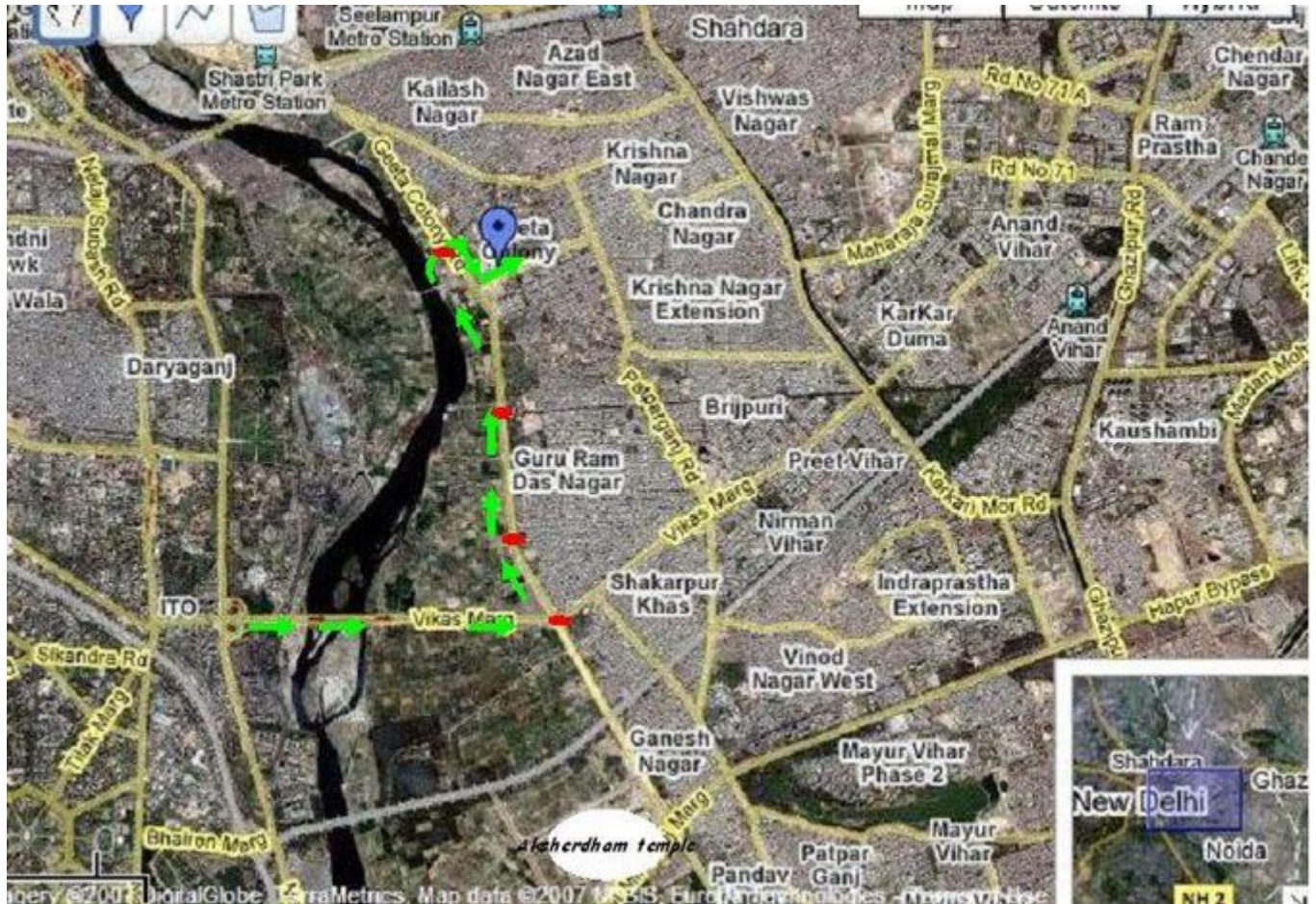


Nearest Metro Station - Shastri Park Metro Station. Take an autorickshaw or Cycle rickshaw it will take Rs.10-15/- and time of journey 5-7mins.

Those reaching by road details are below:

Guide through a Satellite Image



Green Arrows are marked as way from ITO red light to CNBC. (STEPS TO FOLLOW)

- Come straight through ITO redlight, below a fly over on ring road to cross Yamuna River.
- Take turn left from FIRST redlight after crossing the Yamuna bridge. (If you turn right you will reach Mayur Vihar through Akshardham temple, if you miss the light and go straight you will reach Vikas Marg)
- Cross two red lights and take U turn from third red light. (After taking U turn you will notice half of the road is blocked due to construction of Geeta Colony Bridge from shanti Van)
- Take left turn from first cut (Divider cut) around 100m after taking U turn.
- The order of buildings on your LEFT will be Sai Memorial Public School, Petrol Pump and then CNBC.

Line Diagram is shown below:

