

JAIKE ONE ARRIVAL (RNAV) (JAIKE.JAIKE1)

TETERBORO, NEW JERSEY

NEW YORK APP CON
 132.8 379.9
 TETERBORO ATIS ARR 108.4 114.2
 MORRISTOWN ATIS ARR 124.25
 ESSEX CO ATIS ARR 135.5
 WASHINGTON CENTER
 132.52

NOTE: RADAR REQUIRED.

NOTE: STAR applicable to Turboprop Aircraft Only.

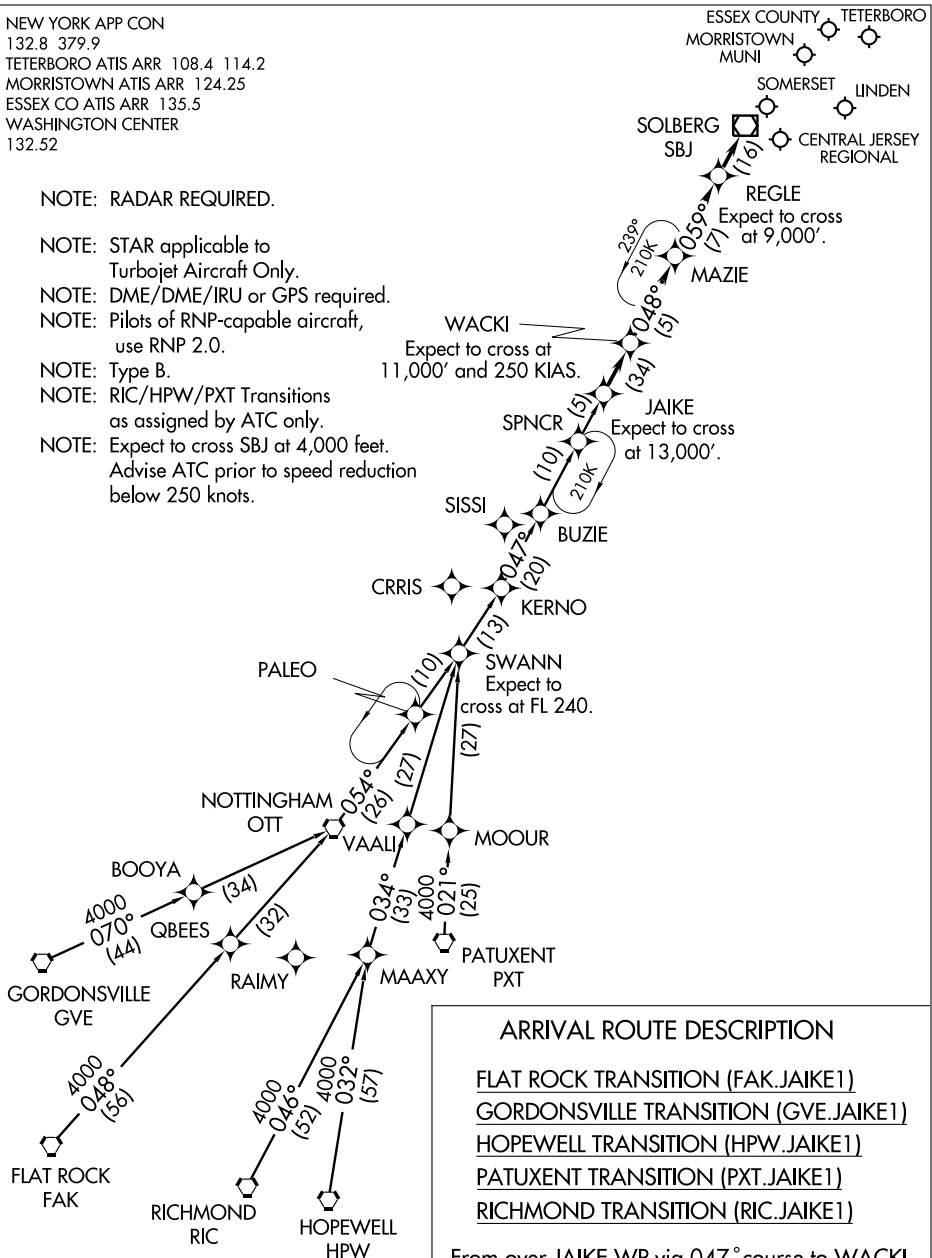
NOTE: DME/DME/IRU or GPS required.

NOTE: Pilots of RNP-capable aircraft, use RNP 2.0.

NOTE: Type B.

NOTE: RIC/HPW/PXT Transitions as assigned by ATC only.

NOTE: Expect to cross SBJ at 4,000 feet. Advise ATC prior to speed reduction below 250 knots.



NOTE: Chart not to scale.

ARRIVAL ROUTE DESCRIPTION

- FLAT ROCK TRANSITION (FAK.JAIKE1)
- GORDONSVILLE TRANSITION (GVE.JAIKE1)
- HOPEWELL TRANSITION (HPW.JAIKE1)
- PATUXENT TRANSITION (PXT.JAIKE1)
- RICHMOND TRANSITION (RIC.JAIKE1)

From over JAIKE WP via 047° course to WACKI WP, then via 048° course to MAZIE WP, then via 059° course to SBJ VOR/DME. Expect radar vectors to final approach course.

JAIKE ONE ARRIVAL (RNAV) (JAIKE.JAIKE1)

TETERBORO, NEW JERSEY