

# Toroidal Structure of the Assemblage Point and a naive model of Human Energy Field

Elena Evtimova

Sofia University St. Kliment Ohridski

Department for Language Teaching and International Students

Sofia, Bulgaria

e-mail: [aloniar@abv.bg](mailto:aloniar@abv.bg)

## Abstract

*Human Assemblage Point (AP) is practically proved to be the core vortex in formation and stabilization of the human energy fields. For healthy human it is located around the centre of the chest. Practitioners in removing its detrimental locations report for quick recovering from some traditionally non-manageable diseases. The aim of the report is to present a very simple description of this important part of the human being and thus to turn the attention of the scientific community to the existence of the AP, its investigation and further measurement with contemporary electronics.*

**1. Introduction.** The definition of the assemblage point given by the greatest expert at the field d-r Jon Whale [1, 2] is ‘the vortex or epicenter of human energy fields’ and when properly located and aligned this lead to ‘optimum mental and physical health (organ and glandular synergy)’. In his three papers [3 - 5] for the first time d-r Whale has given a comprehensive description about the facts of significance of the AP and the restoration of its proper location for human electromagnetic energy fields and the states of human consciousness. The "Off Center Map" presented first in the second paper [4] is of the most importance for the knowledge of the approximate locations for various symptoms. The circle on the map, given below, indicates the central beneficial for health position:

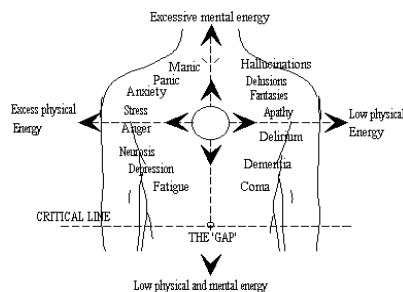


Fig. 1 Dr Whale's 'off center' map showing approximate locations for various symptoms

The existence of such thing as the assemblage point was announced to the society by Castaneda [6] in a series of books that report of his apprenticeship to a

shaman in Mexico. It is important to note that he does not give any operational description of what actually the assemblage point is. Only the significance of manipulations of positions of the AP on human consciousness is reported. Dr Whale's books [1, 2] give an account for five times differences in voltage when measuring the electric potentials of the skin at the AP location and surrounding area. My opinion is that what they have measured actually is the diameter of the front and rear locations of the horizontal energy bundle passing through the AP (see fig. 2, taken from [2]).

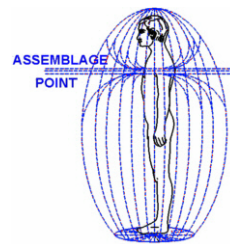


Fig. 2 Side view of the energy beam passing via the AP – this is the ideal healthy location.

**2. Assumptions and some mathematics.** I claim that properly located AP is positioned inside the chest, close to the root of the fourth human chakra in the usually used seven chakras system. This means that it is in front of fourth and fifth thoracic vertebrae under the region of trachea branching into two bronchi to the lung. In this way our breathing pumps new life into the AP with each inhale – exhale cycle.

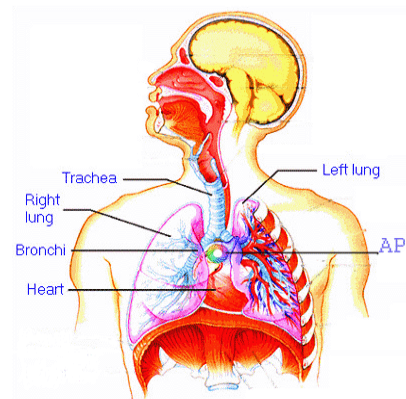


Fig. 3 Ideal Assemblage Point location

As a physicist I have questioned myself what type of form may be this vortex or core of the human energy field. Since there is energy bundle passing through it **the most probable structure seems to be a toroid form**, with energy currents that circle round inside it and an energy bundle of about one centimeter in diameter going via its hollow center. This toroid is positioned vertically few centimeters in front of the spinal column and thus there exists a horizontal beam of energy that goes via it. This is the ideal situation. Then the human energy field (HEF) is symmetric, has enough energy and as it has been proved by d-r Whale's and other therapists' practice humans are in good physical, emotional and psychological health.

How do human bodies emit electromagnetic waves? Billions of molecules in our bodies vibrate around their equilibrium positions thus creating electromagnetic waves. To that energy we have to add also the one that flows through our nerve system and acupuncture meridians. The brain activity also is a source of electromagnetic emission measured by EEG.

1. Atoms can be regarded as harmonic oscillators. Hence all material objects emit energy – information fields by the simple reason that they are built from vibrating particles.

2. In pure physical plane the cell is a small condenser. Inside there are negative charges and outside are the positive ones. Even though the cell takes inside positive ions it pumps out such in order to sustain the equilibrium of 100 mV. Since the charge in the cell membrane changes it emits in all directions similar to an antenna. Signals are added also from the chemical reactions within the cells that are over 10 millions per second.

3. The blood transports oxygen and nutrition substances to the cells but in fact it is transferring their electric ions, i.e. currents are flowing. Thus, the blood motion creates electromagnetic waves via the perpetual changes in its electric charge (voltage and amperage).

4. Yet more powerful are the electromagnetic waves of the charges flowing through the vast nerve set in our bodies. The cells have fields with strength from 0,001 to 1 mV/m, while for the nerve system it is 100 mV/m.

Here we shall start with a very simple and coarse grained model without going into details of human tissues. From the above said we see that there is energy flow passing horizontally via the AP, also in any human body there is at least one vertical energy channel via which energy goes up and down when breathing. These up and down energy fluxes can cause the electrons and ions in the area to move inside the toroidal vortex in circles. Then the following hypothesis can be made: as one simple model of the AP may be considered a current flowing along a circular loop. Since the breathing is almost regular and slow process the currents

flowing through the toroid of the AP vortex are quasi-stationary. As is well known in physics their magnetic field looks like the one shown on figure 4.

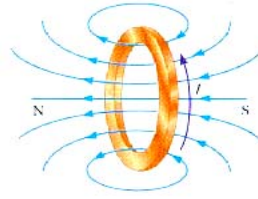


Fig. 4 Magnetic field lines of a current loop

It is easy to find that axial and radial components of the magnetic filed

created by a loop carrying current  $I$  are given as follows:

$$(1) \quad B_x = B_0 \frac{1}{\pi\sqrt{\xi}} \left[ E(k) \frac{1-\alpha^2-\beta^2}{\xi-4\alpha} + K(k) \right],$$

$$(2) \quad B_r = B_0 \frac{\gamma}{\pi\sqrt{\xi}} \left[ E(k) \frac{1+\alpha^2+\beta^2}{\xi-4\alpha} - K(k) \right],$$

where the following notations are used:

$$B_0 = \frac{\mu_0 I}{2a}, \quad k = \sqrt{\frac{4\alpha}{\xi}},$$

$$\alpha = \frac{r}{a}, \quad \beta = \frac{x}{a}, \quad \gamma = \frac{x}{r}, \quad \xi = [(1+\alpha)^2 + \beta^2]$$

and  $K(k)$  and  $E(k)$  are the complete elliptic integral functions of the first and second kind respectively. The fields (1) and (2) can be considered as a part of the human fields.

The capacitance of a toroid structure can be given approximately as

$$(3) \quad C = 2.8 \left( 1.2781 - \frac{D}{d} \right) \sqrt{\frac{\pi(D-d)}{2} \left( \frac{d}{2} \right)},$$

where the notations are as given on figure 5.

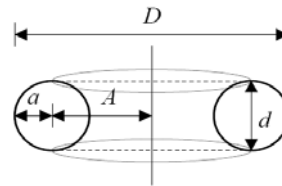


Fig.5 Toroid with major diameter  $D$ , minor diameter  $d$ , center radius  $A$  and tube radius  $a = d/2$

In our case, since the measurements, reported by Whale [1], give the width of the passing via the toroid hole energy bundle ( $w = A - a = D - d$ ) to be at about of one cm, we can take as an example  $D = 20$  mm and  $d = 5$  mm, thus its capacity is  $C = 0.869$  pF and hence it can be ignored.

Another also very important part of the whole picture of HEF will come from the vertical up and down energy fluxes. According to Brennen [7] this is the Hara line which runs in parallel to the spine. On that line chakras are rooted and around it ida and pingala channels are wound up. The importance of these three energy channels is that they unify energetically human body and field. D-r Whale suggests in his second book [2] that each chakra may be represented as suitable combinations of

resonating electrical circuits. In this way they are tuned to and exchange energy with the other humans and surroundings. This is too much complicated for our purposes, so we consider a very much simplified model and say that in gross the vertical energy flow is an opened (quantum) LC circuit, i.e. as an antenna – figure 6.



Fig. 6 Human as an open inductance – capacity circuit – antenna – for receiving and emitting energy from/to Earth and Cosmos

According to Whale the vibrations in human chakras vary from 5.2 Hz to 1440 Hz (p. 259, [2]). These frequencies are not high and hence we can consider the human ‘antenna’ as composed of separate solenoid (with inductance  $L$ ) and a dipole – the chakras under the feet and above the head may play the role of two (spherical) poles (plates of the ‘human condenser’). Let start with the magnetic field of the ‘**human solenoid**’ – we take it as positioned vertically across the spine, having  $N$  turns per unit length, radius  $a$  and let the flowing intermolecular current be  $I(\omega)$  which has the same value at every point of the solenoid. Then from electrodynamics it is known that the magnetic field solutions for inside and outside the solenoid are given by

$$(4) \quad B_z = \frac{i2\pi^2 a N I(\omega)}{c} \begin{cases} J_0(k\rho) H_1^{(1)}(ka), & \rho < a \\ J_1(ka) H_0^{(1)}(k\rho), & \rho > a \end{cases}$$

Here  $B_z$  is the magnetic field on the vertical,  $\rho$  is the radius from the center of the solenoid and  $k = \omega/c$ ,  $J_0, J_1$  are Bessel functions of the first kind and  $H_1^{(1)}, H_0^{(1)}$  are Hankel functions of the first kind. They are used to express outward- and inward-propagating wave solutions. Since both of the above given fields may be slowly variable they create an induced electric field according to the Maxwell’s law

$$(5) \quad E = (a^2/2r) dB/dt,$$

The magnetic field lines of a solenoid are well known and are shown on figure 7.

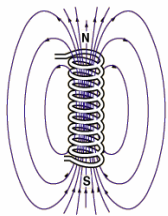


Fig. 7 Magnetic field produced by a solenoid with inductance

$$L = \frac{\mu\pi a^2 N^2}{l}$$

Also the next contribution to the human electromagnetic field comes from the ‘**human dipole**’ and it may be expressed approximately as the solution for time dependent dipole moment

$$(6) \quad \vec{p}(t) = \vec{p}_0 e^{-i\omega t}$$

where  $\omega$  could be the hearth beat frequency. They are based on the well-known electromagnetic fields

of an oscillating electric dipole [8] located at the origin of the coordinate system

$$(7) \quad \begin{aligned} \vec{E}(\vec{r}, t) &= \left( \begin{aligned} &-\frac{\omega^2}{c^2 r} ((\vec{p}_0 \times \hat{r}) \times \hat{r}) \\ &+ \left( -\frac{i\omega}{cr^2} + \frac{1}{r^3} \right) (3(\vec{p}_0 \cdot \hat{r}) - \vec{p}_0) \end{aligned} \right) e^{i(kr - \omega t)} \\ \vec{B}(\vec{r}, t) &= -\left( \frac{\omega^2}{c^2 r} + \frac{i\omega}{cr^2} \right) \vec{p}_0 \times \hat{r} e^{i(kr - \omega t)}, \end{aligned}$$

Here  $\hat{r} = \vec{r}/r$  is the unit vector from the centre of the dipole to the observer and  $c$  is the speed of light. As we are interested in the fields close to the human body, we will not consider the time retardation of the signals. These fields have a well known picture and it is given on figure 8.

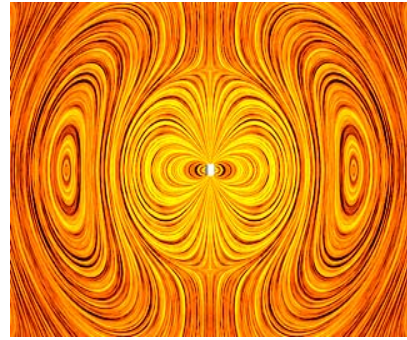


Fig. 8 Electric field around a time-varying electric dipole - the near zone, the intermediate zone and the far zone are shown.

Thus, in the first approximation, one can regard the human electro-magnetic energy field as a superposition of all the above given fields. Depending on their frequency coherency and compatibility there may be constructive (health) or destructive (illness) interference patterns. As d-r Whale’s long practice and research have proved these are governed by the AP location. Of course, it is not possible to claim that the HEF is formed only from electromagnetic waves. There are also quantum and torsion fields that have not been considered here. Despite, many investigations on electromagnetic modeling of human organs, e.g. brain and stomach, have been carried recently. For example Irimia [9] gives a very impressive model of these two organs as ellipsoid bioelectric current dipole.

**3. Conclusions.** During the last few decades a large amount of search has been done in measuring the human aura. There exist different types of technologies for these purposes: historically first is the Kirlian photography and one of its recent applications is the Resonant Field Imaging (RFI). ‘RFI<sup>TM</sup>’ technology began as an experiment to develop a scientific basis for the clinical use of

Aura imaging and to legitimize Aura imaging in general.' [10]. Another technology is the use of the Indicator of Geophysical Anomaly (IGA-1) to define intensities and borders of human's electromagnetic field [11].

Up till now such investigations concerning the human Assemblage point has been conducted only by Whale [12] by the use of invented by him Infrared Diagnostic Scanner. This device gives an excellent opportunity to establish the entry and exit locations of the AP. Also, d-r Whale has given the rules and ways of manual shifting the AP to its proper for the health location. He has invented the gem lamp therapy apparatus for curing the detrimental positions of the AP in people that can not be treated manually.

Still what is needed to understand that important for the human health energy vortex is to be done is to find a way to measure its frequencies, intensity of the fields governed by it, the range of its real sizes for different human species, whether it rotates clockwise and counterclockwise and so on. Actually, it is necessary to prove whether its location is in accordance with my hypotheses.

A hint about the shape of the AP came to me when I passed through the papers of S. Gamble [13], especially part three of his book. Then it occurred to my mind that the Assemblage Point has a toroidal structure! Actually, as it is stated in sacred geometry all forms of HEF should be toroidal. 'The Torus, or donut shape, is the first shape to emerge out of the genesis pattern and the primary shape in existence. This same mathematical form occurs everywhere in the natural world, from electromagnetic fields to galaxies, from atoms to apples. The Torus governs many aspects of life, including the human heart with its seven muscles that form a Torus.' [14]. Also, 'Matter as a product of energy and substance as a product of waves. Precipitate gather the waves in a funnel. The funnel causes rotary motion. Rotary motion causes a funnel. The motion creates a tight magnetic band similar to a torus around the apex of the funnel, the magnetic band itself is a spinning toroid which acts to contain what has been gathered.' [15]. The most important fact hidden in the cited statements is that once formed the toroid structure is a self-sustaining construction if there is no high outside disturbances. 'One of the energy patterns around the body is in the shape of a torus - or donut - with the energy flowing through the body and looping around to connect in at the feet and the head. It is as though we are in the middle position of the donut. The flow in through the head and feet is bidirectional. In other words it flows like the tides one way and then the next. In the matrix of this flow are the wave and particle relationships that structure and govern the nurturing "cosmic" energy from which we are crystallized.' [16]. Mine personal experience in study some energy control techniques proved

completely the above statement. So the assertion is that the HEF is to be of toroidal form of one main energy channel passing vertically and through it there are two flows – up (earth energy) and down (cosmic energy). Also there exist second energy channel that passes via the AP and it is horizontal again with the two types of energies flowing there. This energy field is also like toroid. The position of the AP and the entry/exit angles of that energy bundle are of crucial importance for the correct form of HEF and hence for the physical and mental health of every person. This has been proved by the all practitioners of human AP shifting technologies.

## References

1. Whale, J. (2006) *THE CATALYST OF POWER - The Assemblage Point Of Man*, second edition, DragonRising Publishing, UK <http://www.whalemedical.com/ap1.html>
2. Whale, J. (2006) *NAKED SPIRIT – The Supernatural Oddysay*, DragonRising Publishing, UK, [http://DragonRising.com/store/naked\\_spirit/?r=WHALE01](http://DragonRising.com/store/naked_spirit/?r=WHALE01), <http://www.nakedspirit.co.uk/ns8.html>
3. Whale, J. (1996) *CORE ENERGY Surgery for the Electromagnetic Body* <http://www.positivehealth.com/permit/Articles/Energy%20Medicine/whale15.htm>
4. Whale, J. (1996) *CORE ENERGY Locating the Assemblage Point* <http://www.positivehealth.com/permit/Articles/Energy%20Medicine/whale16.htm>
5. Whale, J. (1996) *CORE ENERGY Shifting the Assemblage Point* <http://www.positivehealth.com/permit/Articles/Energy%20Medicine/whale17.htm>
6. Castaneda C., *The Fire from Within* (1984) ISBN 0-671-73250-1
7. Brennen B. (2000) An Esalen Invitational Conference, July 2 - 7 <http://www.esalenctr.org/display/confpage.cfm?confid=8&pageid=73&pgtype=1>
8. Jackson J.D., *Classical Electrodynamics*, 3rd ed. (Wiley, New York, 1999), sec. 9.1
9. Irimia A., *J. Phys.A: Math.Gen.* **38** (2005) 8123
10. <http://www.item-bioenergy.com/rfi/science.html>
11. [http://www.ecodowsing.com/Products/IGA-1%20Manual%20EN.htm#\\_Toc99035723](http://www.ecodowsing.com/Products/IGA-1%20Manual%20EN.htm#_Toc99035723)
12. Whale J., <http://www.nakedspirit.co.uk/>
13. Gamble S., *SHOPPING FOR SPIRIT* - <http://www.equilibrauk.com/shop3.shtml>
14. [http://sacred-geometry.com/tshirts/Torus\\_gateway.htm](http://sacred-geometry.com/tshirts/Torus_gateway.htm)
15. <http://www.west.net/~simon/VORTEX-PATTERNS.html>
16. <http://harmonicresolution.com/Toroidal%20Space.htm>

Up to here the work has been published in the **Proceedings of MEASURING ENERGY FIELDS, International Scientific Conference, Kamnik, Tunjice, 13-14 Oct. 2007, Ed. By Igor Kononenko, pp 48 -51.**

The article has been finished and sent to the Conference Chair on the 3<sup>rd</sup> of Aug. 2007 and accepted for participation on 7<sup>th</sup> of Aug. 2007

## Appendix

### MORE ON TOROIDAL STRUCTURE OF HUMAN ENERGY FIELD (HEF)

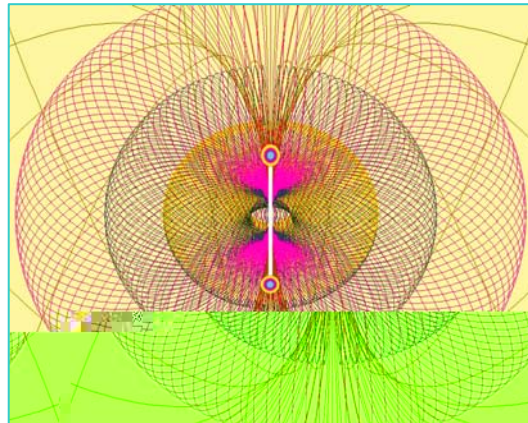
The above mentioned Brennan's Hara Line needs some more specification. Following Dean Ramsden [17] one can state that the Assemblage Line runs through the vertical center of each individual, and channels the *Vital Energy Body*, or the primal energetic-informational consciousness in each human being. In the recently developed teachings and practice by Verishtagin [18] and his School for Further Energy – Information Development of the human beings this energy Line is the first stage to be mastered. Here I shall call it the Central Assemblage Energy Channel (CAEC) in order to underline its importance for Energy – Information supply with Vital Force of any living being. There exist two types of energy flowing through it: one runs up from the feet to the head and the second runs down from the head to the feet. In fact, these energy streams run from minus infinity to plus infinity and vice versa. In our contemporary human stage we can feel them inside our bodies between our first and seventh chakras. This happens after suitable training process during which we get in touch with our sub-subconscious mind.

As Thoth [19] states in his 13<sup>th</sup> Emerald Tablet man is dual, “balanced in polarity while formed in its form” and “all that exist has form and is living because of the Spirit of Life in its poles”. As the two primary poles each human being has can be considered the following two chakras: Brahmaloya and Anti-Brahmaloya. These chakras are discussed by the Russians Vselenskii and Vselenskaia [20] in some other aspects. They assert that Brahmaloya is connected with the Absolute (God, Spirit, Unified Field) and Anti-Brahmaloya is connected with the World of Metals. These are the highest and the lowest worlds a human being may get in touch. By my visions Brahmaloya is positioned on the CAEC 0.2 m to 1 m above the head and Anti-Brahmaloya is situated on the opposite side of CAEC 0.5 m to 1.5 m below the feet (see figure A-1). The process of energy-consciousness flow through the CAEC between the two chakras specified above goes on a level that is under our subconscious mind, thus we even do not feel it. A special training is needed to become aware of the existence of the CAEC. Usually people feel the prevalence of earth energy (up flow) as inpouring of emotions and warmth, while the domination of cosmic energy (down flow) is ‘felt’ as clearing the mind, becoming calm and rational.

The main point here is that the **missing concept** in most of the theories dealing with HEF or bio-field is by my opinion just that **primary energy-information ‘nourishment’** originating from the unified field by means of the CAEC of any human

being. Of course we do need food to support the existence of our flesh.

Now, the time has come to speak aloud for that important connection of the human being with the surrounding World (Unified Field). The existing chakras (created during our socialization) only serve to convert/transmute the energy and consciousness from the Unified Field into a suitable form to be used from any person in the human energy band [21]. That is the main role of the chakras and one very important (but not so good) their role is to create horizontal interconnections among people [22]. Thus personalities become interdependent by the surrounding community.



**Fig. A-1 HEF as a system of toroidal layers.** The vertical white strip depicts the Central Assemblage Energy Channel between the two chakras Anti-Brahmaloya and Brahmaloya. The latter channels Cosmic energy, information and consciousness, while the first one supplies us with Earth energy, information and emotions. The energy patterns around the human body are in the shape of toroids – with the energy flowing through the body and looping around to connect in at the feet and the head. The main flow of energy is through the CAEC and is bidirectional: the “earth” energy enters the Anti- Brahmaloya chakra and goes up while the “cosmic” energy enters via the Brahmaloya and flows down – both curling to form toroids.

#### References to the Appendix (continued)

17. Ramsden D., The Assemblage Line and "Agendas", <http://www.deanramsden.com/AssemblageLine1.htm>

18. Verishtagin D., *Liberation – First Stage*, (in Russian)

19. Thoth, The Keys of Life and Death,

<http://www.crystalinks.com/emerald13bw.html>

20. Vselenskii E., Vselenskaia L., Flower of Universe Spiritual Love and Wisdom, Cosmic Genetics, 2004 (in Russian)

21. Mares T., Return of the Warriors: The Toltec Teachings, Vol. 1,

[http://www.renascentlegacy.com/books\\_vol1.html](http://www.renascentlegacy.com/books_vol1.html)

22. Ramsden D., Relational Energy Healing & Chakra Cords <http://www.deanramsden.com/ChakraCords1.htm>

[Back](#)