

MEASURING ENERGY FIELDS,

International Scientific Conference, Kamnik, Slovenia, 13-14 Oct. 2007

TOROIDAL STRUCTURE OF THE ASSEMBLAGE POINT

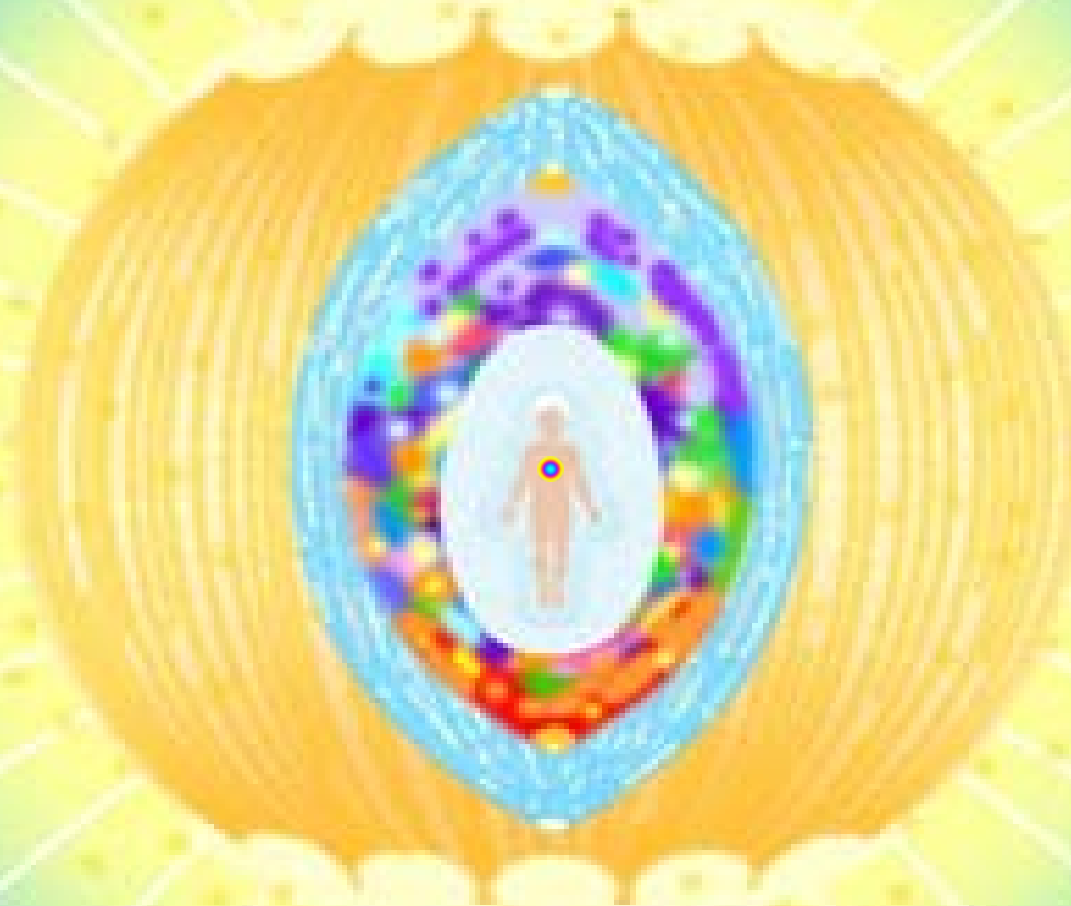
**and a naive model of
Human Energy Field**

© **Elena Evtimova, PhD, Ass. Prof., University of Sofia**

http://www.geocities.com/human_energy_fields

Human Energy Field: in its healthy state + Assemblage Point

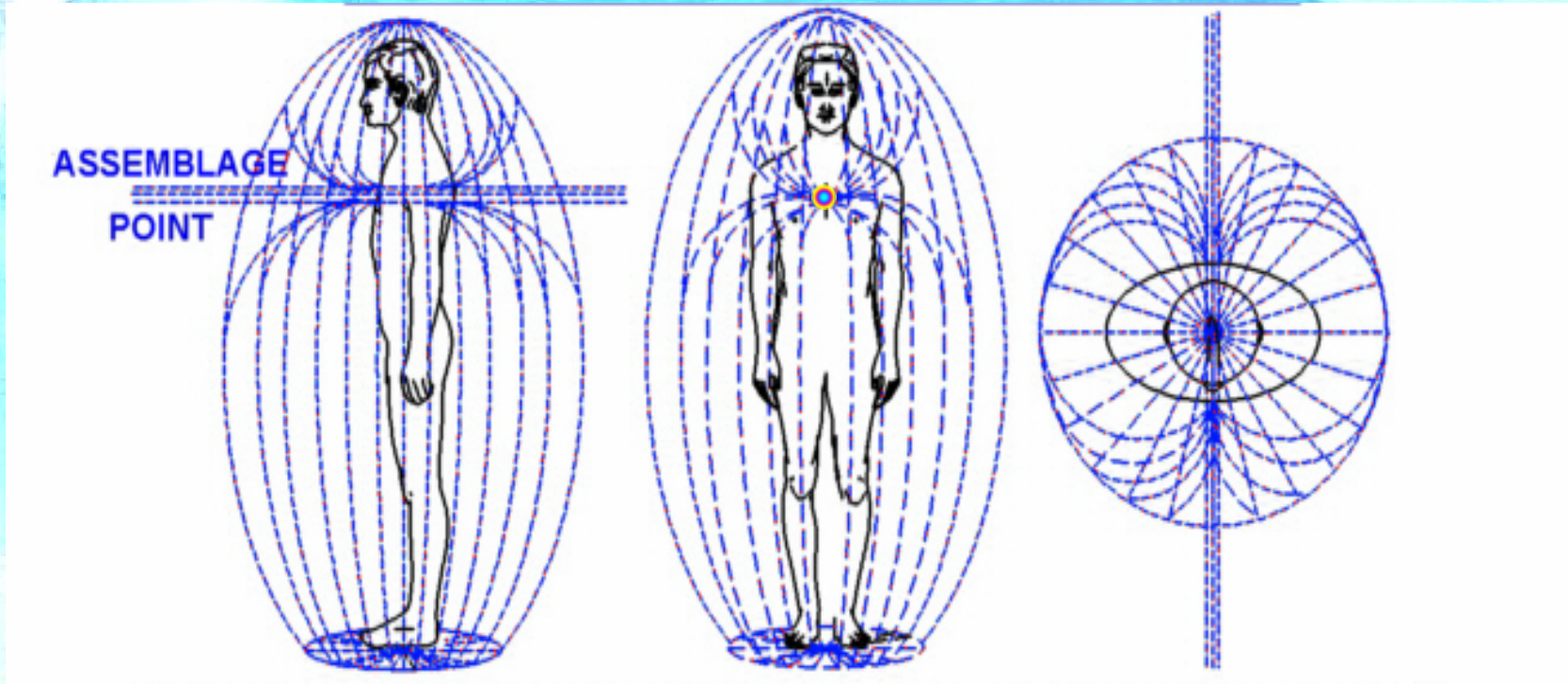
© http://www.geocities.com/human_energy_fields



Physical body surrounded by (S. Lumier, <http://www.energyreality.com/pgs/comb.htm>)

1. Etheric (Vital) body, 2. Astral body, 3. Mental body and 4. Causal body
connected with the energy threads of the Universe – Assemblage Point is in
the centre of all these fields according to Dr J. Whale, www.whalemedical.com

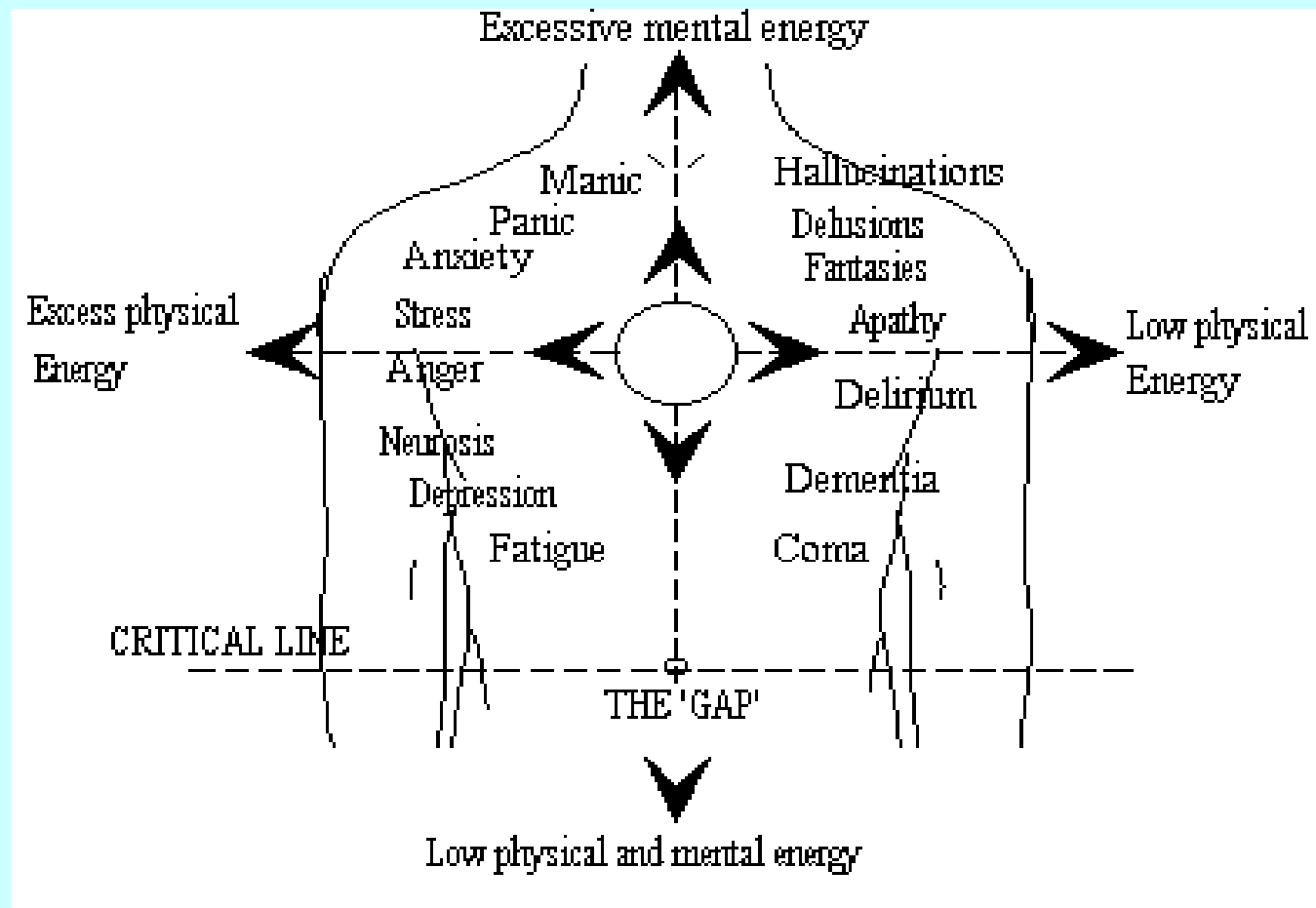
Assemblage Point is the vortex or epicenter of human energy fields and via it the perception threads are passing



Properly located and aligned Assemblage point – Human Energy Field is symmetric, energy circulates properly and we are in optimum mental and physical health

(after J. Whale - <http://whalemedical.com/cd1.html>)

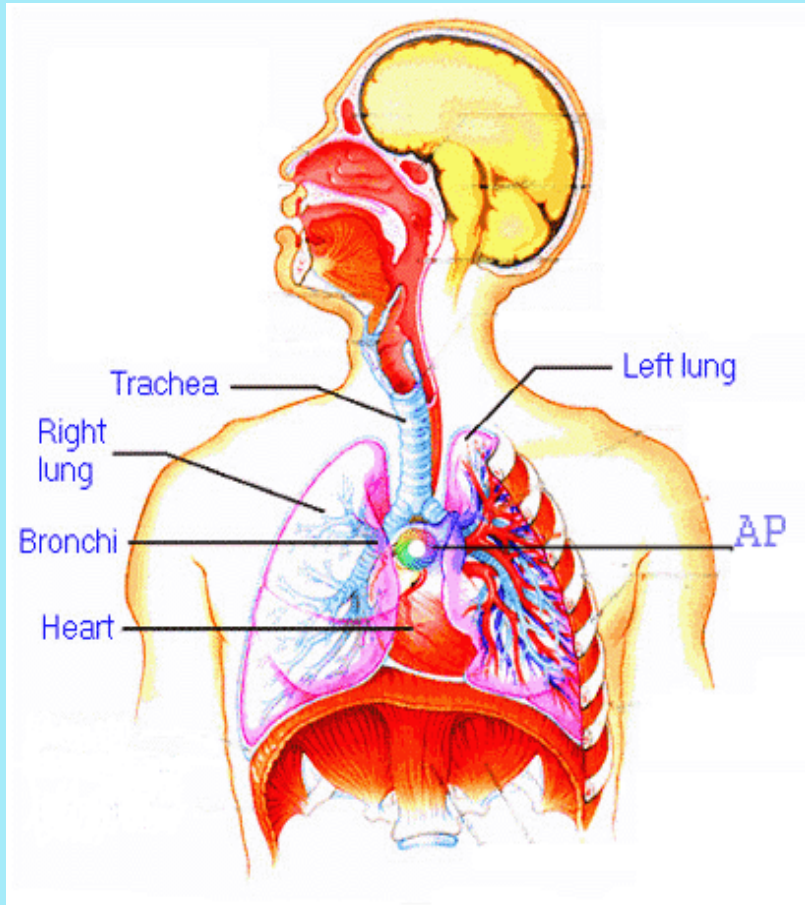
Dr Whale's 'off center' map showing approximate locations for various symptoms



More details for the influence of the AP location on health:
http://www.whalemedical.com/cd1_03.html or
<http://www.nakedspirit.co.uk/ns8.html>

Assemblage Point Location

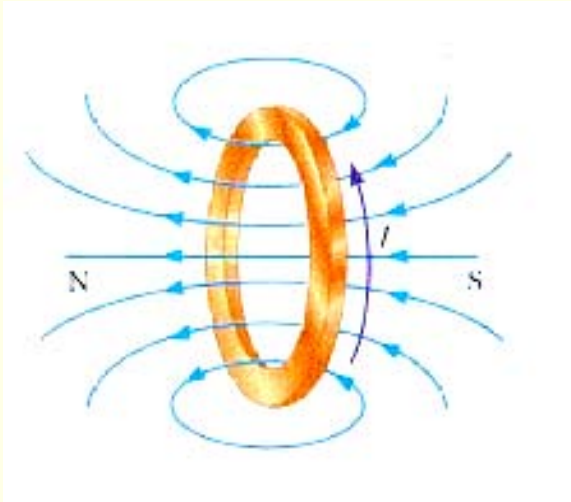
Proposed
ideal healthy situation:



The Assemblage Point is a continually rotating torus and is positioned inside the chest, close to the root of the fourth human chakra, in front of fourth or fifth thoracic vertebrae under the region of trachea branching into two bronchi to the lung. Thus each our breathing pumps new life in the AP rotation process.

Assumptions and some mathematics

Axial and radial magnetic field components of the AP considered as a current loop



$$B_x = B_0 \frac{1}{\pi\sqrt{\xi}} \left[E(k) \frac{1-\alpha^2-\beta^2}{\xi-4\alpha} + K(k) \right],$$

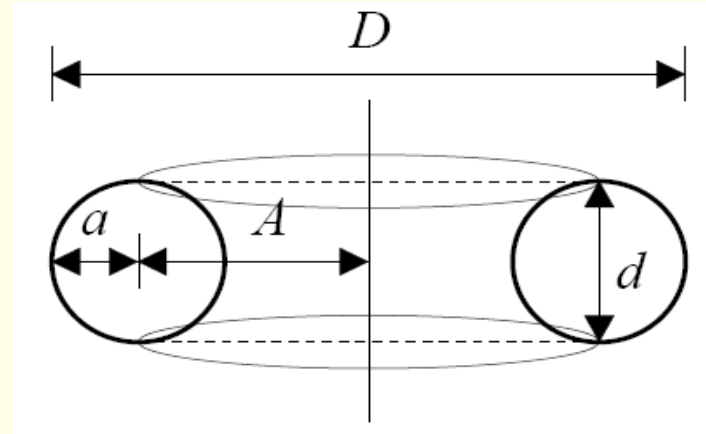
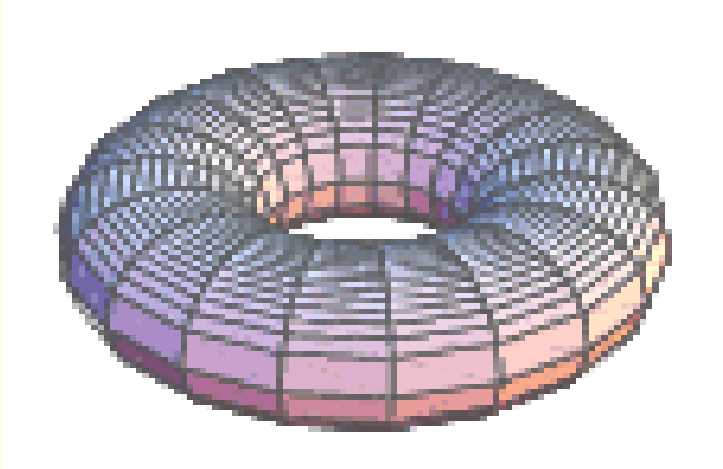
$$B_r = B_0 \frac{\gamma}{\pi\sqrt{\xi}} \left[E(k) \frac{1+\alpha^2+\beta^2}{\xi-4\alpha} - K(k) \right]$$

Notations:

$$B_0 = \frac{\mu_0 I}{2a}, k = \sqrt{\frac{4\alpha}{\xi}}$$

$K(k)$ and $E(k)$ - complete elliptic integral functions of the first and second kind, I is the magnitude of the current, a - the radius of the loop, x - horizontal axis and r - distance from the loop center

Ring torus – full view and cross sectional representation



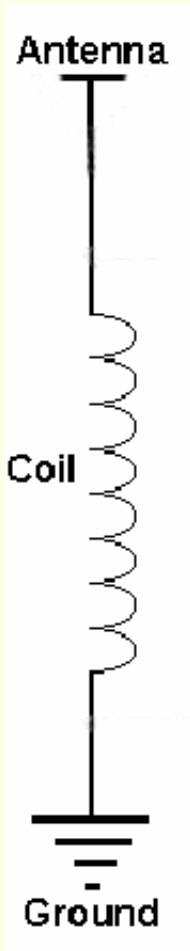
Toroid (torus) with major diameter D , minor diameter d , center radius A and tube radius $a = d/2$. Approximate formula for capacitance:

$$C = 2.8 \left(1.2781 - \frac{D}{d} \right) \sqrt{\frac{\pi(D-d)}{2} \left(\frac{d}{2} \right)}$$

$C = 0.869 \text{ pF}$ if $D = 20 \text{ mm}$ and $d = 5 \text{ mm}$

© http://www.geocities.com/human_energy_fields

Human: open inductance – capacity circuit – antenna, receiving and emitting energy



Coil (solenoid) inductance

$$L = \frac{\mu\pi a^2 N^2}{l}$$

N – number of coil turns, may be taken as turns of ida and pingala channels, l – coil length

Coil magnetic field on vertical (z direction)

$$B_z = \frac{i2\pi^2 aNI(\omega)}{c} \begin{cases} J_0(k\rho)H_1^{(1)}(ka), & \rho < a \\ J_1(ka)H_0^{(1)}(k\rho), & \rho > a \end{cases}$$

J and H are Bessel and Hankel functions of the first kind, a – radius of the coil, $k = \omega / c$ and

$\rho < a$ - field inside, $\rho > a$ - field outside the coil

Human electromagnetic field – as originating from a ‘human dipole’

Time dependent dipole moment

$$\vec{p}(t) = \vec{p}_0 e^{-i\omega t}$$

\vec{p}_0 - static dipole moment between feet and head
Solution for oscillating electric dipole

Electric
Field:

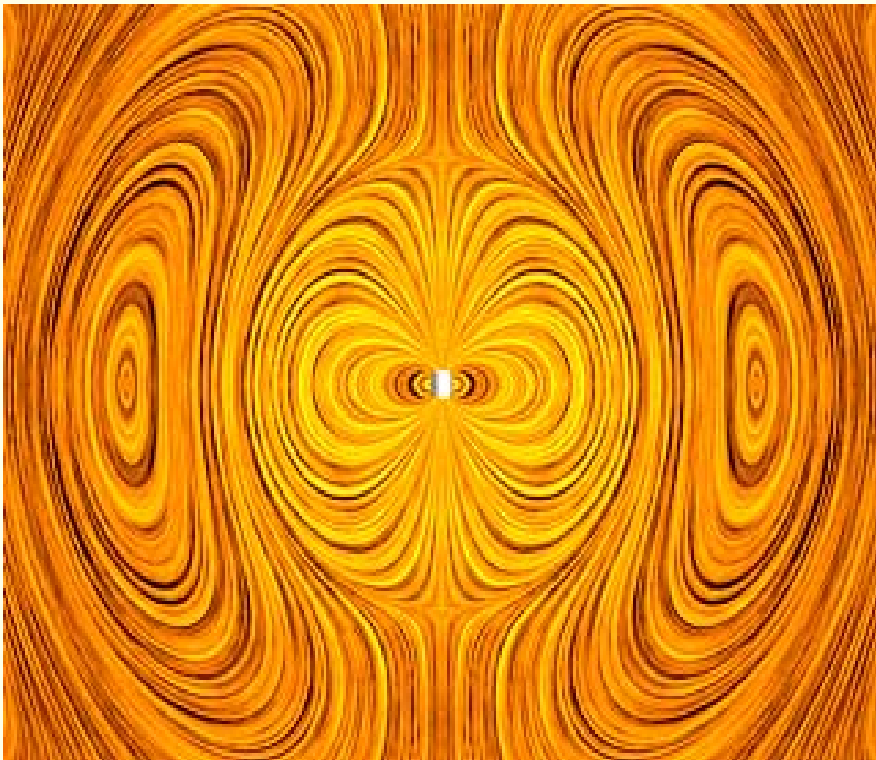
$$\vec{E}(\vec{r}, t) = \left(\begin{array}{l} -\frac{\omega^2}{c^2 r} ((\vec{p}_0 \times \hat{r}) \times \hat{r}) \\ + \left(-\frac{i\omega}{cr^2} + \frac{1}{r^3} \right) (3(\vec{p}_0 \cdot \hat{r}) - \vec{p}_0) \end{array} \right) e^{i(kr - \omega t)}$$

Magnetic
Field:

$$\vec{B}(\vec{r}, t) = -\left(\frac{\omega^2}{c^2 r} + \frac{i\omega}{cr^2} \right) \vec{p}_0 \times \hat{r} e^{i(kr - \omega t)}$$

- ♦ ω - frequency of oscillations of the human field

The total human electromagnetic field may be considered as a coherent composition of all these fields from the torus, solenoid and dipole

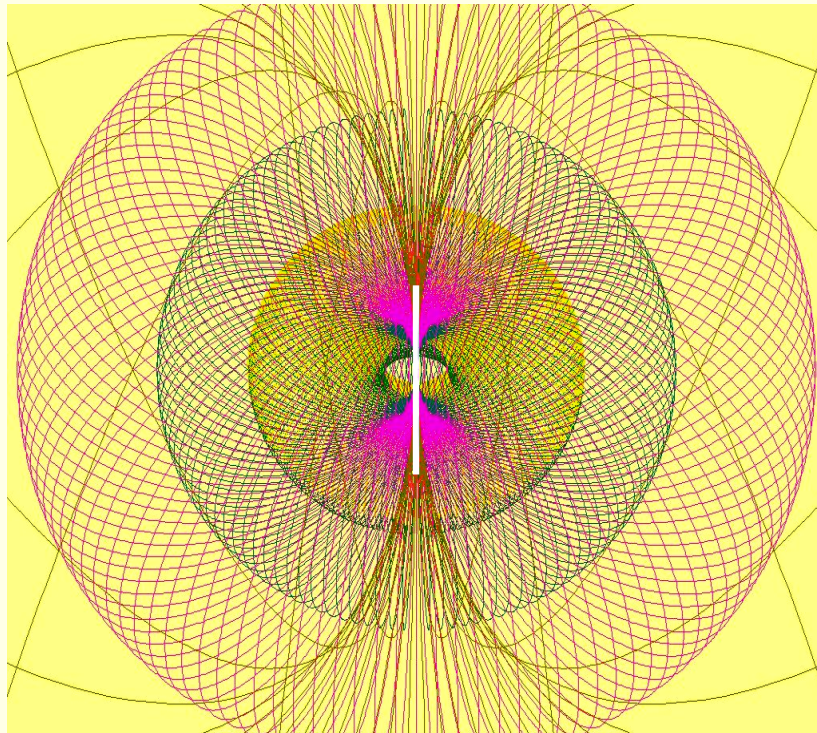


The electric field around a time varying electric dipole – the near zone, the intermediate zone and the far zone.

All the physiological processes mainly on the physical level create currents that emit around us (bio-photons) and the breathing is one of processes for accepting and distributing energy via the AP – torus and Assemblage Energy Channel.

Toroidal structure of HEF

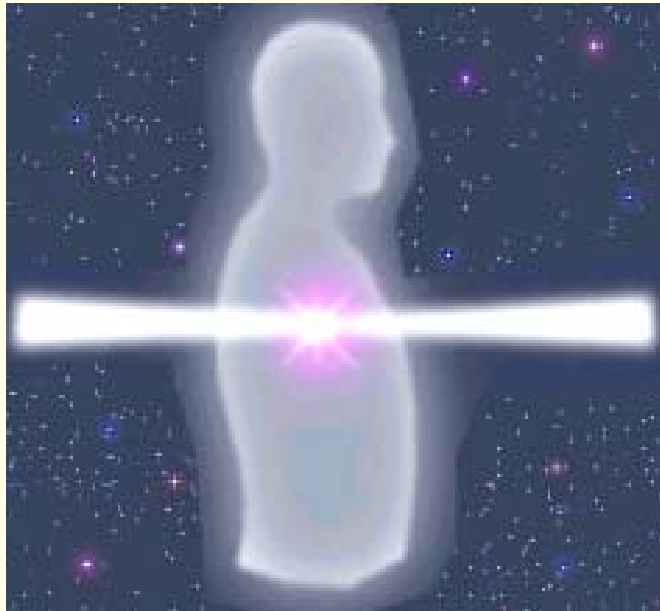
HEF is a system of toroidal layers that are assembled around the Central Assemblage Energy Channel (vertical white line) and the Assemblage Point (on that line in the centre of the chest)



The energy patterns around the human body are in the shape of toroids – with the energy flowing through the body and looping around to connect in at the feet and the head. The main flow of energy is through the Central Assemblage Energy Channel and is bidirectional: the “earth” energy enters the feet chakra and goes up to the head while the “cosmic” energy enters via the head and flows down to the feet – both curling to form toroids.

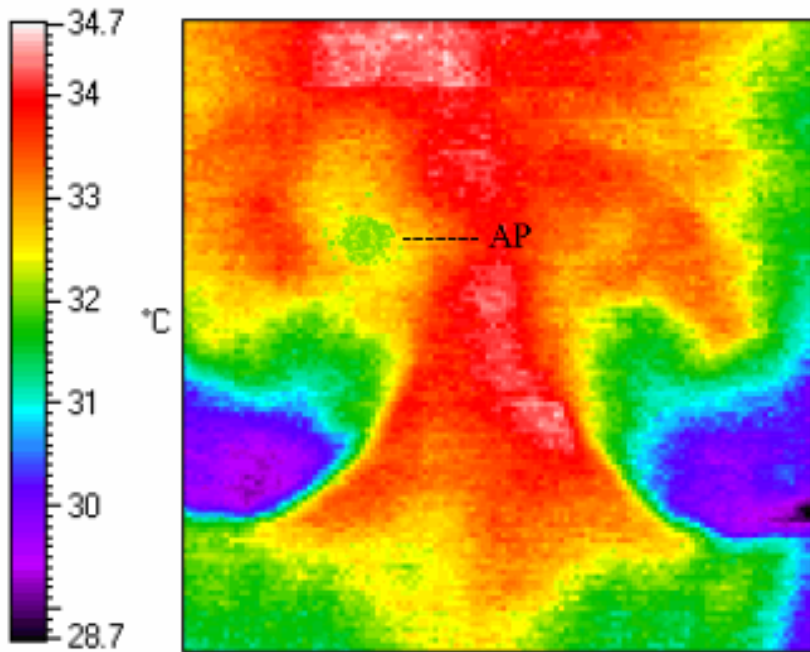
PERCEPTION ENERGY BEAM via the AP – side view from

<http://www.clearyourpath.ca/>



- Actually this is our second by importance energy channel, it is horizontal with „earth“ and „cosmic“ energies flowing through the hole of the toroid. The position of the AP and the entry/exit angles of that energy bundle are very important for the correct form of HEF and hence for the physical and mental health of every person. The front and back locations of this energy bundle are called the front AP and the rear AP. They can be sensed, visualized or measured via micro-wave devices working into the infrared spectrum.

Radiometric Image of a female Assemblage Point

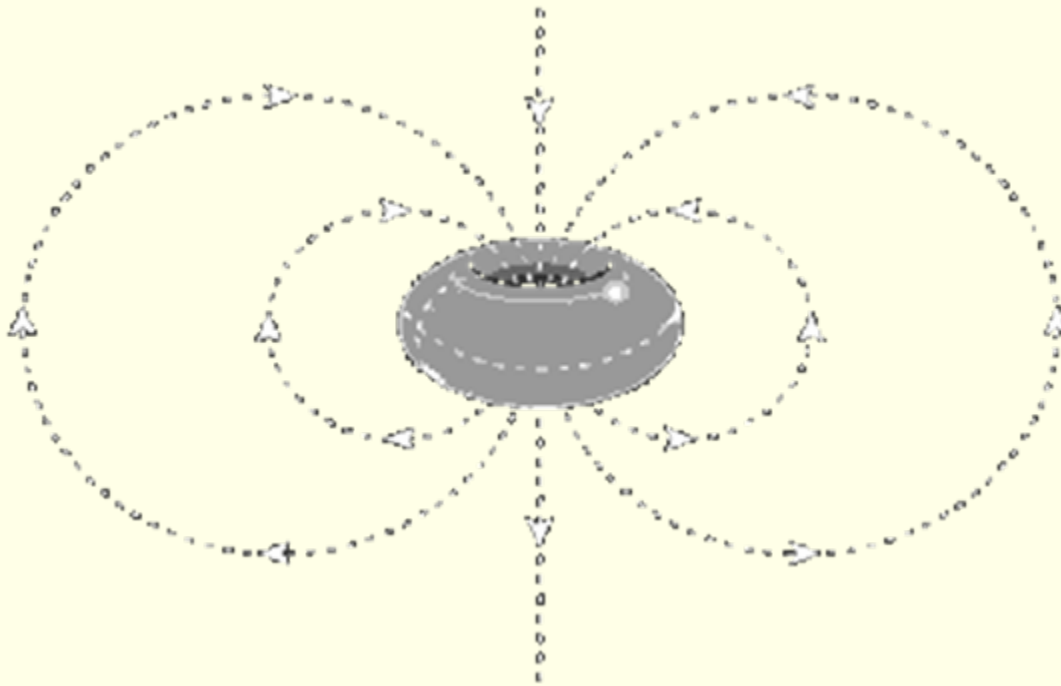


- The AP is marked in green on the image and is located just above the right breast – typical position of the AP in the contemporary humans, connected with the domination of the left brain hemisphere, i.e. logical thinking.
- Picture is taken from <http://www.whalemedical.com/cd1.html>

CONCLUSIONS

- If the Assemblage Point is positioned at the centre of the chest the vibrations of human energy field are coherent and compatible so there is constructive interference in the human vibrations and fields and hence health. If the Assemblage Point is shifted from this centre there appear destructive interference patterns and hence illness.
- The position of the AP dictates the energy flow through the Assemblage Energy Channel and also through the Ida and Pingala channels.
- Once formed any toroid structure is a self-sustaining construction if there is no high outside disturbances.

Next is a Java application representing the field creation of a toroidal current as suggested to be the Assemblage Point.



There may be etheric, astral and mental currents also exist. All depends on the rate of vibrations passing via the Assemblage Point.



**THANK YOU
FOR YOUR
ATTENTION!**

Elena Evtimova, 13.10.2007, Kamnik, Tunjice, Slovenia

© Elena Evtimova http://www.geocities.com/human_energy_fields