

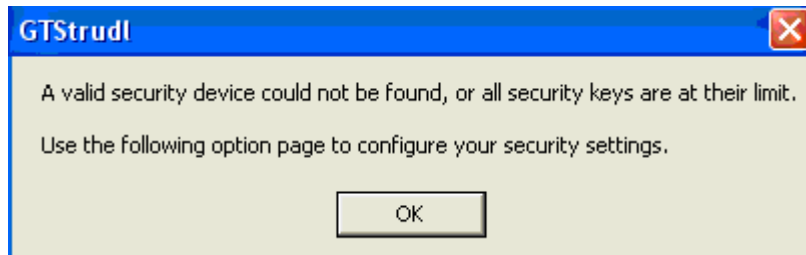
How to fix the problem with GTSTRUDL

Steps

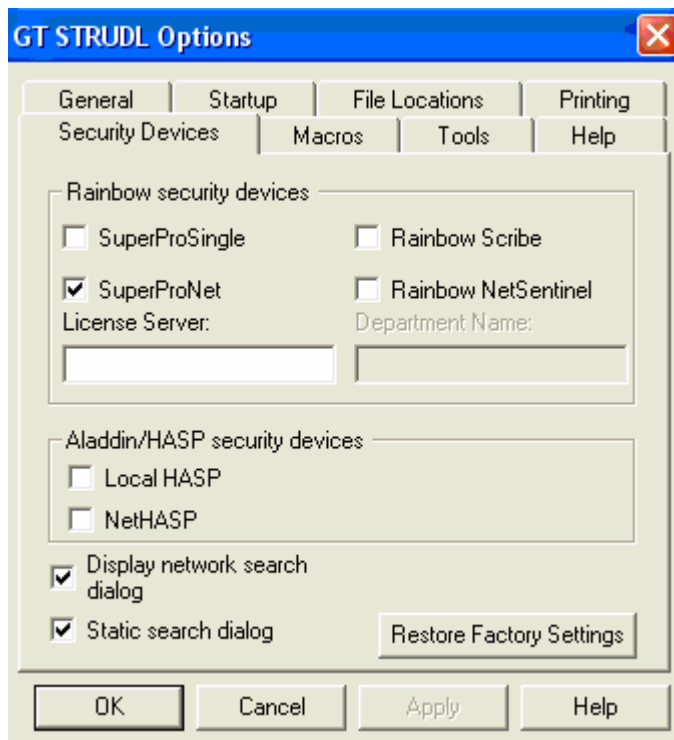
1) When you first run GTSTRUDL, you may see the below error. Click the OK button.



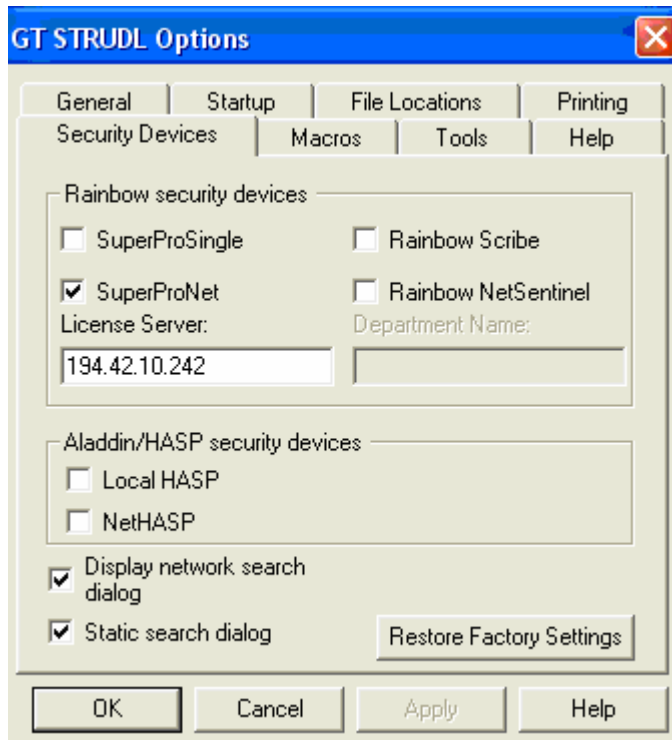
2) Click again the OK button.



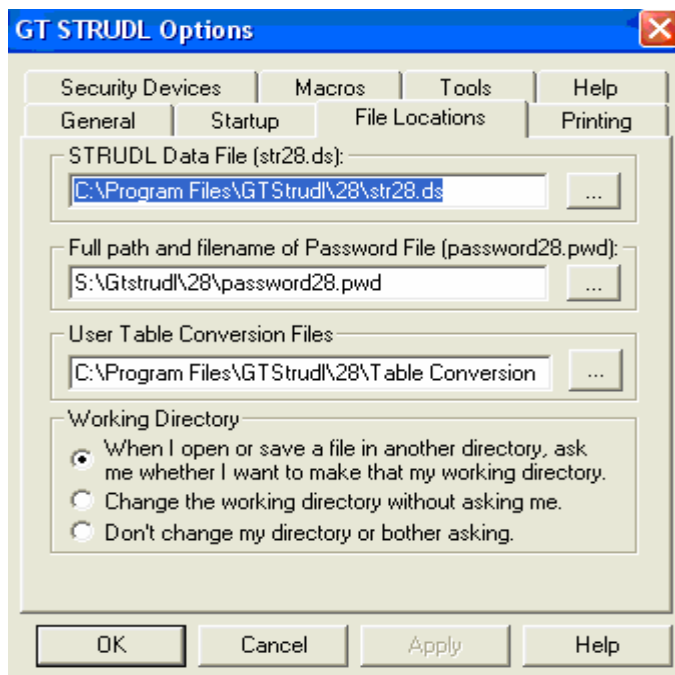
3) Then you will see the below windows (GTSTRUDL Options).



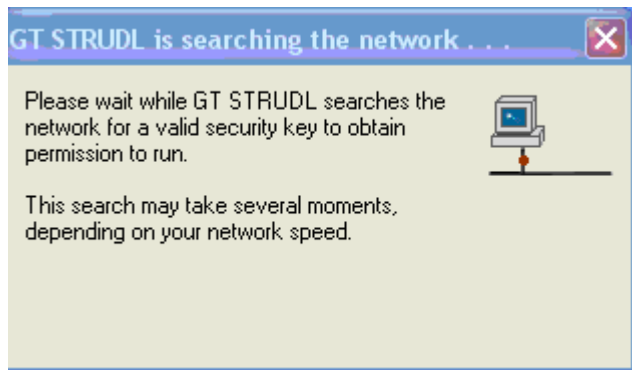
4) On the Security Devices tab, write in the License Server field the numbers 194.42.10.242 and ✓ on the SuperProNet as it show below.



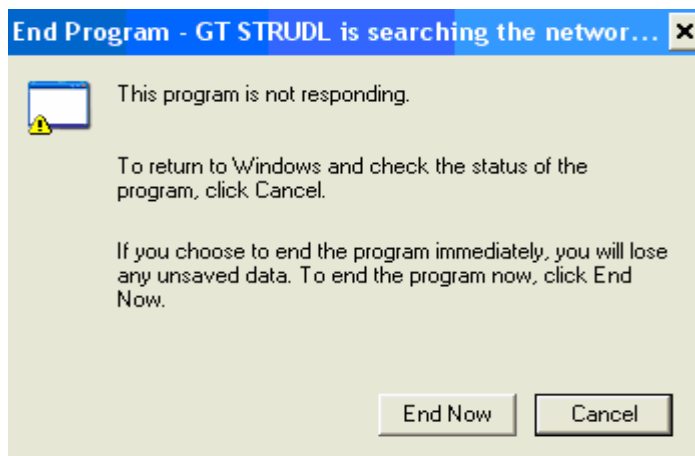
5) On the same windows, go to the File Location tab as it show below and write the S:\Gtstrudl\28\password28.pwd. You can also use the browse button and find the file at the S drive in the My Computers and go to folder Gtsrrudl\28\password28.pwd and click the OK button.



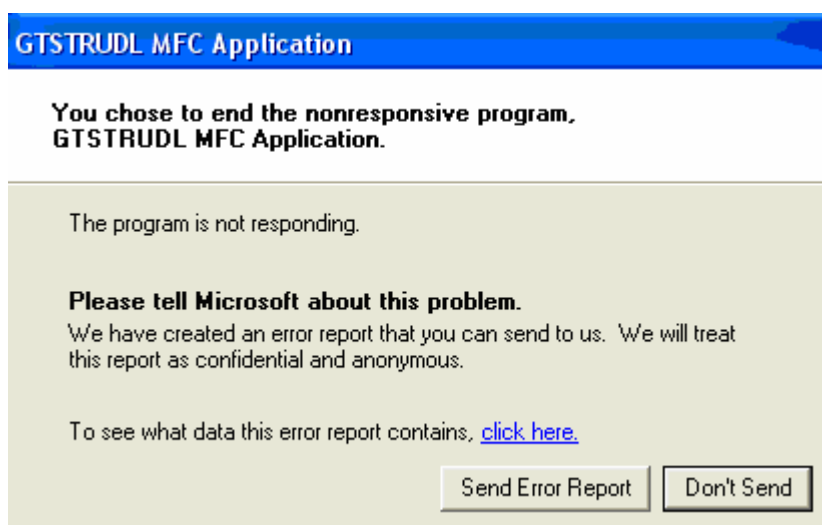
6) On this Windows click the X button.



7) Press the End Now button.



8) Click the Don't send Button.



9) Run again the GTSTRUDL and it will be working.

