

# Create Your Own Rheemote.Net Account

It's as easy as 123!

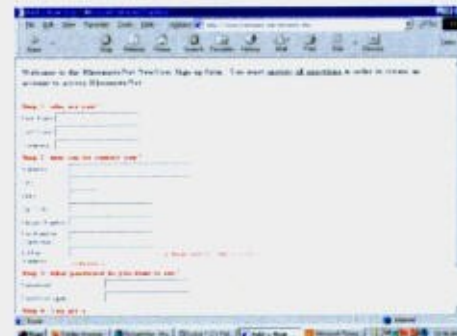
## Step 1

- ~ Go to WWW.Rheemote.Net
- ~ Select  
“Check Out The Requirements”



## Step 2

- ~ Fill Out The Form



## Step 3

- ~ Logon and Check Out  
Rheemote.Net & Related Links

When logging on remember to type your first & last name as one word (no space).



## Links to:

- ~ **PTS** – Rheem Product Technical Support.
- ~ **Historical Library** – Info on older Rheem products.
- ~ **Top Technician Training** – Info on Rheem training.
- ~ **WrightSoft** – Performance Info on Rheem products.
- ~ **Protection Plus** – Extended warranty information.
- ~ **Gateway** – Discounts on Gateway products.

