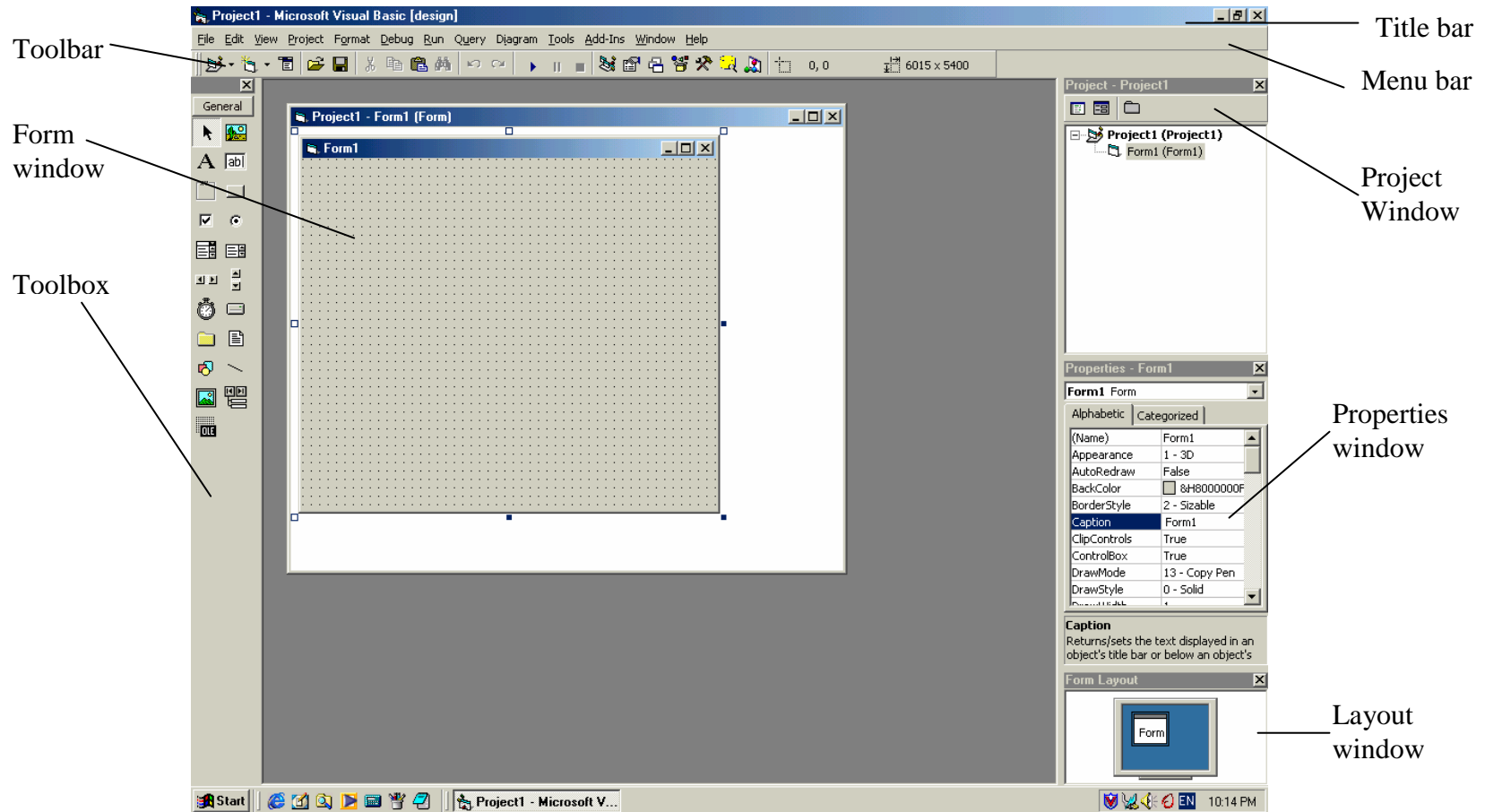
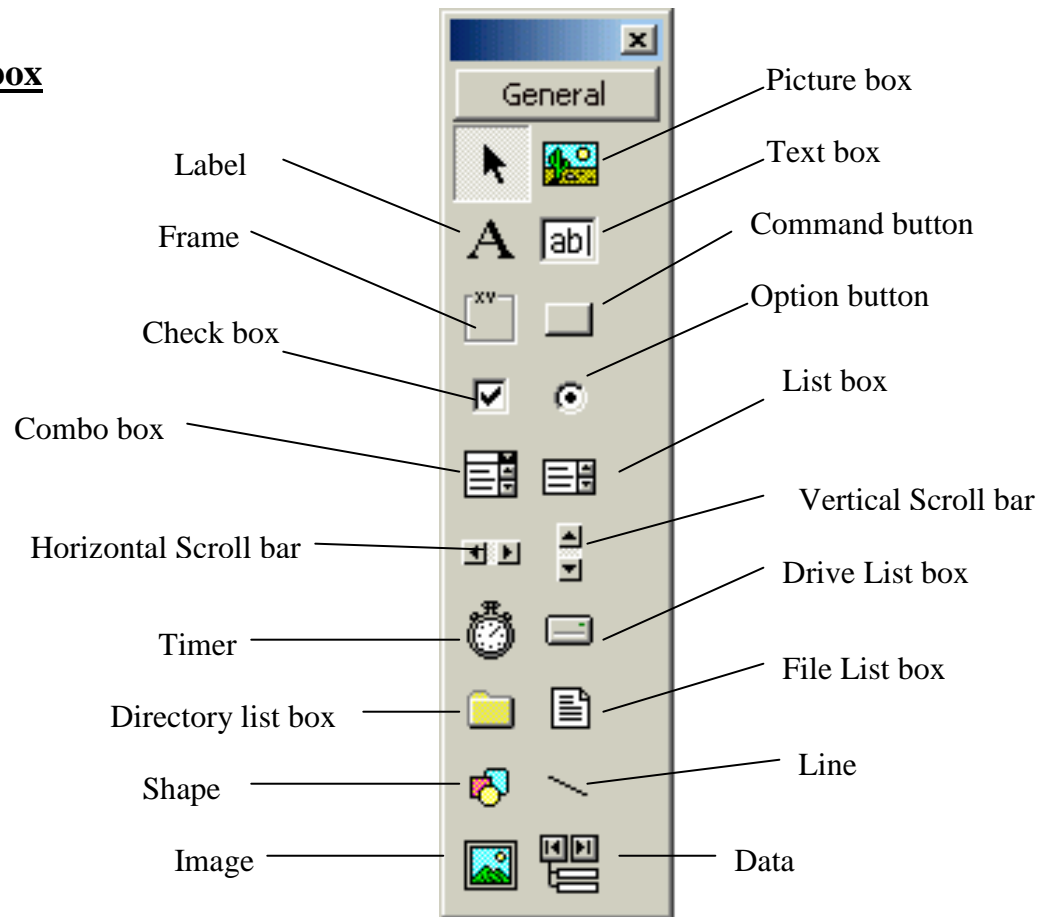


VisualBASIC Environment



Tool box



Properties of Form 1

Property	Value
Appearance	1 - 3D
BackColor	&H8000000F&
BorderStyle	2 - Sizable
Caption	Form1
FillColor	&H00000000&
FillStyle	1 - Transparent
FontTransparent	True
ForeColor	&H80000012&
Palette	(None)
Picture	(None)
Behavior	
AutoRedraw	False
ClipControls	True
DrawMode	13 - Copy Pen
DrawStyle	0 - Solid
DrawWidth	1
Enabled	True
HasDC	True
OLEDropMode	0 - None
PaletteMode	0 - Halftone
RightToLeft	False
Visible	True

Caption
Returns/sets the text displayed in an object's title bar or below an object's icon.

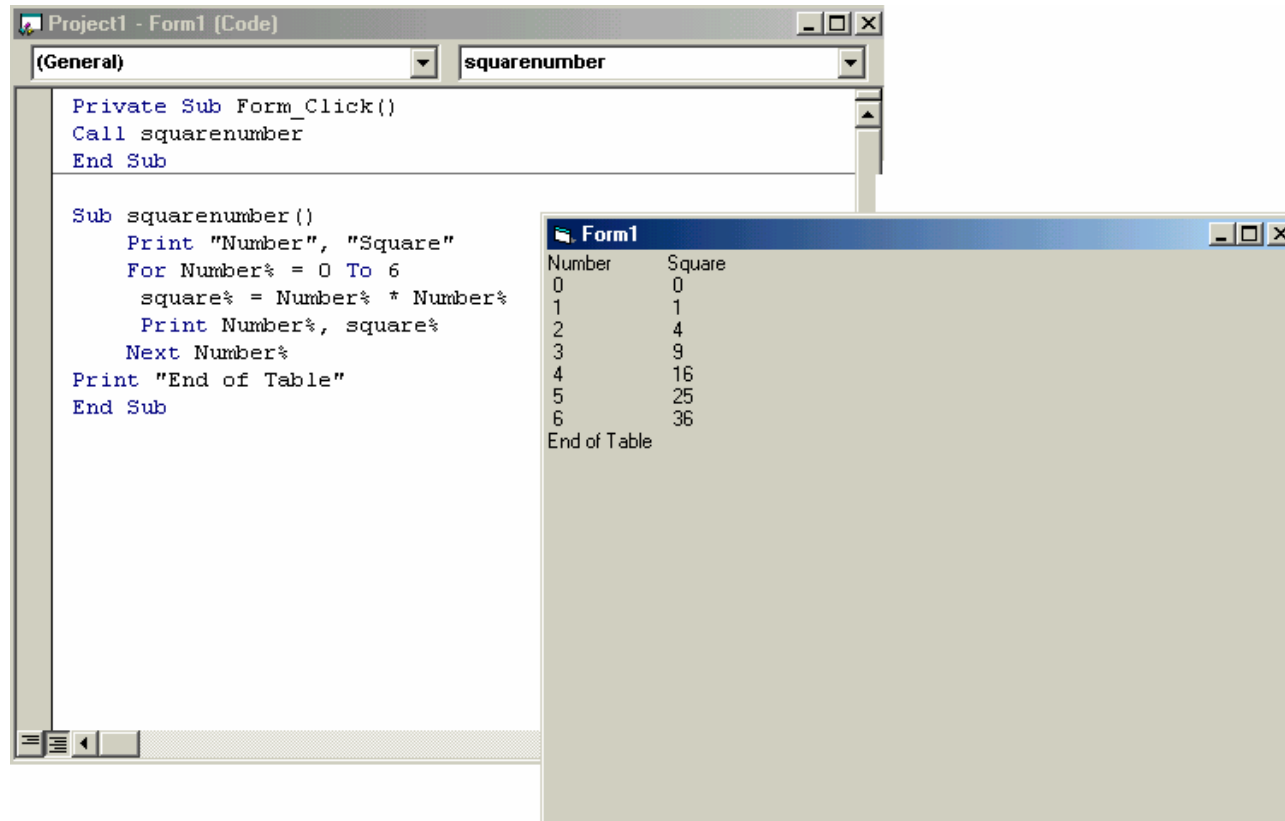
The image shows a screenshot of the Visual Basic IDE. On the left, a window titled "Project1 - Form1 (Form)" displays a form with a grid background. A text box control, labeled "Text1", is positioned on the grid. Below the form window, the text "Properties of Text 1" is centered. On the right, the "Properties - Text1" window is open, showing the properties of the selected text box. The window has two tabs: "Alphabetic" and "Categorized". The "Categorized" tab is active, and the properties are grouped into sections: "Data", "DDE", "Font", and "Misc". The "Text" property is highlighted in blue, and its value is "Text1". Below the properties list, a description for the "Text" property is provided: "Returns/sets the text contained in the control."

Property	Value
Visible	True
Data	
DataField	
DataFormat	
DataMember	
DataSource	
DDE	
LinkItem	
LinkMode	0 - None
LinkTimeout	50
LinkTopic	
Font	
Font	MS Sans Serif
Misc	
(Name)	Text1
Alignment	0 - Left Justify
HelpContextID	0
Index	
MouseIcon	(None)
MousePointer	0 - Default
PasswordChar	
Tag	
Text	Text1

Text
Returns/sets the text contained in the control.

Programming in BASIC

FOR – NEXT Loop



```
Project1 - Form1 [Code]
(General) squarenumber

Private Sub Form_Click()
    Call squarenumber
End Sub

Sub squarenumber()
    Print "Number", "Square"
    For Number% = 0 To 6
        square% = Number% * Number%
        Print Number%, square%
    Next Number%
    Print "End of Table"
End Sub
```

Number	Square
0	0
1	1
2	4
3	9
4	16
5	25
6	36

End of Table

IF – THEN - ELSE

