

THE UNIVERSITY OF TEXAS OF THE PERMIAN BASIN

Contents prepared by Myra Salcedo of the UTPB Public Information Office

Sunday, November 20, 2005

Mesa Building in Miniature



Second-grader Aikaterini "Kaiti" Stylianides (above) made a cardboard replica of UTPB's Mesa building as part of a class project to reproduce Odessa buildings. She is joined by her brother, Antonios "Tony" (in left photo). Kaiti is a student in Nan Bowen's class at LBJ Elementary School in Odessa. All the second-grade students at the school reproduced business buildings in Odessa. "It became a family project," said Kaiti's mother, Karen Stylianides. Kaiti even fashioned tiny clay prairie dogs (viewed best in right bottom corner of photo on the left). The children's father is Dr. Georgios A. Stylianides, UTPB Director of Biomechanics.

In the gallery ...

Freshman-Sophomore Art Exhibit 2005

UTPB's "2005 Freshman/Sophomore Show" opened Nov. 18 in the Nancy Fyfe Cardozier Gallery of the Visual Arts Studios. The exhibit consists of art produced in the 1000- and 2000-level studio courses this year.

"This is also our first look at the upcoming crop of young artists enrolled at the University and they will have a variety of work exhibited from both the 2-Dimensional and 3-D areas," said Pam Price, UTPB's Mr. and Mrs. Louis Rochester Professor in Fine Arts.

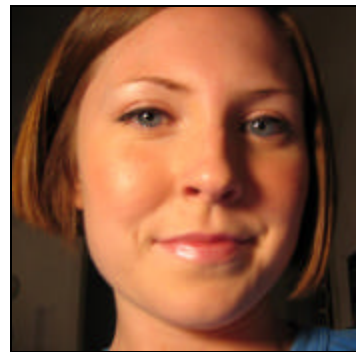
The exhibition will be on display through Jan. 10. Gallery hours are 9 a.m.-9 p.m. Monday-Thursday, 9 a.m.-5 p.m. Friday, and 2 p.m.-5 p.m. Saturday and Sunday. There is no admission charge.



The guitar still life, above, was created by freshman Erik Quiroz. He is a computer science major with a minor in art. The picture of the dogs (in photo on left) was done by fellow freshman Jessica Valenzuela, an art major.



Face it: Amber Kappes can paint!



UTPB graduate Amber Kappes (in photo on left), was notified that one of her portraits is a semi-finalist in a national art gallery competition. The selected portrait (far left) is of fellow UTPB art students.

UTPB Fine Arts graduate Amber Kappes recently had one of her portraits named a semi-finalist by the National Art Gallery in Washington, D.C.

More than 4,000 artists entered the competition. A jury of the National Portrait Gallery's Outwin Boochever Portrait Competition will announce the winners in March 2006. The winners will be displayed in a summer exhibit in the national

art gallery. Kappes' portrait is of two other UTPB art students. "I'm really excited even though it is agonizing to wait until March for the finalists to be announced," she said. There will be 50-60 painting and sculpture finalists, a grand prize of \$25,000, and the winner will be commissioned to paint a famous living American to join the gallery's permanent collection.

UT Permian Basin-Midland College

Teaching Site



at Midland College University Center

The following UT Permian Basin courses will be taught on the Midland College campus.

Prefix	Number	Section	Title	Days	Time	Instructor	Classroom
Arts	4389	MC1	HIST of Photography	T R	11 a.m.-12:15 p.m.	Woods	MCPB8A
Child and Family Studies							
CHLD	3301	MC1	Introductory STATS	TR	9:30 a.m.-10:45 a.m.	Olson	MCPB8B
CHLD	3352	MC1	Exceptional Child	MW	8 a.m.-9:15 a.m.	Evans	MCPB8A
Criminal Justice Administration							
CJAD	6301	ITV	Crime & Crim Justice	M	5:40 p.m.-8:20 p.m.	Hollmann	MCLRC 207
CJAD	6310	ITV	Policy Eval in Crim	W	5:40 p.m.-8:20 p.m.	Kiekbusch	TBA
Communication							
COMM	3375	MC1	Political Comm	TR	2 p.m.-3:15 p.m.	Brantley	MCPB8A
Computer Science							
COSC	3310	MC1	Digital Comp Orgn	TR	8 a.m.-9:15 a.m.	Owen	MCPB8B
Education							
EDUC	3352	MC1	Exceptional Child	MW	8 a.m.-8:15 a.m.	Staff	MCPB8A
EDUC	3362	MC1	Found. of Bilingual Ed.	MW	9:30 a.m.-10:45 a.m.	King	MCPB8A
EDUC	4312	MC1	Curr. & Instruction	M	4 p.m.-6 p.m.	Staff	MISD
EDUC	4324	MC1	Literacy: EC-Grade 4	W	4 p.m.-6:40 p.m.	Cox	MISD
English							
ENGL	3300	MC1	Theory Apr to Lit	MW	5:40 p.m.-6:55 p.m.	Lagapa	LRC207
ENGL	3332	MC1	Literature and Art	M	2 p.m.-3:15 p.m.	Andres	LRC207
ENGL	3372	MC1	English Grammar	W	12:30 p.m.-1:45 p.m.	Babcock	MCPB8A
Geology History							
GEOL	4318	ITV	Geol of West Texas	R	5:40 p.m.-8:20 p.m.	Stoudt	MCPB8A
History							
HIST	3331	MC1	Tudor-Stuart England	W	7:05 p.m.-9:45 p.m.	Hinton	MCPB8A
HIST	3344	MC1	US 1828-1848	W	8 a.m.-9:15 a.m.	Akins	MCPB8A
Leadership							
LEAD	4339	MC1	Leadership & Ethics	W	5:40 p.m.-8:20 p.m.	Traut	MCPB8B
Mathematics							
MATH	3305	MC1	Math Reasoning	TR	2 p.m.-3:15 p.m.	Fawaz	MCPB8B
Political Science							
PLSC	4389	MC1	Leadership & Ethics	W	5:40 p.m.-8:20 p.m.	Traut	MCPB8B
Psychology							
PSYC	3301	MC1	Introductory Stats	TR	9:30 a.m.-10:45 p.m.	Olson	MCPB8B
PSYC	4341	MC1	Exceptional Child	MW	8 a.m.-9:15 a.m.	Evans	MCPB8A
Sociology							
SOCI	4389	MC1	Leadership & Ethics	W	5:40 p.m.-8:30 p.m.	Traut	MCPB8B
Spanish							
SPAN	3302	MC1	Adv Convers & Comp	MW	12:30 p.m.-1:45 p.m.	Leon	MCPB8B
SPAN	4351	MC1	Mexican Literature	MW	11 a.m.-12:15 p.m.	Torufo	MCPB8B

IRS to conduct job interviews at UTPB

The IRS is one of the largest governmental agencies in the United States. They will be hiring more than 290 new staff between now and January 30, 2006.

The UTPB Career Services Department and the UTPB Accounting/Business Association will be

hosting two informational sessions on Wednesday, Nov. 30 in the UTPB Multi-purpose Room (located north of the Student Union).

Guest Speaker is Oliver Martinez, Recruiter of the Internal Revenue Service. Session One is set for 2 p.m. and Session Two at 6 p.m. Both ses-

sions are open to the public. Refreshments will be served.

Jobs with the IRS include: appeals officer, computer specialist, contact representative, economist, revenue agent, revenue officer, special agent, tax examiner, tax law specialist and tax specialist.



Registration going on now for Spring 2006!

Some courses and degrees available online.

www.utpb.edu
For admission information call (432) 552-2605