

ENLIGHTENING THE "YOUNGER WOMEN IN SIGMA"

The Dawn Newsletter

Highlights

- Southeast Region Area Meeting 2005 Schedule
- Southeast Regional Response to Hurricane Katrina
- Soror Knight just "keepin' it real."

Volume 2, Issue 1

Fall 2005

Notes From the Desk of Your SER UCC...

Greetings Undergraduate Sorors!

I wanted to do this newsletter just for you... to give you

the "411" on some things you need to keep in mind.

First of all, it is a new school year. Have you paid your dues? I am sure you have...it is important that you are in good financial standing with the sorority.

Remember, Sigma can't live on love alone, she needs your money too.

Have you been meeting with your graduate chapter advisor? She is there to assist you and to serve as a representative to you, an ambassador, from the graduate chapter. Remember, you cannot hold meetings without her so be sure you coordinate your meetings and your activities with her schedule. If she cannot be there for

you due to a schedule conflict, she is supposed to designate someone from the graduate chapter to be there to assist you. Let's work with our advisors and utilize them to assist in the growth and development of your chapter.

Have you been TORCH trained? If not, be sure you come to the area meeting.

Have you decided to have an intake this semester (or in the Spring)? If so, remember your TORCH calendar must be submitted to the Syntaktes 14 days prior to your INFORMAL rush. Please be sure you follow the rules as it relates to TORCH activities. TORCH violations will NOT be tolerated.

Please be sure to share information that you receive from your graduate chapter or your regional officers with other members in the chapter. In order to handle Sigma Business, we must

be informed. Knowledge definitely is power and in a sisterhood, all the knowledge cannot reside in one individual. We must share what we know in order to help each other grow.

Information forthcoming for undergraduates includes the following:

*criteria for applying for scholarships and the Undergraduate Chapter Development Grant

*information on submitting a nominee for Advisor of the Year.

*criteria for Undergraduate Chapter of the Year

*Undergraduate GPA Recognition/Scholastic Achievement

Just a few notes from the one known to "Keep it Real"

Sisterly,

Get Ready for Regional Conference 2006!

Is Florida really ready for that RHOyal invasion?

Well, join the troops as we storm **West Palm Beach/Stuart** (Hutchinson Island) the weekend of **March 10-12, 2006**.

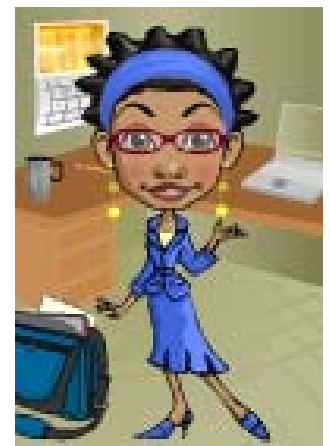
This Regional Conference will be one that you will not forget.

You may have missed it when the SGRhos took over the Virgin Islands this summer but you still have a chance to take care

of business in style at the luxurious **Hutchinson Island Marriott Beach Resort and Marina**.

This year, the undergrads are strongly encouraged to be there as this conference is especially for you, the future of Sigma.

Please make every effort to attend. Start saving and fundraising today!



Enlightening the "Younger
Women in Sigma"

Soror Griena H. Knight
Southeast Region
Undergraduate Chapter
Coordinator
5413 Court H Ensley
Birmingham, Alabama 35208

Phone: 205-923-7347
Fax: 205-929-9974
Email: Griena@aol.com
DC: 154*135136*13

Check out the webpage at
[http://www.geocities.com/
griena4u](http://www.geocities.com/griena4u)

The 2005 Southeast Regional Area Meeting Schedule

September 24, 2005

Charleston, SC

October 1, 2005

Chattanooga, TN

October 8, 2005

Orlando, FL

October 29, 2005

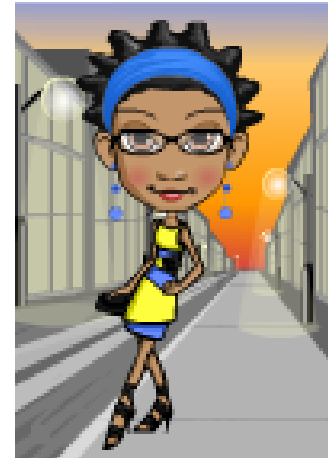
Atlanta, GA

November 5, 2004

Troy, AL

November 12, 2004

Alcorn State Area, MS



Area meeting highlights include a Regional Conference Update, TORCH Training, The Sigma Suit Exchange, and The Annie Neville Talent Competition.

Southeast Regional Response to Hurricane Katrina (from www.sgrho1922.org)

To assist sorors and affiliates who lost their homes and possessions, Sigma Gamma Rho has decided to contribute to the relief efforts for the victims of Hurricane Katrina in the Gulf Coast. The economic cost of the hurricane's rampage could be the highest in U.S. history, according to damage estimates.

As an organization, we are identifying sorors and affiliates that we can assist directly. I appeal to each of you to join in supporting this enormous undertaking. We, as an international organization and as a caring group of sorors and affiliates, can assist in helping to rebuild. The needs remain tremendous and the death toll continues to rise.

Areas affected were Bahamas, South Florida, Florida Panhandle, Alabama, Mississippi, Louisiana, Georgia, Tennessee Valley and Ohio Valley regions. Let's join in this effort to help our neighbors in this most critical moment.

Monetary donations (check or money order) for the **Southeast Region** can be forwarded to:

Mary Ann McCloud; Post Office Box 4564; Miami, Florida 33014.

Check should be made payable to **Southeast Region Sigma Gamma Rho** with a note that the funds are for "**Katrina Relief**".



Join the
**Southeastern Sigmas
E-Group for on line, e-mail
discussions at
www.yahoogroups.com**

A special thanks to the
Southeast Region State Liaisons
for your hard work and efforts:

Georgia-Keisha Simmons
Florida-Niccole Rogers
South Carolina-Tonya Foster
Mississippi-Pat Sheriff
Tennessee-Kay White
Virgin Islands-Beverly January

EE-YIP!!!