

CAPTAIN KELLY BROWN
4th Virginia Infantry, Company F
3224 S.E. Alder Street • Portland, Oregon 97214
503-231-1929

Uniform Standards

Fellow Virginians: This is a brief outline what we would like to see the majority of our company wearing. This is based on research and reflects what our regiment most likely was wearing in mid-1863.

Hat: Brown or black slouch hat with binding around the brim and a band around the crown. This is by far the most common Confederate head gear. The slouch hat is to be worn with no hat cords and preferably without hat brass. If you do wear brass, then only a number "4" or a letter "F" may be worn.

Jacket: Richmond Depot Type II, preferably in wool jean, but wool is acceptable. Jackets must have sewn-down epaulets with nonfunctional buttons and sewn-down belt loops on the side, nine button fronts, with federal eagle buttons, block "I" buttons, Virginia State buttons, or wooden dish buttons. Epaulets may be trimmed with French blue, dark blue, or black piping, but untrimmed epaulets were more common. Most shades of gray or brown gray are acceptable.

Trousers: Richmond Depot trousers of wool jean or wool (wool will wear better and last longer). Most shades of gray or gray brown are acceptable. This style of trouser is distinctive with "mule ear" pockets on the front, and has a cloth adjustment belt and buckle across the back.

Shoes: CS or US pattern brogans.

Shirts: Civilian pattern shirts, preferably of a woven cotton stripe, check, or plaid. (Wovens will not have a right and wrong side. Printed stripes, checks, or plaids will have one side plain or wrong) Cotton prints are acceptable as long as the print is correct for the 1860s. Most prints found in modern fabric stores are not correct period prints and should not be used. Shirt buttons should be made of shell, china, bone, or milkglass, and be small: 3/8" to 5/16".

Belt: Georgia frame buckles or plain iron roller buckles with leather or tarred canvas belts.

Cartridge Box: Infantry cartridge box of CS or US pattern, with or without sling.

Cap Pouch: CS or US pattern. Pouch should be fleece lined to prevent loss of caps, and have a musket nipple pick.

Bayonet and Scabbard: Socket type bayonet, to fit your rifle. (The bayonet **MUST** fit your rifle and be capable of locking, since we use them to stack arms. Many bayonets require filing to fit properly). Scabbard may be of CS or US pattern.

Haversack: CS or US pattern, tarred or canvas.

Canteen: CS or US pattern.

Blanket: Gray or brown wool, or correctly patterned 1860s quilts are encouraged.

Pack: CS or US pattern double bag, single bag, or hard pack. Note: If you don't have a pack, then you must wear a blanket roll.

This is meant to give you a quick reference to check your current impression and to use as a guide when you buy additional items. Please take the time to compare your current impression with this list to see if you should make a few changes.

Here are some common authenticity mistakes:

Hats: Lack of binding around the brim and crown. Also, grommets or vents in the side of the hats are completely inaccurate. Some hats still sport hat cords. At the very most hat brass should only be a number "4" or a letter "F" but preferably nothing at all. Kepis or forage caps with colored bands are typical of VERY early war, and are not correct for our mid-1863 impression.

Jackets: A number of us have obtained Richmond Depot Type II jackets made of wool jean and we, as a unit, are looking much better. The plain shell jacket is not at all correct. The two most distinctive features of the Type II jacket are the epaulets on the

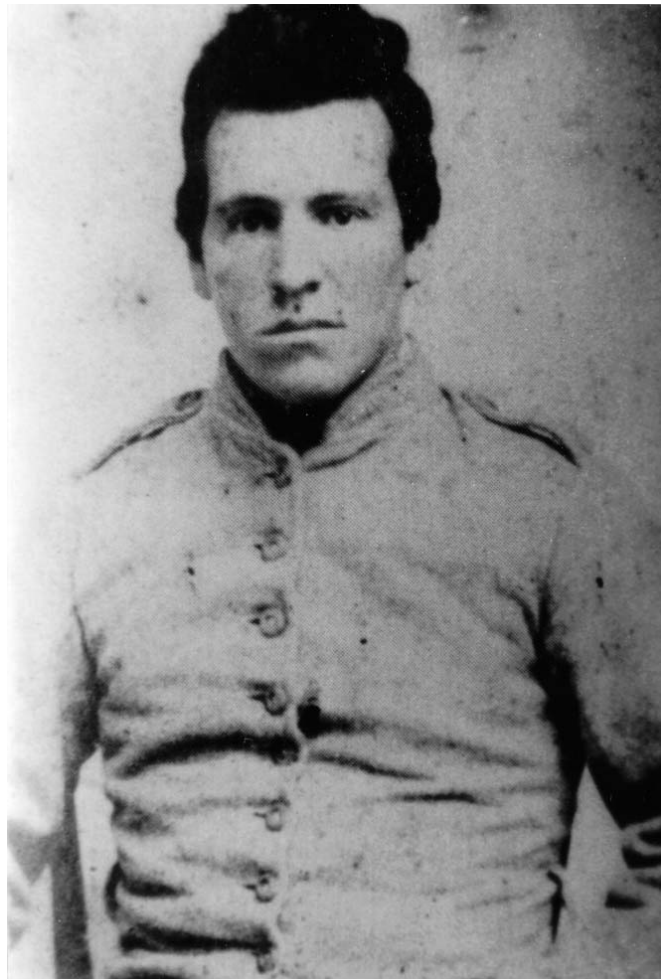
shoulder and the sewn down belt loops at the waist. Even more incorrect than the plain shell jacket is the jacket with a solid colored cuff and collar trim, except for some limited use by officers. These jackets would have been typical of VERY early war. If you do not yet have a Richmond Depot Type II jacket, then you should get one soon. I would highly recommend wool jean over wool, as well.

Buttons: Some people continue to wear CSA buttons on their jackets. These buttons were very rare during the Civil War and were actually designed for staff officers. When viewing original uniforms in the Museum of the Confederacy in Richmond I asked the curator what the most common button on Confederate uniforms was. The answer was, surprisingly, federal eagle buttons, followed by infantry "I" buttons, then state buttons.

We have an excellent photograph of Chuck Anderson's great-grandfather who was in Company F. He is wearing what appears to be a light gray Richmond Depot Type II jacket made of wool jean, with the epaulets and belt loops clearly visible. There is no trim on the epaulets, and the buttons are plain wooden dish buttons. You can wear any of the four button types mentioned and be correct, but you should avoid CSA buttons like the plague.

Trousers: Many reenactors are still wearing federal issue sky-blue trousers. While the Confederates did wear federal sky blues it was not common for them to do so. The sky-blue trousers seem to have been clothing temporarily adopted by soldiers such as parolees until they could acquire Confederate-issue trousers.

Belts: Some Virginians are still wearing CS oval belt buckles. While there is ample photographic evidence to show Confederate soldiers wore captured US oval belt buckles, the CS oval was a rare item. There is some evidence that they were a little more common in the western theater; however they were uncommon in the Army of Northern Virginia and the eastern theater.



Second Lt. Barney B. Cannoy of the original 4th Virginia Infantry, Company F, great-grandfather of Chuck Anderson, founder of the Oregon 4th Virginia Infantry, wearing a Richmond Depot Type II jacket with wooden buttons.