

TJ100CP

STM-1 Service Access Node

The TJ100CP Service Access Node is an ultra-compact and cost-effective customer premises bandwidth provisioning equipment designed to meet low or medium capacity bandwidth service demands.

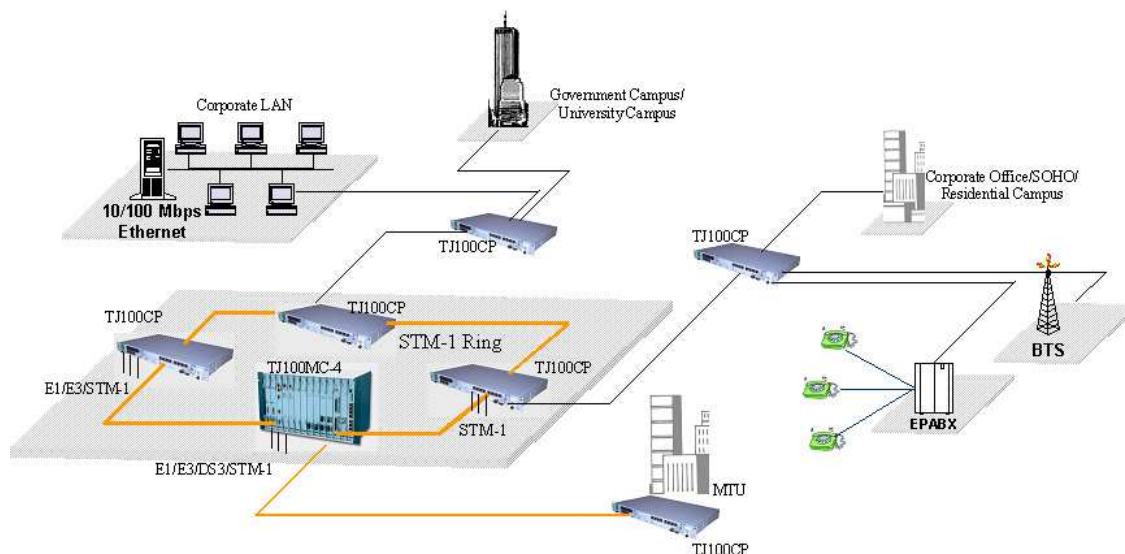
This unique product is part of a family of STM-1 Multi-Service Provisioning and Access Nodes from Tejas. As with all products in Tejas family, the Service Access node also supports end-to-end provisioning and management of voice and data services across all the segments of the optical network - from the customer premises to the core. It combines innovative optical networking software with the intelligence of SDH to deliver a flexible solution to today's service providers.



The TJ100CP can be configured as a Terminal Multiplexer (TMUX) or an Add-Drop Multiplexer (ADM), with E1, E3, DS3 or 10/100 Ethernet Interface service interfaces and trunk interfaces at STM-1 rate. The product has a built in non-blocking cross-connect at VC-3 and VC-12 granularity for efficient traffic grooming. In view of the growing demand for packet services, TJ100CP provides an Ethernet tributary interface to carry inter-office traffic from corporate LANs, campus networks or from ISPs.

Features	Advantages	Benefits
Low priced Terminal Multiplexer and Add-Drop Multiplexer	Can be placed in customer premises or access nodes	A practical and cost-effective solution catering to low volume traffic requirements
Seamless integration with the TJ100 family of equipment and management	Allows growth of network with more choices from a common family of products and with a single type of element management system	Easy and cost effective option to grow to a larger network with minimum increase in overhead costs
1U chassis – available in rack and wall mounting options	Compact Size	Better utilization of available rack space and easy installation in customer premises
Integrated multi-service delivery	Provision both voice and data services from the same Efficient use of transport bandwidth by supporting per-port rate adaptive Ethernet Services	Future-proof architecture protecting investment
Linear and ring topologies	Topology support to cater to all customer network scenarios	Flexible and cost-effective network solutions
Multi-level protection schemes – Unprotected, MSP, SNCP	Carrier-grade protection schemes enable you to cater to differing customer protection requirements	Creation of differentiated services to enhance the portfolio of service offerings
Advanced networking software with support for open standards such as GMPLS and OSPF	Enables automatic topology discovery, shared mesh restoration and Point- and-Click Provisioning (PNCP). User friendly GUI based Network Element Software for local and remote provisioning	Reduction in operational costs and increase in efficiency through lower provisioning time and operator intervention

Applications



Technical Specifications*

Network Topology

- Linear, Ring, Mesh

Network Element Configurations

- Add-Drop Multiplexer (ADM)
- Terminal Multiplexer (TMUX)

Aggregate Interfaces

- 2 x STM-1e/o
- S1.1, L 1.1, L 1.2 (ITU-T G.957 compliant)

Tributary Interfaces

- E1/DS1, E3/DS3
- STM-1o / STM-1e/E4

Ethernet Interfaces

- 8 port 10/100 Ethernet
- LCAS
- GFP/ X.86
- Lower and Higher Order Virtual Concatenation
- Full/half duplex, auto-negotiation

Cross-Connect

- 252 x 252 VC-12
- Fully non-blocking
- Line-to-Line, Line-to-Tributary, Tributary-to-Line, Tributary-to-Tributary

Power Supply

- -48V DC nominal, -36V to -60V or 230V 50Hz AC Power Supply
- Power consumption – less than

Network Maintenance

- Element Management System: TejNES supports full FCAPS functionality
- RS-232 port for craft interface
- In-band control support using SDH/SONET Overhead Bytes
- E1 management channel with drop facility
- Alarm signaling indicators and External Contacts

Maintenance

- Higher-order and Lower-order POH, SDH level alarms and performance monitoring as per ITU-T Rec. G.826 and G.784
- Software Downloads

Timing & Synchronization

- Timing & Synchronization of System as per ITU-T Rec. G.813
- Internal oscillator capable of supplying a G.813 compliant Stratum -3 SEC
- Support of SSM byte

- Internal & External Timing interfaces: Two E1 BITS interfaces (as per ITU-T G.703)

Order Wire Support, Alarms and User Data Channel

- E1/E2 bytes used for Express Order wire (Omnibus/Selective calling facilities)
- F1 byte for user data channel
- Five potential-free outputs and two potential-free inputs

Physical Dimensions

- Dimensions (H x W x D): 44 mm x 445 mm x 270 mm

Environmental

- Operating Temperature: 0°C to 50°C
- Relative Humidity: 10% to 90%, non condensing

* Specifications are subject to change without notification

Contact us at: sales@tejasnetworks.com

Visit us at: www.tejasnetworks.com

Tejas Networks, Inc.
595, Summer Street, Suite 2,
Stamford, CT 06901
USA

Tejas Networks India Ltd.
1st Floor, Zone 2, Khanija Bhavan,
49, Race Course Road
Bangalore 560 001, India
Phone: +91-80-2226 7495
Fax: +91-80-2226 7494

Tejas Networks Pte. Ltd.
6, Shenton Way
#28-09 DBS Building Tower Two
Singapore 068809

