

Rectifier

BULLETIN: 01.150/a
MARCH 2001

-48 VDC 400 AMP CONTROLLED FERRORESONANT



Model No. **Spec. No.**
PEC 3875B-L21 **6064246P**
PEC 3875B-L22 **6064247P**

- COMPLIES WITH BELL STANDARDS
- COMPLIES WITH GTE STANDARDS
- UL LISTED, CSA, NEBS LEVEL 3
- STAND ALONE OR PLANT CONTROLS
- ANALOG VOLT/AMP METERING
- 220, 480 VAC INPUT VOLTAGE THREE PHASE
- POSITIVE/NEGATIVE LOAD SHARING
- REMOTE LOCAL CONTROL
- FRONT ACCESS DESIGN
- FREE STANDING "SLIM LINE" CONSTRUCTION

DESCRIPTION: This Rectifier is designed to float or equalize lead-acid battery strings of 23 or 24 cells of either the wet cell or sealed cell design. The reduced overall size of the unit allows more rectifiers to be installed in a given space. The Controlled Ferroresonant design of this unit provides an efficient and cost effective approach to power conversion with the benefits of enhanced reliability, reduced TIF and RFI, improved power factor, and high immunity to transients.

TECHNICAL SPECIFICATIONS ELECTRICAL

OUTPUT

Voltage:	-52.08 VDC	(factory)
	-48.00 VDC	(minimum)
	-56.00 VDC	(maximum)
Regulation:	±0.5% (static)	±5% (dynamic)
Current:	400 Amp DC	(nominal)
	440 Amp DC	(limit)
Parallel Operation:	Yes	
Heat:	7500 BTU/hr	
Fuse:	500 Amp	
Recommended Cable Size:	500 MCM	

NOISE

C Message:	26	dbm
Wide Band:	250	mv
Acoustic:	60	dba

METERING

Output Voltage:	75 VDC	(maximum)
Accuracy:	±2%	analog
Output Current:	600 Amp DC	(maximum)
Accuracy:	±2%	analog

INPUT	L21	L22
Voltage: (minimum) VAC	187	424
(maximum) VAC	254	508
Current: (nominal) AAC	63	30
(maximum) AAC	82	39
Efficiency:	88.5%	88.5%
TIF:	1000	300
Contactor:	90 Amp	90 Amp
Input Fuse Per Phase		
(slow blow):	90 Amp	45 Amp
Power Factor:	98%	98%
Frequency	60±3Hz	60±3Hz
Power:	23,000W	23,000W
Phases:	3	3
Recommended Cable Size:	6-2Ga.	6-2Ga.

VISUAL INDICATORS/ALARMS

Input Power On:	green
Output Capacitor Charged:	red (until charged)
Equalize Mode:	yellow
Test Mode:	yellow
Input Device Closed:	circuit breaker
Output Device Closed:	fuse (visual)
Rectifier Fail Alarm:	red
Contacts:	1 form A (GRD SIG)
Low Output Current:	
Contacts:	1 form A
Setting:	4 Amp DC
Rectifier Fail/Low Current (PMN):	
Contacts:	2 form A

CLICK TO EXIT



CONTROLS

Remote Sense Voltage Control: yes
Output Capacitor Prechg. Switch: yes
Test Mode Switch: yes
Float Adjust Range: 48–56 VDC
 Setting: 52.08 VDC
Equalize Adjust Range: 50–57 VDC
 Setting: 54.00 VDC
Load Sharing: 0.25 VDC @ no load, 8 VDC @ full load (neg), or 10 VDC @ no load, 2 VDC @ full load (pos), or 0.5% (slope)
Internal High Voltage Shutdown: yes
 Setting: 55.00 VDC
 Lockout: yes
External High Voltage Shutdown: yes, (when above low current level)
Remote On: yes
Remote Off: yes
Remote Restart: yes, loop
Over Temperature Shutdown: yes
 Setting: 187°C (internal to ferro)

Humidity: 95% noncondensing (maximum)
Cooling Positions: 2 (above) NR (below)

MECHANICAL

Width: 26.00 in. (660 mm)
Depth: 15.00 in. (381 mm)
Height: 84.00 in. (2134 mm)
Front Access Design: yes
Cable Entrance: Input: top or top front
 Output: top or top front
Weight: 1450 lbs (652 kg)
Colors: blue/gray (other colors are available-consult factory)
Finish: spattered vinyl

DOCUMENTATION

Instruction Manual: 6424398
Mechanical Drawing: 6064246

ORDERING INFORMATION

<u>Part Number</u>	<u>Spec. Number</u>
6064246P	PEC 3875B L-21, 220 VAC input
6064247P	PEC 3875B L-22, 480 VAC input
	600 VAC input, (consult factory)

ENVIRONMENTAL TEMPERATURE

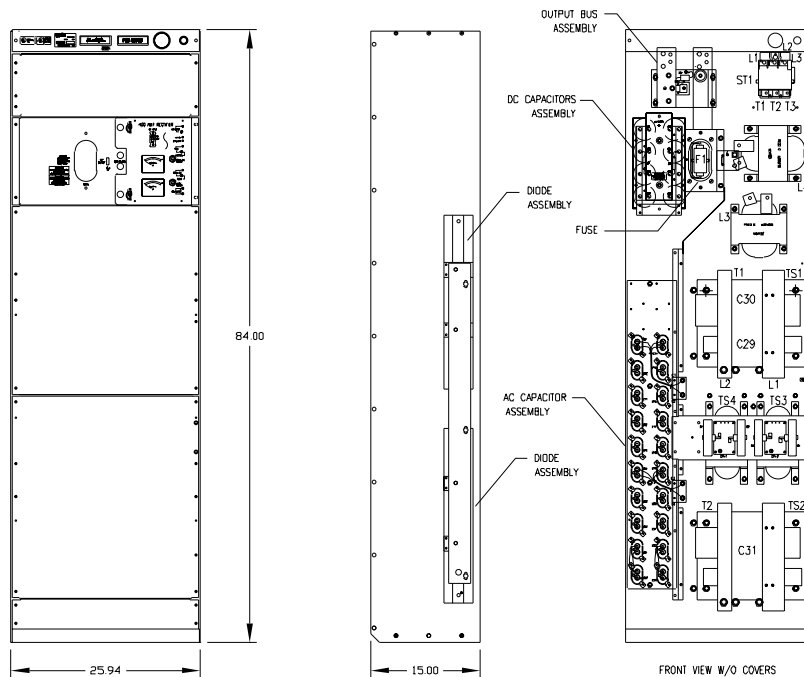
	<u>MINIMUM</u>	<u>MAXIMUM</u>
Storage Ambient:	-40°F (-40°C)	185°F (85°C)
Operating Ambient :		
Sea Level to 4800 ft.	32°F (0°C)	122°F (50°C)
4800 ft. to 7000 ft.	32°F (0°C)	113°F (45°C)
7000 ft. to 10,000 ft.	32°F (0°C)	104°F (40°C)

SPARE PARTS

<u>Part Number</u>	<u>Description</u>
6423389	PEC 3875B Spare Parts Kit

Specifications are subject to change without notice. Please contact our website for the latest version.

OUTLINE DRAWING



CLICK TO EXIT

