

**ELECTRONIC KNOWLEDGE SYSTEM
ON LANGUAGE OF GESTURES**

INTERNET/INTRANET VERSION

USER'S GUIDE

Getting started

1.1. What is ELECTRONIC KNOWLEDGE SYSTEM?

ELECTRONIC KNOWLEDGE SYSTEM is a system assisting intellectual activity. It was developed to help to identify and to classify situations and to get advices how to solve problems.

Ideas source of Electronic Knowledge System on Language of Gestures is Pease A.V., Body language, 1981, Australia, ISBN N 095936580 OX.

1.2. What you should know first

Before you begin using E-Knowledge System, you need to understand the fundamentals of using operating systems like MS Windows and Linux. It is assumed that you know how to create and view directories, edit files, copy and print files, run programs.

1.3. Hardware and software requirements of E-Knowledge System

Operating systems: MS Windows, Linux, Unix, Mac OS X 10.

Any graphical Internet browser like Internet Explorer, Firefox, Opera in a case of using Internet/Intranet version.

Pop-up windows should not be blocked in a browser.

1.4. User interface

E-Knowledge System user interface is mouse-driven windows-style, and there is no need to know any special commands. Usually you should use buttons, listboxes and checkboxes to control it.

1.5. Features supported

- Possibility to search for appropriate chapter of the questionnaire for a problem's description input;
- Unlimited number of propositions on your problem;
- Propositions sorted according to the Proposition Value Index (PVI), which shows how much the proposition takes into account known information;
- Possibility of getting proposition's description;
- Possibility to view any knowledge item selected from the list.

Setup

2.1. Starting Internet version of E-Knowledge System

To start E-Knowledge System:

1. Start graphical browser
2. Go to URL like: <http://host/gestures>

Program dialogue

3.1. After start you will see a picture like the following.

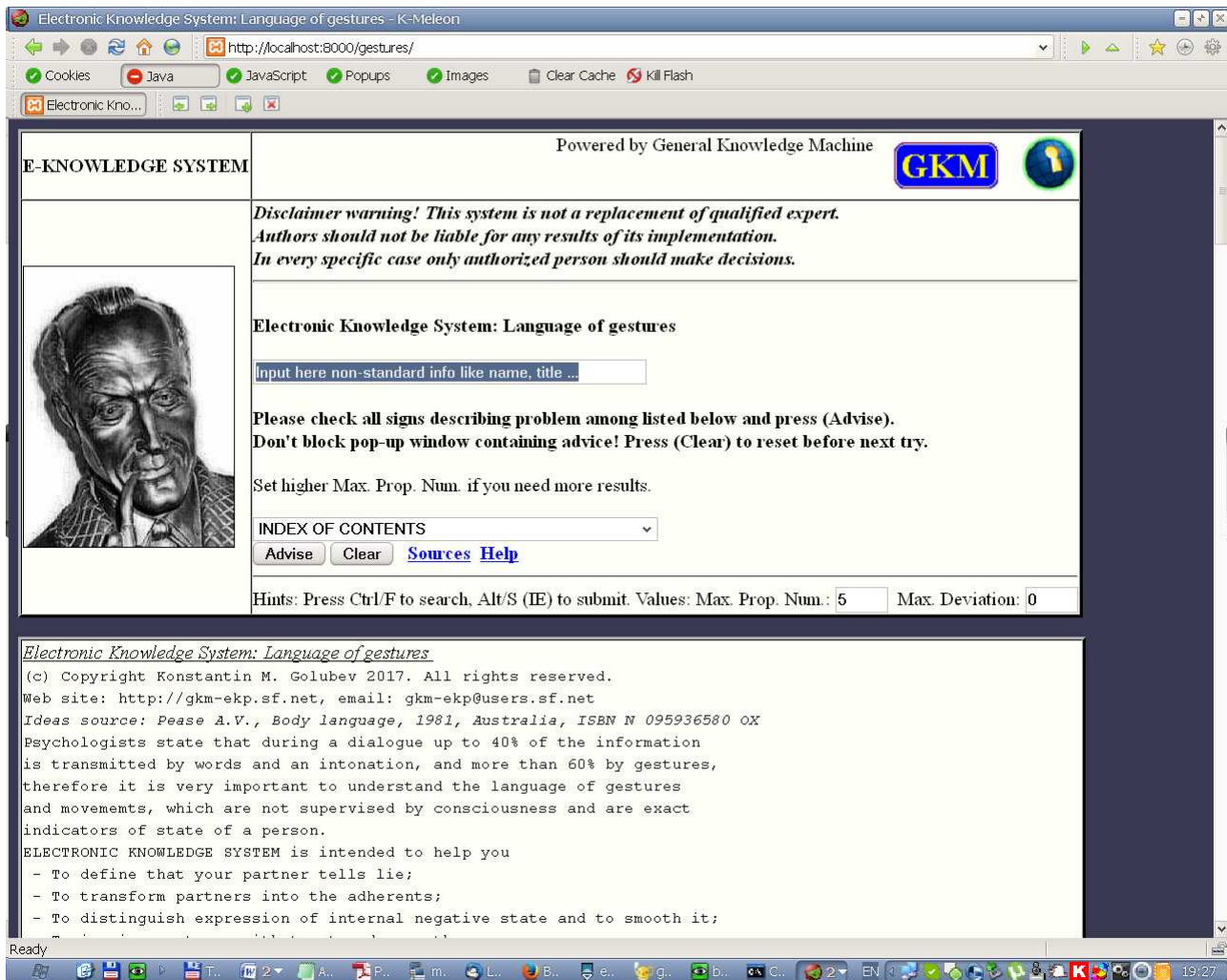


Figure 1.

Every time E-Knowledge System is ready to get a description of a problem, you will see this picture.

If you press "**INDEX OF CONTENTS**", control will be focused on the listbox of problem description questionnaire index.

If you press "**Advise**", there will be initiated propositions issuing to find possible solutions. Answer will be placed into the second browser window.

If you choose "**Clear**" you will reset the form.

If you press "**Sources**" you will get indexed list of texts of all propositions descriptions.

If you choose "**Help**" you will get this manual.

3.2. Input of description.



INDEPENDENT VERIFICATION PROJECT - CONSULTING POINT ON PAINTING - K-Meleon


http://localhost:8000/renais/

✓ Cookies ✓ Java ✓ JavaScript ✓ Popups ✓ Images Clear Cache Kill Flash

INDEPENDEN...

E-KNOWLEDGE SYSTEM

Powered by General Knowledge Machine  



**Disclaimer warning! This system is not a replacement of qualified expert.
Authors should not be liable for any results of its implementation.
In every specific case only authorized person should make decisions.**

INDEPENDENT VERIFICATION PROJECT - CONSULTING POINT ON PAINTING

Unknown

**Please check all signs describing problem among listed below and press (Advise).
Don't block pop-up window containing advice! Press (Clear) to reset before next try.**

Set higher Max. Prop. Num. if you need more results.

INDEX OF CONTENTS

[Sources](#) [Help](#)

Hints: Press Ctrl/F to search, Alt/S (IE) to submit. Values: Max. Prop. Num.: 5 Max. Deviation: 0

INDEPENDENT VERIFICATION PROJECT - CONSULTING POINT ON PAINTING

General Knowledge Machine Research Group
(c) Copyright Konstantin M. Golubev 2017. All rights reserved.
Web site: <http://gkm-ekp.sf.net>, email: gkm-ekp@users.sf.net
Ideas source: Renaissance painting from Breughel to El Greco,
Text by Lionello Venturi, Translated by Stuart Gilbert,
(c) 1979 by Editions d'Art Albert Skira S.A., Geneva, ISBN 0 333 26644 7

DISCLAIMER WARNING!
This kind of system is intended to assist in paintings evaluation.
It shouldn't in no way replace qualified expert!

Figure 2.

Input name of a patient. Checking listbox **INDEX OF CONTENTS** you may choose chapter of questionnaire to look for.

Index is the following:

EYES

HEAD

HANDS

FINGERS

PALMS

HANDSHAKING

BODY

LEGS

NEGOTIATING AT A TABLE

BEHAVIOUR IN GROUP

GLASSES

SMOKING

RESIDENCE

For example, you may choose '**GLASSES**'.

After that you should select signs describing problem.

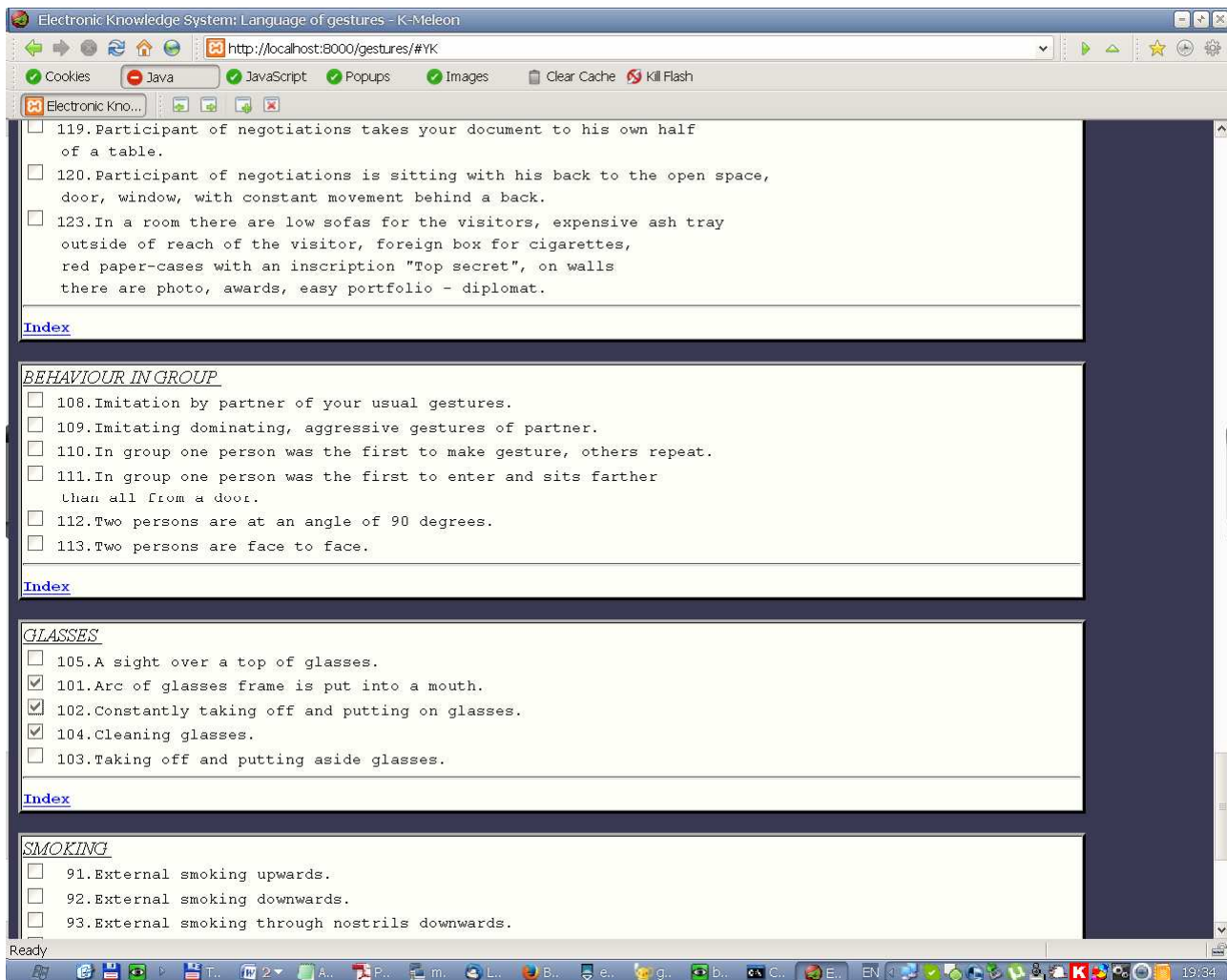


Figure 3.

For example, on the Figure 3 you see choice of sign's number 679. You should be careful answering because quality of advices is dependent of quality of answers.

3.3. After pressing [Advise] you will see figure like Fig. 4.

Hints: Press Ctrl/F to search, Alt/S (Internet Explorer) to submit. You may enter Max. Prop. Number value from 1 to 100: lower value results in less propositions produced, higher value leads to more number of propositions.

If you finish input, after waiting of completion you will see in a second window the figure like Fig. 4.

Electronic Knowledge System powered by General Knowledge Machine - K-Meleon

http://localhost:8000/gestures/gkminter.php

Electronic Knowledge System on Gestures

GKM

Description of the problem

A man

101. Arc of glasses frame is put into a mouth.
102. Constantly taking off and putting on glasses.
104. Glasses cleaning.

THE BEST PROPOSITIONS

Parameters : grades deviation = 0%, min. index. = 1%, max. prop. num. = 5

Index	Proposition	(Total 1 of 99 (1. %))
100 %	81. Consideration.	

According to presence of the signs:

101. Arc of glasses frame is put into a mouth.
102. Constantly taking off and putting on glasses.
104. Glasses cleaning.

Proposition 1

81. Consideration.

Complete description

101. Arc of glasses frame is put into a mouth.
102. Constant taking off and putting on of glasses.
104. Glasses cleaning.

Recommendations

Wait awhile

[Index](#)

Figure 4.

You will see a list of propositions, the most valuable are the first. If you want to see more detailed information on a proposition you should select appropriate item. It is like on the Figure 5. You may print it for further use.

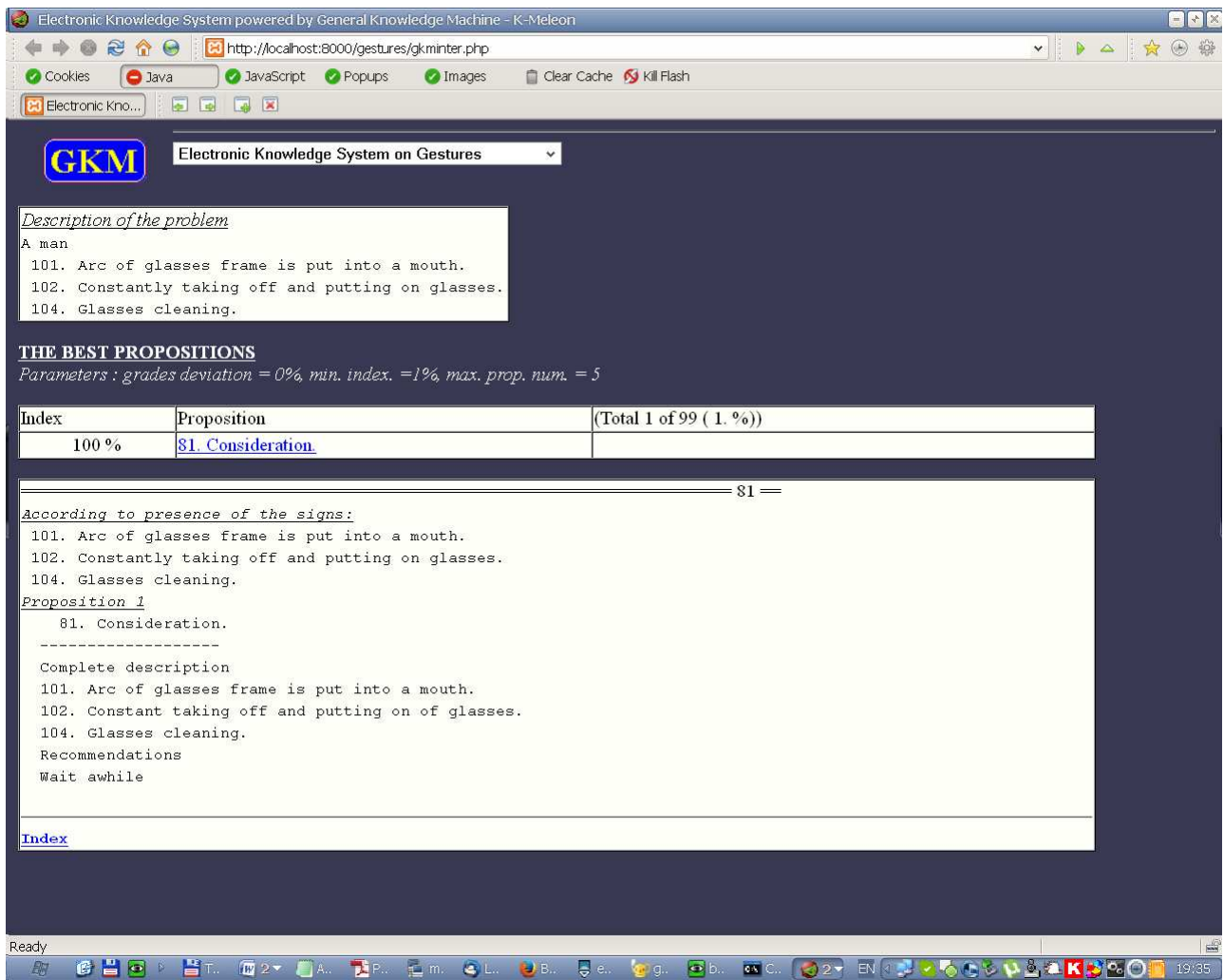


Figure 5.

If you will choose detailed description, you will see a figure like Fig. 6.

Electronic Knowledge System powered by General Knowledge Machine - K-Meleon

http://localhost:8000/gestures/gkminter.php

Electronic Knowledge System on Gestures

GKM

Description of the problem

A man

101. Arc of glasses frame is put into a mouth.
102. Constantly taking off and putting on glasses.
104. Glasses cleaning.

THE BEST PROPOSITIONS

Parameters : grades deviation = 0%, min. index. = 1%, max. prop. num. = 5

Index	Proposition	(Total 1 of 99 (1. %))
100 %	81. Consideration	

81 ==

According to presence of the signs:

101. Arc of glasses frame is put into a mouth.
102. Constantly taking off and putting on glasses.
104. Glasses cleaning.

Proposition 1

81. Consideration.

Complete description

101. Arc of glasses frame is put into a mouth.
102. Constant taking off and putting on of glasses.
104. Glasses cleaning.

Recommendations

Wait awhile

[Index](#)

Figure 6.

3.4. If you will press [SOURCES] looking at Fig. 1 you will see a figure like Fig. 7.

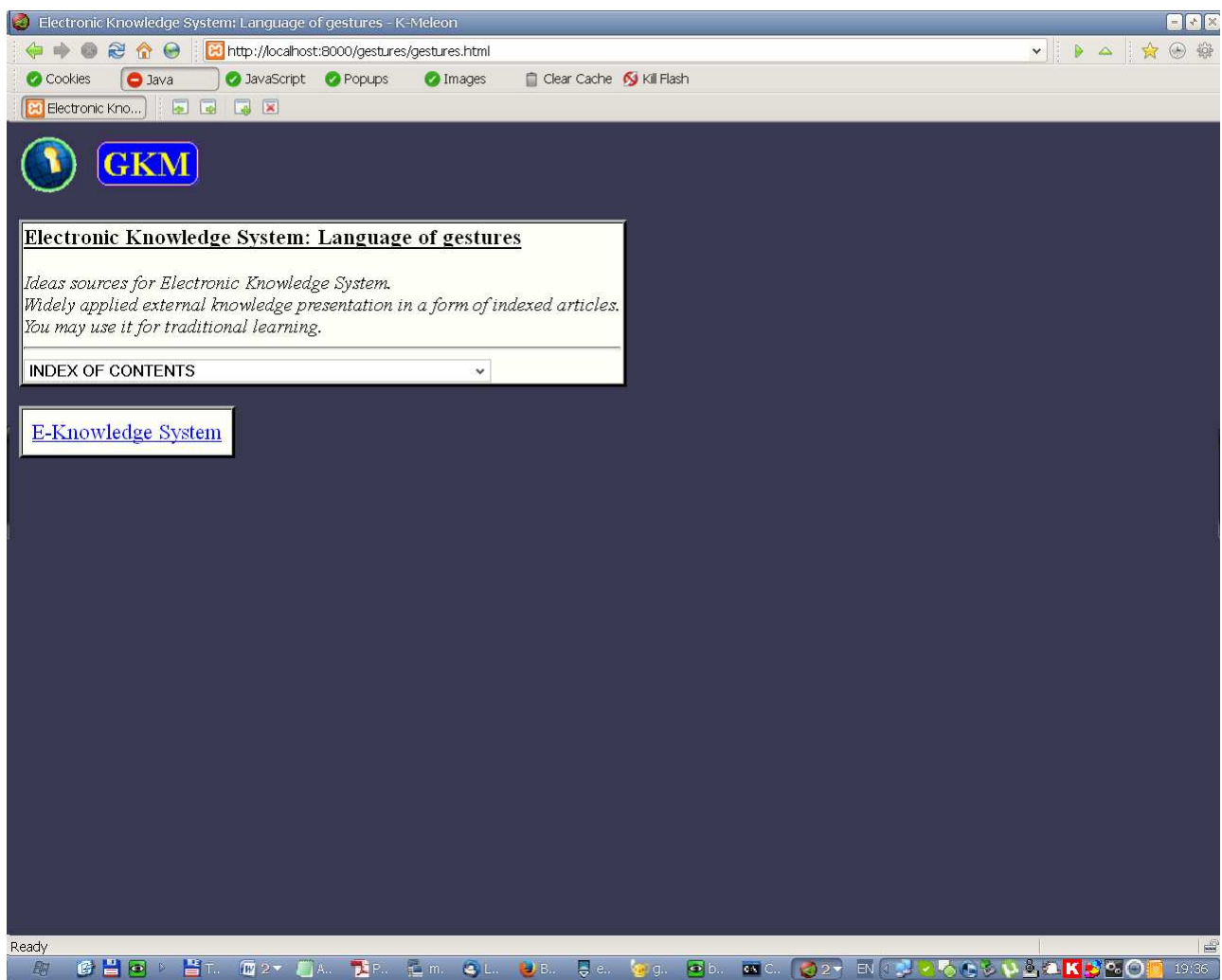


Figure 7.