

Gilliam County SWCD Mission Statement

Our mission is to provide support for economic sustainability for the rural community and to educate and assist the community in conservation while maintaining soil and water resources for the future. As a small community we are able to work with one another and help each other with the assistance of our district directors, the Oregon Department of Agriculture, the Natural Resource Conservation Service, the Oregon Association of Conservation Districts, and the Gilliam-East John Day Watershed Council.

Gilliam County SWCD Vision Statement

The Gilliam County SWCD's vision is to recognize and maximize the production of crops and livestock through the utilization of natural resources, while remaining environmentally and economically sustainable. We want to ensure maximum benefits from the conservation practices employed in Gilliam County.

Gilliam County SWCD Values & Principles

The values we hold are honesty, integrity, trust, and economic viability in the pursuit of sustainable agriculture. We treat each other and the members of our community with the utmost respect and strive to put forth our best efforts at all times.

Gilliam County SWCD Roles & Relationships

The Gilliam County SWCD cooperatively resides in the USDA Service Center with the Farm Service Agency and the Natural Resources Conservation Service, the Gilliam-East John Day Watershed Council, and the Oregon State University Extension Service. Grants are provided through the Oregon Department of Agriculture, the Oregon Watershed Enhancement Board, and Bonneville Power Administration. Supporting agencies include the Oregon Association of Conservation Districts, the Gilliam County Weed Department, the Gilliam County Planning Department, the Oregon Department of Fish and Wildlife, and other government agencies.

Board of Directors-background

Rich Harper, Chair - Rich and his wife Alice manage the Circle W Ranch. The Circle W is a diverse landscape with canyon pastures, dryland wheat fields and creek bottoms on Rock Creek.

Georgia Van Winkle, Vice-Chair - So, who would not like to run cattle at Lost Valley? Georgia and her husband Jim manage the Hardy operations at Lost Valley. They previously lived in Heppner.

Nick Welp, Past Chair - Nick and his wife Diane farm dryland wheat and irrigated crops on the lower end of Rock Creek. Nick might not get rain every year, but the views are great.

Dennis Goodwin - Denny and Rita live at Buckhorn where they help out on the Rattray Ranch, a combination of dryland wheat and grazing ground moving west down Thirty Mile Creek to the John Day River.

Howard Dyer - Howard farms family land in the Mayville area. One of the more well rounded board members, Howard also plays in a band, D.J.'s, and does volunteer work for Wheeler and Gilliam County.

Mike Yutzie - Recently appointed to fill the position previously held by Jordan Maley, Mike is a cattleman from the Cedar Springs area. Mike and Connie Jo, a Nazarene minister, are long time residents of the county.

Fish Screen and Ladder project constructed in Lonerock Creek by the Oregon Department of Fish & Wildlife's Fish Screening and Passage Program out of John Day, Oregon.



Gilliam County SWCD Board Meetings

2nd Tuesday of the month
March through October: 7:00 am and
November through February: 11:00 am
No meetings held during summer recess July - August
Upstairs Dunn Bros. Building Conference Room
333 South Main Street
Condon, Oregon



Gilliam County Soil & Water Conservation District

2006-2007 Annual Report





GILLIAM COUNTY SOIL AND WATER CONSERVATION DISTRICT

2005-2006 Annual Report

December 6, 2007

TO PROMOTE SUPPORT FOR ECONOMIC SUSTAINABILITY FOR THE RURAL COMMUNITY WHILE MAINTAINING SOIL AND WATER RESOURCES FOR THE FUTURE.

Contents in this report:	
Gilliam SWCD Statistics	1
History	1
Board of Directors	1
District Staff	1
Financial Report	1
Letter to Membership	2
Transitions	2
Gilliam-E.J.D.W.C	3
OWEB Grants - Large	4
OWEB Grants - Small	5
CREP in Gilliam County	6
Vision & Values	7
Mission Statement	7
Roles/Relationships	7
Board of Directors	7
Board Meetings	7



- 2006-2007 Gilliam County SWCD Statistics**
- Area: 782720 acres
 - Numbers of Farms: 255
 - Crop land acres: 255,907
 - Rangeland acres: 409,304

History: The Gilliam County Soil and Water Conservation District (SWCD) was formed on April 22, 1946, under the Oregon State Statutes, Chapter 586, Sections 210-800. The district boundaries are identical to the county's boundaries. The district was formed to provide technical assistance in meeting the district landowners' soil, water, and wildlife conservation needs.

Originally, objectives included research requirements, special equipment needs, new grass and legume trials, and technical assistance on conservation needs. Today's objectives include reducing soil erosion and improving water conservation and quality.

The Gilliam County SWCD serves as a liaison between local landowners and the technical resources available through government agencies such as the Oregon Department of Agriculture (ODA), the Natural Resource Conservation Service (NRCS), and the Conservation Reserve Enhancement Program (CREP). Agency programs include the Federal Clean Water Act, the Agricultural Water Quality Act, the Endangered Species Act, and the Bonneville Power Administration (BPA) Sub-Basin Plan. The SWCD also serves as the Advisory Committee for the Gilliam County Weed Control District.

Gilliam County SWCD technicians are involved in planning and developing conservation projects, assessing and monitoring the condition of the area's natural resources, acquiring funding to support these projects, and providing the technical assistance needed to improve the health of the Lower John Day Watershed.

Gilliam County Soil & Water Conservation District
 P.O. Box 106 ~ 333 South Main Street
 Condon, Oregon 97823
 Ph: 541-384-2672 ~ Fx: 541-384-2571
 Web Page: <http://www.geocities.com/gilliamcountyswcd/>

District Financial Report
July 1, 2006 through June 30, 2007

<u>Revenues</u>	
Grants/Distributions	\$308,284
Interest/Misc.	3,743
Total Revenues	\$312,027
<u>Expenditures</u>	
Conservation	\$315,528
Capital Outlay	4,539
Total Expenditures	\$320,067
Revenues over Expenditures	\$ -8,040
Beginning Balance	\$ 65,806
Ending Balance	\$ 57,766

The Gilliam SWCD is an ADA/EEO Employer.

- Gilliam SWCD Board of Directors**
- | | |
|-------------------------------|----------------|
| Rich Harper, Chair | Dennis Goodwin |
| Georgia VanWinkle, Vice-Chair | Nick Welp |
| Howard Dyer, Sec/Treasurer | Mike Yutzie |
- Gilliam SWCD Associate Directors**
- | | |
|---------------|-------------|
| Dewey Kennedy | Vic Miller |
| Jordan Maley | Josh Coiner |
| Damon Brosnan | |

Gilliam County Soil and Water Conservation District Staff

District Manager/Watershed Technical Specialist, Walter Powell - 384-2672
 Financial Officer, Cheryl Arnst - 384-2281, ext 108
 Gilliam-East John Day Watershed Council Coordinator, Teri McElroy - 384-2281, ext 111

Oregon Extension Service	2006-2007 NRCS Staff
Extension Officer, Jordan Maley - 384-2281, ext 102	District Conservationist, Josh Coiner - 384-2281, ext 107
Office Coordinator, Judy Jaeger - 384-2281, ext 101	Soil Conservationist, Damon Brosnan - 384-2281, ext 114
4-H Faculty, Cindy Osterlund - 384-2281, ext 110	Basin Team Leader, Jay Gibbs - 541-676-5121, ext 112
Research Assistant, Russell Long-Thompson - 384-2271	NRCS Office Assistant, Kathy Street - 384-2281, ext 104

The Conservation Reserve Enhancement Program (CREP) In Gilliam County

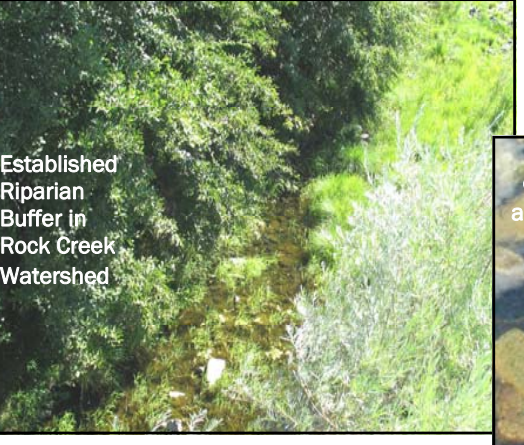
Under the leadership of Bill Ewing, the district continued to expand SWCD acres in Gilliam County over the past year. We are looking forward to the contribution of the incoming CREP Tech as he figures out the arcane involvement of at least four differing governmental agencies in this program.

The picture on the front of our annual report is from one of the first projects in the county on Thirtymile Creek. We now have projects in place, or in the works on all of the major tributaries of the John Day River.

An added advantage of having a CREP Tech in the office is having an individual on hand to help you, the landowner, with other riparian needs. There are many differing ways to bring back a riparian area. Sometimes a landowner would prefer not to have total exclusion of the cattle. The job of the Riparian Tech is to work with the landowner and make sure the plan fits the landscape and the owner, not try to bend or fold the land to the plan.

We have noticed significant gain in knowledge base over the last eight years as agencies and planters are figuring out what will work on the landscape and what types of plants actually do grow when you plant them.

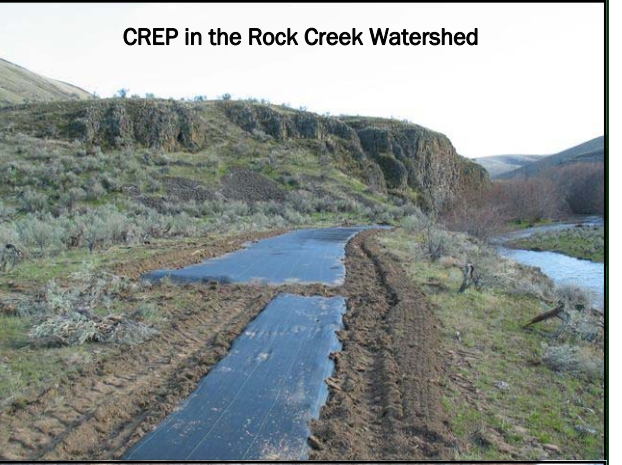
We look forward to working with you in 2008 when you decide to start rehabilitating your riparian zones.



Established Riparian Buffer in Rock Creek Watershed



Young Steelhead in an established CREP project area along Thirtymile Creek



CREP in the Rock Creek Watershed



The 3 pictures below show a well established CREP Project planted in the late 90's in the Hay Creek Watershed



OWEB Small Grants

Do you want to reclaim a lost spring? Do you want to extend a cross fence? Does some part of your plan not quite fit with your EQIP grant from NRCS?

All of the above are examples of grants awarded by the SWCD under the OWEB Small Grant program.

This program is funded on a biennial basis by OWEB to the SWCD. Each grant can be supported by up to ten thousand dollars in OWEB funds. Sixty six thousand dollars will be disbursed during the current funding period.

This is an opportunity for the district and for landowners to stretch funding to more land, more people and more projects.

Maybe the thing we like the most about small grants is that the the district and the watershed council determine the viability of the projects basis standards set by the district and reviewed by OWEB. These are dollars we can count on for local needs.



Livestock and Wildlife Watering Project with Well



Upland Spring Development in the Thirtymile Creek Watershed



Solar-Powered Upland Watering Project with Spring Development



Pond Development Project in Mayville

LETTER TO THE MEMBERSHIP

*The only certainty is that there is no certainty.
Decisions are a matter of weighing probabilities.
Despite uncertainty, we must act.
Judge decisions not only on results, but also on how they were made.
~ Robert Rubin*

What does the above have to do with the Gilliam SWCD Annual Report? Who knows, everything or nothing, I like the quote.

The last year has been one of progress as well as transition for the Gilliam SWCD. We have seen valuable employees seek other opportunities. We have seen valuable employees come on board to make their contribution to conservation efforts in the county. We have seen members of the board step aside and others take their place. A healthy churning that at times was a little turbulent for my taste to be honest.

- ❖ While moving toward completion of previously awarded large grants, we have initiated a new large grant and have two or three more new projects with potential in the pipeline.
- ❖ We have completed several small grants and are in the process of initiating seven or eight new ones for the upcoming two year cycle.
- ❖ The number of miles of CREP within the county continues to grow as more landowners find there is a place for CREP in their management portfolio.
- ❖ We are constantly expanding our base of known funding sources. We are working closely with the NRCS to make sure the best option for a project is provided to the landowner.

The diversity of the projects continues to expand. A listing of projects we are working on at this time would include:

- ❖ Juniper Pulling
- ❖ Juniper Cutting
- ❖ Annual Grass Control
- ❖ Development of an Intern Program with the Condon School District
- ❖ Direct Seeding
- ❖ Spring Development and Cross Fencing
- ❖ Grass Waterways

This is an exciting time for all of us at the SWCD. But it will only be successful if we are able to satisfy your conservation needs. "Where else can you invest in the future value of your land on a cost shared basis?"

Walter Powell, Past Chair, Gilliam SWCD

TRANSISTIONS

Fiscal Officer

Thirza Kilgore decided to leave and move on to other things in mid July. We thank her for the time and effort over the last year and look forward to working with her in other capacities.

Cheryl Arnst came on board in early August as a contract employee handling the fiscal matters of the district. Unless she succeeds in making a killing on Bidu stock, which is a possibility, we look forward to working with her for a long time. Cheryl and her husband Tim moved to Condon in 1996 and at the same time purchased the Condon Motel. They sold the Motel in 2006 and Cheryl has now chosen bookkeeping as her next frontier. While keeping the books for the district, she also keeps the books for other groups in the area.

CREP Tech

Bill Ewing decided to move into other areas of interest in early October. We will miss bird food blocks in the fall just inside the office and the canned Salmon from his fishing trip to Alaska every year

Watershed Tech

Kat Forrest left the district in early July. She and her husband still live in Lonerock where he works for Alma Campbell. Kat is substitute teaching in the Condon schools at this time.

Board Members

Jordan Maley, due to employer rules, moved from being a Board Member to an Associate Board Member. While we will not have his vote, we will still count on his views and advice.

Walter Powell moved from being Board Chair to employee this past fall. This move was undertaken by the board in order to control the amount of time he talked during meetings. So far, results are mixed.

Mike Yutzie from the Cedar Springs area replaced Jordan on the board this fall. If you see a lot of black cows in that area that all look great and exactly alike, they probably are managed by Mike, now a manager and partial owner of the herd. Congratulations to Mike.

GILLIAM—EAST JOHN DAY WATERSHED COUNCIL

The Gilliam-East John Day Watershed Council was established on June 11, 1997 by the Gilliam County Court in the State of Oregon. The purpose of the Gilliam-East John Day Watershed Council, as stated in their charter, is to address watershed management issues within the political boundary of Gilliam County and the Rock Creek drainage and to provide a framework for coordination and cooperation in implementing watershed improvement programs. The Gilliam-East John Day Watershed Council is an umbrella council for the five watershed working groups within the watershed council area: Ferry Canyon, Hay Creek/Scott Canyon, Thirtymile Creek, Rock Creek, and Lonerock Creek.

Fiscal Year 2006-07 Council projects included:

- ❖ The Lonerock/Thirtymile Integrated Weed Management Area Grant
- ❖ The Hay Creek/Scott Canyon Integrated Weed Management Area Grant
- ❖ The 2007-2009 Watershed Council Support Grant
- ❖ The Rock Creek Diversion Improvement project
- ❖ The Gilliam SWCD & Gilliam-East John Day Watershed Council Small Grant Program
- ❖ The Gilliam SWCD and Gilliam-East John Day Watershed Council Newsletter
- ❖ The Oregon Trout Salmon Watch Field Trip
(teaching students about macroinvertebrates and water quality)
- ❖ The Rock Creek/Lonerock Creek Watershed Assessment funded by an OWEB Large Grant



The Oregon Trout Salmon Watch Field Trip



In May 2007, the Gilliam County Weed Department coordinated with landowners to provide aerial spraying of herbicides to control the noxious weed infestations in the Lonerock /Thirtymile and Hay Creek/ Scott Canyon Integrated Weed Management Areas. These two grant projects were funded by the Oregon State Weed Board. These grants were written and submitted by the Gilliam-East John Day Watershed Council.

The Rock Creek/ Lonerock Creek Watershed Assessment Grant Award from OWEB

The Gilliam County Soil and Water Conservation District has been awarded a grant to conduct the **Rock Creek / Lonerock Creek Watershed Assessment** from the Oregon Watershed Enhancement Board (OWEB). It is scheduled to begin later this fall and run through June of 2009. The Gilliam-East John Day Watershed Council Coordinator will serve as project manager for this grant. Along with OWEB funding there will be many hours of donated services from the Gilliam Soil & Water Conservation District, the Natural Resource Conservation Service, Oregon Water Resources Department, Oregon State University Extension Service, Condon High School Vo-Ag Students, the Oregon Department of Fish and Wildlife, the Bureau of Land Management, Oregon DEQ, and the Gilliam-East John Day Watershed Council. Upon reviewing the proposals received, a decision was made by the Gilliam-East John Day Watershed Council to accept the proposal from ABR, Inc. out of Forest Grove. ABR, Inc. recently completed the Butte Creek Watershed Assessment for Wheeler County SWCD. They are looking forward to becoming involved with the community while conducting this watershed assessment.



The Rock Creek Diversion Improvement Project

This project was funded by a grant from OWEB and a cooperative partnership with ODFW

OREGON WATERSHED ENHANCEMENT BOARD (OWEB)

GRANTS

The lifeblood of the district in terms of helping landowners with land restoration is the OWEB grant program. Funded through Ballot Measure 66 in 1999, Oregon Lottery funds are dedicated to Watershed Restoration. Every biennium, the district is given funds dedicated to the small grant program explained on page 6. Further, each year, the district applies for grants dedicated to bigger projects. These grants are cost share grants that involve the landowners and the district matching funds with those provided by OWEB. This past September, over eight million dollars was presented on a cost share basis by OWEB to various districts, councils and other entities to further rehabilitation efforts across the state. For further information on these grants, go to the OWEB website: www.oregon.gov/OWEB.



Direct Seed / No Till / Residue Management Large Grant Project

OWEB Large Grants

Large Grants can cover everything from rehabilitation to education to assessment of Watershed need. Large Grants can run from something over ten thousand dollars to something over a million dollars. Twice each year, OWEB takes applications from all over the state. These applications are then evaluated for merit and then funded basis merit and available funds.

The district has two large grants in place at this time. One is covered by Teri in the Watershed Council Report. The other is the second in a series of grants provided by the district to those interested in trying Direct Seeding. We have now provided cost share funds to Direct Seed over eight thousand acres in the county.

An extension of the grants we are working on at this time is a program involving the Condon School District. As we fund large grants, we will be bringing on a student intern for a two year period to gain valuable experience as the intern sees the project through to completion. Part of this internship will involve writing a paper to complete their senior requirements.