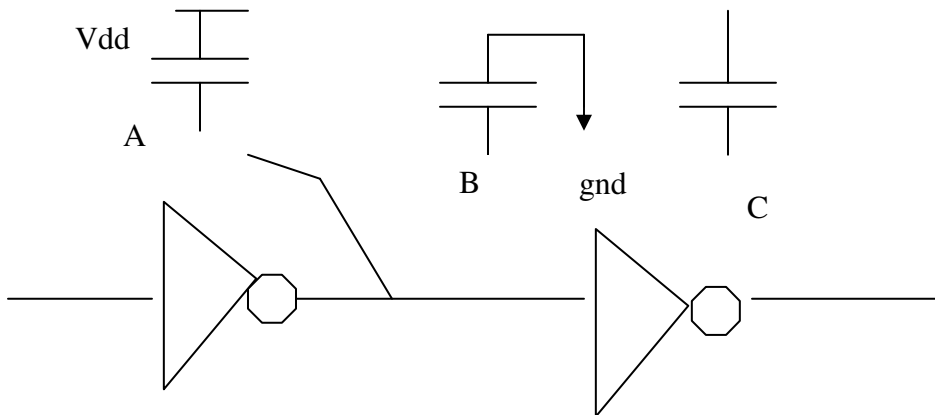


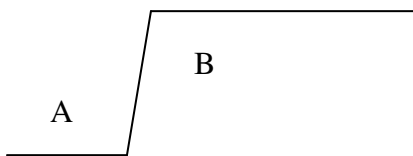
Ques:

What is the effect on rise and fall time at the Vout (Vin is a puse waveform) if switch is connected to A, B or C



Answer:

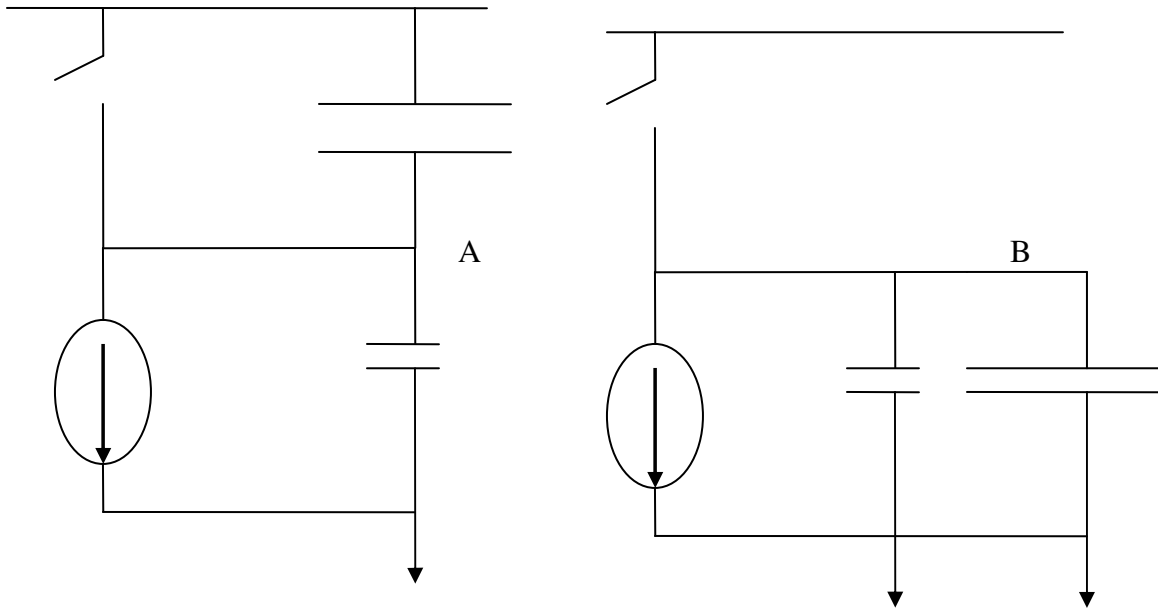
The input is from low-to-high, at time B,



The inverter can be modeled as a current source, let say now the output is connect to A

We have:

Fuding Ge: Job Guide



Point A is initially at V_{dd} and it needs to go to ground. So the cap need long time to charge, compare to case B.


```
ERROR: undefined
OFFENDING COMMAND:

STACK:
```