

October 2005

Buy Sell Exchange & Notice Board

COMMITTEE

PRESIDENT	Malcolm Stewart 36 Mountain View Road TIMARU	686 1282
VICE PRESIDENT	Peter Hunter	688 1463
I. PAST PRESIDENT	Garey Hanifin	688 6663
TREASURER	Peter Hunter	688 1463
SECRETARY	Bill Ridder	03 3081904
CLUB CAPTAIN	Bob Stevens	688 1296
SOCIAL CONVENOR	Bruce Bishop	688 1204
COMMITTEE	Bob Duke	686 2670
	Jim Macdonald	684 7733
	Phil Rooke	686 1812
EDITOR	Jacqui Yarrall jgyarrall@xtra.co.nz	684 3428

Correspondence for the Club to PO Box 1015 Timaru
Fax 03 688-8597 email gaz.sue@xtra.co.nz
Web Site <http://geocities.com/fordzephyr>

Club meetings are held on the first Monday of each month at
the SC RSA Clubrooms, Wai-iti Road, Timaru at 7.45pm



FOR SALE

From the South Canterbury Zephyr & Zodiac Enthusiasts Club

Chrome Number Plate Frames with South Canterbury Zephyr & Zodiac Club	\$25.00
Cloth Badges	\$ 6.00
Lapel Pins	\$ 7.00
2 only Cast Grill Badges	\$45.00
Car Sashes	\$13.50

Orders to Box 1014 Timaru
(Post or courier extra)

Whether it's a full rebuild or a WOF failure, contact us for
new mechanical spares and rubberware for

Consul, Zephyr, Zodiac.

Ask For Your Free Price List

We also carry a growing range of spares for Anglia, Prefect, Consul 315,

Mk 1 Cortina, 8HP and 10HP models right back to 1932

ENFORD SPARES Ltd

PO Box 13-515, Christchurch. Phone 03-3793775,

Fax 0-3-3790936. e-mail graeme@enford.co.nz

Upcoming Events

October 3rd Monday	Meeting S.C.R.S.A
October 7-9	McLeans Island Swapmeet.
October	All British Day Christchurch?
October 16th Sunday	Ashburton for a run with Ashburton V.C.C
November 7th Monday	Meeting S.C.R.S.A
November 27th Sunday	Club Run
November	All Ford Day Christchurch?
December 3rd Saturday	Christmas dinner R.S.A
January 1st	McKenzie Show

Some dates will be subject to change. Members will be notified.



Miss Sabrina



Petrol & Price



Motoring Survival Tips (c.1910)

- Always carry a small tin of oatmeal. Three or four dessertspoonfuls of oatmeal will sustain you for three or four hours.
- Carry a small collapsible cup for the water.
- A small compass, to be had for about 18 pence, will be found very useful when in doubt about your bearings.
- When in doubt about your direction, ask every man who happens along until you are perfectly satisfied you are on the right track.
- Take plenty of spanners and tools. You should have a tool to fit every nut and screw on your machine.
- Take only what is absolutely necessary. A change of stockings, a couple of extra singlets and tennis shoes, a few handkerchiefs and a rain cape are all that is required. The ordinary mackintosh cape is good enough for a shower, but no more. Oilskin will keep you dry all the time in the heaviest rain.
- Never travel without a good supply of money. The power of gold is considerable when you happen to get stranded.
- Don't drink beer; its effect is very deadening to the muscles. Whisky-and-milk is a good reviver, but even whisky is only a whip to the tired horse.
- Keep your lips closed; breathe through your nostrils.

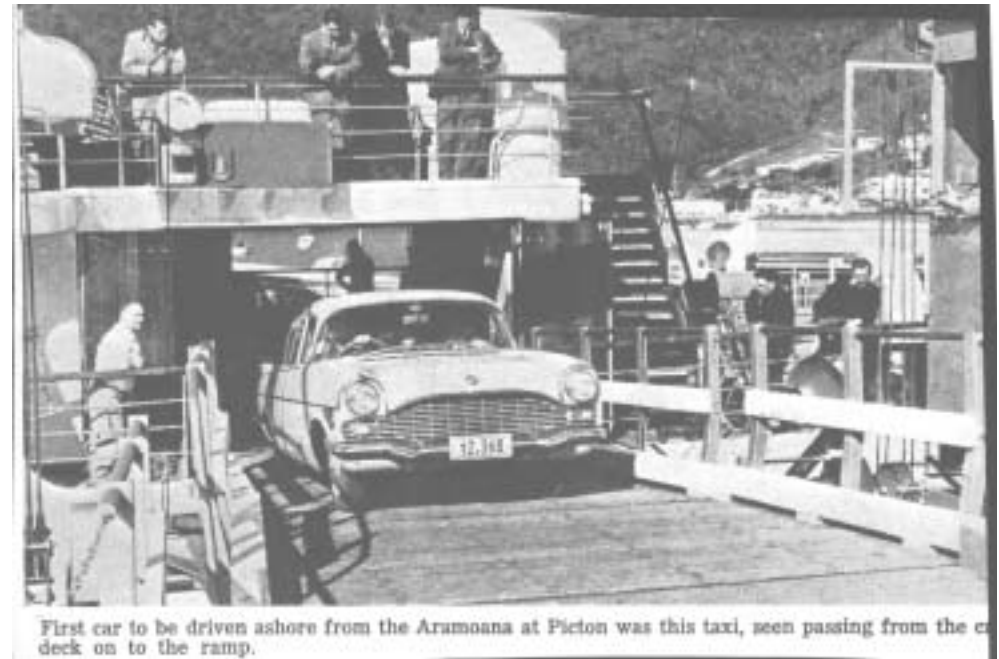
Stopping fast

The two-second rule for following is the bare minimum. At 100km/h the average car, with a good sealed road surface and full emergency braking, will take 58 metres to stop. Rural drivers usually take about two seconds to react. So, if the vehicle 58 metres ahead is abruptly stopped (eg. it collides with something), it will be struck from behind at about the same time as the following driver gets the brakes on! As few of us will ever lock the wheels at 100km/h, or even push the pedal hard enough to activate the ABS, the reality is that we take up to 75 metres to stop.

While the two-second rule is acceptable at urban speeds, for rural roads, five seconds is better.

GENDER TRENDS

- Twice as many males as females are killed or injured on the road but the toll is roughly equal for pedestrians.
- Males will typically engage in riskier driving behaviour than females.
- Almost 10% of men don't wear front seat safety belts, compared to 5% of women.



First car to be driven ashore from the Aramoana at Picton was this taxi, seen passing from the deck on to the ramp.

These are Pictures from the inaugural voyage of the interisland ferry service between Wellington and Picton.



The unloading of 28 cars at Picton took only four minutes. The gangway to the ramp is operated from the cabin near the right.

If interested in this run please cut out, fill in and return this page to Bruce Bishop.



Is it a boat or a caravan?????



**Spring Rally
Sunday October 16th 2005**

We invite you to take part in our Spring Rally starting from the Clubrooms, Maronan Road, Tinwald.

Assembly time - 9.45 am
(for complimentary cup of tea or coffee.)
Briefing - 10.00am.
First car will leave - 10.15am.

44 miles approx to the venue
35 miles return to Ashburton from the venue.

Please bring your own picnic lunch, afternoon tea and hot water.
Also, please remember your name-tag and drivers licence.

This year we will be joined by members of the Zephyr Club, who will take part fully, but not be eligible for our trophies, etc.
Trophies and/or certificates will be awarded to class winners.

Those with trophies from last year's rally are requested to return them prior to the rally, or confirm that they will bring them on the day of the event.

We hope that you will join us for this rally which should be an enjoyable day's motoring and social event.

We are meeting outside Ken Wills

at 8.30 a.m.

Spring Rally 2005

Please fill in and return to: **Bruce Bishop**
Spring Rally **13 Braemar Place**
TIMARU
Phone 688 1204

Entrant's Name:

Address:

Telephone: VCC No:

Drivers Name:

Navigator's Name:

Vehicle Make: Registration No:

Year of Manufacture:

Vehicle Class: Veteran / Vintage / Post Vintage / PWV / Post 60
Commercial / Motorcycle / Car (Circle as appropriate)

Nominated Average Speed: mph for timed section
(Open Road motoring)

Distances: Approx 44 miles to venue
Approx 35 miles return to Ashburton.

Entry Fee: \$2.00 per car (to be paid at the start of the rally.)

Note: Entries Close 8th October