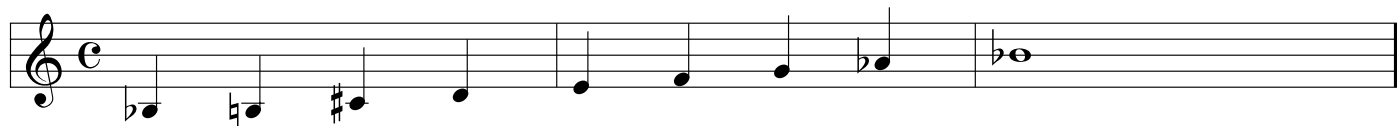


# Triad Exercise #7

A diminished scale is built with two diminished 7th chords (B $\flat$ , C $\sharp$ , E, G & B, D, F, A $\flat$ ). Every root of the diminished 7th chord (ex. B $\flat$ , C $\sharp$ , E, G) contains a major, minor and diminished triad. All remaining notes of the scale (ex. B, D, F, A $\flat$ ) only form a diminished triad/chord. I have used enharmonic spellings to keep the triad/chord integrity.

## B $\flat$ Half-Whole Diminished Scale

by: Farrell Vernon



### Exercise #7.1 = Half-Whole Diminished Scale in Root Movements from the scale

B $\flat$  $\Delta$  B $\flat$ - B $\flat$  $^{\circ}$  B $\flat$ - B $\flat$  $\Delta$  B $^{\circ}7$

C $\sharp$  $\Delta$  C $\sharp$ - C $\sharp$  $^{\circ}$  C $\sharp$ - C $\sharp$  $\Delta$  D $^{\circ}7$

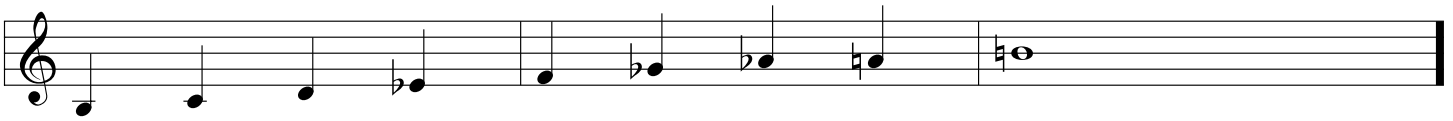
E $\Delta$  E- E $^{\circ}$  E- E $\Delta$  F $^{\circ}7$

G $\Delta$  G- G $^{\circ}$  G- G $\Delta$  A $\flat$  $^{\circ}7$

B $\flat$  $\Delta$  B $\flat$ - B $\flat$  $^{\circ}$  B $\flat$ - B $\flat$  $\Delta$

\*Because there are only 3 diminished scales possible, you only have to learn 3 patterns to cover all 12 keys. You can either start with a 1/2 step or a whole step, but still there are only 3 scales. I have chosen the scales starting with the 1/2 step, because they are used most frequently over V7b9 or V7b13 chords.

**B Half-Whole Diminished Scale**



**Exercise #7.2 = Half-Whole Diminished Scale in Root Movements from the scale**

**C Half-Whole Diminished Scale:**



**Exercise #7.3 = Half-Whole Diminished Scale in Root Movements from the scale**

