



Sue A. Smart & Family
3911 Federal Rd.
Cedarville, OH 45314-9540

937-766-2619 home
937-768-0457 cell

VISIT US AT:
www.geocities.com/fancycolorfarm

E-mail:
fancycolorsnubians@att.net

LEZUX <C> JONES
SZA-DCZ
SZA-DCZ

Welcome to Fancy Colors Nubians

Thank you for your interest in our herd. We began raising dairy goats in 1990 as 4-H projects, but now the children have grown and I can't seem to get the goats out of my bloodstream!

I've been working with goats from several bloodlines to develop my own style of Nubian. I want goats that are strong in general appearance and dairy character, strong feet and legs, with smoothly blended, strongly attached, capacious mammary that are high and wide in the rear and well extended in the fore udder.

Herd health is very important to us. We feed them a 17% dairy ration, with added vitamins and minerals, with an excellent quality alfalfa mixed hay. They are on a regular vaccination and parasite prevention program. All kids are taken from their dams at birth and raised by hand in a separately housed facility from the adults.

Terms and conditions of sale: All prices quoted are subject to change depending on the development and condition of the animal at time of sale. Prices quoted on pre-ordered kids and adults with deposits paid will not change. We require a minimum \$50.00 deposit with the balance to be paid at delivery. With kids this is to be paid within 14 days of the birth of that kid, after that the deposit will be forfeited and the kid will be offered to another buyer. We also reserve the right to retain any animal in the sales list for herd replacement, so if possible, please select a first and second choice. If your choice of kid is not available, your deposit will be refunded and/or a replacement may be offered. There are no refunds on canceled orders. All cost for health certificates or shipping is the buyer's responsibility. On buck kids sold we reserve the option to purchase 20 units of semen for the cost of collection. We do offer a 10% 4-H, youth, multiple purchase, and return buyers discounts as a gesture of our appreciation!

All breeding service and semen sold are by private treaty so please contact us for further information on availability and conditions.

Again, THANK YOU, for your interest in our herd, we look forward to hearing from you soon and wish you every success in your dairy goat endeavors.

Respectfully,



2006 Accomplishments

CH LITTLE SHEPHERD CUPCAKE

2006 was Cupcake's year to shine! She accomplished her final Linear Appraisal Score 6/06 91 EEEE. Which was my last goal for her career, although we're still looking forward to offspring from her for years to come. Cupcake was shown four times in 2006, winning BOB at the SWODGA youth show for my granddaughter Cheyenne's, first "big" win in her show career. Cupcake was 1st Champion Challenger out of 7 at the TN State Fair, also allowing her BOB and Best Udder of Breed. To conclude her year she was BDIS under Dan Laney at the Delaware Co. Show.



Not to be Overlooked in 2006 were:



Willow Run Seraglio Nori received her 2nd leg toward CH and 1st milking leg. We look forward to finishing her in 2007. We are also looking forward to seeing some 2nd generation offspring from her son Fancy Colors Nostalgic Norman.



FANCY COLORS HANNAH MAE BROWN received two milking legs this year. Not milking to her full potential we look forward to freshening her again in 2007 to see her finish in "full bloom".

Fancy Colors Nubians

presents 2005 champions



CH Little-Shepherd Cupcake
LA2005 89 V+VE

NEODGA 6/10/01 -- 46 in show - Judge Patricia Ricotta
(Also BJDIS)
Tri-State DGA 6/19/05 - 41- Judge Stephen Considine
ODGA 6/26/05 - 45 - Judge William W. Pearson Jr.

Jr. Champions included



Fancy Colors Gillianne



*Fancy Colors Silver
Shimmer*



*Willow Run Seraglio
Nori*

Thank you to all of those who have helped our breeding program with their knowledge, genetics, encouragement, support and purchases. We appreciate all of you tremendously, and look forward to making more new acquaintances as we continue throughout this dairy goat journey.

Respectfully,
Sue A. Smart & Family
Cedarville, Ohio
937/766-2619 or 937/768-0457
fancycolorsnubians@att.net
www.geocities.com/fancycolorfarm

2006 Breeding Schedule

<u>Doe</u>	<u>Buck</u>	<u>Kids</u>	<u>Due</u>
Alaia	Norman	\$250.00	2/9/07
Avalon	Norman	\$250.00	2/17/07
Babe	Bear	\$300.00	3/4/07
Cappacino	Norman	\$250.00	2/21/07
Camilla	Norman	\$400.00	3/7/07
F/C Cranberry	DC	\$300.00	2/9/07
Cupcake	DC	\$650.00	2/17/07
Dreamsickle	Brennan	\$500.00	2/12/07
Elantra	Buckwheat	\$200.00	March
LS Ember	Brennan	\$400.00	2/15/07
Gillianna	Odell	\$250.00	1/31/07
Hannah Mae	DC	\$350.00	2/21/07
Hazel Mae	John	\$300.00	3/11/07
Jelly	Gator	\$200.00	2/11/07
Linda Mae	Norman	\$200.00	2/26/07
Mercedes	John	\$300.00	3/8/07
Muffin	Norman	\$200.00	2/8/07
Nicollette	Gator	\$200.00	2/17/07
Nori	Willow Run Enferno (AI)	\$500.00	2/19/07
Sage	Norman	\$500.00	2/18/07
Shimmer	Odell	\$400.00	1/31/07
Shirley Ann	Norman	\$400.00	2/21/07
WR Golden Ember	Kastdemur's Final Justice (AI)	TBA	TBA

Reference Bucks

Reference Bucks

Fancy Colors CC Excelente'



++B Cowdyville's Skinner Man
++B GCH Price O The Field Dutch Man
The Johnson's Dixie
Little Walnut Rasp. Conquest
+B Simple Life Farm Frankberry
CH Little Walnut Rasp. Fancy
Simple Life Farm Raspberry

+B Simple Life Farm Bukvinde
Little Shepherd Sitting Bull
Indian Creek CK Cheyenne
CH Little Shepherd Cupcake
Little Shepherd Jelly Jr.
Little Shepherd Nilda
Little Shepherd Blackberry

"CC" was just an awesome kid. He was undefeated in the show ring. He was junior champion many times and was Reserve Champion Buck in the 2003 District IV Nubian Specialty over his big brother Josiah. We didn't show CC as a yearling or two year old, even though he is such a gentleman, we just didn't put bucks on our show agenda. While candid picture don't always picture your animals in their best pose, they do allow you to observe them in a natural stance. Besides who wants to handle a buck in rut? We wanted you to see that CC carries the beautiful general appearance of his dam, as well as her very correct confirmation, especially in feet and



--+B GCH Simple Life Farm Sweetwoodruff
 -B GCH Simple Life Raspberry Dakota
 Devon Hills Raspberry 1*M
 S: *Simple Life Farm Bubvinkle*
 CH Simple Life Raspberry Dakota
 CH Simple Life Farm Raspberrycupcak
 CH Simple Life Farm Pokey

 --+B Happy Haven Citation Tobias
 Happy Haven Kodiak
 Happy Haven SR Pizazz Carrissa
 D: *Indian Creek CK Cheyenne*
 Indian Creek War Paint
 Indian Creek Classy's Ne Ta Na
 CH Belle Terre RG Classial

Bull is Cupcake's sire. We haven't had a daughter on our farm out of him that doesn't excel in general appearance. They are all strong in milk production as well. Bull is my favorite senior herd sire. As an added bonus he has an extremely gentle personality that seems to continue in his genetics as well.



--+B GCH Hallcienda Frosty Marvin (EX 90)
 --+B GCH Kismet Marvin's Smooth Operator
 Kismet's Hero Nutmeg
 S: +B Kismet Smooth Sensation
 GCH Khimaira Hero's Kismet 2*M
 +B Little Shepherd Jelly Bean
 Simple Life Farm Jelly Jr.
 Devon Hills Raspberry 1*M
 D: CH Little Shepherd Chiquita
 +B Simple Life Farm JB
 CH Little Shepherd Gypsy Rose
 GCH Little Shepherd Blaze Star 2*M

Silver is a very long, wide buck. His strengths are mammary, milk production and breed character. He always throws long beautiful ears. I just haven't had any offspring from Silver that I have been disappointed with. His offspring crossed with the offspring from Little Shepherd Sitting Bull have done very well for me.



--+B GCH Kismet Marvin's Smooth Operator
 Kismet Smooth Sensation
 GCH Khimaira Hero's Kismet 2*M
 Little Shepherd SC Silver
 Simple Life Farm Jelly Jr.
 CH Little Shepherd Chiquita
 CH Little Shepherd Gypsy Rose

 Simple Life Farm Bubvinkle
 Little Shepherd Sitting Bull
 Indian Creek CK Cheyenne
 CH Little Shepherd Cupcake
 Simple Life Farm Jelly Jr.
 Little Shepherd Nikka
 Little Shepherd Blackberry

Joe is the combination of my two sr. herd sires. He certainly has his mother's disposition and strength in general appearance. He's done very well in the show ring. Winning several Jr. Championships, under Karen Senn, Dan Conzidine, and Julie Matthey. He's won his sr. yearling class every time out, and was Reserve Champion Sr. buck in the 2003 District IV Nubian Specialty. He was the 2003 INBA Sr. Yearling All All American Buck and the 2004 SWODGA Futurity winner. We will be showing a few of his offspring this year.



--+B GCH Manna Dick Skinner
 --+B Gowdyville's Skinner Man
 GCH Sparrow's Mary May 2*M
 --+B GCH Price O The Field Dutch Man
 Rickverlin Cameo's Pepperoni
 The Johnson Dixie 1*M
 Foss P. A. Mary Ann AGS #0000002

 Simple Life Farm Grand Finale
 -B Simple Life Farm Frankenberry
 CH Simple Life Raspberry Strudel
 CH Little Walnut Rasp. Fancy
 -B Simple Life Rasp. Rip Snorter
 Simple Life Farm Raspberry
 Simple Life Farm Coretta

Conquest by far wasn't the prettiest buck in our barn, but neither was his sire. Conquest is a very tall, very long bodied, smoothly blended buck, sharp in the withers and very dairy. His sire is responsible for many GCH offspring. He has made the top 15% USDA Sire Summary. Conquest made the 2002 Young Sire Summary.



Standing
At The
Farm
2006

Fancy Colors Lemon Buckwheat



++*B GCH Simple Life Farm Sweet Woodruff 90EVE
*B Simple Life Farm P Revelation
GCH Simple Life Farm Pokey 2*M 86 V++V
*B Willow Run Revelation Brennan 87VVE
*B Simple Life Farm Rasbery Fizz
GCH Willow Run Fizz Brenna 5*M
Zane-Trail Bellary 4*M

4D's Diego Conquista G
4D's Dusty Conquest Buddy Boy
4D's Hidden Chance Delsie
Fancy Colors Lemon Selena
*B Caprea Farmstead LBPC Eventful 88VEV
Caprea Farmstead Coined Phrase
Caprea Farmstead NFH Penni 90EEEV

"Bucky" is really a mirror image of his father. We are hoping with the wonderfully mammeries that we've seen on the dam's side that he will add height and width to rear udders and that wonderful texture that seems to run in his dam's lines. There are also lots of "spots" in his pedigree so if spots and color are important to you this guy should throw it!

Little Shepherd Odell Brown



Little Shepherd Gypsy Rover
Little Shepherd Fudge Ripple
Little Shepherd Cranberry
S: Little Shepherd Berry Patch
Simple Life Farm Shake It All About
Simple Life Farm Corretta
Simple Life Farm Corrienna

++*B C/F Thesus
*B Simple Life JB
GCH Devon Hills Jody 1*M
D: CH Little Shepherd Oda Mae Brown
Simple Life Farm H.B.
GCH Little Shepherd Mellie's Bokai 2*M
Lindisfarme Domino's Melana *M

Odell is the offspring of some of my favorite and first foundation stock, Oda Mae and Corretta, so I'm thrilled to have him on lease this year from Donna Shepherd. He's a flashy buck, but he's also very structurally sound and correct especially in feet and legs. I've heavily used CH Little Shepherd Oda Mae Brown in my herd and I've yet to be disappointed. I'm looking forward to watching Odell's offspring continue this foundation that has worked so well for us. Thank you Donna for sharing him with us this year!

Lamb'z Own Ishmael



Six-M-Galaxy Milani's Hero *B
Full Circle Curly Joe
Full-Circle Flashy One Spot
Wild-Jas Lafayette Texas
Kismet KXC Harry S. Truman +*B
Chevy Acres Phoenix 1*M
Chevy Acres RM Pawnee

Little Shepherd Jelly Bean *B
Simple Life Farm Jelly Jr.
Devon Hills Raspberry 1*M
Little Shepherd Nikka
Little Shepherd Nite Rider
Little Shepherd Blackberry
Little Shepherd ATT Berries

Ishmael was given to us by Donna Shepherd, as she knows how much we've loved Cupcake. Ishmael is Cupcake's half-brother. He's produced some really nice kids for us, very long and level, with excellent feet and legs. We look forward to seeing what they do when they freshen.

4DS GQ Santa Berry



+B Simple Life Farm Raspberry Dakota
 +B Simple Life Farm Bulwinkle
 Simple Life Farm Raspberry cupcake 3*M
 4DS BBJ Berry
 Simple Life Farm Jelly Jr.
 Little Shepherd BJ Raspberry
 Little Shepherd Blackberry

 Simple Life Farm Jelly Jr.
 Little Shepherd Gypsy Rover
 CH Little Shepherd Gypsy Rose
 CH 4DS Gypsy Queen
 Little Shepherd Jelly Bean *B
 4D's Sassy
 Day's Walnut Grove Samantha

Bear was "at work" for the local veterinarian when it was picture taking time, but that's okay as we decided what we love about him most is his dam. We've admired Queen for a long time. We hope that Bear will be able to put his mother's dairy character and mammary on some of his daughters.

*B Willow Run Revelation Brennan



++*B GCH C/F Delaware Brave
 +*B GCH Simple Life Farm Sweetwoodruff
 GCH Devon Hills R. Mulberry 1*M
 S: Simple Life Farm P Revelation
 ++*B C/F Thesus
 GCH Simple Life Farm Pokey 2*M
 Devon Hills Lindsay 1*M

 ++*B GCH Price O The Field Dutch Man
 *B Simple Life Farm Raspberry Fizz
 Simple Life Rasp. Double Dip 2*M
 D: GCH Willow Run Fizz Brenna 5*M
 Zane Trail Breezer's Shawnee
 Zane Trails Bellary 4*M
 Zane Trail XB Berry Berry Nice 3*M

Brennan's pedigree speaks for itself in our herd. We've used a lot of Simple Life genetics in getting the nubians that are most pleasing to my style. Not only does Brennan continue to add to these genetics he's really also quite sociable and flashy with a cute little heart on this right side. Brennan's LA score as a yearling was 87 VVE. He's very strong and correct on his feet and legs with a lot of depth and width throughout. We look forward to freshening his daughter this spring.

Fancy Colors Dear John



***B GCH Simple Life Farm Sweetwoodruff 90 EVE
 *B Simple Life Farm P. Revelation
 GCH Simple Life Farm Pokey 2*M
 *B Willow Run Revelation Brennan 87VVE (yearling score)
 *B Simple Life Farm Rasbery Fizz
 GCH Willow Run Fizz Brenna 5*M
 Zane Trail Bellary 4*M

 ***B Kastdemur's Crown Excess 90EVE
 +*B Kastdemur's EXS Sequoia
 Kastdemur's Crown Salena 9*M 90EVE
 Hayseed's SQ Dear Abby
 ***B GCH Kastdemur's MPR Liaison 91EEEE
 Lynnhaven L. Perfect Passion 88VEVV
 GCH Lynnhaven E. Paradise 7*M 92EEEE\ 2002 National Grand Champion

WOW look at DJ's pedigree -- need we say more!

*B Hoanbu Status Gator



SG***B Kastdemur's LH Full Service EX91EEEE
 SG +*B Kastdemur's At Your Servc VG90VEE
 Kastdemur's CPE No Explanation
 +*B Lakeshore-Farms Star Status 3-03EX90VEE
 Lakeshore-Farms EX Turbocharge
 GCH Lakeshore-Farms Skipa Star 3*M VG89VVEE
 GCH Lakeshore-Farms EX Antique Lace 2*M EX90VEEE

 *B Kismet Smooth Sinsation VG88
 Little Shepherd SC Silver
 CH Little Shepherd Chiquita
 GCH Hoanbu Silver Gemi Genovesse 4*M VG89 EEEV
 +B Hoanbu Cruzan Gold
 GCH Hoanbu Gold Lea Geminia 3*M EX91VEEE
 GCH Hoanbu Tamoon Charm Galilea 2*M VG88

Gator is our 2005 Buckeye Sale purchase, or should I say steal! He's just an awesome buck kid, and yes folks he's an American, something we are not ashamed of at Fancy Colors. We have big expectations for his offspring. Gator appraised at 4 months old with all V's and an Ec in head, rear legs and back and V (very good) in shoulder assembly. His overall rating was a "V". Gator was shown three times in 2005 by Holly, where he was 3x1's, 1x Junior Champion and 1x Reserve Junior Champion. We can't wait to use him, show him and have him appraised again as an older buck! Thanks Holly for sharing this fine buck with us.

Quarter Mile's Dealer's Choice



++*B Kastdemur's LH Full Service 91 EEE
 ++*B SG Kastdemur's At Your Service 90VEV
 Kastdemur's CPE No Explanation 4*M
 *B Lakeshore Ace Roulette
 *B Lakeshore Farm's Just Dandy
 GCH Lakeshore Farms Dandy Tangaroo 4*M 91EEEE
 GCH Lakeshore Farm's Just Tangy 3*M 90VVEE

 *B Kismet High Stakes
 Frye's High Lighter
 Frye's Cotten Candy
 CH Quarter Mile Farm Mocha Splash 89VVEE
 Hawkwind's My Mack
 Quarter Mile My Independence
 Hawkwind's KHS Savanna

DC's mother, Mocha (picture above) caught our eye in 2005, in 2006 she was even more awesome, so we couldn't miss out on adding this fine son to our breeding program. With is dam's outstanding qualities and his sire's outstanding pedigree, we just feel we can't go wrong with DC. Look for a few of his offspring in our herd in 2007!



Fancy Colors Nostaglic Norman



++*B GCH Simple Life Farm Sweet Woodruff 90EVE
 *B Simple Life Farm P Revelation
 GCH Simple Life Farm Pokey 2*M 86 V++V
 *B Willow Run Revelation Brennan 87VVE
 *B Simple Life Farm Rasbery Fizz
 GCH Willow Run Fizz Brenna 5*M
 Zane-Trail Bellary 4*M

 *B Kastdemur's Aseop
 *B Willow Run Aseop Seraglio
 SGCH Willow Run Liam Sehaptin 1*M 91EEEE
 2x Res. National Champion
 Willow Run Seraglio Nori 89VEVV (2 legs)
 SG +*B Willow Run Playboy
 Willow Run Playboy Novia 3*M
 Willow Run Nala 2*M

Norman has been such a delight to have on the farm. He's been sold to Deb McCall, but we've had the pleasure of using him this fall on a few of our younger does. We are looking for some outstanding daughter's from him. His dam has an exceptional udder, so we look for her to easily finish her CH as a 3 year old. We've AIed her to Willow Run AT Enferno so we're hoping to add Norman's 1/2 to our herd in 2007. We wish Deb tons of beautiful kids out of Norman, but we surely will miss him on our farm.

Fancy Colors Ladies

CH Little Shepherd Cupcake



"Cupcake" was shown once as a kid and earned her 1st leg as a junior champion where she was also best BJDIS. In 2002 she was shown 8 times going 1xBOB, 8x 1st, and was 1st place 2yr old in the 2002 District IV Nubian Specialty. In 2003 she was 1st place 3yr. old in the District IV Nubian Specialty in Illinois over 17 very nice does in her class. 2005 District IV Nubian Specialty she was Reserve Champion under Steven Considine. She's was shown 8 times during 2005 going 4xBOB, 4x's Grand and 3xRCH. 2006 she was shown 4 times, going BOB 3x's, and 1xBDIS. She is strong in all areas, although she excels in general appearance. She enjoys extremely good health, which pays off in the milk bucket as she is one of our most productive does.

When I studied Cupcake's pedigree, besides the number of GCH and CH's in it I was most pleased with the number of times Devon Hills Raspberry appeared. Raspberry is known for her udder strength believed to have been produced as a double daughter of +*B Gowdyville's Raspberry Request who was a son of Gasconade Advancer and GCH Jarl's Con Raspberry who was 1st place udder at 1979 National show.

Cupcake also carries some Price of the Field in her pedigree, which I felt made her a good candidate to outcross with Little Walnut Rasp. Conquest, who is a Price of the Field Dutchman son, thus we have CC. Cupcake also goes back to Sanger NFT Frosty Pepper who is 4x's Frosty Marvin and Truffle who was out of a Marvin son.

+*B GCH S.L.F Sweetwoodruff (90EVE)
CH Simple Life Farm Raspberry Dakota
Devon Hills Raspberry 1*M
Simple Life Farm Bulwinde
-B GCH Simple Life Farm Raspberry Dakota
CH Simple Life Farm Cupcake
GCH Simple Life Farm Poley

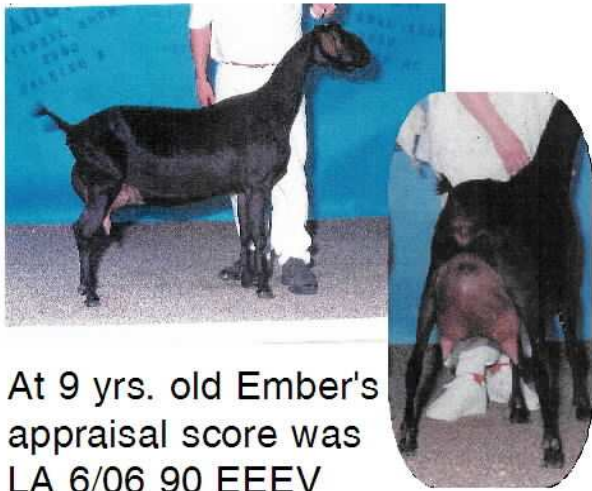
S: Little Shepherd Sitting Bull
-+B Happy Haven Citation Tobias
Happy Haven Kodiak
Happy Haven SR Pizazz Carrizza
Indian Creek CK Cheyenne
Indian Creek War Paint
Indian Creek Classy's Ne Ta Na
CH Belle Terre RC Classikal

+*B C/F Delaware Brave
Little Shepherd Jelly Bean
GCH Little Shepherd Mellie's Bokai 2*M
Simple Life Farm Jelly Jr.
-+B Gowdyville's Raspberry Request
Devon Hills Raspberry 1*M
Devon Hills R. Minuit

D: Little Shepherd Nikka (full sister to Cranberry)
-+B C/F Delaware Brave
Simple Life Farm Red Man
Price of the Field Silverbelle
Little Shepherd Nite Rider
Simple Life Farm H.B.
GCH Little Shepherd Mellie's Bokai 2*M
Lindisfarme Dominos Melana

Little Shepherd Blackberry
Muirhill Portias Sampson
Simple Life Farm Rasp. Dum Dum
Devon Hills Raspberry
Little Shepherd ATT Berries
Sanger NFT Frosty Pepper
Little Shepherd Becky-Too
Simple Life Farm Truffle

GCH Willow Run Golden Ember



At 9 yrs. old Ember's appraisal score was LA 6/06 90 EEEV

ss: GCH ++*B Willow Run Triton
 Sire: *B Willow Run Golden Boy
 sd: GCH Soncare Gabriel 3*M
 4x's National Champion
 ds: Willow Run Denver
 Dam: Willow Run 95 Elusive
 dd: Willow Run Enigma 2*M

1998 ADGA National Show 1st place Jr. Yearling, Jr. Champion
 1999 Royal Winter Fair 1st place 2yr. Grand Champion
 2000 ADGA National Show - 2nd place 2yr old milker
 2000 Royal Winter Fair 1st place 3yr old Grand Champion
 2003 Dam of the ADGA National Champion
 2004 Dam of the ADGA National Champion

Ember is very dairy, open ribbed and correct in general appearance with a very nicely attached mammary. We are looking forward to getting her AI-ed back *B Kastdemur's Accidental Tourist or Kastdemur's Final Justice for a hopeful repeat of GCH Willow Run AT Erazel and Willow Run AT Enferno.

Little Shepherd Ember



LA 6/06 86 VEV+

*B Kismet Smooth Sinsation
 (full brother to GCH Kismet Smooth Kristin 3*M '98
 Nat'l Champion)
 Little Shepherd SC Silver
 CH Little Shepherd Chiquita
 Little Shepherd Possum Brown
 * B Simple Life Farm JB
 CH Little Shepherd Oda Mae Brown
 GCH Little Shepherd Mellie's Bokai 2*M
 ++*B Faith Farm P Aries
 Faith Farm's AG Genesis
 GCH Faith Farm CSJ Galetia 2*M
 Little Shepherd War Paint
 Happy Haven Kodiak
 Indian Creek CK Cheyenne
 Indian Creek Classy's Ne Ta Na
 Crystal Rock Silver Ash
 Little Shepherd Gypsy Rover
 Crystal Rock Patience
 Eden Acres Susanna

Ember has been an awesome milker for us. She's a powerful doe, very structurally correct, strong in general appearance, with a well attached capacious mammary. Her udder has excellent texture and she is just a dream to milk. She's produced some very lovely daughters for us, especially Little Shepherd Mercedes. Ember and Mercedes have stood undefeated in group dam/daughter classes for us in 2006. We look forward to more promising offspring from Ember in the future.



Fancy Colors Hannah Mae Brown

LA 6/06 V+E+ 86



CH Simple Life Farm Raspberry Dakota
 Simple Life Farm Bulwinkle
 Simple Life Raspberry cupcak
 S: Little Shepherd Sitting Bull
 Happy Haven Kodiak
 Indian Creek CK Cheyenne
 Indian Creek Classy's Ne Ta Na
 Little Shepherd Gypsy Rover
 Little Shepherd Fudge Ripple
 Little Shepherd Cranberry
 D: Little Shepherd R Oda J
 Simple Life JB *B
 CH Little Shepherd Oda Mae Brown
 GCH Little Shepherd Melle's Bokai 2*M

Hannah Mae has been a wonderful doe for my granddaughter whose been showing her since she was a doeling. Hannah's now 4 and Shiney's barely grown enough to keep up with her. Hannah's great not to take advantage of her though. Hannah's been shown 6 times this year, and has been 6 times 1st, and 2 times BOB. Hopefully she can get that last leg before the year is over. We'd like to see Hannah freshen with more than a single kid to increase her milk production slightly, but otherwise we are very pleased with her.

Willow Run Valmont Dreamsickle



*B Kastdemur's Accidental Tourist
 Willow Run AT Inferno ++B
 GCH Willow Run Golden Ember 1*M
 *B Willow Run Inferno Valmont
 ++B Willow Run Golden Boy
 GCH Willow Run Golden Vanilla 2*M
 Willow Run Vanity 1*M
 GCH ++B Willow Run Triton
 S: Willow Run Golden Boy ++B
 GCH Sonacare Gabriel 3*M
 Willow Run Golden Boy Therese
 D: Willow Run Wicked Teomira 1*M

Dream is a huge doe who came to us late in the fall milking fairly well, but we did not get her settled for 2004 breeding season. 2005 she settled and then aborted quads at 3 months. We look forward to freshening her and showing her in 2007. Anyone whose meet Dream knows why this picture was worthy of our herdbook. While she is a very loving doe, she's not really keen of the social scene. So for her to choose to lay down among company without being restrained in some way is almost unbelievable!

Little Shepherd Mercedes



LA 6/06 VVVV 87

+B Simple Life Farm Bulwinkle

Simple Life Lucke Buc

CH Simple Life Rasp. Strudel

S: 4DS Roy Boy

Little Shepherd Gypsy Rover

CH 4DS Gypsy Queen

4DS Sassy

Little Shepherd SC Silver

Little Shepherd Possum Brown

CH Little Shepherd Oda Mae Brown

Little Shepherd Ember

Little Shepherd War Paint

Crystal Rock Silver Ash

Crystal Rock Patience

Mercedes puts together some of my favorite goats. Mercedes has been an awesome milker like her mother, as well as a great addition to our show string. While she's slightly smaller than some of her competition she has certainly held her own in the show ring. She was the SWODGA 2005 futurity champion, and 2006 she's shown 8 times with 6x1st and 2x's2nd. Mercedes and her mother have also done very well in Dam and Daughter classes over the last two years always placing first.

LITTLE SHEPHERD BABE BROWN



*B Simple Life Farm Bullwinkle

Simple Life Farm Lucke Buc

CH Simple Life Rasp Strudel

S: 4D's Roy Boy

Little Shepherd Gypsy Rover

CH 4D's Gypsy Queen

4D's Sassy

Little Shepherd Berry Patch

Little Shepherd Possum Brown

CH Little Shepherd Oda Mae Brown

D: Little Shepherd Pogo Brown

Little Shepherd Nite Rider

Little Shepherd Blackberry

Little Shepherd ATT Berries

Babe is a new addition to our herd this year, and I feel lucky to have her. She's a "BROWN" and in our herd that means she's just part of our winning foundation stock. You'll see a lot of CH Little Shepherd Oda Mae Brown in our lines, and we've never been disappointed in any of them! We've only had Babe for a short while, but she has been to one show with us. She's not quite used to the show ring distractions and travel, but she did quite well there placing 3rd in her large class. Babe is a very productive doe and is the heaviest milker in our barn at present.

Fancy Colors Silver Shimmer



GCH ++*B Kismet's Marvin's Smooth Operator
 *B Kismet Smooth Sinsation
 GCH Khimara Hero's Kismet 2*M
 Little Shepherd SC Silver
 Simple Life Farm Jelly Jr.
 CH Little Shepherd Chiquita
 CH Little Shepherd Gypsy Rose

Simple Life Farm Jelly Jr.
 Just Our Luck Cody
 CH Twin Valley Legend of Chelsey
 Just Our Luck Kaija
 Simple Life Farm JB *B
 CH Little Shepherd Oda Mae Brown
 GCH Little Shepherd Mellie's Bokai 2*M

LA 6/06 V+E+ B4

Shimmer jumped into the show ring with a bang winning Grand Champion and BOB 2 times and Res. Champion two times behind her herd mate Nori as a yearling, so she was retired early as a jr. doe. In 2006 she won the SWODGA Nubian Futurity. Having a single kid, as a two year old first freshener she didn't milk to her potential so we pulled her off the show string after the futurity and dried her early this fall to breed her. I was not at all disappointed in her LA scores because she was a little heavy and we were drying her up when she was appraised. I look forward to appraising her again in the future for a more accurate reflection of her attributes. Shimmer being the only daughter I own out of Kaija she'll be with us forever and we look forward to big things in her future. We are going to line breed her this year back to Little Shepherd Odell Brown.

Fancy Colors Gillianne



Gowdyville's Skinner Man ++*B
 GCH Price OThe Field Dutchman ++*B
 The Johnson's Dixie 1*M
 Little Walnut Rasp Conquest
 Simple Life Farm Frankensberry *B
 CH Little Walnut Rasp. Fancy
 Simple Life Farm Raspberry

Simple Life Rasp. Flick
 Little Walnut Rasp Millinium
 CH Little Walnut Rasp Fancy
 Fancy Colors Elize Mae Brown
 Little Shepherd Fudge Ripple
 Little Shepherd R Oda J
 CH Little Shepherd Oda Mae Brown

LA 6/06 VVV+ B4

Gilly also got off to a bang in the show ring, finishing RCH behind Shimmer 1st time out and winning her jr. leg 2nd time out. While it's no fun leaving a nice doe home we thought it better to retire her for 2005 and give some other does a chance to earn a jr. leg. Gilly is very growthy doe, correct on feet and leg and has a beautiful topline. Gilly is another doe we probably should have bred as a kid. After a 2nd place in the '06 SWODGA Nubian Futurity, we also pulled Gilly from the showstring to breed early, so again we were not disappointed in her Linear Appraisal score for this reason. She is also being linebred to Little Shepherd Odell Brown for 2007.

Fancy Colors Cranberry's Image



Simple Life Raspberry Dakota
Simple Life FarmBullwinkle
Simple Life Farm Rasberycupcak
S: Little Shepherd Sitting Bull
Happy Haven Kodiak
Indian Creek CK Cheyenne
Indian Creek Classy's Ne Ta Na

Simple Life Raspberry Dakota
Simple Life Farm Bullwinkle
Simple Life Farm Rasberycupcak
D: 4D's McKenzie
Little Shepherd Nite Rider
Little Shepherd Blackberry
Little Shepherd ATT Berries

Cranberry was so much fun to show as a yearling. She's got an ideal udder, although she freshened at only 10 months of age (her choice not ours), so we expect much better production from her next freshening. She did well in the show ring for such a young doe, capturing several first places. We look forward to having her as a productive part of our herd for a long time. Cranberry however has a mind of her own when it comes to breeding and somehow we overlooked getting her bred as a 2 yr. old. She's being bred for 2007 to Quarter Mile's Dealer's Choice.

Little Shepherd Sage



SG *B Willow Run Inferno Valmont
Willow Run Valmont Gunnar
CH Show-Down Southern Grace
*B Kastdemur's Aseop
CH Foxwood Faye Lee Meadow
Foxwood Champ's Mirada

Sage is really something very correct with a beautifully attached mammary. We have great expectations for her, hoping she follows closely in her dam's hoofprints. Meadow was the 2nd place 3yr. old at the 2006 National's. We took this picture just after milking on a beautiful but very chilly October day so that it could be included in our herdbook for 2006 NAILE and the 2006 ODGA Buckeye Sale and Fall Conference, so apologize that you can't "see" her in milk.

Willow Run Seraglio Nori



Kastdemur's Aesop *B

S: Willow Run Aesop Seraglio *B

GCH Willow Run Liam Sehaptin

GCH ++*B Willow Run Triton

Willow Run Playboy +B

GCH Happy Haven Faith's Pizazz 4*M

D: Willow Run Playboy Novia 3*M

Willow Run D. Dominique

Willow Run Nala 2*M

Willow Run Nastassua 1*M

LA 6/06 VE VV 89

Nori has been an outstanding addition to our herd. She jumped into the show ring early as a jr. yearling and won her class everytime. She finished BOB 2x's and RCH 2x's and was retired from the ring to give other does a chance for a jr. leg. Since her 1/2 sister CH Willow Run Nolani, burned up the show ring as a two year old milker we felt Nori would do well as a milker. She spent most of the year battling with Nolani's daughter Nomiki, so now both does have two legs towards permanent championship. Hopefully they can both get finished as three year olds. We are excited to announce that Nori was AId to Willow Run AT Enferno this fall.

FANCY COLORS HAZEL MAE BROWN



Kisment Smooth Sinsation *B

Little Shepherd SC Silver

CH Little Shepherd Chiquita

S: Fancy Colors Josiah Earl

Little Shepherd Sitting Bull

CH Little Shepherd Cupcake

Little Shepherd Nikka

Simple Life Farm Bullwinkle

Little Shepherd Sitting Bull

Indian Creek Classy's Ne Ta Na

D: Fancy Colors Hannah Mae Brown

Little Shepherd Fudge Ripple

Little Shepherd R Oda J

GCH Little Shepherd Oda Mae Brown

Hazel's done quite well for herself in the show ring.. As a kid she was always 1st or 2nd in her class but couldn't compete against the dry yearlings for that leg. She's a carbon copy of her mother so I expect that the older she gets the better she'll do. Maybe that's why my granddaughter's chosen her as her new showmanship goat.

Hazel linear appraised at 5 months of age was all V's and an Ec for rump, with an overall score of V.

Fancy Colors Berry Avalon



Simple Life Farm Bullwinkle
4D's BBJ Berry
Little Shepherd BJ Raspberry
S: 4D's GQ Santa Berry
Little Shepherd Gypsy Rover
CH 4DS Gypsy Queen
4DS Sassy

Simple Life Farm Lucke Buc
4D's Roy Boy
CH 4D's Gypsy Queen
Little Shepherd Mercedes
Little Shepherd Possum Brown
Little Shepherd Ember
Crystal Rock Silver Ash

Avalon should be a wonderful milking addition to our herd as all of her ancestors are excellent milkers with wonderfully attached mammaries. We didn't show many kids when Avalon was young we focussed on dry legs for yearlings. We showed Avalon once as a yearling to get her out and get her some experience in the showing. She placed 3rd in a class of 27 yearlings, so we were very pleased with her one time outing. We definitely look forward to updating her page with future accomplishments and can't wait to show her as a milker.

Fancy Colors CC Nicollette



++*B GCH Price of the Field Dutchman
Little Walnut Rasp Conquest
CH Little Walnut Rasp. Fancy
S: Fancy Colors CC Excellente
Little Shepherd Sitting Bull
CH Little Shepherd Cupcake
Little Shepherd Nikka
Simple Life Farm Bullwinkle
Little Shepherd Sitting Bull
Indian Creek Cheyenne
D: Fancy Colors Raisen Regnique
Little Shepherd SC Silver
Fancy Colors Rhode Island Rene
Little Shepherd Raisen

LA 6/06 ++AV 83

Nicollette's dam, Nika was one of my favorites. She just had a lot of "pizzaz". Nika also did very well in our barn standing just behind Rosie in the show ring every time out. When we did a herd reduction this past year, Nika got the opportunity to move to a very nice 4-H home so she was sold. "Nic" freshened with an even nicer mammary than her mother although we didn't take her out as a yearling, and showed her herdmate Hazel instead, for dam/daughter classes. We look forward to taking Nic out more as a two year old.

Fancy Colors Sensational Alaia



++*B GCH Price of the Field Dutchman
Little Walnut Rasp. Conquest
CH Little Walnut Rasp. Fancy
Fancy Colors Royal Sensation
Price of the Field Dutch Kyle
Wana Acres DK Angel's Ruth
Wana Acres S.S. May's Angel

Simple Life Farm White Ears
Sheep Run Levi
Sheep Run Sally
4D's Queen Gypsy Rosalita
Little Shepherd Gypsy Rover
CH 4D's Gypsy Queen
4D's Sassy

We look forward to Alaia having a very nicely attached mammary as both her maternal and paternal grandparents have proven. She's a very delightful doe in personality as well. We didn't show Alaia as a kid, again we focussed on dry legs for yearlings. We did show her 2 times as a jr. yearling and both times she was 1st in her class, although she did not earn her leg against the senior yearlings. We look forward to freshening her this year.

Fancy Colors Rosie Evalina



++*B GCH Price of the Field Dutchman
Little Walnut Rasp. Conquest
CH Little Walnut Rasp. Fancy
Fancy Colors Royal Sensation
Price of the Field Dutch Kyle
Wana Acres DK Angel's Ruth
Wana Acres S.S. May's Angel

Simple Life Farm White Ears
Sheep Run Levi
Sheep Run Sally
4D's Queen Gypsy Rosalita
Little Shepherd Gypsy Rover
CH 4D's Gypsy Queen
4D's Sassy

Evalina is the picture of her mother, personality and all, except that she has solid brown ears, maybe that will help cure the curiosity that runs in her blood! We have wonderful expectations for her in the show ring as well as in the milk bucket. We chose not to show Evalina as a yearling because we felt she wouldn't be competitive against her herdmate Hazel, but we are looking forward to taking her out in '07 as a two year old, and in some produce of dam classes with her sister.

Fancy Colors PB Jelly



Full Circle Curly Joe
Wild-Jas Lafayette Texas
Chevy Acres Phoenix 1*M
Lamb'z Own Ishmael
Simple Life Farm Jelly Jr.
Little Shepherd Nika
Little Shepherd Blackberry

Kismet Smooth Sinsation
Little Shepherd SC Silver
CH Little Shepherd Chiquita
Little Shepherd Jambalaya
Little Shepherd Blackberry Jam
Little Shepherd Black Rasp Jam
Little Shepherd BJ Beauty

Jelly is a "flashy" kid, very correct on feet and legs with a very level topline. We look forward to having her as an addition to our herd.

Little Shepherd Blueberry Muffin



Full Circle Curly Joe
Wild-Jas Lafayette Texas
Chevy Acres Phoenix 1*M
Lamb'z Own Ishmael
Simple Life Farm Jelly Jr.
Little Shepherd Nika
Little Shepherd Blackberry

Simple Life Lucke Buck
4D's Roy Boy
CH 4D's Gypsy Queen
Little Shepherd Blueberry Jam
Little Shepherd SC Silver
Little Shepherd Jamboree
Little Shepherd Black Rasp Jam

Muffin was the last kid born on our farm in 2005, so she's had to be a little firecracker. She's also very sweet and affectionate. Hopefully she will have the very nicely shaped and attached mammary of her maternal lines. We are offering her **FOR SALE.**

Fancy Colors Cappacino Shimmer



I'm not going to spend much time giving you my thoughts on "Cappy". She's just like Cupcake was as a kid, and she's got lots of my favorite goats mixed into one. In the show ring she's been show 8 times, 7 times 1st, 1 x 2nd, and 2 times RCH. Watch for her in the future!

++*B Gow dyville's Skinner Man
 ++*B GCH Price of the Field Dutchman
 The Johnson's Dixie
 Little Walnut Rasp Conquest
 +B Simple Life Farm Frankenberry
 CH Little Walnut Rasp Fancy
 Simple Life Farm Raspberry
 Fancy Colors CC Excelente
 *B Simple Life Farm Bullwinkle
 Little Shepherd Sitting Bull
 Indian CK Cheyenne
 CH Little Shepherd Cupcake
 Little Shepherd Jelly Jr.
 Little Shepherd Nikka
 Little Shepherd Blackberry

 GCH ++*B Kismet's Marvin's Smooth Operator
 *B Kismet Smooth Sinsation
 GCH Khimara Hero's Kismet 2*M
 Little Shepherd SC Silver
 Simple Life Farm Jelly Jr.
 CH Little Shepherd Chiquita
 CH Little Shepherd Gypsy Rose
 Fancy Colors Silver Shimmer
 Simple Life Farm Jelly Jr.
 Just Our Luck Cody
 CH Twin Valley Legend of Chelsey
 Just Our Luck Kaija
 Simple Life Farm JB *B
 CH Little Shepherd Oda Mae Brown
 GCH Little Shepherd Mellie's Bokai 2*M

LA 6/06 VECV

Fancy Colors Linda Mae



Full Circle Curly Joe
 Wild-Jas Lafayette Texas
 Chevy Acres Phoenix 1*M
 Lamb'z Own Ishmael
 Simple Life Farm Jelly Jr.
 Little Shepherd Nika
 Little Shepherd Blackberry

 Simple Life Rasp. Flick
 Little Walnut Rasp Millinium
 CH Little Walnut Rasp Fancy
 Fancy Colors Elize Mae Brown
 Little Shepherd Fudge Ripple
 Little Shepherd R Oda J
 CH Little Shepherd Oda Mae Brown

Linda Mae has been a lot of fun to have around this year, as you never knew what new antic she was going to pull. Linda has a lot of dairy character and we look forward to her holding her own in the show ring. She consistently placed in the top 5 this year battling with her four herd mates all year for the blue. It will be amazing to see which one of these kids finishes their championship first. I think Linda Mae will mix the order up a little when she freshens. Stay tuned. She is breed to Fancy Colors Nostalgic Norman for 2007 kidding.

Fancy Colors Shirley Ann



LA 6/06 EcEcEc

Ruth is our 2002 Buckeye Sale purchase, and she's definitely repaid us for her investment. She's given us some beautiful offspring. Not to overlook Shirley's paternal contributions. Of course, her LA score speaks volume's for this doeling. She is linebreed to Fancy Colors Nostalgic Norman and you know we just can't wait for those kid's to hit the ground! Shirley's been shown 8 times this year placing 1st or 2nd each time shown, battling with her herdmate Fancy Colors Shimmer Cappacino for the blue. We look forward to Shirley getting her CH early in her show career and providing us with lots of wonderful offspring to carry on these lines.

Brown Sugar's Trademark
 H. Homestead Mark of Prestige
 H. Homestead Sun Tiara
 GCH ++*B Kastdemur's MPR Liasion
 Ker-A-Tin Acres Royal Majesty
 Kastdemur's Royal Romance
 Kastdemur's Apache Feather
 Tom-De-Jon Acres No e Lariat
 Kastdemur's Accidental Tourist
 Willow Run AT Enferno
 Willow Run Golden Ember
 CH Willow Run Nolani
 Willow Run Playboy
 Willow Run Playboy Novia
 Willow Run Nala

++*B Gowdyville's Skinner Man
 ++*B GCH Price O The Field Dutch Man
 The Johnson's Dixie
 S: Price O The Field Dutch Kyle
 CH Price O The Field Monarch
 Price O The Field Kaylee
 Bosque Valley Kansas Callie
 Wana Acres DK Angel's Ruth
 *B Kismet Kassanova
 *B Sunshine Sandric Simian
 Sunshine Talent Sandic 1*M
 D: Wana Acres S. S. May's Angel
 *B Parrish Prize'n Guy Posh
 CH Wana Acres Posh's May
 Sunshine OGRE Wana April

Fancy Colors Camilla Nicole



LA 6/06 VW

Camilla is our 2006 ODGA Buckeye Sale consignment. In my very humble opinion, (while she didn't LA as high as her sister, her score is certainly nothing to be ashamed of) she will have the better mammary of the two does. We'll have to wait until March of 2007 to see though, as she and her sister are both linebreed to Fancy Colors Nostalgic Norman. We are going to miss her greatly when she leaves the farm to go to her new home but we'll be keeping our eye on her in the future. Please see her sale brochure or contact us if you are interested in adding her to your herd.

Brown Sugar's Trademark
 H. Homestead Mark of Prestige
 H. Homestead Sun Tiara
 GCH ++*B Kastdemur's MPR Liasion
 Ker-A-Tin Acres Royal Majesty
 Kastdemur's Royal Romance
 Kastdemur's Apache Feather
 Tom-De-Jon Acres No e Lariat
 Kastdemur's Accidental Tourist
 Willow Run AT Enferno
 Willow Run Golden Ember
 CH Willow Run Nolani
 Willow Run Playboy
 Willow Run Playboy Novia
 Willow Run Nala

++*B Gowdyville's Skinner Man
 ++*B GCH Price O The Field Dutch Man
 The Johnson's Dixie
 S: Price O The Field Dutch Kyle
 CH Price O The Field Monarch
 Price O The Field Kaylee
 Bosque Valley Kansas Callie
 Wana Acres DK Angel's Ruth
 *B Kismet Kassanova
 *B Sunshine Sandric Simian
 Sunshine Talent Sandic 1*M
 D: Wana Acres S. S. May's Angel
 *B Parrish Prize'n Guy Posh
 CH Wana Acres Posh's May
 Sunshine OGRE Wana April

Little Shepherd FG Agate



GCH +B Mystery Creek Jedi
 ++*B Amberwood Jedi's Winter Frost
 Jibarski Bo's Secret Whisper 2*M
 Prairie Patch Copper Frost
 Prairie Patch Matlock
 SG Prairie Patch Copperberry
 Prairie Patch Copper Mist

*B Copper Hill Ramesus

Copper Hill Golden Grace
 Copper Hill Papa Bear
 SG Copper Hill P B Champagne Gold

Aggie's had a bit of a rough time establishing herself in our kid group this summer, but she's finally found her way and quickly beginning to catch up with the others. She's a bit shy, but we're not going to fault her for that, she's very correct on her feet and legs, and shows wonderful dairy character. We are so excited about watching her future, as we've literally drooled over her maternal grandam "Goldie". Keep your eye on this little girl in the future!

Fancy Colors Ann Landers



++*B GCH Simple Life Farm Sweetwoodruff 90 EVE
 *B Simple Life Farm P. Revelation
 GCH Simple Life Farm Pokey 2*M
 *B Willow Run Revelation Brennan 87VVE (yearling score)
 *B Simple Life Farm Rasbery Fizz
 GCH Willow Run Fizz Brenna 5*M
 Zane Trail Bellary 4*M

++*B Brown Sugar Crown Ambassador
 +*B Kastdemur's Crown Excess FS90
 Kastdemur's Extasy 2*M
 S: *B Kastdemur's EXS Sequoia
 ++*B Brown Sugar Crown Ambassador
 Kastdemur's Crown Salena 9*M
 Kastdemur's LS Sonoma 8*M

Hayseed's SQ Dear Abby
 ++*B GCH H. Homestead Mark of Prestige
 ++*B GCH Kastdemur's MPR Liason
 GCH Kastdemur's Royal Romance 2*M
 D: Lynnhaven L. Perfect Passion
 +*B Kastdemur's Crown Explorer
 GCH Lynnhaven E. Paradise 7*M 2002 ADGA National CH
 GCH Cihanek Farms Unxpcd Pleasur 6*M

Paradise,
 Landy's
 maternal great
 granddam



I've been admiring the Crown Ambassador offspring and GCH Lynnhaven E. Paradise for a long time, so needless to say I'm excited about Landy's future in our herd. She's shown very well as a jr. kid shown 6 times and placing 5 x's 1st and 1x2nd. We think she'll have a very bright future as a dairy doe and as part of our show string. WE wish Nicole Peabody a very bright future with Landy's full sister Fancy Colors Annasophia!

Little Shepherd Diamond Dots



GCH +B Mystery Creek Jedi
 ++*B Amberwood Jedi's Winter Frost
 Jibarski Bo's Secret Whisper 2*M
 Prarie Patch Copper Frost
 Prarie Patch Matlock
 SG Prarie Patch Copperberry
 Prarie Patch Copper Mist

 *B Six-M-Galaxy Milani's Hero
 Full Circle Curly Joe
 Full Circle Flashy One Spot
 Crystal Rock Draven

 Crystal Rock Constance

Dots has just been and interesting edition to our herd. She came to us with "buckle jaw paralysis"-- meaning she couldn't empty her cud. We had to do this for her several times a day (not a pleasant job), and we were given a poor prognosis for her future. We felt strongly enough about her however that we weren't willing to settle for less than she deserved as long as she seemed happy! Which you'd have to know her to understand that she believes she's a special princess! To make a long story short, Dots has fully recovered from whatever mystery caused her paralysis and she's a very healthy "fat and sassy" princess now, with a very bright future! You'll be seeing her around the show ring in the future!

Fancy Colors Satin Serenity



++*B GCH Simple Life Farm Sweetwoodruff 90 EVE
 *B Simple Life Farm P. Revelation
 GCH Simple Life Farm Pokay 2*M
 *B Willow Run Revelation Brennan 87VE (yearling score)
 *B Simple Life Farm Raspberry Fizz
 GCH Willow Run Fizz Brenna 8*M
 Zane Trail Bellary 4*M

 *B GCH Simple Life Raspberry Dakota
 Simple Life Farm Bulrinkle
 Simple Life Farm Raspberycupcak
 Little Shepherd Sitting Bull
 Happy Haven Kodiak
 Indian Creek CK Cheyenne
 Indian Creek Clazy's Ne Ta Na
 Fancy Colors Prissy Pajamas
 Beaver Pines Piejar Bruce
 GPF-Gosh-Posh Schatz's Scampi
 GPF-Gosh-Posh REM's Schatzi
 Fancy Colors Terrific Tabitha
 S.L.A.N.T. Super Dipper
 GPF-Gosh-Posh Promise Prize
 GPF-Gosh-Posh Precious Promise

We've long admired the Simple Life lines and have used them heavily in our breeding program when establishing our foundation stock. Serenity was given her name because we feel she best reflects the "simple life" both top and bottom. We've not been disappointed with anything that's had Little Shepherd Sitting Bull in their pedigree, like Cupcake and Hannah, so we certainly have nothing less than the highest of expectations for Serenity.

Fancy Colors Shortcake



++*B GCH Simple Life Farm Sweetwoodruff 90 EVE
*B Simple Life Farm P. Revelation
GCH Simple Life Farm Pokey 2*M
*B Willow Run Revelation Brennan 87VVE (yearling score)
*B Simple Life Farm Rasbery Fizz
GCH Willow Run Fizz Brenna 5*M
Zane Trail Bellary 4*M

Simple Life Farm Bulwinkle
Little Shepherd Sitting Bull
Indian Creek CK Cheyenne
Little Shepherd Cupcake
Simple Life Farm Jelly Jr.
Little Shepherd Nikka
Little Shepherd Blackberry

I'm going to hold my commentary on "Shorty", but if you'd look closely you'd probably think this was a picture of Cupcake as a kid. It's NOT, it's her daughter. The only surviving daughter of triplets this year! Cupcake has been great to provide us with endless sons in the past, but this is her only living daughter! Needless to say she's a keeper! Watch for her offspring in the future!

Little Shepherd Morning Song



GCH +B Mystery Creek Jedi
++*B Amberwood Jedi's Winter Frost
Jibarski Bo's Secret Whisper 2*M
Prarie Patch Copper Frost
Prarie Patch Matlock
SG Prarie Patch Copperberry
Prarie Patch Copper Mist

Little Shepherd Meadow Hawk
CH Foxwood Faye Lee Meadow
Little Shepherd Morning Glory
Willow Run Valmont Gunnar
Little Shepherd Sage
CH Foxwood Faye Lee Meadow

Song has an interesting personality to go along with her pedigree. She refuses to be ignored and must be in the spotlight, or the center of attention. Let's hope she keeps this attitude has a milk and in the show ring. She holds lots of promise and we look forward to freshening her in 2008!

Reference Does



--*B C/F Delaware Brave
 Little Shepherd Jelly Bess *B
 GCH Little Shepherd Mellie's Bokai 1*M
 Simple Life Farm Jelly Jr.
 --*B Goudyrille: Raspberry Request

Devon Hills Raspberry 1*M
 Devon Hills R Missit
 Little Shepherd Cranberry
 Simple Life Farm Red Mae
 Little Shepherd Nine Rider
 GCH Little Shepherd Mellie's Bokai 1*M
 Little Shepherd Blackberry
 Simple Life Farm Berry Dakota
 Little Shepherd ATT Berries
 Little Shepherd Betty

Cranberry was the most consistent doe in my barn for producing good mammarys. It didn't matter what buck she was bred to, all of her daughters have very nicely attached mammarys. Her son, Fancy Colors CM Perfection, was just as consistent in producing almost flawless udders in area of attachment, that are high and wide in the rear and very smoothly blended in the fore with excellent teat delineation and placement.



Little Shepherd Jelly Bess
 Simple Life Farm Jelly Jr.
 Devon Hills Raspberry 1*M
 S: Just Our Luck Cody
 Little Shepherd Spotted Legend
 CH Twin Valley Legend of Chelsey
 Diski Acres Earth Angel
 Just Our Luck Kaija
 --*B C/F Theresa
 *B Simple Life JB
 GCH Devon Hills Jody 1*M
 D: CH Little Shepherd Oda Mae Brown
 Simple Life Farm H.B.
 GCH Little Shepherd Mellie's Bokai 1*M

What can I say about Kaija other than she was my favorite doe. She was the herd "queen". She is out of one of my all time favorite Ohio does, CH Little Shepherd Oda Mae Brown. She was a very strong healthy doe that was very consistent in producing structurally sound correct offspring, with very strong feet and legs that consistently milk very well. Kaija wouldn't get off of the milkstand until I let her give me a kiss, this was EVERYDAY! When I had major surgery and didn't get to the barn for several long weeks, Kaija passed away at age 9. I still believe it was from a broken heart, but now the only heart that is left broken is mine! She WAS my dearest friend



Simple Life Farm Jelly Jr.
 Little Shepherd Gypsy Rover
 CH Little Shepherd Gypsy Rose
 S: Little Shepherd Fudge Ripple
 Simple Life Farm Jelly Jr.
 Little Shepherd Cranberry
 Little Shepherd Blackberry
 Little Shepherd R Oda J
 --*B C/F Theresa
 *B Simple Life JB
 GCH Devon Hills Jody 1*M
 D: CH Little Shepherd Oda Mae Brown
 Simple Life Farm H.B.
 GCH Little Shepherd Mellie's Bokai 1*M
 Lindholm's Domino's Meliss *M

This is a picture of OJ as a milking yearling where she was Grand Champion Sr. Doe at the 1999 Ohio State Fair Jr. show. I wish I had a better picture of "OJ" to share her wonderful general appearance, body capacity and dairy character, not to mention her nicely attached very capacious mammary. OJ is a combination of the two Little Shepherd does I truly admire and that is Cranberry and Oda Mae. My only regret about this doe is that she has had two substantial leg injuries, one from birth and one from giving birth, that prevent her from being in the show ring to prove herself.



CH Little Shepherd Oda Mae Brown

Fancy Colors Nubians

wants to say

Thank You

for visiting with us!

PLEASE

Come Again & Visit Us Soon!

Visit us at:

<http://www.geocities.com/fancycolorfarm>

e-mail us: fancycolornubians@att.net

PH: 937.766.2619 or 937.768.0457