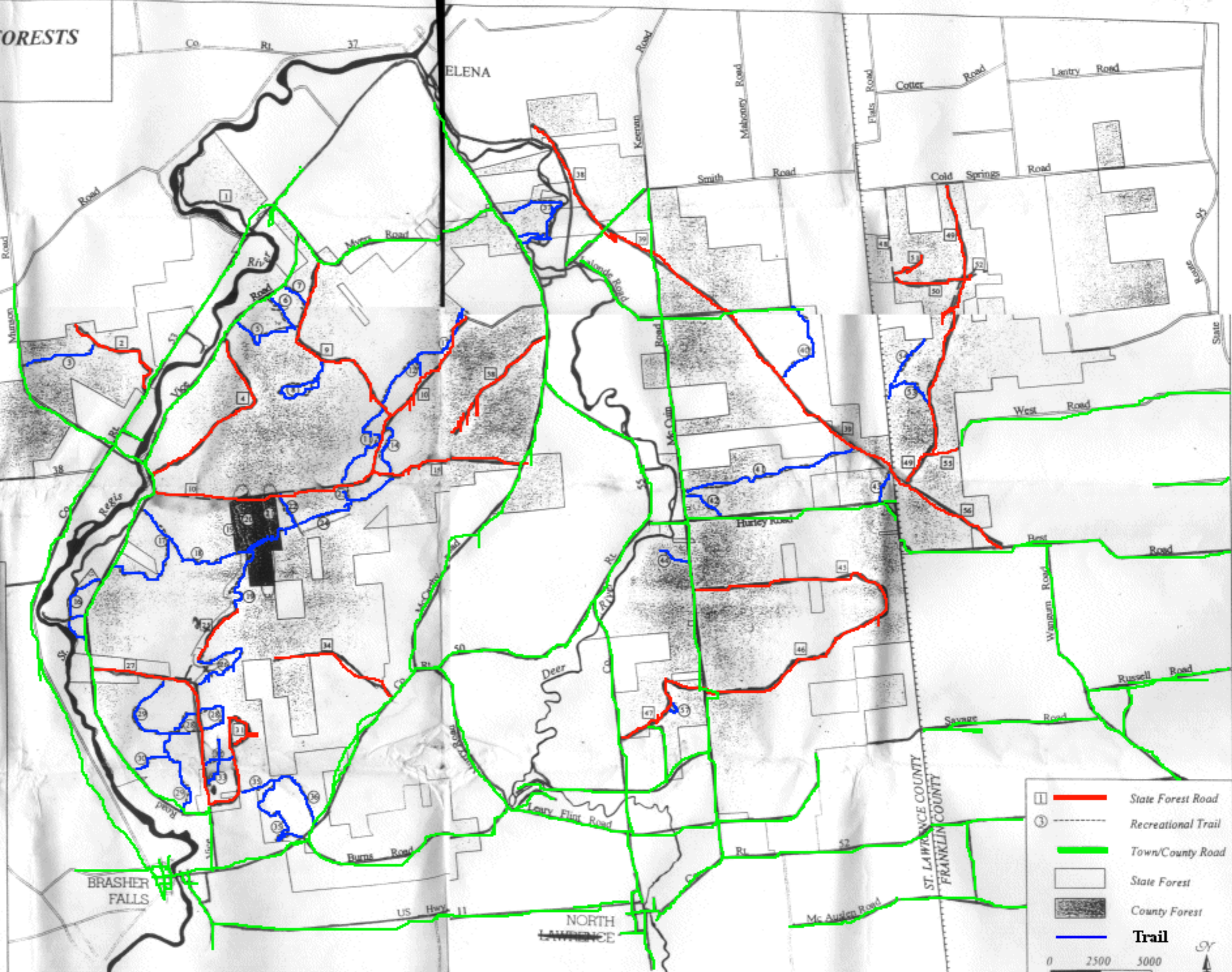


BRASHER AND BOMBAY STATE FORESTS

ROADS AND TRAILS

STATE FOREST ROADS AND RECREATIONAL TRAILS

- | | |
|--------------------------------|-------------------------------|
| 1. Landon Bridge Access Trail | 30. Vice Trail |
| 2. Route 53 Access Trail | 31. Shop Loop Access Trail |
| 3. Munson Trail | 32. Ranger Trail |
| 4. Hastings Falls Access Trail | 33. Nature Trail |
| 5. Black Hawk Trail | 34. Buckley Haul Road |
| 6. Badger Trail | 35. Burns Trail |
| 7. White Feather Trail | 36. Pike Trail |
| 8. Snowshoe Trail | 37. Deer River Loop Trail |
| 9. Wilson Truck Trail | 38. Railroad Bed Access Trail |
| 10. Bush Truck Trail | 39. Railroad Bed Truck Trail |
| 11. Buck Run Trail | 40. Jeep Trail |
| 12. Ralph B. Trail | 41. Hogsback Trail |
| 13. Bobcat Trail | 42. Blue Jay Trail |
| 14. Paul's Trail | 43. Bear Run Trail |
| 15. McCarthy Truck Trail | 44. River Trail |
| 16. Wolverine Trail | 45. Pascal Haul Road |
| 17. Johnnie's Loop Trail | 46. Liberty Truck Trail |
| 18. Beaver Pond Trail | 47. CC Dam Truck Trail |
| 19. North Kennehan Trail | 48. Leach Access Trail |
| 20. County Trail | 49. Pike Brook Haul Road |
| 21. Wolf Trail | 50. Cross Access Trail |
| 22. Turkey Lane Trail | 51. Red Pine Access Trail |
| 23. Kodiak Trail | 52. Durant Access Trail |
| 24. John G. Trail | 53. Hagg Trail |
| 25. Kennehan Access Trail | 54. Esker Trail |
| 26. Deer Trail | 55. West Access Trail |
| 27. Camp/Larue Truck Trail | 56. Railroad Bed Haul Road |
| 28. Red Pine Circle Trail | 57. Redwater Nature Trail |
| 29. Pine Tree Trail | 58. Route 55 Access Trail |



①	—	State Forest Road
③	- - -	Recreational Trail
	—	Town/County Road
	□	State Forest
	■	County Forest
	—	Trail

0 2500 5000
Feet

5-19-10-20-21-22-24-23-11-9-8-7-Road-6-5-R-4-17-R-16-R-27-29-R-Home