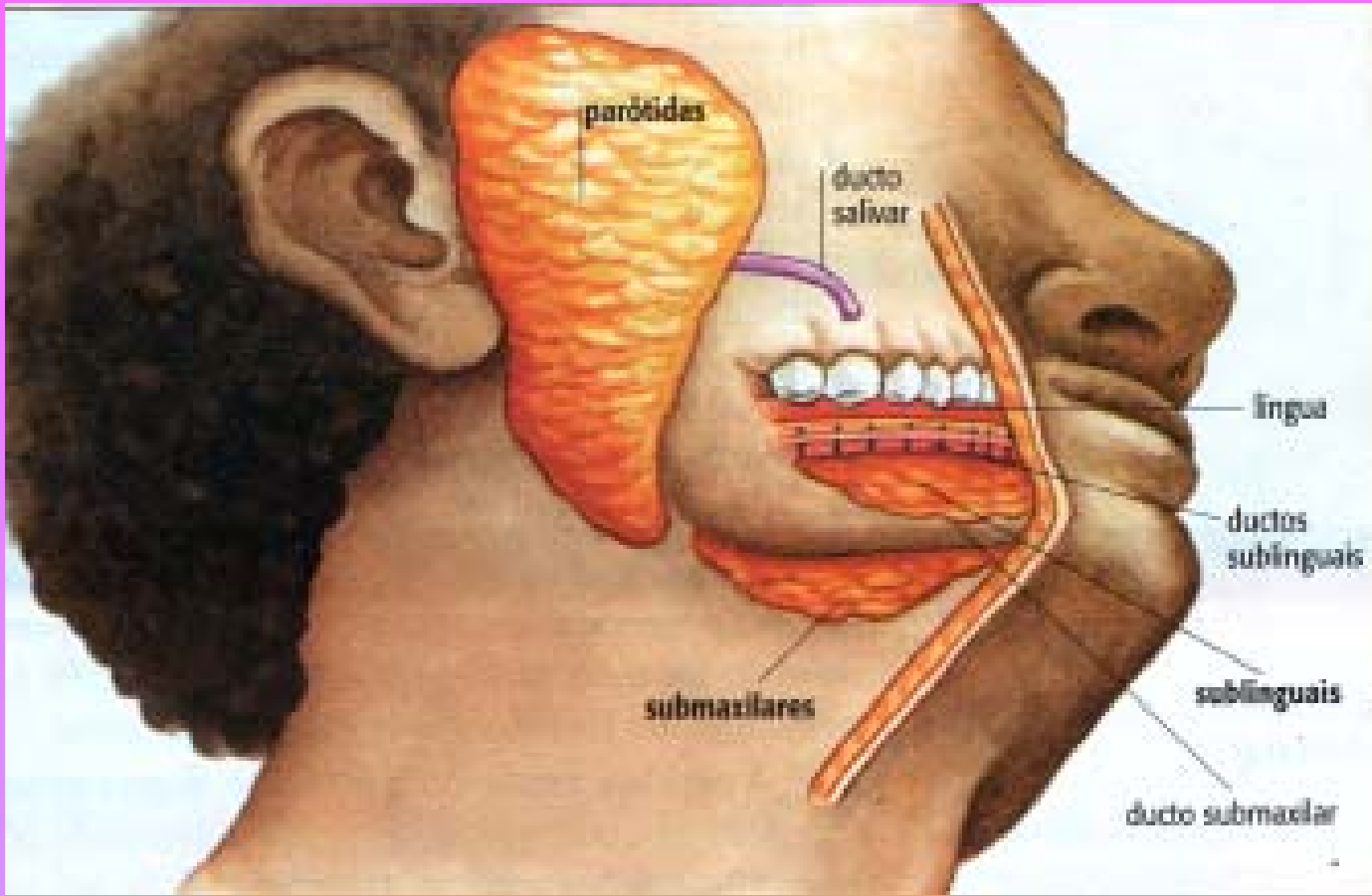


Sistema digestório



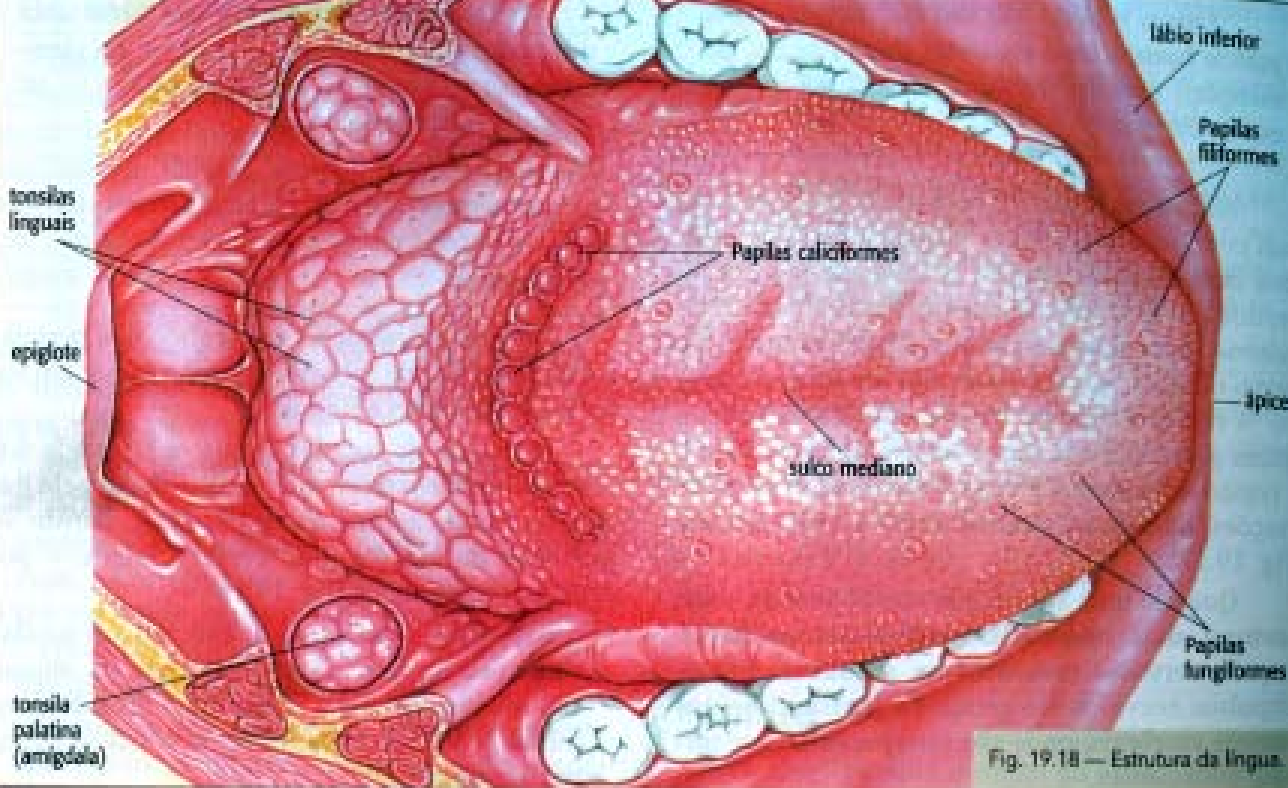
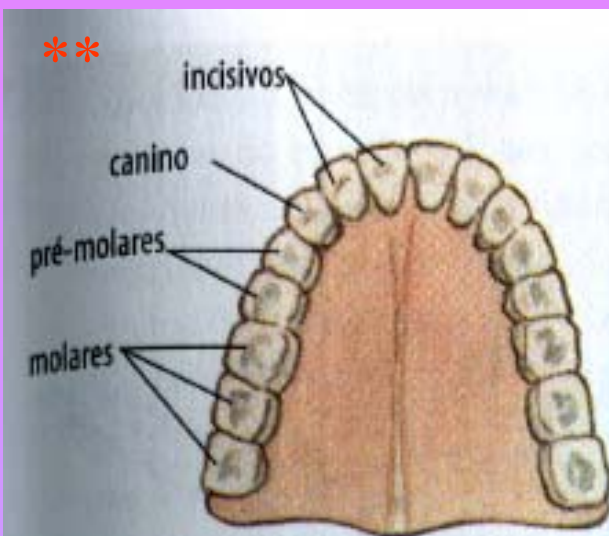


Fig. 19.18 — Estrutura da língua.



Fórmula dentária geral dos mamíferos

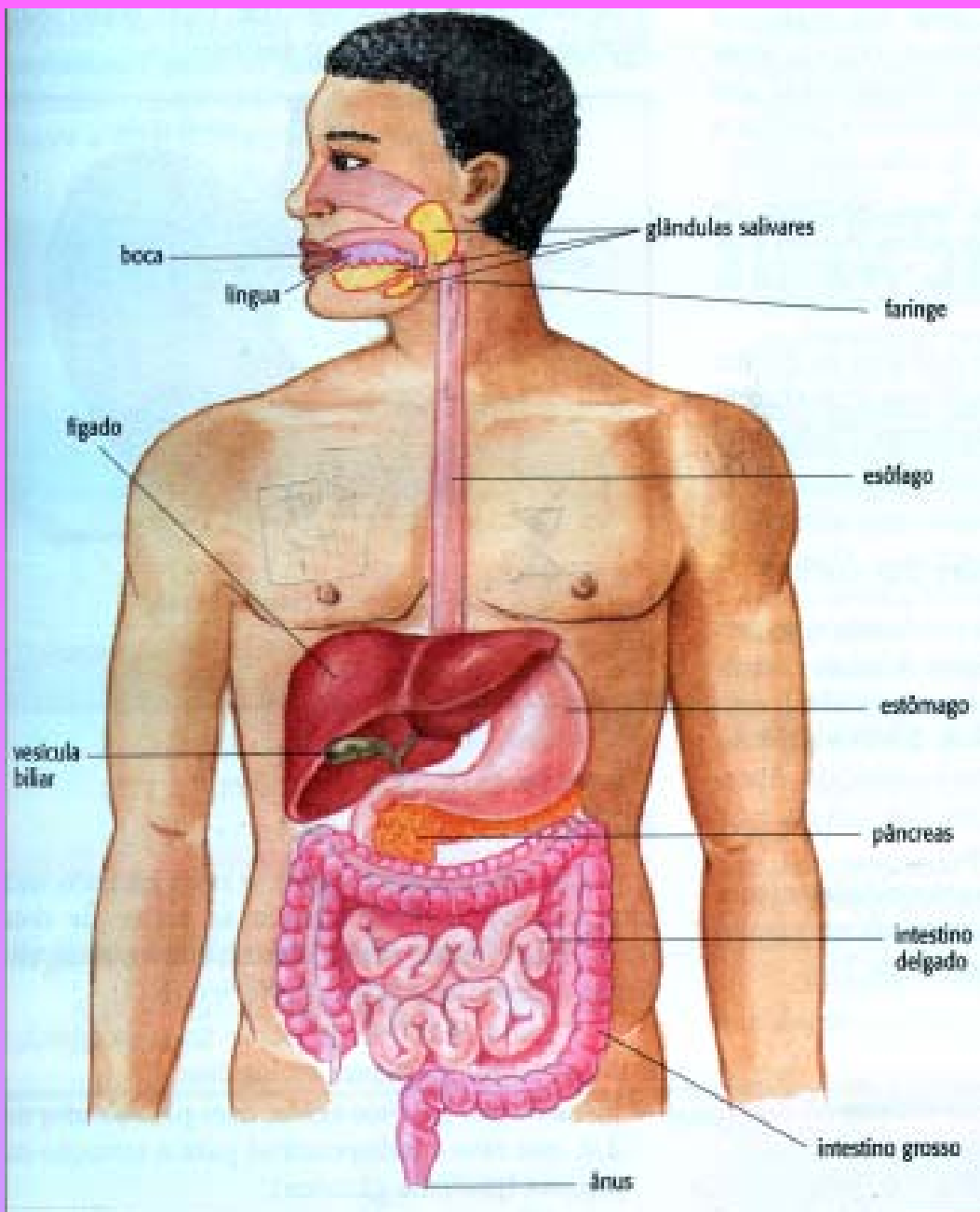
$\frac{I \cdot C \cdot PM \cdot M}{2 \cdot 1 \cdot 2 \cdot 3}$ meia arcada superior

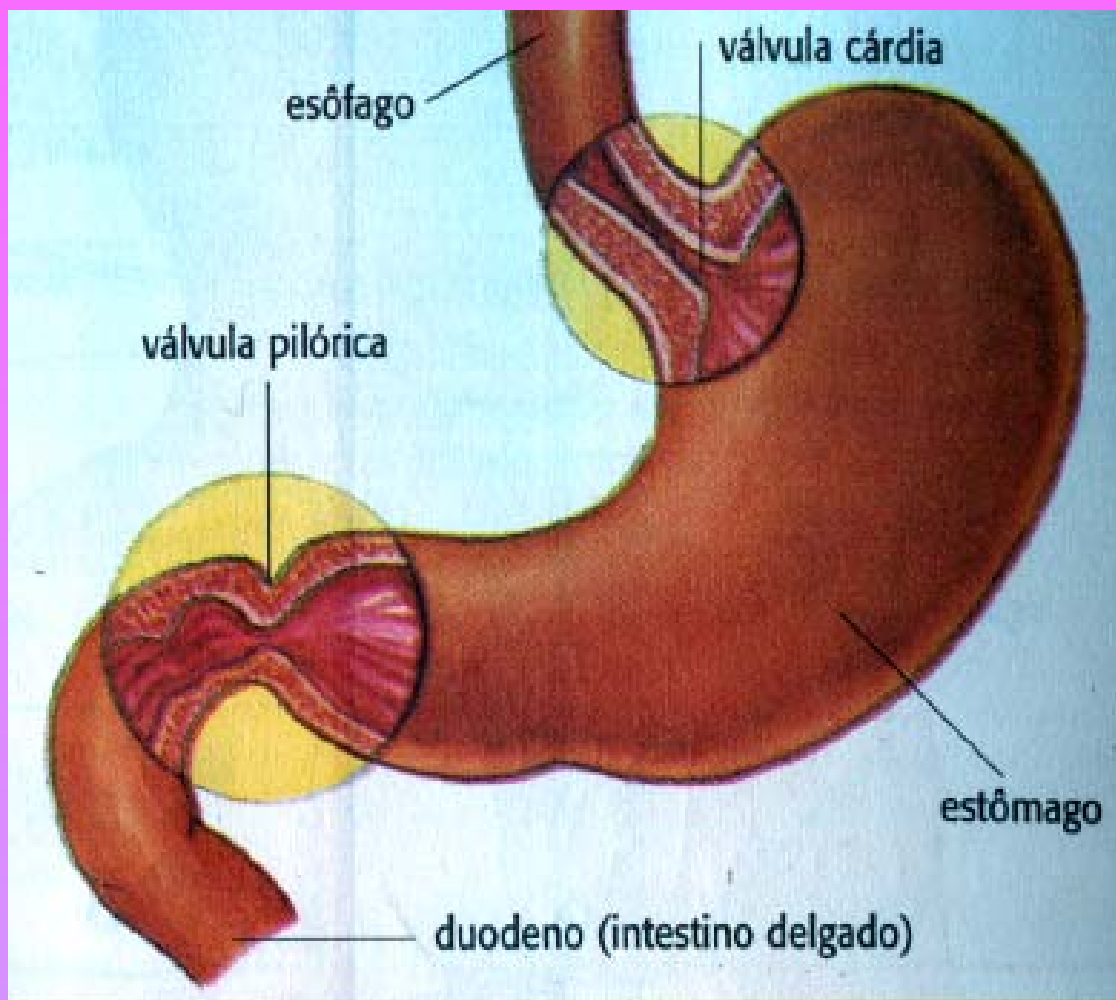
$\frac{I \cdot C \cdot PM \cdot M}{2 \cdot 1 \cdot 2 \cdot 3}$ meia arcada inferior

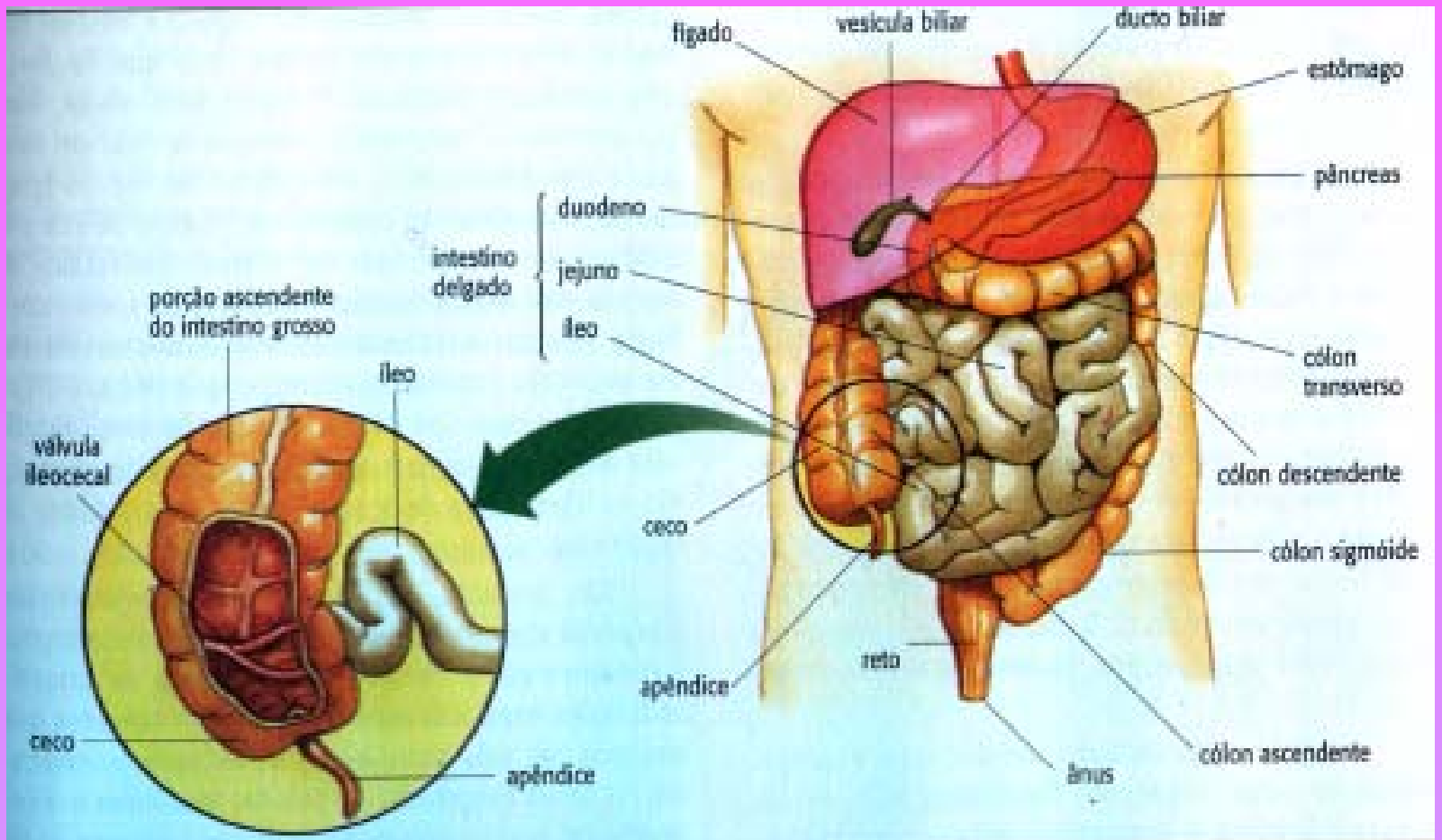
Fórmula dentária do ser humano

$\frac{2 \cdot 1 \cdot 2 \cdot 3}{2 \cdot 1 \cdot 2 \cdot 3}$

$\frac{2 \cdot 1 \cdot 2 \cdot 3}{2 \cdot 1 \cdot 2 \cdot 3}$







Figuras retiradas do livro – Biologia Atual
Wilson Roberto Paulino
volume 2 editora Ática 2002

** Figura retirada do livro Biologia- Série Brasil
Sérgio Linhares & Fernando Gewandszajder
volume único editora Ática , 2003

Sistema Urinário **(excretor)**

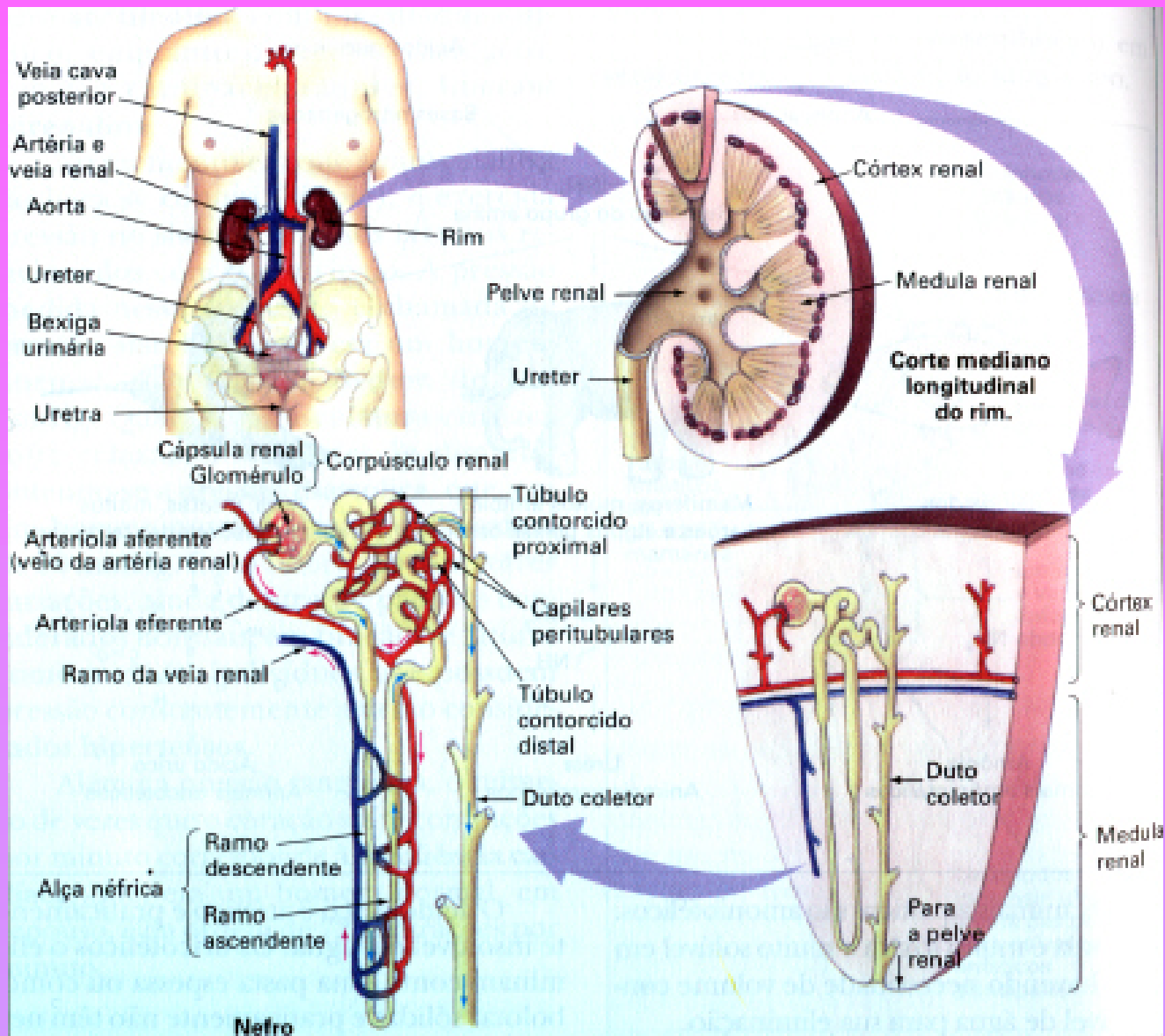


Figura: Lopes, S., Bio-Volume único. Editora Saraiva, 2004

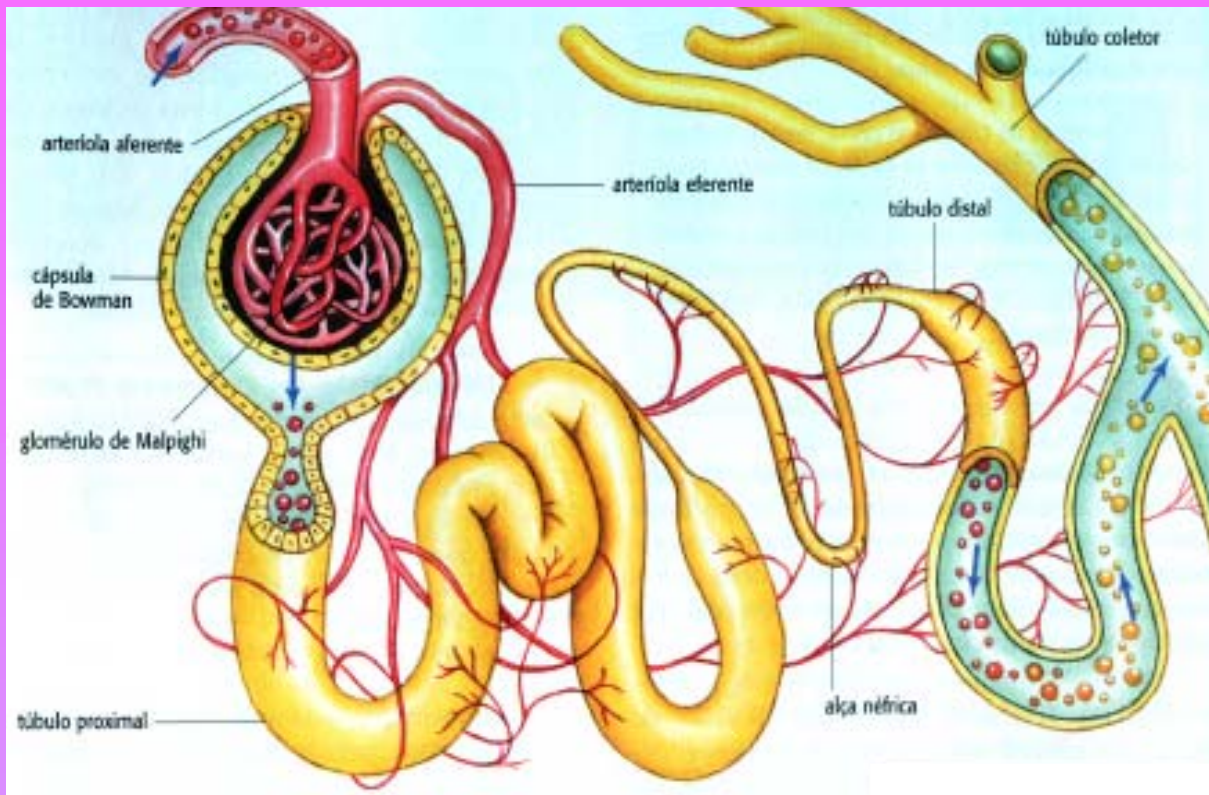


Figura: Paulino, W. R., *Biologia Atual*-volume 2. Editora Ática, 2002