

## **PRESIDENT'S MESSAGE**

**GLENNA SEGALL**

Are you ready to "Fire Up?" I started writing this article on my way down to Chattanooga to the International Council Annual Convention. I scrapped that and started over because I really got "Fired Up" after attending the convention.

If you have never been to an IC Convention, or it's been a while, please plan on going to San Antonio in July 2009. I feel it re-energizes you with the meaning of ESA and all the good things we do. Part of what fired me up will be at the MGLSC's Fall Leadership, so please be sure to attend.

One of my goals for this year is to make our meetings more fun and exciting. They won't be as formal, but important items will be covered. Another goal is to bring back members that haven't attended our Leadership, Fun Day and State Convention. At our Planning Meeting, I requested that the first issue of the Chapter Link is to be sent either by email or snail mail to members we have not seen and Members At Large. I am asking chapters and members that would like to invite guests or potential pledges to Leadership and not ask those guests/pledges to pay for the experience.

Also, I am working with Cyndi Malow, our Webmaster to expand and update the MGLSC website with a new look, and make sure that important information is at our fingertips. Please take a few minutes to look at the website and let either Cyndi or myself know what you think needs to be added, removed or changed.

Membership is still a priority with IC, and I just received a President Newsletter from IC President Judy Huntley. Membership totals as of June 30, 2008 show that we have 10,322 members, a net decrease of 270 members. We have 15 new chapters and 20 disbanded

chapters. Judy would like to see us have a Net Growth this coming year, and I would like to see MGLSC's membership begin to come back up. I feel that we can do this by working together.

Everyone that attended the IC Convention was asked to bring a \$5.00 Wal-Mart gift card to be presented at the Easter Seals presentation. Last year we blew them away with the white towels, well this year I think we showed the representative from Tennessee Easter Seals what ESA could do. The amount that was totaled from these cards was \$4850.00+ and will help 99 Sr. Easter Seals Adults to be able to purchase personal items with these cards.

Show Me The Money and Mystery Night were both successful. Show Me the Money brought in \$4,117.00 for IC Council, and the Mystery Night Event brought in \$3,666.00. The Association of the Arts brought in 150 entries with 49 members participating this year. Even one of our own received an Association of the Arts award, which will be presented to her at this year's Fall Leadership.

The biggest news that came from Executive Director, BJ Clark was the announcement that Mike Burns is retiring. Mike is no longer with ESA, but BJ has made a three to five year commitment to be with us until she retires at that time. It was also announced that ESA is now owned by ESA membership. The change of ownership took a group of previous past IC presidents to conduct a feasibility study to see if this was something that was possible, and good for ESA. Mike Burns said it from the podium as he gave his farewell speech. "We must put our energies into building the ESA Membership. As I understand it the legal experts said it was a good deal and as long as we didn't lose any membership we could meet the bills."

Last was the announcement of our goal for St. Jude this year, which was over \$10,000,000.00. Even though we didn't have many fundraisers for St. Jude as a State council, we were not one of the lower states, and LeAnn Wray did a great job representing our state.

On Saturday, at the 3<sup>rd</sup> General Assembly we had a speaker that I felt was awesome. Her name was Carol Grace Anderson. She did a presentation on "Get Fired Up Without Burning Out." She has some wonderful tips that I feel that we can all use. Look for more information about this throughout the year in the Chapter Link and during our meetings. The first segment will be available at the Leadership in September.

As you can tell from this message I am "Fired Up" for this year. You all are wonderful, talented women, and I know that we can step out of our boxes and go Above and Beyond to make this the best year with ESA, MGLSC and our chapters. See you at Fall Leadership.

## **LOIS W. BYRD, 1<sup>ST</sup>. VICE PRESIDENT MEMBERSHIP CHAIRPERSON**

### **LIGHTING THE FIRE FOR MEMBERS**

In my office, there hangs a sign.

STAY AS YOU ARE  
DON'T EVER CHANGE  
AND YOU WILL CEASE TO EXIST

As you know, I have been an ESA member for 48 years. In that time, I have belonged to four chapters and three state councils. My first chapter is over 50 years old. It has dwindled down to a few mature sisters as most of the chapter sisters have died except for one who moved to Michigan. My second chapter is nearly 30 years old and it grows every year and finds success in volunteerism, ways and means, and sisterhood. My third chapter doesn't exist anymore. My fourth chapter is small and keeps plugging away at volunteer hours and educational programs. What do these chapters have in common and how do they differ?

#### **Chapter #1**

48 years ago, every member was expected to invite a prospective member to each and every social meeting.

After a lady had attended a minimum of four social meetings, they were invited to attend a "model meeting". Chapter business was carried out but controversial and time consuming issues were not on the agenda for the "model meeting". At the next chapter business meeting after the model meeting, each prospective member was discussed. A vote was taken and then an invitation to become a rushee was extended. After six months, the rushee was voted on again, to decide if she would be asked to pledge....pledge time was six months. So it took over one year before a lady could become a member of the chapter. By this time, her ESA attendance and participation habits were so implanted that she made a terrific member. Chapter loyalty was unquestioned. Chapter participation was 99.9 % in every activity including state meetings.

#### **Chapter # 2**

This chapter began when two Indiana sisters formed a chapter in Michigan. It was small but kept rushing. One member was so determined to bring an MAL into the chapter, that she called her several times a week and definitely before any chapter function. The MAL finally gave in to the persistent sister and from there the chapter has grown. They are continually rushing. They have young members...and a couple of mature members...they have changed with the times. This chapter raises funds by using their hands. Chapter loyalty is unquestioned. Chapter participation is at least 80% in every activity including state meetings.

#### **Chapter #3**

This chapter was formed by working sisters who didn't have time to do a lot of fund-raising. They each invested a large sum of money which in turn was invested in stocks and securities. They did their philanthropic giving from the annual proceeds. Their educational were around financial management and they learned how to make monies grow. When retirement came, these ladies moved to distant areas and the chapter ceased to be. Chapter loyalty was unquestioned. Chapter participation was at least 80% in every activity including state meetings.

#### **Chapter # 4**

This chapter has a three focus program. Educational have always been important to them. Fundraisers are the traditional events like Tupperware and Pamper Chef parties. Volunteerism in their communities is the third focus of this chapter. The members of this chapter live

miles and miles apart. They see each other rarely. Chapter loyalty is unquestioned. Chapter participation is by e-mail. Because of their small membership they can boast the 50% participation at state meetings.

Each of these chapters has been successful. One uses traditional rushing to form a close knit chapter. One uses constant rushing and working as a team to grow their chapter. One chapter used economics as the basis for their rushing. One chapter uses modern technology to conduct their chapter.

Each of these chapters has been flexible. Each of these chapters has a loyal sisterhood. Each of these chapters has used the strengths and interests of their members to produce their "ideal ESA chapter". Each of these chapters has been willing to meet the world's demand for change...while maintaining the camaraderie of sisterhood. Hopefully, each of these chapters has ideas for you as you seek new ESA members. The bottom line for ESA membership goes back to my office sign.

STAY AS YOU ARE  
DON'T EVER CHANGE  
AND YOU WILL CEASE TO EXIST

## LEANN WRAY, 2<sup>ND</sup> VICE PRESIDENT

Greetings Ladies

I hope this finds everyone enjoying their summer! I know it has been hot and humid, but it's not anything like Chattanooga was! WOW, was it humid!

We had a wonderful IC experience, with many great speakers, a concert by Confederate Railroad, and a time for renewing friendships and making new friends! I am not sure if anyone else who was present at this "fun time" will be writing about it, but just in case, I am going to tell you a memorable experience from this IC Convention. Pat Ludwig, Jean Varga, Brenda Meyers from Ohio, and myself went to Lois Byrd's room for a little conversation, and a couple of glasses of wine. It was fairly early in the evening, 10:30pm or so. Well, we were having a great time, telling ESA stories and of course, having a few good laughs. Suddenly there was a knock at the door. Lois answered and it was **Security**....telling us there had been a complaint about

the noise coming from this room. Well, let me tell you, it has been a long time, and I mean a long time, since I was told to keep it down!! As the security guard left, I am sure she was laughing that these ladies were the cause of the phone call! And her last words were, "Don't make me come back up here!"

I have been struggling with what this article should contain. I went to the MARC website and started looking at other states newsletters. I came across this article, written by Judi King. I emailed her for permission to use this in my article. I really believe this says it all about what ESA is and means to me. I hope that you will talk about ESA to your friends, relatives, and people at work. And don't forget to **ASK** if they would like to attend a meeting!

As a premier leadership and service organization, Epsilon Sigma Alpha offers our members the personal assistance and supportive programming needed to develop confidence and competence to go forth and impact the world in a positive way. Unlocking the personal challenge that resides within is the key to success, and ESA gives our members the background and assistance to do just that. Whether your aspirations are career oriented, volunteer driven or socially motivated, ESA helps you achieve your goals. Our single purpose is to inspire leadership and service by bringing good people together to pursue programs and projects that make a positive difference locally, nationally and internationally. Give your life purpose with ESA... we touch the lives of others while changing our own.

Remember: "A life consistent with your values makes you secure, confident and strong."

## MANDY REINKE, TREASURER

Summer greetings to all Michigan sisters! I am looking forward to hearing all about our National Convention from those who attended. I hope many of them got articles in to Pat in time for this issue of the Chapter Link! I am going to try and get the books closed by the end of the month and get them audited in August so they are ready to go September 1<sup>st</sup> for our new fiscal year. I just want to remind everyone that our Michigan State Council Dues will be due September 1, 2008 for your chapter to be considered in good standing. Dues

are **\$15 per member** and a buffer fee of **\$10 per member** is also requested. I'll look for your envelopes in my mail box in the latter part of August!

**AT THE COPA...**We have had 5 successful games at Comerica Park. To date we have earned \$3,161.66 in commission checks and \$265.08 in tips for a total of **\$3,425.74**. I hope I can speak for everyone that has worked a game when I say that while we have had our challenges, working the games has been fun and it has been a great way to get to know my Michigan sisters that aren't in my chapter. (And even those who are in my chapter.) We had to cancel our game on the 10<sup>th</sup> of July because we didn't have enough workers but I am really hoping we won't have to do that again. Thank you to everyone for your support as I have found my way around this project. I think I may be getting the hang of it!

### **PAT LUDWIG, COUNCIL EDITOR**

As always, I want to first thank everyone that got their articles to me for this newsletter. Please don't feel that you have to be an officer to write an article or submit something for the Chapter Link. Everything is welcome – interesting facts, poems, recipes, and any other tidbits that may be interesting to your sisters.

I also want to take just a minute to add a few other highlights from our week in Chattanooga at IC Convention. One evening, several of us went to Sticky Fingers for dinner. A few of us ordered an alcoholic beverage and we were actually asked for ID. **IMAGINE THAT!**

Different groups of us also went to the Tennessee Aquarium and the IMAX (where we learned about Dolphins and Whales), took the Incline Railway to the top of Lookout Mountain, and visited Rock City – also on the top of Lookout Mountain.



Our State's Night Out dinner was at the Chattanooga Choo Choo where all of the waiters and waitresses not only serve you, they get up on stage and sing for you. It was a very enjoyable evening.

Of course, the actual meetings and workshops were fantastic as they always are. At Leadership, Mary Foley encouraged us to "Live Like Your Nail Color – Even if You Have Naked Nails!" Then Lisa Earle McLead tackled the age old question "What is the meaning of life and why are other people so \*#\$%@! Annoying?"

There were workshops for the State Presidents, Membership, Easter Seals, the ESA Foundation, Digital Photography, Computer Maintenance, and New Chapter Projects. There was also a hands-on workshop where you could actually learn to make a craft item, and finally, a cooking demonstration by Judy York and all of the Judy's on the IC board – and we actually got to sample the food. We all came home with the recipes and vow to try them ourselves.

The keynote speaker on Saturday was Carol Grace Anderson who encouraged us to "Get Fired Up" and told us about "Finding Grace – Even When You Can't Find Your Underwear."

The crowing glory of the week is the Installation of Officers and Banquet on Saturday night where the total raised for St. Jude is always announced. This years total is



As always, the convention was wonderful and I want to encourage those of you who have not been to an IC Convention to try to attend at least one as you will be very pleasantly surprised at how well everything runs and how much fun you will have.

## JANET GARDOCKI, EASTER SEALS COORDINATOR

The Centers for Disease Control and Prevention (CDC) said in 2007 that autism is the epidemic of our time. As many as **one in 150 children are being diagnosed with autism**. Easter Seals is working in Washington, encouraging Congress for more financial support for organizations which are researching to find the cause and cure for autism...both unknown.

Easter Seals works closely with other autism organizations—such as the Autism Society of America (ASA). One of their mutual goals is to learn how advances in research can be applied to the many therapies which Easter Seals provides - as quickly as possible.

According to Easter Seal's-Autism 101: "Autism Spectrum Disorder (ASD) or autism is a developmental disability. It is felt that a *neurological condition* affects normal brain function, development and social interactions. Children and adults with autism find it difficult or impossible to relate to other people in a meaningful way, may show restrictive and/or repetitive patterns of behavior or body movements, and often have some degree of mental retardation."

More information can be found by visiting: [autism.easterseals.com](http://autism.easterseals.com).

While cause and cure are not known, autism is treatable...and today **Easter Seals is our country's leading provider of services for autistic people and their families**. Comprehensive physical, occupational, speech and other therapies are being given to autistic patients by trained therapists in Easter Seals facilities and private homes. Autism generates a huge amount of stress on families and Easter Seals trains parents as interventionists and treatment partners. It is a lifelong disability and receiving the right support at the earliest stage in life can help a child gain the skills needed to be successful. However, it's never too late...Easter Seals supports autistic people at any age.

"**Annual cost** of providing services for people with autism is **\$90 million dollars**. In **10 years that number is projected to be \$200-400 billion**. With **early diagnosis** and intervention, the overall **cost of treatment can be reduced by two-thirds** over an individual with autism's lifetime," as per a 2007 study by the London School of Economics.

**Please help fight the disabling effects of Autism by supporting Easter Seals.** This year some of MGLSC's fund raisers will include:

CARTRIDGES FOR KIDS: Used cell phones, ink cartridges, PDAs, laptops and iPods® generate funds for Easter Seals and will be credited as ESA fund raising. Bring your products to state meetings to be combined for mailing **or print a postage paid mailing label** by visiting: <http://www.recycleaccess.com/easterseals>. Use your chapter name and number and ESA Michigan as return address. Box should **not exceed 25 pounds**. Canon or Epson inkjet cartridges are **NOT** accepted. Lexmark HP, Dell and Xerox Inkjet Cartridges **ARE** accepted. Please let me know what you mail.

**MGLSC HAS OBTAINED ONE OF THE DISCONTINUED PRECIOUS MOMENTS "SAMMY CIRCUS SETS."** It will be raffled off as soon as our dollar goal is reached. Tickets are \$2.00 each or 6 for \$5.00. If you are hosting a public event where you can sell raffle tickets, please let me know and I will provide a color poster and the Easter Seals Raffle tickets.

I am asking that each chapter host one project for the benefit of Easter Seals.

Peace, love and good health.

## GEORGENE FARR, FOUNDATION COUNSELOR

Its almost time for the Combined Federal Campaign. The ESA Foundation has been approved for national eligibility in the CFC. This gives the Foundation the same recognition as American Red Cross, American Cancer Society, St. Jude Children's Research Hospital, Easter Seals, etc. As a nationally approved organization, the ESA Foundation will appear on the campaign brochures in every Federal Agency in the United States.

Combined Federal Campaigns may be held in any six week period during the months of September, October and November. That six week period will vary from location to location. Members are encouraged to tell their friends and co-workers about the ESA Foundation #10031 on the CFC Form.

The ESA Foundation must reapply each year for eligibility in the CFC. The administrative expenses of the Foundation must not exceed 25% to remain on the CFC list. The Foundation usually has administrative expenses of approximately 17%.

## PAT LUDWIG, MARC REPRESENTATIVE

I just want to pass along a little bit of information from the MARC meeting that was held during the IC Convention.

It was added to the By-Laws that the 1<sup>st</sup> Vice President will go to Leadership each year and the President will be the alternate. Nebraska was added to the Standing Rules as one of the MARC states.

Funds were added to the budget to purchase Flash Drives as we did in Michigan.

Articles for reMARC should be sent to Shirley Krcmar at [krcgolf@zoominternet.net](mailto:krcgolf@zoominternet.net) by August 1<sup>st</sup>.

The 2009 MARC Conference will be held October 9 – 11 at the Holiday Inn in Fairborn, Ohio. The theme is “The Wright Place to Be” and the room rate is \$92.00.

The 2010 MARC Conference will be held October 8 – 10 at the Adams Mark Airport Hotel in Indianapolis, Indiana. Room rate is \$109.00.

Each **chapter** is requested to submit a handcrafted item for the silent auction to be held at the MARC Conference in October. Each **state** is requested to submit one item for the Chinese Auction. These are the Ways & Means projects for MARC that help sustain the organization as we pay no dues to MARC so please help. I will be happy to take your handcrafted items if you are unable to attend.

And --- speaking of the MARC Conference. Did you know that this years conference will be

### A GRAND DUTCH TREAT



at the Airport Hilton in Grand Rapids, Michigan, October 10-12 and that the room rate is only \$85.00? I know the

## LITTLE DUTCH GIRLS



have many wonderful things planned for everyone. **Our own Sandy Lee will be installed as MARC president.** In addition, LeAnn Wray is running for MARC Parliamentarian and I am running for MARC Communicator.

The information form, registration form, and the form to reserve a table for

## THE DUTCH MARKET



can be found at the end of this Chapter Link. **Please make plans now to attend the MARC Conference this year and support Sandy and your Michigan sisters.**

## NORMA BAKER, CHAPLAIN

A thought for today and tomorrow-

Are you a bellows? You know the "thingie" that adds air to a fire's embers to get it really going. That's what we can be to help our President FIRE UP ESA. Show everyone what a flaming good group we are, in other words boast (blow about) what we're all about.

I have not received any News from the IC or MARC Chaplains since IC. Nor have I heard from any MGLSC members.

I do have some good news from my great grandchildren list - Another GREAT granddaughter Ava Ryan, daughter of my Granddaughter, Shelly and her husband Dave. 9# 1oz of charm and good looks.

Please let me know your needs for caring thoughts, prayers, sympathies and also share the happy times and events.

# CHAPTER NEWS

## ALPHA KAPPA #4401

By Cyndi Malow

Welcome to summer! Hope all of you will have some time to enjoy warm, sunny days, flowers, vacationing, the outdoors, visits from family and friends. It was good to hear that so many were able to go to Tennessee and it sounds like IC had another great convention.

Mandy is doing a fabulous job with the Tiger game service concessions. The figures are impressive both in the number of sisters working the games and the amount we have raised. Only one set-back with the canceling of the July 10<sup>th</sup> game but we will be back, I'm sure, for the last 4 games of the season – July 27<sup>th</sup> August 15<sup>th</sup> and 26<sup>th</sup>, and September 9<sup>th</sup>. Looking forward to seeing you there.

Alpha Kappa had a wonderful installation dinner and we were happy to welcome State President, Glenna Segall and Junior Past President, Nancy Irvine who joined us for the festivities. Glenna presided over a beautiful installation and we are planning to fly our ESA kites high during the coming year.



MGLSC President, Glenna Segall; Kellie Hammers, Educational; Treasurer, Jessica Iloff; Vice President, Jean Varga; Secretary, Joann Zaleski; President, Cyndi Malow

Alpha Kappa's Michelle Doherty was awarded 4<sup>th</sup> Degree Pallas Athene at our final meeting of the year. Congratulations Michelle!



Alpha Kappa is now in the final preparation stage for our upcoming Sterlingfest Craft Show. The Art and Jazz Festival is held at the City Center (Dodge Park and Utica Road) on July 31, August 1 and 2. We are prepared for great weather, a big crowd, and lots of sales. It's a fun weekend so if you are looking for a place to have a good time, join us.

Hope to see you all often during the coming year.

## BETA OMEGA #4311

By Dena Nault

Beta Omega now has a small raffle license. We will be having a 50/50 raffle at MARC Conference. Dena will be having a picnic this summer. Her granddaughter Kelsey is home from the hospital. Hope everyone is having a nice summer

## BETA RHO #4290

By Jan Wall, Lois Byrd, and Georgene Farr

News from sunny Florida, well, not so sunny this week. We have had a lot of much needed rain!! My daughter, Chris, was here for a few days and sad to say she did not go home with a TAN.

It was nice to put faces with names at convention. I really enjoyed the convention. Spending time with my sisters was really special, as it has been a long time since I saw many of them. A special thanks to Kay Mayer for her extra effort for my visit.

In June, I went to stay with my Mother in Indiana while my brother was on vacation. We had a good time together - even got her to play some cards with me.

Next week I will travel to Michigan to see my daughter's family. There will be many grandchildren activities to attend. We might even be able to get to Caseville to check up on my house and see some of my friends up there.

Keep up the good work at the Tiger games - wish I could help.

Have a great summer. JAN

I achieved a new goal. Driving 1600 miles round trip to and from IC Convention...was a real challenge...and with Sandy's steady conversation...I made it. The trip on Sunday was 12 hrs 12 minutes driving time...that doesn't count breaks for lunch, gas, and potty. It would have been a shorter time if it hadn't been for that terrible rain storm. I knew I could do it...but I feel so good that I proved to myself that I can do almost anything, if I focus on it. LOIS

I spoke with Joanne Larson yesterday. She sounded really good. She did mention that she has to use a wheelchair to get around now. She is getting along OK.

Jim and I attended IC (along with Lois) and had a great time. Those of you who didn't go, really missed a good convention. Before hand, Jim took hang gliding lessons and on Monday, July 7 he took a tandem ride and loved it. GEORGENE

## **LAMBDA CHI #5858**

### **By Carol Stephens**

Summer is moving fast. We do not have regular business meetings, but continue with fundraisers. The Sunday Tiger's game at Comerica will have about 4 Lambda Chi sisters working. That should be a fun time. We plan on having a booth at the Fenton Art Fair, August 16 & 17, to offer quilts and cards for purchase.

We also are planning a grocery raffle in the fall for a Ways and Means project. Details have to be confirmed.

We will miss Rebecca Callow. She and her husband have left Michigan for Texas. New job, new house, etc. We wish her well. Now we have a place to visit in Texas.

Enjoy the rest of the summer. We will see you in the fall.

## **SIGMA TAU #4854**

### **By Pat Ludwig**

By now, I'm sure you are getting tired of hearing from me, but since my Chapter sisters seem to be busy, I get to write this article also.

Obviously, you know that I just got back from IC Convention and had a great time. It is always a treat to spend time with my MGLSC sisters (husbands also). I'm trying to see when I can squeeze some time in to take a trip to Las Vegas in September but have not booked anything yet.

Carol D. has been at her place in Oscoda but is home now for a couple of weeks. She will be going back up at the end of July as her mother will be visiting with her for a couple of weeks.

Not sure what Carol S. is doing but I am sure that those 4 young-un's will be keeping her busy with all of their summer activities.

Hope everyone has enjoyed the summer so far, will continue to enjoy the rest of it, and is making plans to attend the MARC Conference in October.

## **Interesting Information**

This was sent to me by Janet Gardocki and I felt it was worth adding to the Chapter Link.

### **From the Pocono Record, serving Northeast Pennsylvania, 5/6/08**

Data released by the United States Environmental Protection Agency shows that somewhere between 500 billion and a trillion plastic bags are consumed worldwide each year.

Less than 1% of bags are recycled. It costs more to recycle a bag than to produce a new one.

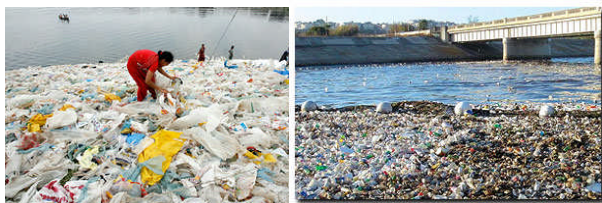
"There's harsh economics behind bag recycling: It costs \$4,000 to process and recycle 1 ton of plastic

bags, which can then be sold on the commodities market for \$32”

Then...Where do they go?

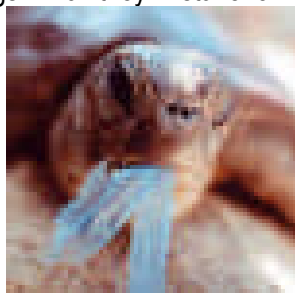
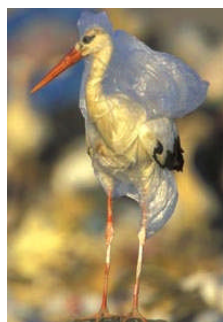
A study in 1975, showed oceangoing vessels together dumped 8 million pounds of plastic annually. The real reason that the world's landfills weren't overflowing with plastic was because most of it ended up in an ocean-fill.

Bags get blown around to different parts of our lands and to our seas, lakes and rivers. Bags find their way into the sea via drains and sewage pipes. Plastic bags have been found floating north of the Arctic Circle near Spitzbergen, and as far south as the Falkland Islands. Plastic bags account for over 10 percent of the debris washed up on the U.S. coastline.



Plastic bags photodegrade: over time they break down into smaller, more toxic petro-polymers which eventually contaminate soils and waterways. As a consequence, microscopic particles can enter the food chain. .

The effect on wildlife can be catastrophic. Nearly 200 different species of sea life including whales, dolphins, seals and turtles die due to plastic bags. They die after ingesting plastic bags which they mistake for food.



So...What do we do?

If we use a cloth bag, we can save 6 bags a week – 24 bags a month – 288 bags a year – 22,176 bags in an average life time. If 1 out of 5 people in our country did this we would save 1,330,560,000,000 bags over our life time.

Bangladesh has banned plastic bags. China has banned free plastic bags. Ireland took the lead in Europe, taxing plastic bags in 2002 and has now reduced plastic bag consumption by 90%. In 2005 Rwanda banned plastic bags. Israel, Canada, western India, Botswana, Kenya, Tanzania, South Africa, Taiwan, and Singapore have also banned or are moving toward banning the plastic bag. On March 27, 2007, San Francisco became the first U. S. city to ban plastic bags. Oakland and Boston are considering a ban.

Plastic shopping bags are made from polyethylene: a thermoplastic made from oil. Reducing plastic bags will decrease foreign oil dependency. China will save 37 million barrels of oil each year due to their ban of free plastic bags. It is possible...

## Something to Think About

Crabby Old Man – submitted by Janet Gardocki

When an old man died in the geriatric ward of a small hospital near Tampa, Florida, it was believed that he had nothing left of any value. Later, when the nurses were going through his meager possessions, they found this poem. Its quality and content so impressed the staff that copies were made and distributed to every nurse in the hospital.

One nurse took her copy to Missouri. The old man's sole bequest to posterity has since appeared in the

Christmas edition of the News Magazine of the St. Louis Association for Mental Health. A slide presentation has also been made based on his simple, but eloquent, poem.

And this little old man, with nothing left to give to the world, is now the author of this 'anonymous' poem winging across the Internet.

### Crabby Old Man

What do you see nurses?...What do you see??  
What are you thinking...when you're looking at me.  
A crabby old man...not very wise,  
Uncertain of habit...with faraway eyes.

Who dribbles his food...and makes no reply.  
When you say in a loud voice...'I do wish you'd try!'  
Who seems not to notice...the things that you do.  
And forever is losing...a sock or a shoe.

Who, resisting or not...lets you do as you will,  
With bathing and feeding...the long day to fill.  
Is that what you're thinking? Is that what you see?  
Then open your eyes, nurse...you're not looking at me.

I'll tell you who I am...as I sit here so still,  
As I do at your bidding...as I eat at your will.  
I'm a small child of Ten...with a father and mother,  
Brothers and sisters...who love one another.

A young boy of Sixteen...with wings on his feet,  
Dreaming that soon now...a lover he'll meet.  
A groom soon at Twenty...my heart gives a leap.  
Remembering, the vows...that I promised to keep.

At Twenty-Five, now...I have young of my own.  
Who need me to guide...and a secure happy home.  
A man of Thirty...my young now grown fast,  
Bound to each other...with ties that should last.

At Forty, my young sons...have grown and are gone,  
But my woman's beside me...to see I don't mourn.  
At Fifty, once more...babies play 'round my knee,  
Again, we know children...my loved one and me.

Dark days are upon me...my wife is now dead.  
I look at the future...I shudder with dread.  
For my young are all rearing...young of their own.  
And I think of the years...and the love that I've known.

I'm now an old man...and nature is cruel.  
Tis jest to make old age...look like a fool.  
The body, it crumbles...grace and vigor, depart.  
There is now a stone...where I once had a heart.

But inside this old carcass...a young guy still dwells,  
And now and again...my battered heart swells.  
I remember the joys...I remember the pain.  
And I'm loving and living...life over again.

I think of the years...all too few...gone too fast.  
And accept the stark fact...that nothing can last.  
So open your eyes, people...open and see.  
Not a crabby old man. Look closer...see..ME!!

Remember this poem when you next meet an older person who you might brush aside without looking at the young soul within.....we will all, one day, be there, too! - Janet

# Thanks

Dear Sisters of the Michigan Great Lakes State Council,

I want to take a moment more of your time to let you know how much I appreciated your wonderful support during my husband, Steve's illness, death, and funeral.

Your prayers, Mass cards, Novena's, get well and thinking of you cards, phone calls, offers of assistance, gifts and flowers meant so much to Steve and me.

The short time we had from diagnosis to Steve's death was well spent. All of your support helped to keep us both strong and focused on living out each day in the best way available to us.

All of your visits to the funeral home on Thursday and Friday and then to the church on Saturday was truly remarkable. I know that each of you will be blessed for your efforts to comfort my family and myself.

Thank you, Michigan ESA sisters; you are Michigan's angels and I love each of you. Janet Gaardocki

# Dates to Remember

- |                               |   |
|-------------------------------|---|
| August 1, 2008                | Pay IC Dues to IC Treasurer<br>Rose Pasillas                                      |
| August 23, 2008               | General Board Meeting<br>Hostess: Lambda Chi<br>Location: LeAnn Wray's home       |
| September 1, 2008             | Pay MGLSC Dues & Buffer Fee<br>to Treasurer, Mandy Reinke                         |
| September 15, 2008            | Tax Facts Form due at IC Headquarters   |
| September 20, 2008            | General Council Meeting/Leadership<br>Hostess: Delta Rho<br>Location: Williamston |
| October 10-12, 2008           | MARC Conference<br>Airport Hilton, Grand Rapids, MI                               |
| January 17, 2009              | General Board Meeting<br>Hostess: Beta Omega<br>Location: Red Cross, Flint, MI    |
| March 14, 2009                | General Council Meeting/Fun Day<br>Hostess: Alpha Kappa                           |
| April 1, 2009 (postmark date) | Submission deadline for awards  |
- Send to Lorraine Persh
    - Distinguished Athenian Service Award
    - Gold Link Award
    - Gold Seal Merit Award
  - Send to Carol Stephens
    - Outstanding Woman of the Year Nominations
    - Mr. & Ms. Enthusiasm Award Nominations
    - Diana Award Nominations
    - Reach Out Award Nominations

## Dates to Remember (cont'd)

May, 2009

General Council Meeting/Annual Convention  
Hostess: Alpha Lambda, Beta Rho &  
Sigma Tau

June 1, 2009 (postmark date)

Submission deadline for awards

Send to Carol Stephens & LeAnn Wray  
Chapter, Council, and IC Philanthropic Projects Reports  
Philanthropic Donations & Disaster Fund payments must be  
postmarked by June 1<sup>st</sup> to be counted on the report

Send to Carol Stephens & Janet Gardocki  
Easter Seals Reporting Information

Send to Carol Stephens & Debbie Sutton  
Circle of Life (St. Jude) Reporting Information

Send to Carol Stephens & Nancy Irvine  
Disaster Fund & Love Fund Reporting Information

Send to Carol Stephens & Lois Byrd  
Membership – Rushing Reporting Information

Send to Carol Stephens  
Healthy Chapter Application  
Past State President's Award Information  
Membership Award  
Outstanding Pledge of the Year Award

July 12-19, 2009

IC Convention  
Crowne Plaza Riverwalk  
San Antonio, TX

# **Michigan Great Lakes State Council 2008–2009 General Board Members**

## **Executive Officers**

<b>President</b>	<b>Glenna Segall</b>
<b>1<sup>st</sup> Vice President</b>	<b>Lois Byrd</b>
<b>2<sup>nd</sup> Vice President</b>	<b>LeAnn Wray</b>
<b>Recording Secretary</b>	<b>Georgene Farr</b>
<b>Treasurer</b>	<b>Mandy Reinke</b>
<b>Parliamentarian</b>	<b>Jean Corey</b>
<b>Council Editor</b>	<b>Pat Ludwig</b>
<b>Educational Director</b>	<b>Lorraine Persh</b>
<b>Jr. Past President</b>	<b>Nancy Irvine</b>

## **Appointed Officers**

<b>Chaplain</b>	<b>Norma Baker</b>
<b>Historian</b>	<b>Sandy Lee</b>
<b>St. Jude Coordinator</b>	<b>Debbie Sutton</b>
<b>Easter Seals Coordinator</b>	<b>Janet Gardocki</b>
<b>ESA Foundation Counselor</b>	<b>Georgene Farr</b>
<b>MARC Representatives</b>	<b>Pat Ludwig</b>
	<b>Pattie Wieber</b>
<b>Collegiate/Youth Coordinator</b>	<b>Jean Dolley</b>
<b>Corresponding Secretary</b>	<b>Carol Stephens</b>
<b>Webmaster</b>	<b>Cyndi Malow</b>

## Chapter Presidents

<b>Alpha Kappa</b>	<b>Cyndi Malow</b>
<b>Alpha Lambda</b>	<b>Kay Mayer</b>
<b>Alpha Xi</b>	<b>Dorothy Smith</b>
<b>Beta Omega</b>	<b>Dena Nault</b>
<b>Beta Rho</b>	<b>Georgene Farr</b>
<b>Beta Sigma</b>	<b>Ginny Lambert</b>
<b>Delta Rho</b>	<b>Clata Raines</b>
<b>Lambda Chi</b>	<b>Patty Jordan</b>
<b>Sigma Phi</b>	<b>Marie Miller</b>
<b>Sigma Tau</b>	<b>Pat Ludwig</b>
<b>Beacons</b>	<b>Sandy Lee</b>

# 2008-2009 MGLSC Chapter Rosters

## Alpha Kappa #4401

**President: Cyndi Malow**  
**Vice-President: Jean Varga**  
**Secretary: Joann Zaleski**  
**Treasurer: Jessica Iloff**  
**Educational Chair: Kellie Hammers**

Michelle Doherty	240 Draper	Pontiac, MI 48341	H: 248-738-5828 <a href="mailto:Dohertymj@att.net">Dohertymj@att.net</a>
Janet Gardocki	48429 Lindon Ct. Birthday: July 7	Shelby Twp., MI 48317	H: 586-731-3691 <a href="mailto:jgardocki@wowway.com">jgardocki@wowway.com</a>
Jean Hall	Sanctuary at Bellbrook Birthday: June 10	Rochester Hills, MI 48307 873 W. Avon Rd.	C: 248-230-4252
Kellie Hammers	22353 Military Birthday: Sept 16	Dearborn, MI 48124	H: 313-701-1484 <a href="mailto:kellie.hammers@gmail.com">kellie.hammers@gmail.com</a>
Phyllis Hocking	1900 Somerset Blvd. #102	Troy, MI 48084	H: 248-822-5099 <a href="mailto:pahocking@aol.com">pahocking@aol.com</a>
Heather Hoey	31760 Mayfair Lane Birthday: Nov 8	Beverly Hills, MI 48025	C: 248-921-6298 <a href="mailto:hahoey@comcast.net">hahoey@comcast.net</a>
Cyndi Malow	8811 George F. Bunker Birthday: Sept 2	Sterling Heights, MI 48313	H: 586-739-7656 <a href="mailto:cmalow@wowway.com">cmalow@wowway.com</a>
Mandy Reinke	24190 Sherman Birthday: Aug 18	Oak Park, MI 48237	H: 248-399-9053 C: 248-224-0067 <a href="mailto:mandyreinke@sbcglobal.net">mandyreinke@sbcglobal.net</a>
Jessica Iloff	3066 Catalpa Birthday: Oct 7	Berkley, MI 48072	H: 248-544-6166 <a href="mailto:berkeleygirl@gmail.com">berkeleygirl@gmail.com</a>
Jean Varga	6735 Chianti Court	Shelby Twp., MI 48316	H: 586-677-3422 C: 586-457-7519 <a href="mailto:jvarga@comcast.net">jvarga@comcast.net</a>
Cathy Yallum	19883 Barchester Dr. Birthday: Mar 14	Macomb, MI 48044	H: 586-228-4708 <a href="mailto:Cyallum@combridgefs.com">Cyallum@combridgefs.com</a>
Joann Zaleski	47405 Alliance Court Birthday: July 7	Shelby Twp., MI 48315	H: 586-739-3691 <a href="mailto:chetzal@ameritech.net">chetzal@ameritech.net</a>

## Alpha Lambda #4459

Kay Mayer                      4191 Wabaningo                      Okemos, MI 48864                      H: 517-349-1814  
C: 517-285-9199  
[kathrynmayer@hotmail.com](mailto:kathrynmayer@hotmail.com)

## Alpha XI #0505

Helen Crawford                      3084 South Blvd. W.                      Rochester Hills, MI 48309-4058                      H: 248-852-2066  
Barbara Hohman                      41130 Fox Run Rd.                      Novi, MI 48377                      H: 248-926-3993  
Dorothy Smith                      21300 Archwood Circle, A204                      Farmington Hills, MI 48336                      H: 248-427-1230  
[TheMichMom@aol.com](mailto:TheMichMom@aol.com)

## Beta Omega #4311

**President: Dena Nault**  
**Vice President: Rhetta Green**  
**Secretary: Barbara Hogbin**  
**Treasurer: Edie Smith**  
**Educational Director: Sue Schultz**

Retta Green                      3172 S. Center Rd.                      Burton, MI 48519                      H: 810-742-1949  
[rgw8uau@usol.com](mailto:rgw8uau@usol.com)  
Barbara Hogbin                      3771 Fox Chase                      Dryden, MI 48428                      H: 810-796-9415  
W: 810-628-4801  
[Lillbobbie@yahoo.com](mailto:Lillbobbie@yahoo.com)  
Sandra Lee                      9521 Weeping Cherry Ct.                      Davison, MI 48423                      H: 810-653-2855  
C: 810-955-5033  
[SJLee46@charter.net](mailto:SJLee46@charter.net)  
Dena Nault                      10442 Stanley Rd.                      Flushing, MI 48433                      H: 810-659-1255  
[denanault@yahoo.com](mailto:denanault@yahoo.com)  
Sue Schultz                      11083 Duffield Rd.                      Montrose, MI 48457                      H: 810-639-2705  
Edie Smith                      3221 Shaw                      Burton, MI 48529                      H: 810-742-5597  
Peggy Zuehlk                      5433 Vermilya Rd.                      Columbiaville, MI 48421                      H: 810-793-5984  
C: 810-614-3938  
[pzuehlk@yahoo.com](mailto:pzuehlk@yahoo.com)

## Beta Rho #4290

**President/Secretary/Treasurer: Georgene Farr**

**Educational Director: Joanne Larson**

Lois Byrd (Marlyn)	230 Flag Point Drive	Roscommon, MI 48653	H: 989-821-6345 <a href="mailto:lwbyrd@excite.com">lwbyrd@excite.com</a>
Georgene Farr (Jim)	34232 Greentrees Birthday: Nov 16	Sterling Heights, MI 48312	H: 586-268-4227 <a href="mailto:Farrhawley@aol.com">Farrhawley@aol.com</a>
Joanne Larson	3500 South Blvd., Ste B24	Rochester, MI 48309	H: 248-853-5129
Jan Wall (Doug)	195 5 <sup>th</sup> Street	Bonita Springs, FL 34134	H: 239-498-4619 <a href="mailto:wallradon@comcast.net">wallradon@comcast.net</a>

## Beta Sigma #4447

**President: Ginny Lambert**

**Secretary/Treasurer: Jan Colmus**

Jan Colmus (Richard)	5912 McGrandy	Bridgeport, MI 48722	989-777-2978 <a href="mailto:janandick@earthlink.net">janandick@earthlink.net</a>
Ginny Lambert	725 Caravelle	Saginaw, MI 48604	989-752-5229 <a href="mailto:ginny.lambert@sbcglobal.net">ginny.lambert@sbcglobal.net</a>

## Delta Rho #4547

**President: Clata Raines**

**Vice President: Stephanie Krumbach**

**Secretary: Liz Carls**

**Treasurer: Jean Dolley**

**Parliamentarian: Harriette Dunckel**

**Educational Director: Stephanie Krumbach**

**Membership: Norma Baker**

Ruth Annand	1769 Chamberlain Way	Haslett, MI 48840	H: 517-339-5365 <a href="mailto:ruthannand@sbcglobal.net">ruthannand@sbcglobal.net</a>
Brenda Arnoczky	1819 Culver Hill Dr.	Williamston, MI 48895	H: 517-655-5207
Norma Baker	1945 Noble Rd.	Williamston, MI 48895	H: 517-655-1942 <a href="mailto:froggiergarden@cs.com">froggiergarden@cs.com</a>
Rhonda Baker	2240 Williamston Rd.	Williamston, MI 48895	H: 517-655-1403 <a href="mailto:Rhonda2240@yahoo.com">Rhonda2240@yahoo.com</a>

Liz Carls		2066 Meech Rd. Williamston, MI 48895	H: 517-655-3802 C: 517-281-1451
		<a href="mailto:carlscm@msn.com">carlscm@msn.com</a>	
Susan Cook	600 E. Middle St.	Williamston, MI 48895	H: 517-204-0752
		<a href="mailto:SugarMomma829@aol.com">SugarMomma829@aol.com</a>	
Jean Dolley	705 Williams St.	Williamston, MI 48895	H: 517-803-2632
		<a href="mailto:jeandol@cablespeed.com">jeandol@cablespeed.com</a>	
Maggie Dorn	4291 Jabour Ct.	Tarawa Terrace, NC 20543	C: 517-410-1504
		<a href="mailto:Ami2786@yahoo.com">Ami2786@yahoo.com</a>	
Harriette Dunckel	120 E. South St.	Williamston, MI 48895	H: 517-655-2549
Joyce Farhat	2311 E. Holt Rd.	Williamston, MI 48895	H: 517-655-8133
Janie Ganton	3460 Corwin Rd., Apt. 1230	Williamston, MI 48895	H: 517-655-4760 C: 810-919-1932
		<a href="mailto:janieganton@hotmail.com">janieganton@hotmail.com</a>	
Nancy Irvine	4030 Beeman Rd.	Williamston, MI 48895	C: 517-202-6362
		<a href="mailto:Vine4030@cablespeed.com">Vine4030@cablespeed.com</a>	
Christine Knapp	1950 Creek Landing	Haslett, MI 48840	H: 517-575-0046
		<a href="mailto:Knapprc@comcast.net">Knapprc@comcast.net</a>	
Stephanie Krumbach	967 Southfield Dr.	Williamston, MI 48895	H: 517-655-6133 C: 517-410-3372
		<a href="mailto:Krumbach_sf@elps.k12.mi.us">Krumbach_sf@elps.k12.mi.us</a>	
Sarah Musson	1131 Hillgate Way	Lansing, MI 48912-5012	H: 517-203-0800
		<a href="mailto:sarah@musson.net">sarah@musson.net</a>	
Clata Raines	3355 Linn Rd.	Williamston, MI 48895	H: 517-655-1693
		<a href="mailto:Rocnblumom@yahoo.com">Rocnblumom@yahoo.com</a>	
Margaret Rogers	3400 Corwin Rd., Apt. 1225	Williamston, MI 48895	H: 517-655-9025
Glenna Segall	7008 Soapstone	Lansing, MI 48917	H: 517-507-5868 C: 517-980-0394
		<a href="mailto:glennamglsc@comcast.net">glennamglsc@comcast.net</a>	
Pattie Wieber	110 Grand Rapids Rd.	Houghton Lake, MI 48629	H: 989-422-3668 C: 989-387-4871
		<a href="mailto:jowieber@hotmail.com">jowieber@hotmail.com</a>	
JoAnn Zellar	1798 Harvey Dr.	Williamston, MI 48895	H: 517-655-5582
		<a href="mailto:tjZeller@aol.com">tjZeller@aol.com</a>	

## Lambda Chi #5858

**President: Debbie Sutton**  
**Vice President: Patty Jordan**  
**Secretary: Carol Stephens**  
**Treasurer: Shannon Clements**  
**Educational Director: Lorraine Persh**

Rebecca Callow	11126 Argentine Road Birthday: Jan 13	Linden, MI 48451	H: 810-735-6744 C: 734-216-6313 <a href="mailto:ricallow@gmail.com">ricallow@gmail.com</a>
Shannon Clements	807 Worchester Drive Birthday: Feb 18	Fenton, MI 48430	H: 810-750-3818 C: 810-923-6097 <a href="mailto:shannonclements@charter.net">shannonclements@charter.net</a>
Jean Corey	5185 Cottage Court Birthday: Mar 31	Fenton, MI 48430	H: 810-629-6992 C: 810-287-8934 W: 810-762-3307 <a href="mailto:Jcorey77@aol.com">Jcorey77@aol.com</a>
Patty Jordan	6448 Wildflower Lane Birthday: Sept 21	Brighton, MI 48116	H: 810-494-0023 C: 810-599-4129 W: 734-662-1442 <a href="mailto:Pattyann09@yahoo.com">Pattyann09@yahoo.com</a>
Mimi Kneller	4266 Swarthout Road Birthday: July 5	Pinckney, MI 48169	H: 734-878-0532 C: 734-417-0322 <a href="mailto:Meepers67@charter.net">Meepers67@charter.net</a>
Kathleen Mattice	6123 Aldine	Brighton, MI 48116	H: 810-227-2665 W: 810-231-9199 C: 810-623-0732 <a href="mailto:kathleenmattice@comcast.net">kathleenmattice@comcast.net</a>
Lorraine Persh	1801 Brighton Road Birthday: April 7	Howell, MI 48843	H: 517-376-9191 C: 810-923-7914 W: 248-735-2400 <a href="mailto:llpersh@charter.com">llpersh@charter.com</a>
Carol Stephens	1336 Waverly Drive Birthday: Oct 20	White Lake, MI 48386	H: 248-363-2851 W: 248-340-2240 <a href="mailto:cstephens@guardian.com">cstephens@guardian.com</a>
Debbie Sutton	901 E. Maple Birthday: Dec 4	Holly, MI 48442	C: 810-577-0645 <a href="mailto:Dsutton90@yahoo.com">Dsutton90@yahoo.com</a>
LeAnn Wray	10355 Blaine Road Birthday: Jan 5	Brighton, MI 48114	H: 810-632-7857 C: 810-772-9551 W: 810-227-7712 <a href="mailto:Lwray2@comcast.net">Lwray2@comcast.net</a>

## **Sigma Phi #5450**

Marie Miller                      5261 Harold Dr.                      Flushing, MI 48433                      H:810-732-0277  
[catscove@sbcglobal.net](mailto:catscove@sbcglobal.net)

## **Sigma Tau #4854**

**President: Pat Ludwig**  
**Vice President: Carol Sarnacki**  
**Secretary: Carol DeFranceschi**  
**Treasurer: Pat Ludwig**  
**Educational Director: Carol DeFranceschi**

Carol DeFranceschi                      31599 Merriwood Park Dr.                      Livonia, MI 48152                      H: 248-442-0628  
(Jim)                      Birthday: July 4                      C: 586-484-6453  
[caroldef@msn.com](mailto:caroldef@msn.com)

Pat Ludwig                      22262 Oxford                      Dearborn, MI 48124                      H: 313-274-9084  
                    Birthday: Sept 27                      C: 313-680-4788  
[Happysass@aol.com](mailto:Happysass@aol.com)

Carol Sarnacki (Don)                      13418 Mortenvue                      Taylor, MI 48180                      H: 734-287-2986  
                    Birthday: April 28                      C: 734-778-9296  
[dsarnacki@wideopenwest.com](mailto:dsarnacki@wideopenwest.com)



# **Let's Fire Up With MGLSC's Leadership**

When: Saturday, September 20, 2008

Registration at 9:00 a.m.

Leadership at 9:30 a.m. to 3:00 p.m.

Where: Williamston United Methodist Church,  
Williamston, Michigan

More Information to come.  
You won't want to miss this.  
Bring pledges and guests to get "Fired Up"



**PLEASE KEEP THIS SHEET FOR YOUR INFORMATION!  
BRING IT WITH YOU ON YOUR GRAND DUTCH TREAT!**

Mail the registration form with check payable to MARC Conference 2008 to...

Sandra Lee  
9521 Weeping Cherry Court  
Davison, MI 48423



For questions, contact her at (810) 653-2855

To cancel your Leadership and/or Conference registration, the full amount less a \$10 processing fee will be refunded, provided the request is in writing and postmarked no later than September 18th. A \$25 fee will be assessed on any returned checks.

To ensure the MARC/ESA conference room rate of (\$85.00 + tax, effective, Thursday, October 9 through Sunday, October 12) reservations **MUST** be made by September 10, 2008 via phone call directly to the Grand Rapids Hilton Airport Hotel at (616-957-0100) or by using our Personalized Group Web Page for reservations. Web page address:

<http://www.hilton.com/en/hi/groups/personalized/GRRHIHF-MARC-20081009/index.jhtml>

Reservations will be held until 4:00 p.m. the day of arrival unless guaranteed by a credit card.



If you need transportation from the Gerald R. Ford Grand Rapids Airport, the hotel has a courtesy phone in the Baggage Claim area. To call the hotel directly, dial 616-957-0100.

If you have questions, Lois Byrd, conference co-chairperson, may be reached at 989-821-6345 or at mlbyrd@i2k.com.

**Tentative Schedule of Events**

**Registration Open**

Thursday: 5:00-8:00 pm / Friday: 7:30-9:00 am & 2:00-7:00 pm / Saturday: 7:30-9:00 am

<u>FRIDAY</u>		<u>SATURDAY</u>		<u>SUNDAY</u>	
9:00	Leadership Begins	7:30	Dutch Market Opens	8:30	Memorial Service
Noon	Lunch	8:45	First Assembly	9:00	Brunch
1:30	Leadership Resumes	Noon	Luncheon		
2:45	Dutch Market Set-up	1:30	2nd Assembly		
3:15	Dutch Market Opens	4:00	Church/Mass		
6:15	Dutch Market Closes	3:00	Dutch Market Opens		
7:00	Mixer	5:00	Dutch Market Closes		
		6:00	Social Time		
		6:30	Installation		
		7:00	Banquet		

**DRIVING INSTRUCTIONS**

From I-96: Take 28th Street exit West to second traffic light. Turn right. Airport Hilton is on the left.

From US 131: Take 28th Street exit East to Patterson Avenue. Turn left. Airport Hilton is on the left.

From I-196: Take 28th Street exit East to Paris and turn left. Airport Hilton is on the left.





**PLEASE NOTE:** If you have special dietary needs or are requesting a vegetarian meal plan, please check this blank. \_\_\_\_\_ Type of meal plan needed. \_\_\_\_\_

We will have the Buddy System for seating at the Saturday noon luncheon. Please check here \_\_\_\_\_ if you are interested and provide the following information:

Birthday \_\_\_\_\_ ESA Anniversary \_\_\_\_\_

**Mail Registration Form with Check to:**

**Sandra Lee, Registration Chair  
9521 Weeping Cherry Court  
Davison, MI 48423**

**Registration Deadline, September 10th for Early Bird Rate  
Add \$10 to registration fee from September 11-18th.  
Add \$20 to registration fee after September 18th!**

**Make Checks payable to: *MARC Conference 2008***



*Thank You for registering for "A Grand Dutch Treat"  
October 10-12, 2008  
Grand Rapids Airport Hilton  
Hostesses: Michigan Great Lakes State Council*

~~~~~  
*For Registration Chairperson's Use*

Received \$ \_\_\_\_\_ on \_\_\_\_\_ Check # \_\_\_\_\_  
total amount received date received

REGISTRATION # \_\_\_\_\_

# The Dutch Market

The Dutch Market will be available for your crafts and other fundraising projects. Tables: \$15 per table

|        |                             |              |
|--------|-----------------------------|--------------|
| Hours: | Friday set-up time          | 2:45-3:15 pm |
|        | Friday Dutch Market Hours   | 3:15-6:15 pm |
|        | Saturday Dutch Market Hours | 7:30-8:30 am |
|        |                             | 3:00-5:00 pm |
|        | Saturday take-down time     | 5:00-5:30    |



*The room will be locked during non-Dutch Market hours.*

Dutch Market Registrations must be received by September 30th. Make checks payable to: **MARC Conference 2008.**

Mail to:  
LeAnn Wray, Dutch Market Chairperson  
10355 Blaine Road  
Brighton, MI 48114

*Cut here and return with a check. Thank You!*

~~~~~  
Please reserve \_\_\_\_\_ table(s) at \$15 each for a total of \$ \_\_\_\_\_

Name: \_\_\_\_\_

E-Mail \_\_\_\_\_ Phone \_\_\_\_\_

Description of items to be sold: