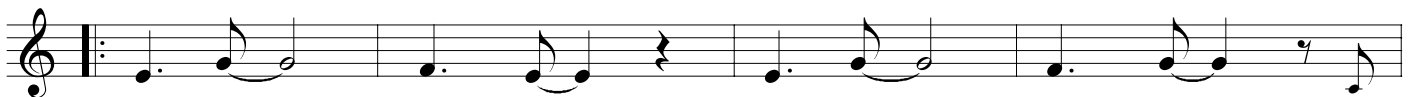
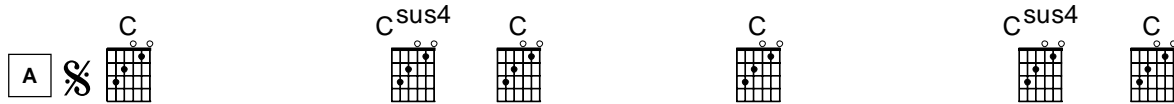


# Welcome In This Place

♩ = 75

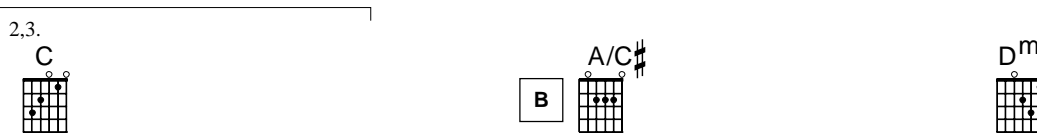
Words and Music by Miriam Webster



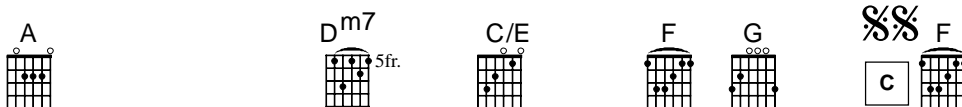
Verse 1: Ho - ly \_\_\_\_\_ Spi - rit. \_\_\_\_\_ Ho - ly \_\_\_\_\_ Spi - rit. \_\_\_\_\_  
 Verse 2: Ho - ly \_\_\_\_\_ Spi - rit, \_\_\_\_\_ sent from \_\_\_\_\_ hea - ven. \_\_\_\_\_ The  
 Verse 3: Clo - sest \_\_\_\_\_ friend, here \_\_\_\_\_ in Your \_\_\_\_\_ pre - sence \_\_\_\_\_ is



Com - for - ter, Coun - sel - lor here. \_\_\_\_\_  
 God of \_\_\_\_\_ all glo - ry \_\_\_\_\_ is here.  
 full - ness \_\_\_\_\_ of joy o - ver - flo



wing. \_\_\_\_\_ Pre Chorus: Rise up wi - thin \_\_\_\_\_ me, Li - ving Wa - ter,



Spi - rit \_\_\_\_\_ of God \_\_\_\_\_ in \_\_\_\_\_ me. \_\_\_\_\_ Chorus: You are wel - come in \_\_\_\_\_ this place. \_\_\_\_\_

G F/A G/B F

— You are wel - come in — this place. — God of po - wer, love — and grace, —

G F G 1. F/A G/B C C sus4 C D

— sa - tu - rate my soul.

2,3. F/A G/B D F G

soul. Chorus 2: You are wel - come in — this place. — You are

F/A G/B F G Last to

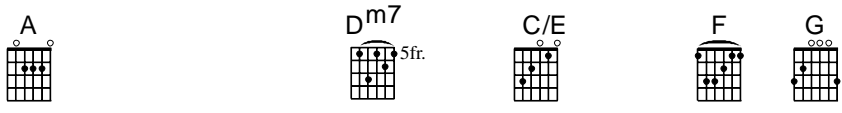
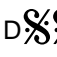
wel - come in — this place. — Ho - ly Spi - rit, guide — my way, — sa - tu -

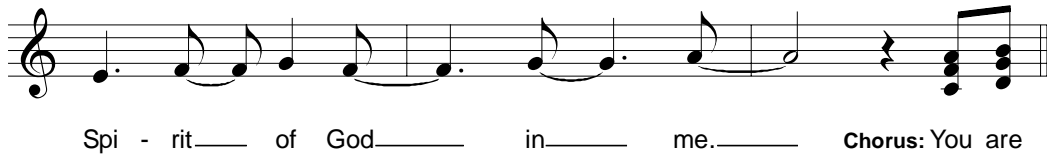
F G F/A G/B E F G

rate my soul. Instrumental:


F/A G/B A/C# Dm Cue Vox F


Pre Chorus 2: Rise up wi - thin — me, Li - ving Wa - ter,



D  al Coda



Spi - rit of God in me. **Chorus:** You are



**G**  Coda



rate my soul. Sa - tu - rate my soul. **PLAY 3 X**

