

FIGURES part 1

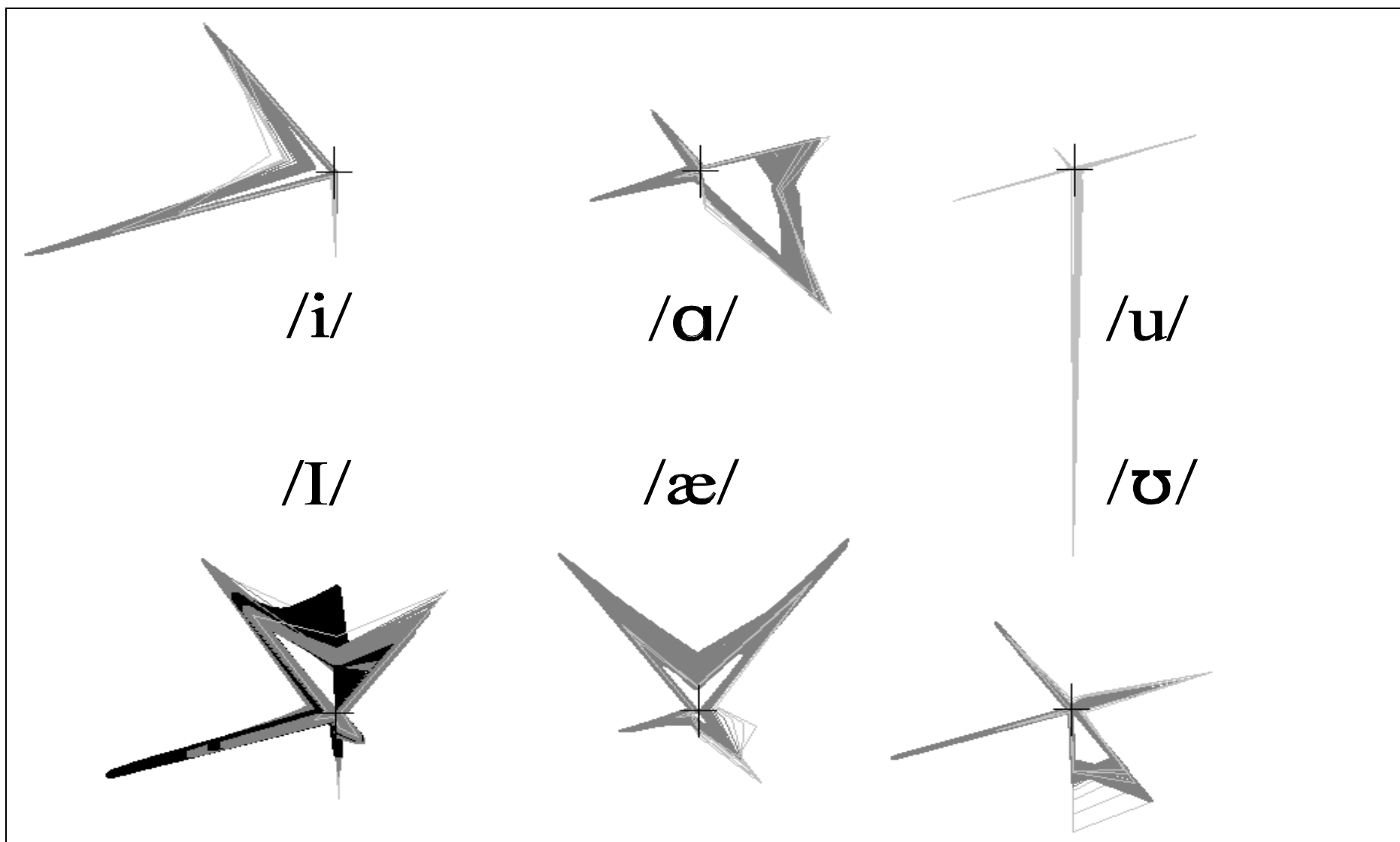
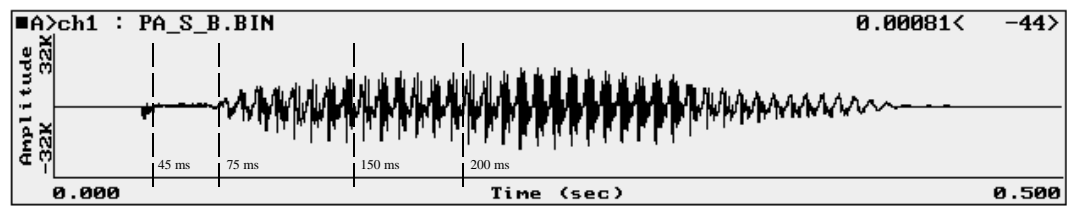
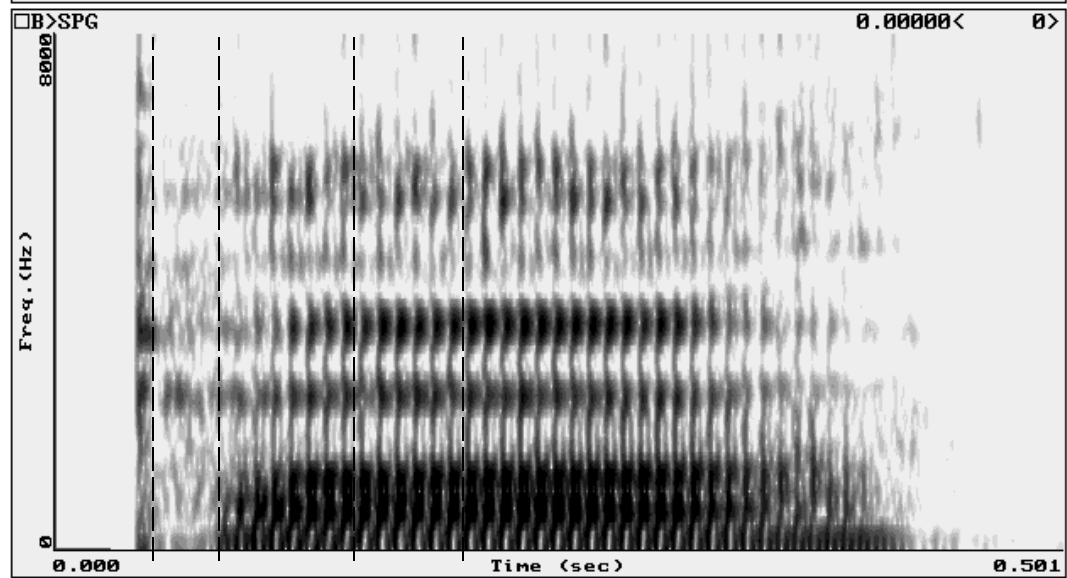


Fig. 5. Spectral decagon sequences of vowel pairs */i/I/*, */a/æ/* and */u/ʊ/* (pairs 1, 2, and 3). Each display shows the vowel at steady state and was at least 330-ms.

(a)



(b)



(c)

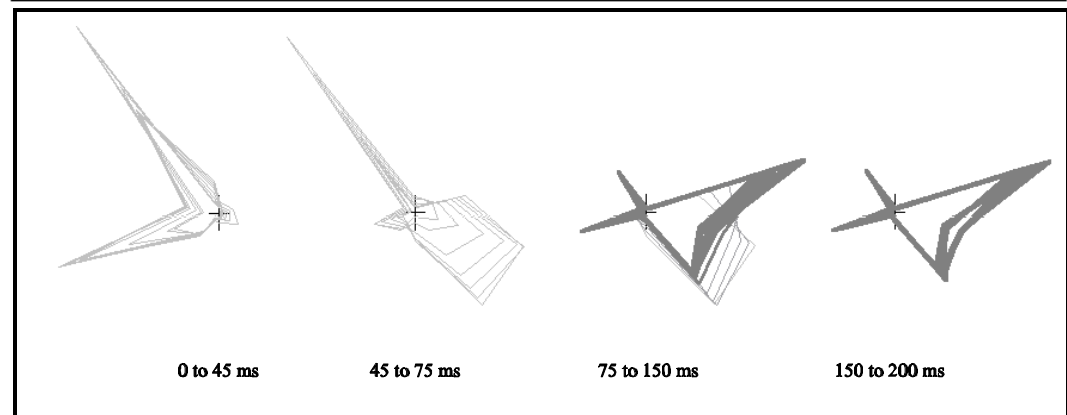
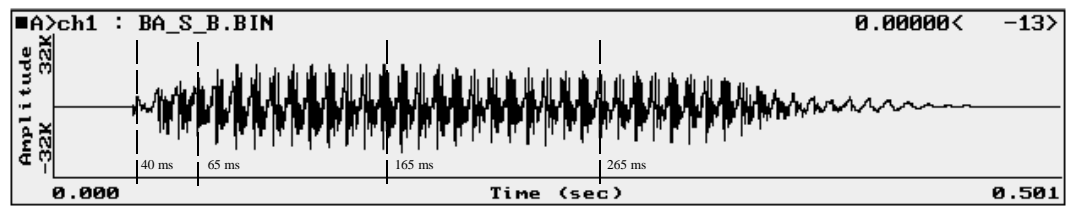
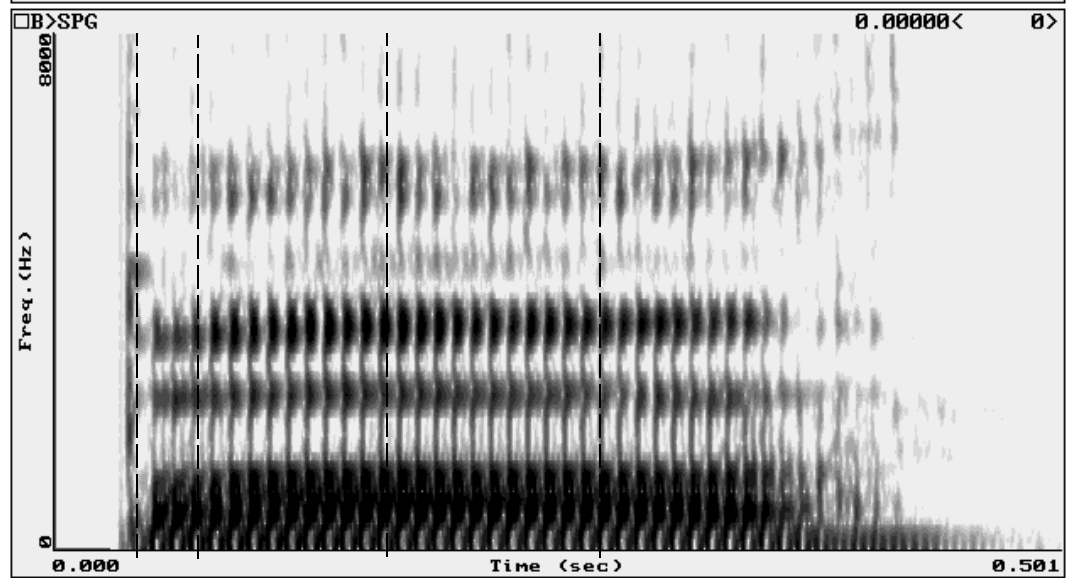


Fig. 6. The /pa/ sound in pairs 4 and 5 displayed as (a) a time signal, (b) a spectrogram, (c) spectral decagons.

(a)



(b)



(c)

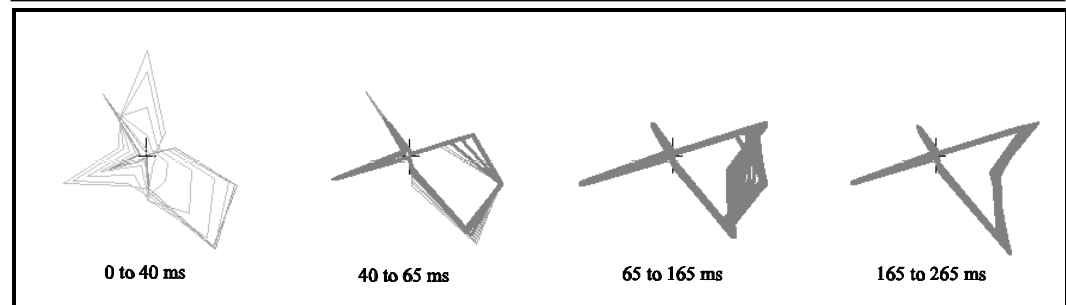


Fig. 7. The /ba/ sound in pairs 4 and 6 displayed as (a) a time signal, (b) a spectrogram, (c) spectral decagons.

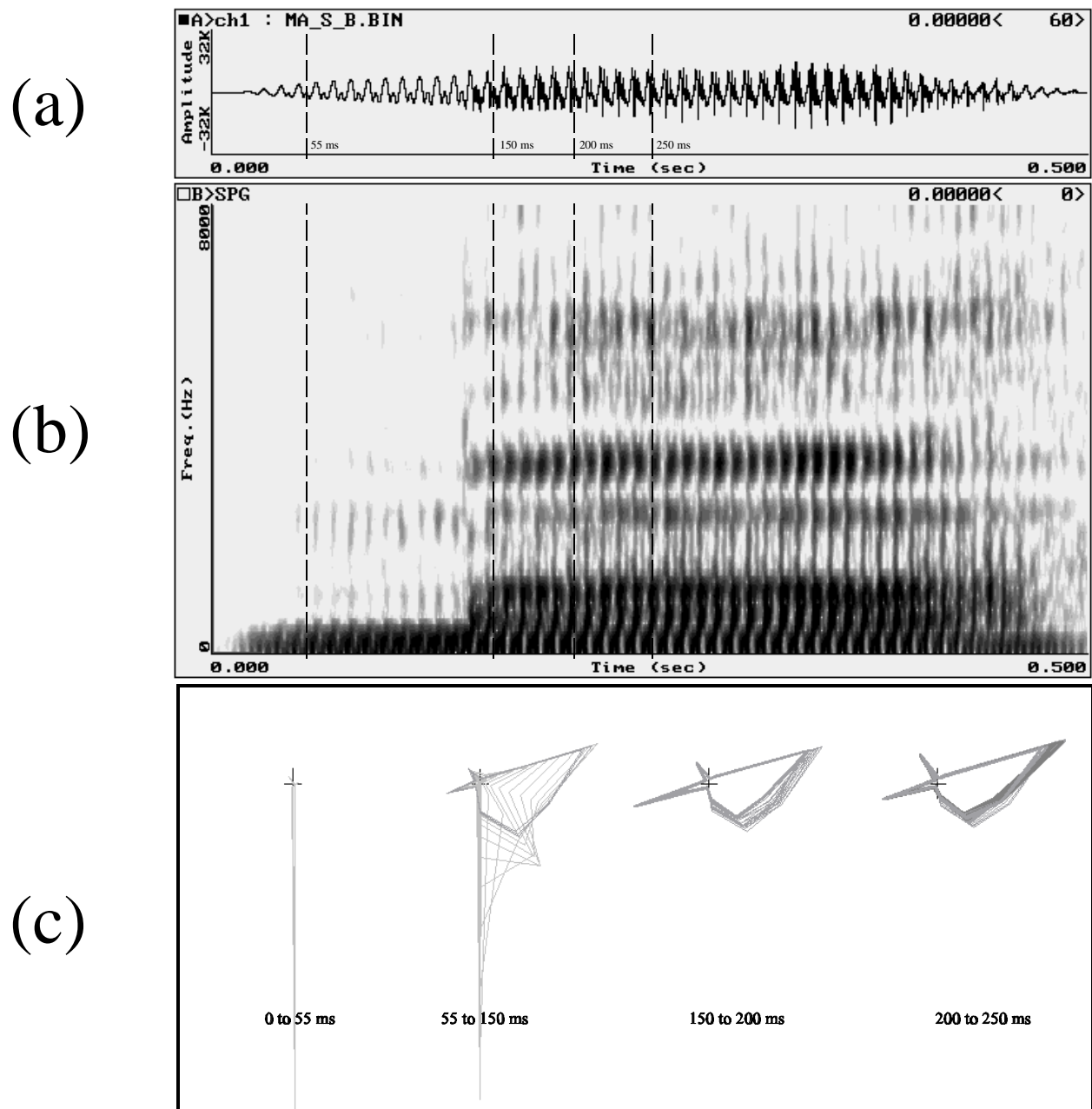


Fig. 8. The /ma/ sound in pairs 5 and 6 displayed as (a) a time signal, (b) a spectrogram, (c) spectral decagons.