



# Elm City Quilters' Guild



March 2007

Cheryl Petreman, editor

## Minutes of the February 5<sup>th</sup> Meeting - Terry Teskey, acting secretary

74 members in attendance

### Program:

Cecile Grant and Joan Baldwin spoke on the history of quilting from as far back as 300 B.C. to the present. Very informative.

### Financial report – Ann Wood, Treasurer

Balance as of February 05, 2007 - \$9,316.05 submitted by Ann Wood

### Library – Kim Day, Librarian

Kim submitted a report appearing in the Feb/March newsletters. She would like a budget to buy new books and is asking for suggestions as to which titles members want. There will also be a raffle of magazine bundles in April – proceeds of which will go to the food bank.

### Retreat – Connie Fullarton

Last minute arrangements... Anyone needing a ride was to see her, 41 paid – 6 not paid

### UFPDs / Workshops – Sandra Noftell

March 17 Machine Quilting – Linda Hubbard → pre-registration with \$20.00 fee is required

March 31 Autumn Splendor Quilt - Ann & Don Coles → \$10.00 Class is full with a waiting list.

April 20 & 21 Mini-Retreat at the Masonic Hall

**Fat Quarter Draw:** Ann Fullarton

**Name Tag Draw:** Jeannita Robinson

### Charity – Jennifer Speedy

Looking for 15 more maple leaf blocks for the Canadian Comfort and Remembrance Project. The applique/paper pieced pattern is at [http://www.picketfencefabrics.com/PFF\\_CCRP.htm](http://www.picketfencefabrics.com/PFF_CCRP.htm)

### Editor's Note:

A special thank-you gift was given to Terry Teskey for January's program, her service to the guild (4 years treasurer, 4 years secretary, 2 years program committee) and her generous donations of fabric throughout the years. We hope she's enjoying retirement...

### Programs:

|       |                                      |
|-------|--------------------------------------|
| Mar 5 | Learning Stations                    |
| Apr 2 | Quilters Profile                     |
| May 7 | Fabric Selection - Christine Burrill |
| Jun 4 | Pot luck                             |

### Membership Reminder

Membership dues are always collected at the April & May meetings. Be sure to register early so that somebody from the waiting list doesn't get YOUR SPOT!

## Quilt Shows

Apr 20-22 **Creativ Festival** Mississauga, ON  
[http://www.csnf.com/s07\\_index.html](http://www.csnf.com/s07_index.html)

May 2- 6 The **Marco Polo Quilters' Guild Saint John YMCA-YWCA Quilt Fair** will be held at the New Brunswick Museum in Saint John. While the Quilt Fair is on, a selection of quilts from the Cory collection will also be on display.

June 29 – July 1 **Vermont Quilt Festival**  
Essex Junction, Vermont <http://www.vqf.org>

July 1 – 2 **Lupin Quilt and Craft Fair** Port Elgin, NB

July 12 - 14 **Quoddy Quilts 2007**  
Anglican Church Hall, 88 King St. St. Andrews, NB.  
Th 2-8, Fri 10-8, Sat 10-5. Raffle Quilt, Shop Hop, boutique, merchant mall, tearoom. Adm \$3.

July 27- 29 **Maine Quilts 2007** (30<sup>th</sup> year)  
Augusta, Maine <http://www.mainequilts.org>

Aug 3 – 4 **13th Annual Show and Sale**  
Pictou, NS

August 4-7 **Lower Cape Quilt Show and Sale**

## Library

*Kimberly Day, Librarian*

In the year 2005-2006 the guild spent approx \$900 on new books for the library. These books have been well received and enjoyed by many members.

The library is proposing that between Feb.- Apr. we take suggestions for new book titles.

The library is also requesting a budget for the purpose of purchasing some of these new books.

## April Magazine Draw

Due to low circulation, the library will no longer subscribe to any magazines. The binders have been cleaned out and bundled into 20 prizes.

At the April meeting, one raffle ticket will be given in exchange for each donation of a non-perishable food item or \$1.

A great way to help out the FOOD BANK!

## Quilter's Blessings

May your needle always thread on the first try.

May your bobbin be fully wound.

May your cutting mat never warp.

May your mind remain as sharp as your rotary blade.

May your quarters always be fat and your nickels 5 inches square.

May you not run out of fabric before you've finished the borders.

May you always find the perfect colour to match your current project in your stash.

May your husband never discover how much fabric you REALLY have.

May your backing and batting always be larger than your top.

May your strips and strings be straight and true.

May your ruler have lines and numbers that have not rubbed off.

May your iron be hot and your seams flat.

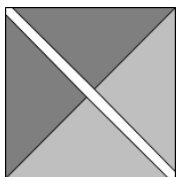
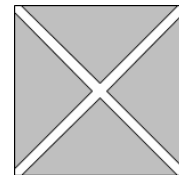
May your cat never shed on your quilt.

May the people who receive your quilts as gifts not notice all of the dog hair.



## Mystery Quilt Part 5: Assembly - Cheryl Petreman

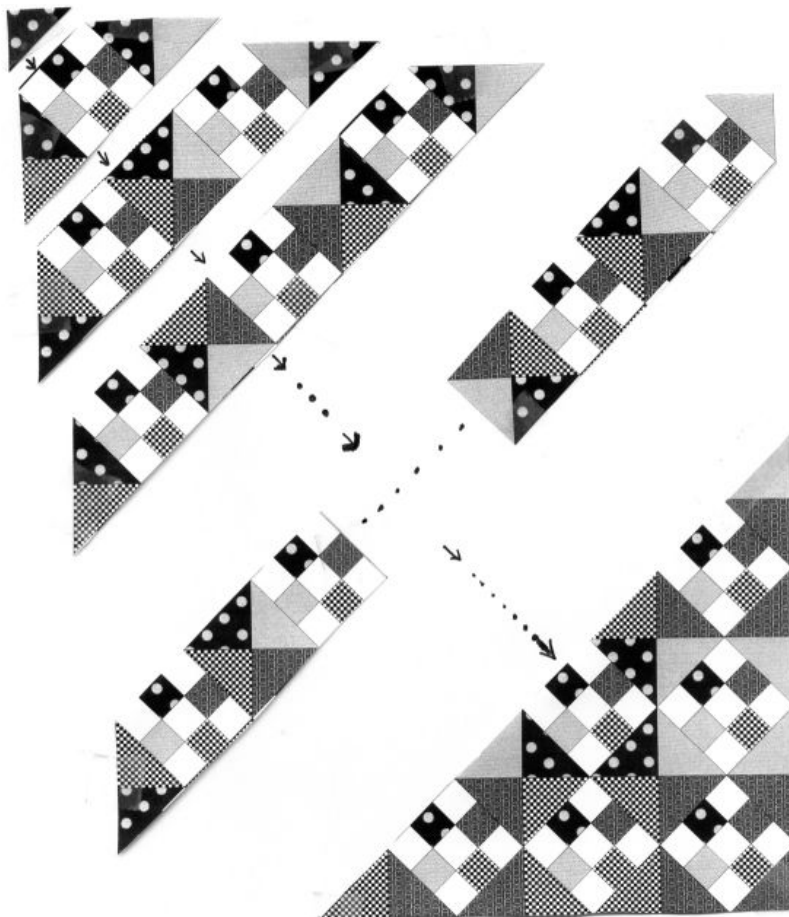
Take the 6" square(s) put aside in Part 3 and cut into 4 triangles by slicing along each diagonal. These will be the corner setting triangles of your quilt.



Take the HSTs put aside in Part 3 and square them up to 5.5" blocks. Cut them into 2 triangles each by slicing along the diagonal. These will be the side setting triangles of your quilt.

Referring to the diagram of the finished quilt, arrange the setting triangles, 9-Patch & Hourglass blocks on a flat surface. Sew each diagonal row and then sewing the rows together as shown.

Counting only the 9-Patch blocks, a crib quilt has 4 across by 6 down, a double has 8 by 12 and a queen has 12 by 15.



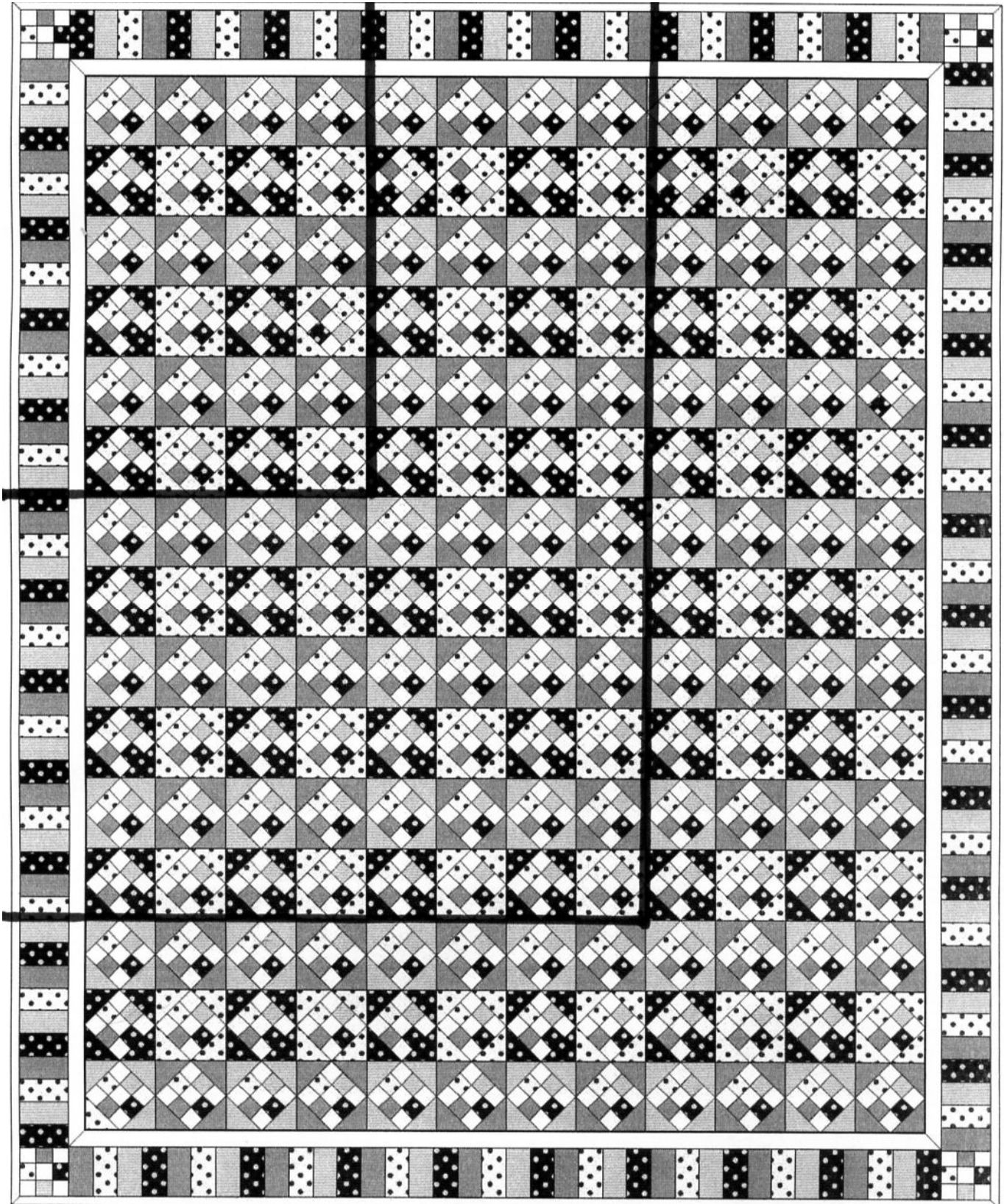
The remaining 2" strips of background fabric cut in Part 1, are used as the first border of the quilt. Be very CAREFUL not to stretch the sides – the side setting triangles have a bias (stretchy) edge. Lay the quilt out on a flat surface, right side up. Lay the border on top of the quilt, right side down. Use pins every 6 – 8 inches. Sew the border on with the quilt on the bottom (your feed dogs will help to gather in any fullness).

Sew the Rail Fence blocks together to form the 2<sup>nd</sup> border. If it ends up too long, re sew a few of the seams with a wider seam-allowance or cut off a bit of the first & last blocks – there are NO quilt police!!

The remaining 4 Nine-Patch blocks are used in the corners of the quilt.

Note: A few colour variations are displayed at <http://www.thisbe.org/gallery/v/cheryl/mystery>

# Mystery Quilt Revealed!



If you are able, please send a JPEG picture of your completed quilt to [cherylp@nb.sympatico.ca](mailto:cherylp@nb.sympatico.ca)