

Add Precision Digital Filtering to your **Audio** Design!

Quickfilter Technologies introduces first application-specific development board, simplifying the development of **audio filtering**



Quickfilter's QF1D512 SavFIR[™] (Simple and versatile FIR engine) chip easily adds precision filtering to a number of **audio applications**, including equalizers and crossovers used for sound shaping in speakers, headphones and headsets.

QF1D512 – Audio Mojo as a standalone evaluation tool:

When used in a standalone mode, the Audio-Mojo board requires just a 5V external power supply. The user provides an analog input source(s). The filtered responses can then be monitored at the analog outputs. The same hardware can be used to split a single input into two frequency-separated channels, e.g. an audio crossover, or as a two-channel equalizer. Two sets of example filters are stored in non-volatile memory on the Audio-Mojo to illustrate both modes of operation.

QF1D512 – Audio Mojo as an add-on to the QF1D512-DK Development Kit

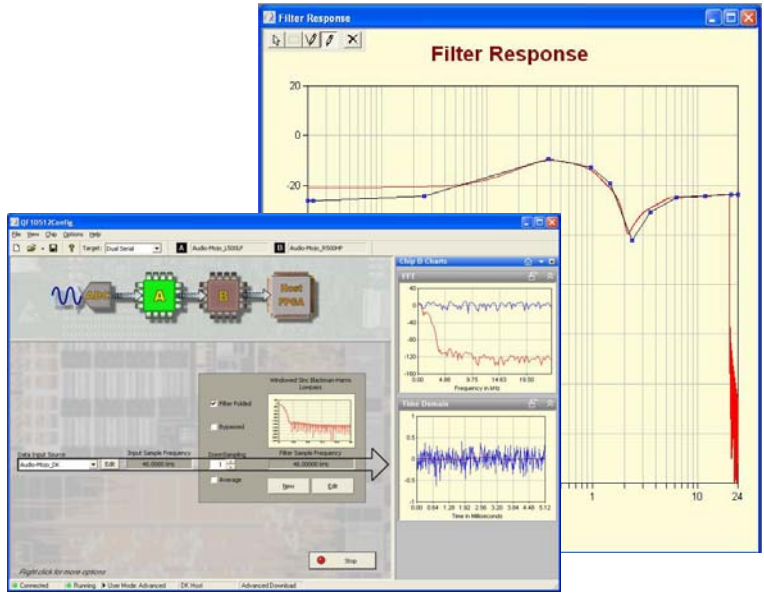
The Audio-Mojo can be plugged onto the QF1D512-DK Development Kit to allow viewing of filter performance as well as to edit or create new filter responses. Once the filters are designed to the user's satisfaction, they can be downloaded into non-volatile memory on the Audio-Mojo board.





QF1D512 Development Kit – a complete software & hardware solution for your audio applications!

The **QF1D512** can be used to provide filtering for a wide variety of different ADC types and host controllers. Use the chip in series with your ADC, or as a co-processor. Explore all the options with the **QF1D512-DK Development Kit**.



Quickfilter Pro Screen Shots

Development Board

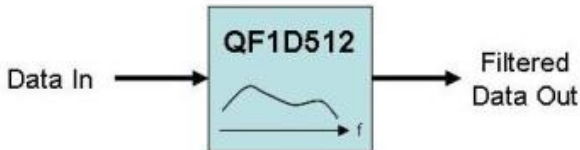
- Powered via USB
- All cables included
- 2 QF1D512 chips on board (supports multi-channel or daisy-chained applications)
- Prototyping area
- Expansion connectors for additional ADC types.
- Expansion connectors for connection to your host controller

Quickfilter Pro Software

- Filter design
 - Parks-McClellan & Windows Sync algorithms
 - Lowpass, highpass, bandpass, notch filter types
- Chip configuration
- Board configuration, control and FFT display

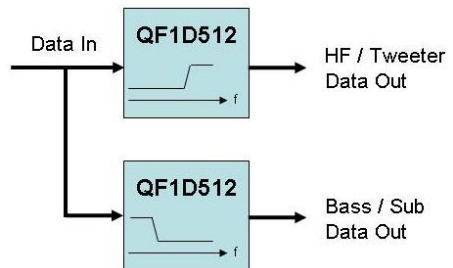
QF1D512 Audio Applications:

Equalizer



- Use single device with optimized "shape" for the whole band
 - Use Number of Taps to implement variable delay

Crossover



- Connect as many chips as needed to sub-divide band