

portfolio.

1996 2002

3 **design 1.**

desplorado

digital grit

natatorium

18 **design 2.**

UNI company headquarters

inside/outside

23 **web graphics.**

24 **resumé.**



desplobado: the uninhabited land

Premise The project is a lodge for visitors to Big Bend National Park in Texas. The site is located in the **Chisos Mountains**, an intriguing landform whose basin measures 3 miles across. Mountains surround approximately 340°, leaving a **spectacular opening** known as the “window.”

The rugged terrain is harsh, but the constant sun makes it an **ideal place** for collecting solar energy. In addition, the surrounding mountains and high elevation buffer the temperature. Even though it is located in the **Chihuahua desert**, the temperature ranges from 32° in winter to only 100° degrees in summer.

desplobado.

Design Objectives:

1. To take cues from the **feeling of enclosure** provided by the Chisos mountains to provide spaces that draw on this phenomenon.
2. To design with awareness of the desert sun, the necessity for shade, and the sun's capacity to passively heat a thermal mass.

SUMMER SUN ANGLE



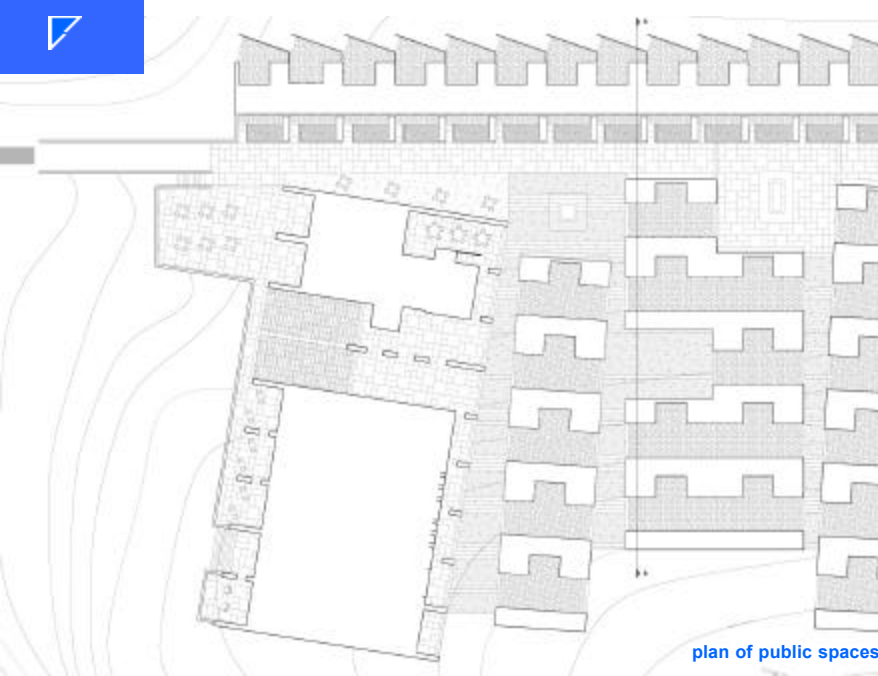
FALL AND SPRING SUN ANGLE



WINTER SUN ANGLE



desplobado



plan of public spaces

Product The design provides increasing levels of **enclosure**, enabling the mediation of scales, while **facilitating interaction** between site and architecture. Levels of enclosure can be personally **engaged** through operable doors and sliding panels, allowing visitors to achieve their desired levels of interaction.

On a larger scale the complex reads as a **form in the landscape**, giving it presence within the large framework of the surrounding Chisos mountains.

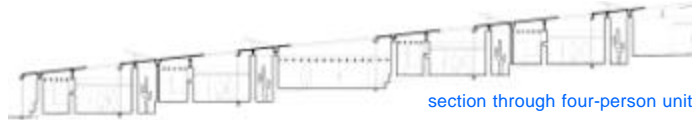
PUBLIC SPACE



SEMI-PUBLIC SPACE



PRIVATE SPACE



section through four-person units



[printable version](#)

objective

An opportunity to be an asset to my employer while gaining professional architectural experience in a design-oriented firm.

education

Master of Architecture, *Pending Graduation April 2002*
University of Michigan, Ann Arbor, Michigan

2000 – 2002

Bachelor of Art in Architecture, *Summa Cum Laude*
Miami University, Oxford, Ohio

1996 – 2000

resumé.

experience

Designer, Cityscape Architects, Inc., Farmington, Michigan. Conceptual and schematic design and drafting for specialty retail, commercial, and municipal work. Created presentation drawings. Aided in production of construction documents. Interacted with clients and attended meetings. Designed, implemented, and maintained company website.

May –Aug. 2001
+
May –Aug. 2000

Architectural Intern, Schonsheck, Inc., Wixom, Michigan. Used AutoCAD R14 to draft plans and elevations. Created presentation drawings for clients using computer and marker rendering techniques. Developed two prototype interior finish schedules including material and color choices.

Jun. –Aug. 1999

Volunteer, Over-the-Rhine Housing Network, Cincinnati, Ohio. (*A Non-Profit Organization that provides housing for low-income families.*) Designed floor plan layout for three-family apartment complex. Worked on single-family residence renovation.

Aug. –Dec. 1998

