

Make Better Decisions – *Faster*

[Industry Solutions](#) |
 [Products](#) |
 [Services](#) |
 [Training](#) |
 [Academic](#) |
 [International](#) |
 [About Us](#)



[Product Home](#) [Features](#) [Tech Specs](#) [Support](#) [Training](#)
[Heathcare Home](#) [Healthcare Simulation Topics](#) [Services](#) [Applications and Products](#)

MedModel - The Industry Standard for Healthcare Simulations

Used by more hospitals than all other general simulation packages combined!.

MedModel is a simulation tool designed specifically for the healthcare industry. MedModel is used in the evaluation, planning and redesign of hospitals, clinics, and other healthcare systems. In the hands of a trained and experienced analyst, MedModel models can be used to identify inefficiencies in an existing process and test a variety of scenarios. The animation and graphic output results show the behavior of your system under any set of circumstances.

Typical applications of MedModel include:

- Department specific productivity improvement
- Facilities design (labs, clinics, radiology, ER's, OR's, etc.)
- Planning for future changes
- Staff planning
- Analyzing patient capacity
- Equipment planning and logistical analysis
- Evaluate the impact of HIPAA, JCAHO and other changes
- Emergency preparedness
- Bed capacity management

MedModel-based Solutions are successfully used by some of the world's leading healthcare organizations including Health System, Deaconess – Evansville, HCA, Intermountain Health Care, The Mayo Clinic, MD Anderson, Miami V

For more information about our Healthcare Solutions please call 877-333-4499 or email [healthcaresol](#)

Sales: (800) 719-4972 • Training Services: (888) 700-7060 • Customer Support: (888) 776-6633 • Fax

© 1996-2006 ProModel Corporation. All Rights Reserved.

Make Better Decisions – *Faster*

Industry Solutions | Products | Services | Training | Academic | International
| About Us

MedModel

Product Home Features Tech Specs Support Training
Heathcare Home Healthcare Simulation Topics Services Applications and Products

MedModel Features

- Intuitive modeling interface.
- Develop "what if" scenarios quickly: minimize risk.
- Easily import and analyze data, with exportable results in Microsoft® Excel™ format.
- Captures system randomness and variability by utilizing over 20 statistical-distribution types, or directly import your
- Distribution of models to other divisions and departments with run-time licensing.

The following tools and services are included to maximize your success.

- [SimRunner](#) Optimization Software
- [Stat:Fit](#) Statistics Package
- [3-day introductory training class](#)
- One year free technical support and product upgrades
- Priority on consulting and training services
- Special discounts
- 24/7 technical support
- Access to our "Solutions Cafe"

The ProModel VAO predictive technology gives us the ability to create customized front-end and back-end interface: with MedModel.

Using Microsoft Visual Basic (or any other ActiveX-enabled language), we can add capabilities including:

- Customized user interface with table inputs
- Custom-designed parameter screens
- Automatic model creation from external data sources (e.g. Excel spreadsheets, databases, or ASCII text files)
- Software execution from another application

MedModel is the most powerful tool for achieving rapid healthcare performance improvement. Please contact us to s simulationists can help you build custom solutions using MedModel VAO technology.

For more information about our Healthcare Solutions please call 877-333-4499 or email [healthcaresol](#)

Sales: (800) 719-4972 • Training Services: (888) 700-7060 • Customer Support: (888) 776-6633 • Fax

© 1996-2006 ProModel Corporation. All Rights Reserved.

Make Better Decisions – *Faster*

[Industry Solutions](#) |
 [Products](#) |
 [Services](#) |
 [Training](#) |
 [Academic](#) |
 [International](#) |
 [About Us](#)

MedModel

[Product Home](#) [Features](#) [Tech Specs](#) [Support](#) [Training](#)
[Heathcare Home](#) [Healthcare Simulation Topics](#) [Services](#) [Applications and Products](#)

Platform

MedModel is a Windows desktop application. There are no plans for Mac or Unix/Linux versions.

Hardware Requirements

| | Minimum | Recommended |
|-------------------------|---|--|
| Processor | Pentium 3 - 800 MHz or better | Pentium 4 or better |
| Memory | 512 MB RAM | 1 GB RAM |
| Operating System | Windows 98 SE or higher | Windows XP, 2000 |
| Video | SVGA Monitor (1024 x 768 x 16 bit color) | SVGA Monitor (1280 x 1024 x 32 bit color) |
| Other Hardware | 200 MB free disk space CD ROM Mouse | 1 GB free disk space CD ROM Mouse Sound card Internet access |

For more information about our Healthcare Solutions please call 877-333-4499 or email healthcaresolutions@promodel.com

Sales: (800) 719-4972 • Training Services: (888) 700-7060 • Customer Support: (888) 776-6633 • Fax

© 1996-2006 ProModel Corporation. All Rights Reserved.

Make Better Decisions – *Faster*

Industry Solutions | Products | Services | Training | Academic | International
| About Us

MedModel

Product Home Features Tech Specs Support Training
Heathcare Home Healthcare Simulation Topics Services Applications and Products

MedModel is the most powerful tool for achieving rapid healthcare performance improvement. Please contact us to solution providers can help you build custom solutions using MedModel VAO technology.

- Baylor Medical Center
- Baystate Medical Center
 - Baystate ED
 - Baystate OR
- ER One Institute
 - Project ER One
- HCA Hospitals
- Lancaster Health Alliance
- Medical Center of Central Georgia
- Miami Valley Hospital
 - Miami Valley ED
- St. Luke's Episcopal Health System
 - St Luke's
- Stanford Medical Center
- VHA Hospitals
- Deaconess Hospital - Evansville
- Intermountain Healthcare (IHC)
- MD Anderson
- Miami Valley Hospital
 - Miami Valley Maternity Ward Case
- University of Virginia Medical Center
- Providence St. Vincent
 - Providence St. Vincent
- St. John Health System
 - St John
- VHA Hospital
- Texas Children's Hospital
- Seattle Children's Hospital
- Mayo Clinic
- Gaston Memorial

For more information about our Healthcare Solutions please call 877-333-4499 or email healthcaresolutions@promodel.com

Sales: (800) 719-4972 • Training Services: (888) 700-7060 • Customer Support: (888) 776-6633 • Fax

© 1996-2006 ProModel Corporation. All Rights Reserved.

Make Better Decisions – *Faster*

| [Industry Solutions](#) | [Products](#) | [Services](#) | [Training](#) | [Academic](#) | [International](#) |
| [About Us](#) |

Training

[Training Home](#)

[Training Classes](#)

[Online Courses](#)

[Training Evaluation Form](#)

ProModel Online Training

We currently offer online (WebEx) training classes for Process Simulator. These courses are available as a one day course version for \$400. These are live, instructor led, interactive trainings.

Process Simulator Basics

This introductory class teaches how to effectively use Process Simulator, our Visio based simulation tool. Attendees will build new models, add simulation properties to existing Visio flowcharts, define and run multiple scenarios to determine and analyze process performance by viewing summary statistics, bar charts, histograms, and time-series graphs of key performance indicators.

Please contact Christine Bunker for scheduling information (**801-223-4601**), or cbunker@promodel.com.

[Sign up for our FREE Training Webinars!](#)

Sales: (800) 719-4972 • Training Services: (888) 700-7060 • Customer Support: (888) 776-6633 • Fax

© 1996-2006 ProModel Corporation. All Rights Reserved.

Make Better Decisions – *Faster*

Industry Solutions | Products | Services | Training | Academic | International
| About Us

Training

Training Home

Training Classes

Online Courses

Training Evaluation Form




ProModel is pleased to announce a new series of Webinars. Our next webinar will be held Friday


These FREE 30 minute training sessions will be held on the second of each month. We hope that these instructional sessions will help you grow in your knowledge and power of ProModel.

 If you are interested in listening to previously recorded webinars, please visit the webinar page in our software at <http://www.promodel.com/solutionscape/webinars/>





October Topic:

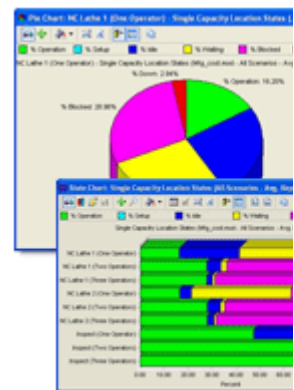
 **Getting the most out of Output Viewer 3DR.** ProModel, MedModel, ServiceModel, and Process Simulator all share a common output viewer, Output Viewer 3DR. “3DR” quickly and easily charts, graphs, and displays your simulation data. We will share tips and tricks for better data analysis and presentations.

This Webinar will be held at 12 noon EDT (9 am PDT), Friday October 13

 **Register Now:** Please visit our website: www.promodel.com/services/training/webinars/.

Other upcoming topics:

-  Modeling Overhead Conveyors with Arrays
-  Advance Use of Arrival Cycles
-  Optimization
-  Getting the most out of Visio®



We want to hear from you! If you have a hot technique you want to share, or want instruction on a given topic, send us an email at support@promodel.com and we'll schedule it in to an upcoming session (support@promodel.com).

October Registration

Register Now!

Just send us the following information and you'll receive an email with meeting connection information.

This information is for ProModel use only and will not be given to any person or company not associated with ProModel.

First Name

Last Name

Company

Email

Address

Phone Number

Webinar Desired

Select

Please use the area below to make any additional comments or questions.

SUBMIT

Sales: (800) 719-4972 • Training Services: (888) 700-7060 • Customer Support: (888) 776-6633 • Fax

© 1996-2006 ProModel Corporation. All Rights Reserved.