

# SNARE DRUM RUDIMENTS

*Metronome Speed suggested.*

## Section A: SINGLE STROKES

### THE SINGLE STROKE ROLL



BRONZE	SILVER	GOLD	PLATINUM	DIAMOND
<i>m.m. = 44-56</i>	<i>m.m. = 58-70</i>	<i>m.m. = 72-84</i>	<i>m.m. = 86-98</i>	<i>m.m. = 100-112</i>

### THE SINGLE STROKE FOUR



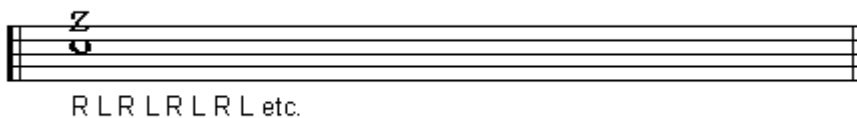
BRONZE	SILVER	GOLD	PLATINUM	DIAMOND
<i>m.m. = 60-84</i>	<i>m.m. = 84-108</i>	<i>m.m. = 108-132</i>	<i>m.m. = 132-154</i>	<i>m.m. = 154-180</i>

### SINGLE STROKE SEVEN



BRONZE	SILVER	GOLD	PLATINUM	DIAMOND
<i>m.m. = 60-80</i>	<i>m.m. = 85-105</i>	<i>m.m. = 110-130</i>	<i>m.m. = 135-155</i>	<i>m.m. = 160-180</i>

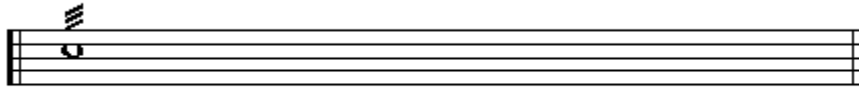
### MULTIPLE BOUNCE ROLL



**Section B:**

**DOUBLE – TRIPLE STROKES**

**DOUBLE STROKE ROLL**



R R L L R R L L R R L L R R L L etc.

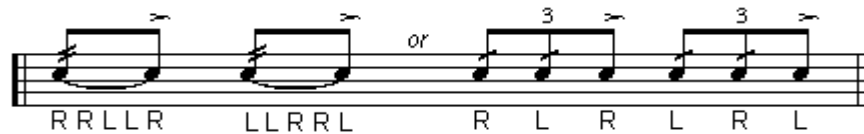
<b>BRONZE</b>	<b>SILVER</b>	<b>GOLD</b>	<b>PLATINUM</b>	<b>DIAMOND</b>
<i>m.m. = 60-75</i>	<i>m.m. = 80-95</i>	<i>m.m. = 100-115</i>	<i>m.m. = 120-135</i>	<i>m.m. = 140-155</i>

**TRIPLE STROKE ROLL**



<b>BRONZE</b>	<b>SILVER</b>	<b>GOLD</b>	<b>PLATINUM</b>	<b>DIAMOND</b>
<i>m.m. = 50-65</i>	<i>m.m. = 70-85</i>	<i>m.m. = 90-105</i>	<i>m.m. = 110-125</i>	<i>m.m. = 130-145</i>

**THE FIVE STROKE ROLL**



<b>BRONZE</b>	<b>SILVER</b>	<b>GOLD</b>	<b>PLATINUM</b>	<b>DIAMOND</b>
<i>m.m. = 60-75</i>	<i>m.m. = 80-95</i>	<i>m.m. = 100-115</i>	<i>m.m. = 120-135</i>	<i>m.m. = 140-160</i>

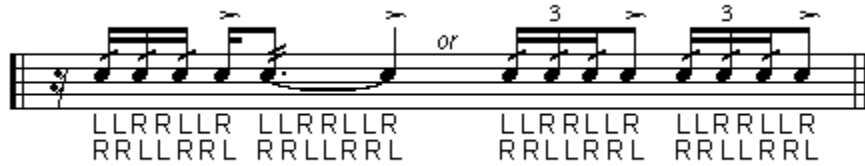


## SIX STROKE ROLL



BRONZE	SILVER	GOLD	PLATINUM	DIAMOND
<i>m.m. = 60-75</i>	<i>m.m. = 80-95</i>	<i>m.m. = 100-115</i>	<i>m.m. = 120-135</i>	<i>m.m. = 140-155</i>

## SEVEN STROKE ROLL



BRONZE	SILVER	GOLD	PLATINUM	DIAMOND
<i>m.m. = 60-75</i>	<i>m.m. = 80-95</i>	<i>m.m. = 100-115</i>	<i>m.m. = 120-135</i>	<i>m.m. = 140-155</i>

## NINE STROKE ROLL



BRONZE	SILVER	GOLD	PLATINUM	DIAMOND
<i>m.m. = 60-75</i>	<i>m.m. = 80-95</i>	<i>m.m. = 100-115</i>	<i>m.m. = 120-135</i>	<i>m.m. = 140-160</i>

## THIRTEEN STROKE ROLL



BRONZE	SILVER	GOLD	PLATINUM	DIAMOND
<i>m.m. = 60-75</i>	<i>m.m. = 80-95</i>	<i>m.m. = 100-115</i>	<i>m.m. = 120-135</i>	<i>m.m. = 140-160</i>





## TRIPLE PARADIDDLE



BRONZE	SILVER	GOLD	PLATINUM	DIAMOND
<i>m.m. = 55-80</i>	<i>m.m. = 85-110</i>	<i>m.m. = 115-140</i>	<i>m.m. = 145-170</i>	<i>m.m. = 175-200</i>

## PARADIDDLE-DIDDLE

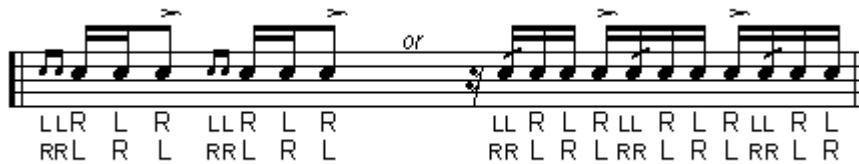


BRONZE	SILVER	GOLD	PLATINUM	DIAMOND
<i>m.m. = 40-60</i>	<i>m.m. = 65-85</i>	<i>m.m. = 90-110</i>	<i>m.m. = 115-130</i>	<i>m.m. = 135-150</i>

### Section D:

### RUFFS & DRAGS

## LESSON 25



BRONZE	SILVER	GOLD	PLATINUM	DIAMOND
<i>m.m. = 60-75</i>	<i>m.m. = 80-95</i>	<i>m.m. = 100-115</i>	<i>m.m. = 120-135</i>	<i>m.m. = 140-155</i>

## THE DRAG (RUFF)



BRONZE	SILVER	GOLD	PLATINUM	DIAMOND
<i>m.m. = 80-110</i>	<i>m.m. = 115-145</i>	<i>m.m. = 150-180</i>	<i>m.m. = 185-215</i>	<i>m.m. = 220-250</i>





## TRIPLE RATAMACUE



BRONZE	SILVER	GOLD	PLATINUM	DIAMOND
<i>m.m. = 50-60</i>	<i>m.m. = 65-75</i>	<i>m.m. = 80-95</i>	<i>m.m. = 100-115</i>	<i>m.m. = 120-135</i>

## DRAGADIDDLE



BRONZE	SILVER	GOLD	PLATINUM	DIAMOND
<i>m.m. = 60-75</i>	<i>m.m. = 80-95</i>	<i>m.m. = 100-115</i>	<i>m.m. = 120-135</i>	<i>m.m. = 140-155</i>

## DRAG PARADIDDLE #1



BRONZE	SILVER	GOLD	PLATINUM	DIAMOND
<i>m.m. = 50-55</i>	<i>m.m. = 60-65</i>	<i>m.m. = 70-80</i>	<i>m.m. = 85-95</i>	<i>m.m. = 100-110</i>

## DRAG PARADIDDLE #2



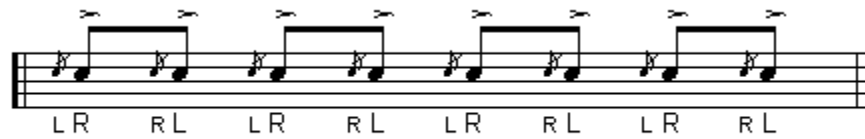
BRONZE	SILVER	GOLD	PLATINUM	DIAMOND
<i>m.m. = 50-70</i>	<i>m.m. = 75-95</i>	<i>m.m. = 100-120</i>	<i>m.m. = 125-140</i>	<i>m.m. = 145-160</i>



## Section E:

## FLAMS

### THE FLAM



BRONZE	SILVER	GOLD	PLATINUM	DIAMOND
<i>m.m. = 50-75</i>	<i>m.m. = 80-105</i>	<i>m.m. = 110-135</i>	<i>m.m. = 140-165</i>	<i>m.m. = 170-200</i>

### THE FLAM TAP



BRONZE	SILVER	GOLD	PLATINUM	DIAMOND
<i>m.m. = 50-65</i>	<i>m.m. = 70-85</i>	<i>m.m. = 90-105</i>	<i>m.m. = 110-125</i>	<i>m.m. = 130-150</i>

### INVERTED FLAM TAP



BRONZE	SILVER	GOLD	PLATINUM	DIAMOND
<i>m.m. = 40-55</i>	<i>m.m. = 60-75</i>	<i>m.m. = 80-95</i>	<i>m.m. = 100-115</i>	<i>m.m. = 120-135</i>

### FLAM ACCENT



BRONZE	SILVER	GOLD	PLATINUM	DIAMOND
<i>m.m. = 60-80</i>	<i>m.m. = 90-110</i>	<i>m.m. = 120-140</i>	<i>m.m. = 150-170</i>	<i>m.m. = 180-210</i>



## SWISS ARMY TRIPLET

LR R L LR R L LR R L LR R L  
RL L R RL L R RL L R RL L R

BRONZE	SILVER	GOLD	PLATINUM	DIAMOND
<i>m.m. = 35-50</i>	<i>m.m. = 55-70</i>	<i>m.m. = 75-95</i>	<i>m.m. = 100-120</i>	<i>m.m. = 120-135</i>

## FLAM PARADIDDLE

LR L R R RL R L L

BRONZE	SILVER	GOLD	PLATINUM	DIAMOND
<i>m.m. = 50-65</i>	<i>m.m. = 70-85</i>	<i>m.m. = 90-105</i>	<i>m.m. = 110-125</i>	<i>m.m. = 130-150</i>

## FLAM PARADIDDLE-DIDDLE

LR L R R L L RL R L L R R

BRONZE	SILVER	GOLD	PLATINUM	DIAMOND
<i>m.m. = 35-45</i>	<i>m.m. = 50-60</i>	<i>m.m. = 65-75</i>	<i>m.m. = 80-90</i>	<i>m.m. = 95-105</i>

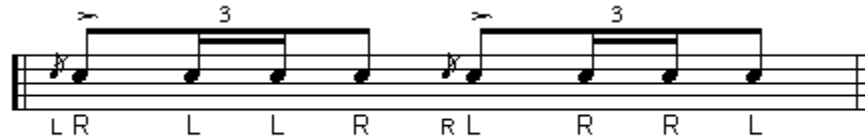
## FLAMACUE

LR L R L LR  
RL R L R RL

BRONZE	SILVER	GOLD	PLATINUM	DIAMOND
<i>m.m. = 40-60</i>	<i>m.m. = 65-85</i>	<i>m.m. = 90-110</i>	<i>m.m. = 115-135</i>	<i>m.m. = 140-160</i>



## FLAM DRAG



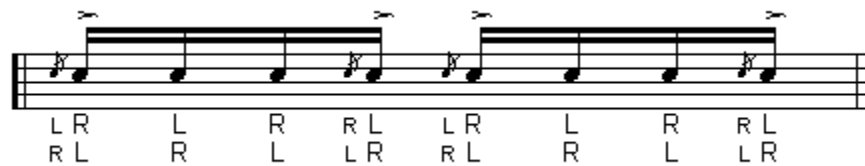
BRONZE	SILVER	GOLD	PLATINUM	DIAMOND
<i>m.m. = 50-70</i>	<i>m.m. = 75-95</i>	<i>m.m. = 100-120</i>	<i>m.m. = 125-145</i>	<i>m.m. = 150-170</i>

## SINGLE FLAMMED MILL



BRONZE	SILVER	GOLD	PLATINUM	DIAMOND
<i>m.m. = 50-70</i>	<i>m.m. = 75-95</i>	<i>m.m. = 100-120</i>	<i>m.m. = 125-145</i>	<i>m.m. = 150-160</i>

## PATAFLAFLA



BRONZE	SILVER	GOLD	PLATINUM	DIAMOND
<i>m.m. = 50-65</i>	<i>m.m. = 70-85</i>	<i>m.m. = 90-105</i>	<i>m.m. = 110-125</i>	<i>m.m. = 130-150</i>

Practice makes perfect...!

