

Stone-arch Bridge
(18.76305N, 73.35334E)

to Khopoli

Tunnel
Mumbai-Pune Highway

B H O R G H A T



Summit view from point 'A'

Mumbai-Pune Railway Track

Tunnel

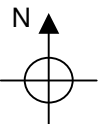
Curved ascending railway track

Car Parking
(18.75811N, 73.37655E)
1821 feet (555 meters)



Summit view from point 'C'

10:59:09 AM



Tata Hydroelectric Reservoir



Temple at Duke's Nose summit

Khandala Railway Station
(18.75501N, 73.37611E)
1837 feet (560 meters)

to Lonavla



'Difficult' Route

'Easy' Route

Power Transmission Towers
(18.74619N, 73.37281E)
2362 feet (720 meters)

SUMMIT of DUKE'S NOSE
(18.74166N, 73.35928E)
2648 feet (807 meters)

Perennial Well
(18.73986N, 73.36827E)
2099 feet (640 meters)

Total distance of trek from Khandala Railway station to Duke's Nose summit via the 'difficult' route is 4.1 kilometers.

INS Shivaji (Naval Academy)

DECCAN PLATEAU

DUKE'S NOSE (Nagphani)

Duke's Nose is an excellent hike for the novice as well as the experienced trekker. The profile of this mountain is remarkably different when viewed from different angles. From the highway or railway track along the Bor Ghat, this looks like a truly formidable pinnacle. However, when approaching from Khandala or from the east, the appearance is more like a gently sloping hill.

Duke's Nose is conveniently located near Khandala, which can be readily accessed by road or rail. By using the 'easy route' marked here, it should be possible for even relatively inexperienced hikers to reach the summit without much difficulty.

This map was created by Mahesh Chengalva based on Global Positioning System (GPS) data collected during hike of December 28, 2000. All routes and landmarks are accurate to within 15 feet (5 m). All other features are approximations. The other hikers were Dr. Yuvaraj Chavan, Dr. Navin Verma, Dr. Sharang Wartikar, Prerna Adsul and Shivkumar Pandey. Similar maps of other Sahyadri hiking areas are available for free download at: <http://www.geocities.com/drchengalva> For any feedback, e-mail DrChengalva@hotmail.com

Motorable road ——— Hike Trail
Height in feet above mean sea level indicated, (19.38685N,73.77917E) indicates latitude and longitude in degrees in decimal format



View of Duke's Nose summit from point 'B'

Hike responsibly! Do not litter. Help preserve your incredible heritage for generations to come.

This document can be freely distributed (including website display) only in an unaltered form

10:38:19 AM