

DOUGLAS BOYD
BOX 264
ODESSA, TX. 79760

228.75

DESCRIPTION OF TEMPLE

"THE VIRGIN DAUGHTER OF ZION"

REFERENCES:

EZEK. 1:4-28; 10
REV. 14:14; EX. 24:10;
EX. 19:18; 2 KINGS 2:11
NUM. 11:8;

IT IS REMINISCENT OF EZEKIEL'S VISION
... AS IF DESIGNED TO FLY, "A WHEEL
WITHIN A WHEEL" (EZEK. 1:16). THE EX-
TERIOR IS OF A VARIABLE NACRED TRANSLU-
CENCY. (CF. VS. 4) THE INTERIOR IS OF A
CRYSTAL CLEAR TRANSPARENCY (VS. 22).

THE LOWER PORTION AS POWER UNIT
OR ENGINEERING SECTION GLOWS GREENISH-
YELLOW (THE COLOR OF BERYL STONE) AND
GIVES THE SOUND OF A GREAT SURGE OF
ELECTRICAL ENERGY ON LANDING... BURN-
ING A GLASS-LINED SOCKET 150 FEET DEEP
300 FEET BROAD. SURROUNDING BUILDINGS
MAY BE VAPORIZED OR "TRANSLATED". OVER
100,000 SQ. FT. OF FLOOR SPACE IS ALSO
INDICATED FOR THE INTERIOR OF THE LOWER
PORTION.

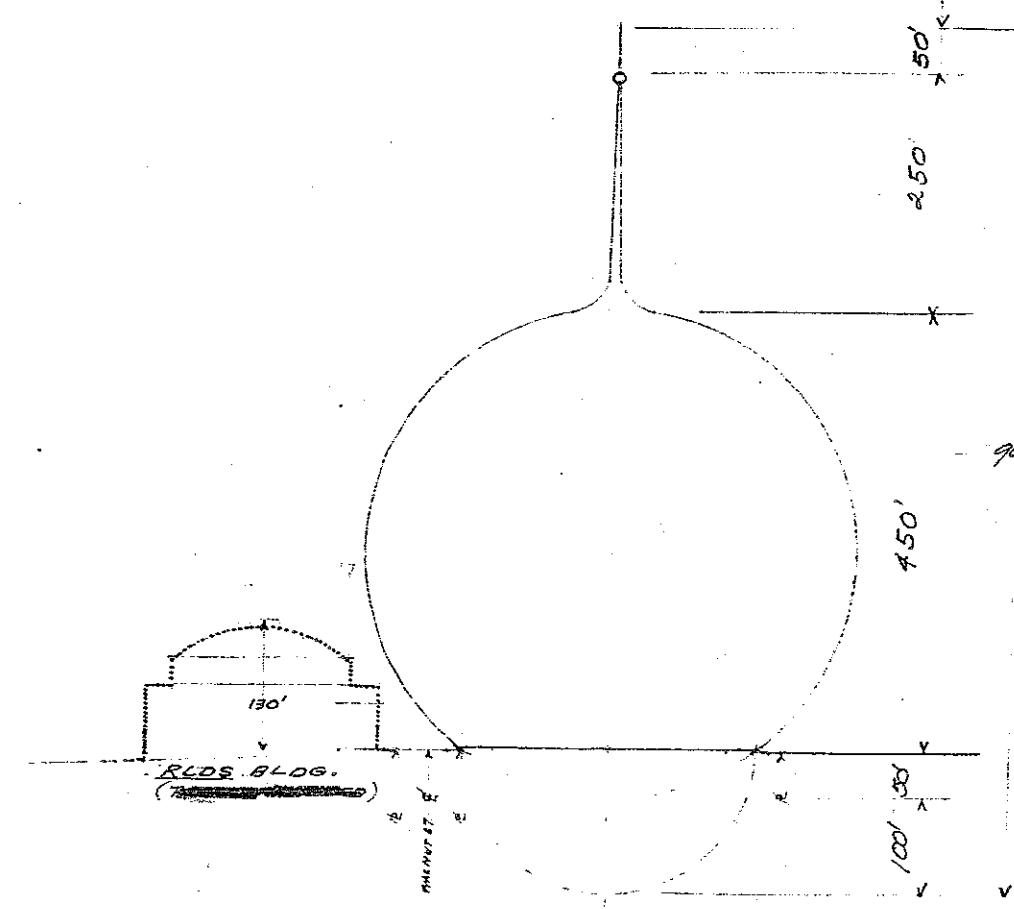
THE GROUND LEVEL IS ENCIRCLED BY
36 CHAPELS... THREE FOR EACH OF THE
TWELVE TRIBES OF ISRAEL OR ONE FOR
EACH PAIR OF SEVENTY ELDERS. TWO
COURTS SURROUND THE INNER CIRCLE OF
THE TWELVE APOSTLES WHICH ENCOMPASS-
ES THE HOLY PLACE OF THE THREE
HIGH PRIESTS. THE MOST HOLY PLACE
IS AT THE CENTER... (THE MERCY SEAT)

A SEVEN DECK CHOIR LOFT RISES A-
BOVE THE CHAPELS.

THERE IS A RAINBOW ROUND ABOUT
THE ENTIRE STRUCTURE.

THERE SHALL BE, "A GREAT FORSAKING IN THE MIDST
OF THE LAND" (ISA. 6:12), REMOVING THE INIQUITY
IN ONE DAY (EZEK. 3:9). DUE SEPT. 11, 1980 (ROSH
HASHANA). CF. NO. 2:145

* THE NEW WHITE HOUSE

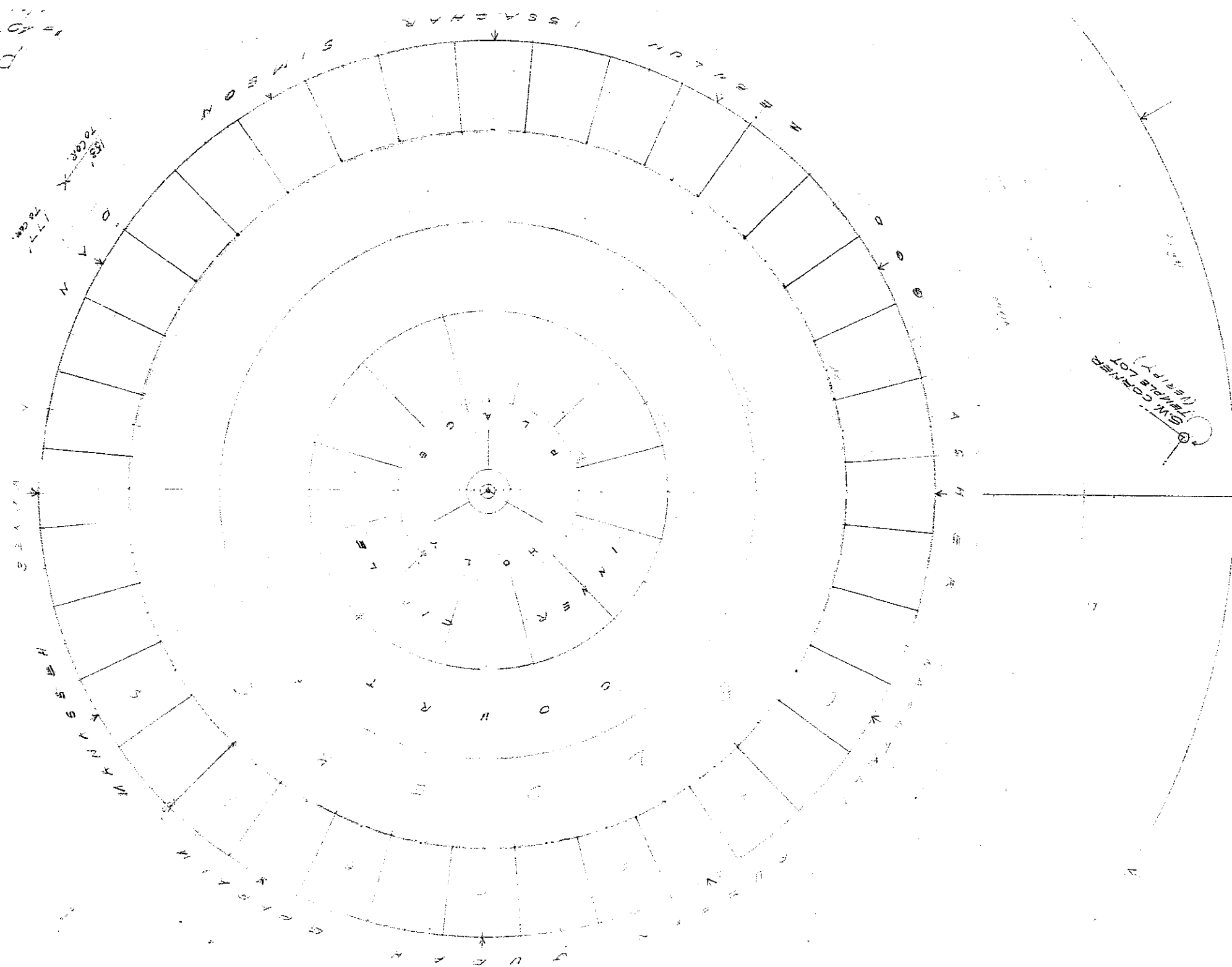


OUTLINES

1" = 200'
12/27/77
228.75

WERKABA (THE DIVINE CHARIOT, GEN. 1:1)

PLAN

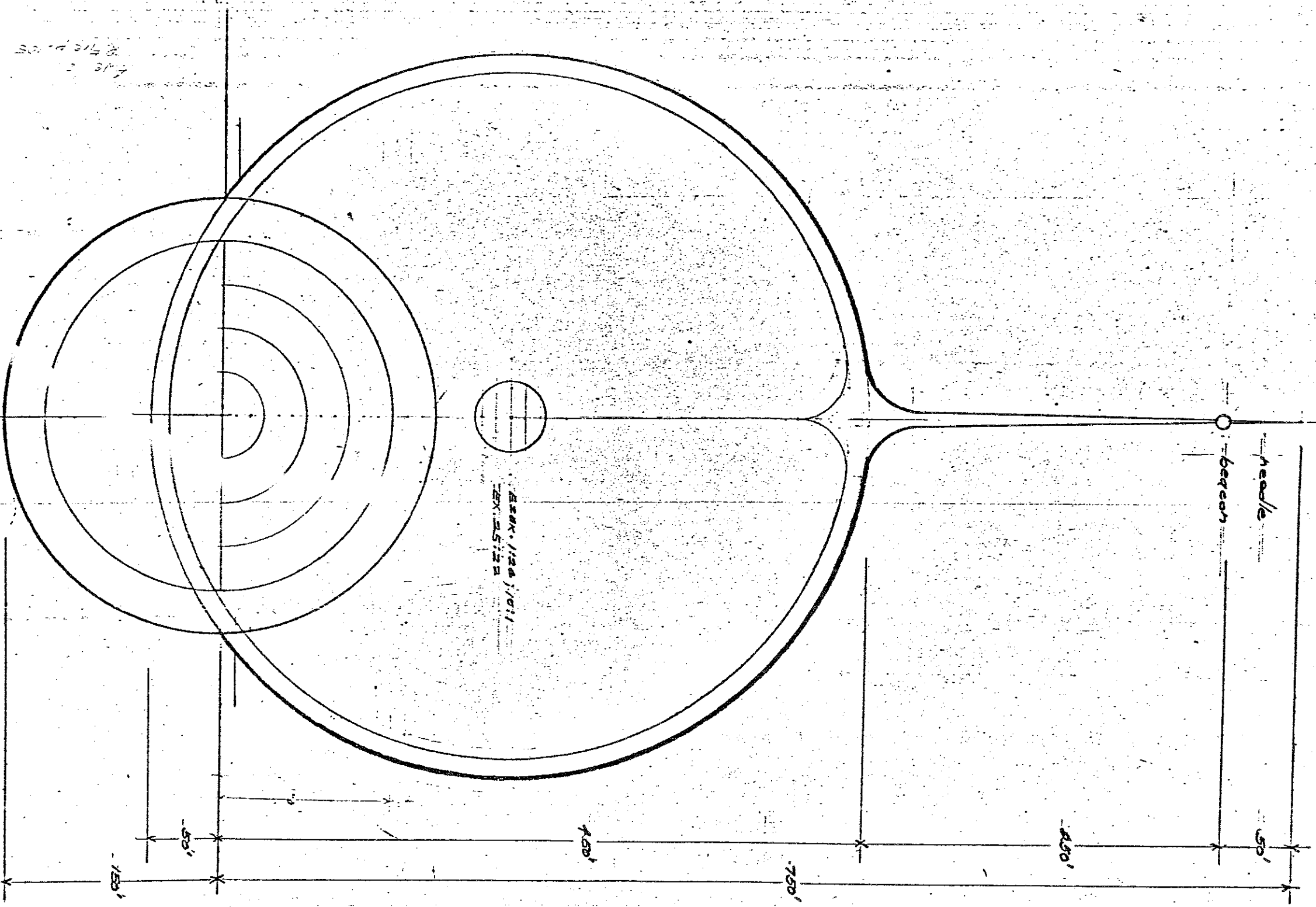


153' TO COR.
177' TO COR.

S.W. CORNER
(SAMPLE LOT)

153' TO COR.
177' TO COR.

S.W. CORNER
(SAMPLE LOT)



File 2
8712 P. 03

LINDA BOARD
KOSA-TV
1/18/50

SECTION
1/4" = 60'
2/13/79

DONIPAS BOARD
11/11/48

needle
beacon

50'

1050'

750'

450'

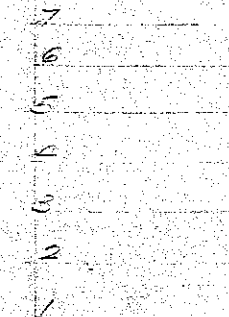
150'

50'

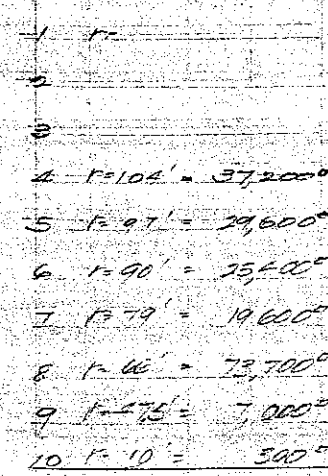
BANK 1204 101
EX 2512

BANK 1204 101
EX 2512

SEATING



FLOOR SPACE



4	F=104'	= 37,200'
5	F=97'	= 29,600'
6	F=90'	= 23,400'
7	F=79'	= 19,600'
8	F=66'	= 7,700'
9	F=57.5'	= 7,000'
10	F=10'	= 300'
GROSS		= 131,900'
LESS 25%		32,900
NET		= 100,000'

PH 915
ODSSA

ENTRANCE

ELDERS COURT

COURT

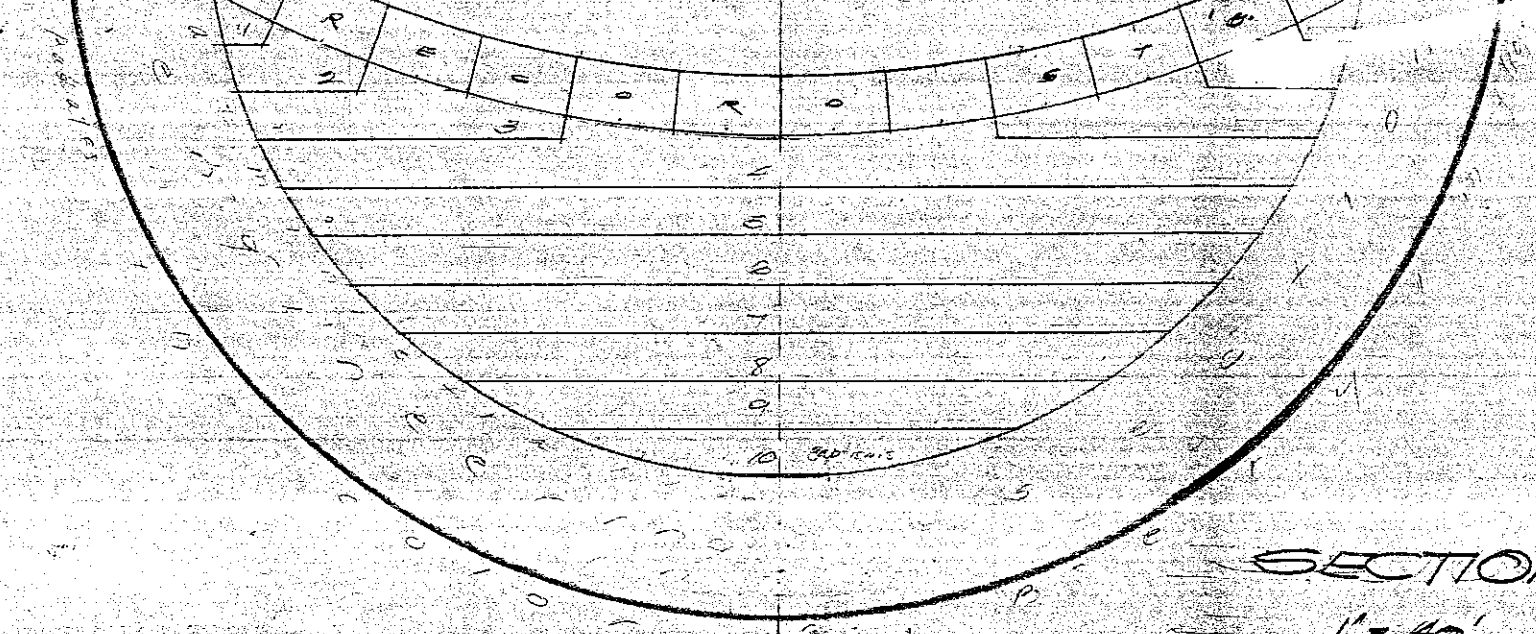
INNER HOLY PLACE

CIRCLE

CHANCEL (TYPICAL)

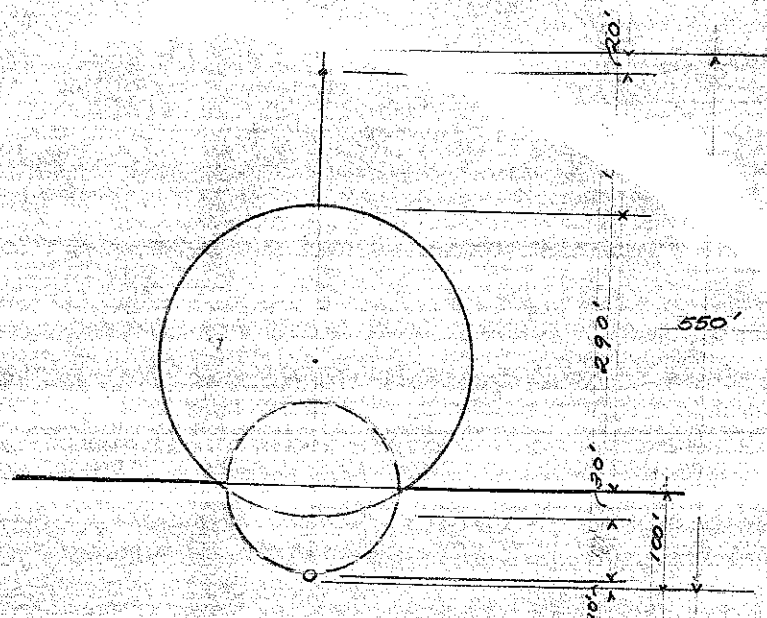
GROUND DATUM

TERRA FIRMA



SECTION

1" = 40'
2/23/79 1:15p



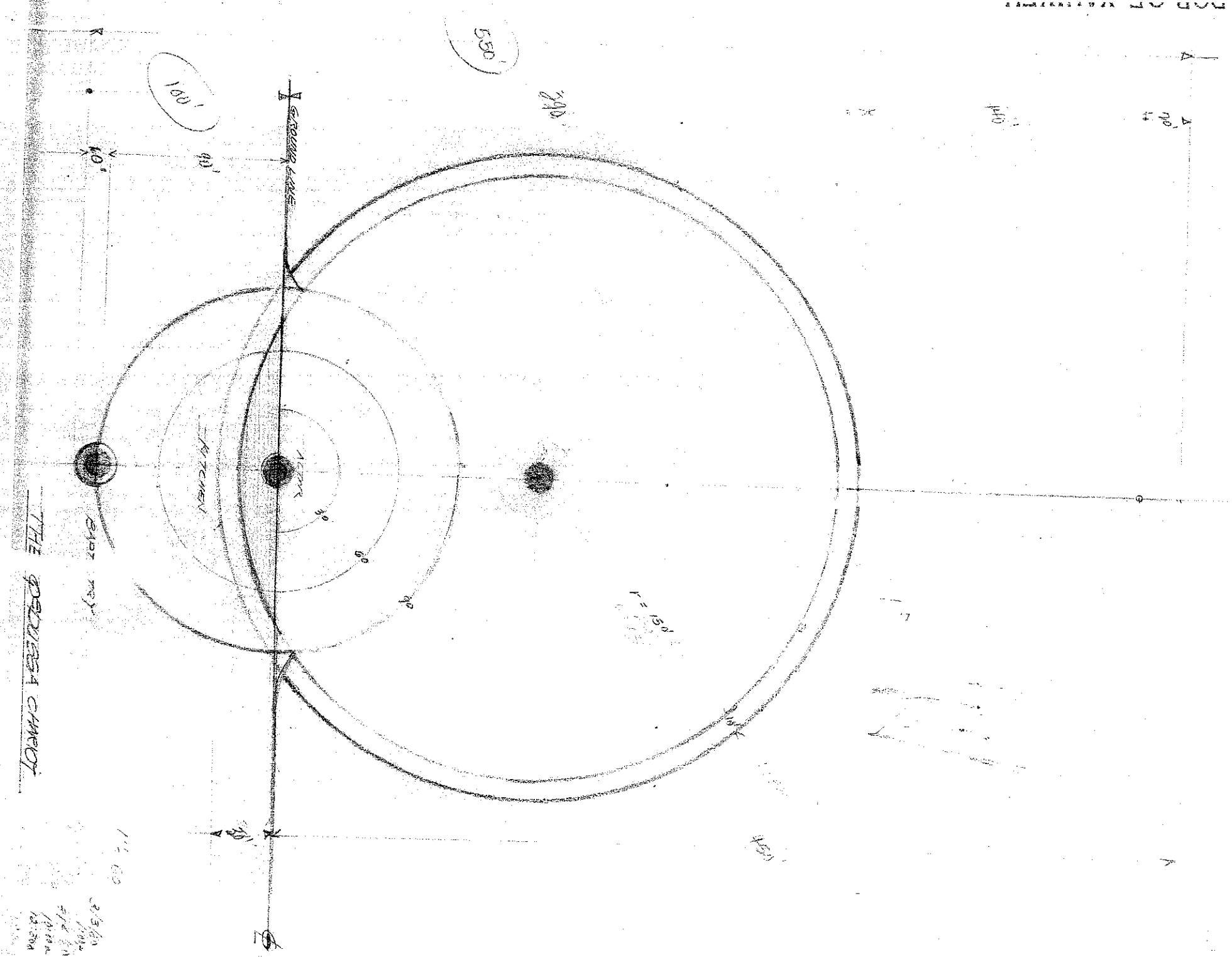
THE Q^o DUSSA CHARIOT

1" = 200'

RCD. 3/3/80

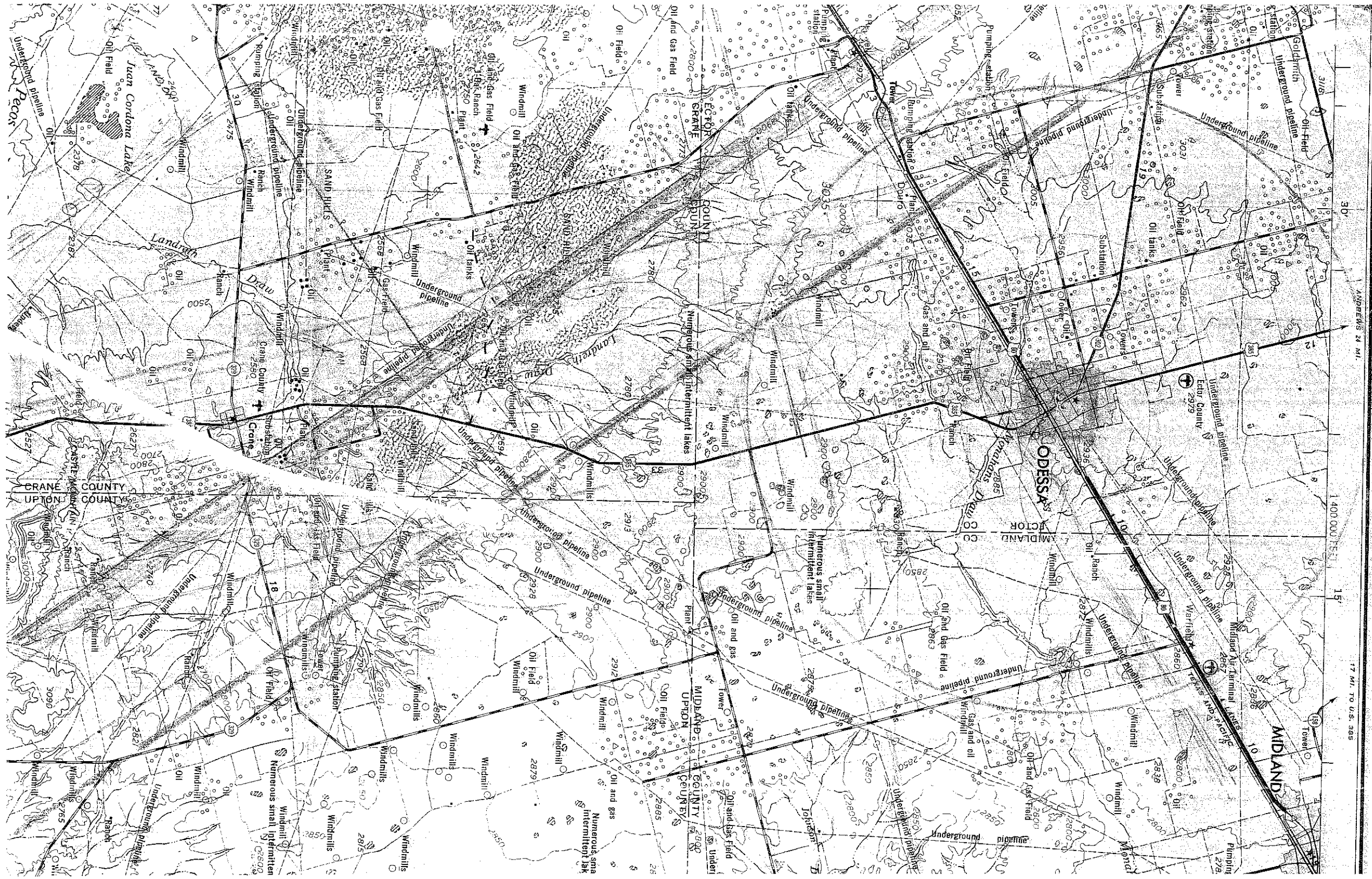
CATERS TO FEASTS

7-7-80



THE PRESSURE CHAMBER

112.00
 21.3/24
 10/10/10
 10/10/10
 10/10/10



ANNOUNCING

THE DESCENT AND LANDING OF THE QOUSSA CHARIOT UPON THE CITY OF DOUSSA, TERRAS, MARCH 30, 1980 AT 11:00 AM CST. TOUCH DOWN AT CENTER OF FRESHWATER DETERMINED BY ANGLE NEAR DOWNTOWN AREA. . . . LET THE ENTIRETY BE PROTECTED AT THEIR HOUSES OF WORSHIP, SANDWICHES BE RICH OR POOR - HUNGRY THEMSELVES AS THE PEOPLE - MINUTE AT JONAH'S PREACHING. LET WHOSE WILL ENJOY WAYS TO BEYOND A TWELVE MILE RADIUS. TEMPLES BEGINS SUNSET MARCH 29 11:00 PASTING, PEASANT, JOY, UNLACED, SWEETNESS, KNOWLEDGE, SOLEMN, SACRAMENTS, UNLACED BREAD, SWEETNESS AND TRUTH. . . . THE BRACE OF THE STERNAL SAVIOR BE WITH US, AMEN.

DELETED 8/18/80

ITEM

OUT OF HOLY HABITATIONS THE Qe QUSSA CHARIOT . . .

THIS IS A SMALLER VERSION OF THE MERRICA (DIVINE CHARIOT) WHICH IS TO BE IN IMAGINANCE, MESSIAH, THE QOUSSA (ISA. 6: 3) 90 REV. 4:8) SHOULD BE CHANGED BY THE GROUPS DESIGNATED AS THE CHARIOT DECIDES TO WIND DESTRUCTION. HOWEVER, THE ATONEMENT OF THE CROSS FOR HIS CULTURE IS INDICATED BY A PATTERN FORMED IN THE LOCATION OF SEVERAL LOCAL CHURCHES, VIZ., FIRST CHRISTIAN, EPOT'S PENTECOSTAL, MORMON, LUTHERAN AND CATHOLIC. THE FUNCTION OF THE QOUSSA CHARIOT IS TO AID AND PROTECT THE WORK OF PURIFYING THE SOULS OF LEVI (MAL. 3:3) IN PREPARATION FOR TO MINISTER IN THE MERRICA BEYOND THE TRP OF THE GOVERNMENT AT INDEPENDENCE. SOME FEEL THEIR DESCRIPTION IS GIVEN IN 5 ENOCH (THE HEAVEN BOOK OF ENOCH, P. 184) SEE INTRODUCTION, P. 184 AND CH. 40.

PROTECTED PLACES AND STRUCTURES MAY INCLUDE ANY HOUSE OF WORSHIP WHEREIN THE NAMES OF THE STERNAL SAVIOR IS NAMED IN SINCERITY AND TRUTH WITH FAITH. THE DIVINE NAME PROVIDES PROTECTION. SEVERAL PLACES HAVE BEEN IDENTIFIED BY GEOMETRICAL AND LINEAR RELATIONSHIPS. NEVERTHELESS, INDIVIDUAL JUDGEMENT IS GUIDED BY THE SPIRIT IS THE PRIME DIRECTIVE, AS A WITNESS OF FAITH.

A FIVE POINT STAR PATTERN HAS DEVELOPED OUT OF THE ORIGINAL QOUSSA TRIMBLE BY THE LOCATION OF HIGH-LAND UNITED METHODIST IS RELATED TO WEST PORT BAPTIST. THIS LINE POINTS TO OTTOBANGOUS AND PASSES THROUGH CRESENT PARK BAPTIST. THE STAR IS A PROTECTIVE SYMBOL. YET, AGAIN, IT IS THE INTENT OF THE HEART IN FAITH WITH THE GUIDANCE OF THE SPIRIT THAT MUST BE SOUGHT PRIMARILY. THIS SYMBOLOLOGY IS MERELY SUGGESTIVE OF THE POSSIBILITIES. ALL OF WHICH MAY NOT BE IDENTIFIED AS YET.

OTHER PLACES ON LINE IN PATTERN INCLUDE THE METHODIST AT SOUTH MUSKIE, SUN AND JACKSON PARKER HTS, CHRISTIAN, AND AS PREVIOUSLY NOTED, BOTH JEROME'S INTERSESS ANDS AND THE VES OF YAKHWEH.

LET WHOSE WILL KEEP HIS FAITH

8/18/80

Odessa 91M & Rinn

3-25-80

DOUGLAS BOYD ALONE AM ANNOUNCING

THE DESERT AND LANDING OF
 THE O'DESSA CHARIOT UPON THE
 CITY OF ODESSA, TEXAS, MARCH
 30, 1980 AT 11:00 A.M. C.S.T.
 TOUCH DOWN AT CENTER OF
 PREVIOUSLY DETERMINED TRI-
 ANGLE NEAR DOWNTOWN AREA.
 LET THE FAITHFUL BE AS-
 SEMBLED AT THEIR HOUSES OF
 WORSHIP, SANCTUARIES OR
 PROTECTED PLACES OR
 DESIGNATED... LET THE PROUD
 RICH OR POOR-HUMBLE
 THEMSELVES AS THE PEOPLE OF
 NINEVEH AT JONAH'S
 PREACHING... LET THOSE WHO SO
 WILL EVACUATE TO BEYOND A
 TWELVE MILE RADIUS. TEMPEST
 BEGINS SUNSET MARCH 29.
 FASTING, PRAYER, JOY, PEACE,
 GENTLENESS, KINDNESS, SOLEMN
 SACRAMENTS, UNLEAVENED
 BREAD, SINCERITY AND TRUTH...
 THE GRACE OF THE ETERNAL
 SAVIOR BE WITH ALL, AMEN.

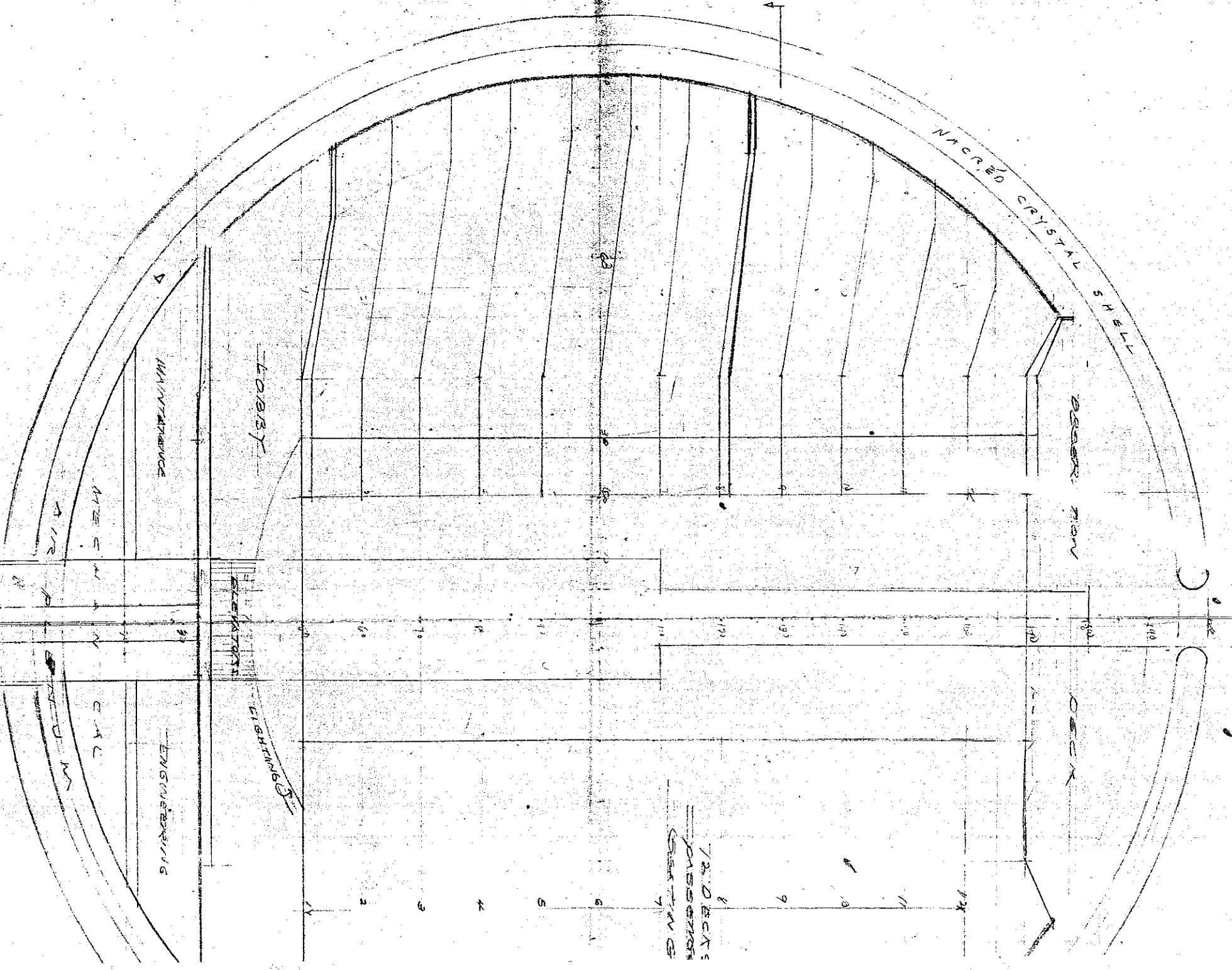
ANNOUNCING

THE DESERT AND LANDING OF THE O'DESSA CHARIOT - UPON THE
 CITY OF ODESSA, TEXAS, MARCH 30, 1980 AT 11:00 AM, C.S.T.
 TOUCH DOWN AT CENTER OF PREVIOUSLY DETERMINED TRI-
 ANGLE NEAR DOWNTOWN AREA. LET THE FAITHFUL BE
 ASSEMBLED AT THEIR HOUSES OF WORSHIP, SANCTUARIES OR
 PROTECTED PLACES OR DESIGNATED... LET THE PROUD
 RICH OR POOR - HUMBLE THEMSELVES AS THE PEOPLE OF
 NINEVEH AT JONAH'S PREACHING... LET THOSE WHO SO
 WILL EVACUATE TO BEYOND A TWELVE MILE RADIUS.
 TEMPEST BEGINS SUNSET MARCH 29... FASTING, PRAYER, JOY,
 GENTLENESS, KINDNESS, SOLEMN SACRAMENTS,
 UNLEAVENED BREAD, SINCERITY AND TRUTH...
 THE GRACE OF THE ETERNAL SAVIOR BE WITH ALL, AMEN.

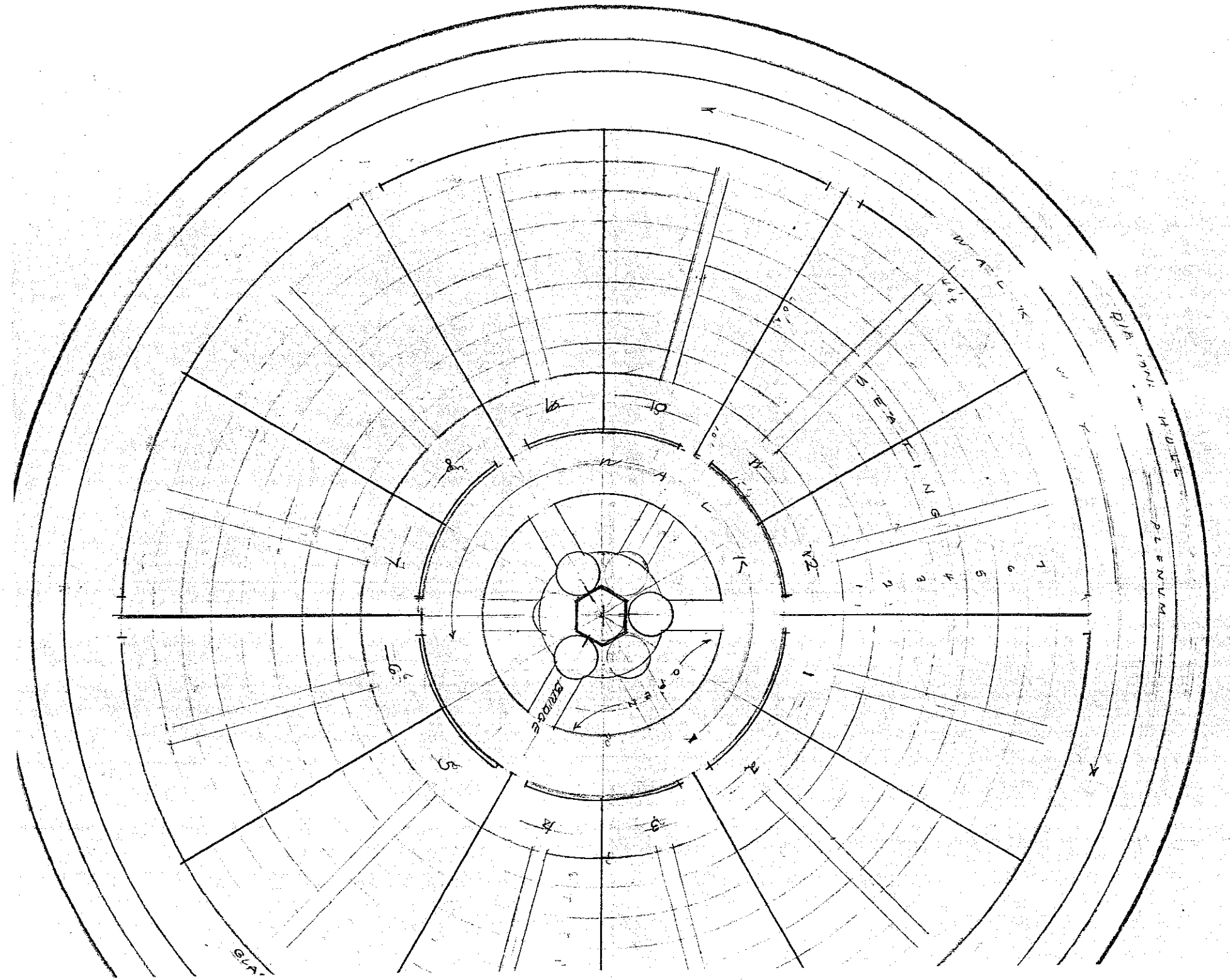
A
MISSING

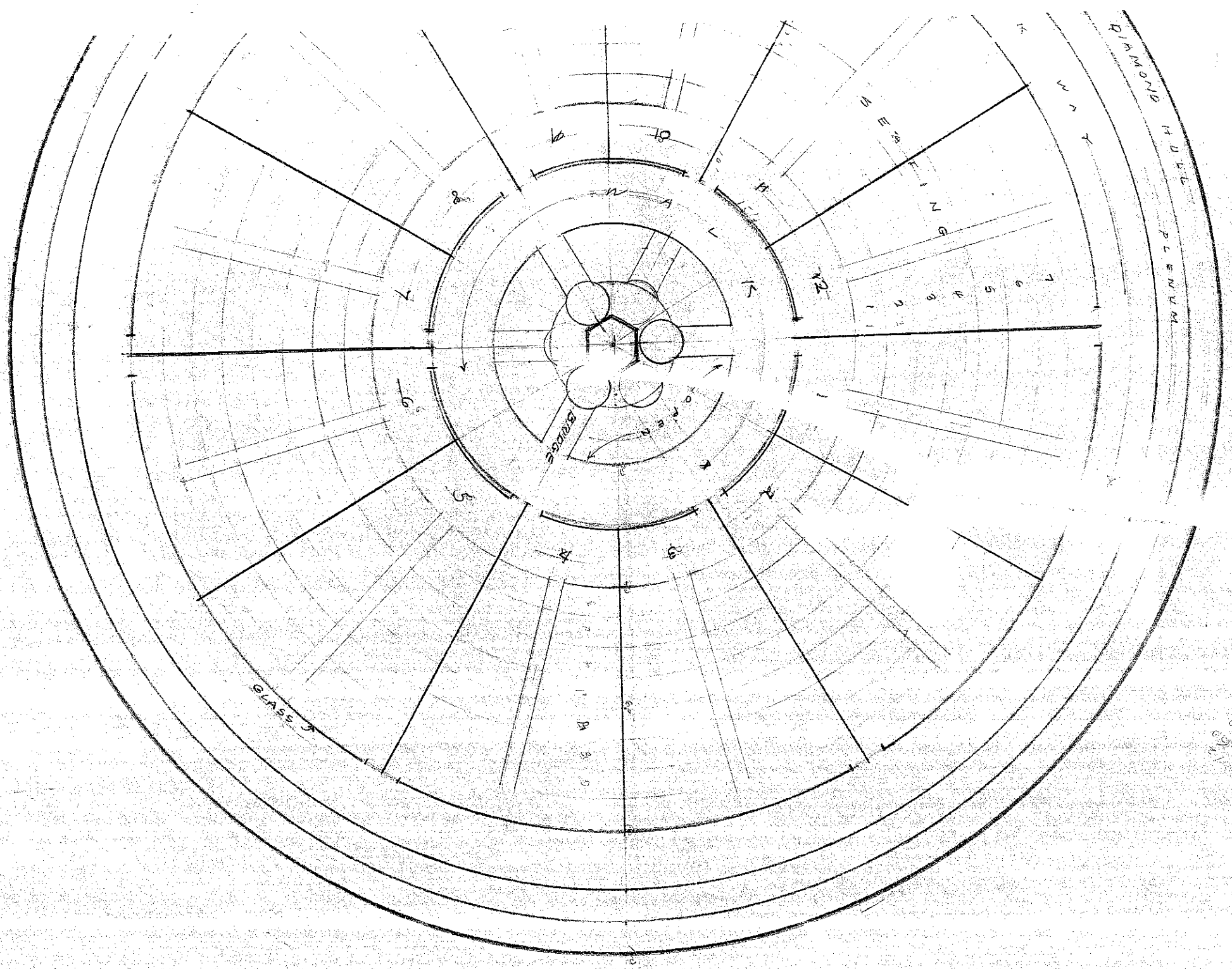
R/L

→ Gates of Pearl



1" = 20'



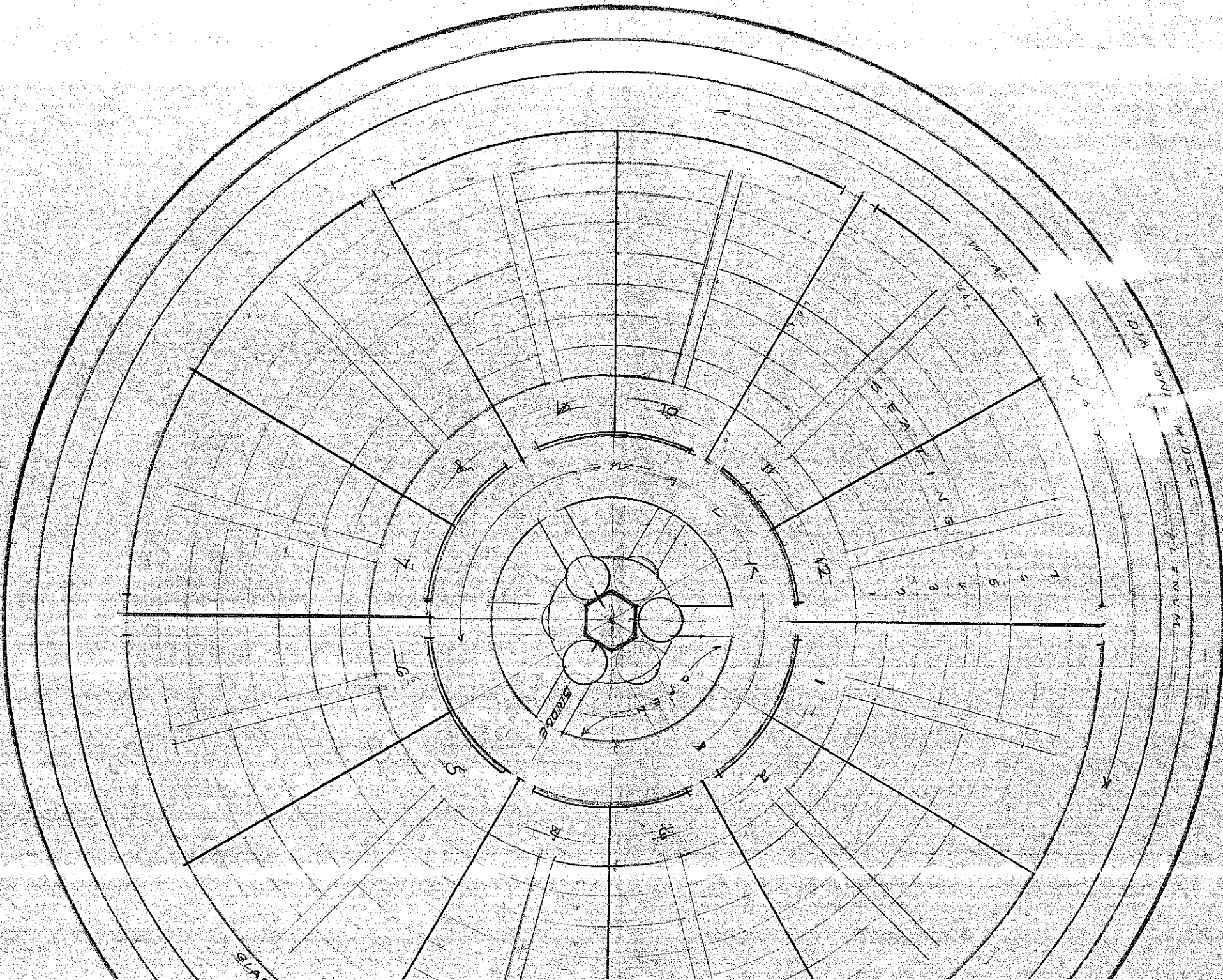


APPROXIMATE SECTIONS

8th FLOOR
TYPICAL

8.6.80

COV
10000



ASCENDING STAIRS

8th FLOOR
Typical

8-6-80

DO NOT COPY

MAIN FLOOR PLAN

