

THE LINEAGE OF MUHAMMAD

ABRAHAM



ISMAIL



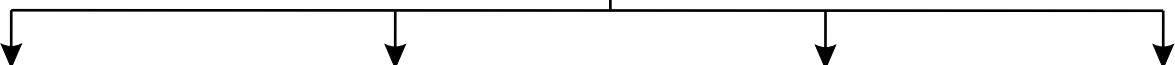
ADNAN



QURAYSH



ABD MANAF



ABD SHAMS

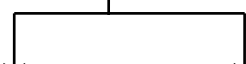
MUTTALIB

HASHIM

NAWFAL



UMAYYAH

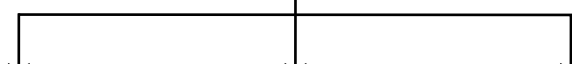


OSMAN

MU'AWIYEH

THE UMAYYED
CALIPHS

ABDUL MUTTALIB (SHAYBAH)



ABBAS

ABDU'LLAH

ABUTALIB

THE ABBASID
CALIPHS

MUHAMMAD
(570-632)

ALI

THE SHIAHS
SECTS

THE FOUR MAJOR SUNNI'S SECTS

(SUNNITE)

1-HANAFI

2-MALIKI

3-SHAFI'I

4-HANBALI

THE SUCCESSORS OF MUHAMMAD

(ACCORDING WITH SUNNI'S DOCTRINE)

MUHAMMAD

THE SUNNIS

ARE 536.000.000

THE FOUR RIGHTLY
GUIDED CALIPHS
(KHULAFAT RASHIDIN)
632 - 661

ABU-BAKR 632-634
OMAR 634-644
OSMAN 644-656
ALI 656-661

IN
MEDINA

THE 14 UMAYYEH
CALIPHS
661-750

MU'A'WIYAH 661-680
12 OTHER SUCCESSORS
MARWAN II 744-750

IN
DAMASCUS

THE UMAYYEH CALIPHS
IN SPAIN (CORDOVA)

ABDA-RAHMAN 756
14 OTHER SUCCESSORS
HISHAM III 1031

THE 37 ABBASID
CALIPHS
750-1258

ABDU'LLAH (SAFFAH) 750-754
35 OTHER SUCCESSORS
AL MUSTA'SIM BILLAH 1242-1258

IN
BAGHDAD

THE ABBASID CALIPHS
IN EGYPT:

MUSTANSIR 1261
15 OTHER SUCCESSORS
MUSTAMSEK 1517

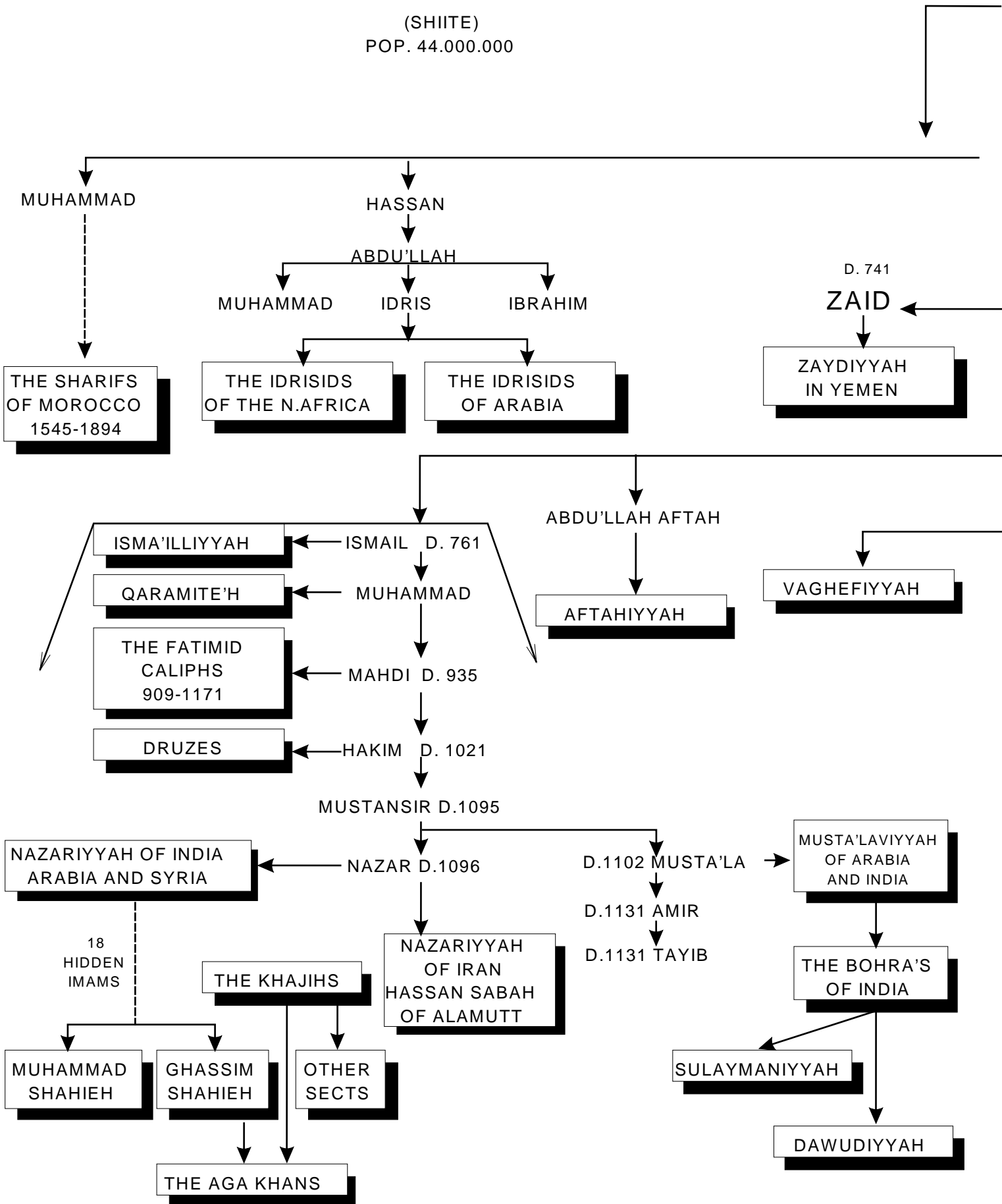
THE 36 OTTOMAN
RULERS (CALIPHS)
1299-1922

OSMAN I 1299-1326
34 OTHER SUCCESSORS
MUHAMMAD VI 1918-1922

IN
CONSTANTINOPLE

THE MAJOR SHIAHS SECTS

(SHIITE)
POP. 44.000.000



THE TWELVERS

