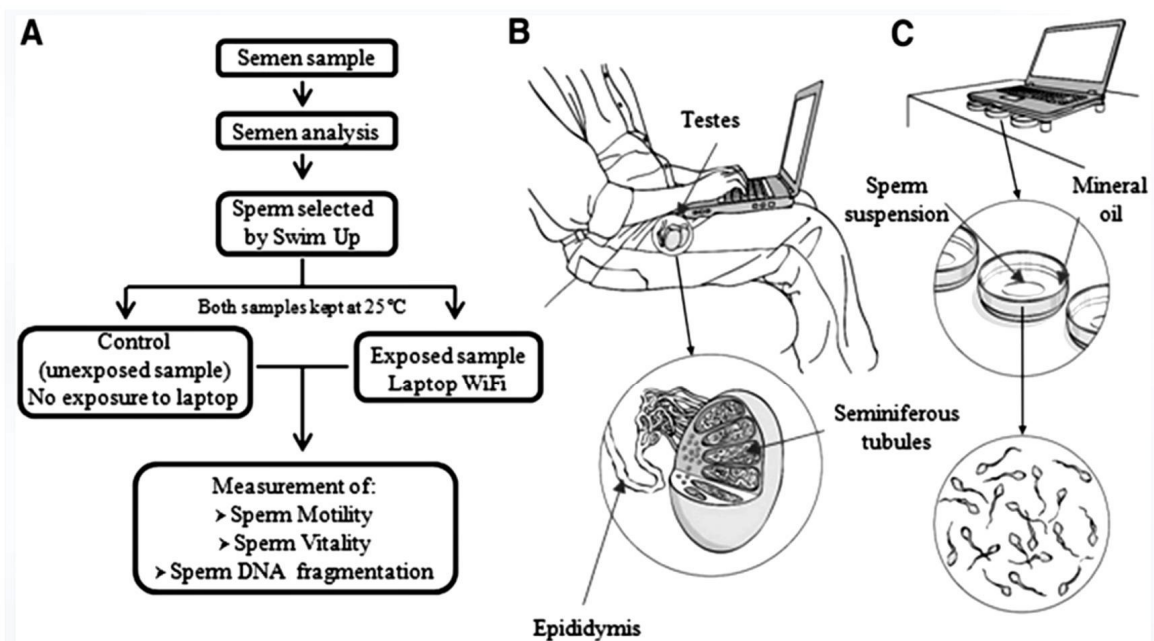


Dos ejemplos de esos estudios

I. (2012) Efectos de la radiación wi-fi de **2.4 GHz** sobre el semen. Afecta movilidad y fragmentación del ADN en espermatozoides.



Study design and set-up for the exposure of human sperm to laptop. (A) Experimental design. (B) Schematic situation of the use of the laptop on the lap near the testes. (C) Diagram of the in vitro study. The Petri dishes were placed at 3 cm from a laptop computer. Each Petri dish contained a drop of 400 μ L of sperm suspension in human tubal fluid/synthetic serum substitute (HTF/SSS) covered with mineral oil to prevent evaporation.

Avendaño. Laptop usage and sperm quality. *Fertil Steril* 2012.

Conrado Avendano, M.S., Ariela Mata, M.S., Cesar A. Sánchez Sarmiento, M.D., Ph.D. and Gustavo F. Doncel, M.D., Ph.D. *Fertility and Sterility*® Vol. 97, No. 1, January 2012