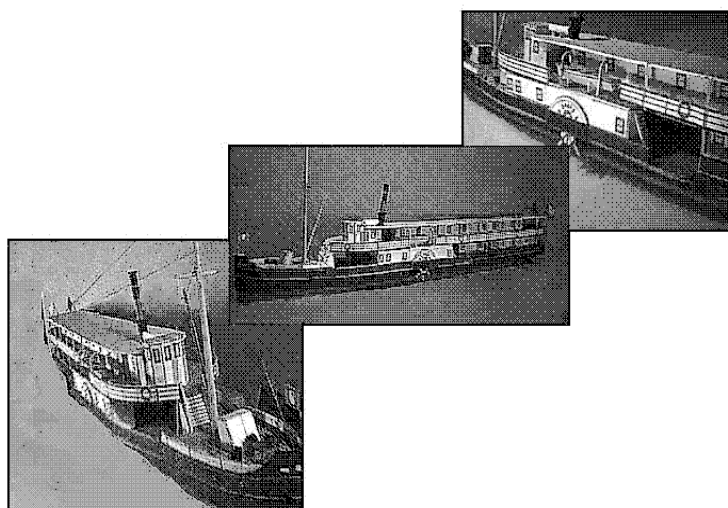


MODELISMO NAVAL

URUGUAY

Vapor "Surubí"



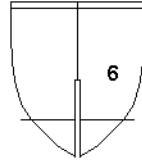
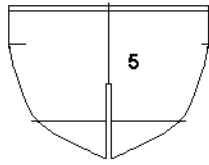
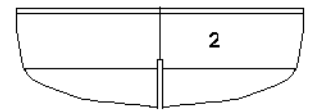
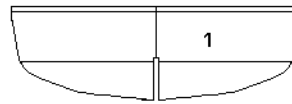
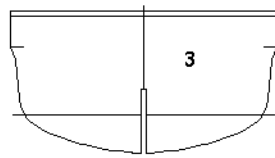
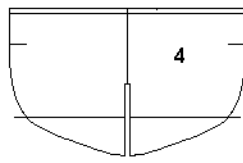
Buque de pasajeros de la compañía de navegación «Mensajerías Fluviales del Plata» perteneciente al empresario Saturnino Ribes. Se construyó en astilleros situados en la ciudad de Salto (Uruguay), fue botado en 1900 y se mantuvo activo hasta el año 1932.

El presente modelo, fue diseñado en base a los planos derivados de una investigación histórica realizada por el modelista naval *Giorgio Munisso*, oriundo de la ciudad de Salto. Su investigación abarca otros buques, entre ellos, el vapor de pasajeros «Corrientes». Por mayor información comunicarse por el siguiente e-mail giorgio@adinet.com.uy

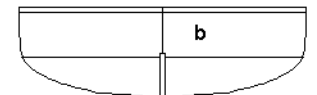
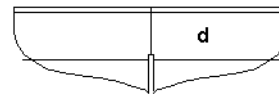
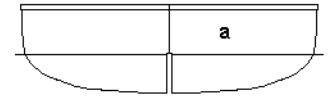
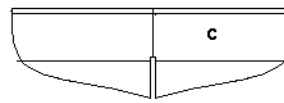
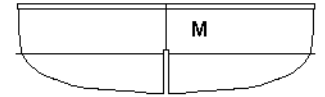
Características del Buque

Eslora: 51 m
Manga: 6 m
Puntal 1,83 m
Calado: 0,85 m
Velocidad 14,5 nudos
Capacidad de pasajeros 105

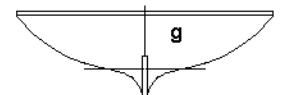
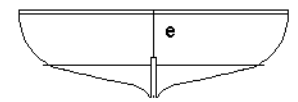
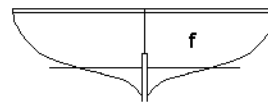
Escala del Modelo 1:150



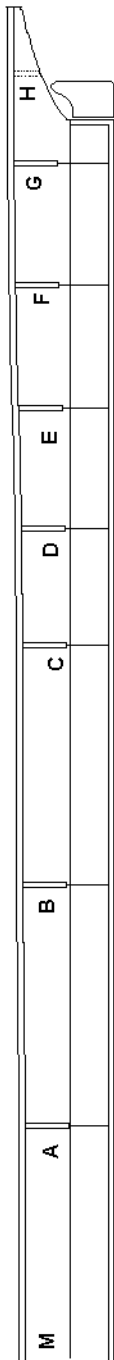
A-2



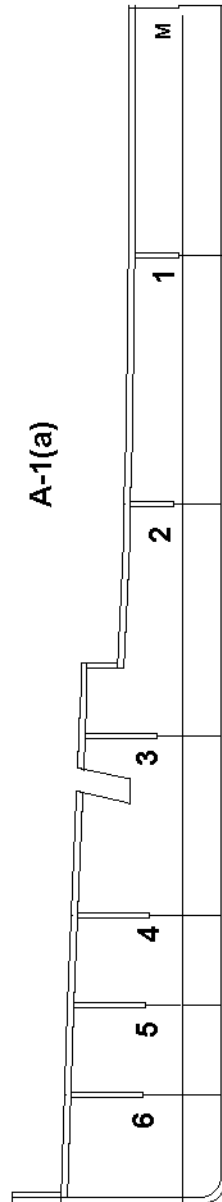
A-2



A-1(b)



A-1(a)



MODELISMO NAVAL
URUGUAY

Vapor "Surubí"



2 centímetros

Graf - 01

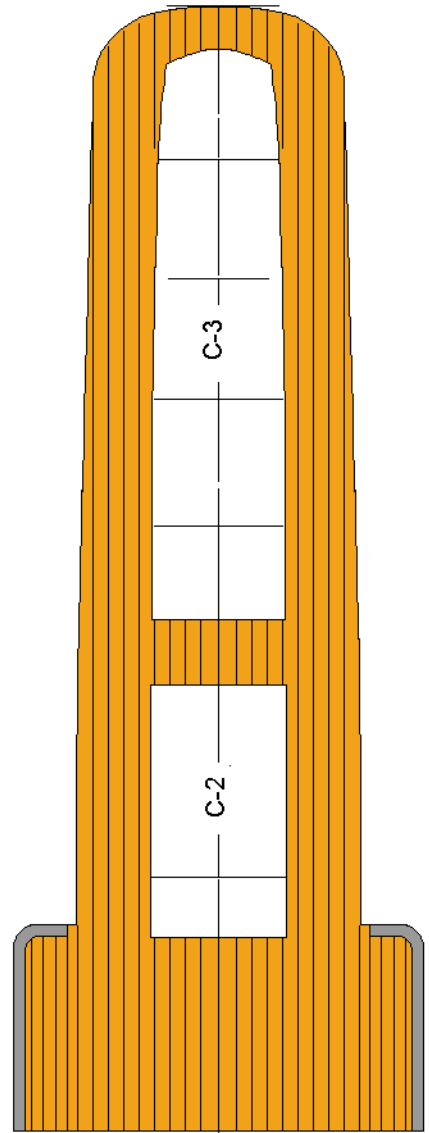
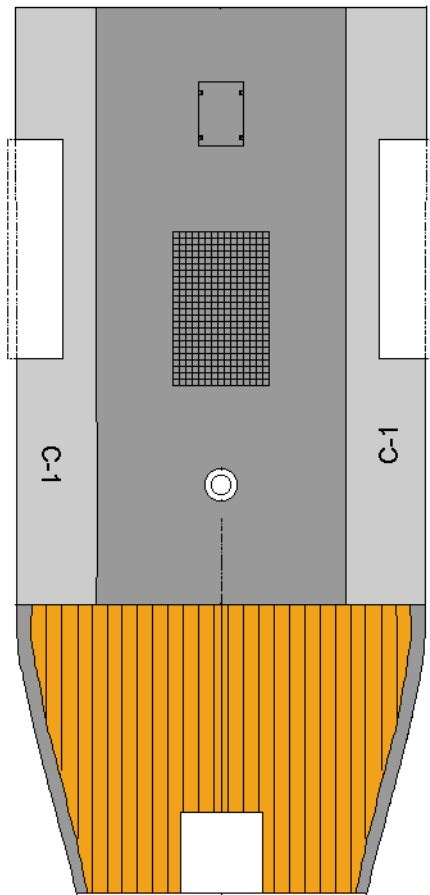
MODELISMO NAVAL
URUGUAY

Vapor "Surubí"

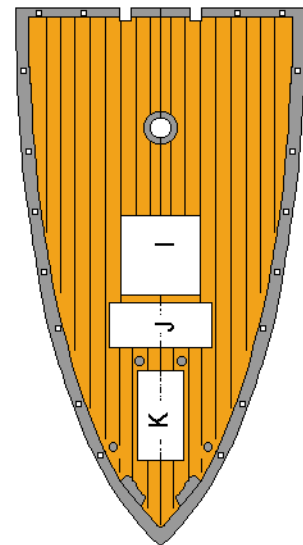
B-2(b)



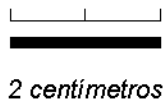
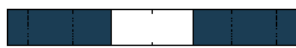
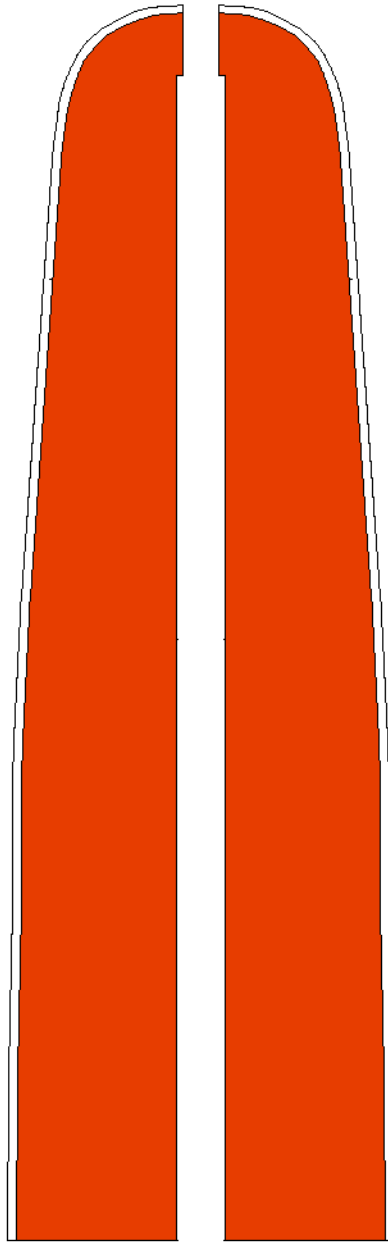
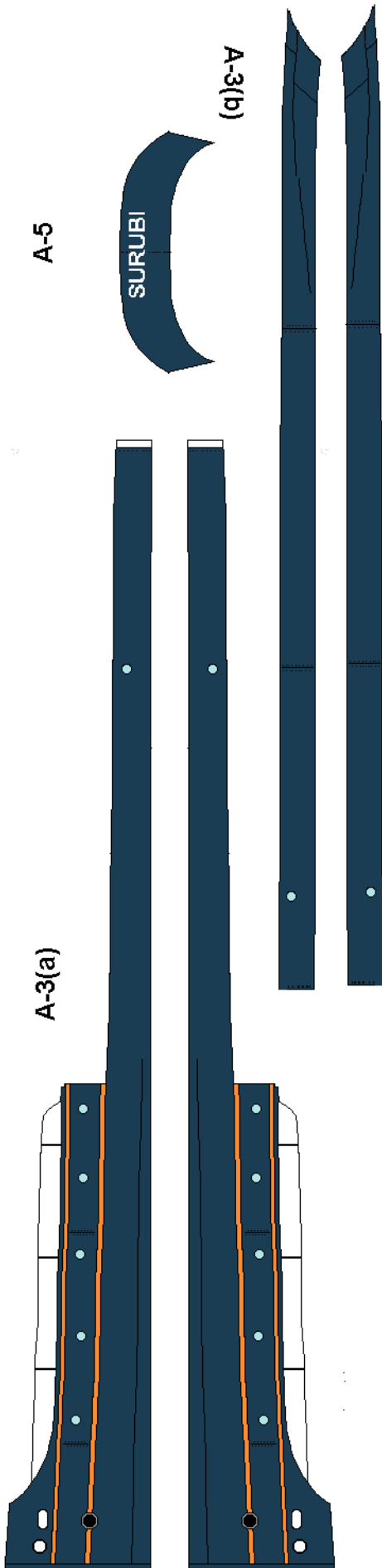
B-2(a)



B-1



Graf-02



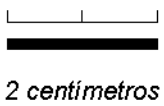
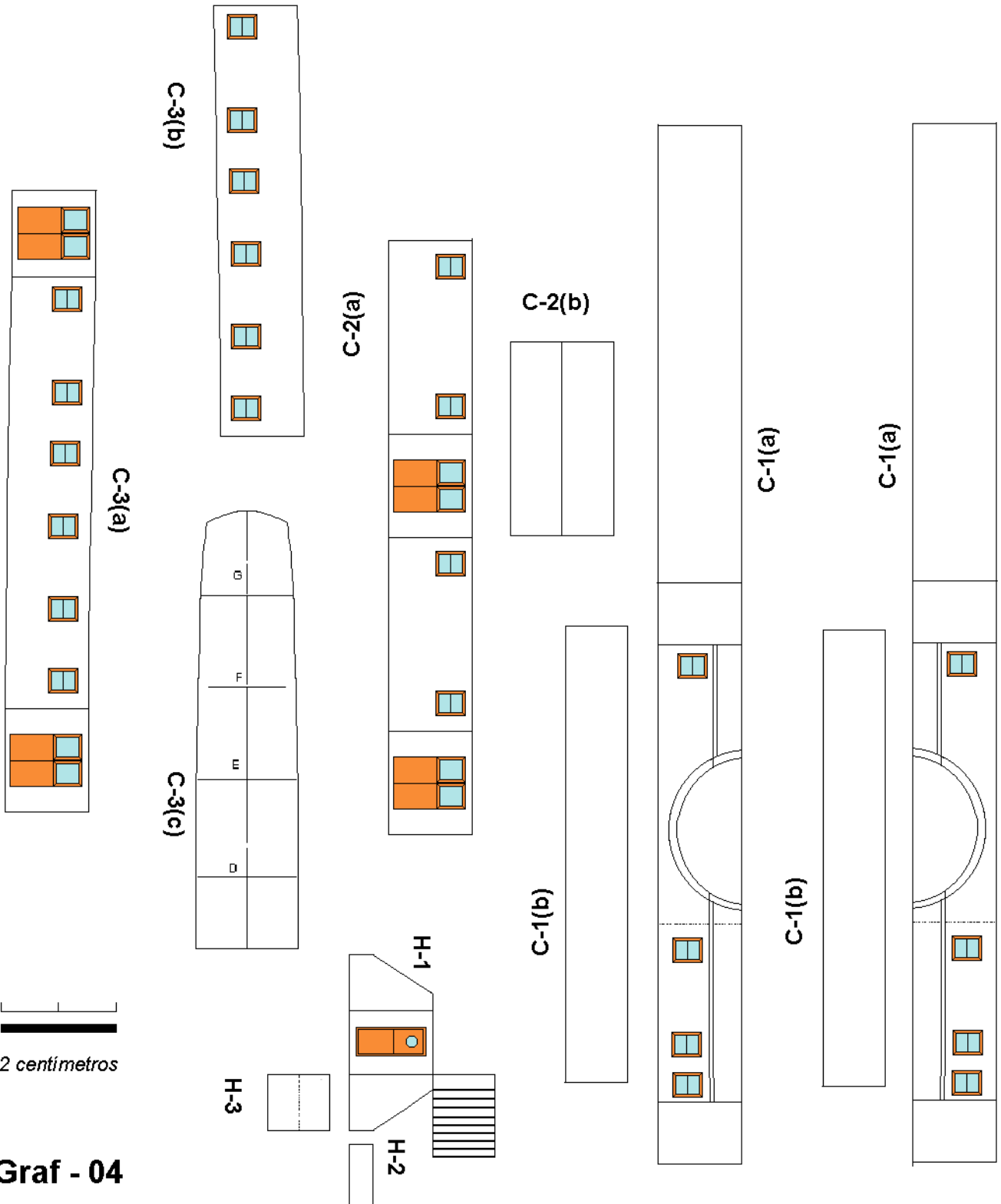
MODELISMO NAVAL
URUGUAY

Vapor "Surubí"

Graf - 03

MODELISMO NAVAL
URUGUAY

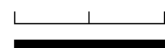
Vapor "Surubí"



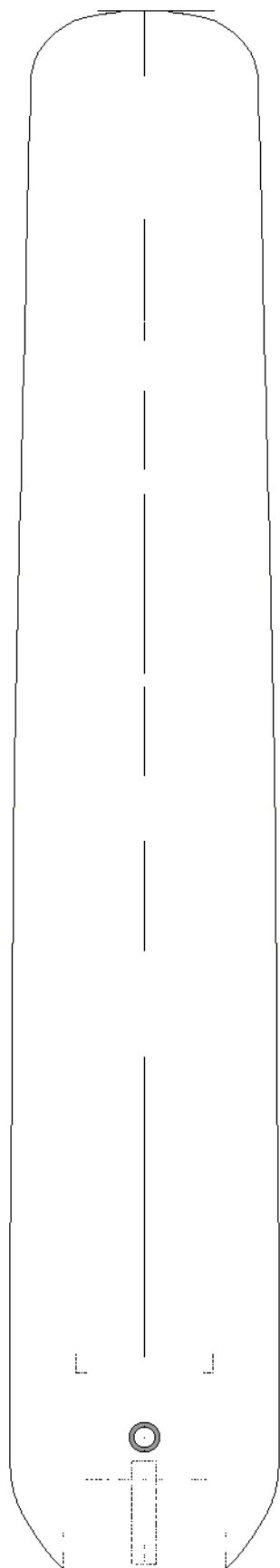
Graf - 04

MODELISMO NAVAL
URUGUAY

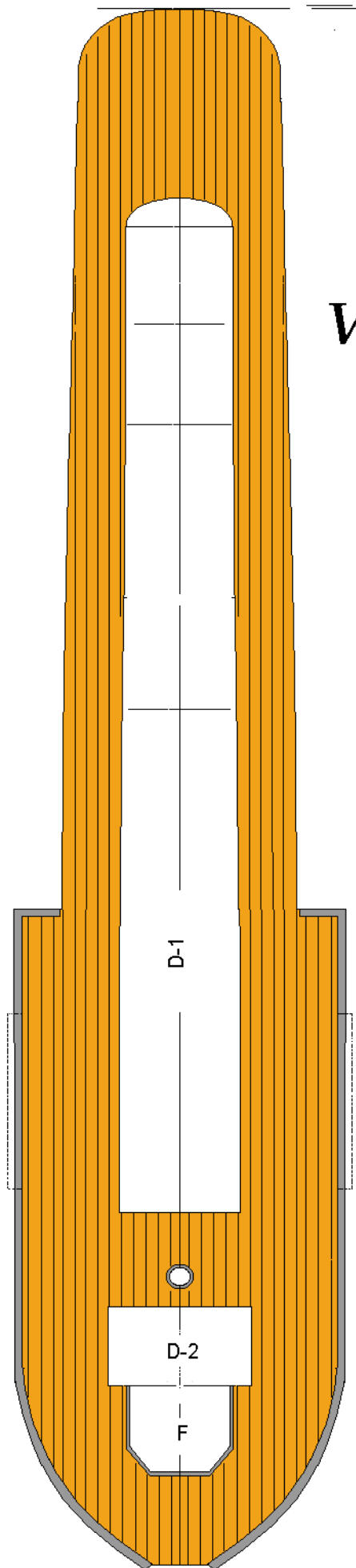
Vapor "Surubí"



2 centímetros



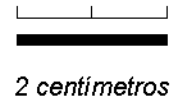
G-1



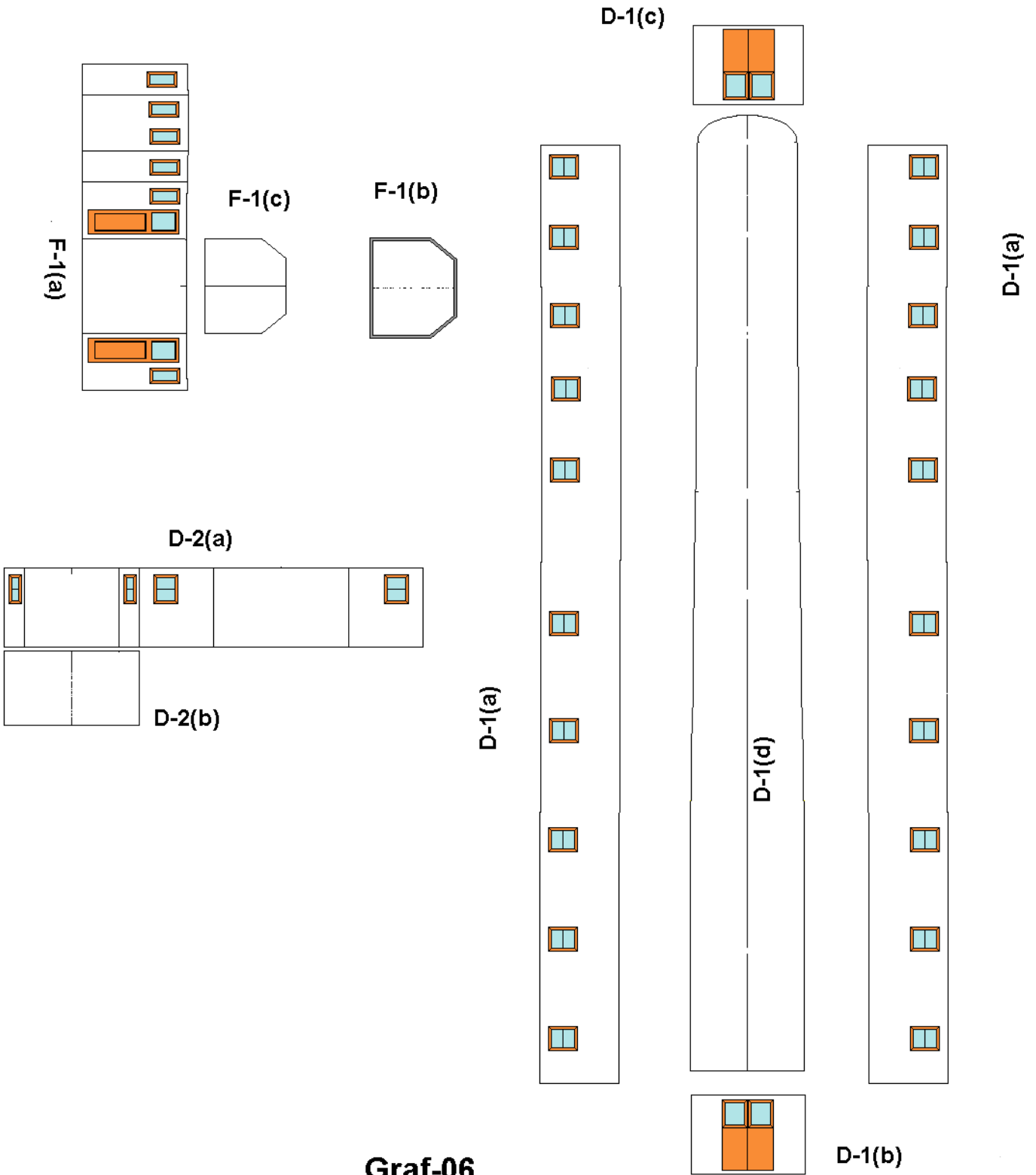
E-1

Graf - 05

MODELISMO NAVAL
URUGUAY



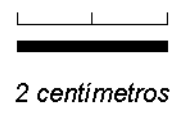
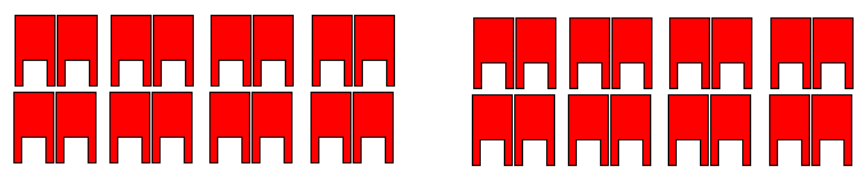
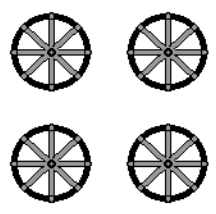
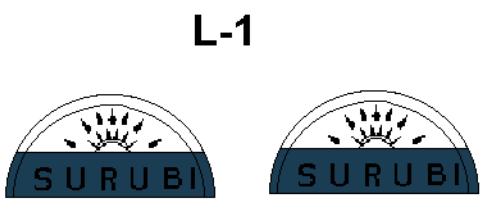
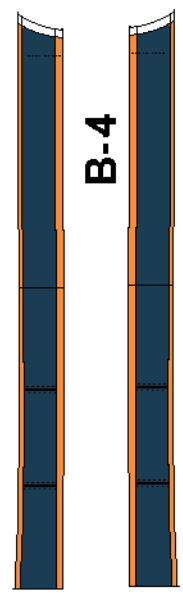
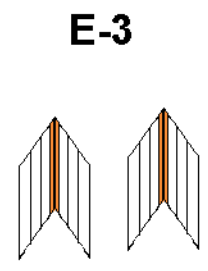
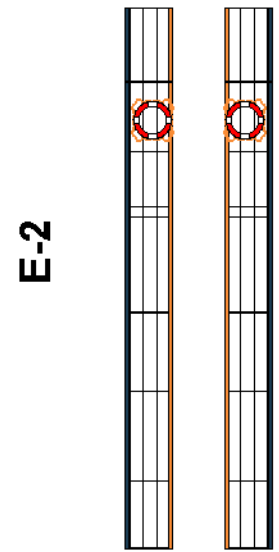
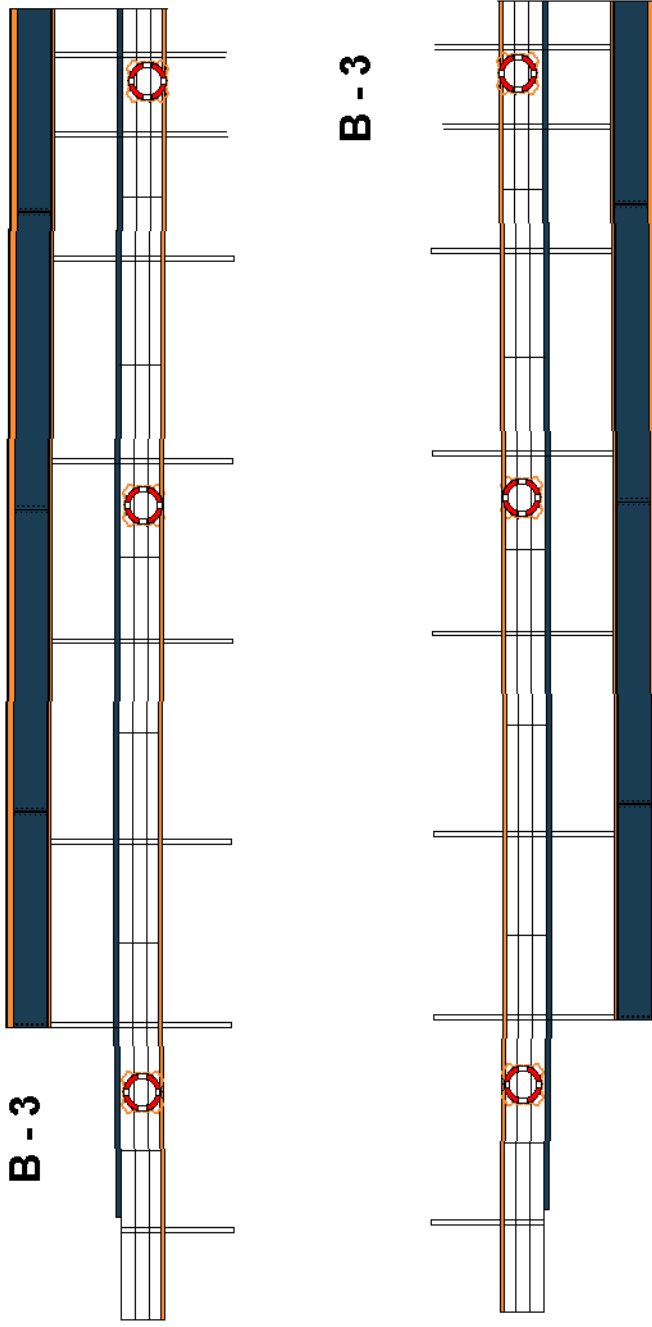
Vapor "Surubí"



Graf-06

MODELISMO NAVAL
URUGUAY

Vapor "Surubí"

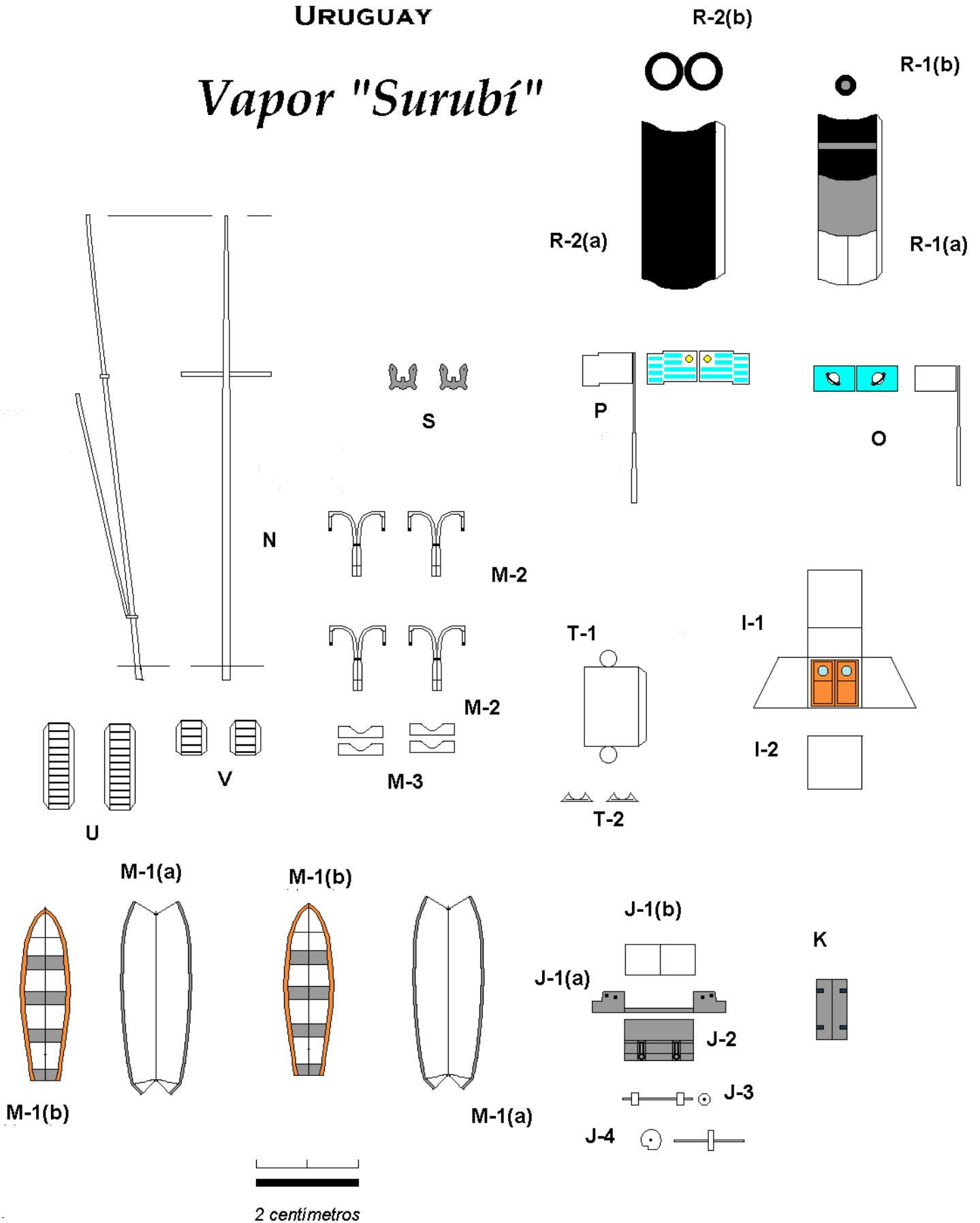


Graf - 07

L-2(b)

MODELISMO NAVAL
URUGUAY

Vapor "Surubí"



Graf - 08