



*Welcome to*  
*1<sup>st</sup> Mount Waverley*  
*Scout Group*

Welcome to 1<sup>st</sup> Mount Waverley. Now that you are the parents of a NEW CHUM (the name we give to members who have recently joined the Cub Scout Pack, but haven't been invested yet) you will probably have lots of questions to ask about Cub Scouting, as well as wanting to know how you can help them enjoy and benefit from their time as a member of world-wide Scouting.

## **OUR AIM, PRINCIPLES AND METHODS**

The Aim of the Scout Association is to encourage the physical, mental, social and spiritual development of young people so that they may take a constructive place in society as responsible citizens.

The Principles of Scouting as identified by the Founder, Lord Baden Powell, are that Scouts should serve God, act in consideration of the needs of others and develop and use their abilities to the betterment of themselves and their families and the community in which they live.

The Scout Association achieves its Aim through a system of education. The principle elements are:

- Voluntary membership of a uniformed group which, guided by adults, is increasingly self-governing in its successive age groups.
- Commitment to a code of living as expressed in the Promise and Law.
- Provision of a wide range of attractive, constructive and challenging activities, including opportunities for adventure and exploration both indoors and outdoors.
- Provision of opportunities for leadership and responsibility.
- Learning by doing
- Encouragement of activity in small groups
- An award scheme which encourages participation in its full range of activities and provides recognition of individual achievements.

We hope to help them achieve this by providing games, activities and challenges appropriate to their age in a varied weekly programme of activities where 'learning through play' is the main method employed.

## **CUB SCOUTING IS FUN !**

You can help your child by taking an interest in their life as a Cub Scout and taking opportunities to work with them on tasks they may wish to do at home. While we are hoping that your child will be able to complete some Cub Scouting activities single-handed, at times they may look for your guidance and support. Scouting is not a child-minding organisation but a training organisation. You will see that Cub Scouting reinforces the training for life that your child receives at home, school and church, in that it focuses on duty to their God, honesty, fair-play, teamwork and respect for others among the values it promotes. One of the principal differences between Scouting and other youth organisations is the adherence to the ideals expressed by the Law and Promise. It is a condition of membership that the new youth member accepts the Law and Promise.

The Cub Scout Promise is: *On my honour, I promise that I will do my best  
to do my duty to my God and the Queen of Australia  
to help other people and to live by the Cub Scout Law*

The Cub Scout Law is: *Cub Scouts are Loyal and Obedient  
Cub Scouts do not give in to themselves*

These ideals are:

- A belief in God and recognition of place of the Queen of Australia
- Help other people - becoming useful, considerate members of society.
- The meaning of Loyalty: to their Promise, to the Scout Association and to each other,
- Obedience to those in authority
- Unselfishness, Self-discipline, teamwork and perseverance are further traits which the Association attempts to instil into its members.
- The overall programme attempts to develop favourable, positive attitudes to these ideals.

## THE CUB-SCOUT PACK

In the Pack, the members are organised into groups called SIXES with approximately six Cub Scouts in each. Our Sixes have the colours Black, Grey and Tawny and are designated by the circular colour patch worn on their left shoulder. Each Six has a youth leader called a SIXER and a deputy called a SECOND. These positions are usually filled by the older members of the Pack who are appointed by the Cub Scout Leaders and are based on age, experience, attitude and ability and have certain responsibilities associated with them to further their Cub Scout leadership training. (e.g. preparing the flag for flag break, looking after the New Chum and assisting in other small ways). These Cub Scouts are distinguished by the gold badge worn on their uniform. We are able to have 24 children in our Cub Scout Pack at any one time.

## FEES

Cub Scouts pay an annual fee each financial year which covers registration, insurance, hall running costs and leader training. A proportion of this annual fee (known as 'Subs') are used to purchase consumable equipment used at Cub-Scout meetings such as handcraft materials, paper, pens etc. special functions, activity subsidies and other minor expenses. Annual fees are required to be paid by 30<sup>th</sup> June each year. A pro-rata amount is charged for members joining part way through the year.

## THE LEADERS

The Uniformed Leaders in the Scout Association are not paid for their time and all work that they do in the Group is voluntary. The Pack is run by adult leaders who have undergone youth training as specified by Scouts Australia. This training includes courses run at weekends, as well as in-service training with another Pack in the District. A pre-requisite of adult leader training is a police clearance and acceptance of the "Policy and Rules" and "Code of Conduct / Duty of Care" of Scouts Australia. All adult members of Scouts Australia are required to have a Victorian Working with Children Card. Some leaders may have undertaken additional courses such as a first aid certificate, Pack Holiday certificate, Camping Certificate or Leader Trainer courses.

Cub Scouts know their leaders by names taken from Kipling's JUNGLE BOOK. The leader in charge of the Pack is called the Cub-Scout Leader (CSL) and is known as AKELA. Other leaders are called Assistant Cub Scout Leaders (ACSL). As well we may have other leaders who are in the process of completing their training and sometimes a young person (15-18 years) who is called a Cub Scout Instructor (CSI). These are the people involved with our Pack at present:

CSL	Mike Wright	(Akela)	0422 282 746	wfamily@dodo.com.au
ACSL	Andrew Carland	(Bagheera)	0418 145 974	adcarland@hotmail.com
ACSL	Matt Geehman	(Baloo)		

Parents are invited to talk to the Leaders about any matters which concern them. Often it may be difficult to have more than a few words before or after the Pack meeting as these are busy times for the leaders. Do not hesitate to call the leaders at home, when there is more chance to talk for a longer period of time. We also appreciate your courtesy in phoning to notify us if your Cub Scout cannot attend a meeting or outing (Cubs can be encouraged to make this phone call themselves). Leader's phone numbers can be found at the end of the "Chronicle", the Cub Scout section's monthly newsletter

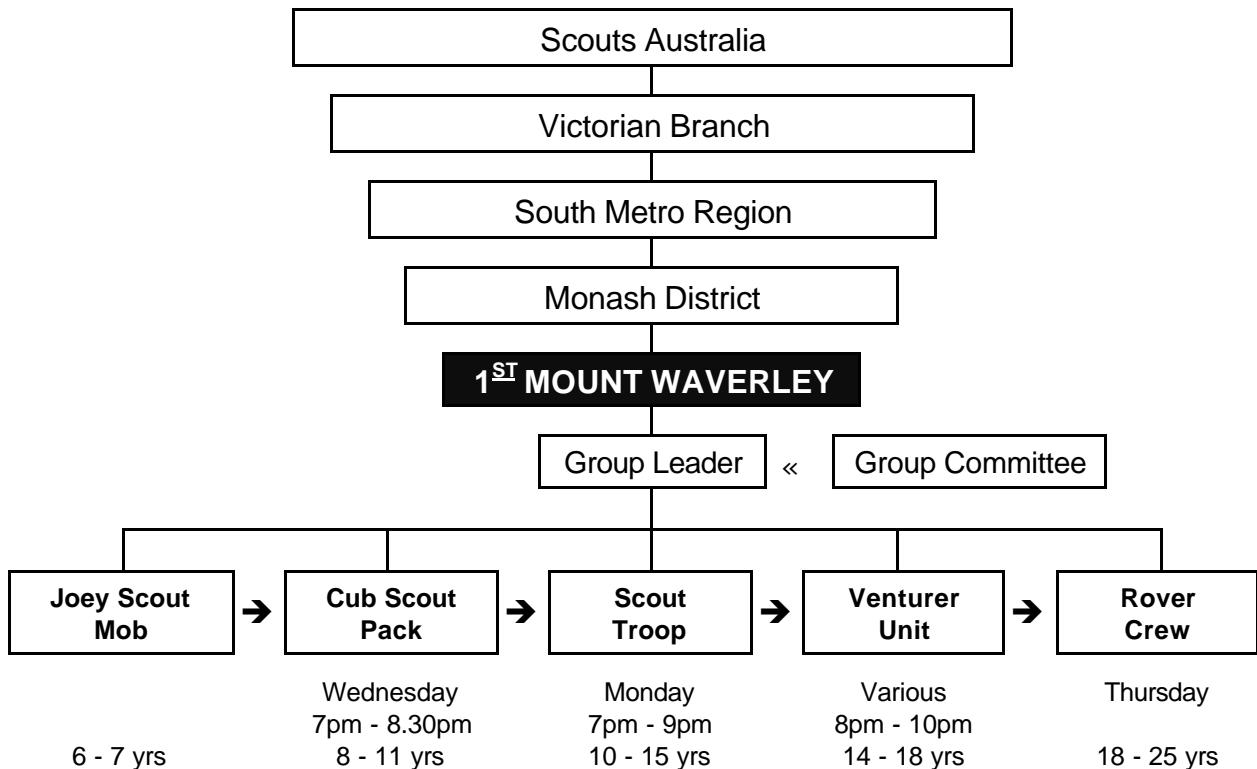
Lord Baden-Powell, the Founder of the Scouting movement in 1908 recommended that any pack should have one WARRANTED (trained) leader for each six youth members. We hope that you might consider becoming a Leader, so that we can have the personnel to provide the BEST possible Cub Scouting experiences for the Cub Scouts (YOU would have a lot of FUN too !!!)

## THE GROUP

Your child will be part of the Cub Scout section of the 1<sup>st</sup> Mount Waverley Scout Group. 1<sup>st</sup> Mount Waverley was formed by the amalgamation of 8<sup>th</sup> and 10<sup>th</sup> Waverley groups in October 1996. It was joined by members from the former 3<sup>rd</sup> Waverley and 2<sup>nd</sup>/5<sup>th</sup> Waverley Groups in 1998.

Our Group consists of the following sections:

- 1st Mount Waverley Cub Scout Pack meets on Wednesday (7pm to 8.30pm)
- 1st Mount Waverley Scout Troop meets on Monday (7pm to 9pm)
- Group Committee consisting of parents like yourselves.



A vital part of our group's existence is the GROUP COMMITTEE, composed of parents and friends who meet once a month during the year at GROUP COMMITTEE meetings. The main responsibility of the Group Committee is financing the group's activities, especially the provision of equipment as well as Leader recruitment and youth membership recruitment. The Group Committee also arranges social functions and fund raising during the year for families within the group.

To enable the Group property to be developed and maintained as well as supplying finance for equipment for all Sections, the Group Committee hold regular Working Bees and Fundraising activities and all parents are expected to assist with these.

You will be asked to assist in different ways from time to time. Our hall is kept clean by the efforts of families through a cleaning roster. You will probably only have to do this about twice a year. New committee members are appointed at the Annual General Meeting which is usually held about August.

The key person in the group is the GROUP LEADER (GL) who presides over the monthly meeting of the GROUP COUNCIL (leaders from all sections) and liaises with the Group Committee on behalf of the Leaders. The Group Leader is in charge of the uniformed leaders and the Group Committee and is like a company branch manager.

Our Group Leader (Acting) is Mike Wright

## CUB SCOUT AWARD SCHEME

An important part of Cub Scout activities is the award scheme. Your child will soon want to earn some badges to wear. The main badges that your child will aim to achieve are the BOOMERANG Badges. In general:

- Cubs aged 7 & 8 years work towards the BRONZE Boomerang
- Cubs aged 9 years work towards the SILVER Boomerang
- Cubs aged 10 years work towards the GOLD Boomerang



The requirements for these tests are set out in the “Cub Scout Record Book” (available from Snowgum shops). There will be opportunities for Cubs to pass the tests during the activities of the weekly meetings, but you can take an interest in your child's progress and encourage your child to practice various parts of the tests at home. The tests must always be signed for satisfactory completion by a leader. Parents are asked not to sign the passport, but report successful completion of any assigned tasks to a leader.

The requirements are also on the internet at [www.vicscouts.asn.au/Cubs/Awards/](http://www.vicscouts.asn.au/Cubs/Awards/)

In addition to the Boomerangs, Cub Scouts can work to pass some of the thirty-four ACHIEVEMENT BADGES. Each badge has two levels Green (easier) and maroon (more challenging). The work for these badges helps to widen your child's interests and to explore and develop new skills. It is not intended that any Cub Scout will pass all of the achievement badge tests, in fact there are limitations placed on the number of achievement badges able to be gained before the appropriate Boomerang is earned. Sometimes activities, such as a swimming night, will be arranged so that each child who attends has the chance to earn an achievement badge. The requirements for these badges and a number of special badges are also listed in the “Cub Scout Record Book”



The ultimate award for a Cub Scout is the “Grey Wolf” which can be earned by older Cub Scouts. This involves a lot of work and a goal for the high achievers.

Each year badges can be earned for participation in events such as Activity days, Region Days and Jamboree on the Air. These events usually occur outside the normal pack meetings and you will be advised of these in advance.



## OUTINGS

Other activities which may take place at other times than the normal weekly meetings include:

- A Pack Holiday Weekend
- A Ten-year-old camp or Sixers/Seconds Camp
- A Sleep Over
- Outings with other Cub Scout packs
- Combined meetings with other sections (such as the Joey Scout Mob or Scout Troop)
- Day outings on weekends
- Outing to places of interest on normal Pack meeting nights

You will be given advance notice of these special events. If you have any questions you are very welcome to discuss them with the leaders.

Often notices for these events will have a reply slip attached or a request for a deposit. Please ensure that the reply and deposit is returned by the date requested as the leaders need to make arrangements for the outing such as bookings and transport. A limited response may cause the activity to be cancelled. Many reply forms will refer to the Y1 membership form. This is the membership form that you need to complete when your child starts Cub Scouts.

## UNIFORM

Until your child is invested into the Cub Scout Pack (about 6-8 weeks after starting Cubs) the only uniform is a white scarf for New Chums or Group scarf for Joey Scouts. The scarf should be worn to all Pack meetings and activities.

You will be advised in good time as to the date of your child's investiture so that you can arrange for the purchase of the uniform. Uniform items are available from Snowgum at The Glen Shopping Centre, Springvale Rd, Glen Waverley – Phone 9886 7045

Snowgum also has shops at:

Greensborough	Hawthorn	Malvern	
Maribyrnong	Melbourne City	Mitcham	Moorabbin

Snowgum provides blue pants to match the uniform however appropriate uniform style shorts or trousers can also be obtained from department stores or school uniform suppliers. A hat is required for all daytime outdoor activities, especially in terms 1 and 4.

The Uniform requirements are ...

- Shirt** – Dark blue Scout pattern with yellow sleeves. (from Snowgum)
- Shorts or Trousers** – Navy blue or grey (Not tracksuit pants, camouflage pants or Jeans)
- Belt** – (For shorts / trousers with belt loops) Scouts Australia metal buckle (from Snowgum)
- Hat** – Scout peaked cap or bucket hat (Optional - from Snowgum)
- Socks** – Plain colour to match shorts or trousers.
- Black or brown shoes or boots** (Thongs or sandals must not be worn to Scouting Activities)
- Fleece Jacket** – (Optional) Navy Scout pattern (from Snowgum).
- Cub Scout Record Book** (from Snowgum)
- Group Scarf** (Maroon with emerald and gold edging) and woggle (Provided by the Group.)

**Please ensure that all items of uniform are named**

The uniform is designed to be practical and durable and Cub Scouts are encouraged to take a personal pride in their appearance by wearing the uniform tidily and cleanly. Unless advised otherwise, Cub Scouts should wear full uniform to all Scouting activities.

## YOUR CHILD'S INVESTITURE

The investiture ceremony is a most important occasion for your child and he or she will usually want you to be present when they become a Cub Scout. Your child will let you know when the investiture is to be and whether he or she wants you to be present. Most children are only too proud to have Mum, Dad, Brothers, Sisters and Grandparents attend, but we encourage the child to make the decision as to whom he or she wishes to invite. At the investiture ceremony you are encouraged to sit close and take photographs of this significant occasion if you wish. Generally we try to arrange the ceremony for a time and date that suits the child's family.

On the night your child is to be invested he or she will wear their Cub Scout uniform for the first time. He or She should arrive at the hall wearing uniform. If they are linking from the Joey Scout Mob they will already be wearing the Group Scarf. Their hat should be handed to the Leader as it will be presented during the ceremony. If they have not been a Joey Scout the white scarf should be handed to the Leader upon arrival. After the investiture, when your child is presented with the various badges they are entitled to wear on their uniform, you will be able to help them sew the badges in the appropriate places on the uniform. The illustrations on the back page will guide you in placing each badge.

## PARENTS AND SCOUTING

We welcome you to enjoy with your child the experiences that Scouting has to offer. You are vitally important to the Scout group and without your efforts the work of the movement could not continue. You can see that there are plenty of opportunities for you to share in the pleasure of Cub Scouting by:

- Taking an interest in what your child is doing.
- Assisting with section activities and helping with transport to and from outings
- Letting us know of your own special interests and talents (you may like to share your interests with the Pack)

You too have several obligations to the Scout group. These include payment of yearly and term fees, assistance with fund-raising, hall cleaning roster (about twice a year), hall working bees and attending the Annual General Meeting.

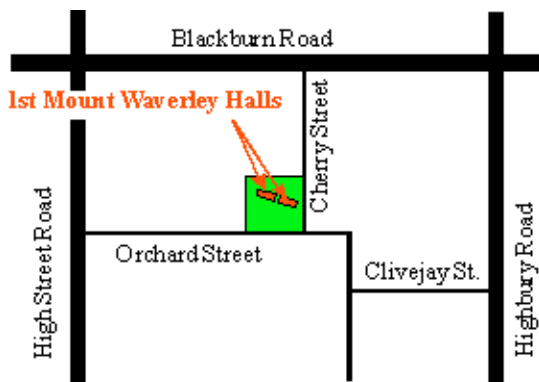
During your association with 1st Mount Waverley you will also be expected to serve on the Group Committee or sub-committee for at least one year, or become a leader. We understand that everyone has very busy lives however if every parent gives a little of their time then the group will function well.

The Scout Association is in constant need of adult leaders, usually parents like yourselves, who are prepared to make a contribution. No skills are required - just a willingness to learn. The training given to a new leader is painless and fun, there is vast satisfaction in knowing that one is contributing to the development of the coming generation, and it is an enjoyable hobby. Any uniformed leader can give you information on what is required and how to make a start.

**"Remember...Scouts is NOT a baby sitting club, your participation is vital to its existence"**

## HALL LOCATION

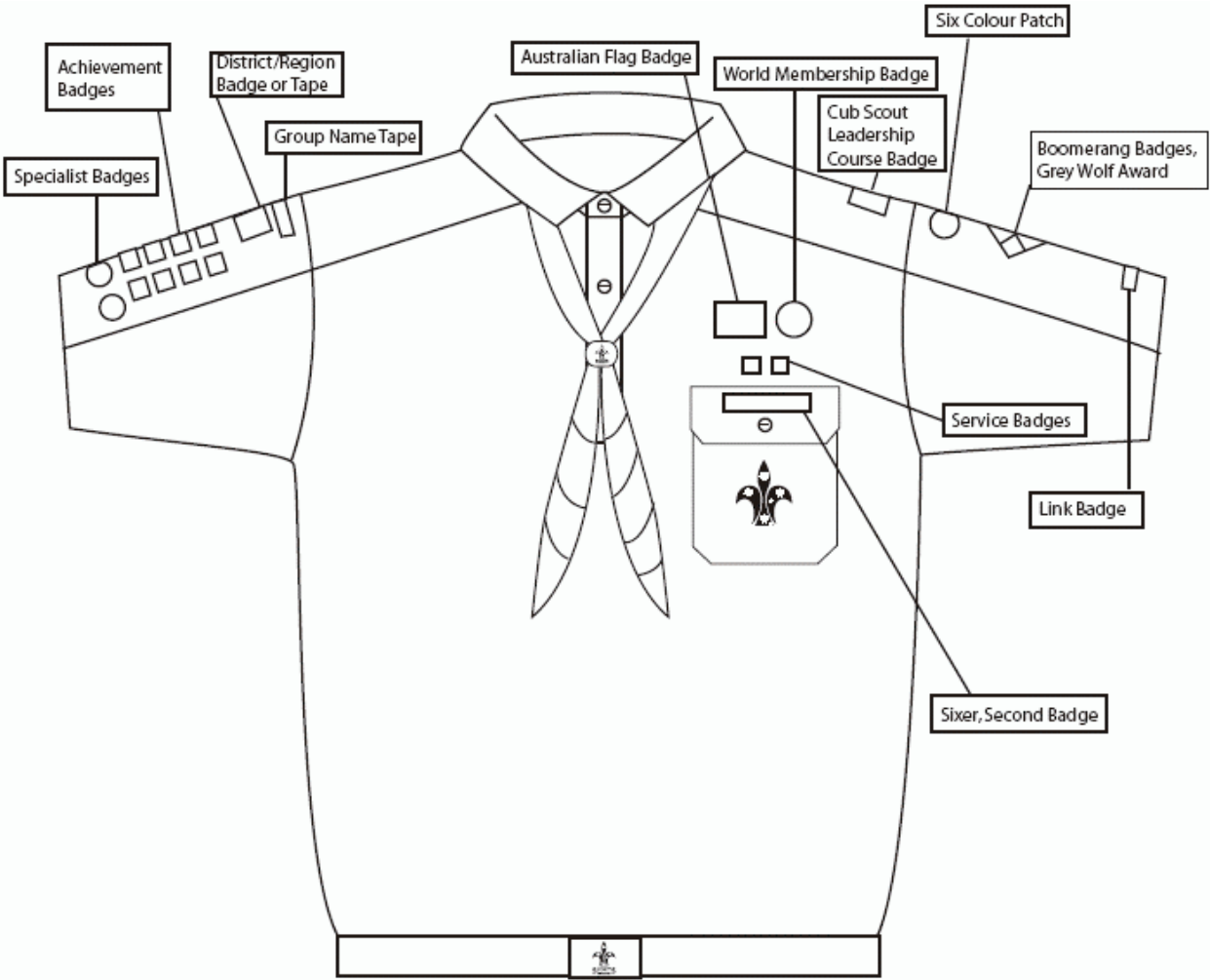
Our Hall is located on the corner of Cherry and Orchard Street, Glen Waverley  
Melway's map 62 reference A10



See the Pack's web site at [http://www.geocities.com/cubs\\_1stmtwav/index.htm](http://www.geocities.com/cubs_1stmtwav/index.htm)

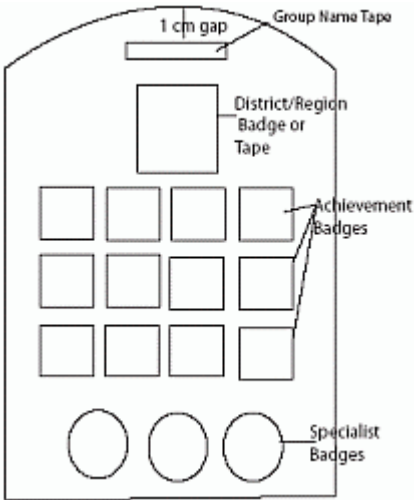
*We hope that you, your child and your family thoroughly enjoy being members of  
1<sup>st</sup> Mount Waverley Scout Group*

# CUB SCOUT BADGES

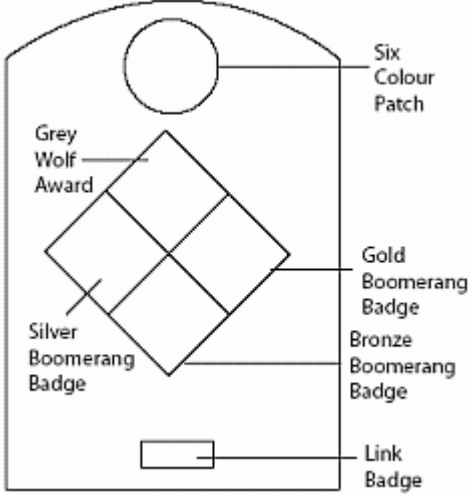


Right Sleeve

Left Sleeve



1<sup>st</sup> MOUNT WAVERLEY  
MONASH DISTRICT



Revised: January 2008