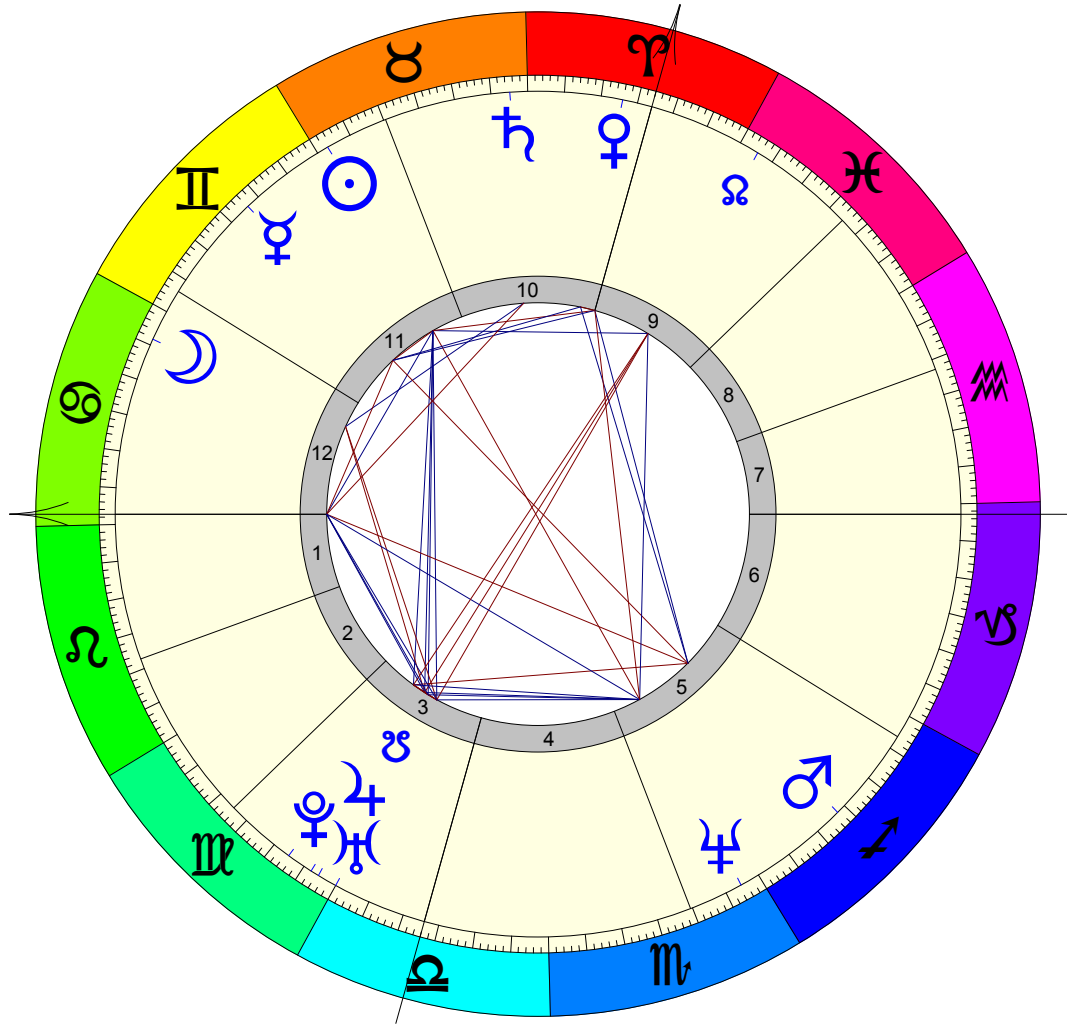


Audra Krug	Monday	Placidus	Weak Orbs
	5/19/1969 9:58:00 AM	Time Zone: 5:00W	Summer Time: 1:00
	Morristown	New Jersey	40N47 74W36

☉	Sun
☾	Moon
☿	Mercury
♀	Venus
♂	Mars
♃	Jupiter
♄	Saturn
♅	Uranus
♆	Neptune
♇	Pluto
♁	N. Node
♂	S. Node
♈	Aries
♉	Taurus
♊	Gemini
♋	Cancer
♌	Leo
♍	Virgo
♎	Libra
♏	Scorpio
♐	Sagittarius
♑	Capricorn
♒	Aquarius
♓	Pisces



♌	Semisquare
*	Sextile
□	Square
△	Trine
▣	Sesquisquare
⋈	Quincunx
♁	Opposition
A ^{SC}	Ascendant
D ^{SC}	Descendant
M ^{Co}	Medium Coeli
I ^{Co}	Immum Coeli
R _X	Retrograde

A ^{SC}	28.35	♋
2	18.35	♌
3	12.34	♍
I ^{Co}	12.59	♎
5	19.43	♏
6	26.51	♐
D ^{SC}	28.35	♑
8	18.35	♒
9	12.34	♓
M ^{Co}	12.59	♈
11	19.43	♉
12	26.51	♊

	☉	☾	☿	♀	♂	♃	♄	♅	♆	♇	♁	A ^{SC}	M ^{Co}
☉			♂			△		△	♂	*	△	*	∟
☾			13.28			2.17		1.36	1.07	5.58	1.08	0.10	0.24
☿						8.03	*	1.45	4.10				
♀				*	♂							∟	*
♂				5.10	1.51							1.42	1.07
♃					△								4.01
♄					3.19							□	△
♅												0.08	0.43
♆													
♇													
♁													
A ^{SC}													
M ^{Co}													

☉	28.24	♉		11
☾	4.10	♋		12
☿	11.53	♊	R _X	11
♀	17.02	♈		10
♂	13.44	♎	R _X	5
♃	26.07	♍	R _X	3
♄	2.25	♉		10
♅	0.01	♌	R _X	3
♆	27.18	♎	R _X	5
♇	22.27	♍	R _X	3
♁	27.16	♈		9
♂	27.16	♍		3

Life Path

Close

PROFESSIONAL - LIFE-PATH: Emotional attachment

You are a hard-working and ambitious person, intent on building security in your professional and personal life. You are strongly motivated to get ahead, and very emotional in your way of going about your tasks. As a caring person, you may wish to work helping people grow and develop, but you also have business talents. Though very changeable in mood, you prefer the safe option, and are always strongly motivated by family considerations. Though ambitious you are soft and considerate, not liking to tread on other people's toes. You prefer to see your partner play the tough or dominant role, while you keep yourself in the background. When threatened you retreat into yourself. Under your rather private facade you are vulnerable and can be easily hurt. You may find yourself involving the family in your professional life.

PERSONAL - LIFE-PATH: Emotional attachment

Emotional development is the keyword in your evolution as a human being. You form powerful emotional attachments and tend to become rather dependant. There may be a particularly strong attachment to the mother or family. Learning to let go of old attachments will be an important challenge in your life. You have access to the whole spectrum of human emotions. You are very sensitive and easily hurt, yet at the same time you show a lot of concern for others. In intimate relationships you form strong bonds and tend to smother your partner, who may respond by demanding more maturity and independence in you. You force other people to create barriers against the tide of your emotions. It is important for you to learn to deal with rejection, as you are oversensitive in this area. Being a strongly emotional person, you also have access to the deep well of the unconscious, and this gives you considerable intuitive talent.

Ascendant Sextile Sun

This aspect is extremely powerful in your horoscope; every action you take will be coloured by this energy.

When reading the following text, please bear in mind that you will for the most part experience only the positive effects of this aspect. You are particularly stimulated to learn and communicate, as regards the matters concerned.

PROFESSIONAL - LIFE PATH: I, myself, me

Whether you would prefer to have a low profile or not, you will often dominate your surroundings through the force of your personality. Professionally you strive to do your very best - for success is a matter of honour for you. You have a magnanimous disposition, and are generous in your dealings with others. Creative work and self-expression must be an important element in your professional life. You stand on your pride too much.

PERSONAL - LIFE PATH: I, myself, me

You have a radiant personality, with a touch of self-importance. You take yourself - and the impression you make on others - very seriously indeed. Some people may consider you self-centred. You tend at least to be the centre of attention, and although you invest all of yourself when you relate to others, you give your own personal development needs priority. You have plenty of surplus energy, and your playful nature can make you a figurehead for young people.

Ascendant Semisquare Mercury

This aspect is of medium strength and its influence will often be felt, though not acutely.

The semisquare aspect shows a difficult streak in your character, which may manifest as an unconscious stubbornness in the matters concerned.

PROFESSIONAL - LIFE PATH: The messenger

You are a person of many talents, chiefly in the field of information and communication. Meeting people and creating contacts are a part of your professional life-style - you have a message to deliver, and you do so in a flurry of activity. Intelligent and informed, you keep yourself up-to-date on all the latest developments.

PERSONAL - LIFE PATH: The messenger

You are easy to make contact with, and always willing to exchange the time of day with anyone you meet. Easily distracted, you can find yourself getting involved in many things at the same time - but then you hate to be bored. You give the impression of being a person on the move. Being gregarious and talkative, you are an excellent catalyst for getting people together. You fascinate people with your ideas.

Ascendant Sesquisquare Mars

This aspect is extremely powerful in your horoscope; it will dominate many areas of your life.

The influence of this aspect is deeply unconscious and sporadic, though when felt it can manifest itself in uncompromising conflict with others.

PROFESSIONAL - LIFE PATH: Undiluted force

You display a rugged personality, and invest energy and enthusiasm in everything you do. An aggressive or overly defensive attitude brings out a competitive attitude in others. This will lead to a number of professional conflicts. You are ever-willing to take up the battle. Nevertheless you are effective in action as long as you are given the freedom to decide things for yourself. You are a good general, but a bad diplomat.

PERSONAL - LIFE PATH: Undiluted force

You create a forceful impression, and people have a tendency to be somewhat nervous when they are around you. Those who know you well will appreciate your forthrightness, but the meek and sensitive will avoid your company - not that you care. You are headstrong, reckless and therefore rather prone to accidents. You are basically frank and honest, so people know where they stand with you.

Ascendant Sextile Jupiter

Though not especially strong, you will be able to feel the influence of this aspect under many circumstances.

When reading the following text, please bear in mind that you will for the most part experience only the positive effects of this aspect. You are particularly stimulated to learn and communicate, as regards the matters concerned.

PROFESSIONAL - LIFE PATH: The counsellor

You are not interested in trivia, and therefore seek a profession which gives some kind of overall meaning. You are probably destined for success, and can exert considerable influence through the power of your opinions or good judgement. You have a tendency to overestimate the importance of your ideas, and may be unreceptive to the views of others. Generally, however, you maintain a fine perspective on the important issues. You are an excellent adviser.

PERSONAL - LIFE PATH: The counsellor

You are a larger than life character with strong views on most issues, and a deep interest in spiritual issues. You are open and willing to expand your philosophical horizons. Generally blessed with good fortune and an optimistic frame of mind, you have the ability to expect the best of the future. There may be a tendency to overindulge or be too extravagant. People value your ability to understand in depth the things that move them.

Ascendant Square Saturn

This aspect is of medium strength and its influence will often be felt, though not acutely.

There will be great difficulty in integrating these two planetary influences, and the promised harmonious results will only arise after you have expended time and effort.

PROFESSIONAL - LIFE PATH: The hard school

You take your professional life very seriously, rising to the many challenges that arise during the course of your career. As you convey an air of efficiency and self-discipline, you will gravitate towards positions of authority. Lack of self-confidence, and a certain shyness in relation to others can hinder your progress, but the older you get the better you are able to overcome your fears.

PERSONAL - LIFE PATH: The hard school

You can be rather an inhibited person - at least in the early stages of your life. Experience has made you wary in your dealings with others, and rather taciturn in style. You may feel uncomfortable about your personal appearance, and you have low expectations as regards your potential in life. Nevertheless you can inspire trust in others because of your considered, serious nature. The older you get, the more you lighten up.

Ascendant Sextile Uranus

This aspect is extremely powerful in your horoscope; it will dominate many areas of your life.

When reading the following description, please bear in mind that you are a fast learner and overcome any difficulties involved very quickly. You can expect to use this aspect constructively and harmoniously.

PROFESSIONAL - LIFE PATH: Light of the future

You bring the spirit of renewal and innovation into whatever projects you involve yourself with. You are strongly motivated by social visions, and are keen to instigate change. You may have some problems accepting the status quo, and this can lead to a certain alienation in society. You have a talent for dealing with New Age interests, technical matters or people from unusual environments.

PERSONAL - LIFE PATH: Light of the future

You can feel that your role in life is connected to future visions and the necessity for change in society. You add a dash of originality to the world, and people are either inspired or provoked by your rather unusual personal style. You shake up your surroundings and often use shock tactics to make an impression. You thrive in an atmosphere of excitement and unpredictability.

Ascendant Trine Neptune

This aspect is extremely powerful in your horoscope; every action you take will be coloured by this energy.

Please bear in mind that the contact between these planets is harmonious, which means that you will rarely be troubled by their negative influences. They represent a resource you can draw from.

PROFESSIONAL - LIFE PATH: The spiritual path

You are rarely motivated by purely ambitious interests, and therefore you function best when engaged in a job in which you can invest your ideals and dreams. Ordinary goals can hardly satisfy your needs, which are more orientated towards feelings and sensitivity, or music and creativity. You need to feel moved by influences beyond the personal.

PERSONAL - LIFE PATH: The spiritual path

It is important for you to overcome a subtle feeling of dissatisfaction or sorrow in your life - both in connection with the direction your life takes, and in connection with partners. This involves finding a sense of meaning in your existence. Creative or spiritual interests, and the pursuit of inner purity, can bring much needed inner harmony. You are very impressionable and easily influenced by the vibrations of other people, so you need to indulge in periods of withdrawal.

and**PROFESSIONAL - EMOTIONS: Create a secure atmosphere**

You are a super-sensitive person with a deep need to feel safe and secure. You form close bonds to the people you like, but you can take an instinctive dislike to some people. Generally however your instincts and professional intuition are very accurate. You have strong feelings and are a very caring person indeed, and this may be reflected by the kind of work you choose. You are a loyal and supportive friend and colleague as long as your security is not threatened. You are very attached to past gains; to get ahead it is important to let go of the past. You would thrive in a caring role, and in businesses connected with security and property. Family business may appeal to you.

PERSONAL - EMOTIONS: Create a secure atmosphere

Your deep feelings are a powerful driving force for you - many of your actions are motivated by a need to protect yourself and those closest to you. Family bonds - particularly to the mother, home and family - are of the utmost significance - and it is in the nature of things that you will experience a good deal of emotional pain as you mature and close bonds are broken. You can be very moody and this has a powerful effect on your emotional environment. Overcoming possessiveness based on dependence, and resisting the tendency to make others dependent on you through emotional manipulation and over-protectiveness, are essential stepping stones towards developing a greater inner self-sufficiency.

Please enter (M)ale or (F)emale**PROFESSIONAL - EMOTIONS: Inner refuge**

You do not function well in the hurly-burly of the market place. On the other hand you can feel very comfortable when you can express your professional talents in a remote or out-of-the-way environment. As you also are extremely concerned about the suffering which many people go through, you may choose to help those who are unfortunate in one way or the other. You have a compassionate spirit and feel deeply for the losers in this world. Your talents suit you to employment in institutions where people are isolated from society in some way. At the same time you personally have a deep longing to seek refuge in something which transcends everyday life. Perhaps this will manifest itself in creative, musical or artistic work which enables you to merge your spirit with the greater ocean of the collective spirit.

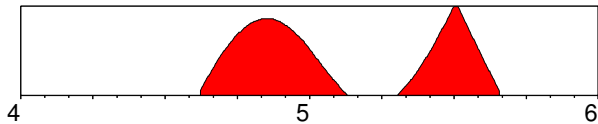
PERSONAL - EMOTIONS: Inner refuge

In your childhood you probably experienced long periods of isolation in which you were removed from everyday life in some way. Perhaps, too, you were profoundly influenced by the

dreams, longing or loneliness of your mother. At any rate, you now have a need to withdraw from the world from time to time and commune with nature or your inner feelings. Really you ought to have a room of your own which is sacred to you, and where you can be alone. You are extremely sensitive to your environment and spend a lot of time enveloped in a very private emotional world where other people have difficulty getting into contact with you. In this private sphere you have many dreams and longings. Perhaps it would be wise for you to work more consciously with the inner world of your imagination through creative work or meditative practice.

Synastry

8/16/2004 -> 8/29/2005



You can expect powerful change in this area, as you learn to integrate the following influence into your life.

PROFESSIONAL - LIFE-PATH: New life direction

Though this period is most relevant as regards finding a new direction in life, you will be relieved to be able to define new goals in life after a period of confusion. You are probably feeling somewhat tired and your self-confidence may be at an all-time low, yet the determination to spend time on your needs and to develop decisiveness and strength will lead to long-term gains. Do not expect to be clear about exactly what it is you want to do yet - it is a time to turn your back on the past and make tentative plans for the future.

PERSONAL - LIFE-PATH: New life direction

An inner discontent with your life-style inspires you to re-examine the direction your life is taking, and this in turn will lead you to analyse any important relationships in a critical manner. You do not want to waste time on superficial involvements, yet at the same time you know that you should either commit yourself or be alone. You can be hard on yourself in this period, yet you discover new strength and self-sufficiency.

Identity

and

PROFESSIONAL - IDENTITY: Stabilise your foundation

The main issues in your life centre around building up a strong sense of self-worth. In career matters you would be happiest with a stable job and a regular income. Attaining a stable sense of self and building up a set of personal values that stand the test of time is priority number one. This may well manifest in a material way, but this is mainly because you have the ability to both appreciate, enjoy and administrate the material things of this world. Because you have a fine appreciation of quality, this will naturally be reflected in the things you acquire. When you function well professionally people will see you as a person who they can rely on and count on for support. You are patient and determined, and you know how to consolidate your position after you have achieved a goal. You are extremely good at maintaining gains, once they are achieved.

PERSONAL - IDENTITY: Stabilise your foundation

Basically you seek stability and security. However some of the greatest testing times of your life come when your values change

and periods of instability arise. These periods will often be accompanied by the need to lose or give up something to which you are extremely attached. Your fate is to understand the very nature of attachment and yet develop greater flexibility in the face of gain or loss. Partnerships can be affected by your inertia as regards the need for renewal and change. When your self-worth is reflected by inner values which can never be lost, you become a tower of strength for yourself and others. Other things being equal you can build a wall of security around your loved ones. However you may have rather fixed ideas and principles, and you rarely allow yourself to be influenced. When those around you desire change, this can create a good deal of frustration.

Please enter (M)ale or (F)emale

PROFESSIONAL - IDENTITY: Group consciousness

You have fine leadership qualities because you know how to integrate yourself into a group without dominating it. As a result people will automatically respect you because they do not feel threatened by you. You function best in a team. You give the impression that the well-being of others is important to your heart and it is. You have humanitarian instincts, believing in the power of consensus and group enterprise. Obviously these talents are best used through having some kind of social power: you can represent people, act as a spokesman or be a group leader of some sort. Over and above social and political interests, you may have some untraditional talents connected with mental development.

PERSONAL - IDENTITY: Group consciousness

Some of the most important personal developments for you come through your experiences in groups and with friends. Your social life is central. You set great store on being accepted and respected in the social scene, and you are in general a loyal and warm-hearted friend. Your social connections have such a high priority that they may affect the harmony of intimate relationships. Your partner may feel that you are avoiding emotional intimacy, but it would be wise to encourage you in your social interests, because you become a more whole person through contact with others. You have a fascination and talent for working in consciousness-raising groups, and benefit greatly from contact with untraditional people from international backgrounds.

Sun Conjunction Mercury

It may be difficult for you to discern the influence of this combination of planetary energies; it is weak and may be outweighed by stronger influences.

This conjunction shows a fusion of energies in you. Both the positive and negative sides of this aspect will be an integral part of your character.

PROFESSIONAL - IDENTITY: Subjectivity

As Mercury is never more than 28 degrees from the Sun, the only aspect possible between them is the conjunction - the closer they are together, the stronger this aspect will be. There is a great mental talent and a restless desire to learn more and gain experience. You would thrive in a job which gave you the opportunity to be on the move and meet people, as communication is definitely one of your strong points. You hate to be stuck in any job, and you need constant mental stimulation. This can of course lead to a number of radical job changes. Alternatively you can satisfy your need for stimulation by going on courses or undertaking study projects. You have good teaching abilities and would prosper in any position in which you had to get a message across. Your strong points are your versatility, curiosity and a youthful enthusiasm. Your weaknesses are connected with restlessness and lack of concentration - and a

tendency to be very subjective in your evaluations. You are overconcerned with making an impression and like to have the last word. You hate being wrong, and have difficulty admitting it when you are.

PERSONAL - IDENTITY: Subjectivity

Intelligence and communication are important issues for you in your personal relationships. You identify strongly with what you say, and it can be a blow to your personal pride if you are ignored or misunderstood. As a result you tend to be forceful in your opinions and at times unreceptive to what other people say and think. You are overly subjective, and you can spend a great deal of time running an inner dialogue in which you talk to yourself. By nature you exude a youthful spirit and a certain naivety, or immaturity. People might call you flighty - even a Peter Pan figure. Unless other influences in the horoscope contradict this, you may lack staying power and skip from one relationship to another. You need the stimulation of travel and contact with interesting people to keep you occupied and burn off all your surplus energy. Your father may have been an intelligent or talkative person, with a nervous or skittish nature. You will judge the relationship you had with him through your ability to understand him and establish mental contact, and subsequently you judge yourself through your ability to establish mental contact with others.

Sun Trine Jupiter

This aspect is extremely powerful in your horoscope; every action you take will be coloured by this energy.

Please bear in mind that the contact between these planets is harmonious, which means that you will rarely be troubled by their negative influences. They represent a resource you can draw from.

PROFESSIONAL - IDENTITY: Insight

One of your greatest professional assets is your optimism and ability to envision and empower the future. You have the capacity to occupy a high profile position in which your charisma and personal identity play a leading role. As you are strongly motivated to acquire insight in your life, and rather philosophically minded, you would function well as an advisor, counsellor or simply as a leader figure, whom people turn to for advice and a sense of direction. It is essential that your profession offers you the opportunity for growth. You need wide horizons and you will probably find that you travel a lot in your work. You are cosmopolitan by nature, and enjoy the cultural aspect of your work. You have very strong convictions indeed, and may be rather morally high-minded. This side of your character can lead to ideological confrontations with influential people. You have great difficulty in admitting your mistakes, and although you have vision and prophetic sense, you can be wildly optimistic about the future, and are often to be seen chasing dreams of prosperity. Inasmuch as vision is necessary for success, you will generally reach your goals, but greater attention to planning, more realism and more patience would help you consolidate your position.

PERSONAL - IDENTITY: Insight

You are an inspiring person with a wonderful capacity for positive thinking and looking on the bright side. You are a seeker of wisdom, and this search will lead to many studies and many travels to widen your intellectual horizons. During the course of your life, you acquire a set of opinions and personal convictions which play rather a dominating role in your environment. Gaining understanding of the meaning of your own life is important, and you identify strongly with the conclusions you come to. You have a great need to find a mentor or wise person who can instruct

you, but few people will have the capacity to impress you on an intellectual or spiritual level. If you do not cultivate a sensitivity to the ideas of others you can become opinionated and arrogant. Others can find you mentally dominating or over-forceful in discussions. There is more dignity in giving your opinion only when asked, than in foisting your beliefs on others. Generally however, you will create a good impression because of the wide span of your mind, and a tolerant attitude towards others.

IDENTITY - IDENTITY: Insight

It is very likely that your father was a man of strong beliefs and convictions. These convictions may have been cultural, political or religious, and you will have had trouble as a child in standing up to the intellectual challenges your father set you. At worst he will have pontificated a lot and have been very unreceptive to argument. At best he will have been a jovial, humorous and warm figure, who really encouraged you to develop intellectually. He may have been a well-travelled man, and expanded your horizons with stories from foreign climes. You may have felt put in the shade by his larger than life character when young, but this will have inspired you to live up to some grand vision of yourself later in life.

Factors in your childhood have given you a hunger for knowledge and understanding which can be quite desperate at times. You are concerned about being able to define your identity and explore the boundaries of your being. With this aspect there can often be some anxiety about establishing the circumference of your identity, and manic phases can arise in which the boundary overflows into other people, nature, the cosmos. Often some kind of religious philosophy is important, because you discover that your ego alone is not sufficient in itself to explain the mystery of existence.

Sun Trine Uranus

This aspect is extremely powerful in your horoscope, and will be a major feature of your character.

Please remember when reading this section, that the harmonious nature of this contact means that you can use the energies creatively, for the most part without negative effects.

PROFESSIONAL - IDENTITY: Consciousness change

Your chief contribution to society is your ability to entertain original ideas and experiment with new ways of doing things. You need to work in an independent position or with a company which respects and encourages your originality. You quickly become bored if you have to perform the same functions day in day out. You need to meet people - and you thrive on unusual challenges, especially if they involve travel and dealing with radically different cultures. You may travel long distances to exotic countries, or work with advanced technology. Alternatively you will go your own unique direction in your professional life, developing unconventional talents - perhaps connected with consciousness development in one form or another. You are not one to stand on ceremony either - you hate stuffy protocol and thrive on contacts with young and old, rich and poor. It is your job to pave the way to the future with new ideas and an original life-style.

PERSONAL - IDENTITY: Consciousness change

You are a true individual and other people may regard you as rather eccentric. You like to express yourself through actions which surprise others in some way, and you enjoy embracing ideas which are provocative. You do not like to feel tied down, and function best in a relationship which gives you a lot of personal freedom. Often your friends will seem more important than your family, and as a result partners can feel that they are unable to establish an intimate contact with you, though you are

usually quite open and fair-minded. During certain periods of your life you will choose to change your direction radically. These personal revolutions are often accompanied by new interests of an untraditional nature - for example astrology, electronics and technical matters, or mental powers. You have an electric and rather unstable aura around you, and often your nerves are on edge. People feel uncertain around you as they feel that anything can happen, so you would be wise to put them at ease about your intentions.

IDENTITY - IDENTITY: Consciousness change

Your father was probably unusual in some way, and he will have brought a sense of unpredictability into your life - perhaps because he travelled a lot, perhaps because he was an outsider in some way, or simply because he acted irrationally so that you never quite knew what he would do next. You may have had a friendly - not fatherly - relationship to him, or you may have felt totally alienated. Whatever, there was an aura of tension or excitement in your relationship.

Later in life this evokes a need for you to develop unconventional habits and be different in some way. Moreover, you can adopt a rather distant attitude to your feelings. At its most extreme, there can be a lack of grounding with very little sense of contact with the physical body, and far too much mental activity. Success in your life depends on you coming down to earth with your visions. Factors in your upbringing can lead you to feel that you are an outsider. Actually you would prefer not to run with the crowd, so why worry about being different? This feeling can be utilised positively by helping people who feel they are outsiders.

Sun Opposition Neptune

This aspect is extremely powerful in your horoscope; it will dominate many areas of your life.

You will have to work hard to attain the beneficial results of this aspect. Partnership matters are central for your gaining an understanding of the principles involved and integrating them in your nature.

PROFESSIONAL - IDENTITY: Find meaning in spirituality

On a professional level almost anything is possible for you - as long as you feel that what you do is meaningful. Whatever field you choose, your success will not satisfy you unless you work creatively or have altruistic goals. True satisfaction comes when you transcend material goals and personal ambition. You have high, and perhaps unattainable expectations of yourself...and often of others. You have an intuitive insight into others, and a natural creative talent, but you seem to have an unconscious drive to set up situations which guarantee disappointment or failure. You function best when there is an overall ideal that goes beyond your personal needs. There is a talent for working with visions and dreams, and areas of social concern.

PERSONAL - IDENTITY: Find meaning in spirituality

You are a sensitive and impressionable person with a strong need to be able to define who you are. You often feel that your grasp on reality is not tangible. If life becomes boring or monotonous, this can strike at the very core of your identity. Women with this aspect put their men on a pedestal from which they rapidly fall. In your longing to find an ideal that does not dissolve like a mirage in front of you, you will constantly refine your nature. Your longing and dissatisfaction is the engine of spiritual change in your life. You find yourself by going within yourself. Meaning in life comes when you seek to attain idealistic goals and develop a collective vision which benefits others. You would definitely benefit from meditative practice.

IDENTITY - IDENTITY: Find meaning in spirituality

Your early connection with your father was special in some way. You may feel you had an intimate contact with him on a spiritual level, although later events will prove that you deluded yourself in this respect. But your father will have touched you in some ineffable way. He may have created a special atmosphere of dissatisfaction around him which evoked concern in you. In extreme cases there can be illness, alcoholism or some form of escapism. It is rare for the father to attain his dreams. Actually you tend to misread people because of your longing for an ideal. Your father will embody this ideal and most probably fail to live up to it, and later you will put others in this role. When you stop having expectations of this kind, you will be able to avoid disappointment. Your dissatisfaction is a friend that guides you towards purifying and refining your life.

Sun Trine Pluto

Though not especially strong, you will be able to feel the influence of this aspect under many circumstances.

Please bear in mind that the contact between these planets is harmonious, which means that you will rarely be troubled by their negative influences. They represent a resource you can draw from.

PROFESSIONAL - IDENTITY: Transformation of identity

It is important for you to make a strong impression on people, and you invest a lot of energy in this - more than you are aware of. Much can be gained by toning down your personal energy. You are suited to positions requiring the use of power and psychological insight. Whatever you do, you like to be deeply - sometimes fanatically - involved. This may often lead to battles of will, and you tend to win, basically because you cannot contemplate personal defeat. More flexibility would actually benefit you and help you avoid tiring power games. Personal power is a natural asset - as you will discover after a number of significant personal crises which lead to a reevaluation of your role. These crises are centred around achievement at all costs, or fanatical attachment to a particular role which outlives its meaning for you. When you learn to tone down your sensitivity about self-esteem, and invest your considerable willpower into projects which really mean something to you, and to others, you can achieve success. You may have a talent for psychology or dealing with the powers of the unconscious.

PERSONAL - IDENTITY: Transformation of identity

Early personal experiences have made you sensitive about your identity, and anxious about self-esteem. However this means, paradoxically, that you often overwhelm others with your presence. Thus you tend to be a dominating figure in intimate relationships. You need a partner who is not superficial and who shares your intense approach to life. To achieve harmony here you should relax instead of asserting yourself, otherwise relationships will become very exhausting. It is important to realise that power battles are related to inner fears about your identity. Women with this influence will often be attracted to a dominating man, only to find that he does not match her own strength which was acquiring through trying times in childhood. More intimacy can be achieved by daring to show vulnerability.

IDENTITY - IDENTITY: Transformation of identity

It has not been possible for you to cement any truly deep bond to your father. Perhaps he disappeared when you were young, and a stepfather took his place, perhaps he was at home but unreachable or distant in some way. Because intimacy was impossible to attain, you feel a inner chasm of emptiness connected with your identity.

You have felt that you were not recognised as an individual - hence your deep need to manifest yourself strongly later in life. Although some of the fault almost certainly lies with your father, you have a tendency to compound the problem by withdrawing yourself totally when you feel ignored or unappreciated. This was your way of protecting yourself psychologically as a child, but in the long run these tactics lead to a profound alienation. The enormous efforts you make to gain self-acceptance ultimately lead to great personal power and psychological insight. Psychic or intuitive powers can enrich your life and give strength to others.

Sun Sextile N. Node Planets Window Sun Trine S. Node

This aspect is extremely powerful in your horoscope, and will be a major feature of your character.

The sextile aspect is favourable, and stimulates your capacity to learn from experience. You can expect the negative effects to be minimal.

PROFESSIONAL - DESTINY: The illusion of being

There may be a number of advantages for you in assuming a high profile in connection with specific groups of people. You may be elected as a figurehead, and your personal character can filter down to those you are connected to and have a profound affect on their lives. How to deal with the ensuing recognition or fame may, however, be something of a dilemma for you. Victories can ring hollow, and honour may bring disillusion, although you have a role to play in other people's eyes.

PERSONAL - DESTINY: The illusion of being

Contacts with other people will play an important role in your search to get into touch with your inner identity. Father figures - through their presence or through their disappearance - will force you to ask a lot of questions about the nature of your existence, and this will in time lead to new spiritual growth and vision. Influential people and - later in life - spiritual authorities, may be eclipsed through sudden inner realisations. Times of inner darkness alternate with the blinding light of Truth.

Sun Semisquare MC

This aspect is extremely powerful in your horoscope; it will dominate many areas of your life.

You can expect this influence to be hidden and sporadic in its effect - which is negative, especially as concerned social issues, and issues of self-worth.

PROFESSIONAL - GOALS: Ego consciousness

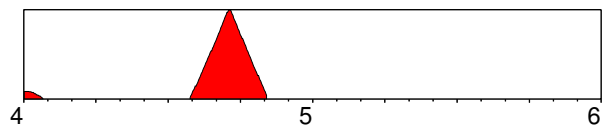
You are destined to attain a degree of prominence in your career, and can either make it creating your own business, or attain recognition in some kind of leadership role. You invest your identity into your career for better or worse, and your feelings of self-esteem and personal honour are intimately connected with the impression you make in the professional world. Take care not to flaunt the power you attain.

PERSONAL - GOALS: Ego consciousness

Your relationship to your father will have played an important role in your upbringing - especially as regards defining your need to express yourself through worldly achievement. Though you can attain your will in the world, and may be destined to great things, your achievements can only be measured according to how refined your personal character is. This means overcoming a tendency to indulge your ego.

Synastry

1/1/2004 -> 11/3/2004



This is a very beneficial influence, though you may not be consciously aware of the process. Creativity and travel are favoured as you expand your capacities and sphere of influence.

PROFESSIONAL - IDENTITY: Creating your future

During this phase of rising self-confidence you can expect your plans for expansion to take off. You should be thinking positively about the future now, visualising how you would like things to be as vividly as possible. Your power to get what you want is at its highest, so start expounding your visions of a bright future. Remember: you get what you focus on, so focus on what you want.

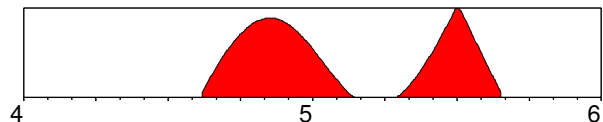
It is favourable to expand into foreign countries; higher education, public relations and insight-enhancing projects will also bring success. Whatever you do, it is essential that it has depth and meaning for you. Don't waste important time on trivial matters - success is about the quality of life and making an impact with the essence of your own identity. If necessary take time off from work to build up a new vision for your future. If you have any legal problems, you will be confronted with them now so ensure that you are morally unassailable. And don't over-estimate yourself and your capacities. Make sure your plans are within the boundaries of reality.

PERSONAL - IDENTITY: Creating your future

During this phase of your life you will be given the opportunity to find a new sense of meaning in your existence. Bubbling up from within, you have the chance to release a new energy and enthusiasm based on a sense of your personal relevance to this planet. Travel abroad and contact with people you respect for their intellectual and spiritual capacities will now expand your world-view. Knowledge and understanding will enable you to build up a broader moral base with greater insight and tolerance. This is a very favourable time for religious growth if you are so inclined, or philosophical and intellectual insight. In many ways the world opens to you and reveals its gifts and blessings for you to enjoy. Take care as you sample the pleasures of this cornucopia and don't overestimate yourself - personal hubris will be punished and you may find yourself coming down to Earth with a bump.

Synastry

8/14/2004 -> 8/27/2005



This influence is mildly beneficial, though you will not feel it very powerfully. A combination of effort and luck should enable you to make the most of the following influence.

PROFESSIONAL - IDENTITY: Long-term strategy

You can use this period to rise to the many professional challenges in your life and create the foundations for lasting growth. This is no easy time; many difficulties arise and you will have to work harder and shoulder more responsibilities. Authority figures make demands on you, seemingly without giving you any

recognition. If you try to avoid commitment now, you are likely to be dogged by worries and problems. Your self-confidence may be low, and you may feel that you cannot live up to the expectations of others. Time will show that you can overcome difficulties and achieve goals.

Planning and strategy is of the essence, and it pays to plan months ahead and to tighten up schedules, working to realistic deadlines in a committed manner. By completing your work in stages and dividing large projects into smaller sections, you will find that you can handle enormous responsibility. You will not get something for nothing now, but hard work will be rewarded in the long term, so roll your sleeves up and get down to it.

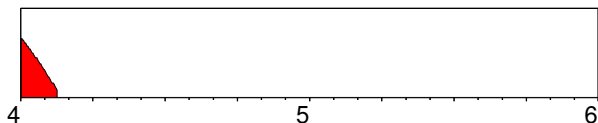
PERSONAL - IDENTITY: Long-term strategy

At the beginning of this phase you will probably not be feeling so good about yourself. You may feel that you do not get enough - or don't deserve - recognition. There is a strong inner feeling that you must pull yourself together and do something worthwhile, and the sooner you do this, the better you will feel. There is a general feeling of being weighed down by burdens, and there may be a lot of pressure to live up to the expectations of others.

It is time to take responsibility for your own life and to define new goals, whilst you can send a strong signal to other people - parents in particular - that you can look after yourself. By rising to the challenges of the time, you can develop a strong inner feeling of self-satisfaction, based on the results that come from hard work and effort. You will be facing central issues concerned with identity and self-sufficiency, and will emerge from this period as a stronger and more self-reliant person.

Synastry

1/1/2004 -> 2/15/2004



Major irritation factors arise as a result of this influence, yet if you use this period to initiate dynamic change you will be able to make dramatic progress in your life.

PROFESSIONAL - IDENTITY: Radical change

This is a dramatic time of change which favours those who are willing to take a risk concerning the future, but upsets those who would prefer things to continue as they are. Now is the time to make some revolution in your life by grasping modern trends and setting out on untrodden paths. If economic safety and job security are your main priorities, you could be in trouble.

Unpredictable things can happen now because change is on the agenda. If you take an objective view of what you are doing now, you will almost certainly see that if some kind of renewal doesn't take place, you will die of boredom. Do not avoid necessary change now - you should be prepared to make daring and radically new decisions - let yourself be swept along by the excitement of the times.

Opportunities now are connected with greater freedom and independence. You can drop work which restricts your movements and consider more flexible working hours. This is a favourable period for free-lance work, or temp work which gives you more time to do the things which really interest you. Working with new technology, computers, fax and modern communication is particularly favoured. If you have New Age interests, this is the time to really go for them. You may find yourself travelling more internationally, or getting involved with foreigners. Humanitarian issues can be important.

PERSONAL - IDENTITY: Radical change

This is an exciting and breathless period which brings dramatic new awareness and consciousness change. Above all it is a time to set yourself free and enjoy a world without boundaries and restrictions. Perhaps your loved ones will have difficulty appreciating how strong your need for change is, but this is not the time to compromise. This is your time, and you must avail yourself of the opportunity to change your attitude to your life. You can meet some very exciting people at this time who come from exotic countries, or who have unconventional and inspiring interests. Involvement in groups is particularly favoured, especially as regards consciousness-raising activities. It is as if you are electrically charged and full of new energy, so grasp the opportunities that arise. You can accomplish far more than normal in this short period. It is also possible that you feel bored or tied down now, and this is because of the awakening need for change. Change can come suddenly and unpredictably, and when it arises, you should not miss your chance. This is an excellent period for sudden insight into your identity, and for renewed spiritual awareness.

Emotions

and

Please read page 4: "and"

Please enter (M)ale or (F)emale

Please read page 4: "Please enter (M)ale or (F)emale"

Moon Square Jupiter

It may be difficult for you to discern the influence of this combination of planetary energies; it is weak and may be outweighed by stronger influences.

In your chart there is disharmony between these two planetary influences, and this will be reflected by many struggles both within your mind, and out in the world.

PROFESSIONAL - EMOTIONS: Horizons

You would thrive in a profession which offered you the opportunity to travel and explore different cultures. You could easily work or settle in a foreign country. Being restless in spirit, you get rather bored in a job which does not have an element of exploration - culturally, intellectually or geographically. You are essentially a very curious person, and the pursuit of knowledge is food for your soul. You can also be very caring, and your generous disposition can give you a talent for working with the public, especially as regards public opinion, marketing, or broadcasting values of some sort or another. Children would be especially benefited by your attention, and you have both the humour and educational drive to be a good teacher. You are not the kind of person to stay in any one job for a great length of time, unless it offers opportunities for growth and expansion.

PERSONAL - EMOTIONS: Horizons

Foreign environments may have played an important role in your upbringing, and generally speaking you will enjoy the cultural stimulation of travel and new horizons. You have very strong empathy, and your emotional life exerts a powerful influence on your environment. You feel things very strongly, especially as regards what is right and what is wrong. You react powerfully to perceived injustice, and instinctively flare up or get upset when you think something is unfair. Above all, you dislike restrictions on your personal freedom, and you can manifest a strong independence if you feel encroached upon. You may often overreact to quite normal expectations on the part of the partner,

as regards commitment and responsibility. Generally however, your optimistic and light-hearted nature brings a lot of joy and happiness to personal relationships, just as long as you are allowed to feel free, travel and pursue your intellectual interests.

EMOTIONS - EMOTIONS: Horizons

Your mother had a strong influence on your personal convictions about life for better or worse. Perhaps she was religious or moralising, with extremely dominating opinions about what was best for you and the world. On the other hand she may have had an extremely beneficial effect on you - widening your horizons, stimulating you intellectually, and providing you with a strong moral foundation. Your mother was probably not the type to let herself be restricted by relationships, and she will have inspired in you the desire to expand your horizons and see the world. Because of these childhood influences, freedom to pursue your dreams and visions is important for you. You have strong convictions about your personal rights, but these may not be realistic when you decide to commit yourself to a relationship. You often get into emotional arguments on matters of principle when you feel you are being treated unjustly, but perhaps you need to overcome a certain emotional irresponsibility. It is essential for you to re-examine and adjust your moral convictions.

Moon Sextile Saturn

This aspect is extremely powerful in your horoscope; every action you take will be coloured by this energy.

When reading the following text, please bear in mind that you will for the most part experience only the positive effects of this aspect. You are particularly stimulated to learn and communicate, as regards the matters concerned.

PROFESSIONAL - EMOTIONS: Self-sufficiency

You are a very responsible and dutiful person who is very motivated to live up to your commitments to society. You can work well in a role which requires hard work and a lot of responsibility, especially if this entails formal relations with the public in some way. You can function effectively as a buffer between the public and the authorities. You may have a special talent for working with old people, or with people who have emotional problems or very difficult life circumstances. You have a measured response to the people you meet and can evoke considerable respect from others, just as long as you do not allow yourself to be crippled by shyness. You can perform monotonous tasks patiently, and are good at systematising things and creating order. Professionally you are strongly motivated by job security and continuity at work. You are not very flexible, and tend to stick to long-term habits and work-patterns. On the other hand you are reliable and conscientious.

PERSONAL - EMOTIONS: Self-sufficiency

You are extremely sensitive emotionally, but present a very solid facade to the outer world, giving the impression that you are quite cool, even invulnerable. Behind your formal manners is a person who was never fully allowed to enjoy a carefree childhood. At an early age you took responsibility in the family, repressing your own spontaneity and lowering your expectations because of emotional hurt. In later relationships you have difficulty letting down your protective barriers, even though you have a deep desire for intimacy. If you do get hurt emotionally you rarely let on, and you close the shutters on your feelings so that your loved one has no chance to make amends. After the age of 30 you learn more successful strategies for intimacy. First of all it is essential for you to be emotionally self-sufficient - if you sell yourself for security, you will end up in a prison. From a position of inner strength you can then allow yourself to be more trusting and

vulnerable - you have nothing to lose and everything to gain by opening up emotionally without making any demands.

EMOTIONS - EMOTIONS: Self-sufficiency

Your childhood was probably rather difficult. You may well have felt rejected by your mother, perhaps because she worked too hard and had no time for you, perhaps because she had problems of her own, perhaps because she was blocked emotionally. Whatever the cause you have reacted to rejection by withdrawing behind a protective barrier so that you can't be hurt. Moreover you may also have a tendency to try to win love and acceptance by doing duties taking on family responsibilities. Emotional responsibilities founded on guilt are not wise, particularly if they carry on into middle age.

The situation is perhaps more complex than you imagine. You were born with a strong emotional hunger and need for security, and it is possible that your mother could not fulfil your demands. You may have interpreted her reactions as rejection, and in turn rejected her when she wanted to be warm. Whether this is true or not, you are very difficult to approach now when you are hurt, and you have the emotional resilience and determination to withdraw emotionally for quite long periods of time. However, as time goes by experience will teach you the importance of cultivating an open emotional attitude - it is much less painful in the long run. Ultimately you can be of great assistance to other people who have emotional problems, and you can be quite unselfish in giving time and assistance.

Moon Square Uranus

This aspect is of medium strength and its influence will often be felt, though not acutely.

There will be great difficulty in integrating these two planetary influences, and the promised harmonious results will only arise after you have expended time and effort.

PROFESSIONAL - EMOTIONS: Unpredictability

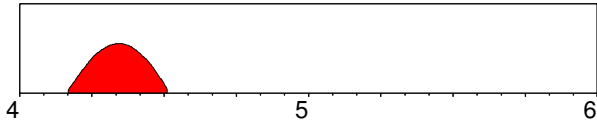
You are something of a gypsy, and this means you can adjust to extremely unusual professional environments. You would thrive in a job in a foreign country for example - the more exotic the better. You are well-suited to working with people who are alienated from society in some way, especially if they come from a different culture. On the other hand you function very badly in a conventional place of work, where the same functions have to be performed day in, day out. You have a very low threshold for boredom, so you are suited to a job which brings exciting changes and variation during the course of the day - preferably meeting people. You have an advanced intuition and very sensitive antenna - this may give you some talents in the New Age sphere.

PERSONAL - EMOTIONS: Unpredictability

You do not have conventional desires as far as domestic harmony is concerned. In your childhood there were many unsettling influences and a general atmosphere of unpredictability, excitement or stress. You need to feel that something is happening around you. This means that you can get very restless in relationships, and if you feel bored - and you often do - then you start getting provocative. You are best suited to relationships which keep you occupied with new daily challenges - and you have a strong need to express your emotional energy in group scenarios. Your partner will not be able to satisfy your need for stimulation on his or her own. You thrive in unusual domestic relationships - for example communal living, flat-sharing or residence abroad. For partnership to function satisfactorily it is essential that you stop distancing yourself emotionally - this gives the impression that you do not care for your loved one.

EMOTIONS - EMOTIONS: Unpredictability

Extraordinary circumstances regarding your relationship to your family - particularly your mother - and your general upbringing, have evoked a very detached emotional attitude in you. In all probability your relationship to your mother was characterised by a sense of equality or of friendship, rather than traditional patterns of dependence. From one point of view you were never allowed to feel a natural dependence and you protected yourself by developing detachment, but from another point of view you rejected your mother whenever she tried to assume the traditional maternal role. There may also have been an element of unpredictability about your mother's behaviour - a situation in which you never quite knew what she was going to do next. Later in life you display this inherited tendency to detach yourself when encountering emotional challenges. You send the unconscious message that you are quite prepared to leave if there is going to be too much trouble, and that you can handle your own freedom. Of course you can, but this means that you end up in half-relationships in which you are neither living with, nor quite living without the partner. When you discover that your love of freedom and independence is partly a device to protect you from getting hurt emotionally, you learn to express feelings of commitment with greater warmth, and this in turn creates more security for the partner, who will reciprocate by showing greater commitment.

Synastry**3/2/2004 -> 7/5/2004**

This influence is mildly beneficial, though you will not feel it very powerfully. A combination of effort and luck should enable you to make the most of the following influence.

PROFESSIONAL - EMOTIONS: Expanding your base

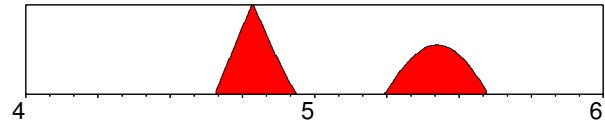
This influence depends very much on how large a role safety and security play in your professional life. If safety is paramount, you will be wanting to expand the foundations of whatever represents security for you now. As this may well be property, you could wish to move into a larger home or business, and indeed it certainly pays to invest in land and buildings now. Providing that you can trust your instincts in these matters, then property acquisition or expansion is favoured.

For some people freedom and expansion of horizons will be more important than security. The urge to investigate foreign countries - their people and culture - can play an important role in your career now. Trust in your hunches - your intuitive powers are at their highest in this period, and you have the enthusiasm to take on any challenge. You may however find that your interests lie outside the professional sphere. This is a higher-charged period for you emotionally, so you will probably also want to expend your energies on domestic or family matters.

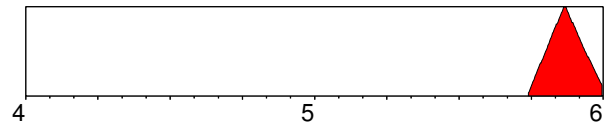
PERSONAL - EMOTIONS: Expanding your base

This is a period when your feelings and emotions exert a tremendous power in your life. Hopes and dreams about the future will be a driving force inspiring you to take action. Generally speaking you should have a degree of luck and good fortune in attaining your greatest dreams at this time. This is probably a natural consequence of the enthusiasm you invest in all matters. You can expect an expansion of your horizons and a deepening of your capacity to show feeling. You learn something of the mystery of life, and it gives a new meaning to your existence.

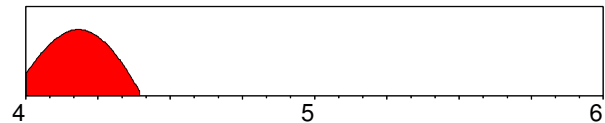
You can be strongly inspired by a future vision connected with domestic happiness, a home or children. There is, however, a tendency to go overboard. If you are hoping for the fulfilment of emotional dreams, so many opportunities can arise that you simply cannot make a choice. Furthermore your emotional suggestibility is at its highest - you believe what you want to believe. Whatever the concrete results - if any - of this period, you will come into deep contact with your emotional power and gain rewarding new insights.

Synastry**8/29/2004 -> 8/6/2005**

Please read page 11: "Country not found. Do you want to add new?"

Synastry**9/29/2005 -> 12/31/2005**

Please read page 11: "Country not found. Do you want to add new?"

Synastry**1/1/2004 -> 5/23/2004**

You can expect powerful change in this area, as you learn to integrate the following influence into your life.

PROFESSIONAL - VALUES: Emotional self-sufficiency

Issues of economic and job security become very pressing at this time, and you will feel a strong drive to overcome any weaknesses in this area. You can however expect a lot of difficulties, especially if you indulge immature expectations, or rely too much on others. Childish behaviour gets you nowhere now, and if you do not have conscious control over your emotional reactions you can expect to be unpopular.

The atmosphere in your working environment may be rather heavy now - perhaps because of an elder woman who is trying to assert her authority. The more mature you are, the better you can handle trying situations. You have to know when to set limits, whilst still living up to your responsibilities. You can develop the self-discipline and patience to work with people in difficulty, if you choose to.

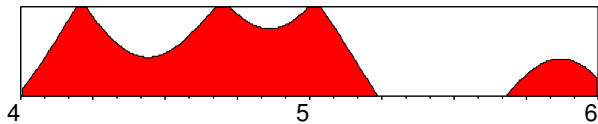
PERSONAL - EMOTIONS: Emotional self-sufficiency

During this challenging emotional period you will become more mature and self-sufficient. But this is not normally a happy time - partly because safety and security is no longer what it was. You have to spend time building more secure foundations for your life, and you cannot expect anyone else to be very supportive during this time. It is up to you to shoulder responsibilities uncomplainingly and with dignity.

Time can drag on now because you have to spend more time attending to everyday details and getting things to function on a practical level. On an inner level you are confronted with the need to change or control unconscious emotions and habits. It is no use allowing your temperament, your jealousy, your distance or your stubbornness to get in the way of a rewarding relationship. The time demands emotional self-improvement, so stop making excuses and start working on yourself.

Synastry

1/3/2004 -> 12/31/2005



This is a very beneficial influence, though you may not be consciously aware of the process. Creativity and travel are favoured as you expand your capacities and sphere of influence.

PROFESSIONAL - EMOTIONS: Change of environment

This is an exciting and perhaps disturbing period because of radical and unexpected changes in your environment. You cannot expect to feel very secure now - the period requires flexibility as regards working habits and place of work. There may be more travel than usual, and there is a chance of greater international commitment, perhaps involving contact with people from exotic cultures. A growing awareness of social issues may inspire you to work with people who are displaced in society in some way, either as social outsiders or refugees.

As this is a time of considerable emotional awakening and awareness, you can acquire a greater knowledge and consciousness of unconscious processes. If you can integrate this awareness into your work, you may find yourself applying newly-discovered talents for dealing with people - particularly as far as consciousness-raising activities are concerned. There is a strong likelihood of career involvement with groups and with collective ventures now.

PERSONAL - EMOTIONS: Change of environment

This is a time of emotional restlessness and unpredictable change, which will strongly affect the environment you live in. Events can arise which shake you up emotionally and force you to gain greater insight into the unconscious mind and habitual emotional reactions. Greater awareness and objectivity is required when dealing with your feelings now. In reality there is a growing need for change, and this is going to affect family life. There is a strong urge to live a gipsy-like existence - and indeed you may find yourself moving around or in temporary accommodation for a while.

If you are thinking of moving, this is the time when it will happen. It is fine to be somewhat impulsive now, just as long as you get free of environments which no longer mean much to you. It is however not an especially good time for settling down. It is better to be on the move, to travel and to discover new places, countries and people, without allowing yourself to be tied down for too long. You may strike up an important attachment to an untraditional group now, and you will be attracted to people who live on the fringe of society.

Mentality

and Retrograde

Because of the relative position of this planet in relationship to the Sun and Earth, it appears to be moving backwards. This may make you more thoughtful or introverted in the area concerned.

PROFESSIONAL - MENTALITY: Explore the mind

You are a true all-rounder, with amazing communicative abilities. You probably have a finger in several pies, and a good deal of knowledge in a variety of areas. You probably talk in a rapid way and change the subject often. Your diversity will give you success in mental pursuits, establishing contact with others, teaching, working with the mind etc. You are an ideas-person, and as such it is essential for you to have contact with people who can put your ideas into practice. You can work wonders on the telephone and feel generally at home with modern communication techniques. It is your job to teach, persuade and inform, and it is up to others to consolidate the results.

PERSONAL - MENTALITY: Explore the mind

You are young in heart and mind and manifest a constant curiosity regarding people and the changes that go on around you. You hop from subject to subject when talking, and your voice tone is probably musical and light, and quite fast. You are restless and like to get involved in several things at the same time. Being as flexible as you are, truth can be seen as relative to the task at hand. In other words you do not like to commit yourself to a particular idea or truth for any length of time, but instead you find pleasure in exploring the whole spectrum of human interests and beliefs. It is more the dance of the mind that appeals to you - practical conclusions and applications may just be boring. Travel, meeting people and exchanging gossip about life are appealing pursuits for you.

Please enter (M)ale or (F)emale

PROFESSIONAL - MENTALITY: Social contact

You are a very stimulating person to be with, and your talent for inspiring other people may be an important factor in your work. You have a lot of ideas about how groups and society in general should function, and this can give you success in the field of social services, education, or any employment in which you can get your ideas across to larger groups. You can learn communication techniques for enhancing group consciousness. In other respects it is not what you know but who you know that helps you get on in the world - the social network you are capable of building up stands you in good stead for making professional connections.

PERSONAL - MENTALITY: Social contact

Your friendships are extremely important to you and some of your most mentally formative experiences have come from inspiring talks with people who you respect for their intelligence. Belonging to a set of friends or special social group with untraditional interests is the best way for you to express your ideas. You need a wide audience for your ideas, and you can function well in groups who need to hear what you have to say. You also derive great benefit from going on courses which are experiential and group-oriented. Mental contact with others is as important to you as the air you breathe, and in intimate relationships you will still insist on being able to go out and about with your friends.

Mercury Conjunction Sun

Please read page 6: "Sun Conjunction Mercury"

Mercury Sextile Venus

It may be difficult for you to discern the influence of this combination of planetary energies; it is weak and may be outweighed by stronger influences.

When reading the following description, please bear in mind that you are a fast learner and overcome any difficulties involved very quickly. You can expect to use this aspect constructively and harmoniously.

PROFESSIONAL - MENTALITY: Affability

You are a very versatile person, combining good judgement with taste and the ability to convey information in a pleasant manner. Success comes when you work with communication in one form or another. You may excel in the arts or in public speaking. You bring a human element into your professional dealings, and advancement will often come through the goodwill of others. Your mild manner and diplomatic nature leaves a good impression on others. You would function well in a position with lots of contact with people, for example dealing with personnel. You are very concerned about justice and make a strong effort to see both sides of any issues. You can secure agreement because you are willing to listen to others, and you are careful not to alienate people with impulsive remarks. Obviously with these talents you will prefer a harmonious professional environment to one in which there was too much trouble or competition.

PERSONAL - MENTALITY: Affability

You have a gentle and sensitive nature, and strive to maintain harmony in your personal relationships, going a long way to meet the needs or demands of another, before you allow yourself to feel provoked. In love relationships communication is the single most important factor. This may stem from a very close relationship to a brother or sister when you were a child. Even now, you probably cultivate a brotherly or sisterly manner in your relationships, where games and the element of play have an important role. As mental stimulation is so important for you, you can get bored with your partner, and for some people this may mean a tendency to become romantically involved on the side, though there is rarely any malice involved, should this be the case. Erotic desire is hardly a motivating factor for you, but you do have a tendency to flirt, and this can make your life more complicated than you would wish.

Mercury Opposition Mars

This aspect is extremely powerful in your horoscope; every action you take will be coloured by this energy.

As these two planets are on opposite sides of your horoscope they indicate that you are split between two quite different drives. As a result you tend to imagine other people with the negative qualities described.

PROFESSIONAL - MENTALITY: Sharpness

You have an extremely acute mind, and can generally come to a decision far faster than the average person. You are quick to take action and enjoy the pleasure of outsmarting your competitors.

You enjoy the thrill of mental combat. However you often cut corners, and your methods can be questionable. Your brusque manner can evoke considerable hostility in your place of work, so if you find yourself constantly getting into arguments or finding people irritating, you can be quite sure it has something to do with your behaviour. Perhaps you have a tendency to barge in or interrupt conversations, perhaps you speak in too harsh a manner or do not listen enough to others. It pays to plan more patiently,

and think twice before you make your opinion known. You would function well in jobs which require tough negotiations or an aggressive verbal style. You have plenty of energy too, and like to travel and meet people. You are a go-getter.

PERSONAL - MENTALITY: Sharpness

You get into too many arguments, and rarely consider the idea that you may be wrong. This truculent manner probably stems from conflicts in childhood with brothers, or perhaps your father. You worked out then that the best means of defence was offence. Yet troubles arise later in life because your frank and direct manner makes people feel that you are offensive. You don't always have to tell people what is on your mind. You hate to be bossed around or told what to do, so make an effort not to act in this way with others. Give them time to express themselves without interrupting, and resolve to stop criticism and arguments. Women with this aspect are often attracted to rather sharp men who may have questionable morals, or be rather argumentative types, although this is a projection mechanism based on inner conflicts. Men tend to retain adolescent qualities and act at times as if they know everything.

For both sexes it is important to slow down, otherwise the nervous system can be adversely affected. When you channel your enormous energy into creative, fun projects, you can achieve a great deal.

Mercury Sextile MC

This aspect is extremely powerful in your horoscope, and will be a major feature of your character.

The sextile aspect is favourable, and stimulates your capacity to learn from experience. You can expect the negative effects to be minimal.

PROFESSIONAL - GOALS: The ideas person

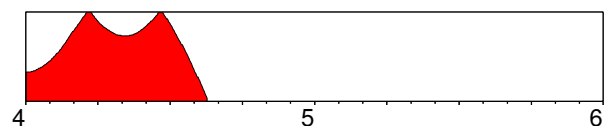
It is important for you to integrate your mental faculties in your career. Teaching, dealing with communication, writing, meeting people and generally creating contacts are all part of the employment spectrum for you. An inner restlessness will ensure that you either seek a career with a variety of interesting functions, or change jobs at regular intervals. The important thing for you is to get your ideas across in society.

PERSONAL - GOALS: The ideas person

You like to have your finger in a number of pies, and although this can be manifested as versatility, you have a tendency to be easily distracted from your personal goals. Changes of views and a restless nature may mean that you move often. A stimulating atmosphere - both at home and in your work - is a prerequisite for personal satisfaction. Children, chatting and play can keep you happy all day.

Synastry

1/1/2004 -> 8/17/2004



Major irritation factors arise as a result of this influence, yet if you use this period to initiate dynamic change you will be able to make dramatic progress in your life.

PROFESSIONAL - MENTALITY: Expanding contact

The effect of this influence depends very much on how you employ your mental talents in your profession. This is the time you should invest in your mental abilities. Knowledge is power, so

it could pay for you to go on courses, meet people and expand your sphere of influence. You can expect an increase in the time you spend travelling now, so try to streamline this area of your life. You should be doing more to enlarge your network of contacts, so make sure you are available through telephone, fax or computer. You will talk more, travel more and write more. If you have any dreams as regards writing or getting some message across to the public, now is the time to go for it, as there is a strong disposition for success in these matters. This is generally a great time for wheeling and dealing, doing business and capitalising on contacts at home and abroad. Nevertheless you can talk too much and be too intellectually pushy. Take time to listen to the opinions and advice of others - you can make misjudgements if you don't.

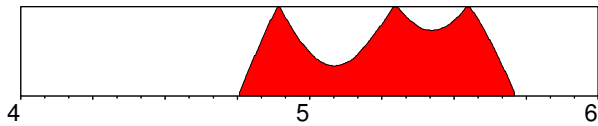
PERSONAL - MENTALITY: Expanding contact

This is a period of expanding intellectual curiosity which can be reflected in many areas of your life. You will probably devour books and TV programmes at this time to satisfy your urge to acquire knowledge. It will also be an important process for you now to weave all the threads of information that you gather into a whole piece of cloth, so that you can see a meaningful pattern in all the details that surround you.

This is a time to be on the move and to allow your mind to be fertilised by contact with a wide variety of people with different views on life. You should be bubbling with ideas, so you have to get them down on paper or out to a broader public. Although this is generally an optimistic period, there is a risk of losing your sense of proportion, particularly if you are inclined to worry or fantasy. Knowing the power of the mind to create the future, you would be well-advised to guide your thoughts into constructive channels.

Synastry

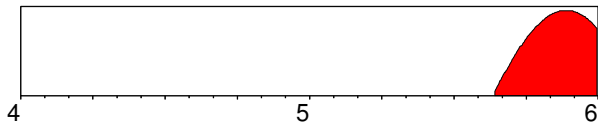
10/4/2004 -> 9/17/2005



Please read page 14: "Country not found. Do you want to add new?"

Synastry

8/24/2005 -> 12/31/2005



This is a mildly constructive period for you in the following area. You can expect to reap benefits, especially if you capitalise on your intellectual talents and social influence.

PROFESSIONAL - MENTALITY: Mental self-discipline

You are challenged now to get organised and to administrate your time sensibly. There is a particularly emphasis on improving and consolidating your talents. Long-term plans for training courses or intellectual improvement can be put into effect. Writing or communication blockages must be overcome. You can develop the necessary mental discipline now to attain your goals. Expect communication problems, and expect plans or travel arrangements to be delayed. There needs to be far more attention to detail. Attend to the small print when signing contracts.

Learning to economise with your words and messages is an essential lesson for this period. How can you express yourself most effectively in the shortest possible time? If you develop the self-discipline to organise your daily life so that you can attend to mental challenges, you can expect very satisfactory long-term results. There is a strong emphasis on business matters at this time - but many minor irritations. Take one problem at a time, be patient, and solve challenges with long-term strategies.

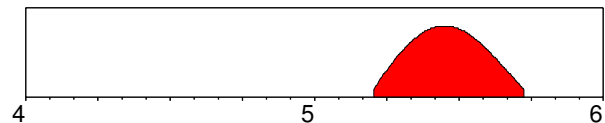
PERSONAL - MENTALITY: Mental self-discipline

This is a period in which you have more than the average amount of worries. There are many practical issues to be solved, and there is no other alternative than to get down to each issue and concentrate on one thing at a time. It is important to organise your time more efficiently. Problems particularly arise in the area of communication. This is the time to address these issues and find practical solutions.

If you feel unsure of your intellectual abilities or that you lack the necessary training to do what you want, then you should make a commitment to improve now. You need to spend more time talking and listening to your partner - there are issues which need to be solved. Problems can also arise in connection with sibling relationships or neighbours, and if you are patient and diligent you can find long-term solutions. Discipline your daily life and realise creative dreams.

Synastry

3/17/2005 -> 9/23/2005



This is a time of tension and dramatic change which may be most apparent in your domestic life, or in your career. Use the time to make much-needed changes.

PROFESSIONAL - MENTALITY: New communication boundaries

This is a period of great mental inspiration and excitement. To attain professional success now it is essential to think in new channels, and not allow yourself to be limited by conventional ideas or "the voice of experience". It is the new and untraditional that brings success, so experiment, invent and surprise people. If you are involved in a long and boring period of education or training, then you are in trouble. Mental restlessness at this time will incline you to abandon traditional teaching and seek new ideas which will stimulate your imagination. You will learn best in experiential groups or by yourself.

This is an excellent time for improving New Age interests - particularly astrology. It is a time to travel and meet different kinds of people, and a good period to learn or use another language. You should modernise communication systems now, improve computer capacity and generally hook into networks which unite people. As far as contacts and agreements are concerned, this period is rather unpredictable. Being tied down or committed to time schedules does not suit your needs at this time.

PERSONAL - MENTALITY: New communication boundaries

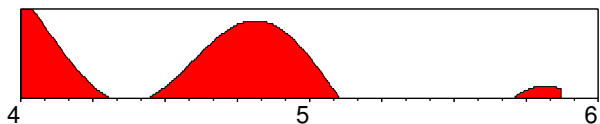
During this inspiring period, you should grasp opportunities to drop activities which bore you, and start learning new things which keep you up to date with modern trends. Many inventive ideas pop up into your mind now, and you have to find people to share them with. You will be impatient with people with entrenched ideas and opinions, and you may feel the urge to provoke others into thinking in new ways. This impatience can bring tension and misunderstanding in relationships, in which

case you should associate with people with whom you can communicate and share your visions.

Time moves fast in this period, and you too may be on the move, travelling and meeting people. Avail yourself of new transport opportunities, buy yourself a car, or hop on a plane. Develop language talents, and immerse yourself in new technological developments, particularly as regards communication. Enrol on consciousness-raising courses, or get involved in grass-roots movements. There are very few times in your life when you will be so mentally open to radically new ideas,

Synastry

1/1/2004 -> 11/15/2005



This long-term and formative influence will enable you to realise your creative potential in the following area. Try to make the most of the opportunities which now come your way.

PROFESSIONAL - MENTALITY: Mental sensitivity

This is a time when you should be able to realise your creative mental potential. If you have ambitions in connection with film, poetry, writing or any unusual forms of communication, you should do what you can to encourage the flow. You are capable of channelling subtle information and ideas now. If you are considering any kind of intellectual training, ensure that it inspires you. If you embark on some long-term study which does not interest you sufficiently, you will regret it later. You need intuitive and spiritual inspiration, so avoid business or secretarial courses which require hours of learning by rote.

Although this period is excellent for creativity, you cannot trust all the signals you receive at this time. This is partly connected with your uncritical acceptance of information you want to be true - which means you can easily be confused by a smokescreen - and partly because of a tendency to meet people who can't exactly be relied on at this time. Bear this in mind if you are considering signing contracts or making binding agreements. In many ways it is a good period to give material ambitions a rest and seek to enrich yourself mentally.

PERSONAL - MENTALITY: Mental sensitivity

During this period of enhanced mental sensitivity, you can learn many things about the way the mind functions and the nature of reality. The phrase "It's all in the mind" takes on an entirely new meaning at this time. By learning to channel your thoughts, you can alter the way you experience reality. However this period is characterised by a feeling of pronounced mental dissatisfaction - a sense that you cannot express exactly what you think and feel, and a feeling that you are not truly being listened to.

A sense of being misunderstood can increase the feeling of loneliness and isolation in your relationships. Avoid expressing disappointment in connection with this, as this will only increase the confusion of others. In reality you are being challenged to find new ways of reaching people. Bearing in mind that scientific studies have shown that communication is 55% body language, 38% voice tone and only 7% words, strive to tune in to the factors in communication which really have a deep influence. You would benefit through attending courses connected with communication at this time.

Values

and

PROFESSIONAL - VALUES: Independence

Personal freedom and honour are far more important values for you than material acquisitions or high social status. You enjoy taking risks, and are stimulated by the excitement of meeting new people. You do not allow yourself to be influenced by others in your judgement of people. Women with this position will be very independently-minded, very rarely allowing themselves to be put in a position where they can be pushed around by men. As a woman, you may scorn traditional concepts of femininity, and will actually enjoy fighting your way up in a competitive career, and as a man you will be attracted to a competitive woman.

PERSONAL - VALUES: Independence

Men with this position will be attracted to the independent female, enjoying the mutual freedom such a relationship gives; women like to see competition for their favours, and abhor dependence in a relationship. With this planetary position you will value honesty and directness - yet there is a romantic innocence which borders on naiveté. You are not the type to play your cards close to your chest, preferring a direct confrontation when sorting out misunderstandings. Both men and women have a tendency to form hasty attachments and regret at leisure. Both sexes appreciate a challenge and an element of excitement in a relationship. Dynamism and action are important ingredients in the balanced relationship.

Please enter (M)ale or (F)emale

PROFESSIONAL - VALUES: Professional taste

You use your profession as a platform for expressing your personal values, and your taste and judgement can have considerable impact on others professionally. Quite apart from aesthetic sensitivity, you are especially good at creating harmony in your working environment, both in your physical surroundings, and especially amongst colleagues. This talent can express itself on a social level, where you can deal with people as part of your job, or even on a physical level, where you can work to beautify people, or deal with precious items. Your ability to appreciate the value of the material world and social connections can bring you the professional status which you desire, if you are prepared to make the effort. You hope success will come the easy way, and if you are lucky, it will. You will be helped on your way by influential women, and you may work with women.

PERSONAL - VALUES: Professional taste

Relationships have a high priority from the point of view of personal status - perhaps because you were powerfully influenced by the values of your mother, or perhaps because of the example of a sister. Your self-esteem is a little too bound up with outside appearances as regards your relationships. You are attracted to people who have influence and success and tend to marry upwards. Love blossoms in your professional life, and you tend to be romantically attracted to your superiors at work. Later in life you would have great pleasure working with your partner, supporting his or her professional ambitions, or being supported by the partner in yours.

Venus Sextile Mercury

Please read page 13: "Mercury Sextile Venus"

Venus Trine Mars

This aspect is extremely powerful in your horoscope; it will dominate many areas of your life.

Because there is a good aspect between these two planets, you can expect the positive consequences to be strong and very creative, and the negative consequences minimal.

PROFESSIONAL - VALUES: Enjoyment

You have a dynamic creativity, but how you use it depends greatly on the nature of the aspect. Harmonious contacts between Venus and Mars give an exciting and winning nature, and the ability to work creatively with both sexes in whatever field you may be in. Inharmonious aspects also give considerable creative power, but conflict regarding sexual roles can sabotage success in one way or another. There is a strong erotic element in your character, and this can lead to sexual involvements which distract you from your business. Men with these aspects tend to be more active in their sexual pursuits, women often feel they are on the receiving end. It all depends on the unconscious signals that you send, as you have a natural sex-appeal. If all goes well you can emanate warmth and congeniality which brings professional popularity. This can lead you to success in many fields, especially those in which physical strength is combined with grace in some form. You would also work well in public relations, and in dealing with children. Entertainment and having a good time can be very important for you in your work.

PERSONAL - VALUES: Enjoyment

As Mars and Venus are the male and female archetypes, this combination brings a powerful need to resolve the dilemma between the sexes. Harmonious aspects show greater ease in this matter, but inharmonious contacts and the conjunction bring extremely difficult challenges. Often confusion about the sexual role stems from the impression given by the parents concerning their love-life, particularly if infidelity was involved. Women with this aspect often experience a strong contrast between the demands of femininity and those of sexuality, and in extreme cases the man is perceived as being a primitive only interested in sexual satisfaction. Actually the woman sends strong sexual signals but gets confused about the response she receives, not knowing whether to take the initiative, (ladies don't do that), or be passive. The paradox is that women with this aspect have strong masculine traits, and can resent the man taking the initiative. Men with this aspect will sometimes have rather feminine traits, and have difficulty taking the initiative.

Whatever the circumstances, the erotic life plays an important role in the character, and there is a strong tendency towards sexual involvements which can be a threat to stable relationships. There is in both sexes a difficulty in integrating the loving nature with passion and desire - when to be tender and affectionate, when to go your own way? When to be attached, when to be detached? When to be chaste, when to let the body take over? When a balance is found, then there is great potential to have enjoyable relationships on both the physical and spiritual level.

Venus Conjunction MC

This aspect is extremely powerful in your horoscope; every action you take will be coloured by this energy.

This connection between two planets shows a fusion of two principles for good or ill. You integrate quite different energies and express them as one process. This manifests as a strong personal character trait.

PROFESSIONAL - GOALS: Manifest beauty

You have a talent for expressing your 'sthetic judgement and sense of beauty in your career. Your charming personality

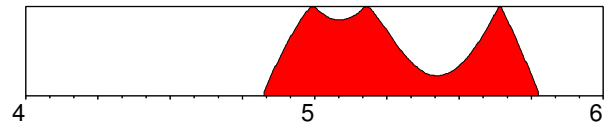
enables you to deal equally well with both people as material assets, and you achieve success through the goodwill of others. You hope that success will come to you the easy way, and if you are lucky it will. However you tend to wallow in sensory pleasures, and may be inclined to flaunt your material advantages through conspicuous consumption.

PERSONAL - GOALS: Manifest beauty

You are motivated to maintain a comfortable life-style, and generally have a fine artistic judgement - both as regards how to maintain the home, and how to pursue your career with style. At worst you are inclined to a sumptuousness and conspicuous consumption which borders on bad taste, at best you know how to create a harmonious and peaceful environment.

Synastry

10/29/2004 -> 10/11/2005



This extremely strong influence can bring change, dilemmas or separation. The likelihood of travel in connection with these issues is strong.

PROFESSIONAL - VALUES: Blessings

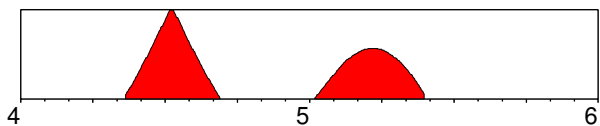
If you are the lucky type, you could not have a better period than this one. This is a time when influential people - particularly women - can guide you towards success, and when your economic resources have every chance of expansion. Success comes in particular in the cultural, intellectual or artistic field, though there is also a reasonable chance of business expansion also. Matters of fairness and justice will cause concern at this time.

It is more important to enjoy life than just work hard at this time - if you can't appreciate life's pleasures now, when can you? What are your true values and goals in your career? This is the time to include them in your plans for the future. However, if you indulge your pleasures too much, this can be an expensive time. You are very vulnerable morally now, and affairs of the heart can lead you into a costly blind alley. Don't cut corners to gain easy profit, a questionable gain now can lead to long-term loss. You are easily seduced.

PERSONAL - VALUES: Blessings

This is a romantic period par excellence, so you can expect affairs of the heart to have priority now. If you are in a relationship, your need to give and receive love will be very strong, so ensure that you indulge your emotional and erotic desires. This is a time when the power of romantic and sexual attraction is extremely strong, whilst the moral discipline is weak, so it is important to weigh the needs of the heart with other emotional costs. Sometimes it is more important to nourish and indulge the need for love than anything else, sometimes not. Let your ideals about fairness guide you.

It is a great time to travel, and if you are seeking a partner, there is one to be found in foreign climes, or in cultural or intellectual institutions. You are not inclined to fall for anyone for physical reasons alone at this time - you need a partner who can stimulate you intellectually, and expand your understanding of life and its pleasures. If you are interested in creativity, this can be a wonderful period because you gain insight and understanding of the aesthetic forces of Nature, seeing the beauty inherent in all things, and experiencing that beauty as a manifestation of truth in some way.

Synastry**5/13/2004 -> 5/26/2005**

This is a time of tension and dramatic change which may be most apparent in your domestic life, or in your career. Use the time to make much-needed changes.

PROFESSIONAL - VALUES: Building self-worth

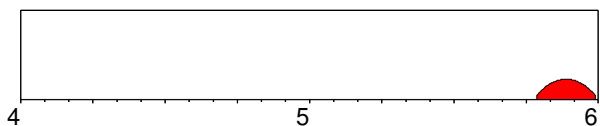
Economical issues come to the fore now, and you will probably find yourself having to work long and hard, perhaps without getting the financial rewards you would like. It pays to economise and save now, or to make very secure investments. By careful economical planning you can create the foundations for future growth, although short-term success is unlikely. Working on professional relationships may be necessary now, and you could be asked to make a long-term commitment.

It would be to your advantage to pay more attention to subtle influences on your career, such as your appearance and personal style. If you want to open doors which have been closed for you until now, learn for example the finer points of diplomacy and overcome clumsiness or shyness in dealing with people. An understanding and appreciation of taste and style can be the keys to much desired status improvements.

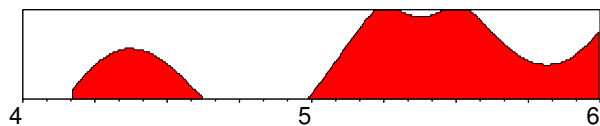
PERSONAL - VALUES: Building self-worth

You can expect many challenges in your personal relationships now. How great is your commitment? Can your affections stand the test of time? No trivial relationship can survive this period, simply because you feel that you do not have the time to waste on romantic attentions that are not genuine. Those people who are in long-term relationships will go through a testing phase - the old clichés and protestations of love will not suffice any more. A recommitment may be necessary and more time should be spent together.

Love and romance do not come easily now - and indeed it is better to be alone developing inner self-worth and reliance, rather than seeking confirmation from love affairs. Assurance of love from others will definitely not be forthcoming now, so it is not worth wasting time on lukewarm relationships - you would be better off by yourself. It is a time for giving, but not for receiving. Contentment comes from an appreciation of quality, not quantity, and from what you have got, rather than what you have not got. This also applies to material things - it is better to do without, rather than long for things which in the last analysis will not truly satisfy you.

Synastry**10/16/2005 -> 12/29/2005**

Please read page 17: "Country not found. Do you want to add new?"

Synastry**3/4/2004 -> 12/31/2005**

This influence is mildly beneficial, though you will not feel it very powerfully. A combination of effort and luck should enable you to make the most of the following influence.

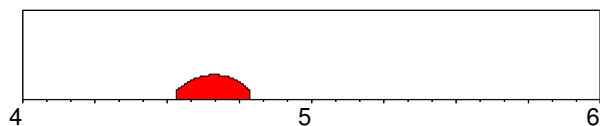
PROFESSIONAL - VALUES: Divine love

During this period you must ask yourself what has value for you. New people come into your life at this time, enhancing the quality of your professional relationships. Through their influence you should be able to discover a new appreciation of your social life, and a greater awareness of the importance of aesthetic factors for enjoyment. It is an excellent period for developing your artistic and creative interests. Indeed it might pay you to put your ambitions on the back-burner for a while, so that you can cultivate your capacity to experience life's pleasures.

Life offers many distractions at this time, and you can be led astray by your desire for magical experience. There is a great emphasis on matters of the heart, though promises made at this time are not destined to pass the test of time. You can also be seduced by economic sandcastles. Whereas it is good to seek greater quality and integrate more beauty and taste into projects, care has to be taken not to invest in glittering ventures which show surface promise but no long-term stability.

PERSONAL - VALUES: Divine love

During this period you can develop a greater awareness of the needs of the heart to find lasting values which can be relied on to bring happiness and contentment. It is an excellent time for spiritual discovery and devotion. You need to contact people now who allow themselves to be inspired by aesthetic values. These contacts will enrich your life. If you have any creative or artistic interests, set time aside to pursue these interests now. It is also a time in which love and romance can blossom and take flower. And just as Spring blossoms bring their blessings yet disappear so fast, love at this time is full of promise, yet rarely delivers lasting results. There is a tendency to get attracted to musical, artistic or spiritual people at this time, who express ideas which really appeal to your dreams. During the course of time, however, reality impinges on romance to reveal a scenario of normality and human weakness, which deflates the early romantic idealisation. The point of love in this period is to refine the heart and bring one in touch with the divine. "Better to have loved and lost, than never to have loved at all".

Synastry**7/14/2004 -> 10/14/2004**

This long-term and formative influence will enable you to realise your creative potential in the following area. Try to make the most of the opportunities which now come your way.

PROFESSIONAL - VALUES: Redefine personal values

This is a more challenging period professionally for women, than for men. This can strongly affect personal self-worth and esteem, even giving a certain unpopularity. You can no longer rely on

personal charm to achieve results. There is considerable pressure on social relationships, and you may find that allies you have counted on disappear, because of basically different views on life. Redefining your self-esteem is dependant on getting rid of false values. It is essential at this time to cut back on material things - especially luxury items. The more you cut back, the better prepared you will be for the future. Do not throw good money after bad, even if this means selling something that is costing you too much. It is better to take a loss.

You will be tempted to loan money at this time partly because of financial difficulties, but also because of changes in taste and personal values. Make sure you do not loan to acquire luxury or prestige items. Make double sure that your investment is good. If possible get by through economising. This is a good time for psychological dealings with people, and for the transformation of waste products into something of value. Where there's muck, there's brass.

PERSONAL - VALUES: Redefine personal values

This period brings a major reorientation of personal taste and values. This will affect your likes and dislikes in all matters - particularly relationships. This is the testing phase for any relationship that you doubt. Weak relationships based on inequality, power misuse, submission or false kindness cannot, and should not, survive this influence. A strong relationship will benefit from a new psychological insight which develops from a new intensity and self-examination. But even strong relationships can undergo a crisis at this time. This is one of the best periods of your life for getting into contact with your erotic needs. You may well feel a desire to explore forbidden areas of sexuality to deepen your enjoyment of sex, and it is a good time for overcoming prudishness and letting go of inhibitions. Relationships started at this time will be passionate and incredibly demanding emotionally. Some may last, bringing about a transformation in the capacity to express love and sexuality. In others the new lover is forced to give expression to every ounce of love and emotion, and may be squeezed quite dry. There is an obsessive element to love affairs at this time, and the sexual element plays a major role. There is a danger of losing one's heart to a person who does not truly care, and this can lead to a humiliating experience, and a draining sense of personal worthlessness. A relationship built on these premises cannot survive, and the sooner it is over the better. When you emerge from this period, you will have a much deeper awareness of your relationship needs. The names of those you could not trust will soon disappear from your address book.

Drives

and Retrograde

This planet is retrograde, and in the areas concerned you have a tendency to go against the grain, harvesting experiences of an intensely personal nature and drawing your own special conclusions.

PROFESSIONAL - DRIVES: Widen your horizons

You are a freedom-loving person with many strong opinions about what is right and what is wrong. There is a strong motivation to widen both your intellectual and geographical horizons. Seeing the world is an important part of your education, so you could work well in an international milieu. You need a profession which keeps you on the move and gives you an intellectual challenge. You cannot thrive in situations which limit you - freedom to make your own connections and form your own opinions is the key. Problems can arise when you get into discussions. Diplomacy is

not your strong point, and you tend to serve the undiluted truth as seen through your eyes. You may be right - you often are - but does it get results? By cultivating the habit of treating other people's ideas with respect, you can win them over to your point of view.

PERSONAL - DRIVES: Widen your horizons

You are a very active person - even overactive - with tremendous enthusiasm and persuasive power. This restlessness can mean that you are not so good at finishing the things you start, and that you have a tendency to have too many things on the go. Your drive is to understand the meaning of things - concrete results often take second place. Men with this position of Mars do not like to be limited in their relationships. They want a partner who either gives them the freedom to go out and make discoveries in the world, or who joins them in their search for excitement and understanding. Women with this placement are attracted to intelligent men, who they feel can widen their intellectual horizons. There may be relationships with men from foreign countries. It is essential for both sexes to be able to look forward to an exciting vision of the future, otherwise boredom seeps in to the relationship. Whilst intellectual stimulation and freedom are important ingredients for harmonious partnership, there is a tendency to be opinionated and argumentative. Women in particular can be particularly irate, when they feel their partner does not live up to intelligence criteria. As this is simply projection, it is important for each individual to pursue their own holy grail.

Please enter (M)ale or (F)emale

PROFESSIONAL - DRIVE: Creative enthusiasm

You are a dynamic person, willing to take a risk and happy to have a high personal profile. Other things being equal you love competition and are inspired by a good challenge. Sport may attract you or anything connected with gambling. Diplomacy is not your style, you prefer to be honest and direct in your dealings. It is important for you to express your identity in a spontaneous and hearty way. Your rough and ready charm makes you an attractive companion. You are courageous and very active and like to make things happen around you. In business you are often willing to make the first move and have a good instinct for quick profit.

PERSONAL - DRIVE: Creative enthusiasm

You may be something of a Don Juan - or if you are a woman you will be attracted to the Don Juan type. You set about conquering the heart of your loved one with determination and enthusiasm. You are not deterred by resistance - quite the opposite in fact, for you love a challenge. You probably have strong sexual appetites...perhaps they are just a part of your general healthy vitality. However troubles will come through love affairs because your lack of sexual discipline undermines relationships. At first you may see children as restrictive, but actually being a parent can be very fulfilling to you because you can have someone to play with. Your partner will appreciate your childish enthusiasm and physical lust, but anger can arise if you are not faithful.

Mars Opposition Mercury

Please read page 13: "Mercury Opposition Mars"

Mars Trine Venus

Please read page 16: "Venus Trine Mars"

Mars Square Pluto

It may be difficult for you to discern the influence of this combination of planetary energies; it is weak and may be outweighed by stronger influences.

In your chart there is disharmony between these two planetary influences, and this will be reflected by many struggles both within your mind, and out in the world.

PROFESSIONAL - DRIVE: Cutting through decay

This influence has a major effect on your career. In your life you are confronted with the issue of power - and powerlessness. You may not be aware of how forceful you are, and therefore you often encounter confrontations and get involved in power battles. Your strength in this area equips you to deal with crisis situations which other people would rather avoid. Thus you can get involved politically or socially, perhaps in trade union activity or in the corridors of power. Although you have a lot of abilities in this respect you may not find great satisfaction in these areas. You have a good deal of psychological talent, and may find fulfilment in helping people in crisis, or people who have adjustment problems. You may have psychic or healing talents.

You work hard and very intensely, often into the late hours, and actually you may have difficulty knowing when to stop. It is important to identify this obsessive quality, otherwise you can drive yourself to collapse. By structuring your working hours, you can avoid exhaustion. Life would be easier for you if you were more relaxed. You are very sensitive to what you consider the misuse of power - this is connected with humiliating situations connected with will and power in childhood. Later in life you run into similar situations, especially with authoritarian or dominating - even tyrannical - men, and you tend to overreact. This leads to battles of the will which are quite exhausting - even more for others than yourself. These situations are best defused by seeing them in a different light. By clearly showing others the limits you are prepared to accept, and by sticking to them diplomatically, you can win respect and avoid power games. Remember, if your motives are straight, you will attract people who will be straight with you. It is important for you to think positively about others. You are a powerful ally and a dangerous enemy.

PERSONAL - DRIVE: Cutting through decay

You have experienced a number of deep traumas in your childhood through events which may be secret or repressed. This can be linked to the influence of men - particular your father or a brother. Often a stepfather or half-brother plays an important role. Sometimes a sexual theme is involved. You may also have been deeply affected by someone who had a deep psychological problem. In some way your will was totally overridden at some point in your childhood, and you are profoundly affected by the humiliation this incurred. It is also possible that you experienced your father - who was dominating, but weak - being humiliated in some way.

Later on, intimate relationships are characterised by great intensity and power games. There is a need for a strong partner who can stand up and fight his or her own battles. Women with this aspect are profoundly attracted to magnetic and powerful men. Such a relationship develops predictably: where the man initially starts as the dominating figure, the woman begins to discover weaknesses as time goes by, and in doing so loses respect. When the relationship ends, the roles have been reversed and the man often ends up in a humiliating position. Men put too much focus on sexuality and the need to demonstrate masculinity. Jealousy and control can be dominating, though concealed, factors in love. The relationship tends to be marred by criticism of weaknesses and bitter discussions over influence. Often therapy can solve difficulties

connected with the complex psychological projections involved in this kind of relationship. As time goes by you will discover the benefits of your enormous energy resources and latent power. As a result you stop struggling against imagined power misuse, and simply no longer feel threatened. Deep satisfaction comes from discovering psychological and psychic talents.

SEX & POWER - DRIVE: Cutting through decay

Sexual relationships are an important battlefield for you. The man with this aspect will often demand sex several times a day - or alternatively cultivate an incredible sexual control - and strangely enough this is more because of a need to prove something to himself, than because of true desire. There is a kind of mechanical perfection with the sex act, and a deep obsession with sexual desire and taboos. The man's partner will naturally enough find these demands exhausting, and feel that tenderness is lacking.

For a woman, the fear of being powerless makes it extremely difficult for her to surrender to the pleasures of sex. This can lead her to take the initiative in sexual matters, yet paradoxically there will be a secret desire to be rendered totally helpless by a masterful lover.

There is a deep need to have a spiritually transforming sexual relationship. This may be possible through some kind of tantric sexual practice, but ultimately happiness in this area is based on a restraint which allows sexual energy to build up over a period of time, and the ability to enjoy passively and surrender.

Mars Trine MC

This aspect is extremely powerful in your horoscope; every action you take will be coloured by this energy.

Please bear in mind that the contact between these planets is harmonious, which means that you will rarely be troubled by their negative influences. They represent a resource you can draw from.

PROFESSIONAL - GOALS: Warrior

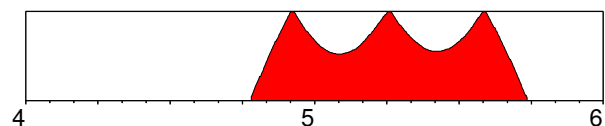
You have the warrior mentality, and tend to go for your goals with irresistible energy and enthusiasm. You will be no stranger to conflict on your way to the top, and this is as much due to your own aggressive attitude as to the behaviour of your superiors. You function best when you are master of your own fate. You are suited to any field which requires courage, action and a pioneering attitude. You thrive on competition.

PERSONAL - GOALS: Warrior

Your upbringing was characterised by tension and struggle, and this has given rise to the conviction that you have to fight to get to the top of the heap. As such you are wilful and combative, and this will affect both your career and your domestic harmony - or lack of it. At home it is better for you to channel your energy into activity rather than irritation. You are a busy person, and you will get on in life.

Synastry

10/13/2004 -> 9/26/2005



This is a mildly constructive period for you in the following area. You can expect to reap benefits, especially if you capitalise on your intellectual talents and social influence.

PROFESSIONAL - DRIVES: Burning enthusiasm

It is important for you to harness the energy and enthusiasm which surges through your body at this time. The competitive edge is sharpened, and you have the courage and vision to enter the rough and tumble of the marketplace and meet whatever challenge that confronts you. You can overcome obstacles now and expand your sphere of action. This is not a time when you can be too interested in diplomatic niceties - you want to get things done, and in a hurry. There is a burning desire to achieve. This is an excellent time for pioneering activities and expansion abroad. It is also a good time for throwing yourself into hard physical work. There is an inclination to get into confrontations now, and it is not helped by your desire to impose your beliefs and convictions on others. You may try to bully your way through. Although it is favourable to act on your convictions regarding what is right and what is wrong, it pays to gain insight first and cultivate greater tolerance.

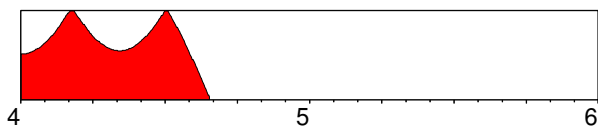
PERSONAL - DRIVES: Burning enthusiasm

This is the time to be intoxicated by a new decisiveness and a willingness to invest your energy into getting what you want. There is a refinement of the sense of purpose and the meaning of taking action. This lust for life can manifest as an expanding of your horizons through travel, taking on new intellectual challenges, getting into your body through exercise and training - and sexual exploits. There is a sharp increase in erotic drives at this time, and men will become increasingly aware of a need to prove themselves and their masculinity. This can manifest as the desire to woo and win the affections and body of a suitable quarry.

Women too become increasingly aware of sexual needs and the power of attraction to the opposite sex. There is a willingness to take the initiative in these matters. However it is actually the need to be stimulated intellectually that is paramount for women as far as attractions are concerned at this time. A relationship is also seen as a means to expand personal horizons and learn more about men and life in general. Indeed this period has most significance as regards insight into the body - and this includes greater consciousness concerning health, and the muscular system, as well as personal sexuality.

Synastry

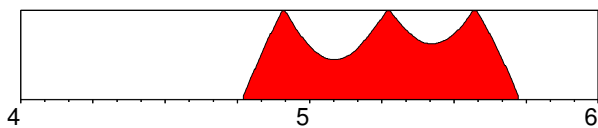
1/1/2004 -> 8/26/2004



Please read page 20: "Country not found. Do you want to add new?"

Synastry

10/9/2004 -> 9/22/2005



Major changes will occur in the area of your life described here and you will integrate new personal behaviour and attitudes in your life.

PROFESSIONAL - FOUNDATIONS: Expanding your base
You will probably find family interests and expansion in the domestic sphere taking priority over your professional ambitions at this time. Nevertheless you can experience a degree of luck in

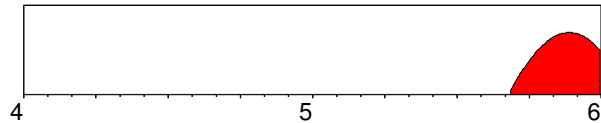
your career and perhaps the opportunity to travel or expand your sphere of influence. Surplus emotional energy enables you to be very supportive of those you work with now.

PERSONAL - FOUNDATIONS: Expanding your base

This is a time of emotional insight connected with your home, your family and your heritage. You will learn a lot about what holds a family together and what traditions are important. Psychological insight into your deepest emotional needs may lead to a reevaluation of the meaning of home to you. You will want to focus on increasing the space available to you and those close to you now.

Synastry

9/9/2005 -> 12/31/2005



This long-term and formative influence will enable you to realise your creative potential in the following area. Try to make the most of the opportunities which now come your way.

PROFESSIONAL - DRIVES: Developing willpower

This is a time to mobilise reserves of willpower and pursue goals with indefatigable determination. You can expect a lot of resistance now, especially from older men in positions of authority. Effort, long-term strategy and hard work is the remedy for problems that arise at this time. Courageous action leads to the building of lasting edifices now.

First of all it is necessary to overcome lack of self-confidence. You may feel that there are men of greater experience available to do the jobs you want, but by training and perseverance, you can - in time - achieve the goals you set yourself. If you don't succeed, try and try again. You will become stronger and more efficient. Great satisfaction can be achieved through the power of organisation and self-discipline - if you rise to the challenge, you will achieve success. This is an excellent time for hard physical work - particularly as regards building and construction.

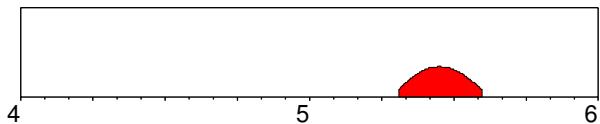
PERSONAL - DRIVES: Developing willpower

This period can be rather a trying time, and there are many obstacles to be overcome. However with hard work and determination, you should be able to have things the way you want them - finally. Men will feel unsure of themselves at this time, and there will especially be a question mark as regards their sexual needs and performance. There may be a reluctance to take the initiative in these matters for fear of being rebuffed, yet it is at precisely this time that a man can get into contact with his body, learn more about his needs and develop the confidence and assertiveness to handle sexual relationships. Circumstances may however dictate less sex during this period.

Women who experience this influence will also be concerned about their body, especially as concerned blockages preventing spontaneous enjoyment of erotic pleasures. It pays to take more time in a relationship to improve sexual contact. More patience is needed in the warming-up phase, and less focus on erogenous zones. Many sexual fears about dominance and authority can be dealt with, and the long-term effect on sexuality can be beneficial. Sometimes an older or more experienced man comes into the life now. Both sexes benefit from more exercise or training through body-building, aerobics and the like.

Synastry

4/24/2005 -> 8/7/2005



Major irritation factors arise as a result of this influence, yet if you use this period to initiate dynamic change you will be able to make dramatic progress in your life.

PROFESSIONAL - DRIVES: Sparks

This is a dynamic and inspiring period, though not without an element of danger. You can hardly tolerate anyone telling you what to do now, so you are likely to experience conflict with those in authority. If there is trouble at work, seen objectively it is probably you who is being unreasonable. Your restlessness and desire for change hardly inclines you to compromise and settle in to some boring job now. You need excitement, independence, and a challenge. You would function better on your own now, especially if you could do some travelling internationally. If you have been dreaming of setting yourself up independently, this is the time to do it. There is very little fear of taking risks during this period, and plenty of energy to go it alone.

This is an excellent period for taking initiatives concerning change and renewal. There is a strong likelihood of long-distance travel to exotic destinations. Unconventional work is favoured, particularly in connection with New Age matters. However patience is low, and temper is high. This is an explosive cocktail which can make you more provocative than usual, so take care. You may be fascinated by mechanical or technical matters now, and this is a good time to develop talents in this area.

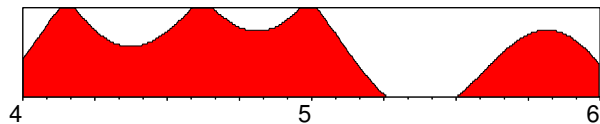
PERSONAL - DRIVES: Sparks

This is one of the most impulsive periods in your life, and you can expect a lot of excitement - or trouble - in these months. There is a resurgence of energy and a desire to break free and do something different. Feeling bored is like the ringing of an alarm clock, which is telling you to take steps to create a more stimulating backdrop for your life. People at this time are inclined to take risks - parachuting, karate, mountain climbing and similar activities exert an almost magnetic attraction. Women at this time are inclined to get restless in their relationships and be rather provocative. If unattached there is a tendency to get involved with a very unpredictable type of man who can bring an element of excitement into the life. Often there are meetings with foreigners or long-distance travel in connection with love.

Sexually this can be a time of dramatic awakening, partly due to a more experimental attitude towards sex. Though love-affairs may serve to galvanise the mind and body now, relationships are characterised by tension and periodic separation. Men experiencing this transit will also be restless, and have a roving eye. For men too, this is a good time for sexual experimentation. The urge for freedom tends to threaten established relationships. To avoid sabotaging worthwhile relationships now, it is essential to find new challenges at work or exciting projects to undertake in your private life.

Synastry

1/1/2004 -> 12/31/2005



This is a mildly constructive period for you in the following area. You can expect to reap benefits, especially if you capitalise on your intellectual talents and social influence.

PROFESSIONAL - DRIVES: Path through confusion

You will probably experience a lot of confusion as regards your goals right now. It can be extremely difficult for you to define exactly what it is you want to do, and even if you know, it can be difficult to know how to do it. This confusion will be felt as an inner dissatisfaction - at least you know what you don't want to do! Using this feeling to guide you, strive to attain your ideals and work only on those things which really interest and inspire you. This is an excellent period for idealistic work, both as far as social, creative and spiritual issues are concerned.

In your dealings with others you need to take great care. There is an air of decadence or dissolution about the people you meet at this time - particularly men. Alcohol and drugs can play a particularly negative role, and it is best to avoid stimulants as far as possible. You are very vulnerable to being cheated or led astray now - your moral fibre is being tested. There is a tendency to go behind people's backs, or to feel that others go behind your back. Keep on the straight and narrow path if you wish to avoid swampy ground.

PERSONAL - DRIVES: Path through confusion

This is a time when the will to achieve, and the ability to take an initiative seems to be undermined. You don't like what you have, but don't know what you want. By refining your motives and actions, and tuning in to spiritual or creative needs, you can acquire new talents. Women at this time are disposed towards very curious experiences with men. There can be attractions to inspiring, musical or artistic men who later turn out to be frauds or disappointing in some way. Rather shady affairs can arise, as the woman seeks to recapture some of the magic she expects from love and sexuality. This is a projection process by which the woman seeks in the man creative and magical qualities she should be developing in herself.

Men of weak character - particularly those who are easily seduced by their desires - tend to make a mess of relationships at these times through infidelity. Sexual satisfaction is found to be illusory however. It is beneficial to develop a better contact with the body now, perhaps channelling the invisible energies in the environment through Tai Chi, yoga, dance, swimming or similar activities. A new-found awareness of the body can give greater sexual satisfaction at this time. The power of the imagination and of film, music, wine etc. as sexual stimulants may be discovered. Take time off work to develop your creativity.

Wisdom

and Retrograde

At birth this planet appeared to be moving backwards relative to the Earth. You will learn special lessons in connection with attachments to people and things from the distant past, and a turning point will arise, at some point in your life, in the matters described.

PROFESSIONAL - WISDOM: Master the details

The concept of service may be an important principle for you, and you are motivated to work hard and very conscientiously, without insisting on personal recognition. Professionally you have administrative talents, and a capacity for grasping a vast amount of detail, whilst still seeing the major issues. To achieve success you need to be specific about the details in your life, without losing the overall view of where you are going. By writing your goals down, specifying precisely what you want, and by replacing a tendency to worry with a policy of only cultivating positive thoughts, you can create fertile conditions for prosperity. A major talent is your ability to delegate and get working relationships to function smoothly, without demanding personal glory. To derive the optimum from your working life it is important to avoid being bureaucratic.

PERSONAL - WISDOM: Master the details

At the time of your birth there was a collective theme concerning national health issues, international rescue and aid actions, refugees, and employment conditions. You too will be motivated by the desire and ability to be of help to other people, so in personal relationships you are often on hand to share the burden. You may be overhelpful however, and this can mean you simply get submerged in duties. There is also a strong perfectionism, which can mean that you get bogged down in specific tasks. You may have a particularly gifted insight into matters of health and healing, perhaps because of your own sensitivity in this area. Awareness and understanding of environmental influences on health and well-being will contribute to this insight, and you may have strong opinions about how to rectify faults in these areas.

Please enter (M)ale or (F)emale**PROFESSIONAL - WISDOM: Spread your opinions**

You are probably a widely-travelled person - at least you have wide interests and constantly seek to expand your mental horizons. You have a natural wisdom and the talent to discern the main issues and true meaning behind everyday events. You have natural abilities as an advisor or teacher, particularly at higher levels of education. You could be a skilled negotiator, perhaps on an international level. Your unquenchable thirst for knowledge and understanding inclines you towards a profession in which you are asked to draw conclusions after studying a wide variety of material. You may be involved in the further education system.

PERSONAL - WISDOM: Spread your opinions

You experienced considerable mental stimulation as a child, and a family member or teacher will have played an important role - perhaps as a mentor - encouraging you to learn and ask questions about life. Mental Ping-Pong at an early age will have evoked extremely strong mental convictions in you, making you a very persuasive person. You are probably knowledgeable and interesting to listen to, but you may be opinionated and dominating in an innocent kind of way. To be truly wise, one must also be receptive to other people's ideas. In relationships you respect intelligence and demand mental equality. You have little time for superficiality and are always seeking profundity. You find meaning in the small things in life.

Jupiter Trine Sun

Please read page 6: "Sun Trine Jupiter"

Jupiter Square Moon

Please read page 10: "Moon Square Jupiter"

Jupiter Conjunction Uranus

This aspect is extremely powerful in your horoscope; it will dominate many areas of your life.

This conjunction shows a fusion of energies in you. Both the positive and negative sides of this aspect will be an integral part of your character.

PROFESSIONAL - WISDOM: Exhilaration

This aspect can last for a number of months and have a strong collective influence. If you harness this influence in your career you will have a strong idealism both socially and as far as introducing new methods are concerned. Your provocative views will be a challenge to the establishment. You are an internationalist, and wish to concern yourself with issues that cut across national borders. This can bring travel to exotic lands and contact with exotic cultures. You can channel enormous enthusiasm about the future into your career - for you the path of liberation lies in innovation and experimentation. You would thrive in an international organisation, and as you also have strong humanitarian tendencies you may choose to work in a field which has to do with social reform or perhaps consciousness-raising.

PERSONAL - WISDOM: Exhilaration

You have a driving need to expand your philosophical boundaries and this can lead to unusual personal interests and provocative opinions as regards both personal and social development. You can have some form of connection to the New Age movement, and are very interested in reforms. You will almost certainly embark on dramatic long-distance travels and experience enlightenment through new contacts established thereby. In relationships you are inspired by partners and groups who can share your untraditional interests. An international group can have a radical effect on your life. You pride yourself on your open-mindedness and tolerance - yet you are intolerant of intolerance. You tend to upset groups with your radical opinions, but perhaps you could achieve your goals more effectively by understanding the traditions that lie behind established opinions.

COLLECTIVE - WISDOM: Exhilaration

As Uranus takes 84 years to orbit the Sun, and Jupiter 12 years, they meet each other in conjunction every 14 years. This cycle is experienced on a collective level as a burst of technological progress and euphoria concerning change and progress. For example Armstrong took his first step on the Moon at the exact time of a Uranus/Jupiter conjunction in 1969. President Reagan dreamt up his "Star Wars" idea at the time of the next conjunction in 1983. Humanity is gripped by exhilaration and a new sense of its destiny. This influence also brings revolutionary changes to the organised education system, student rebellions, judicial reform, New Age convictions and radical new developments in travel - for example mass tourism. It is a time when there is a surge of revolutionary energy amongst young people and often an optimistic economic expansion.

Jupiter Sextile Neptune

This aspect is extremely powerful in your horoscope; every action you take will be coloured by this energy.

When reading the following text, please bear in mind that you will for the most part experience only the positive effects of this aspect. You are particularly stimulated to learn and communicate, as regards the matters concerned.

PROFESSIONAL - WISDOM: Expansive dreams

As these planets are relatively slow-moving their influence is felt most on a collective level. Insofar as you channel their influence in your profession you will wish to work on the collective effect of

knowledge, the intellect and social influence. There may be a talent for marketing or advertising or selling a dream or vision. There can also be a drive to evangelise on a social, religious or political level. You can be strongly motivated by altruistic ideals and identify with some kind of vision or dream that transcends your own dreams. On a more down to earth level there can be a talents for dealing with oil and related products - particularly plastics. There may also be an interest in oceans, the film industry and anything which enchants on a collective level. You can be hopelessly overoptimistic - heed realistic advice!

PERSONAL - WISDOM: Expansive dreams

This influence shows that you can be moved by dreams and visions. There will be some aspect of your life in which you are touched by something magic that completely transcends your everyday life. This can bring great happiness, if you choose to cultivate your intellectual drive towards greater spiritual understanding through creative, artistic or meditative interests. At the same time there may be a total lack of grounding, or a tendency to be completely absorbed by unrealistic ideas. There are dreamers of dreams who achieve nothing, and weavers of dreams, who can bring visions down to earth. Ultimately people will be disappointed in you, if you are the former. You have the capacity to make faith and hope guiding lights for your actions.

COLLECTIVE - WISDOM: Expansive dreams

As Jupiter takes 12 years to go around the Sun and Neptune 165 years, the two planets meet in a conjunction cycle every 13 years. It is a time of spiritual progress. At this time humanity is gripped by great hopes concerned with an ideal future of some sort. People work to achieve Utopia - and though as a rule disillusion comes, there will be a period when people are joined in unselfish love for a shared ideal. This is a time when the bubble expands, when optimism exceeds all bounds, when the balloon rises to the greatest heights. Before everything comes down to earth again the human soul is enriched and touched by the divine. Intangible things become tangible in a magical way - there can be a special emphasis on music, art and the media.

Jupiter Conjunction Pluto

This aspect is extremely powerful in your horoscope, and will be a major feature of your character.

Two energies are unified into one in this planetary aspect, and you will express this energy in a very personal way, for good or ill depending on other factors in your chart.

PROFESSIONAL - WISDOM: Transformation of beliefs

This influence is often felt more collectively than personally. This is a combination that shows power in one form or another: big money, the power of ideology, the law. You will have very strong convictions and a intense sense of justice, and as such will often find yourself getting involved in issues connected with beliefs, righteousness, power and the misuse of power - especially as far as large organisations are concerned. Success comes when you encourage tolerance in yourself, and flexibility concerning your views, thereby overcome a tendency to be unreceptive to the opinions of others. Systems of positive thinking can transform your life.

PERSONAL - WISDOM: Transformation of beliefs

Your beliefs will undergo a profound transformation during the course of your life. It is important for you to bear this in mind, as you often defend your convictions with an compulsive persuasiveness which can be dominating in personal relationships. You may be aware of an obsessive need to be right, or a consuming hunger to acquire insight, and this can be

rather exhausting for those closely involved with you. By resisting the temptation to impose your beliefs on your partner, and by being open and curious about other people's opinions, you can attain harmony. You will certainly develop considerable psychological insight in your life, and this may benefit you both privately and professionally.

COLLECTIVE - WISDOM: Transformation of beliefs

Jupiter orbits the Sun every 12 years, whilst Pluto takes 246 years. Consequently Jupiter catches up with Pluto approximately every 13th year and. After 6« years, Jupiter is in opposition to Pluto, and every 3 years Jupiter is square Pluto.

This planetary cycle is reflected in events which affect the world on a global scale. But if you have an aspect between these two planets in your birth horoscope, your personal efforts can be very significant in carrying out collective transformations. You will often experience major change at the conjunction, square and opposition - at these times you will discover what your destiny is in relation to this planetary cycle and society.

This 13 year cycle show the ebb and flow of ideological and financial power. Mass changes of consciousness occur at the start of each new cycle inaugurating new collective beliefs. There will often be enormous ideological power battles in society.

Jupiter/Pluto shows the disproportionate power exerted by small secret groups, for good or ill.

Jupiter Opposition N. Node Planets Window Jupiter

This aspect is extremely powerful in your horoscope; it will dominate many areas of your life.

You will have to work hard to attain the beneficial results of this aspect. Partnership matters are central for your gaining an understanding of the principles involved and integrating them in your nature.

PROFESSIONAL - DESTINY: Wisdom in emptiness

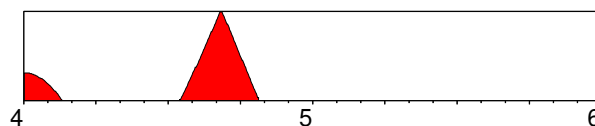
Your counsel may be sought on a wide range of issues, and you may be able to attain an influential position in large groups or organisations, because of your judgement and visions of the future. You may get involved in social projects on a grand scale, though there is a danger of being seduced by magnificent mirages because of a faulty ideology. You will grow to understand the hollowness of prestige and adulation, and will perhaps later seek refuge in a place of retreat.

PERSONAL - DESTINY: Wisdom in emptiness

You may seem a larger than life character in the circles which you frequent. You gravitate towards people who have influence and power, whether financially, socially or intellectually. Meeting people who you respect for their views and opinions is an important formative process during your life. You tend to go overboard when propagating your own philosophical ideas, but later in life you may develop a more meditative attitude to the nature of truth, perhaps through some religious experience.

Synastry

1/1/2004 -> 10/23/2004



You can expect powerful change in this area, as you learn to integrate the following influence into your life.

PROFESSIONAL - WISDOM: Development of insight

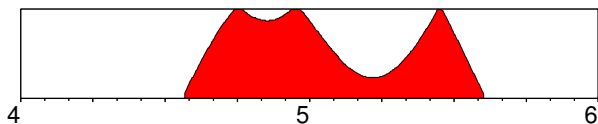
As Jupiter represents areas of your life in which hopes and

visions for the future are paramount, as well as the need to gain understanding and meaning, you can expect an increase of awareness and activities in these areas now. If you are motivated by the need for expansion and growth, then you can expect advances. There is increased focus on your ability to act on moral values and pursue your convictions concerning society. This is the time to refine your judgement and manifest your capacity to guide and counsel others. If you have a tendency to overestimate yourself, indulge moral weaknesses or to make premature judgements, then you will be confronted with this side of your character now. If self-discipline and a natural carefulness is a part of your nature however, you can take advantage of opportunities to expand.

PERSONAL - WISDOM: Development of insight
Jupiter takes 12 years to go around the Sun, so it will return to its own position at the ages of 12, 24, 36 etc., and activate itself by major aspect every 2 years. During these phases of your life you can increase your insight and understanding, and plug in to that most essential part of your life which gives you a sense of purpose and meaning. It is at these times that you can rediscover your joy in existence and faith in the future. This in turn will enable you to be fertile and grow. However if you are the type who is over-confident or immodest, then you will learn a lesson at this time. Your hopes and visions for the future should be within the bounds of possibility, and if you do not keep in touch with the ground under your feet, you lose out in the long run.

Synastry

7/27/2004 -> 8/9/2005



This influence is mildly beneficial, though you will not feel it very powerfully. A combination of effort and luck should enable you to make the most of the following influence.

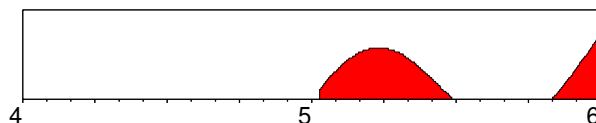
PROFESSIONAL - WISDOM: Opportunity knocks
This can be a good time in your professional life, if you are prepared to harness your vision of the future to build something lasting. Doors can open for you now, if you have done the necessary groundwork. You can at least reap the benefit of all the efforts you have made to improve your training and experience. People in authority are liable give you recognition, and this can lead to a change of status or well-earned promotion. If you overestimate your abilities, and hope for success without making effort, then there will be few benefits from this period. You should be prepared to work harder, to wield more influence, and perhaps to travel in connection with your working responsibilities. This is a good time for dealing with authorities and formalising long-term future commitments.

PERSONAL - WISDOM: Opportunity knocks
You can expect some consolidation in your life which will give you greater security now. If you are the lucky type, you will benefit from real estate dealings or home purchase. Your status will be formally confirmed in one way or another. You can move up a few steps in life, if you are prepared to make the necessary efforts and have a positive expectation of the future. You are challenged to overcome negative thinking now, and to work on your personal capacity to believe in yourself and have faith in the future. It can help for you to redefine your spiritual values and make a concrete effort to build up a more solid spiritual base. This is the time to make your opinions clear and to

take a firm standpoint.

Synastry

1/11/2005 -> 12/31/2005



Major irritation factors arise as a result of this influence, yet if you use this period to initiate dynamic change you will be able to make dramatic progress in your life.

PROFESSIONAL - WISDOM: Recreating the future
Big things can happen at this time, but there are great dangers. Over-expansion or overconfidence can be punished severely. If you are building your hopes on a bubble it will burst, and the results can be expensive. Unrealistic promises may be made, but not kept. There can be confrontation with the law or finance authorities at this time, and you will have to reach an accommodation with their demands. If there has been any cheating, laxity or corruption, this is the time bills are paid - especially as far as the tax authorities are concerned. If your plans are well-laid, success - even great success - is possible. Eliminate over-reliance on outdated advice and advisors, and search for your wisdom within. There is considerable risk of ideological confrontation. Old concepts should be eliminated in favour of new. This is an excellent time to learn and use positive thinking.

PERSONAL - WISDOM: Recreating the future
During this period you will eliminate old convictions and replace them with new. This can lead to a transformation as regards your political, intellectual or religious convictions and a far greater insight into the nature and meaning of your life. It is quite likely that you will encounter groups who have a special set of beliefs at this time. There will however be a tinge of fanaticism, so you may also choose to liberate yourself from those who tyrannically try to impose their convictions on you. You are made aware of your own tendency to be intellectually or morally dominating now. Bear in mind that beliefs do not necessarily last forever. They have to be discarded from time to time as your spiritual development proceeds.

Weak

1/1/2004 -> 3/15/2004

PROFESSIONAL - WISDOM: Explore every avenue
A considerable expansion in your social life takes place at this time, and you will find yourself travelling more, meeting people and taking advantage of your communication talents. Learning skills are boosted, you may work with new languages and you will benefit considerably from the mental stimulation of being with others. It's a good time to expand transport possibilities.

PERSONAL - WISDOM: Explore every avenue
Increased activity in your social life makes this an extrovert phase. The accent is on travel and learning together with a partner or friends. Intellectual development has major priority and you are extremely open to philosophical ideas. Not only do you want to learn more - you also have the capacity to expand your wisdom and insight.

Weak**3/16/2004 -> 6/25/2004**

PROFESSIONAL - WISDOM: Abundance

This is a good time to realise the financial benefits you deserve, perhaps by going for a raise or converting material resources. A positive belief in your own worth will almost certainly bring favourable results in this area. Invest in your talents and expect the best results. Extra income comes, but you may also want to go on a spending spree. Remember the principles of abundance - there is plenty in the world for everybody. Make sure that you are on good terms with financial authorities.

PERSONAL - WISDOM: Abundance

Growing convictions about self-worth give you the necessary confidence in your personal relationships. You may be feeling extravagant and will wish to spend money on luxuries. You may also embrace new values of a more philosophical or religious nature, and these can become an important component of intimate relationships.

Weak**6/26/2004 -> 11/29/2004**

Please read page 24: "Weak"

Weak**11/30/2004 -> 4/11/2005**

PROFESSIONAL - WISDOM: Expanding your roots

You have the capacity at this time to expand your sense of security and feeling of belonging. Success and satisfaction connected with the home and family create the foundation for greater emotional resources in connection with your career. Good fortune can arise connected with land and property, and you may experience increased support from your family.

PERSONAL - WISDOM: Expanding your roots

Other things being equal you have the opportunity to really enjoy family life at this time. Good fortune and surplus energy can be utilised to create even better conditions in your home life. It's a good time for happiness through children, and there are good home-expansion possibilities. The family may also expand. On an inner level you can gain considerable insight into hidden emotional and conditioning factors, and this can enrich intimate relationships.

Weak**4/12/2005 -> 7/29/2005**

Please read page 24: "Weak"

Weak**7/30/2005 -> 12/31/2005**

Please read page 25: "Weak"

Challenges**and**

PROFESSIONAL - SELF-RELIANCE: Solid values

Saturn was in Taurus in the years 1939-42 and 1969-72. At this time there was a strong refocusing on economic resources and the values in society. This will also be a central issue for you in your professional life, and you will find yourself struggling hard to attain the economic stability which can make you feel secure. You

have the capacity to administrate resources in one way or another, and you will pull hard, along with your generation, to create foundations for economic growth. You are also acutely aware of your own worth as measured by your own earning power. It is difficult for you to feel satisfaction in this area, and you work hard to constantly improve your financial situation, even though it may seem quite stable in the eyes of other people. You are of course strongly influenced by the spirit of the time when you were born, where society became acutely aware of scarcity.

PERSONAL - SELF-RELIANCE: Solid values

Self-worth is a major issue for you, and it is by no means easy for you to feel deserving. You may find yourself working extremely hard - for you are a persevering character - to attain material goals which can convince you of your worth as a human being. However there will be times in your life when you have to redefine your attitude towards material things as a yardstick for personal worth. One of the secrets of contentment is learning to feel an inner satisfaction and gratefulness for what you have got, rather than focusing on what you have not got. You can learn a lot by tuning into your physical senses and your bodily needs, and learning to appreciate simple sensory pleasures.

Please enter (M)ale or (F)emale

PROFESSIONAL - SELF-RELIANCE: Assume authority

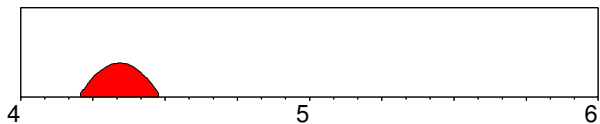
Achieving professional success and a respectable status will be a lifelong goal for which you will strive in your life. You would achieve success quicker by working a bit smarter instead of working a bit harder. On your way up the ladder of achievement you will meet many obstacles - particularly from older people in positions of power. Instead of being frustrated, see these obstacles as important tests which subtly strengthen you so that you will be able to meet future challenges. It is unlikely that you will experience success in the first 30 years of your life, but the decisions you make around the age of 30 will change your professional destiny. Important career restructuring will take place around the age of 44 and 52. At the age of 59 it is wise to replace professional goals with existential considerations. You may never notice the success you have already achieved, because you constantly set higher goals for yourself. As a long-term planner, you must be able to see how this kind of motivation eventually will lead to frustration.

PERSONAL - SELF-RELIANCE: Assume authority.

You make high demands on yourself, and this is probably due to early parental expectations which are not easy to live up to. If you strive to fulfil other people's expectations, you may never be satisfied, and you may forget to relax and enjoy the results for which you have worked so hard. Relationships suffer from too much emphasis on ambitions. Success can also be measured by your ability to cater for and respect the needs of a partner. However, you have a certain destiny to fulfil, and your personal drive and sense of responsibility means that you can have considerable impact on the society you live in. People will automatically respect you and invest you with authority.

Saturn Sextile Moon

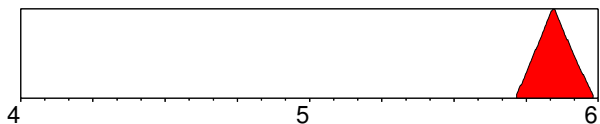
Please read page 10: "Moon Sextile Saturn"

Synastry**3/17/2004 -> 6/23/2004**

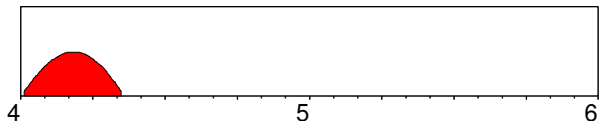
This long-term and formative influence will enable you to realise your creative potential in the following area. Try to make the most of the opportunities which now come your way.

PROFESSIONAL - SELF-RELIANCE: Expanding the framework
It is at this time of your professional life that the urge for growth and expansion confronts the forces of inertia in your career, or in society. You get to appreciate the power the establishment has over your life at this time. You are challenged to examine how you limit yourself and your future through restrictive systems or a lack of vision and faith in your abilities. If you can find the balance between learning from past experience yet allowing a future vision to inspire you, you may expect solid and steady growth at this time. It is important to expand within a certain framework and to accept the limitations imposed by professional authorities. If you do this you will be an important cog in the development of your company, or culturally in society.

PERSONAL - SELF-RELIANCE: Expanding the framework
At this time of your life you have the opportunity to loosen some of the bonds that restrict you, and lighten the load which weighs you down. This is the time that you have to adjust the awareness of what is necessary by becoming aware of the art of the possible. Restricting life patterns can be replaced or adjusted by exploring new avenues for the future. Inasmuch as you are hampered by a sense of insufficiency or inferiority as regards your abilities, you can gain renewed confidence and faith in yourself now by defining future goals and working hard to achieve them. You can build a lasting niche for yourself in society at this time by laying new foundations for the future.

Synastry**9/21/2005 -> 12/26/2005**

Please read page 26: "Country not found. Do you want to add new?"

Synastry**1/5/2004 -> 5/6/2004**

This is a mildly constructive period for you in the following area. You can expect to reap benefits, especially if you capitalise on your intellectual talents and social influence.

PROFESSIONAL - SELF-RELIANCE: Adjusting direction
As Saturn takes 29-30 years to orbit the Sun, it makes a major aspect to itself about every 5 years, and these are times when adjustments of direction and goals have to be made. At the age of 29 to 30 however, a major reorientation is necessary. You have to

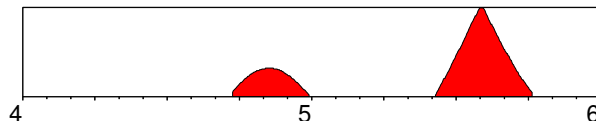
look carefully at what structures you have built up in your life and why. If you don't make changes now, when can you? Are your ambitions your own, or are you simply fulfilling the expectations of your parents or of authority figures in society?

It is essential to spend some time sensing what it is exactly you want for yourself in life. Cast aside all the unnecessary baggage which you have accumulated in your efforts to carve yourself a professional niche in society. Don't worry about personal status and ambition for the time being, and don't listen to people who tell you what they think is good for you. The older you get the more important it becomes not to waste time pursuing superficial career goals which will be of no benefit in the long run.

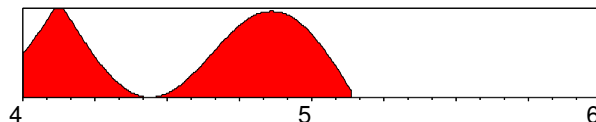
PERSONAL - SELF-RELIANCE: Adjusting direction

All phases of the 30 year Saturn cycle are important, although the ages 30, 44, and 52 are perhaps the most significant. These are times when you have a chance to review the passage of time and assess the unfolding of your life. Are you satisfied with the direction it is taking? If not, change it now. Change need not be radical, you just have to define what it is you truly want to spend time on. Remember your responsibility is first to yourself. The biggest gift you can give to others, is to show that you are satisfied with your own life.

It is important to weigh the balance between career and family commitments now. Do not be influenced by what other people expect of you - only you can know what it is that you really need in life. The yardstick for decisions at this time is: Imagine you were on your death bed...what then, would you wish you had achieved in your life? The wrong decision now can mean years wasted on unfulfilling work.

Synastry**9/23/2004 -> 10/7/2005**

Please read page 26: "Country not found. Do you want to add new?"

Synastry**1/1/2004 -> 2/19/2005**

This influence is mildly beneficial, though you will not feel it very powerfully. A combination of effort and luck should enable you to make the most of the following influence.

PROFESSIONAL - SELF-RELIANCE: Renewal of plans
This may well be a period of increased social activity and intellectual curiosity. You should ask yourself questions now concerning the viability of long-term plans and well-established traditions in your career. Should things continue as they have been, or would it be wise to experiment and integrate new techniques? Unpredictable events can arise which force you to make changes. It would be to your advantage to consider the humanitarian aspects of your work, and do something which has positive social consequences. International contacts and modern technology can also benefit you. On a deeper level you may want to take a closer look at professional commitments and change your values, so that you can have more freedom and

independence. Freedom, experimentation and flexibility are key words now, as you cannot thrive under the command of others, or with a rigid work schedule.

PERSONAL - SELF-RELIANCE: Renewal of plans

If your life is dominated by rigid patterns and tight schedules, you will be wanting to liberate yourself from their tyranny now. Many of the structures that you have built up in your life serve only to constrict you and prevent further development and growth. Now is the time to open doors and take a few risks with your life. Cut back on commitments, put your Time Manager away and brush away the cobwebs of your mind. It is no use being restricted by the same old arguments about responsibility to others - parents and partner must accept that there is also a personal responsibility to develop greater consciousness. Unpredictable things can happen now, structures break down, carefully laid plans are abandoned - you need a dash of excitement.

Weak

1/1/2004 -> 7/5/2005

PROFESSIONAL - SELF-RELIANCE: Letting go

You will find many of your hard-fought efforts coming to nothing at this time. Your strategies for success, which worked so well in the past - have now outlived their usefulness. You may not know it yet, but the time is approaching when you will be setting new goals for yourself, and a new professional cycle will begin. In the meantime it is not helpful to battle away trying to achieve old goals or apply the same old strategies to professional challenges. It may be wiser to allow things to run down, and search for the new goals which even now are taking form within. Listen to your as yet unspoken dreams for the future.

PERSONAL - SELF-RELIANCE: Letting go

This is a period when you turn within as you experience much of the outer structure of your life dissolve. It is a difficult phase for you emotionally because there are very few firm structures to hold on to. By spending time on your inner dreams, by developing your creativity, or through meditative practice, you can find enrichment on an inner level. Allow things to dissolve and search for new inspiration for the future.

Weak

7/6/2005 -> 12/31/2005

PROFESSIONAL - SELF-RELIANCE: Establish new life path

After a long period of confusion and seclusion as previous life structures underwent a dissolution process, you will now be able to glimpse the kind of life you would like to build for yourself. Over the last few years, many of the ambitions you have had will have lost their meaning. The goals which you achieved in the past are no longer relevant for your future, and you will probably have discovered that no matter how hard you have strived to create lasting achievements in the recent past, your efforts will have been washed away. However now is the time to plan a new future. Invest in your self. The visions that form now will be realities in a few years. By writing down your plans and making a blueprint for your future, you will ensure later success.

PERSONAL - SELF-RELIANCE: Establish new life path

As you slowly discern your personal path into the future, after the last few years of inner focus and outer lack of direction, it is best now to spend some time defining a new life-path. Responsibilities for others must make way for responsibility to yourself. By looking after your practical interests, paying attention to your body and establishing a program for your future, you can establish a life structure which ultimately means you have something concrete to

offer others. People might find you serious and withdrawn, but you have important decisions to make. You know that the direction you choose now will form the basic structure of your future, and that is something to be taken seriously.

Originality

and Retrograde

At birth this planet appeared to be moving backwards relative to the Earth. You will learn special lessons in connection with attachments to people and things from the distant past, and a turning point will arise, at some point in your life, in the matters described.

COLLECTIVE - ORIGINALITY: Liberty, equality, brotherhood
Uranus takes 84 years to orbit the Sun and is in this sign for 7 years, representing a collective influence on a whole generation. It shows how you are most influenced by revolutionary attitudes in society. When the Ascendant is in Aquarius this influence will be expressed in a more personal way.

Uranus was in this sign from 1885 to 1891 and again from 1968 to 1975. These periods were times of upheaval and reorientation in social relationships, particularly in regard to concepts of fairness and equality. Revolutionary activity took place on a collective level to balance out inequity between the sexes, and in this rather violent process, and the experimental attitude that followed, many relationships split up.

If this influence should manifest in a very personal way in your life, you too will espouse high ideals about equality and individual rights in relationships, and you may be a figurehead for your generation as regards new forms of relating and being together - in communal families for example. You probably do not believe in the idea that partners belong to each other body and soul, and your need to live out your own ideals can lead to very unusual relationships, and a tendency to want to lead a separate existence when the pressure is on. For you partnership can also involve a shared social involvement and responsibility.

Please enter (M)ale or (F)emale

PROFESSIONAL - ORIGINALITY: Break new mental ground
You have an number of unusual mental talents and interests. Being the type who learns things best by experimentation you don't do so well in a conventional learning environment. You have a low threshold for boredom, and your attention wanders. Yet you are inspired by new horizons and unconventional ideas, and as such you are suited to a career which requires a willingness to be inventive and explore - or perhaps a job connected with electronics, computers, the telephone or the media. Long-distance travel and mental contact with people from other cultures will probably appeal to you. There may a talent for exotic languages.

PERSONAL - ORIGINALITY: Break new mental ground
Unusual childhood circumstances were present connected with sibling relationships and your early education. There may have been a sudden interruption of your schooling, and perhaps a separation from a brother or sister. Events in this connection have a radical effect on your mental attitude. In communication you have many original and perhaps weird and provocative ideas. If you pay close attention to the way you communicate, you may find that you have a tendency to interrupt, or to go off at an angle when talking. There may be deep reasons for this connected with the desire to be listened to.

Uranus Trine Sun

Please read page 7: "Sun Trine Uranus"

Uranus Square Moon

Please read page 11: "Moon Square Uranus"

Uranus Conjunction Jupiter

Please read page 22: "Jupiter Conjunction Uranus"

Uranus Sextile Neptune

You will often feel the influence of this aspect, though stronger influences may predominate in other areas of your chart. When reading the following description, please bear in mind that you are a fast learner and overcome any difficulties involved very quickly. You can expect to use this aspect constructively and harmoniously.

PROFESSIONAL - ORIGINALITY: Spiritual revolution
This long-lasting aspect will be shared by everyone born in any particular 4-year period, but if you express its influence in your career you will be able to channel a talent for working with the electronic media on one level, or personal consciousness on another. There is an electric idealism with this aspect and very little grounding. Some people may be able to tune into latent telepathic and clairvoyant powers, and use them in their job. Contact with international companies which have strong cross-border communications brings good fortune. Work with advanced technology, especially connected with instantaneous communication is another possibility. There is an inbuilt tension between the principles of freedom and service which can be expressed in irrational political and social convictions.

PERSONAL - ORIGINALITY: Spiritual revolution
This aspect has an influence on a particular generation, but you may personally feel and express its power through an interest in aspects of human consciousness which are on a very subtle level. This can relate to the power of dreams, clairvoyance etc. - in fact the whole spectrum of the New Age movement. If personal planets also aspect these distant planetary giants, you will feel a deep longing to transcend yourself through some kind of spiritual interest. Drastic changes will occur in the pursuit of your dream, and you may be willing to abandon the secure structures you have built up to follow your ideals. Needless to say you will often be disappointed, but the whole process enhances your awareness and spiritual consciousness. You can be deluded by the allure of charismatic personalities - take care.

COLLECTIVE - ORIGINALITY: Spiritual revolution
These two planets conjoin once every 172 years, so aspects between them are rather rare. There was a trine during World War II, and a square in the mid-fifties. Most recently they were in conjunction in 1993 for the first time since 1821. As Neptune was only discovered in 1846 this last conjunction is the first to take place with the knowledge - and after Voyager 2's flypast - participation of humanity. This aspect brings deep-seated change to the consciousness of humanity. On one level the advanced technology of the period transcends border and race to join all nations together. Global communication warps and undermines accepted notions of time and space. Revolutionary change comes to governments as they integrate the very disparate need to be individual and independent with the need to belong to a greater whole. This signals a growth period for electromagnetic energy and the media, as well as all forms of electronic communication. On an inner level there is a spiritual revolution, with the flowering of esoteric interests.

Uranus Conjunction Pluto

Though not especially strong, you will be able to feel the influence of this aspect under many circumstances.

This connection between two planets shows a fusion of two principles for good or ill. You integrate quite different energies and express them as one process. This manifests as a strong personal character trait.

PROFESSIONAL - ORIGINALITY: Total revolution
This influence last over a period of years and affects whole generations. It is connected with social and technological renewal which transforms world consciousness. If this influence is made personal in your life by aspects to personal planets in your horoscope, you will meet it in the outer world in the form of revolutionary groups or outsiders, or through dealing with the technology of radical change. You may also have a talent for creating revolutionary change in large organisations. There can be a particular talent for working with computers or in organisation where automation is an issue. Or you may play a social role dealing with the personal upheavals that the electronification of society causes. Sudden and extreme employment change may arise as you get swept up in vast collective trends.

PERSONAL - ORIGINALITY: Total revolution
On a personal level you may experience periodic traumatic upheaval and this can lead to a transformation of personal consciousness. In the face of this energy the human mind is often gripped by powerful obsessions - this was for example witnessed on a collective level in Germany when Hitler came to power in 1933. (Uranus square Pluto). You will almost certainly encounter someone in your circle during your life, whose obsessions wield a fascination over you, or evoke horror. If this influence manifests on an intimate level you have to be aware of a tendency to evoke anxiety in your partner through an extreme unpredictability or self-destructiveness. By avoiding extremism and concentrating on personal growth you can mitigate tensions that may arise.

COLLECTIVE - ORIGINALITY: Total revolution
You will be very sensitive to the phases of the Uranus/Pluto cycle. As Uranus takes 84 years to go around the Sun, and Pluto 246 years, these aspects are rare. Because Pluto has an irregular orbit the cycle varies in length. The last time the two planets met in conjunction was in 1966, the one before was in 1851, and the previous one was in 1710. At the present time, the square and opposition phases of the cycle come at approximately 30 year intervals.

The contact between these planets brings dramatic and revolutionary change. Revolutionary new forms of power are discovered and utilised. 1966 was for example characterised by Flower Power, the computer revolution, factory farming etc. - very much expressing the nature of the sign Virgo in which the conjunction fell.

As part of a whole generation born with this contact, your mission may be connected with revolutionary forms of consciousness, and the total reevaluation of the collective vision of Planet Earth.

Uranus Opposition N. Node Planets Window Uranus

This aspect is extremely powerful in your horoscope, and will be a major feature of your character.

This aspect shows a strong polarisation in your chart, and difficulty in integrating the principles described. There may be travel and separation in connection with the principles described below.

PROFESSIONAL - DESTINY: The lightning rod

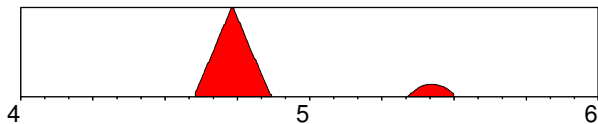
Exciting things happen around you, wherever you are, and you are destined to galvanise into action the groups and organisations you are involved with. You are a force for renewal in those situations that have ground to a halt, and you can channel a message of inspiration or revolution. On the other hand, you tend to light the bomb and walk away, often being seduced by the idea of change for its own sake, and rarely having the ability to handle the consequences. There may be an element of extremism in your nature, and an attraction to extremist groups, or to people on the fringes of society.

PERSONAL - DESTINY: The lightning rod

You are possessed of a magnetic aura which can be very inspiring for the people who meet you. Nevertheless you are also an upsetting influence, so that although people may look to you for inspiration, they may feel a certain discomfort in the long run. Indeed it is your fate to be something of a provocateur - you do not believe in people getting too comfortable. You are a force for change, and may have a particular ability for New Age interests, dealing with subtle energies etc. Dramatic consciousness change at intervals in your life can sweep the ground from beneath your feet and carry you off with your head in the clouds.

Synastry

8/9/2004 -> 7/2/2005



Major changes will occur in the area of your life described here and you will integrate new personal behaviour and attitudes in your life.

PROFESSIONAL - ORIGINALITY: The future now

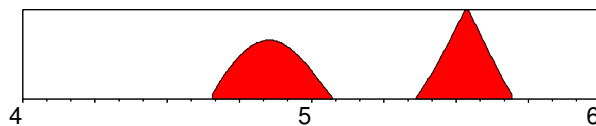
This is a time when insight and awareness of the future should be a force of inspiration and renewal in your professional life. Expect a dramatic increase in your horizons - either through long-distant travel and contact with exotic lands or peoples, or through mind-expanding activities connected with consciousness growth. Progress in your career depends on your ability to think in completely new channels and harness modern methods - both as far as technology is concerned, but also concerning revolutionary methods. This is a time of exciting possibilities and great inventiveness. The urge to be free and uncommitted may well have to be given priority over personal ambitions now.

PERSONAL - ORIGINALITY: The future now

During this period of excitement and unpredictability, you have a strong desire to expand the boundaries of your consciousness. Contact with foreign lands and cultures can blow your mind, and experiences on untraditional training courses or with experimental groups can give you a new sense of destiny or insight into transcendent aspects of your life. This is a good time for astrology and New Age interests, and to meet people who share special interests. So experiment, take a few risks and loosen your bonds you need to allow the unknown and unexpected to happen.

Synastry

8/28/2004 -> 9/11/2005



This influence is mildly beneficial, though you will not feel it very powerfully. A combination of effort and luck should enable you to make the most of the following influence.

PROFESSIONAL - ORIGINALITY: Limiting individualism

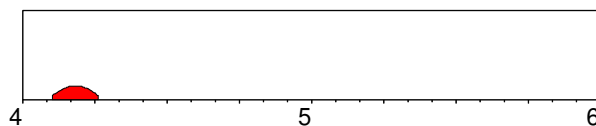
This influence may not be so obvious in your life, unless you have strong Aquarius characteristics. It is a time when it pays to make constructive use of modern techniques in your career, or perhaps pursue interests connected with exotic cultures or people. Concrete work on untraditional or new age interests is also favoured. You will probably find that you will have to make some compromises with your tendency to be an outsider and to hold society at arm's length. It pays to build a bridge between old traditions and modern trends. Social idealism and commitment is favoured.

PERSONAL - ORIGINALITY: Limiting individualism

During this phase of your life, you will find that you have to take more responsibility for those sides of your nature which are outrageous or provocative. Authority figures will demand more self-discipline and social awareness, and you will not be permitted to merely indulge your extremist views. However this is a good time to develop your interests in original and untraditional subjects, new age matters, and global awareness, especially if you have constructive plans in these fields. This may be a time when you will want to make a more formal commitment to an unusual group.

Synastry

2/8/2004 -> 4/5/2004



Please read page 29: "Country not found. Do you want to add new?"

Transcendence

and Retrograde

Because of the relative position of this planet in relationship to the Sun and Earth, it appears to be moving backwards. This may make you more thoughtful or introverted in the area concerned.

COLLECTIVE - TRANSCENDENCE: Transmutation

Neptune takes 165 years to orbit the Sun, and approximately 14 years to go through one sign. Its influence affects a whole generation, and is associated with a new sensory and spiritual awareness, and greater compassion, in connection with the sign it is in. For most people this influence is experienced on a collective level, but those who have their Ascendant in Pisces will express it in a personal way in their lives.

Neptune was in Scorpio from 1793 to 1806, and again from 1955 to 1970. There was a deep collective awakening of hidden emotional drives at this time, especially activated by musical developments and the influence of the media. The deepest fears

of humanity seeped to the surface, and people were forced to develop new attitudes to death and destruction - a process which on the one hand enriched society on a spiritual level, and on the other created a certain mass hysteria.

If you channel this collective influence in a personal way, you will have a deep fascination with hidden and tabu matters, and with sexuality and the occult. At the same time there may be musical or magical talents which enable you to mobilise hidden powers to awaken others. Your search to satisfy your desires turns out to be a spiritual dead-end, and you learn quickly that the more you fan the flames of desire, the brighter burns the flame. Greater satisfaction is attained when you use your talents on a higher emotional or spiritual level.

Please enter (M)ale or (F)emale

PROFESSIONAL - TRANSCENDENCE: Finding Self through creativity

If you choose to harness your creative abilities in your career you will be able to draw on a talent for art, or for music, perhaps in some field connected with entertainment or advertising. You do feel a need to express something ineffable in your nature in a creative way. Material success can seem unreal for you and some of your greatest experiences come when you are able to lose yourself in a self-expressive venture which transcends personal ego. In business matters you have to watch a tendency to have unrealistic expectations. Pursuing fame or recognition will prove to be illusory. You have a talent for caring for children - especially when you work evoking their creativity.

PERSONAL - TRANSCENDENCE: Finding Self through creativity
You long to be able to express yourself, and this is best done through pursuing creative or spiritual interests. You may have a number of romantic dreams, but love affairs will often bring disappointment and undermine your sense of reality. You can form strong spiritual bonds to your children, and there may be unusual circumstances connected with them. Whatever happens to them will evoke strong feelings of devotion in you and the need to sacrifice yourself for them. You have a tendency to give up your own identity for the sake of children, but this can be both a good and a bad thing. True satisfaction comes when you allow yourself to come into contact with the divine through personal creativity.

Neptune Opposition Sun

Please read page 7: "Sun Opposition Neptune"

Neptune Sextile Jupiter

Please read page 23: "Jupiter Sextile Neptune"

Neptune Sextile Uranus

Please read page 28: "Uranus Sextile Neptune"

Neptune Sextile Pluto

It may be difficult for you to discern the influence of this combination of planetary energies, as it has only a mild effect in your chart.

The sextile aspect is favourable, and stimulates your capacity to learn from experience. You can expect the negative effects to be minimal.

PROFESSIONAL - TRANSCENDENCE: Mass vision

These aspects are very rare and last a very long time. Indeed, as Pluto moves within the orbit of Neptune in the closing years of the 20th century, the present sextile aspect between the two planets lasts from 1940 to 2040 - one hundred years - so almost

everyone has it! If you are able to manifest this influence on a personal and professional level (through powerful contacts in your own horoscope), it may be connected with a deep spirituality and creativity. There can be talent for dealing with the media and wide ranging themes connected with the masses. Material issues will be less important for you than the realisation of a collective dream. There can be clairvoyant powers, and abilities connected with dreams, symbols and visualising. In industry there can be a talent for dealing with oil, the film industry or the transforming power of collective visions.

PERSONAL - TRANSCENDENCE: Mass vision

If you have this influence powerfully evoked by other factors in your horoscope, you will be deeply affected by spiritual issues, and constantly seeking to refine your consciousness. At these times you are likely to experience great personal disorientation and confusion, as old dreams and visions are replaced by new, deep psychological insights. Inner growth will have major priority in intimate relationships. During periods of your life you will undergo deep transformations in which your fantasy and imagination will play a powerful role. It is essential to learn to use your imagination in a positive way by learning about the power of the unconscious.

COLLECTIVE - TRANSCENDENCE: Mass vision

The Neptune/Pluto planetary cycle is connected with spiritual evolution on Earth and whole generations share this present harmonious aspect which - lasting as it does from 1940 - 2040 - is connected with a deep spiritual transformation process affecting the whole of human consciousness.

Neptune catches up with Pluto every 492 years, in what can be considered a spiritual seeding period for our planet. New collective ideas emerge at the start of this cycle, evoked by sudden developments of the technology and discoveries of the time. The major conjunctions since the birth of Christ were 411 AD, (disintegration of Roman empire), 904 AD, 1398, and 1891-2. This last conjunction in the sign of Gemini may therefore partly relate to the revolution of transport (flight and automobiles) and communication (radiowaves) which has such immeasurable effects on our consciousness today.

Neptune Trine N. Node Planets Window Neptune Sex

This aspect is extremely powerful in your horoscope; it will dominate many areas of your life.

Because there is a good aspect between these two planets, you can expect the positive consequences to be strong and very creative, and the negative consequences minimal.

PROFESSIONAL - DESTINY: Living a dream

Though you tend to keep yourself on the outskirts of the organisations and groups which constitute society, you may be able to exert a quiet influence on the collective mood through your deep concern or high ideals about human life. You may have Utopian principles with completely unrealistic dreams about human nature and social relationships, but you do have a guiding vision for humanity. You may have the ability to channel collective visions through the power of the media. People project their hopes and dreams onto you.

PERSONAL - DESTINY: Living a dream

Your life is a journey in search of the unattainable. You are guided by feelings and intuitions which go completely beyond your personal ego, and you may feel - or long for - a sense of connection with eternal forces in the universe. During the whole course of your worldly existence you are reminded of the emptiness of so-called reality. Many disappointments arise to

remind you of the futility of worldly ambition, and the field of human relationships is pervaded by an aura of dissatisfaction. You are in the world, but not of it.

Neptune Sesquisquare MC

This aspect is extremely powerful in your horoscope; every action you take will be coloured by this energy.

As there is tension between these two planetary influences in your chart, it will be very difficult for you to achieve the promised beneficial results before the age of 30.

PROFESSIONAL - GOALS: Empty ambition

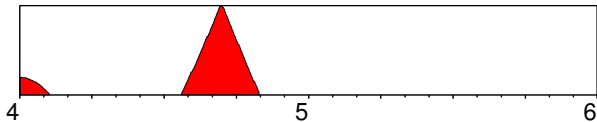
The traditional path to success is the road to disappointment for you. You need to feel inspired by goals which are not dissolved by the passage of time - goals which go beyond personal ambition. You may be motivated by creative, artistic, musical or film interests, or social ideals. Even when attaining these goals you long to be a part of something greater or to be associated with some universal sense of direction.

PERSONAL - GOALS: Empty ambition

Rocky foundations during the formative phases of your childhood can undermine your sense of direction in life. An inexplicable sense of confusion concerning your goals prevents you from building up a secure professional or domestic structure for yourself or your family. You tend to indulge unrealistic fantasies about your potential instead of getting on with the business of living. You need to have the space and opportunity to retire from the stresses of career and family pressures - and creative or musical interests can provide you with refuge.

Synastry

1/1/2004 -> 10/29/2004



This influence is mildly beneficial, though you will not feel it very powerfully. A combination of effort and luck should enable you to make the most of the following influence.

PROFESSIONAL - TRANSCENDENCE: Balloons and bubbles

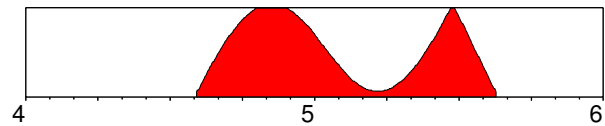
You will experience a tremendous stimulation of your imagination at this time, and this can be used to advantage if you can harness your fantasy to some creative work, especially in connection with music, imagery and the arts. If being realistic is an integral part of your career, take care. Your idealism and dreams peak at this time, and this can seriously affect your judgement. Your imagination can be gripped by great hopes, and you have a tendency to attach your hopes to a bubble which expands and expands until it bursts. Inspiration is OK, but make sure that you do not get carried away into a world of dreams. Listen to the voice of reason, and work in stages with verifiable goals.

PERSONAL - TRANSCENDENCE: Balloons and bubbles

If you are a dreamer, this is the time when your dreams take wing and carry you into surreal landscapes. If you do not want your hopes to be dashed, you must be aware of your limits and let yourself be guided by common sense. Great hopes will often turn out to be illusory, so don't let your imagination get out of control. However this is an excellent time for developing your imagination and your visualisation power. If you choose you can enrich your life with great spiritual insight, and gain a subtle knowledge about the nature of reality and the illusion of identity.

Synastry

8/5/2004 -> 8/18/2005



This is a very beneficial influence, though you may not be consciously aware of the process. Creativity and travel are favoured as you expand your capacities and sphere of influence.

PROFESSIONAL - TRANSCENDENCE: Making dreams concrete

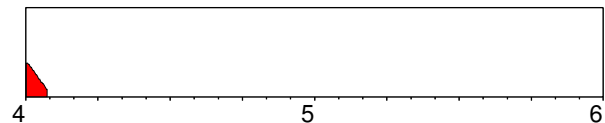
This influence may not be felt very strongly, unless you have a strong Pisces influence in your horoscope. It can be difficult to make concrete plans now, things tend to flow in an uncontrollable way, goals slip through your fingers. Instead of making strategies and long-term goals it would be an advantage to do something constructive with your creative talents. Your greatest asset at this time is your imagination, so try to think of practical applications for creative ideas. If you act in a determined manner you can realise many of your dreams and visions now. This is an excellent time for helping people who are losers in society.

PERSONAL - TRANSCENDENCE: Making dreams concrete

This is a time when you will probably feel rather alone and isolated. Money may be short, and security even shorter. You are forced to develop your inner resources now, because outer structures in your life tend to dissolve. This is a good period for developing spiritual discipline, or making long-term plans for creative development and growth. But otherwise there is a tendency to be down-and-out, or on the fringe of society. Nevertheless you may feel moved to take more responsibility for those who suffer now, or to make some sacrifice for others. Avoid negative frames of mind, or tendencies towards alcohol or pill misuse.

Synastry

1/1/2004 -> 1/27/2004



This is a time of tension and dramatic change which may be most apparent in your domestic life, or in your career. Use the time to make much-needed changes.

PROFESSIONAL - TRANSCENDENCE: Inner dimensions

This influence is rather subtle in its effect, although it can be felt strongly by those with a strong Pisces nature. It is very subliminal in nature encouraging you to get in touch with subliminal forces in society and harness them in your professional life. This influence is good for mass marketing techniques, working with the media and advertising, and international contacts. It is especially good for New Age interests, awakening latent talents for clairvoyance, astrology and the like. Unrealistic dreams and expectations can take flight now, so try to be as realistic as possible.

PERSONAL - TRANSCENDENCE: Inner dimensions

This rather subtle influence will affect those people who are sensitive to inner realms of consciousness and the imagination. It is a great time for fantasy and spiritual creativity although care has to be taken not to lose all contact with reality. Many deep emotions are stirred now, giving rise to new consciousness states

and a transcendental awareness. If you can channel these rarefied energies through meditation or group work, you can expect considerable spiritual growth now. This is the time to see auras, enter dream states and develop intuitive and clairvoyant powers.

Transformation

and Retrograde

Because this planet was retrograde at your birth, you will have an instinctive knowledge of, and attraction to, the following traits and activities. You will tend to be introvert in these matters, and pursue your own individual path in strong contrast to the path chosen by others.

COLLECTIVE - TRANSFORMATION: Servitude transformation
Pluto has an irregular orbit around the Sun which takes about 248 years. When Pluto is closest to the Sun it takes only 12 years to traverse a sign. When it is furthest away, it takes approximately 30 years. Its influence is felt collectively on a very deep level in society, bringing trauma, transformation and renewal in regard to the sign it is in. Individuals with their Ascendant in Scorpio may express this influence in a personal way, otherwise its effect is expressed as an underlying influence on a whole generation. Pluto was in Virgo from 1711 to 1725, and again from 1957 to 1971. Major transformation in employment trends took place at these times because of developments in technology which undermined traditional crafts and professions. These changes had a profound affect in both the factory and the land through industrial and agricultural reform. Socially there was a greater emphasis on services and health reform, with new developments and a certain fanaticism - as regards hygiene and cleanliness. If you are able to channel this collective influence in a personal way you may have certain interests or talents in matters of health. You are especially aware of the interrelation of body and mind, and may have some troubling ailments as a result of this interplay, or as a result of oversensitivity to additives and impurities in food or other substances which you encounter in your daily life. Daily relations with friends in your place of work may also force you to re-evaluate social bonds. Difficulties in securing employment, or a feeling of being misused at work may force you to change direction in your profession. You have the capacity to enact deep-seated changes in social service functions in society.

Please enter (M)ale or (F)emale

PROFESSIONAL - TRANSFORMATION: Deep investigation
When you express yourself - and you may often choose to be silent - you do so in a forceful, intense and compelling manner. You have a talent for getting to the bottom line of an issue, and are good at sniffing out unseen factors, and as such you have natural psychological talents. Perhaps you will deal with secrets in one way or another in your professional life. Research can also be an area which appeals to the detective in you. Other things being equal, you have a persuasive talent which can be a considerable force in tough negotiations. However you can risk alienating colleagues through your communication style. Insure that there is an even balance between your talking and your listening.

PERSONAL - TRANSFORMATION: Deep investigation
Both school and sibling relationships will have been traumatic for you. Indeed you may have a specific communication problem with a brother or sister, or have broken off contact, perhaps because of intense differences of opinion. You may have been exposed to

a family member with fanatical views, which were imposed on you in some ways. Long discussions - and long silences - characterise many of your communication experiences. As a consequence you unconsciously fear not being listened to or understood, and this gives rise to the intense and rather exhausting manner in which you communicate. If you find yourself fixing your victim with a hypnotic stare whilst you intensely drone on, you will know that this is the time to take a deep breath and relax.

Don't waste your mental energy.

Pluto Trine Sun

Please read page 7: "Sun Trine Pluto"

Pluto Square Mars

Please read page 19: "Mars Square Pluto"

Pluto Conjunction Jupiter

Please read page 23: "Jupiter Conjunction Pluto"

Pluto Conjunction Uranus

Please read page 28: "Uranus Conjunction Pluto"

Pluto Sextile Neptune

Please read page 30: "Neptune Sextile Pluto"

Pluto Opposition N. Node Planets Window Pluto Con

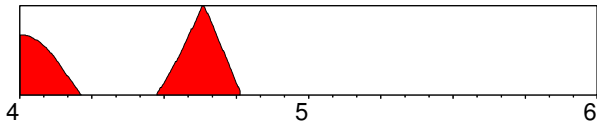
You will often feel the influence of this aspect, though stronger influences may predominate in other areas of your chart. You will have to work hard to attain the beneficial results of this aspect. Partnership matters are central for your gaining an understanding of the principles involved and integrating them in your nature.

PROFESSIONAL - DESTINY: Survival in extremity
You emit an aura of power in your social relationships, and you may get involved with groups or organisations of a secretive nature which exert a powerful yet hidden influence over the masses in society. A role will be found for you at times of great upheaval, and you will often be called upon to preside over or witness the forces of change which are completely beyond the control of normal institutions, when the hand of fate crushes the safe structures in society.

PERSONAL - DESTINY: Survival in extremity
Profound upheavals or staggering transformations can change the course of your life at key moments in your development. You will be exposed in one way or another to the destructive forces in society, or to the inner demons of fate, and this may force you to make ruthless decisions to ensure your survival. Archetypal memories of death or destruction can trouble your unconscious mind. You may also be exposed socially because you awaken anxiety or sexual undercurrents in others. You will be no stranger to loss, but you have no difficulty in turning your back on the past and starting anew.

Synastry

1/1/2004 -> 10/5/2004



You can expect powerful change in this area, as you learn to integrate the following influence into your life.

PROFESSIONAL - TRANSFORMATION: Power play

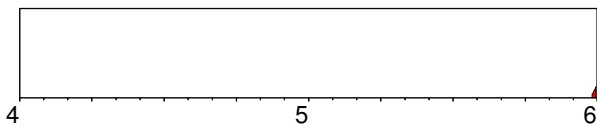
During this period you will be initiated into the use of power and secrecy in the professional sphere. This may be because you discover hidden factors, corruption or power misuse behind some professional facade, or it may be because you learn to harness your own personal power or psychological insight in your career. Whatever the circumstances you may feel a certain anxiety because of circumstances seemingly beyond your control. Make sure you are on good terms with legal and financial authorities, or at least cover your tracks if you aren't!. Big money can be involved during this period, involving large gains or losses, so make sure you have the best financial advice.

PERSONAL - TRANSFORMATION: Power play

There is a leap in your awareness of the power of the unconscious to shape your life at this time. You may choose to develop your emotional insights by learning more about psychology in one way or another. If you have any hidden anxieties or phobias you can expect them to be more acute or to come to the surface now. Even though this may be disturbing, there is a unique opportunity to understand the secret mechanisms of your mind and to eliminate the negative effect of repressions. You can become the intrepid explorer of some very dark territory indeed.

Synastry

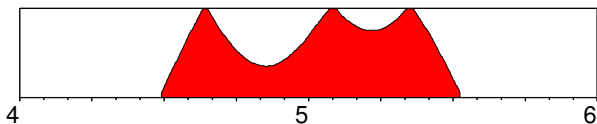
12/27/2005 -> 12/31/2005



Please read page 33: "Country not found. Do you want to add new?"

Synastry

6/28/2004 -> 7/11/2005



This is a mildly constructive period for you in the following area. You can expect to reap benefits, especially if you capitalise on your intellectual talents and social influence.

PROFESSIONAL - TRANSFORMATION: Bonds on power

This influence may not be felt very strongly, unless you have strong Scorpio traits. This is a period when you are confronted with power manifestations in society, and it can be necessary for you to summon up reserves of strength and determination to handle situations which seem beyond your control. Take care in your dealings with police, tax authorities or underworld characters, as you are liable to meet people and groups who are

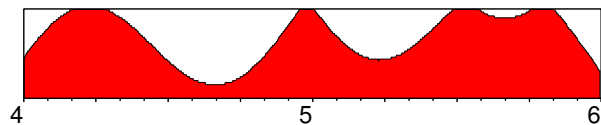
in a position to humiliate you. In professional matters you have to take a closer look at what goes on under the surface. Eliminate any corrupt elements, and look more closely at your motivation when asserting your power.

PERSONAL - TRANSFORMATION: Bonds on power

Though sometimes rather subtle, this influence can release powerful elements in your unconscious mind. If you are a victim of emotional states such as jealousy and paranoia, now is the time to make an effort to deal with them. Deep-rooted psychological complexes which manifest as obsessive behaviour will surface now and the more you try to repress them, the greater power they will have over you. A sure danger sign is if you start accusing other people of evil behaviour, or if you feel that you are being shadowed or persecuted. Inner demons manifest in outer events now, yet solutions are to be found within your own being. You can contact archetypal forces now, for example through shamanism.

Synastry

1/1/2004 -> 12/31/2005



This is a time of tension and dramatic change which may be most apparent in your domestic life, or in your career. Use the time to make much-needed changes.

PROFESSIONAL - TRANSFORMATION: Evolutionary change

This influence - which arises in the late thirties - confronts you with the need to reorganise in connection with the evolution of whatever you are concerned with professionally. You have to examine in what areas you use or misuse power, and to what extent you feel dominated by forces beyond your control. In the power struggle that follows you have to harness all your survival urges. You will learn that the need to prevail in life sometimes necessitates actions which have dubious morality - but you cannot afford to be sentimental.

PERSONAL - TRANSFORMATION: Evolutionary change

During this period deep unconscious processes rise to the surface to be dealt with by your conscious mind. It is an excellent time for getting to the root of personal problems which have haunted you for the last 35 years. Deep psychological issues which have been banished from memory now resurface, and you should have the capacity and strength to restructure these forces so that they no longer control you on a subconscious level.

Destiny

andPlanets Windowand

PROFESSIONAL - DESTINY: Rewards in heaven

During the first part of your professional career you work hard and efficiently and you exhibit a rather obsessive perfectionism which may prevent you from realising your full potential. There is a tendency to get snowed under with work, and the older you get the more monotonous work tends to be. There is a gnawing doubt about the value of the work you do, and it becomes essential for you to gain a greater perspective and define what your life's work should be. Having a sense of meaning in your life becomes more important than drudging on day after day. This can inspire you to work more creatively and become more flexible in your working

attitudes, even though you risk losing the security of regular and guaranteed work. Changing your working style can be important for your health.

PERSONAL - DESTINY: Rewards in heaven

During the course of your life there will be a transition in your values as regards the meaning of your existence. An early tendency to structure your life through work, planning and order has the effect of making everyday life mechanical and meaningless. Your work - which tends to dominate your waking hours - brings less and less satisfaction, and an existential crisis or spiritual experience will lead to a reevaluation of how you can best use your time. There will be a reorientation from a planned existence to one in which you are more open and flexible. Spiritual, artistic or creative interests are given priority, and this gives you a new sense of meaning. This transition process may involve a sacrifice of some sort, and this sacrifice brings a refinement of the soul.

Please enter (M)ale or (F)emale Planets Window Please enter (M)ale or (F)emale

PROFESSIONAL - DESTINY: Gaining an overview

You are a person with a natural talent for communicating. The need to maintain connections and keep in touch with others is a powerful motivating factor early in your life. You know a lot of people, and you spend considerable time socialising with them. As you mature, you will derive less and less satisfaction from the endless whirl of your social rounds, and there may be the sense of being full up to the brim with other people's ideas and opinions. At this point you embark on a wisdom-seeking journey.

PERSONAL - DESTINY: Gaining an overview

A turning point comes at some point of your life - particularly around the age of 37. You feel a strong need to define your own ideas and opinions, instead of regurgitating the ideas of other people. You also need to seek the mountain air, getting away from the demands of family and friends. The triviality of your everyday life begins to pall, your words seem empty or borrowed, and the things you have learned seem bereft of deeper meaning. This dissatisfaction may lead you to a life of serious study, in which you strive to gain an overall perspective which makes sense of people's busy lives. This may be coupled to a strong philosophical or religious experience.

N. Node Sextile Sun Planets Window S. Node Trine Sun

Please read page 8: "Sun Sextile N. Node Planets Window Sun Trine S. Node"

N. Node Opposition Jupiter Planets Window S. Node Conjunction Jupiter

Please read page 23: "Jupiter Opposition N. Node Planets Window Jupiter Conjunction S. Node"

N. Node Opposition Uranus Planets Window S. Node Conjunction Uranus

Please read page 29: "Uranus Opposition N. Node Planets Window Uranus Conjunction S. Node"

N. Node Trine Neptune Planets Window S. Node Sextile Neptune

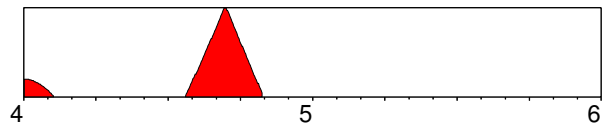
Please read page 30: "Neptune Trine N. Node Planets Window Neptune Sextile S. Node"

N. Node Opposition Pluto Planets Window S. Node Conjunction Pluto

Please read page 32: "Pluto Opposition N. Node Planets Window Pluto Conjunction S. Node"

Synastry Planets Window Synastry

1/1/2004 -> 10/28/2004



This extremely strong influence can bring change, dilemmas or separation. The likelihood of travel in connection with these issues is strong.

PROFESSIONAL - DESTINY: Understanding karma

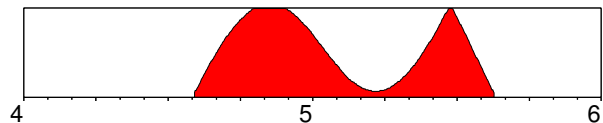
You can expect an expanded circle of contacts at this time, with a special emphasis on people who are seeking influence on a large scale in society. Opinion-makers, advisers and foreigners can bring a new perspective in connection with future planning. You may feel that your destiny is interwoven with some larger plan. Greater awareness of the direction you wish your life to take can mean making a few adjustments. Do not let inflated ideas about your destiny or personal importance lead you astray.

PERSONAL - DESTINY: Understanding karma

This is a time when meetings have particular significance in terms of karma and your growth as an individual soul. You may have a powerful experience connected with some group activity now and gain greater insight into your soul and your fate as a human being. There is also a strong tendency to be drawn into a web of spiritual illusions - though you will surely also have rewarding experiences. You are drawn to partners who have a deep significance for you now, for good or ill.

Synastry Planets Window Synastry

8/5/2004 -> 8/18/2005



This long-term and formative influence will enable you to realise your creative potential in the following area. Try to make the most of the opportunities which now come your way.

PROFESSIONAL - DESTINY: Group responsibilities

This period is characterised by a professional commitment with a group and the responsibilities that this commitment involves. The interests of the collective may turn out to be more relevant for you than your own ambitions or desire for status. Older people in authority may impose limitations on your development, and you can experience a compelling need for greater self-discipline to deal with the demands made on you.

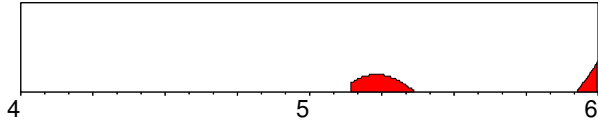
The decisions made now can have an important formative effect on your destiny. Benefit comes through subordinating ego needs for the good of others, and accepting the hand of fate, as it moves in your career.

PROFESSIONAL - DESTINY: Group responsibilities

This is a time when time will stand still for a while, so that you can take stock of your ambitions and goals in life and see where they have led you. It is a fateful period in which your responsibilities to others and your role in society can become very important. Some people feel that their life direction leads to a blind alley in these months, or that plans for the future are futile and empty. There is benefit to be attained through inner spiritual discipline, as the hunger felt at this time can not be satiated by outer success.

SynastryPlanets WindowSynastry

2/22/2005 -> 12/31/2005



Major irritation factors arise as a result of this influence, yet if you use this period to initiate dynamic change you will be able to make dramatic progress in your life.

PROFESSIONAL - DESTINY: Change of direction

There can be quite a strong reorientation of the life mission at this time - a sense that destiny steps into your path and guides you in a new direction. This will often mean that you will get involved with - or cross paths with - a very powerful group with a strong ideological orientation. You may be required to take a position as regards the use and misuse of power on a collective level. You can expect to be challenged in a mysterious and fateful way now, and your personal integrity will be put to the test.

PERSONAL - DESTINY: Change of direction

At this time you will be confronted with the negative effects of some dominating personal habits. There is an irresistible pressure to reform certain aspects of your life, and to clear the path for future progress. You will be forced to consider your personal values and ethical position, and it is at this time that the battle between the strong and weak sides of your personal nature is at its highest. When this process is over you may feel that the pages of history have been turned, and that you have rooted out a lot of negativity from your life. Strange and fated meetings with a powerful connection to the past can completely dominate your life for a period - some things will be put behind you for ever.

Planetary Symbols and their Meanings

THE SIGNS

♈	ARIES	Spontaneous activity	Ruler
♉	TAURUS	Consolidation, stability	Mars
♊	GEMINI	Duality, communication	Venus
♋	CANCER	Receptivity, nurturing	Mercury
♌	LEO	Self-realization, creativity	Moon
♍	VIRGO	Organisation, analysis	Sun
♎	LIBRA	Balance, relating	Mercury
♏	SCORPIO	Intimacy, penetration	Venus
♐	SAGITTARIUS	Knowing, expanding horizons	Pluto/Mars
♑	CAPRICORN	Responsibility, striving	Jupiter
♒	AQUARIUS	Humanitarian, consciousness	Saturn
♓	PISCES	Selflessness, spirituality	Saturn/Uranus
			Jupiter/Neptune

THE PLANETS

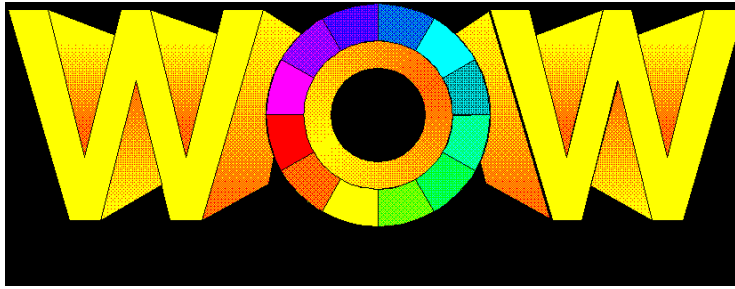
♁	THE SUN	Identity, individuality, the father
♁	THE MOON	Instincts, the unconscious, the mother
♁	MERCURY	Mentality, communication, siblings, travel
♁	VENUS	Love, romance, partnership, values, women
♁	MARS	Drives, sexuality, men, brothers, desire
♁	JUPITER	Wisdom, vision, expansion, convictions, space
♁	SATURN	Challenge, concentration, restriction, time
♁	URANUS	Originality, renewal, revolution, eccentricity
♁	NEPTUNE	Transcendence, spirituality, illusion, suffering
♁	PLUTO	Transformation, humiliation & power, underworld
♁	NORTH NODE	Destiny, group involvement, future potential
♁	SOUTH NODE	Past karma, deep experience, lessons learned

THE HOUSES

1st	HOUSE	Self absorption, personal projection, appearance
2nd	HOUSE	Values, self worth, finances and assets, security
3rd	HOUSE	Travel, local network, siblings, communication
4th	HOUSE	Foundations, family, ancestors, home atmosphere
5th	HOUSE	Self-expression, children, identity security, play
6th	HOUSE	Service, working environment, health, integration
7th	HOUSE	Partnership, dealings with others, adversaries
8th	HOUSE	Others' resources, inheritance, secret powers, death
9th	HOUSE	Long-distance travel, beliefs, higher education, law
10th	HOUSE	Ambitions, authorities, goals, professional expression
11th	HOUSE	Social affinities, groups, friendships, political visions
12th	HOUSE	Withdrawal, isolation, the divine, the inner worlds

ASPECTS

♁	CONJUNCTION	Fusion of energy, unity, singularity
♁	OPPOSITION	Separation, projection, split, polarity
♁	TRINE	Harmonious resources, creativity, insight
♁	SQUARE	Disharmony, diverging needs, conflict
♁	SEXTILE	Mental and social resources, creative harmony
♁	QUINCUNX	Servility, compulsiveness, lack of integration
♁	SEMISQUARE	Hidden tension, selfish antisocial tendencies
♁	SESQUISQUARE	Compulsive behaviour, power trips
♁	SEMISEXTILE	Either material or spiritual drive for integration



AUDRA KRUG

This horoscope is your personal cosmic fingerprint. No other person will have exactly the same combination of influences, unless they were born in the same second and exactly the same place as you were.

With 10 planets, 12 signs of the zodiac and 12 houses there are approximately 1500 simple combinations in the horoscope, and when you add to that the different degrees and combinations between planets there are tens of thousands of influences which have to be weighed and juggled in any astrological interpretation. No computer programme can do this satisfactorily.

THE DIFFERENT SECTIONS

World of Wisdom is designed to simplify this process. It indicates for example the relative strengths of different planetary influences to help the reader's judgement. Furthermore this written report is divided up into sections on identity, emotions, mentality, love and sexuality to eliminate apparent contradictions which arise in the character description. But the reader must bear in mind that contradictions will arise. People are complex and contain many contradictory traits. Diametrically opposed character descriptions will either reflect inner dilemmas or outer conflicts reflected in the behaviour of others.

PROFESSIONAL OR PERSONAL PROFILE

Each interpretation can be divided into two main sections: the professional and the personal. The professional section addresses the questions: "What talents do I have?" and "How can I use this ability?". The personal section is concerned with relationships and hidden psychological causes, and addresses the question: "How can I improve myself in this area?"

PAST, PRESENT & FUTURE

This basic module of World of Wisdom also contains a dynamic module and therefore goes beyond a static analysis of personal character. By activating the dynamic module the unfoldment of the horoscope through time is described. By analysing the current trends, it is therefore possible for the reader to gain insight into events just past, events happening at the present moment and trends in the future.

It is our hope that the written report will give those who do not have the time to bury themselves in the study of astrology, the opportunity of gaining insight into both their professional and personal life.

ADRIAN ROSS DUNCAN, ASTROLOGER

TABLE OF CONTENTS:

Wheel + Info	2
Life Path	3
Identity	5
Emotions	9
Mentality	12
Values	15
Drives	18
Wisdom	21
Challenges	25
Originality	27
Transcendence	29
Transformation	32
Destiny	33
Planetary Symbols and their Meanings	36

If you would like the WOW program for your computer, please write to:

UK: World of Wisdom, Tony Duncan,
20, Potters Lane, New Barnet, Herts EN5 5BH,
Tel: (0181) 449 0673.

DK: World of Wisdom, Postbox 95,
DK 3550 Slangerup - Tel:(+45) 7020 1008.

Homepage:

<http://wow.world-of-wisdom.com>