

BARE ESSENTUALS

san francisco

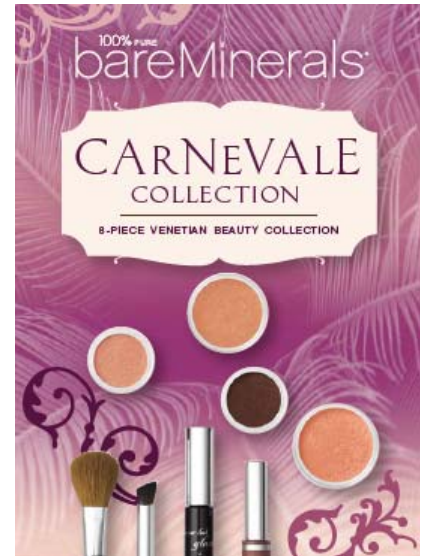
Carnevale Collection

Retail Price: \$64

Retail Value: \$134

What is it?

The intrigue of Venice comes alive through our party-perfect palette that celebrates the Spirit of the Venetian Carnevale, a centuries-old celebration with grand parades and elaborate masquerade parties. Our vibrant collection engages shimmering warm tones that naturally complement skin for an elegant, sophisticated beauty like no other. These 100% pure bareMinerals face, cheek and eyecolors impart a glowing, warm-toned complexion with naturally enchanting eyes and kissable lips perfect for a special date or an outdoor fête. Carnevale naturally delivers mystery, attraction and the whole beautiful package, so don't be surprised if you find yourself as fascinating as the festival itself.



Features and Benefits:

- Made of 100% pure bareMinerals
- Free of preservatives, oils, talc, waxes, fragrances and other skin irritants
- **Carnevale Collection Contains:**
 - **Sangria Eyecolor** (*sunkissed poppy*) ~ This velvety, sunkissed-poppy shade provides opaque coverage for all-over lid color and contouring with superb blendability.
 - **Carnival Liner Shadow** (*spiced walnut*) ~ This spiced-walnut shade offers intense color for a variety of eye-defining effects. Wear it dry for subtle or smoky looks, or wear it wet for a more intense, fine line.
 - **Sun-Kissed Blush** (*peach frost*) ~ This creamy, peach-frost shade gives your cheeks a beautiful, healthy tone while it adds a soft, radiant glow to your complexion.
 - **Warmth All-Over Face Color** (*chestnut*) ~ Gives your complexion a revitalized "fresh from the spa" glow, while adding soft luminosity with just a hint of golden bronze.
 - **Glamour Lash Mascara** (*peach nectar*) ~ This dreamy mascara assures the most lush, alluring lashes for anyone wanting to open their eyes or make their lashes look naturally fuller.
 - **Harp Lip Gloss** (*golden mauve*) ~ Enriched with moisturizing shea butter and vitamin E, this opaque, golden-mauve gloss adds shine, moisture and sensuality without any stickiness.
 - **Tapered Blush Brush** ~ This rounded brush gives light-to-medium, controlled application for blending and contouring with bareMinerals All-Over Face Colors and Blush.
 - **Double-Ended Shaping Brush** ~ The large end provides sweeping bareMinerals color from lash to brow, while the smaller end applies color to the upper and lower lash lines to create a softer, more rounded shape.

Application Tips:

- 1) Buff a sheer wash of **Sangria Eyecolor** on the eyelid from the lash base up to the brow using the smaller end of the **Double-Ended Shaping Brush**.
- 2) Apply **Carnival Liner Shadow** wet as an eyeliner along your top and bottom lash lines.
- 3) Sweep a light application of **Sun-Kissed Blush** into the contours of the cheeks using the **Tapered Blush Brush**.
- 4) Sweep **Warmth All-Over Face Color** onto areas that sun would naturally hit your face such as your forehead, eyes, cheeks, and the bridge of nose.

May 2008

BARE ESSENTUALS

san francisco

Best Results With:

- Start with the basics: **bareMinerals SPF 15 Foundation** for an all-over flawless complexion and **Mineral Veil** to achieve a soft-focus finish.
- Apply one of the **Multi-tasking Bisques** to conceal dark areas or problem spots.
- Complete your look by applying your favorite **bareMinerals 100% Natural Lipcolor**.

Available only at Nordstrom

© 2008 Bare Escentuals and Bare Escentuals Addicts