

# Cloth Doll <sup>Vol 1/1</sup> Designs

Projects for the Cloth Enthusist

Choosing Your  
Fiber Fill

Raggedy Ann  
Hand Puppet

Knitted  
Boxy Cardigan



Cover Project  
Amish Baby Doll

## Questions & Answers

### Is doeskin still being produced?

It is being produced and limited availability.  
Some places still carry a good supply.

### Whats the best muslin?

Roc-lon brand has a variety that you can even purchase from their company direct at a fraction of the cost from an outlet. It's got a very close weave that when cut on bias has a nice stretch. They even have a patterned muslin.

[www.roc-lon.com](http://www.roc-lon.com)

### I am working on a doll and I have ruined the face, what can I do?

You have options like everything else.

You can remake the head if you so desire.

If the doll is made from any type of material you can try this:

Paint out with a matching paint and fabric media, the entire face area. This will even cover needle holes.

Then take a single piece of the fabric and using small ladder stitches cover the face area. Then use an iron on face and using small stitches needle sculpt where the image can be defined.

This is useful in places where massive holes have occurred, bleach marks, or runny pens etc.

For nice faces that can be used in this manner go to:

[www.oneandonlycreations.com](http://www.oneandonlycreations.com)

**CLOTH DOLL MAKING IS A GROUP FOR SHARING CLOTH  
DOLL MAKING IDEAS AND TECHNIQUES**



**CLOTHDOLLMAKING@ YAHOO! Groups**

**HTTP://GROUPS.YAHOO.COM/GROUP/CLOTHDOLLMAKING/**

# *An antique revisited*

## **Raggedy Ann**

### **Hand Puppet**

#### **Materials:**

- 1 yard white/natural muslin**
- 1 yard blue calico**
- 1 skein red yarn or Red muslin**
- soft touch polyfil**
- felt /pens for face**
- 1/2 yard striped matreial**
- 1/2 yard black material**



**When we first Started on projects looking for new inspiration is often right under your nose.**

**When Knickerbocker was at its height with the Raggedy Ann dolls, they made all sorts of versions. And Ahnd puppets were a big seller.**

**Many Pattern companies produced patterns make your own dolls. but not to many made puppets.**

**Here we offer a simple Puppet that can be a doll too. Made to be as similar to the original as possible.**

**We have also designed a sweeter face for those of you who want a more delicate puppet.**

**Full size patterns on following pages.**

## Instructions:

Puppet

Cut 4 body pieces.

Reserve two for the lining.

Cut two legs tops on fold

Cut 4 foot (two sets) from black material

Cut 4 hands (two sets) or attach hands to body and cut as single piece.

**First make this as if it were a rag doll you will clip an opening after doll is assembled!**

Take the two reserved body pieces and trim according to the thin line on pattern. This will be the lining where your hand goes to make the puppet work.

Sew hands together if cut separate.

Sew foot fronts together.

Sew to the bottom of the leg top.

Sew down the back seam. If desired set a " sole into the foot. Otherwise sew foot closed.

Clip curved Turn right side out and stuff.

Sew from wrist around the top ending at the other side and from bottom of the wrist down each side. This allows the wrist to be open to insert the hand if hand was sewn separate.

Insert ands and ladder stitch into place.

Leaving the very bottom of the body open for inserting legs.

Fill and shape head and lower arms. Lightly stuff upper arms.

Insert legs into body as if it were saddle hip joint rag doll.

Now make a slit up the back long enough for your hand to fit in.

Insert the lining into place. Making sure to remove some arm stuffing if you can't move the arm or your fingers.

Ladder stitches the back opening together. As if setting in a sleeve.

Make the dress. Cut two dress on fold.

Sew up the top of the sleeves.

Make roll hem at neck and at wrists.

Sew up side seams. Make roll hem on dress.

Sew elastic thread at wrists or use drawstrings to tie at wrists and at neck.

Make a slit in the back of the dress to fit your hand. Make roll hem on this opening.

Place on doll.

To make bloomers

Cut two bloomer sections on fold of white material. Sew crotches together. Make paperbag roll hem on waist. Sew elastic or beading and thread ribbon. Sew inseam. Make roll hems on leg openings. Sew elastic about 1-2 inches form hem. Or place beading or pulls threads for ruffle leg.

To make apron. Cut a single white piece of fabric 20 inches long. Make roll hems on all sides.

Sew a double row of gathering threads about ½ inch from one long edge. This will gather around doll.

Secure with topstitching.

Make two long straps of white material. Make a tube, turn right side out press. Fold inside the ends. Sew into place to create an apron. Cross the traps in back of doll, and secure wit decorative buttons hard stitched into place.

Print face onto iron paper. Iron in place. Seal with matte washable fabric sealer.

To make hair.

Cut 40 red strips ½ inch wide from bright red muslin or use yarn to make hair. Attach curls in your desired method.

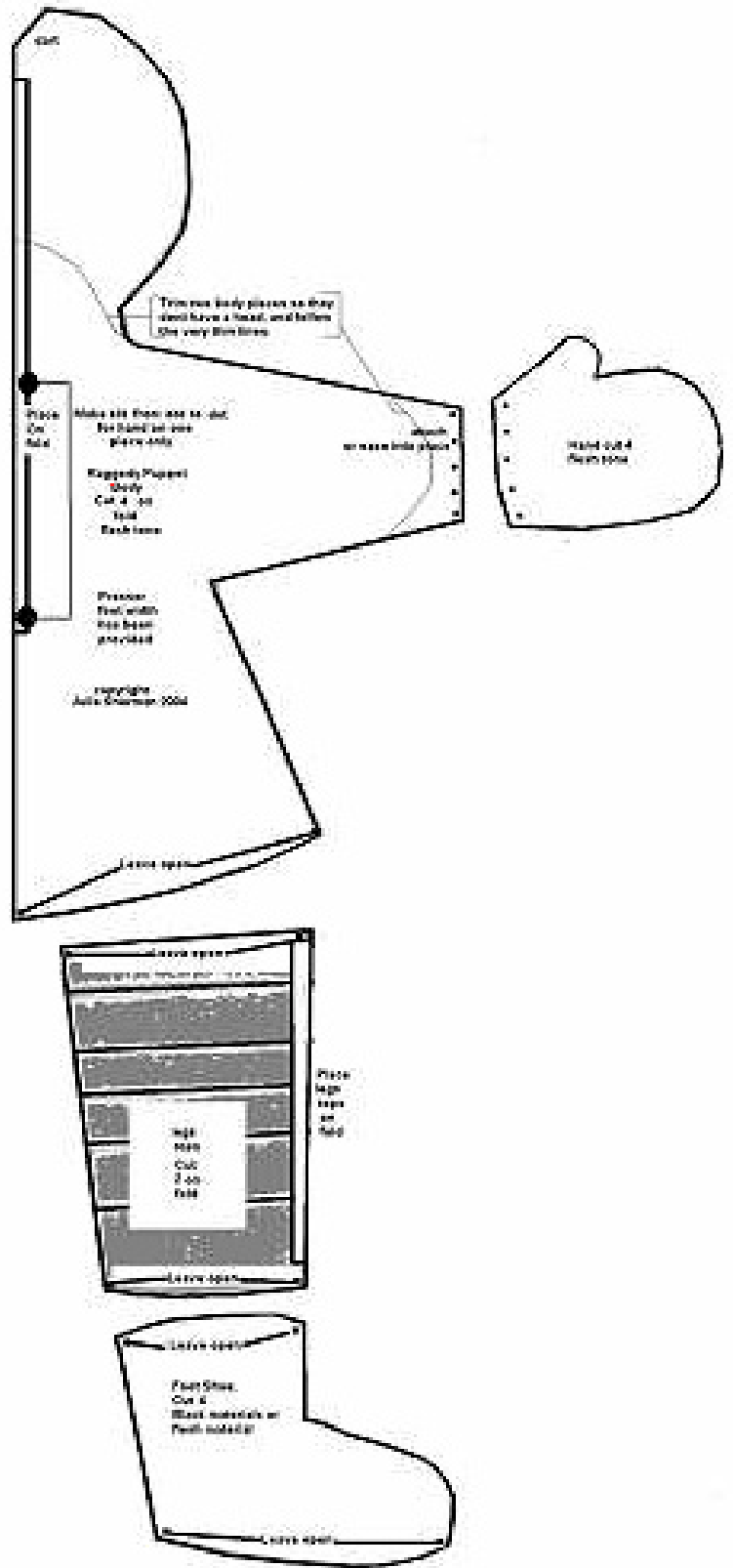
I prefer the muslin hair. Hand stitch muslin strips onto head as desired.



This is .JPG image.  
Right click to save.

Full size body pattern.  
Cut 4 on fold body.  
Cut two on fold leg top  
Cut 4 Foot.shoe.

Costume pattern and  
face transfer on next page.





**A knitted Box  
Cardigan for  
Drowsy**

**By Julie Sherman  
for Drowsy**

**This cardigan  
was knitted for  
my Drowsy doll.  
She is 34 years  
old and I make  
her new clothes  
and new bodies.**

**This knitted  
cardigan also fits the Dream Baby doll.**

**The great thing about this type of pattern is that you can adjust it to fit yourself.**

**Since I am so new at knitting, taking almost four years to get "purl" right, I thought with my triumph you newbie knitters can do this too!**

**2 balls of Peaches-N Cream Cotton on Pastel Hombre (though any color works well)**

**Size 6,7 or 8 knitting needles.**

**1 yard thin satin ribbon**

**4 small baby buttons in different colors**

**Cast on 25 stitches.**

**Knit one row**

**Purl the next row, do this for 27 rows.**

**Or make the Length of the first panel from just below the "tush" on the doll to the neck of the doll. This is the back panel.**

**Now cast on 12-15 stitches. Make enough knit one/purl one rows to go from the "tush" to just under the arm. Do another block like this.**

**Stitch these short blocks to the sides of the big back panel.**

**Cast on 10-12 stitches and make a long thin section that goes from the "tussah" level in the front to the neck.**

**Make a second section like this. These are the front panels.**

**Stitch these to the short blocks.**

**Cast on 15-20 stitches. This will be the sleeve.**



**Finished sweater  
image computer generated**

Make enough rows of knit one purl one to go from just the wrist to the neck.

Make a second piece like this.

Stitch to make a tube.

Now sew the under seam to the center of the short panel and bring up the sides of the front and the back to match. This will look out of place. Top of sleeve is part of neck.

Now take a crochet hook and thread a pretty thin ribbon from front to front going around the neck.

Tie a knot on each end.

Sew buttons equidistant. Add more buttons if needed.

Using left over thread tat button loops on opposite side of sweater for Buttonholes.

Place on doll and close. Your dolly is now warm.

## LION BRAND YARN

*...famous for quality since 1878*

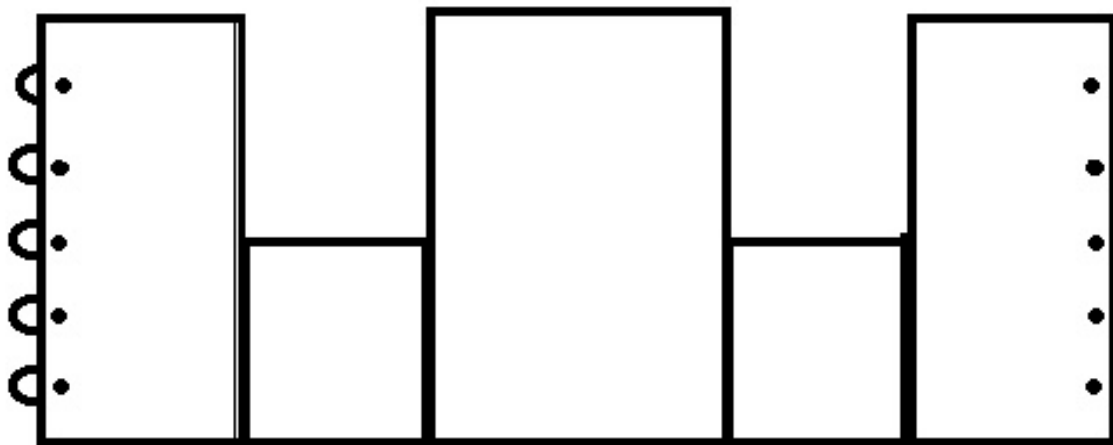
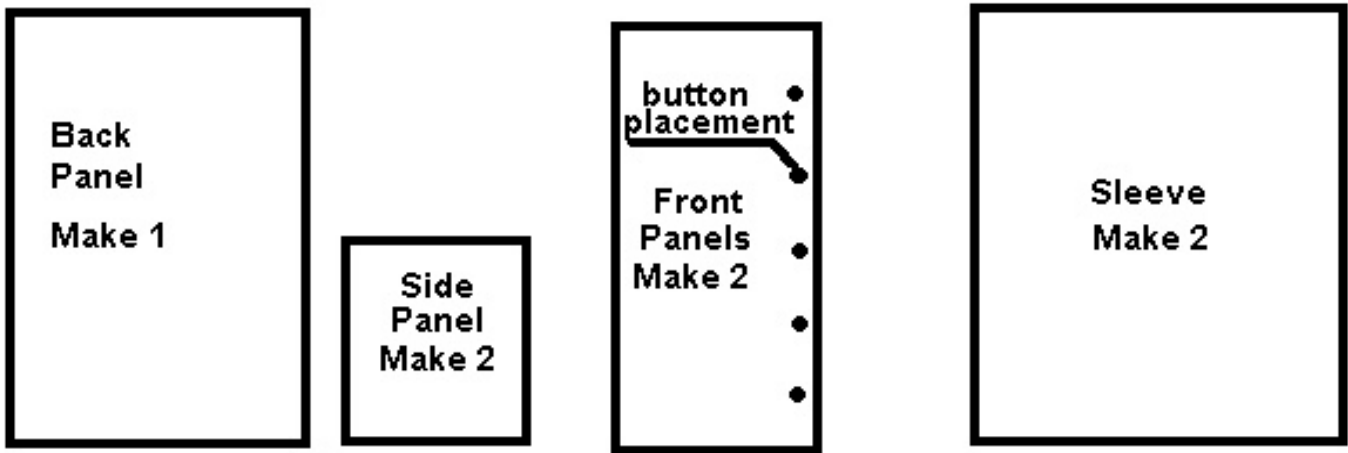


Wow! We've expanded our section of free Lion Brand items. Our historical screensaver features stylish designs from our 1912 catalog

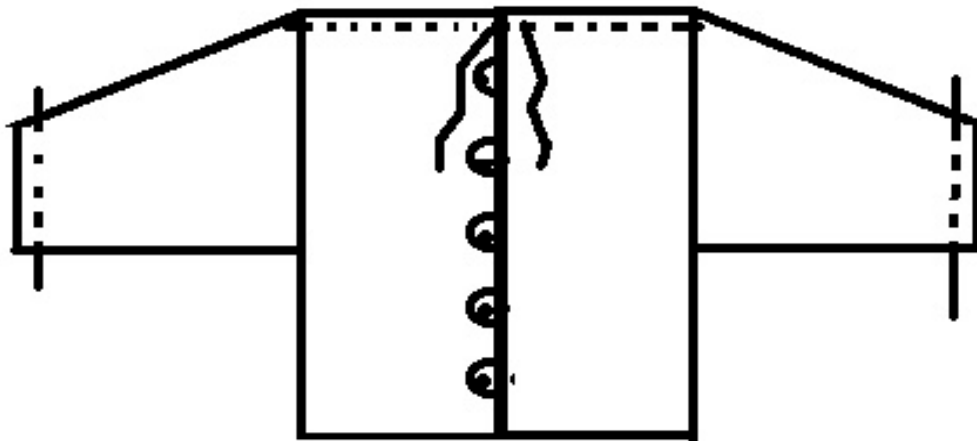


Muslin, Drapery Fabric, Duck quilted Muslin, Patterned Muslin and more.  
Rockland Industries, Inc.

800-876-2566  
Mail@roc-lon.com  
www.roc-lon.com



Assembled Sections



Finished sweater

## Getting Your Fill.

### Choosing Fiber Fill for your crafts project

J. Talley

Fiber fill. It's a staple that every home crafter uses over and over again. And there are problems that all crafters encounter time and time again. That is, shifting, lumping, degradation, odor, and so on. And with so many different types of fill out there it is often hard to know which is the best for your project, and often the price is a considered factor in which fill you choose. In is with that vast sea of fake and natural fibers that this little guide may help you in choosing a fiber filling for your project.

#### Natural Fiber VS Fake Fiber

Fiberfill's come basically in two basic forms, Natural and fake.

Natural are those that are classified as those that can be found in nature.

Cotton

Wool

Feathers

Kapok

Artificial materials came along starting in the late 1920s with the discovery of Nylon.

Liquefied coal remains were passed through a spinneret\* and cooled by air. As the cooled

Liquid came through these holes it solidified and became strand of very fine threads.

Nylon is still by product of coal liquefaction or also known as coal fired electric power plants.

So the next time you put on panty hose you'll think, ewwww I am wearing coal.

Anyway those threads that are not used are bundled together and tossed on the side.

This was the first artificial" sanitary" toy fill.

Many toys from the 1920s began containing this new product. Often labeled Sanitary, Safe or other Words to describe it. It was from this forcing of liquid at high pressure through micro fine spinnerets\*\* that many of the newly used fills got their start.

Natural fibers have an advantage. They usually don't degrade\* if placed in a very high temperature setting such as an autoclave. Though they are now not cheap, they were readily available as by products and often found discarded.

Artificial fibers have become a standard of today.

Able to be produced cheap, they can be made from simple combinations of two or three cheap chemicals.

Their disadvantage is that they have a low melting point. That is a High heat setting on a drier can melt the fibers. This is often why cautionary statements on pillows say pillow tumble. It is a low temperature forced air method that dries pillows.

Since the mid 1950s the plastics industry has created a number of new chemical combinations. And that is good for the crafts industry. As this gave the crafting and manufacturing world a cheaper product and often with qualities that would not ordinarily be found in Natural fills.

But choosing one of these for your project can be confusing.

#### Choosing your fill

Depending on your project you are going to have to know that some fills will work better than others.

When making an antique reproduction, do not overlook the word "reproduction".

According to Antiquarians and museum experts, To be considered a true "reproduction" it must follow the same materials as the original. As in the case of the Columbia Exposition doll you must use oilcloth, oil paints, and stuff with Kapok and wool. The dress material must be of the same weave and texture as the original. To mix fibers or to use modern materials you are making and "interpretive reproduction" or

“ Replica”. The change in materials will mark the difference in auction gains. So if you choose to auction your item off, if it’s a true reproduction, even down to the paint stroke direction, you can get more for the item than an interpretation using modern materials.

And that is one consideration in making an item. Are you planning on keepsake or auction or sale? But that can only be one concern. Is it going to be play safe or collectable? Will it be washed or dry-cleaned? These are also things to consider.

The new fills from Airtex, Mountain Mist and Fairfield are the main companies that you have to choose from. They all make three levels of products.

Manufacturers grade AA and A  
Home crafting Grade  
Exclusive/Siliconized grade

Manufacturing grades are often the types of fill that are coarse and come in huge boxes. They expand well, though have a tendency to clump. But they do keep product cost down.

You can purchase this type of grade in a large box. It can also be called Home crafting grade when sold in both boxes smaller bags. Though some companies do have a slightly different grade for home use.

In some companies’ home use fills are not as hard to handle. In manufacturing a machine literally blows the fill into the item so very little handling is done.

Since it has to be hand manipulated, often the home grade is just a bit softer. It still has a tendency to shift and bulge. It can also lump. As you can see for yourself when you take balls of Polyfil and pack a doll leg. Looks a little like cellulite.

Exclusive grade or Manufacturing grade AA. This is what is called siliconized fiberfill. This is the stuff that crafting dreams are made of.

The fiber is more elastic than standard polyester fiber fill. The two chemicals that make up fiberfill have a third added. This provided the elastic feel and extra smooth feel.

Think of it this way; if you use a harsh shampoo day after day your hair has bounce but not much life, versus using a shampoo with an excellent conditioner. Your hair has shine and bounce and resiliency. So is the same with the new softer siliconized fills.

The fibers are smoother and springy. So a little goes along way. This is also the AA standard in Gund dolls. What makes their dolls and toys so springy is the siliconized fill and high quality fake fur. They use imitation coat grade versus standard fake fur grade as well.

Depending on what grade of toy you are making your fill can add to subtract. If you want something springy bouncy and soft, you want something that gives that soft springy squooshy feel. So siliconized is what you use. At 1.60 a bag for Soft touch you can get 2 medium size teddy bears or at least two 24-inch dolls from a single bag. Or a pillow that is reminiscent of feathers without the sneezes.

If you are making Reproduction you must use those fills that were available at the time. If for example you are working with Felt. That doll needs to be hard not soft. So a firmer even pull fill is needed. That can be combed lambs wool or craft grade fill.

Airtex premium and Poly\_Fil Soft Touch are equal in texture. They are siliconized and a little goes along way.

Airtex Fill/ Mountain Mist/ Poly-Fil are all crafters grade. Heavy and tend to lump. But great for making durable harder dolls.

Kapok- Fiber from the inside of large seeds.  
Wool” wool shear, lambs wool. Can be springy.

Cotton wadding/balls/roll etc. Hard, Autoclaveable, washable and bleachable, makes for hard feel or firm pack to doll.

Feathers. A nice soft combination for pillow dolls, boudoir dolls, pillow people, very soft and floppy. A forerunner to body beads.

Body beads: tiny polymer/acrylic beads. Some brands are washable. Dangerous as children and pets will swallow them. If using anything to be near infants or pets choose a natural product that digestible.

Buckwheat hulls, wild rice etc.

So choose wise Cut out

1 head front, 1 head center and two head sides.

2 sets arms, 2 sets legs

Body pieces.

Cut out dress pieces as indicated on pattern pieces.

Please note you may use matching colored threads, White and natural was used for the prototypes.

All pattern pieces go with even weave and are placed on straight of grain.

Sew all darts on all pieces.

Sew head center to head front, joining at dot.

Sew head sides into place joining at squares.

Clip al seams turn right side out and stuff. Shaping if desired. Pack full not hard.

Sew arms and legs all starting and stopping at the place marked “ leave open”.

Clip curves, turn right side out and stuff, firm but not hard.

Ladder stitch the opening closed.

Choose your fill carefully and your projects will always turn out the way they should.

**Backside of the Moon**

for all your  
doll making supplies

Primgol@bellsouth.net



Doll hair in many colors of natural

Spun wool, curls and ringlets

woolfelt

linen thread

custom tea stained muslin

<http://becksideofmoon.safeshopper.com/>



Detachment 1- HOW Battery

2/278 ACR

Jefferson City,

Jefferson County Tennessee

## Antiquing Fabric with Tea

Ever wondered how to get that nice aged look to fabric? Why not try what the experts do. Tea staining using tea {a natural dye} is the simplest way to get that nice aged /antique look. Tea staining works best on natural fabric such as cottons, linens and wools. The darker you want your fabric the more tea bags you should use and let the fabric soak longer. {Remember fabric looks darker when wet}. Soaking fabric in HOT water tea bath works better for the darker look and cold is good if you want a light overall staining. Soaking time is up to you, 5 to 30 minutes or longer. Whether it is instant or brewed is no matter .The real trick is how you prepare your fabric first

1. Always prewash the fabric
2. Don't use fabric softeners or dryer sheets
3. Leave the fabric to be stained damp {it accepts the color better}

Now onto staining, this part is where you can play to find your own desired look.

This recipe will dye one yard of fabric of muslin, just double recipe for 2 yards, triple for 3 and so on. Use a container big enough to move freely in the bath. (If container is too small, you'll have wrinkles that the hot water will permanently set. {Hey you might want that}

1-yard pre washed fabric

5 tea bags

2 cups hot water

1 tablespoon white vinegar

Heat water to rolling boil, add tea, and turn off heat.

Let bags soak least 10 minutes {then remove pressing between 2 spoons}

Now add white vinegar {White vinegar acts as a mordant to set the color} submerge fabric in pan, using a wooden spoon to move thoroughly covering fabric. Let set 10 to 30 minutes. Each time you dye make a note what time soaked and if you added more or less tea bags. Try different ways till you have the recipe you like best. EXPERIMENT a Little with tea bag amounts, brands and time soaked. Now with rubber gloves & spoon lift fabric out and wring dye out. To get a mottled look don't rinse just wade fabric up and set aside to dry. When dry iron fabric out flat. If you'd like an even look, rinse in cold water then dry flat.

I just have what I tried. I was on a time crunch and had an order come in for 1/2 yard of tea stained fabric. So I ripped a piece of muslin to 1/2 yard and ran the fabric under hot water at the kitchen sink. I made sure I got it really wet all over with hottest water I could handle. Then I grabbed a gallon zip lock and without wringing the water out I plopped the fabric dripping into the gallon zip lock, grabbed my unsweetened instant tea crystals and measured out 2 tablespoons into the bag right on top of the fabric, then 1 tsp white vinegar. Then zipped the bag shut, not leaving much air while closing. Now I scrunched and squished the fabric in the bag till tea crystals were all dissolved. I then laid the bag out side maybe a hour then with rubber gloved hands I reached into the bag and grabbed the corner of the fabric and pinned by this corner to my clothesline, Now don't wring or straighten the fabric at all in fact if you can start it out by hang all kind of scrunched the more mottled look you have. My goal is to get your creative juices flowing, ready to try tea staining?

By, Susan Chouinard ~Backside of the Moon Primitives



# Cover Story:

## Amish Babies

There has always been a fascination with the Amish community.

Often we in modern world wonder how they do it! To get along with no electricity or minimal uses of it, to actually abide by rules and law as set forth, and stand by their convictions.

We marvel at the women who work just as tirelessly beside the men, in their own orders and their own work.

Yet we often as outsiders intrude on their solitude, Not realizing that they are just people like us. Some religious /lifestyle communities have a camaraderie with them and can often call the Amish Lhonsman (land brother).

Their lives revolve around seasons, and work and living as a whole. Understanding that simplicity is often the best manager of all.

The Amish has some laws that are nice to follow ourselves. Perhaps if we took some of the ideals actually set for no matter which bible you look at, we might actually better ourselves.

So what has that got to do with dolls? You might be asking. Simple, as always. There is a commandment, one that you should remember from Sunday school that commands us “ not to make false idols, graven images or anything that resembles those things that dwell in heaven or live on earth”.

Dolls actually come under that idea. When we look at dolls they have eyes and faces and resemble those things that dwell on earth, Us.

But there is always a desire for children to have dolls and playthings. So the Amish in their infinite wisdom, removed the faces, and didn't detail the doll. In other words they kept them plain.

The fascination of making Amish dolls of course extends to every doll maker today. No faces, but beautiful squooshable dolls to love.

I would like to thank the women of Intercourse Pennsylvania, and their liaison for making this doll happen!



### Materials:

1 yard white/natural Muslin

1 yard Black Cotton

1 yard Lavender Cotton

Optional colors

Pink, blue or pretty green, baby yellow

1 bag Soft Touch Poly fill

Optional: to make arms and legs move (4) 1" buttons

Buckram for bonnet



## Instructions:



Cut out

1 head front, 1 head center and two head sides.

2 sets arms, 2 sets legs

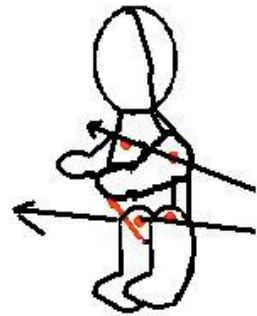
Body pieces.

Cut out dress pieces as indicated on pattern pieces.

Please note you may use matching colored threads, White and natural was used for the prototypes.

All pattern pieces go with even weave and are placed on straight of grain.

1. Sew all darts on all pieces.
2. Sew head center to head front, joining at dot.
3. Sew head sides into place joining at squares.
4. Clip all seams turn right side out and stuff. Shaping if desired. Pack full not hard.
5. Sew arms and legs all starting and stopping at the place marked "leave open".
6. Clip curves, turn right side out and stuff, firm but not hard.
7. Ladder stitch the opening closed.
8. Sew Body. Leaving neck open for stuffing and turning. Clip all curves.
9. Turn right side out and stuff firm.
10. Ladder -stitch the head onto the neck.
11. Attach arms using large buttons.
12. Mark at top curve of finished arm and legs. Using heavy-duty carpet thread or other yarn, thread the button on. Sew through the doll body to the opposite side and thread through other arm and leg.
13. Your doll is now done. Of course this is a wonderful body to do many things with



### **Dress and Apron Instructions**

1. To make the dress:
2. Cut 2 bodice backs and 1 bodice front.
3. Cut two sections of cloth 9" X 18" this will be the dress bottom.
4. Make wide roll hem on bodice back pieces.
5. Place bodice backs to the hems overlap or meet.
6. Run gathering stitch along one long edge of each bottom piece.
7. Fit to bodice front bottom edge and do the same for the back.
8. Sew into place. Remove running stitch if desired.
9. Make a running stitch on curve of sleeve top.
10. Sew sleeve straight edges together as tube.
11. Make a hem at the wrist. And set aside.
12. Sew shoulder seams of bodice.
13. Make roll hem at neck.
14. Sew side seams, from bottom of dress to arm opening.
15. Make roll hem on dress bottom.
16. Insert gathered sleeve into armhole and stitch in place.
17. Place closure at the top of the neck back.
18. Dress now done. Press for crispness and place on doll.

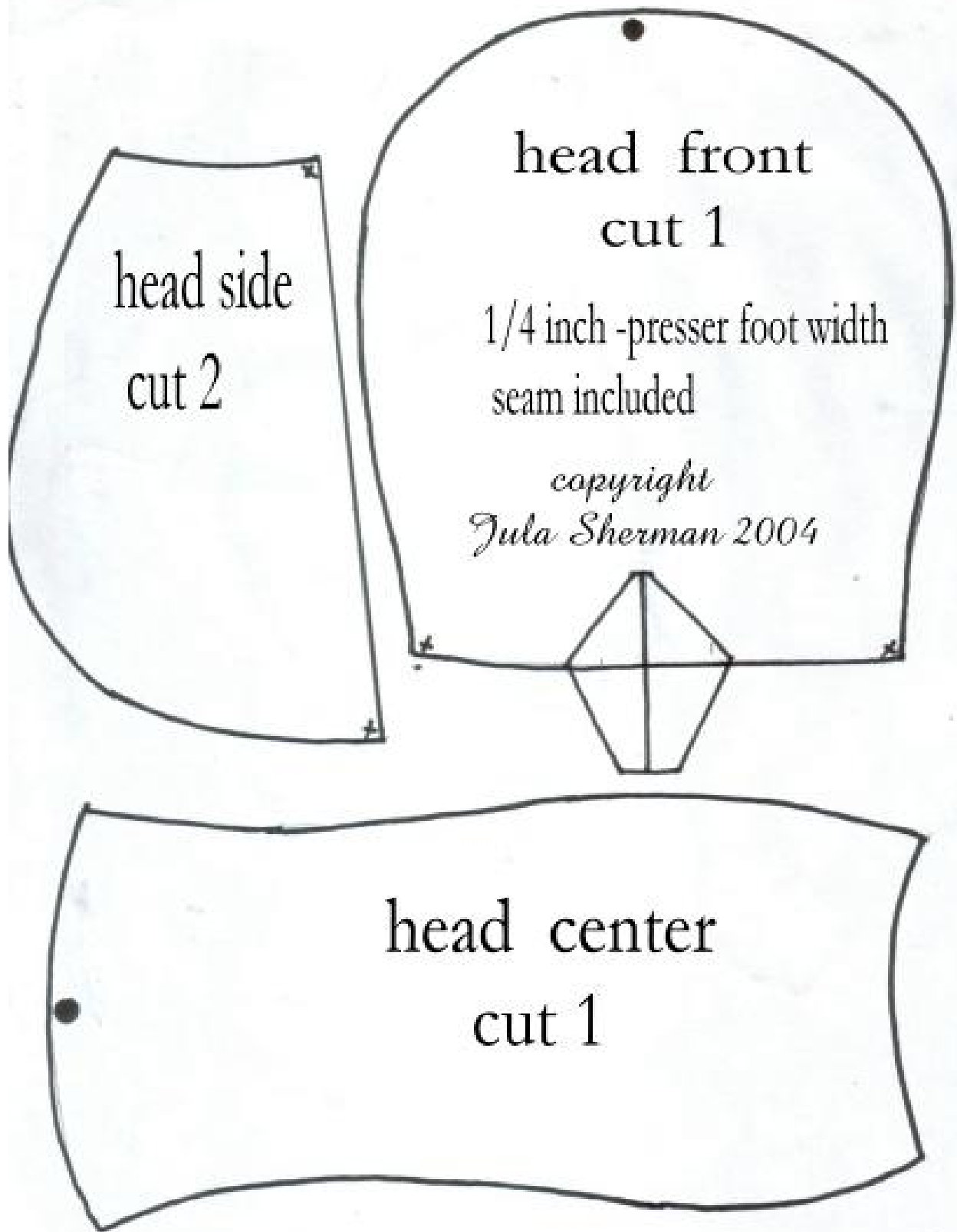
Apron.

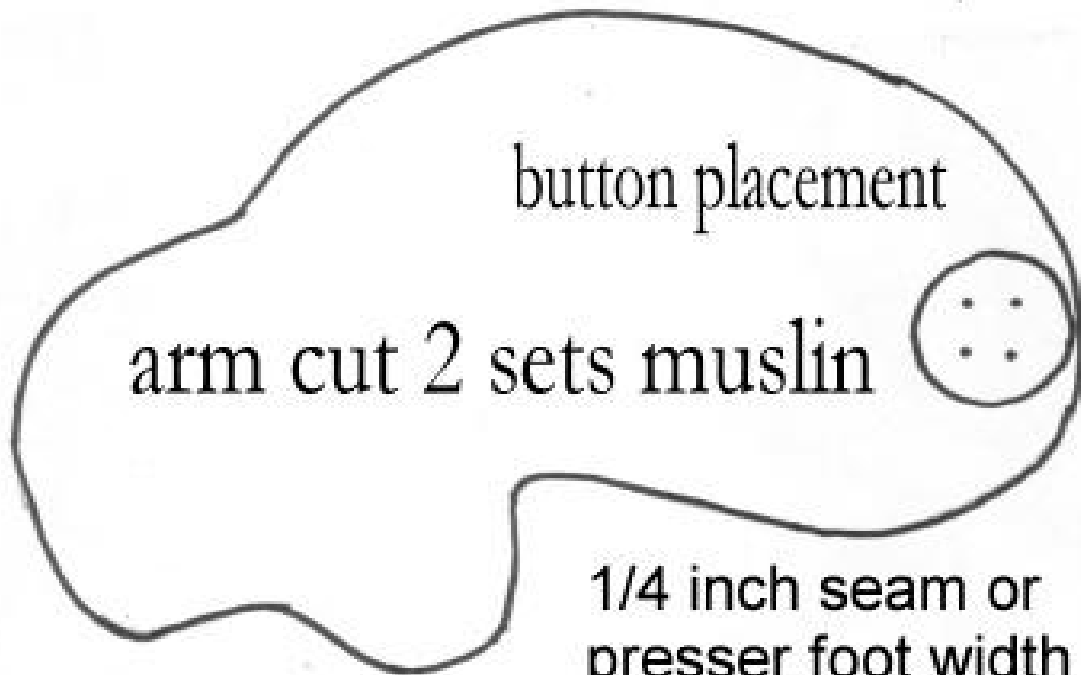
1. Cut 1 apron piece from Black fabric.
2. Make roll hem at arm holes
3. Make roll hem at bottom of apron.
4. Sew shoulders across, fold down and top stitch.
5. Make roll hem at neck.
6. Secure neck with some sort of favorite closure.

**Bonnet:**

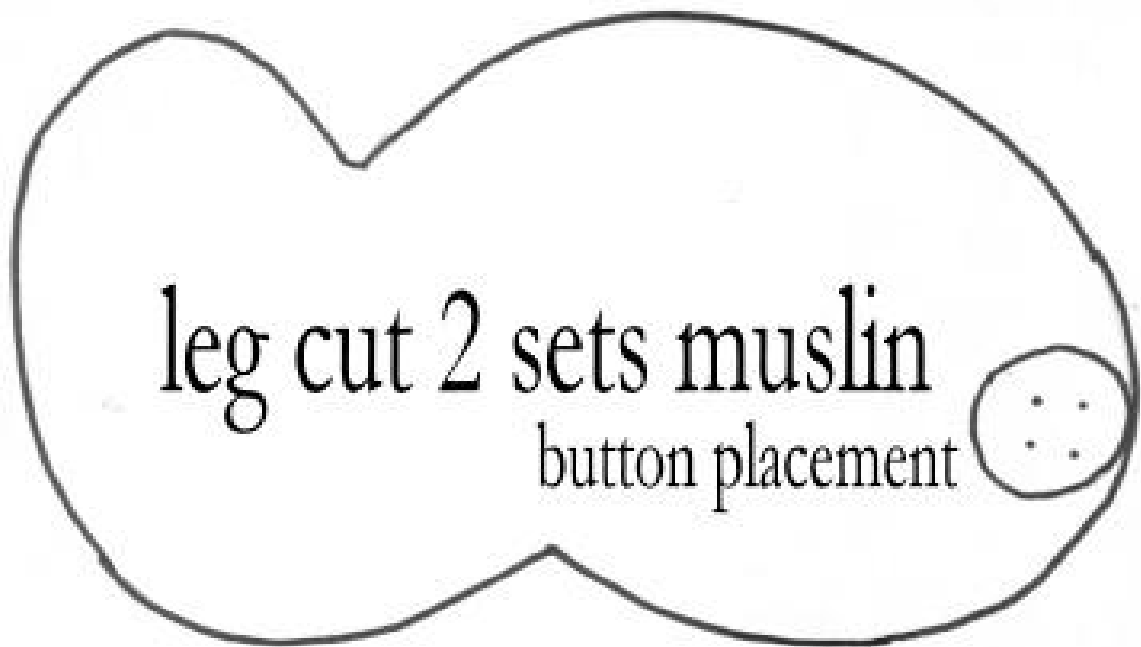
1. Cut two backs.
2. Cut 2 pieces black fabric 12 inches long X 6" wide.
3. Cut 1 matching piece of board or buckram.
4. Sew all three 12"X 6" strips together. Clip curves and turn right side out.
5. Sew bonnet backs leaving straight bottom open for turning.
6. Clip curves and turn right side out.
7. From mid way on bonnet back to the other side about midway either pleat or gather to fit into the bonnet stiff brim.
8. Sew in place.
9. Cut two long pieces 12" long by 3 inches wide. Make bonnet ties. Sew long edge and one short end. Clip corners. Turn right side out. And hand stitch other end closed. Press and stitch into place on bonnet.







1/4 inch seam or  
presser foot width  
included



*copyright*  
*Julia Sherman 2004*

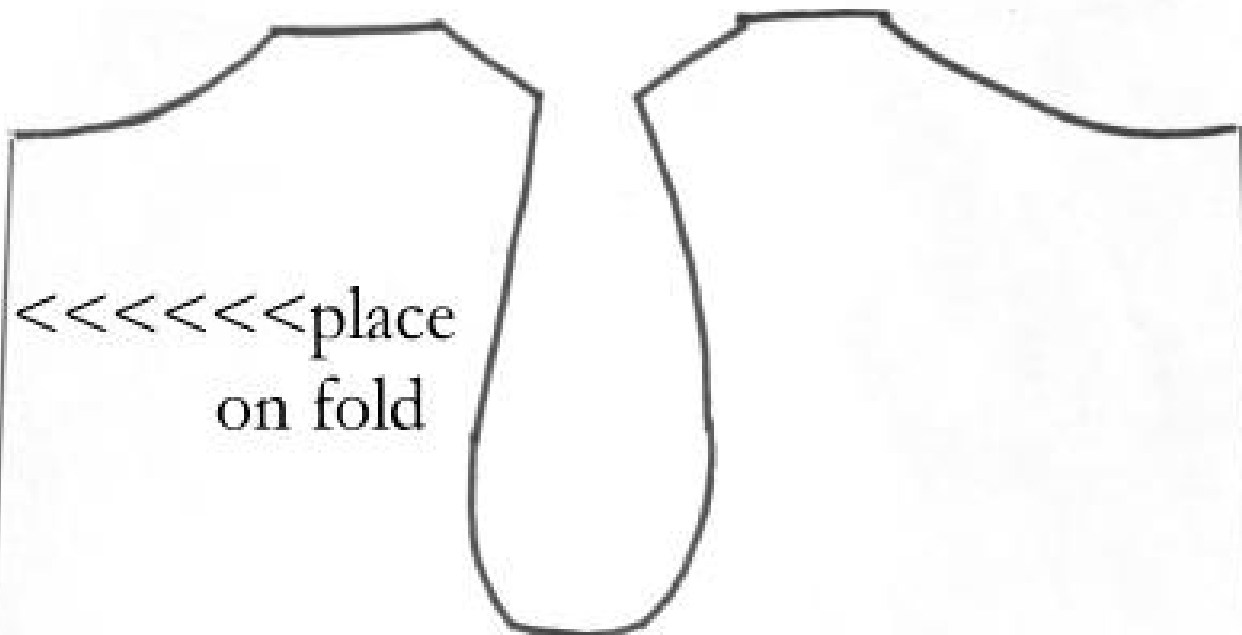
doll body

cut 2

1/4 inch- presser foot width  
seam allowance included

*copyright*

*Julia Sherman 2004*

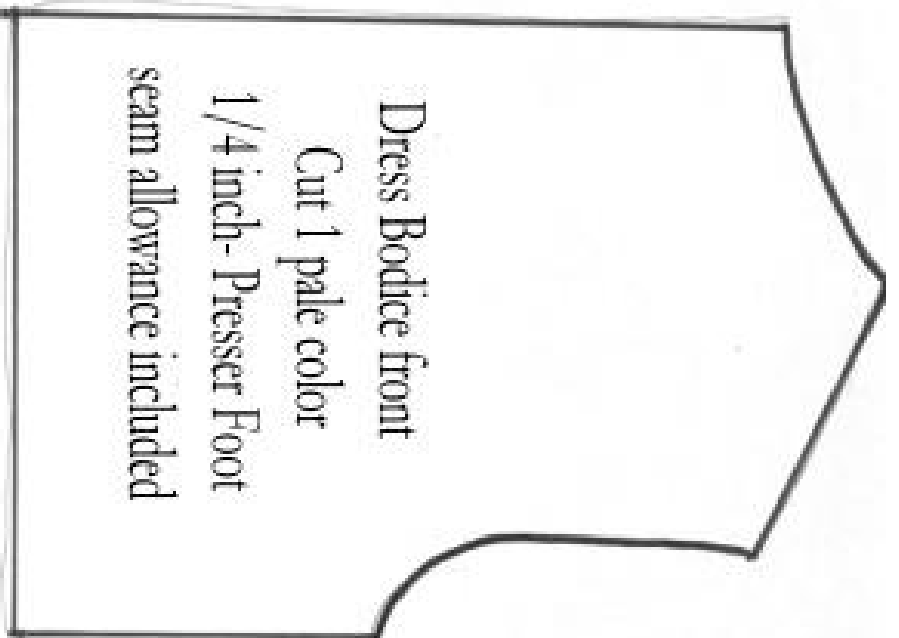


<<<<< place  
on fold

Apron  
cut 1 on fold  
presser foot  
width included

<<<<< place this line on fold

*copyright*  
*Julia Sherman 2004*



*copyright*

*Julia Sherman 2004*

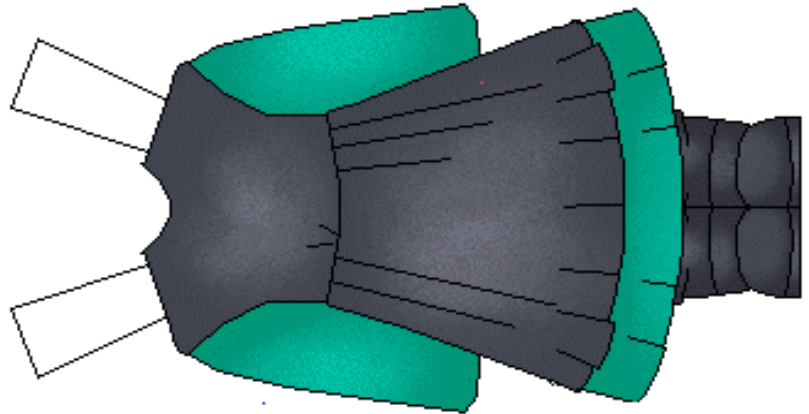
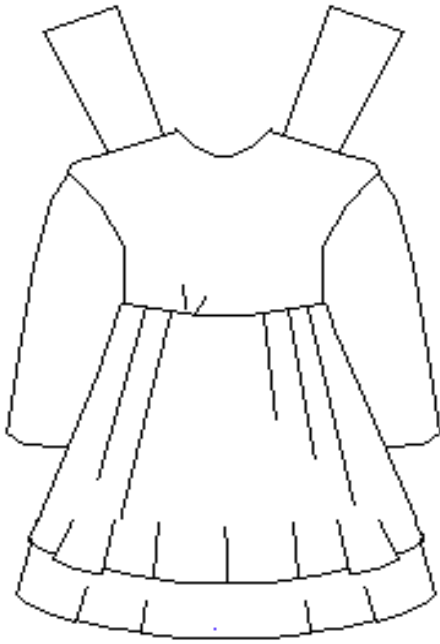
---

Dress Sleeve  
Cut 2 Pale color  
1/4 inch- Presser Foot width  
seam allowance included

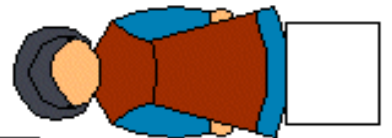
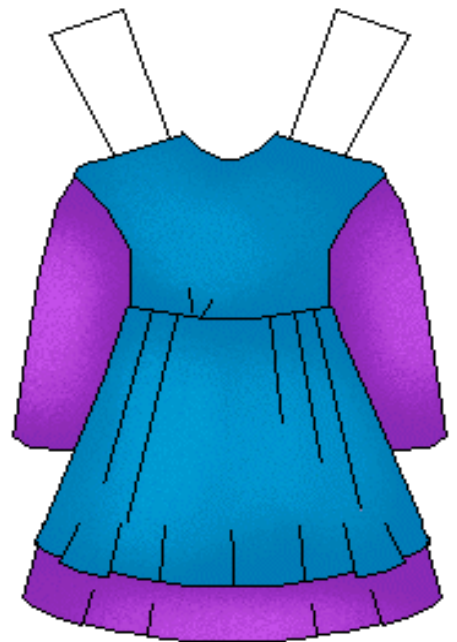
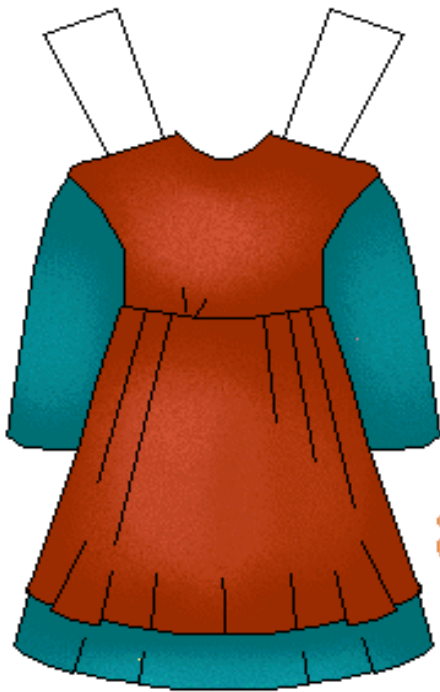
*copyright*  
*Julia Sherman 2004*



# Amish



VISIT [BILLYBEAR4KIDS.COM](http://BILLYBEAR4KIDS.COM) FOR MORE FAMILY FUN!





**CLASSES, FREE PATTERNS, CLASSIFIEDS, MAGAZINES  
BOOKS, DESIGNERS AND MORE.....  
WWW.CLOTHDOLLCONNECTION.COM  
KAREN SAMUELSON OWNER**



**Circle  
Modern  
Dance**

**Email  
circle\_modern\_dance@hotmail.com**

**Circle Modern Dance  
P.O. Box 1881  
Knoxville, TN 37901  
865/524-7615**

**DYLON**  
Simply the best fabric dyes in the world!  
Offering rich, vibrant colors that  
are permanent and colorfast!  
<http://www.dritz.com/brands/dylon/>  
**Join Our Club!**

**Fairfield**



Soft Touch Poly-fil  
Supreme®  
100% polyester,  
non-allergenic,  
washable  
Siliconized fibers  
create a silky  
texture and  
down-like comfort  
Available in one  
package size or one  
bulk carton size

**Toll free: 800-980-8000  
Consumer Info : consumer@poly-fil.com**



**IRON ON  
FACES.  
SHOES. WIGS.  
PRE-DONE  
BODIES..  
EVERYTHING  
YOU NEED  
TO MAKE A  
SOFT DOLL  
OF YOUR  
OWN**

**ONE & ONLY  
creations®** [www.oneandonlycreations.com](http://www.oneandonlycreations.com)

# Doll Shows and Events and Contests

## MINNESOTA

**Sunday May 16, 2004 10 AM to 4PM ..... AND ..... Sunday, September 19, 2004 10 AM to 4 PM**

**Description:** The Prom Center is a bright large room with 70 plus dealers on one floor. Our dealers bring in the best of the Antique to Modern Dolls, Bears and other related items to show and sell. Many doll and bear artists bring their one of a kind creations also. You will also find doll making supplies, stands, books, & of course that special something you have always been looking for. So bring a friend!

**Address:** 484 Inwood Ave  
St Paul (Oakdale), MN 55128

**Directions:** The Prom Center is handicap accessible and is conveniently located just East of the I-694 - I-494 & I-94 exchange. Drive East on I-94 to first exit (Inwood & Radio Dr). Go left at light about 3 blocks. Prom Center is on the left. There is plenty of free parking.

**Admission:** \$4.50 Adults, Children Under 12 \$1.50

**Promoter:** C Promotions Plus

**Email:** [car4ann@usfamily.net](mailto:car4ann@usfamily.net)

**Phone:** 763-434-9023

---

<http://www.clothdollconnection.com/EventsandList.html>

---

**KC Gift Mart''** Overland Park International Trade Center  
6800 W. 115th St., Overland Park, KS  
<http://www.kcdollfair.com/index2.htm>

---

“Springtime in the Valley” Quilt and Cloth Doll Show in Clovis, California  
<http://www.dollemmas.com/Show%20Info.htm>

---

Hoffman Challenge  
[http://www.hoffmanchallenge.com/2004%20Challenge/2004\\_Challenge.htm](http://www.hoffmanchallenge.com/2004%20Challenge/2004_Challenge.htm)

---

Sulky challenge  
[www.sulky.com](http://www.sulky.com)  
Poly-fil  
<http://poly-fil.com/crafts/contests.asp>

---

### All Dolled Up Contest!

At the 2004 American Sewing Guild Conference  
<http://www.wvisions.com/craftbb/plasticdoll/11469.html>

*Prize:*

*Merit trophies and each first place winner will be spotlighted on the ASG costumer's web site.*

---

Cash For Crafts contest by HIA  
<http://www.i-craft.com/contest.html>

---

<http://sewing.patternreview.com/cgi-bin/ContestRules.pl?ContestID=14>

---

**FEBRUARY.. A TIME OF LOVE  
AND A  
TIME OF SEEING RED.**

Chinese Opera Hand Puppet

Amish Armful Doll

Princess Reprint!

Red Lion Dancer Rag Doll

