

# Student Body

President-John Lowe  
 Vice President-Linda Worth  
 Secretary-Barbara Bergman  
 Treasurer-Jamie Bledsoe  
 As. Treasurer-Laura Graham

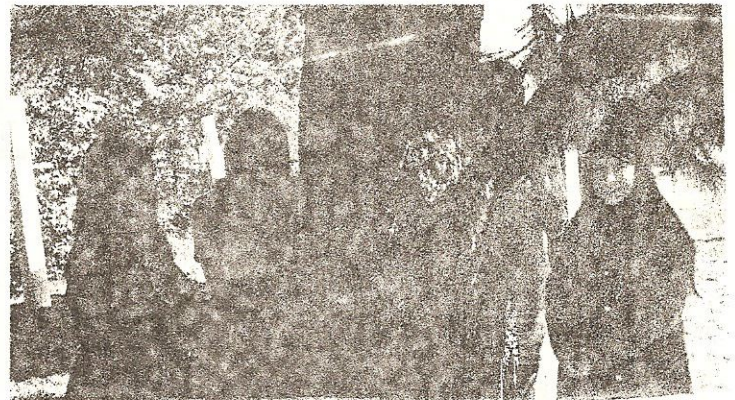


President-Clay Musgrove  
 Vice President-Rick Cody  
 Sec.-Treas.-Melinda Ellis

## SENIORS

President-Melissa Sramek  
 Vice President-Peggy Griffiths  
 Secretary-Rozanne Keller  
 Treasurer-Sussie Chase

## JUNIORS!



President-Danny Coffman  
 Vice President-Cindy Clark  
 Sec.-Treas.-Marianne Carter

## SOPHOMORES

\* \* \*

President-Jerry Rea  
 Vice President-Lloyd Clark  
 Sec.-Treas.-Lyn Bonser

## "frosh"

