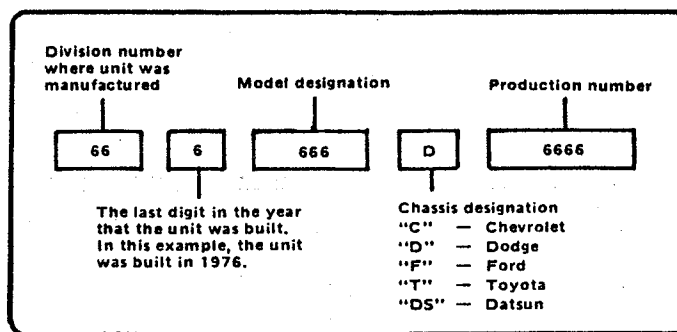


# INTRODUCTION

This section lists all Champion Motor Home Service Centers, Manufacturers of Component Parts, briefly explains Champion's Warranty and Registration Program, and describes your Champion Serial Number.

## CHAMPION SERIAL NUMBER

The serial number is located on the certification label which may be found on the wall next to the driver's seat (full-size motor homes) or near the door frame on mini-motor homes. The same information may also be found on your copy of Champion's warranty form. When you contact your dealer for service, be sure to give him the information listed on the certification plate (see example below).




CERTIFICATION PLATE

For more detailed information regarding Champion's limited warranty, General Warranty Claim Procedure and Chassis Warranty Service, please consult your Motor Home Owner's Guide which came with your vehicle.

## OWNER'S WARRANTY REGISTRATION CARD


A few weeks after you purchased your new Champion recreation vehicle, you received a plastic card in the mail, containing vital information regarding your R.V.

This Owner's Registration Card is your "ticket" to fast professional service on your R.V. whether you're in your own home town, or traveling anywhere in the United States. It should be kept on your person or in your R.V. whenever you drive or travel.

	<b>CHAMPION</b>	<b>OWNER REGISTRATION CARD</b>
<b>SERIAL NUMBER</b>		<b>PURCHASE DATE</b>
<b>OWNER</b>		
<b>ODOMETER</b>		

If service should be required under the terms of Champion's Warranty, take your R.V. to your dealer and make arrangements for service. Take your Owner's Registration Card so that your dealer can complete service forms for his records.

If you're traveling and need service, you'll find a number on the back of your card—dial it, and the operator will give you the name of the nearest dealer(s).

<b>OWNER'S SIGNATURE</b>	
	
<b>CHAMPION</b>	
To locate your nearest motor home dealer, call the following number: 219-522-7385 and tell the operator the city, state and zip code of where you are. The operator will give you the name, location and phone number of the dealer(s) closest to you.	

Once again, the dealer who services your R.V. will need your card to complete necessary service forms.

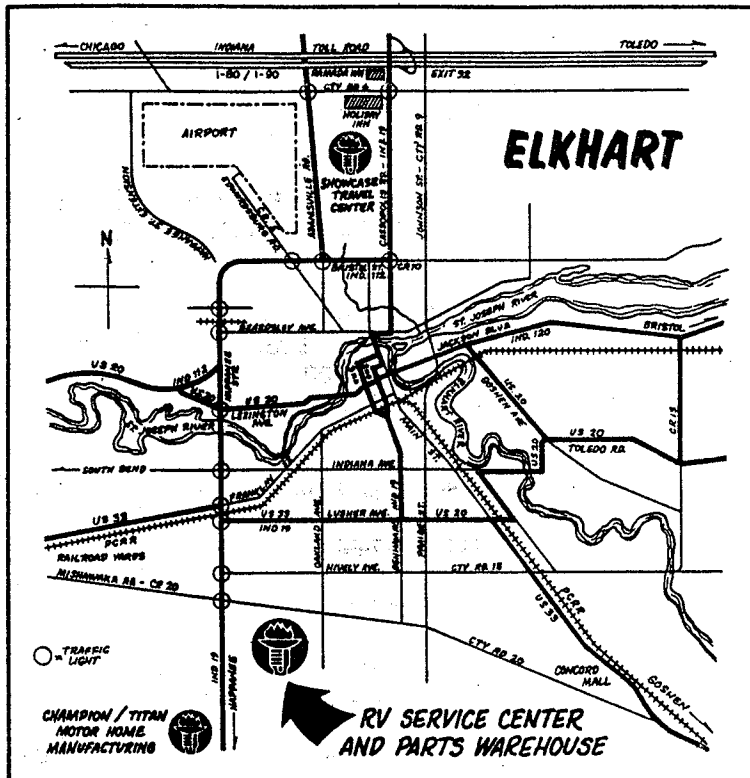
## RECREATIONAL VEHICLE SERVICE CENTERS

### R.V. — MOTOR HOME SERVICE CENTERS

Service for your recreation vehicle is also available at two Service Centers operated by Champion Home Builders Co.

**GEORGIA**, Ellaville, 31806  
Champion R.V. Service Center &  
Outlet Store  
P.O. Box 351  
Industrial Drive  
(912) 937-5555

**INDIANA**, Elkhart 46515  
Champion Motor Homes Division  
P.O. Box 1287  
2103 W. Mishawaka Road  
(219) 522-7385



## RV SERVICE

- ★ WARRANTY REPAIR SERVICE
- ★ INSURANCE REPAIR SERVICE
- ★ FREE ESTIMATES
- ★ CUSTOM REPAIRS AND PAINTING

## RV PARTS WAREHOUSE

- ★ NATIONAL RV PARTS WAREHOUSE FOR CHAMPION
- ★ PARTS AND ACCESSORIES STORE

Extended  
**WARRANTY**  
Service  
Plan



2103 W. Mishawaka Road  
P.O. Box 1287  
Elkhart, Indiana 46515  
(219) 522-7385

## COMPONENT PARTS AND SERVICE

### AUTOMATIC ELECTRIC STEP

Kwikee Company  
P.O. Box 638  
Drain, Oregon 97435  
(503) 836-2126

### AUTOMOTIVE HEATER & AIR CONDITIONING

AMC - Air Conditioning Company  
P.O. Box 40557  
Fort Worth, TX 76140  
(817) 293-5315

Evans Products Company  
701 Ann Street  
Grand Rapids, MI 49504  
(616) 361-2682

Mark IV  
3800 Commerce Street  
Dallas, TX 75226  
(214) 821-5161  
800-527-2119

Motive Air Manufacturing  
3645 10th Avenue, North  
Birmingham, AL 35234  
(205) 595-8059

### AXLE, TRAVEL TRAILERS

Fayette Division  
P.O. Box 339  
Fayette, Ohio 43521  
(419) 237-2511

### BATTERIES

ESB Corporation  
17700 Northland Park Ct  
Southfield, MI 48075  
(313) 569-4007

Sears, Die-Hard

### CONVERTERS/BATTERY CHARGER MONITOR PANEL

Progressive Dynamics  
P.O. Box 168  
Marshall, MI 49068  
(616) 781-4241

Triad-Utrad  
Todd Engineering  
28706 Holiday Place  
Elkhart, IN 46514  
(219) 293-8633

### CRUISE CONTROL

Travel Accessories  
P.O. Box 294  
Three Rivers, MI 49093  
(616) 279-7470

### DEMAND WATER PUMP/FURNACE/ RANGE/ROOF AIR (12 VOLT)

ShurFlo  
1400 Cerritos Avenue East  
Anaheim, CA 92805  
(714) 533-7700  
(800) 854-3218

Coleman Company  
3050 N. St. Francis Street  
Wichita, KS 67219  
(316) 832-6435

Coleman Company  
2200 E. Lusher  
Elkhart, IN 46514  
(219) 293-2211

Duo Therm Corporation  
509 Poplar  
La Grange, IN  
(219) 674-9951

**COMPONENT PARTS AND SERVICE - continued**

**FURNACE**

Hydro-Flame  
1874 S. Pioneer Road  
Salt Lake City, UT 84104  
(801) 972-4621

Suburban Mfg. Co.  
P.O. Box 399  
Dayton, TN 37321  
(615) 775-2131

**GAS DETECTOR**

Rosan Enterprises  
2901 W. Coast Hwy  
Newport Beach, CA 92663  
(714) 548-5533

**GENERATOR**

Generac  
P.O. Box 8  
Waukesha, WI 53186  
(414) 968-3101

Koehler Co.  
Koehler, WI 53044  
(414) 457-4441

Onan  
1400 73rd Ave, N.E.  
Minneapolis, MN 55432  
(612) 574-5000

**ISOLATOR**

Shurtron  
Todd Engineering  
28706 Holiday Pl  
Elkhart, IN 46514  
(219) 293-8633

ShurFlo  
1400 Cerritos Ave  
Anaheim, CA 92805  
(714) 533-7700

**RADIOS**

Clarion Corp  
5500 Rosecrans  
Lawndale, CA 90260  
(213) 973-1100

Craig Corp  
921 W. Artesia Blvd  
Compton, CA 90220  
(800) 331-1000

Motorola, Inc  
1299 E. Algonquin Road  
Schaumburg, IL 60196  
(312) 576-3316

**REFRIGERATOR**

American Formed Plastics Corp (AMFRIG)  
23892 Cooper Drive  
Elkhart, IN 46514  
(219) 262-2521

Dometic Sales  
P.O. Box 490  
Elkhart, IN 46515  
(219) 294-2511

Instamatic Corp  
P.O. Box 456  
Elkhart, IN 46515  
(219) 293-4591

Norcold  
1620 W. Bristol  
Elkhart, IN 46514  
(219) 264-9628

**ROOF AIR**

Coleman Company  
3050 N. St. Francis Street  
Wichita, KS 67219  
(316) 832-6435

Suburban Mfg. Co.  
P.O. Box 399  
Dayton, TN 37321  
(615) 775-2131

**COMPONENT PARTS AND SERVICE - continued**

**SAFETY ALARM (Safe-line)**

Omnifac Corp.  
1700 E. Whipp Road  
Dayton, OH 45440  
(513) 434-8400

**STOVE**

Elixir Industries  
2040 Industrial Pkwy  
Elkhart, IN 46516  
(219) 294-1651

Elixir Industries  
18025 S. Broadway  
Gardena, CA 90248  
(800) 421-1942

**TANK, FUEL**

Travel Accessories  
P.O. Box 294  
Three Rivers, MI 49093  
(616) 279-7470

**TANK, L.P.**

Manchester  
2738 Lithonia Ind. Pk.  
Lithonia, GA 30058  
(404) 482-8728

Manchester  
2880 Norton Ave  
Lynwood, CA 90262  
(213) 979-4188

**TANK, HOLDING & WATER**

Rotec, Inc.  
218 W. McKinley Ave  
Mishawaka, IN 46544  
(219) 256-1516

Rotec, Inc.  
235 E. Main Street  
Ontario, CA 91761  
(714) 986-5855

**TIRES**

Goodyear Tire & Rubber Company  
6500 Mt. Elliott Ave  
Detroit, MI 61821  
(313) 925-7200

Michelin Tire Corp  
1 Marcus Ave  
Lake Success, NY 11042  
(516) 488-3500

**TOILETS**

Thetford Engineering  
55712 Co. Rd. 15, S.  
Elkhart, IN 46514  
(219) 294-3671

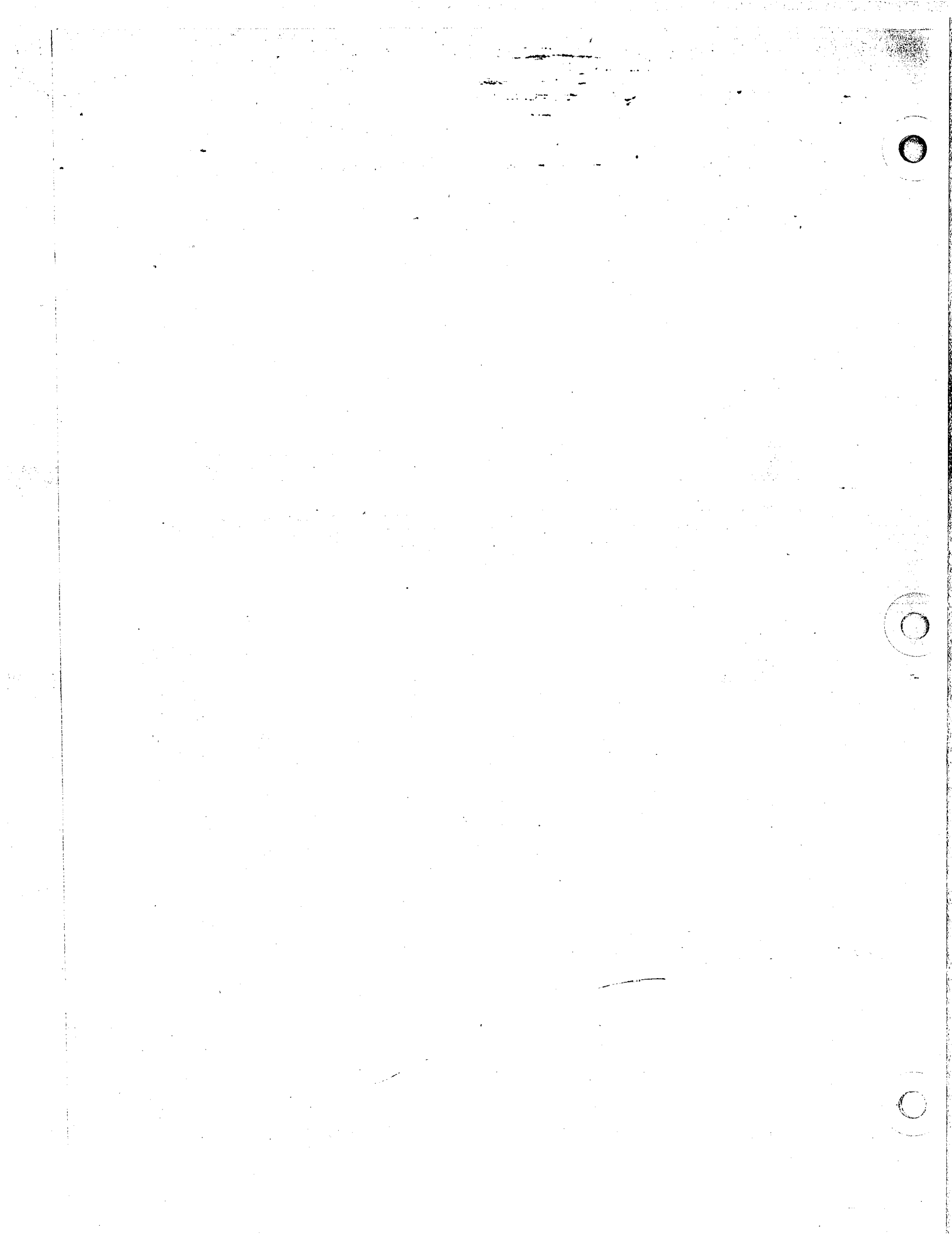
**WATER HEATER**

Atwood Bowen  
4750 Hiawatha Drive  
Rockford, IL 61101  
(815) 877-7461

This Motor Home Service Manual has been designed to assist owners, service centers and dealers of Champion Home Builders Company in the repair and service of the company's various models of recreational vehicles.

These models include Champion, Titan, Flagship, Trans-Van, TranStar, Champion & Titan Minis, Galavan, Grand Slam, Handi-Van and Bantam motor homes and Concord travel trailers.

In order to improve its recreational vehicles, Champion Home Builders Company is continually engineering new designs and developments. For this reason, some difference may exist between a particular recreational vehicle and this manual.





<b>SECTION 2 – BODY EXTERIOR</b>	<b>PAGE NO.</b>
Body Metal Repair – Steel Cage Structure .....	2-1
Bumpers .....	2-20
Bumper Covers .....	2-20
City Water Fill .....	2-29
Collar – Trans-Van .....	2-25
Doors .....	2-6
Entrance and Cargo Doors .....	2-7
Entrance Door Step (Retractable) .....	2-22
Fender .....	2-25
Fiberglass Grill Removal and Replacement .....	2-22
Fiberglass Rear End .....	2-26
Fiberglass Repairs .....	2-26
Fresh Water Fill .....	2-29
Furnace Vent (Hydro-Flame) .....	2-19
Furnace Vent (Duo-Therm) .....	2-19
Gasoline Fills .....	2-29
Grill, Removal and Replacement .....	2-22
J-Rail .....	2-23
Locks and Latches (Access and Compartment Doors) .....	2-7
Locks - Entrance Doors .....	2-29
Moldings – Corner, Roof and Side .....	2-23
Moldings – Wheel Well .....	2-23
Overlay Procedure .....	2-1
Refrigerator Vent .....	2-16
Refrigerator Vent (Side Mounted) .....	2-19
Roof Metal Repair .....	2-26
Roof Patching .....	2-28
Roof Replacement .....	2-27
Roof Sweeps – Steel Structure .....	2-26
Roof Vent Crank Assembly .....	2-18
Soil Pipe Vent Cap .....	2-18
Spare Tire Mount .....	2-20
Standard Roof Vent Escape Hatch, Luma Dome .....	2-16
Sun Roof .....	2-13
Windows – Miscellaneous – Bunk, Bubble, Door, Porthole, Etc. ....	2-7
Windows – Inside and Outside Fastening .....	2-7
Windows – Side and Rear .....	2-7
Windows – Side (Hehr Windows) .....	2-13
Windshields .....	2-16

<b>SECTION 3 – BODY INTERIOR (HARD)</b>	<b>3-1</b>
Arm Rest (Bucket Seat) .....	3-6
Bunk – Pull Down Counterbalance .....	3-11
Bunk – Side Angle Bracket .....	3-9
Bucket Seat (High Back) .....	3-4
Cabinet – Bunk .....	3-9

# CHAMPION MOTOR HOME REPAIR AND SERVICE MANUAL

## TABLE OF CONTENTS

	PAGE NO.
<b>INTRODUCTION</b>	
Component Parts and Service .....	A-4
Serial Number .....	A-1
Service Centers .....	A-3
Warranty and Registration .....	A-1
<b>SECTION 1 – CHASSIS</b>	
Battery and Battery Installations .....	1-16
Battery – Non Maintenance Free .....	1-16
Assist (Jump) Start .....	1-21
Charging Procedures .....	1-20
Electrolyte .....	1-19
Specific Gravity Test .....	1-18
Testing .....	1-19
Visual Inspection .....	1-18
Battery – Maintenance Free .....	1-22
Assist (Jump) Starting .....	1-23
Charging Procedures .....	1-23
Testing .....	1-23
Visual Inspection .....	1-22
4-Wheel Drive System .....	1-1
Engine & Power Train .....	1-9
Front Axle and Yoke .....	1-2
Fuel Tanks .....	1-1
Instrument Cluster .....	1-1
Instrument Panel .....	1-1
Maintenance – General .....	1-9
Cooling System .....	1-9
Drive Belts .....	1-9
Hoses, Rubber & Plastic Components .....	1-9
Nuts: Wheel, Spring Clip and Steering Linkage .....	1-10
Storage Recommendations .....	1-10
Wheels and Tires .....	1-10
Inflation .....	1-10
Rotation .....	1-11
Wear Patterns .....	1-11
Balance .....	1-12
8-Stud Disc Wheel .....	1-13
8-Stud Disc Wheel Tightening .....	1-14
5 and 6 Stud Disc Wheel .....	1-14
5 and 6 Stud Disc Wheel Tightening .....	1-15
Tire Removal Procedure .....	1-15

**TABLE OF CONTENTS (CONT.)**

**PAGE NO.**

Cabinet — Bunk Sliding Door .....	3-9
Cabinets — Lower .....	3-1
Cabinets — Overhead .....	3-1
Ceiling Molding .....	3-1
Ceiling Panel .....	3-1
Counter Top .....	3-9
Curtain Tracks .....	3-7
Door — Bathroom (Hinged) .....	3-8
Door — Cabinet (Overhead) .....	3-1
Door — Cabinet (Rolltop) .....	3-1
Door — Shower Fold .....	3-7
Door — Wood Fold .....	3-7
Drawer — Front Replacement .....	3-2
Drawer — Plastic Cabinet .....	3-2
Engine Cover .....	3-11
45° Seat Pedestal .....	3-6
Kitchen Backsplash .....	3-9
Pedestal .....	3-6
Room Divider Spindles .....	3-11
Seat Pedestal Slide .....	3-6
Sofa Bed .....	3-11
Table — Floor Bracket .....	3-7
Table — Fold Out .....	3-7
Table — Top (Pedestal) .....	3-7

**SECTION 4 — BODY INTERIOR 4-1**

Curtains — Windows .....	4-1
Shades — Roman .....	4-1
Venetian Blinds .....	4-1

**SECTION 5 — ELECTRICAL 5-1**

Automotive Electrical Circuits .....	5-6
Automotive Lighting Circuits .....	5-6
Breaker — Circuit .....	5-3
Breaker — Ground Fault .....	5-6
Converters .....	5-1
Dual Battery Circuits and Testing .....	5-9
Electrical Power Supply — Interior .....	5-1
Emergency Start Solenoid .....	5-9
Generator .....	5-11
Lights — Clearance .....	5-11
Lights — Entrance Door .....	5-11
Lights — Headlight (Sealed Beam) .....	5-11
Lights — Headlight Assembly .....	5-11
Lights — Parking .....	5-11

**TABLE OF CONTENTS (CONT.)**

**PAGE NO.**

Lights – Stop, Backup and Tail .....	5-11
Lights – Interior .....	5-16
Outlets – Interior .....	5-16
Power Cord .....	5-3
Short Circuit .....	5-16
Wiring Harness – Transtar .....	5-19
Wiring Harness – Trans-Van .....	5-18

**SECTION 6 – PLUMBING**

**6-1**

By-Pass Installation (Winterizing) .....	6-1
Capacity Indicator – Water and Holding Tank .....	6-4
Capacity Indicator – Control Panel .....	6-4
Demand Pump and Pressure Switch Assembly .....	6-4
Demand Pump – Plastic Tank .....	6-3
Drain Lines .....	6-3
Faucets (Sink or Wall Mount) .....	6-6
Fresh Water Tank .....	6-3
Holding Tank .....	6-9
Holding Tank Gate Dump Valve .....	6-13
Kitchen Sink .....	6-6
Lavatory Basin .....	6-6
P-Trap .....	6-9
Phone Head Shower .....	6-6
Shower Pan .....	6-6
Toilet Stool .....	6-9
Tub .....	6-6
Water Lines (Replacement Nut and Ring Kit and Flaring Method) .....	6-3
Water Supply – Demand Pump System .....	6-4
Water Tank Probe .....	6-4
Winterizing Water System .....	6-1

**SECTION 7 – FUEL SYSTEMS**

**7-1**

Copper Tubing .....	7-1
Dual-Tank Control Systems (Non-Return and Return Systems) .....	7-6
Emission Controls – Auxiliary Gas Tanks .....	7-5
Evaporation Control System .....	7-4
Flare Type Fittings .....	7-1
Fill Pipe .....	7-3
Fuel Gauge Tank Selector Switch (2-Way) .....	7-6
Fuel Level Sender Unit .....	7-6
Fuel Valves – Manual .....	7-6
Fuel Valves – Solenoid .....	7-6
Gasoline System .....	7-3
Gasoline Tank – Auxiliary .....	7-3

**TABLE OF CONTENTS (CONT.)**

**PAGE NO.**

Gasoline Tanks ..... 7-3  
L.P. Gas Regulator ..... 7-1  
L.P. Gas Regulator Adjustment ..... 7-3  
L.P. Gas Supply System ..... 7-1  
L.P. Gas Tank – Frame Mount ..... 7-1

**SECTION 8 – APPLIANCES**

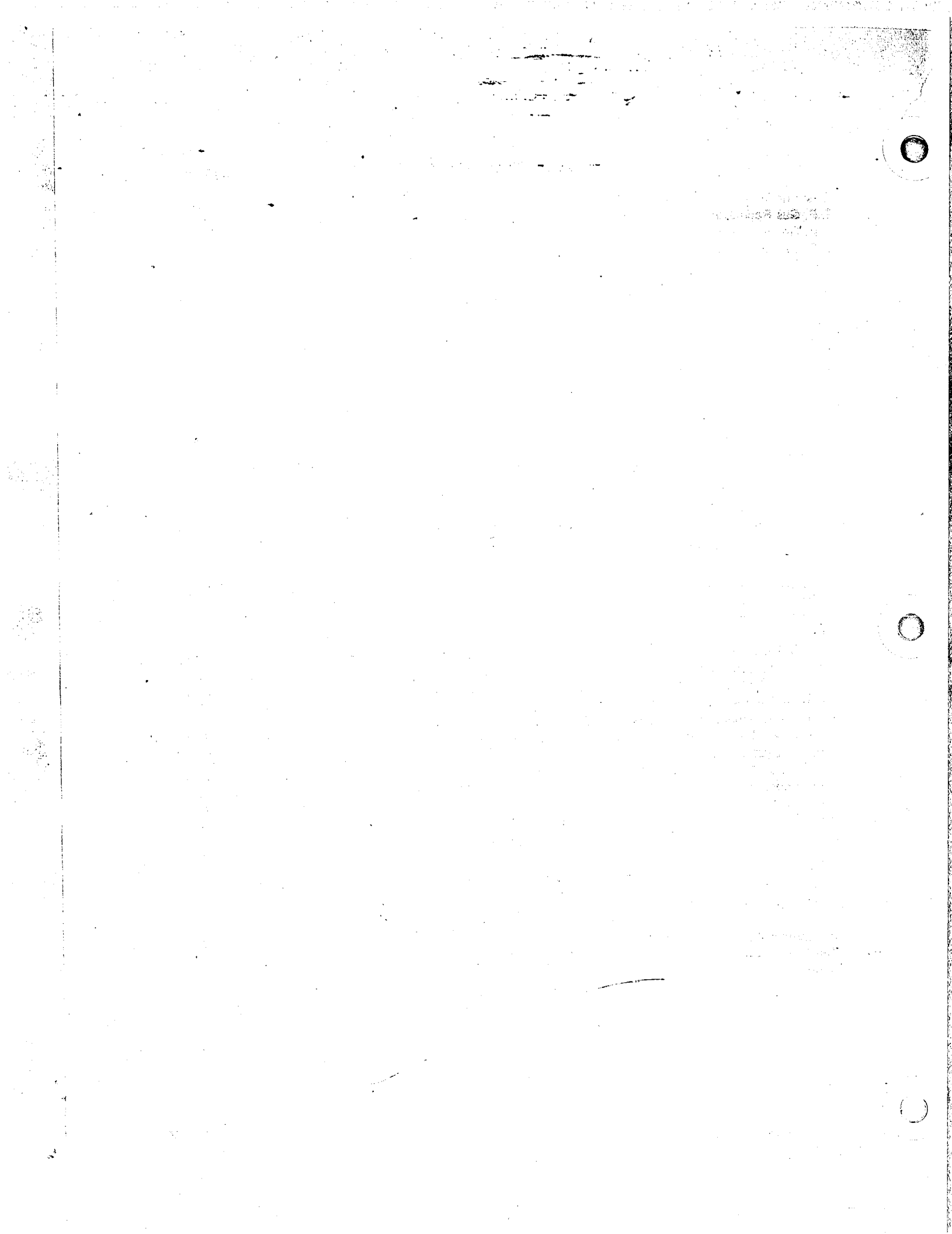
**8-1**

Air Conditioner – Duo Therm ..... 8-5  
Furnace ..... 8-1  
Oven – Micro Wave ..... 8-8  
Range – Combination, Eye Level ..... 8-8  
Range – Counter Top ..... 8-8  
Range Hood and Exhaust Fan ..... 8-8  
Refrigerator – 2-Way (110 V, 12 V) ..... 8-7  
Refrigerator – 3-Way (LPG, 12 V, 110 V) ..... 8-6  
Refrigerator – Amfridge ..... 8-6  
Water Heater – 6.5 Gallon (L.P.G.) ..... 8-1  
Water Heater – Winterizing (By-pass Installation) ..... 8-4

**SECTION 9 – ACCESSORIES**

**9-1**

Antenna – Radio ..... 9-12  
Antenna – T.V. .... 9-12  
Antenna – T.V. (Roof Rack) ..... 9-12  
Defroster Hose ..... 9-8  
Defroster Vent ..... 9-3  
Electric Door Step ..... 9-8  
Electric Door Step Testing ..... 9-8  
Heater – Automotive Hot Water ..... 9-3  
Heater – Electric and Vacuum Controls ..... 9-3  
Heater – Temperature Control Cable ..... 9-3  
Heater – Auxiliary (Hot Water) ..... 9-3  
Luggage Rack and Ladder ..... 9-12  
Monitor Systems ..... 9-14  
Radio, Stereo, 8 Track Tape Player ..... 9-11  
Stereo Speaker ..... 9-12  
Trailer Hitch ..... 9-14  
Windshield Washer ..... 9-1  
Windshield Washer Nozzle or Hose ..... 9-1  
Windshield Washer Pump – Foot Pump ..... 9-1  
Windshield Washer Pump – Electric ..... 9-1  
Windshield Wiper Blade ..... 9-1  
Windshield Wiper Motor ..... 9-1  
Windshield Wiper Pivot ..... 9-1  
Windshield Wiper Pivot Arm ..... 9-1  
Windshield Wiper Pivot Actuating Arm ..... 9-1  
Windshield Wiper Stroke and Stop Adjustment ..... 9-3



**NOTES, CAUTIONS AND WARNINGS  
CONTAINED IN THIS MANUAL**

**NOTE** designates a procedure or a special emphasis for servicing.

**CAUTION** designates possible damage to equipment if not followed properly.

**WARNING** designates possible injury or death if not followed properly.

