



**BEWARE !!
FIRE DESTROYS !!**



**DO NOT
BURN THE FORESTS**

REMEMBER !! ANY FIRE CAN SPREAD

A FOREST DEPARTMENT PRODUCTION



Pictures thanks to Mrs Storrs and Zambian Forestry Department

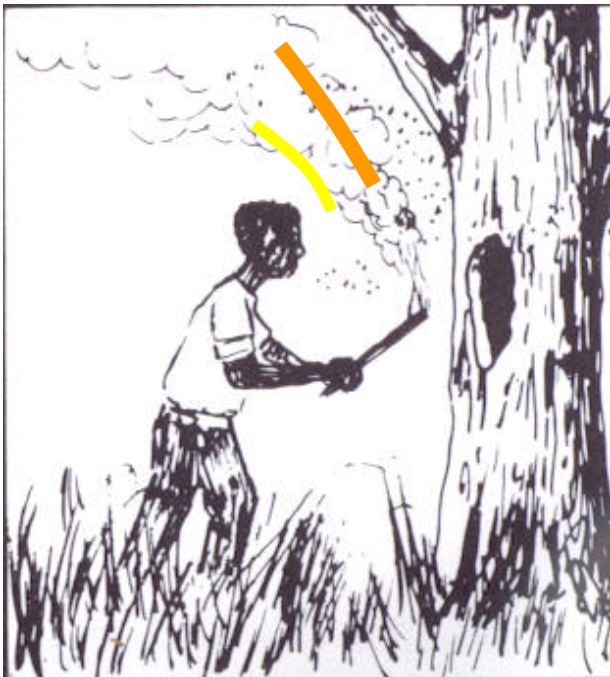
BAD FIRES CAN HAVE MANY ACCIDENTAL CAUSES...



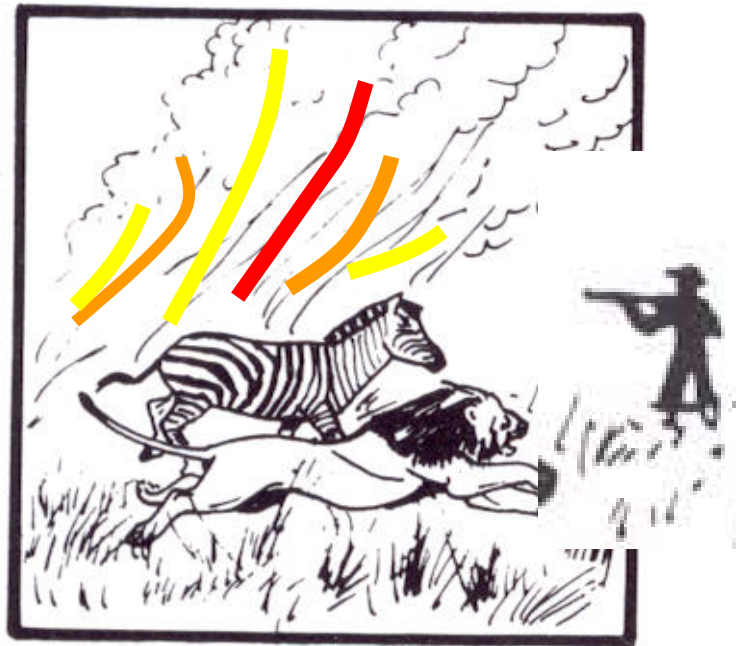
FARMERS CLEARING THEIR FIELDS



COOKING TOO CLOSE TO THE DRY GRASS

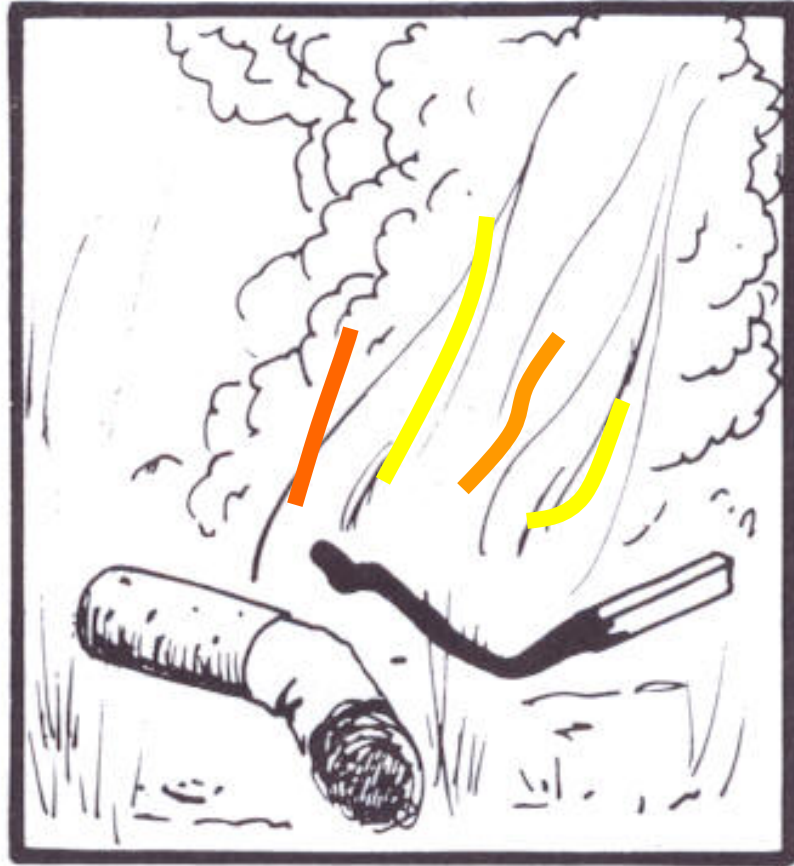


HONEY HUNTING



CHASING WILDLIFE

... A COMMON CAUSE IS
CARELESSNESS
WITH MATCHES AND CIGARETTES



CHARCOAL MAKING ALSO CAN GET OUT OF
CONTROL



EARLY BURNING IS A TOOL FOR REGENERATING FOREST PRODUCTS



*May - June - July - GREEN
= COOL*



LATE BURNING

KILLS THINGS IN THE FOREST:

- YOPHUKILA MITENGO
- SUNDE / CHUTO
- UDZU
- NYAMA
- BOWA

August -- September -- October =
DRY = HOT

