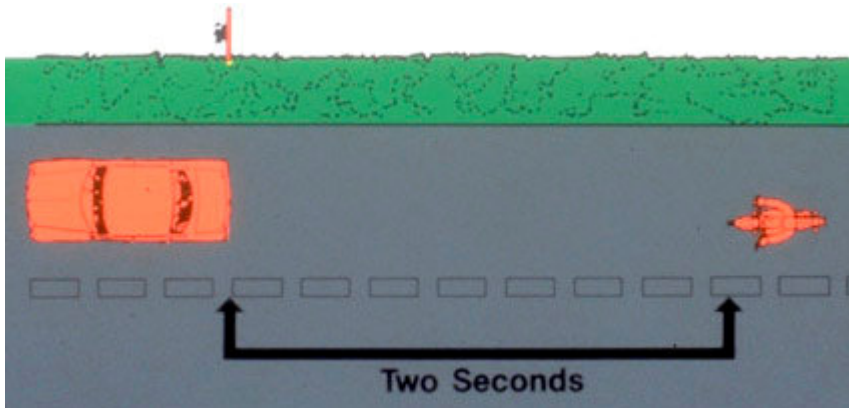
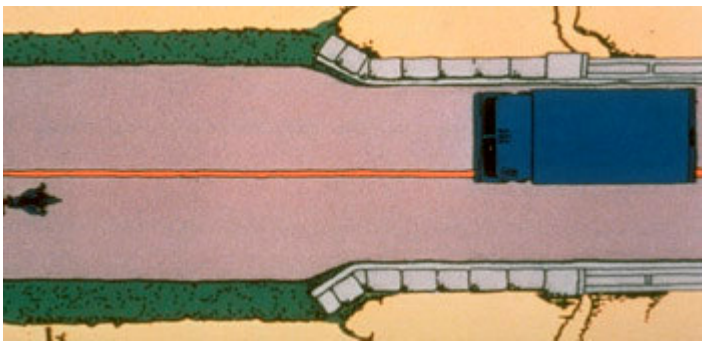


Detailed Information for Adjust Speed

- Exceeding the speed limit briefly to avoid a developing situation may be the only safe course of action, but weigh all LEGAL options first.
- Reducing speed when following another vehicle creates space and increases time to respond.



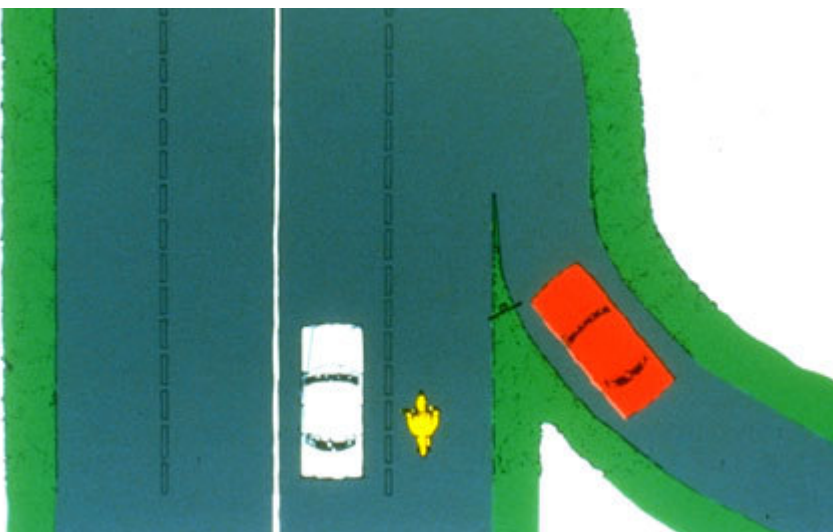
- 2-second following distance provides minimum reaction time and space at low speeds. This time should be increased with speed or deteriorated traction or visibility conditions. It allows hazards time to separate and dramatically affects stopping distance.



- Always be aware of the traffic behind when you slow.

Crash Fact: Illegal/Unsafe Speed was a contributing factor in 25.5% of single vehicle (motorcycle) crashes and 17.5% of multi-vehicle crashes involving a motorcycle in 1994. Excessive speed creates increases the rate at which hazards approach and hinders the motorcyclist's ability to analyze multiple, simultaneous hazards. Speed is also directly related to crash and injury severity.

Accelerate:



- Often helpful to get away from a bad situation, i.e. merge areas, lane changes, poor drivers, or the aforementioned 18-wheeler.

- May be helpful to downshift for greater acceleration capability.

- Adjust lane position. This is important for many reasons. For instance, often the center of the lane will have degraded traction due to the effects of accumulated oil and coolant residue. The wheel tracks of other vehicles offer the most traction. Whether you choose the left or right part of the lane depends on several variables, listed in the next section.