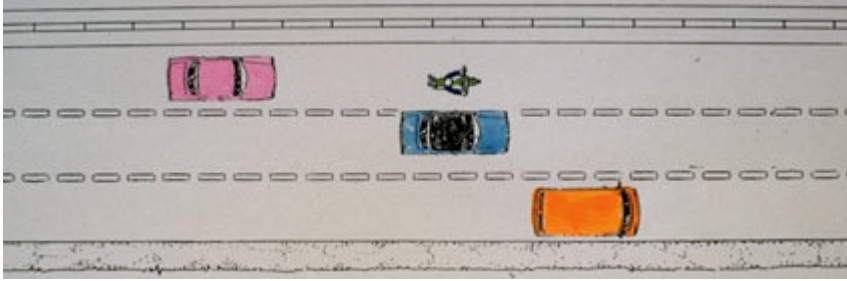
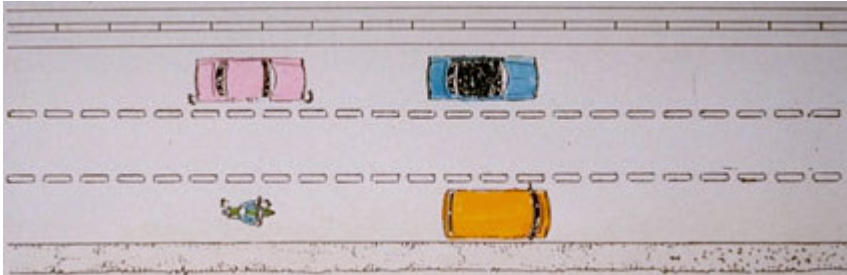


## Freeway Riding Safety Tips

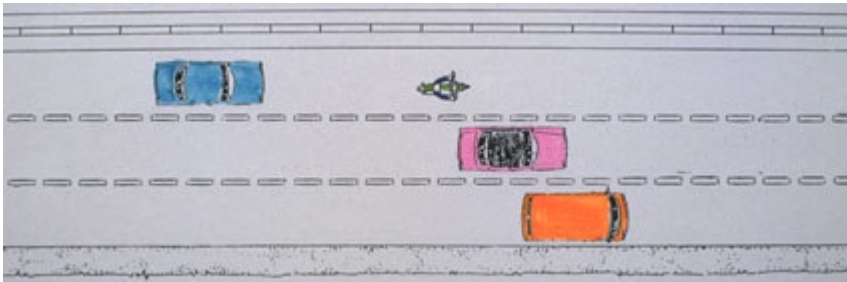
- The driver of the vehicle a motorcyclist is passing has the tendency to drift into the motorcyclist's lane (they drive where they look).



- When changing lanes, watch for vehicles also moving into the same lane.

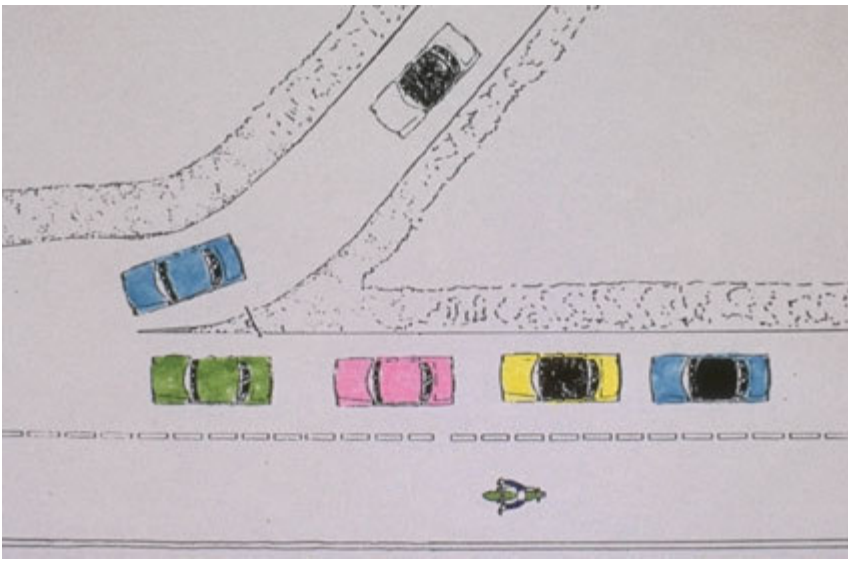


- Be aware of the motorist's blind spots. If you are following a vehicle and you can't see the driver in the vehicle's mirrors, the driver is also unable to see you. Never change lanes at a point where you will be in the driver-in-the-adjacent-lane's blind spot. And remember, just because you can see them doesn't mean that they can see you.

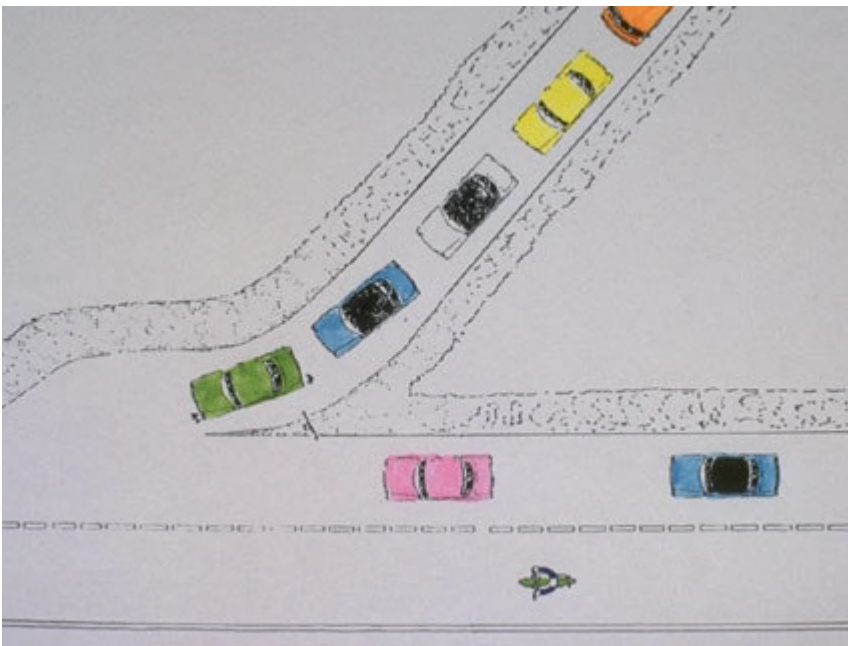


- Be especially alert near merge areas. If gaps are not present for the merging traffic, you will need to create a gap or change lanes. If the merging traffic is bumper-to-bumper prepare for the worst. Expect other drivers to make last-second dashes to the nearest exit. Ride in your motorcycle's [powerband](#) to increase your ability to accelerate.

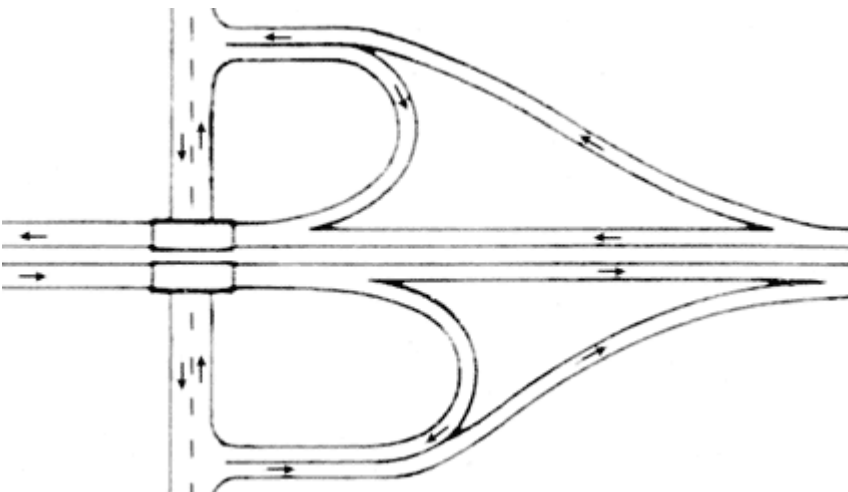
[Read about an instructor's exciting experience on the freeway.](#)



- Judge the speed of merging traffic. Merging traffic that is not approaching the speed of traffic flow will create problems.

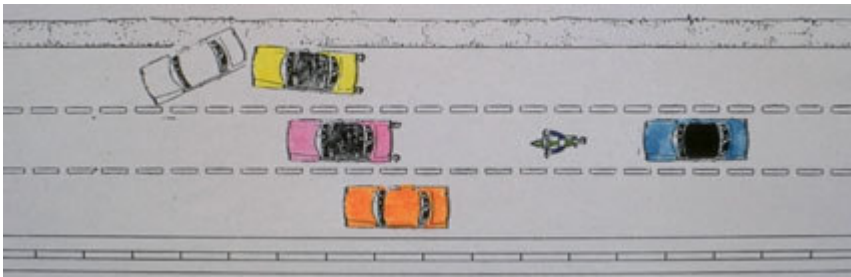


- Cloverleaf type interchanges have the potential for major conflict between vehicles merging and vehicles exiting the freeway. When entering the freeway, use great care to be certain that the driver in front of you won't decide to stop at the bottom of the entrance ramp.

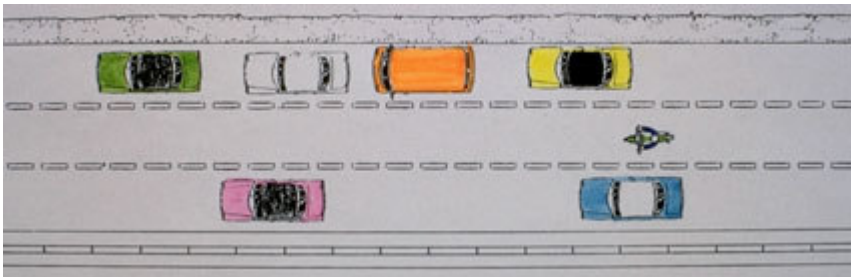




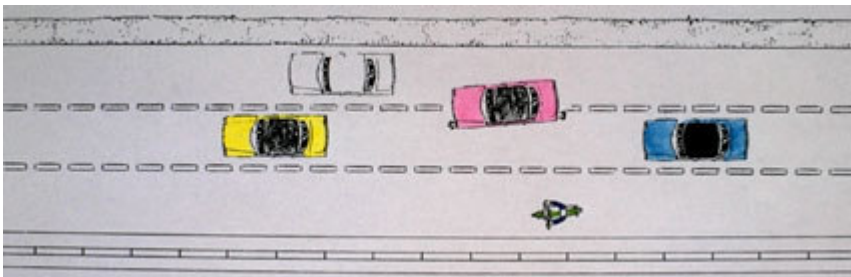
- If traffic stops, check your mirrors to determine if the vehicle behind will be able to stop. Always allow space between you and the vehicle stopped in front of you. Have an escape path planned.



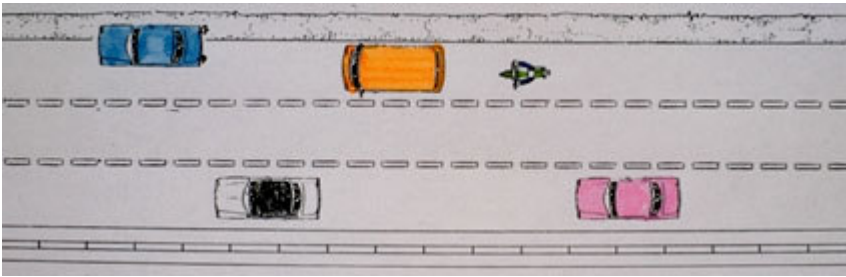
- If one lane of traffic is slowing, expect vehicles in the slow lane to make sudden lane changes into the faster moving lane.



- Anticipate vehicles making multiple lane changes instead of changing one lane at a time.



- Avoid following large vehicles too closely. Your ability to see ahead is restricted.



- On congested freeways, the shoulder is often illegally used to pass other vehicles or proceed to the exit ramp. It may be legal for buses to drive on the shoulder. In either case, one of your escape routes could be in jeopardy.
- Identify distracted or potentially distracted drivers, i.e. out of state plates, phone users, map readers, coffee drinkers, rental vehicles, etc., and move away from them.
- Look through the windshield of the vehicle in front of you to gather information ahead of you.
- Be especially alert to vehicles that are carrying materials on open flat bed boxes or trailers. Predict that the materials could fall off and make preemptive appropriate lane and speed adjustments.
- Plan an alternative route to use if/when needed. Ride within your limitations.