

EZtrender

QUICK  
START  
GUIDE



## Disclaimer

The methods described in this guide are for educational purposes only. Past results are not necessarily indicative of future results. The author and the publisher assume no responsibility for your trading results. Trading involves a high degree of risk. No recommendation is being made to trade foreign currencies, stock, commodity, option or any other financial instrument. Consult your financial advisor before starting any investment system.

Copyright © 2011 Concept Trading LLC

All rights reserved. No part of this work may be reproduced or transmitted, in any form or by any means, electronic, mechanical, photocopying, recording, or otherwise, without the prior written permission of the publisher and author.

## Congratulations on getting the EZtrender for Metatrader!



You will find the EZtrender to be a simple to use, but powerful indicator which can be used in many ways. Regardless of the strategy or system you are currently trading, the EZtrender can help make a huge impact in increasing your win percentages by using it as a confirmation tool or filter to keep you trading on the right side of momentum. Whether you are scalping, swing trading, long term position trading or counter-trend trading, allow the EZtrender to guide you to greater profits.

The EZtrender is very effective as its own system too! You'll soon see how easily it is to trade profitably with the EZtrender, but let's first verify that you have received all files.

You should have received a Zip File containing:

!eztrender-scalp.ex4

!eztrender-swing.ex4

!eztrender-scalp.tpl

!eztrender-swing.tpl

EZtrender Quick-Start Guide

**Please verify that you have received all files.**

The two .ex4 files are your indicator files and the remaining two .tpl files are your template files.

Proceed to next page for Installation Instructions



# Installation Instructions

1. If you have Metatrader running, please close the Metatrader program now.
2. Place both “.ex4” files into the Metatrader indicators folder. The correct path is:  
**"Program Files-->MetaTrader 4-->Experts-->Indicators"**
3. Place both “.tpl” files into the templates folder. The correct path is:  
**"Program Files-->MetaTrader 4-->Templates"**
4. Start Metatrader Program
5. Please test your installation by “right-clicking” on any chart, selecting “Template”, selecting any of the two EZtrender templates on the list.

Your chart should look similar to the one below with a black background, purple moving average line and the EZtrender indicator on bottom of chart.



Proceed to next page for Trade Instructions

# Trade Instructions



Whether you are a short-term scalper or longer-term swing trader, the trade instructions are exactly the same. The difference between scalping and swing trading is the EZtrender variable you'll be using along with various time frames.

You have a "Scalping" and "Swing Trading" version of the EZtrender, along with pre-built templates to get you started quickly. Both the EZtrender versions you now possess have been optimized for best "overall" trading in a variety of market conditions. The primary differences between the "Scalp" and "Swing" versions is that the Scalp version is highly sensitive to market turns whereas the Swing version will allow you to stay in a trade longer despite temporary drawdown such as when price action stair-steps with occasional reversals.

You will use the Scalp version for 1-5min charts, and you will use the Swing version for 30min and higher charts. If you are using 15min charts, a combination of both versions, depending on volatility of pair will be suitable. Please test both versions to determine your favorite. We find ourselves using the Swing version most often on 15min charts when we trade them.

For Scalping, you will use one to five (1-5min) charts depending on which you are most comfortable. Very Important: You will use the !eztrender-scalp indicator and template exclusively for scalping. Keep in mind that 1min charts will typically produce quicker trades with smaller profits and stop losses than those trades from a 5min chart. If you have an appetite for larger risk, then I definitely recommend going after the larger profits of trades based off a 5min chart versus a 1min chart.

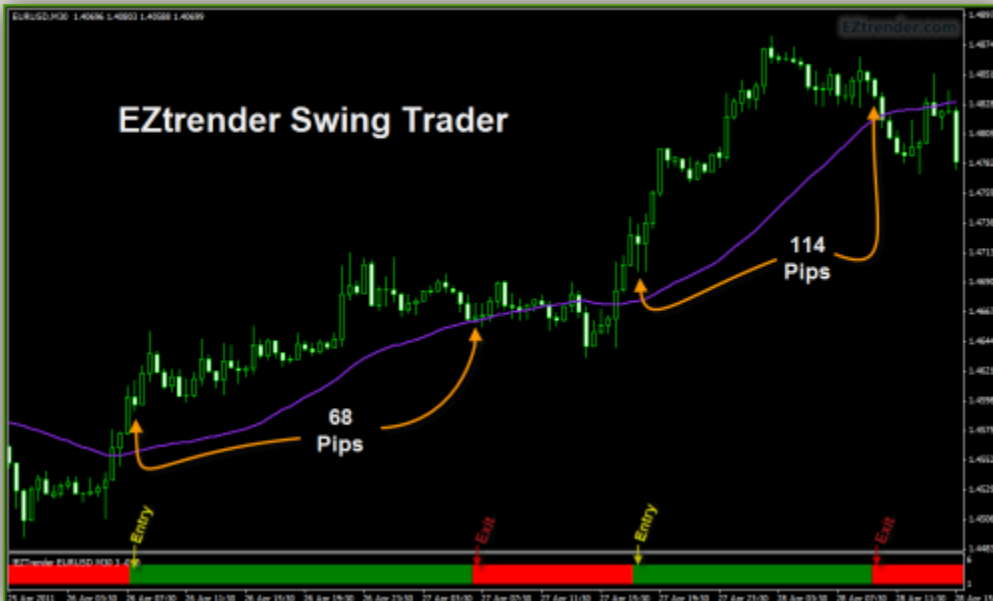
For Swing trading, you will use 30min and higher charts. It is important that you use the correct EZtrender and template file. The indicator name is !eztrender-swing.

Notice the differences between the EZtrender indicator in both the Scalping and Swing charts on the following page. See how the Scalp version is substantially more sensitive than the Swing version. These indicators used correctly will help increase your WIN percentage substantially!



This version for Scalping

Notice the difference between versions. The Scalping version is more sensitive to market movement and will allow for more trades with lessor drawdown.



This version for Swing Trading

# Important Rules for Trading the EZtrender

- Step 1: We Only Trade Trending Markets!
- Step 2: We Only Trade Trending Markets!
- Step 3: We Only Trade Trending Markets!

**I CAN NOT STRESS THIS ENOUGH!**

**DO NOT ATTEMPT TO CAPTURE TRENDING PROFITS IN A FLAT MARKET**

**YOUR EFFORTS WILL BE FUTILE!**

We identify trending markets very simply! We monitor the 16 primary trading pairs and choose the ones that have the greatest incline or decline of the purple moving average. Each day, at the beginning of the trading session, we look at our 16 pairs as shown below:



Today is a good trending day and we have several choices of trending markets. Let's take a closer look at each one individually:

Keep in mind that some days will all be FLAT with no rising or declining markets. It is these days that you must avoid trading and wait for the next trending day.

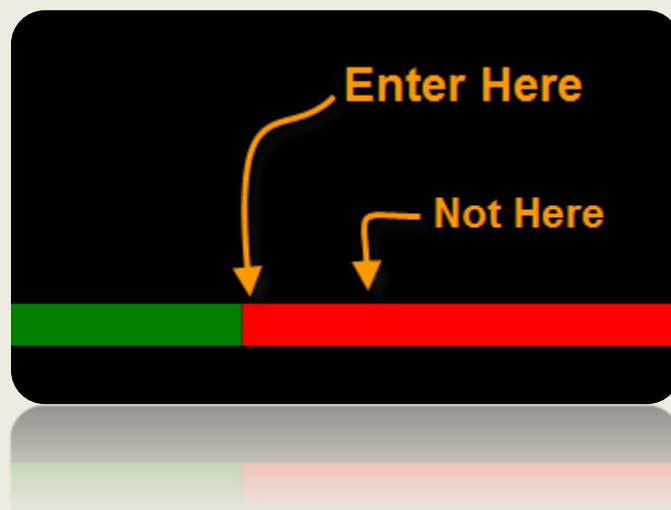


The best charts are those in a long term trend such as #1, 5, 6, 7, 8, and 11. Understand that trend direction is determined by which side price is on in relation to the 34 SMA (purple line). If price is above, the trend is up. If price is below, the trend is down. Be cautious of those that have had recent trend direction changes such as #2, 3, 4, and 12. Absolutely stay away from those markets where price is whipsawing up and down through the 34 SMA such as 9, 10, and 15. When price is whipping the SMA, it means that both the Bulls and Bears are fighting for control and it is best to stay away.

Let's exam each of the 16 charts and determine which are viable markets to place the EZtrender indicator on.

1. Yes, trending market. Apply EZtrender and Sell Short at first Red trigger.
2. Exercise caution due to recent trend change. Best to stay away.
3. Exercise caution due to recent trend change. Best to stay away.
4. Exercise caution due to recent trend change. Best to stay away.
5. Yes, trending market. Apply EZtrender and Buy Long at first Green trigger.
6. Yes, trending market. Apply EZtrender and Buy Long at first Green trigger.
7. Yes, trending market. Apply EZtrender and Sell Short at first Red trigger.
8. Yes, trending market. Apply EZtrender and Sell Short at first Red trigger.
9. Price is whipping the 34 SMA. Stay away.
10. Avoid. Purple moving average line is not steep enough and price is whipping the 34 SMA.
11. Yes, trending market. Apply EZtrender and Buy Long at first Green trigger.
12. Exercise caution due to recent trend change. Best to stay away.
13. Acceptable - trending market. Apply EZtrender and Buy Long at first Green trigger.
14. Yes, trending market. Apply EZtrender and Buy Long at first Green trigger.
15. Avoid. Purple moving average line is not steep enough and price is whipping the 34 SMA.
16. Yes, trending market. Apply EZtrender and Buy Long at first Green trigger.

### Enter on EZtrender color changes:

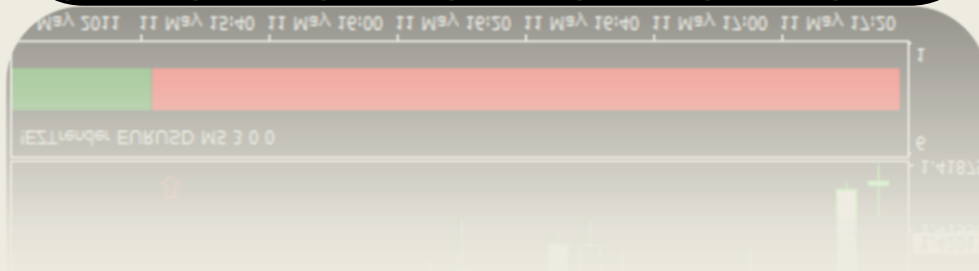


For example, if we are looking to Sell Short, we want to enter on the next Red EZtrender candle following a Green candle.

# VERY IMPORTANT

Enter **SHORT** trades ONLY if price is **BELOW** 34 SMA (purple line)

This Rule is NOT Optional



# VERY IMPORTANT

Enter LONG trades ONLY if price is ABOVE 34 SMA (purple line)  
This Rule is NOT Optional

