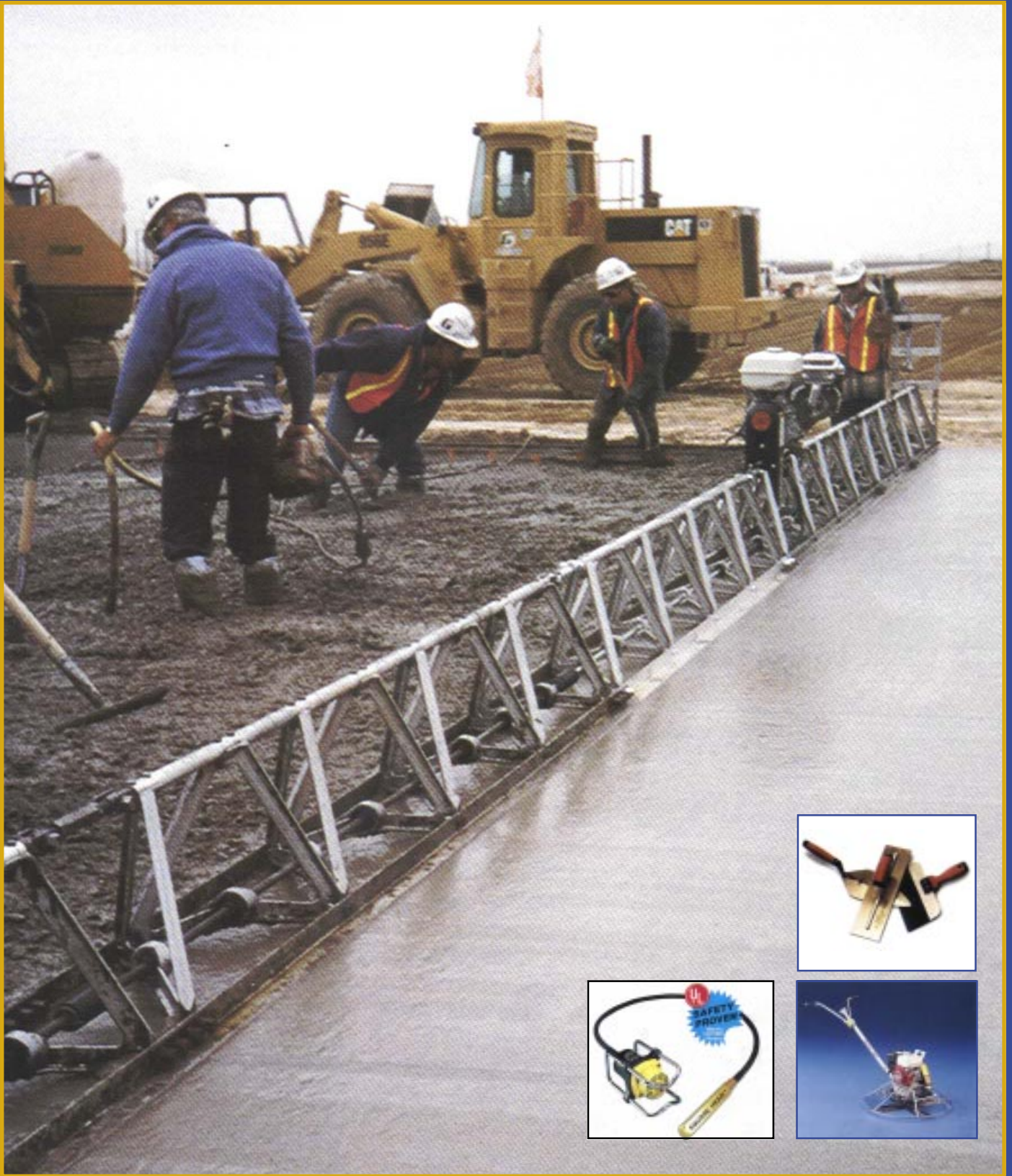


# American Tools & Machinery

## CONSTRUCTION E-CATALOG 2002



[www.atools.com.sg](http://www.atools.com.sg)



## COMPANY PROFILE

**American Tools & Machinery** (ATM) is a Singapore registered company that specializes in light construction equipment, hand tools and related products. We serve a diverse clientele in various industries such as in construction and marine.

ATM represents more than 10,000 products from renowned manufacturers in the USA and Europe. We are a full service supplier maintaining well-stocked warehouses (bonded and non-bonded) in Singapore for quick delivery of machinery, equipment and parts. From installation to maintenance, our staff is well equipped to provide expert advice, consultancy services and hands-on training.

### Reaching out to Asia

ATM is headquartered in Singapore, supported by agents/dealers located in South East Asia.

### In Partnership

We are the master distributor in Asia for

- **Marshalltown Trowel Company (USA)**
- **C. W. Tools (USA)**

These companies are well known in the construction field for making a wide range of Trowels, high quality Concrete Hand Tools, Bull Floats, Edgers, Groovers, Drywall & Plastering Hand Tools and many other fine tools.

ATM also supplies light construction equipment from:

- **MBW Inc (USA)**
- **Wyco Tool Company (USA) and**
- **OLI Srl (Italy)**

They manufacture a range of Concrete Vibration systems (i.e. square head and round head pockers) and Concrete screeds, Ground pounders, Power Trowels, Plate Compactors, Curb and Gutter machines, to name a few.

### Our Customers

We supply the industries a selective range of high quality products that are best suited to meet their needs, both at the dealer wholesale level as well as the end user at the retail end. However if a contact is made within a given region covered by our dealership agreement, then all contacts are forward to the respective dealer. This is the key to our ability to offer a high level of service to our customers at all times.

Through the years we have supplied our products to major construction projects in and around Asia some are listed below:

#### Singapore

Two PSA Container port facilities  
The SRC Oil refinery project  
Construction of the new US Embassy  
Suntec City Building projects  
New Causeway between Singapore and Malaysia

#### Hong Kong

Tsing Yi Bridge (Hong Kong Airport)

#### Vietnam

Heineken-Tiger-Vietnam Brewery  
Highway 1 project Saigon to Vung tau

#### Indonesia

Siemens Electric Factory extension  
New Airport - Jakarta Highway project

#### Philippines

Cebu Industrial Trade Free Zone extension

We pride ourselves in recommending and providing the most reliable solutions for all projects and applications, and trust that we may be of service to your organisation in the very near future.

## **American Tools & Machinery**

61-A Choa Chu Kang Road Nicon Gardens Singapore 689389

Telephone: (65) 6 221 8738 ext. 018 Fax: (65) 6 767 8562 Email: [mjr@pacific.net.sg](mailto:mjr@pacific.net.sg) URL: [www.atools.com.sg](http://www.atools.com.sg)

*ATM is actively seeking dealers/agents to market our fine selection of quality machinery and tools in existing and new territories in South East Asia. Interested parties, please contact Mr Mike Roberts.*



## CONTENTS



### **Section 1: Concrete Finishing Tools**

#### **Adapters**

- Rotolever® Handle Adapters 1-10
- Push Button Handle Adapters 1-10

#### **Brackets**

- Fresno bracket Adapters 1-10
- Rotalever® Bull Float bracket 1-9

#### **Bull Floats**

- Concrete Channel Bull Floats 1-8
- Concrete Magnesium Bull Floats 1-8
- Concrete Aluminum Bull Floats 1-8
- Concrete Wooden Bull Floats 1-9
- Bull Float Bracket Replacement Parts 1-9
- Universal Mounting Plates 1-9

#### **Chute Tools 1-15**

#### **Concrete Broom 1-15**

#### **Concrete Chisels 1-15**

#### **Concrete Slab Cutter 1-12**

#### **Concrete Tradesman Tools Kit 1-15**

#### **Concrete Placer 1-14**

#### **Curb Tools 1-6**

#### **Darbies**

- Mahogany Darbies 1-13
- Straight Magnesium Darbies 1-13

#### **Edgers**

- Stainless Steel Safety Step Edgers 1-6
- Straight End Steel Concrete Edgers 1-7
- Curved End Steel Concrete Edgers 1-7
- Stainless Steel 2-Way Walking Edgers 1-7

#### **Floats**

- Cast Magnesium Hand Floats 1-8
- Lightweight Magnesium Hand Floats 1-8
- Wood Floats 1-13

#### **Groovers**

- Stainless Steel Groovers 1-7
- Stainless Steel Walk Behind Groovers 1-7

#### **Gutter Tools 1-6**

#### **Handles**

- Screw on Handle Sections 1-10
- Push on Handle Sections 1-11

#### **Power Trowel Replacement Blades**

- Finishing Blade 1-5
- Float Blade 1-5
- Combination Blade 1-5

#### **Rub Bricks 1-13**

#### **Screeds**

- Magnesium Screeds 1-11

#### **Spred-Crete (Concrete Spreader) 1-11**



## **Trowels**

### **Corner Trowels**

Inside Corner Trowels 1-6

Outside Corner Trowels 1-6

Durasoft® Handle Xtralite® Finishing Trowels 1-3

Durasoft® Handle Xtralite® Midget Trowels 1-3

### **Fresno Trowels**

Fresno Trowels Round-End 1-11

Fresno Trowels Square-End 1-11

High Carbon Steel Xtralite® Trowels 1-3

High Carbon Steel Xtralite® Pool Trowels 1-3

Scratcher Trowels 1-15

Xtralite® Midget Trowels 1-3



## **Section 2: Drywall/Plastering Tools**

**Aluminum Hawk** 2-6

**Adjustable Skywalker Stilts®** 2-7

**Combination Paint Tool** 2-7

**Drywall Professional Tool Kit** 2-10

### **Floats**

Rubber Floats 2-3

### **Handles**

Pole Sander Handles 2-5

**Hopper Gun-SprayMate®** 2-10

### **Knives**

Joint Knives 2-4

Putty Knives 2-4

### **Mud Plans**

Galvanised Steel Mud Pans 2-4

Plastic Mud Plans 2-4

### **Sanders**

Hand Sanders 2-5

Universal Pole Sander 2-5

**Sandpaper - Die-cut** 2-5

**Sanding Sponge** 2-5

**T-Squares** 2-3

### **Taping Knives**

Durasoft® Handle Stainless Steel

Narrow Blade Taping Knives 2-8

Durasoft® Handle Stainless Steel Taping Knives 2-8

Long Handle Taping Knives 2-8

### **Trowels**

#### **Corner Trowels**

Inside Corner Trowels 2-4

Thin Coat Inside Corner Trowels 2-4

Finishing Trowel w/Curved Wood Handle 2-6

Finishing Trowel w/Curved Durasoft Handle 2-6

Drywall Trowel w/Straight Wood Handle 2-6

**Utility Saws** 2-3





## Section 3: Brick Layering Tools • Flooring and Tiling Tools

**Brick Hammers** 3-5

**Brick Jointers** 3-4

**Bricklayer's Professional Tool Kit** 3-5

**Mason's Chisels** 3-5

**Masonry Brush** 3-5

**Trowels**

Brick Trowels

Philadelphia Pattern Brick Trowels,

Wood Handle 3-3

Wide London Pattern Brick Trowels,

Wood Handle 3-3

Bucket Trowels 3-3

Gauging Trowels 3-4

Margin Trowels 3-4

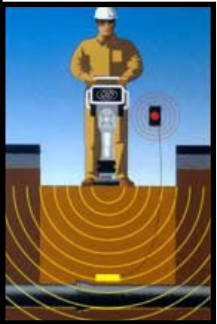
Nu-Pride Brick Trowels 3-4

Pointing Trowels 3-4, 3-6

Notched Trowels 3-7

**Rub Bricks** 4-7

**Tuck Pointers** 3-3



## Section 4: Construction Systems and Equipment

**Blitzscreed** 4-2

**Walk Behind Power Trowel** 4-3

**Concrete Vibration Finishing Screed** 4-3

**Vibratory Plates** 4-4

**Rammers** 4-4

**Soil Picks** 4-4

**Soil Compaction Meters** 4-5

**Slipform Pavers** 4-5

**Electronic Converter - CMS2-Type** 4-6

**High Frequency Immersion Vibrators,**

**Converters and Generators**

**VAF CM CS-CD** 4-8

**Flexible Shaft Immersion Vibrators with Direct**

**Electric Motor Connection - VD** 4-9

**High Frequency Vibrator with Electronic**

**Converter - WK-Type** 4-11