

ANTONIO VIVALDI  
Cessate, omai cessate

*Cantata ad Alto solo con Istrom.<sup>ti</sup>*

RV 684

Rev. 1.1

**Basso**

Non-commercial copying welcome

# Basso

## Largo e sciolto

Musical score for Bassoon, Largo e sciolto section. The score is in bass clef, 2/4 time, and B-flat major. It consists of five staves of music. The first staff starts with a measure rest followed by eighth notes, ending with a fortissimo (f) sixteenth-note tremolo. The second staff begins at measure 6 with eighth notes and a fortissimo (f) dynamic. The third staff begins at measure 11 with a piano (p) dynamic, followed by a fortissimo (f) dynamic. The fourth staff begins at measure 17 with a melodic line. The fifth staff begins at measure 24 with a fortissimo (f) dynamic and is marked **Allegro**.

## Larghetto

*Violoncello con arco. Violone pizzicato*

Musical score for Cello and Double Bass, Larghetto section. The score is in bass clef, 2/4 time, and B-flat major. It consists of five staves of music. The first staff is a continuous eighth-note pattern. The second staff begins at measure 4 with a section symbol (§) and a fortissimo (f) dynamic. The third staff begins at measure 7 with a fortissimo (f) dynamic, followed by a piano (p) dynamic. The fourth staff begins at measure 10 with a fortissimo (f) dynamic, followed by a piano (p) dynamic. The fifth staff begins at measure 13 with a fortissimo (f) dynamic.

16

19

22 *Con l'arco*

25 *Violoncello con arco. Violone pizzicato*

*Andante molto* [Con l'arco]

29

47

54

*Da Capo al Segno*

*Andante*

4

*Adagio*

9

## Allegro

7

14

21

28

34

40

47

54

60

*pp*

*f*

*p*

*f*

*p*

*f*

*pp*

*f*

*p*

*f*

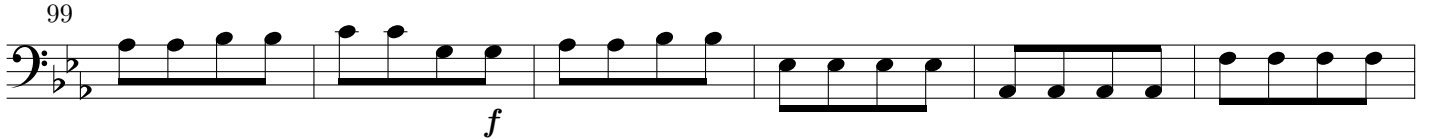
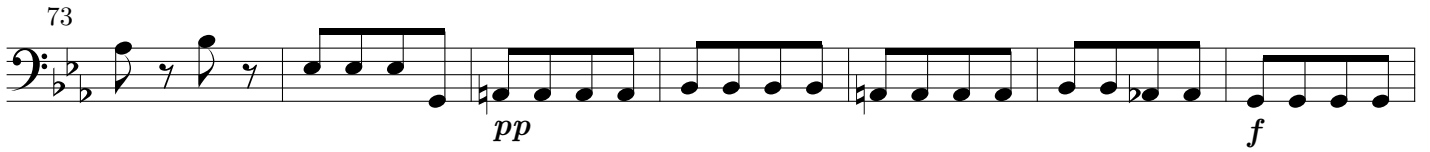
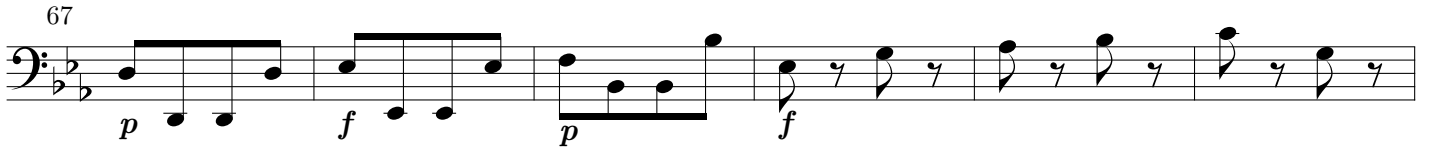
*p*

*f*

*f*

*p*

*f*



*Da Capo*