



**IEEE**

*Networking the World*™

**The Institute of Electrical and Electronic Engineers, Inc.**

# *IEEE Vision*

---

**To advance global prosperity by  
fostering technological innovation,  
enabling members' careers &  
promoting community world-wide.**

# *IEEE: Networking the World*

---

- **Foster technological innovation**
- **Enable members' careers**
- **Promote community worldwide**
- **World's largest technical professional society**
- **More than 375,000 members in more than 175 countries.**
- **IEEE members have advanced the profession, and develop technologies that benefit humanity.**

# *Enabling Members' Careers*

---

**IEEE encourages professional vitality through life-long learning for its members.**

- **International & local conferences, seminars & professional meetings for career development & networking**
- **Opportunities to develop leadership & other personal skills through volunteer activities**
- **More than 300 continuing education & training programs**
- **Career management tools & resource materials**
- **Financial services & portable benefit programs**

# *Fostering Technological Innovation*

---

**IEEE produces about 30% of the world's literature on electrical engineering, electronics & computing.**

- **A publishing program of periodicals, books, standards, conference proceedings, electronic products & mixed media**
- **Over 300 annual IEEE conferences**
- **Over 700 standards development groups**
- **37 Technical Societies & 4 Technical Councils**

# *Promote Community Worldwide*

---

**IEEE creates a sense of family & a community of members worldwide by:**

- **Extensive network of IEEE Societies, Sections, Chapters & Student Branches**
- **Serving as a vehicle to promote the industry & the profession**
- **Recognizing engineers' accomplishments through peer awards**
- **Establishing cooperative agreements with other technical societies around the world**

# *IEEE Mission*

---

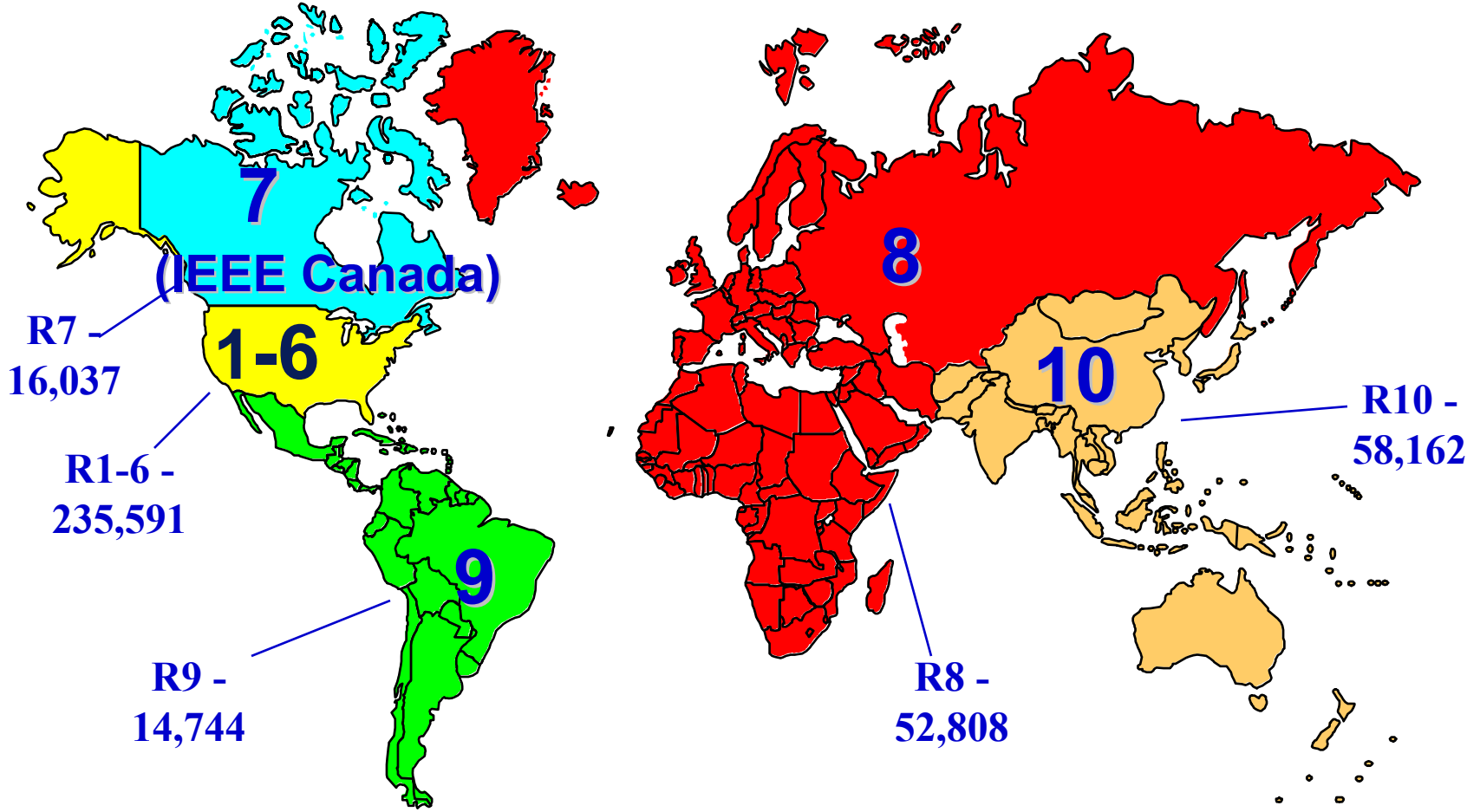
**The IEEE promotes the engineering process of creating, developing, integrating, sharing, & applying knowledge about electro- and information-technologies & sciences for the benefit of humanity & the profession.**

# Regional Activities



# *IEEE Membership By Regions*

*31 December 2001*



**TOTAL - 377,342**

# *Geographic Units*

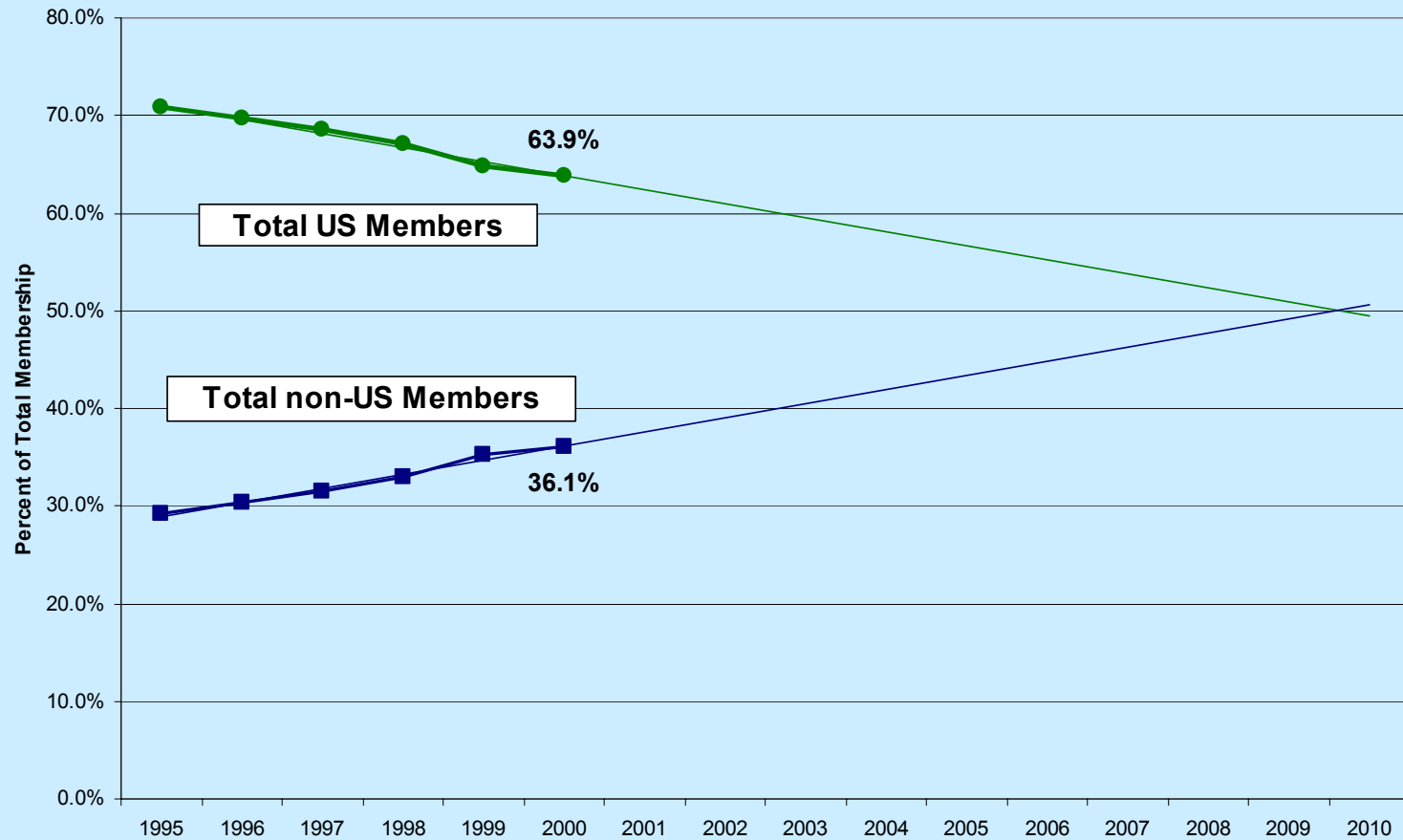
*31 December 2001`*

---

|  |       |
|--|-------|
| Regions                                      | 10    |
| Areas (in some Regions)                      | 24    |
| Councils (in some Regions)                   | 21    |
| Sections                                     | 298   |
| Subsections (in some Sections)               | 49    |
| Society Chapters (in some Sections/Councils) | 1,284 |
| Student Branches                             | 1,156 |
| Student Branch Chapters                      | 295   |
| <hr/>  |       |
| Total Geographical Units                     | 3,137 |

# US/non-US Membership Projections

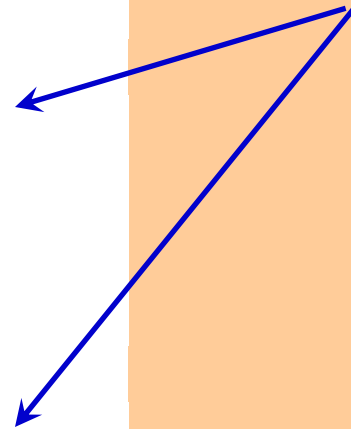
Membership Projections - US vs non-US



# Average Age of IEEE Members

| <i>Average Age of Members</i> |                 |                 |                |
|-------------------------------|-----------------|-----------------|----------------|
| <i>Region</i>                 | <i>High Grd</i> | <i>Students</i> | <i>Overall</i> |
| <i>Region 1</i>               | 50.3            | 25.7            | 48.4           |
| <i>Region 2</i>               | 49.9            | 25.8            | 47.6           |
| <i>Region 3</i>               | 49.4            | 26.2            | 46.4           |
| <i>Region 4</i>               | 46.9            | 24.8            | 43.6           |
| <i>Region 5</i>               | 46.4            | 24.8            | 43.7           |
| <u><i>Region 6</i></u>        | <u>48.2</u>     | <u>26.6</u>     | <u>46.4</u>    |
| <b><i>US Subtotal</i></b>     | <b>48.7</b>     | <b>25.7</b>     | <b>46.3</b>    |
| <i>Region 7</i>               | 43.9            | 24.6            | 39.7           |
| <i>Region 8</i>               | 41.6            | 25.2            | 38.1           |
| <i>Region 9</i>               | 38.7            | 23.9            | 32.2           |
| <u><i>Region 10</i></u>       | <u>38.5</u>     | <u>22.6</u>     | <u>34.4</u>    |
| <b><i>Non-US Subtotal</i></b> | <b>40.4</b>     | <b>23.8</b>     | <b>36.1</b>    |
| <b>TOTAL</b>                  | <b>46.0</b>     | <b>24.6</b>     | <b>42.6</b>    |

There is a 10 Year difference in the average age between US and non-US Members



# Region GOLD Membership\*

|           | Total HG | Active GOLD | Percent |
|-----------|----------|-------------|---------|
| Region 1  | 40,718   | 4,910       | 12%     |
| Region 2  | 32,201   | 4,426       | 13%     |
| Region 3  | 27,492   | 4,793       | 17%     |
| Region 4  | 22,036   | 4,277       | 19%     |
| Region 5  | 27,635   | 5,614       | 20%     |
| Region 6  | 58,967   | 8,972       | 15%     |
| Region 7  | 12,087   | 3,169       | 26%     |
| Region 8  | 38,098   | 7,072       | 18%     |
| Region 9  | 7,627    | 3,074       | 40%     |
| Region 10 | 40,954   | 13,593      | 33%     |
| Totals    | 307,815  | 59,900      | 19%     |

\*Year End 2000

# *IEEE Student Membership*

---

| <b>Region</b> | <b>2001 Total</b> | <b>1998 Total</b> |
|---------------|-------------------|-------------------|
| <b>1</b>      | <b>3,701</b>      | <b>2,249</b>      |
| <b>2</b>      | <b>3,581</b>      | <b>3,023</b>      |
| <b>3</b>      | <b>4,440</b>      | <b>4,174</b>      |
| <b>4</b>      | <b>3,881</b>      | <b>3,811</b>      |
| <b>5</b>      | <b>4,161</b>      | <b>4,534</b>      |
| <b>6</b>      | <b>6,328</b>      | <b>4,073</b>      |
| <b>7</b>      | <b>3,504</b>      | <b>3,169</b>      |
| <b>8</b>      | <b>12,152</b>     | <b>8,068</b>      |
| <b>9</b>      | <b>7,150</b>      | <b>5,369</b>      |
| <b>10</b>     | <b>16,771</b>     | <b>8,925</b>      |
| <b>Total</b>  | <b>65,669</b>     | <b>49,395</b>     |

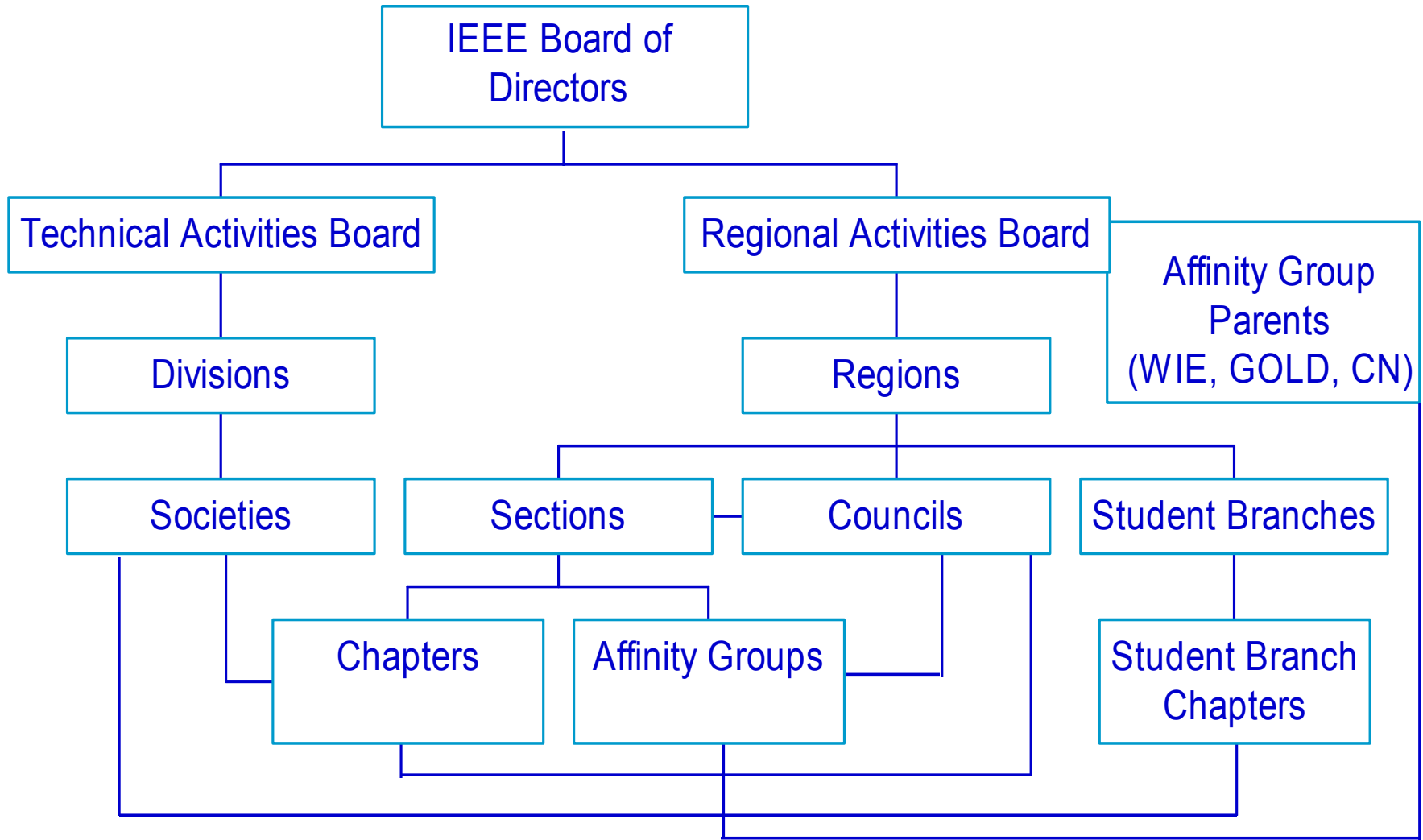
# *Career & Educational Activities*

## Enabling Careers through Life-long Learning

---

- **Continuing education programs organized by Sections can be tailored for local membership needs.**
- **These activities are most important, since they are planned by members & cater directly to member needs.**
- ***Section Education Chair's Guide to Planning Successful Educational Programs* provides guidelines for organizing continuing education activities.**

# Geographic & Technical Unit Relationships





# Geographic Unit Relationships

- **Regions oversee Sections**
- **Sections oversee Subsections, Chapters and Affinity Groups**
- **Councils are comprised of Sections, and exist at the pleasure of the member Sections**
- **Some Councils (but not all) have Chapters and Affinity Groups, and therefore oversee them**

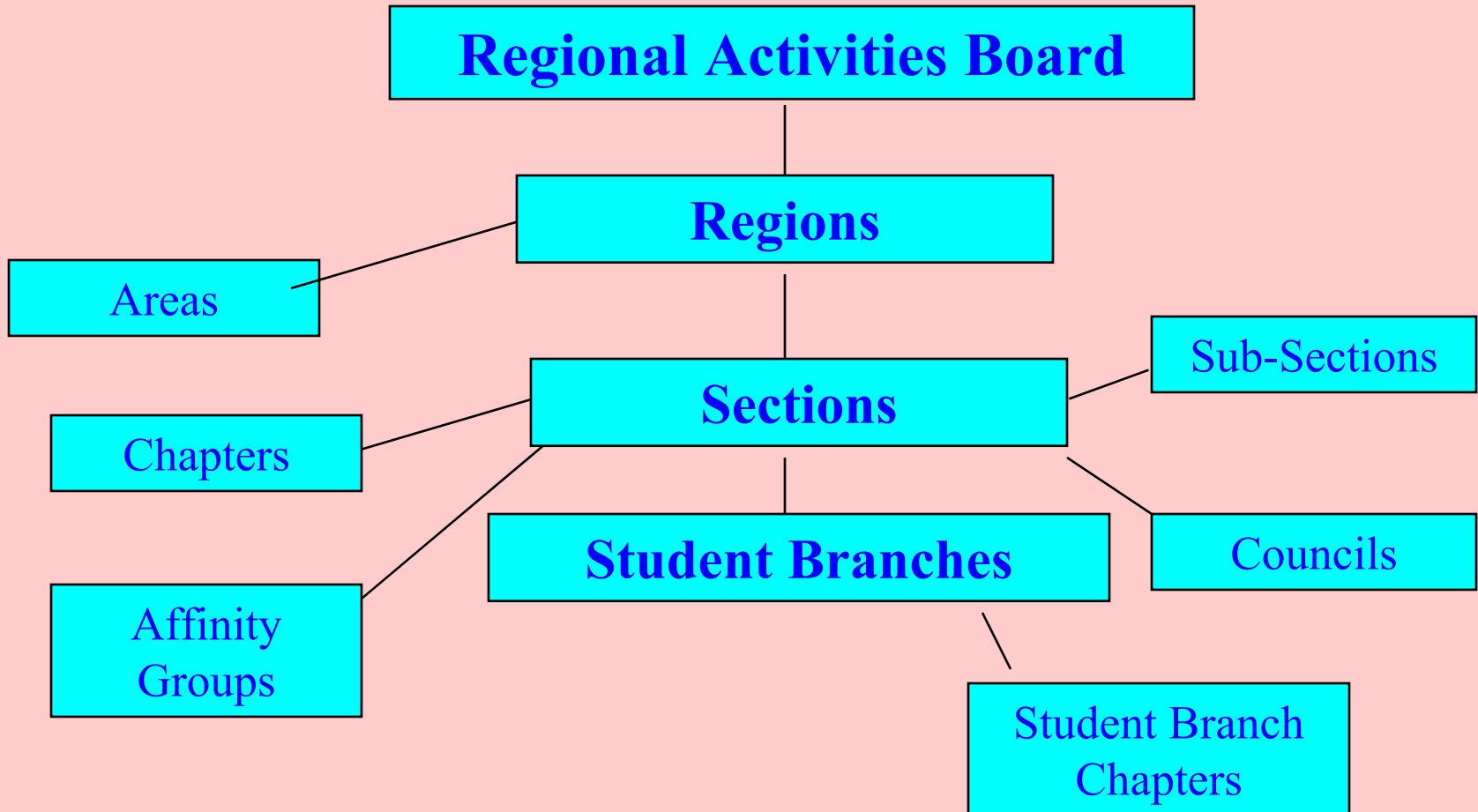
# Geographic Unit Relationships

- Affinity Group Parents also oversee Affinity Groups (WIE, Consultants' Networks, GOLD)
- Student Branches oversee Student Branch Chapters
- Societies also oversee Chapters and Student Branch Chapters

# *Regional Structure*

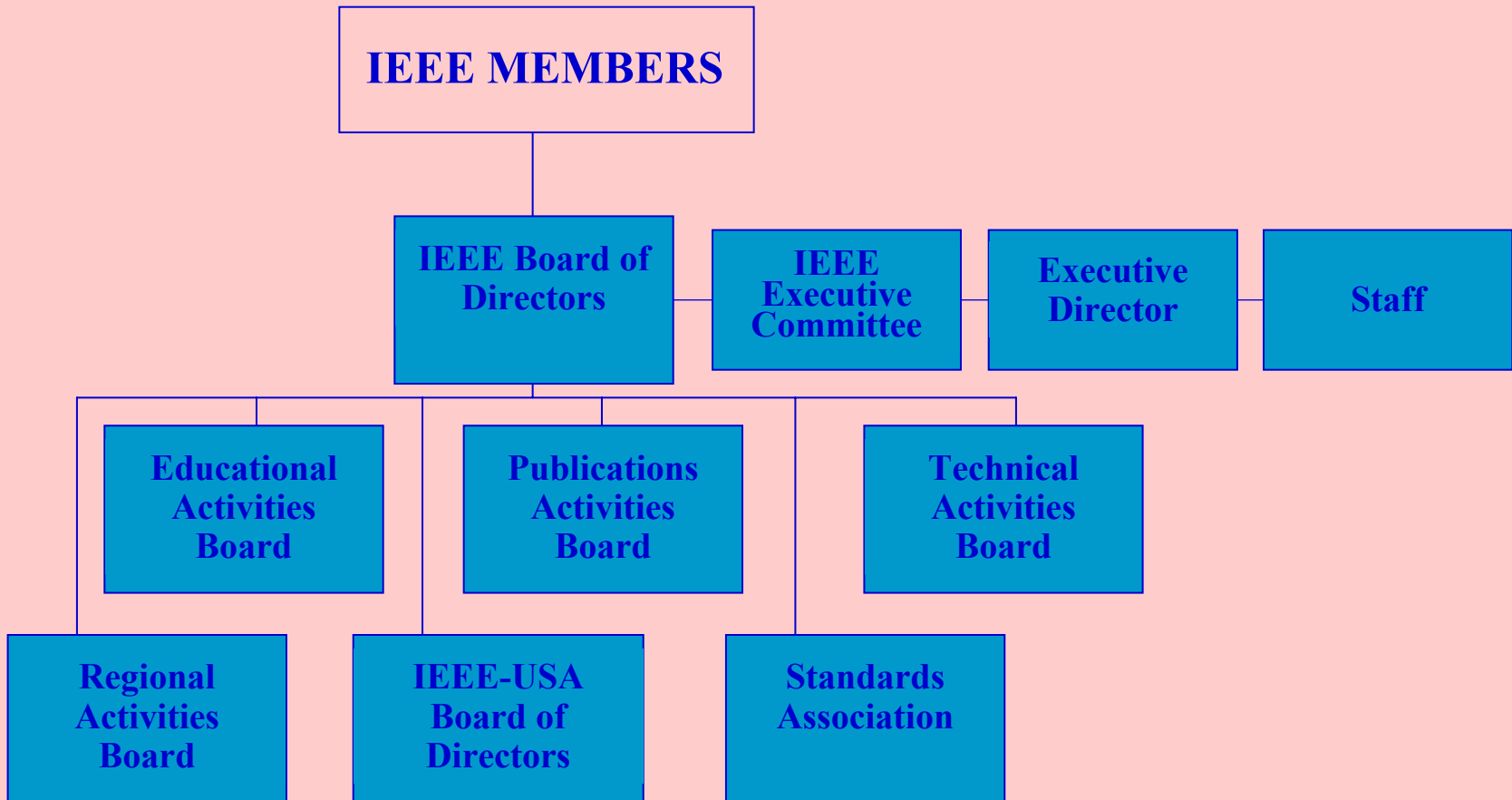
---

---

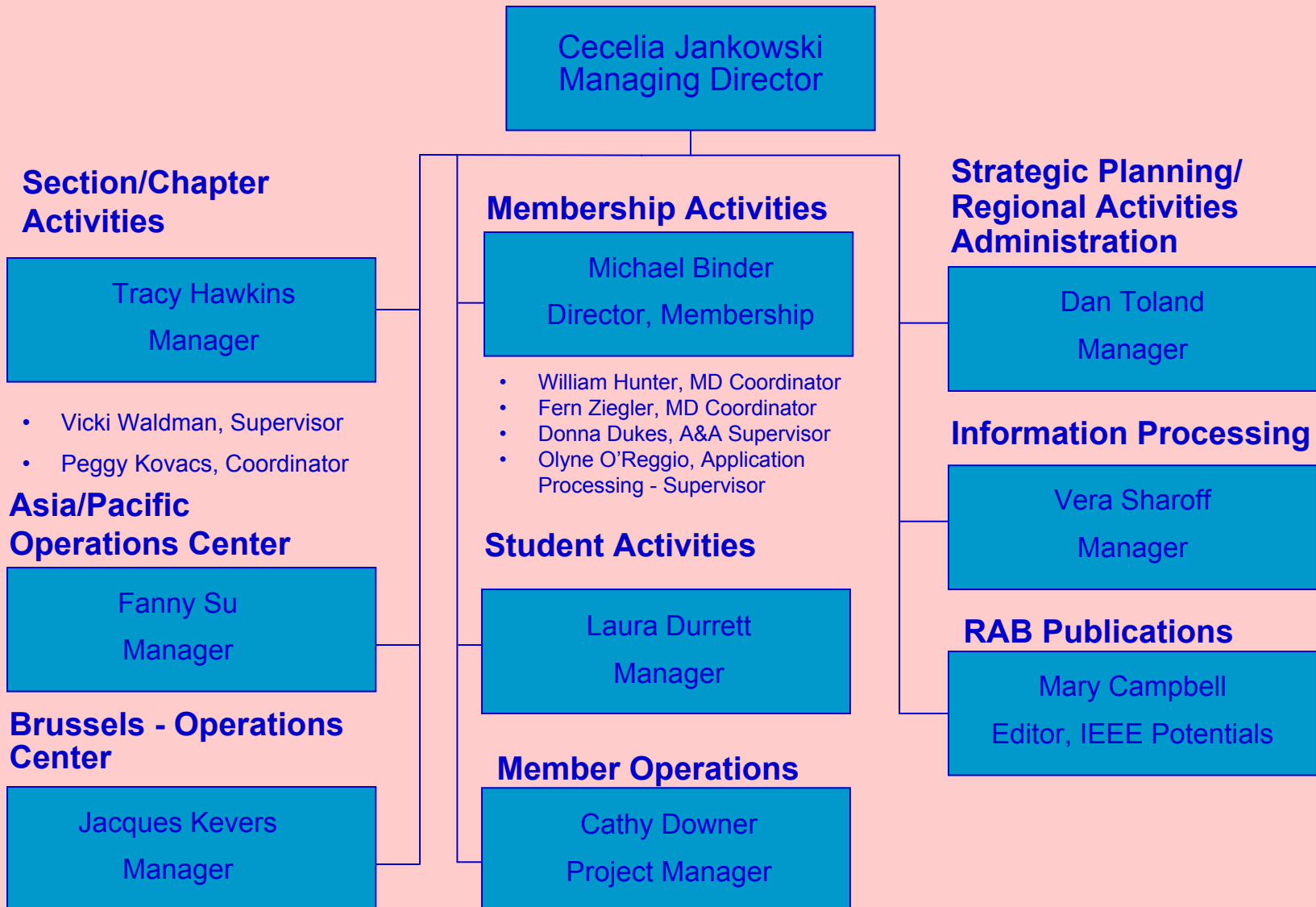


# *IEEE Organization*

---



# IEEE Regional Activities Staff



# Regional Activities Responsibilities

---

- Services for members, including students
- Services for geographic volunteers
- Admission & Advancement
- Membership Development
- Services for Transnational Committee

**...Services for ALL Members**

# Services for Transnational Board, Geographic Entities & Others

---

Administrative  
**Policy, Officer Rosters, Entity Formation, Bylaws,  
Statistics, Supplies & Labels**

Program Development  
**Sections Congress**

Financial  
**Rebates, Custody Accounts**

Student Services

Electronic Communication  
**SAMIEEE, Email, Web, Entity Web Hosting**

# Section Rebate Program

- **\$1800 Flat Fee PLUS:**
  - **\$3/member (Students & Affiliates included)**
  - **\$180/eligible Chapter & Affinity Group**
  - **10% bonus for reporting on time (Feb)**
  - **Unit and subunits must comply with activity and reporting requirements**



# Region Assistance

- Section Support Via Regions (SSVR)
  - Funds set aside by RAB each year
  - To be used at the discretion of the Region Director

# Electronic Services Available

- SAMIEEE
- Entity Web Hosting
- Majordomo lists
- Geographic Roster
- Email aliases

<http://www.ieee.org/organizations/vols/>

Click on “Electronic Web Services”

# SAMIEEE

- Section Access to Member Information
- Updated monthly (download from web)
- Provided to the Section for dissemination to subunits
- Use is restricted to IEEE-related activity

# SAMIEEE, the Program

- Or SAMIEEE the data
- FoxPro database
- But you can use it in any database management software you choose
- Filter capability
- Export data as needed
- Monthly import & update function

# Entity Web Hosting (EWH)

- Host your unit's web page on the IEEE server free of charge
- 10 MB space allowed per unit
- Templates available for use  
<http://ewh.ieee.org/>

# Geographic Roster

- <http://www.ieee.org/roster>
- Must have an IEEE web account and must be listed in the Roster in order to have access
- Updated every two weeks
- Includes all Region, Section, and Council officers as reported to IEEE Staff
- Updates? [officer-data@ieee.org](mailto:officer-data@ieee.org)
- Data extracted directly from IEEE member database

# IEEE Email Aliases

- One email address . . . no matter how many times you change jobs or ISPs!
- Virus-checking on all attachments
  - Attachment deleted if virus detected
  - Notification sent to recipient & sender

<http://elecomm.ieee.org/personal-aliases.shtml>

# *IEEE Awards & Recognition*

---

**Peer recognition to individuals whose contributions to the art and science of electro- and information technologies world-wide have improved the quality of daily life**

- **Medal of Honor/IEEE Medals**
- **IEEE Fellows**
- **Technical Field Awards**
- **Honorary Membership**
- **Service Awards**
- **Corporate Recognition**
- **Prize Paper Awards**
- **Society & Conference Awards**
- **Public Service & Professional Recognition**
- **Geographic Unit Awards**

*<http://www.ieee.org/about/awards/>*



**chapters**

# IEEE Society Chapter Funding

- Section is rebated \$180 per chapter
- This occurs only if the Chapter reports
- Societies may provide funding for Chapter initiatives (contact the Society Chapter Coordinator)
- Joint Chapters may be eligible for funding from both Societies

# Society Chapter Services

- Chapter Subsidies and special programs
  - Approval and processing of payments
  - To request more information send inquiries to:  
“[tad-chap-dev@ieee.org](mailto:tad-chap-dev@ieee.org)”
- Electronic Chapter Membership Listings
  - lists of eligible society chapter members and their contact information
- Chapter Membership Mailing Labels
  - mailing labels for use in coordinating chapter activities and special events

<http://www.ieee.org/organizations/tab/officers.html>

**Technical**

**Societies and Councils**

# Societies and Councils (1)

- IEEE Aerospace and Electronic Systems
- IEEE Antennas and Propagation
- IEEE Broadcast Technology
- IEEE Circuits and Systems
- IEEE Communications
- IEEE Components, Packaging, and Manufacturing Technology
- IEEE Computer
- IEEE Consumer Electronics
- IEEE Control Systems
- IEEE Dielectrics and Electrical Insulation
- IEEE Education
- IEEE Signal Processing
- IEEE Electromagnetic Compatibility
- IEEE Electron Devices
- IEEE Engineering in Medicine and Biology
- IEEE Engineering Management
- IEEE Geoscience and Remote Sensing
- IEEE Industrial Electronics
- IEEE Industry Applications
- IEEE Information Theory
- IEEE Instrumentation and Measurement
- IEEE Lasers and Electro-Optics

# Societies and Councils (2)

- IEEE Robotics and Automation
- IEEE Magnetics
- IEEE Microwave Theory and Techniques
- IEEE Neural Networks
- IEEE Nuclear and Plasma Sciences
- IEEE Oceanic Engineering
- IEEE Power Electronics
- IEEE Power Engineering
- IEEE Professional Communication
- IEEE Reliability
- IEEE Social Implications of Technology
- IEEE Solid-State Circuits
- IEEE Systems, Man, and Cybernetics
- IEEE Ultrasonics, Ferroelectrics, and Frequency Control
- IEEE Vehicular Technology
- IEEE Council on Superconductivity
- IEEE Sensors Council
- IEEE Intelligent Transportation Systems Council
- IEEE Nanotechnology Council

# Society Activities

- Technical Information
  - Publications
  - What's New
  - Conferences
  - Distinguished Lectures
- Standards Development
- Awards and Recognition
- Support Student and Chapter Activities
- Other services

# **Distinguished Lectures Program**

- **A personal visit from a renowned expert**
- **Offered by Societies or Councils**
- **Provides outstanding technical content at a meeting**
- **Visit counts towards meeting requirements**
- **Opportunity to enhance Chapter activities**



# More on Distinguished Lectures

- Each sponsoring Society or Council coordinates its own program
- Funding determined by the Society
- Society determines which entities are eligible
- More information at:
- <http://www.ieee.org/organizations/tab/cialectweb2.html>

# How to get a Distinguished Lecturer

- 32 Societies participate in the program
- There are different rules among the Societies
- Arrangements must be made directly with the sponsoring Society
- For details contact:

[society-lecturers@ieee.org](mailto:society-lecturers@ieee.org)

# Distinguished Lectures

- Tried new electronic format:
  - ↑IEEE Communications Society
  - ↑IEEE Engineering Management Society
  - ↑IEEE Power Engineering Society
- CD format coupled with conference call for questions targeted at bringing technical information to Sections and Chapters
- Less valuable than in person lecturers

# Society Support for Student Activities

- Society-sponsored student awards and scholarships
- Discounts on society membership and publications
- Student rates and Special events at conferences
- Student representatives to Society AdCom

# conferences

- Annually more than 100,000 participants at 300 Society/Council sponsored Conferences
- Additionally there are numerous technical meetings sponsored by Regions, Sections, and Chapters
- IEEE Conference Search:  
[www.ieee.org/conferencesearch/](http://www.ieee.org/conferencesearch/)

# Conference Search

IEEE Conference Database Search - Netscape

File Edit View Go Communicator Help

IEEE  
Advancing the World

About IEEE | IEEE Memberships | Products & Services | Conferences | IEEE Organization

Search Join Newroom Shop Site Map Tour IEEE Home

## IEEE Conference Database Search

Month:

Year:

Conference keyword:  
(This must be a Conference keyword or acronym.)

City:

State/Province:

Country:  
(only if outside of United States;  
fully spell out country)

IEEE Region where  
conference will be held:

Record #:  
(enter numeric characters only)

Sponsor:

Exhibits:

[Back to Technical Activities Home](#)

IEEE Technical Activities  
<http://www.ieee.org/conferencesearch>  
email: [conference-services@ieee.org](mailto:conference-services@ieee.org)  
+1 732 562 3878

- Search by:
  - month
  - year
  - key word
  - location
  - sponsor
  - IEEE Region

# Detailed conference information

IEEE Conference Database Search - Netscape

File Edit View Go Communicator Help

Back Forward Reload Home Search Netscape Print Security Shop Stop

IEEE  
Networking the World

About IEEE | IEEE Memberships | Products & Services | Conferences | IEEE Organizations

Search Join Newswroom Shop Site Map Tour IEEE Home

## IEEE Conference Database Search

Here are the details of your conference selection:

| Date  | Conference Name   | Record #   |                  |
|---|---|--|------------------|
| 18 Jun - 23 Jun 2000  | 2000 IEEE Power Electronics Specialist Conference - PESC 2000 | 5327   |                  |
| <b>Location</b>   |   | <b>Information Contact</b>   |                  |
| National University of Ireland<br>Galway, Ireland                   |   | Mr. Robert Myers<br>799 North Beverly Glen<br>Los Angeles, CA 90077<br>(+1 310 466 8280<br>+1 310 466 8390 (Fax)<br>bob.myers@ieee.org |                  |
| <b>Conference Web Site URL</b>                                      |   |  |                  |
| <a href="http://pesc00.nuigalway.ie">http://pesc00.nuigalway.ie</a> |   |  |                  |
| <b>IEEE Sponsor(s)</b>  |   | <b>Other Sponsor(s)</b>  |                  |
| PEL   |   |  |                  |
| <b>Exhibits</b>   | <b>Attendance</b>   | <b>Proceedings/Publications</b>  | <b>Tutorials</b> |
| N   | 450   | CH37018  |                  |

Return to Search Results List

Document: Done

Start | Jayne's Folder | Microsoft PowerPoint - [col... | IEEE Conference Dat... | 9:28 AM

- Specifics on date and location
- Contact information
- link to conference URL
- attendance
- exhibits
- link to purchase proceedings





# Organizing a Conference

- IEEE Conference Organization Manual
- IEEE Best Practices Manual
- Planning Calendars
- Forms
- Financial Policies
- Budget Tools
- Web Registration
- Credit Card Processing
- Contracting Support and more...

[www.ieee.org/organizations/tab/conflink.html](http://www.ieee.org/organizations/tab/conflink.html)

**Publications**

# *IEEE Publications*

---

- **World's leading publisher in Electrical and Computer Science**
- ***Spectrum* Magazine - award winning monthly publication**
- **The INSTITUTE - news supplement to Spectrum**
- **IEEE *Potentials* Magazine - quarterly magazine for student and recent graduate members**
- **OPeRA (Online Periodicals Research Area) - search, browse selected IEEE Transactions & Journal to members of participating technical societies**
- **IEEE/IEE Electronic Library (IEL) - 32% of world's current literature in electrical engineering and computer science.**

*<http://www.ieee.org/organizations/pubs/pubs.html>*

# Technical Publications

- **79 Transactions and Journals (archival publications)**
- **29 Society/Council Magazines**
- **21 Society/Council Newsletters**
- **350+ Conference Proceedings annually**

# What's new in Publications?

- **Large and growing scope of content**
- **Different methods of access (e.g. Electronic, Paper)**
- **New packaging of information**
  - **Individual article access**
  - **Specialized packages**
- **Improving authoring process**

# New Technical Information Packaging

- IEEE Digital Library for Members
  - Member Access to all IEEE publications
- IEEE Biomedical Library Online
  - Access to selected subset of IEEE articles related to Biomedical activities

# New Content Areas

- Six new journals
  - IEEE Transactions on Wireless Communication
  - IEEE Antennas and Wireless Propagation Letters
  - IEEE Transactions on Nanotechnology
  - IEEE Transactions on Mobile Computing
  - IEEE Pervasive Computing Magazine
  - IEEE Transactions on NanoBioscience

# Access to Technical Information

- Electronic Access

- IEEE Xplore \*

<http://www.ieee.org/ieeexplore>

- What's New @ IEEE \*

<http://whatsnew.ieee.org/>

- Ask\*IEEE

<http://www.ieee.org/services/infoadvantage/>



# IEEE Xplore™

- **Contains over 756,400 documents published since 1988**
- **Supports**
  - **Subscriptions for members**
  - **Packages (IEL, ASPP, POP) for institutional customers**
- **Free access to tables of contents of all periodicals, conference proceedings, and standards**

- Home
- Log-out

Tables of Contents

- Journals & Magazines
- Conference Proceedings
- Standards

Search

- By Author
- Basic
- Advanced

Member Services

- Join IEEE
- Establish an e-account

Make your first title selections or change your existing selection here. You may also update your email address or unsubscribe to this service.

Make corrections to your name and or email address.

Name:

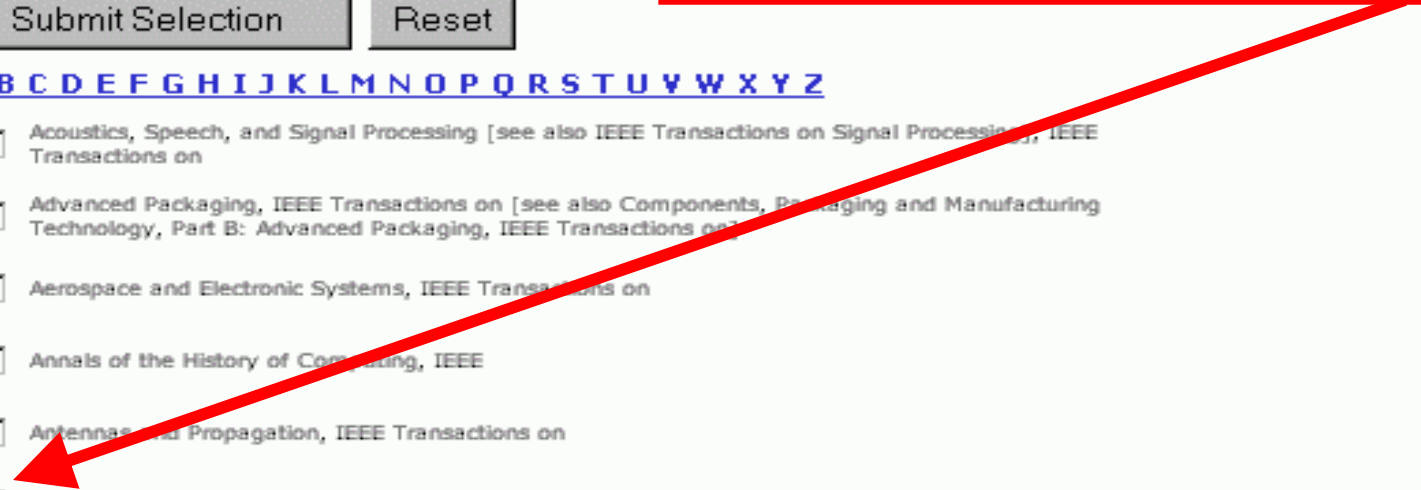
Enter your email address:

If you would like to unsubscribe from this service:

[A](#) [B](#) [C](#) [D](#) [E](#) [F](#) [G](#) [H](#) [I](#) [J](#) [K](#) [L](#) [M](#) [N](#) [O](#) [P](#) [Q](#) [R](#) [S](#) [T](#) [U](#) [V](#) [W](#) [X](#) [Y](#) [Z](#)

- Acoustics, Speech, and Signal Processing [see also IEEE Transactions on Signal Processing], IEEE Transactions on
- Advanced Packaging, IEEE Transactions on [see also Components, Packaging and Manufacturing Technology, Part B: Advanced Packaging, IEEE Transactions on]
- Aerospace and Electronic Systems, IEEE Transactions on
- Annals of the History of Computing, IEEE
- Antennas and Propagation, IEEE Transactions on
- Applied Superconductivity, IEEE Transactions on
- ASSP Magazine, IEEE [see also IEEE Signal Processing Magazine]

***“E-Mail Alerts”***  
 Personalized alert when latest issue is released.  
 User picks periodicals from list.



Welcome to IEEE Xplore™

- [Home](#)
- [Log-out](#)

Tables of Contents

- [Journals & Magazines](#)
- [Conference Proceedings](#)
- [Standards](#)

Search

- [By Author](#)
- [Basic](#)
- [Advanced](#)

Member Services

- [Join IEEE](#)
- [Establish IEEE Web Account](#)

### Systems, Man and Cybernetics, Part B, IEEE Transactions on

#### Forthcoming Articles:

[Accepted for future publication](#)

#### 2001 issues:

- [Oct. 2001, Vol.31, Issue 5](#)
- [Aug 2001, Vol.31, Issue 4](#)
- [Jun 2001, Vol.31, Issue 3](#)
- [Apr 2001, Vol.31, Issue 2](#)
- [Feb 2001, Vol.31, Issue 1](#)

#### Previous Years:

- [2000](#) [1999](#) [1998](#)
- [1997](#) [1996](#)

#### For IEEE Members and Publication Subscribers:

To quickly search the abstract and citation records of this publication:

- 1) Enter a keyword, phrase, or Boolean expression.  
Example: acoustic imaging  
Example: Jones and 1998
- 2) Click Search.

Search

Note: This function returns plural and suffixed forms of the keyword(s).

#### Publication Information:

- [About this publication;](#)
- [IEEE Information for Authors;](#)
- [Additional Information for Authors;](#)
- [Sponsoring IEEE Society/Societies:](#)

**“Forthcoming Articles”**  
Articles online before print.  
Still reviewed and edited first.

Click the Download Now button to initiate the extended object download. The object is compressed into files to make the download process more efficient.

Open the associated Readme file for more information or contact information.

• **This object is part of the following article:**

**Linguistic description of relative positions in Systems, Man and Cybernetics, Part B, IEEE Transactions**  
Volume: 31  
Issue: 4  
Year: Aug 2001

**“Extended Objects”**

Multimedia enhancements  
to articles.

Can be used by both  
print and online subscribers.

The object is designed to be used on a Windows platform. It is compressed using the Zip format.

• **The compressed file includes:**

This supplementary multimedia content includes six AVI format animations (discussed in Section V-A of the article), which show natural scenes with linguistic descriptions.

**31smcb04-matsakis-mm.zip**

**(2.1 MB)**

[Readme file](#)

**Download Now**

**Close**

If you have any problems downloading this object, please contact our technical support desk

# What's New@IEEE



[About IEEE](#) | [IEEE Memberships](#) | [Products & Services](#) | [Conferences](#) | [IEEE Organizations](#)

[Search](#) | [Join](#) | [Newsroom](#) | [Shop](#) | [Site Map](#) | [Tour IEEE](#) | [Home](#)

## What's New @ IEEE



Timely email updates on IEEE news and more!

### WHAT'S NEW @ IEEE RECEIVES GOLD CIRCLE AWARD

What's New @ IEEE has received the 2000 Gold Circle Trophy in Electronic Newsletters/Bulletins. The Gold Circle award is presented by the American Society of Association Executives (ASAE). ASAE has consistently recognized excellence in association communications for more than 20 years. Special thanks to all of our readers for your help in making our efforts a success.

### *What's New @ IEEE for Members*

VOLUME 1 NUMBER 6 NOVEMBER 2000

#### CONTENTS:

1. [Top 10 Digital Workplaces](#)
2. [Making the Most of Membership: Local Meetings](#)
3. [Three IEEE Members Named Nobel Laureates](#)
4. [Bridging the Generation Gap at Work](#)
5. [Access Information at the Speed of a Click](#)
6. [Renew it or Lose it!](#)
7. [New Standards Terms Dictionary Available](#)
8. [Can You Name This Photo?](#)
9. [A Space Station in Search of a Name](#)
10. [Roadmap to Success - From IEEE Fatbrain](#)
11. [The Internet... What's Next?](#)

---

#### \*WHAT'S NEW SPECIAL\*

20% OFF SELECT IEEE PRODUCTS LISTED IN THIS ISSUE!

Look for the What's New Specials and order instructions below.

---

#### 1. TOP 10 DIGITAL WORKPLACES

Does your company make high technology work for you while you wc

---

- Opt-in
- Monthly IEEE and technology news
- Tailored to specific members' interest
- Over 100,000 subscriptions, up from 67,000 in 2000

# What's New @ IEEE Categories

- What's New @ IEEE for Members
- What's New @ IEEE for Graduates of the Last Decade
- What's New @ IEEE in Communications
- What's New @ IEEE in Computing
- What's New @ IEEE in Circuits
- What's New @ IEEE in Power
- What's New @ IEEE in Signal Processing
- What's New @ IEEE in Wireless
- What's New @ IEEE for Students
- What's New @ IEEE for Libraries

<http://whatsnew.ieee.org/>

# Improving the Authoring Process

## IEEE Manuscript Central

- Web based manuscript submission and peer review system
  - Author submits article via web
  - Review done via secure web site
  - Editor tracks article progress
  - System helps with reminders
- Piloted in 1999
- 27 Publications using Manuscript Central

# Volunteer Opportunities

- Section officer
- Chapter officer or Chapter coordinator
- Committee Chair
- IEEE Society officer
- Conference organizer
- Publication editor or co-editor
- Liaison with other groups
- Member of Technical Activities Board





**IEEE**

*Networking the World* <sup>TM</sup>

**The Institute of Electrical and Electronic Engineers, Inc.**

**sections**  
**congress**

# Sections Congress 2002

- JW Marriott Hotel, Washington, DC
- 18-21 October 2002
- Triennial gathering of IEEE grassroots leadership to
  - network with other Section leaders
  - attend training programs
  - develop recommendations to guide the future of the Institute

# Representation at SC '02

- **Each Section is encouraged to send one or more Delegates to this event**
- **Section leaders (present or future) are the target audience**
- **Registration fee of \$260 is waived for primary delegate**
- **Primary delegate represents their Section when voting on recommendations**



**IEEE**

*Networking the World* <sup>TM</sup>

**The Institute of Electrical and Electronic Engineers, Inc.**