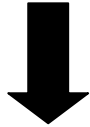
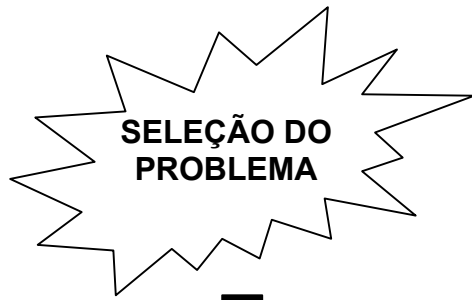


# SITUAÇÃO ATUAL & ANÁLISE



COLETA DE DADOS

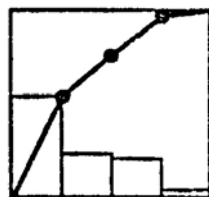
11	XX	XX	XX	XX
11	XX	XX	XX	XX
11	XX	XX	XX	XX
11	XX	XX	XX	XX
11	XX	XX	XX	XX



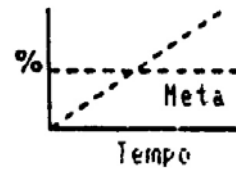
ESTRATIFICAR DADOS



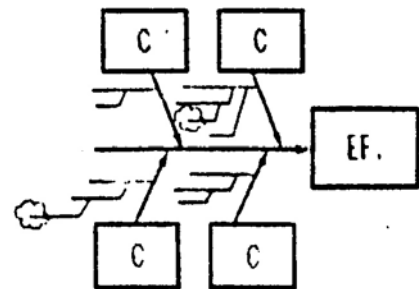
SELEÇÃO DO PROBLEMA



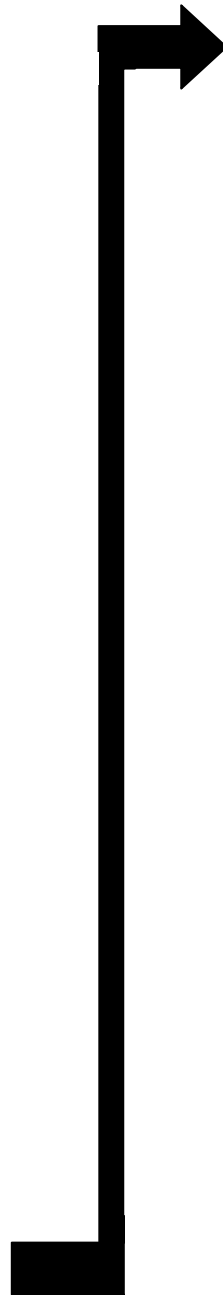
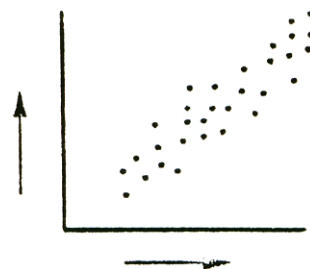
ESTABELECEER META



ANÁLISE DE CAUSA E EFEITO



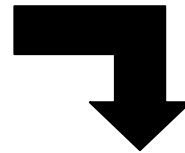
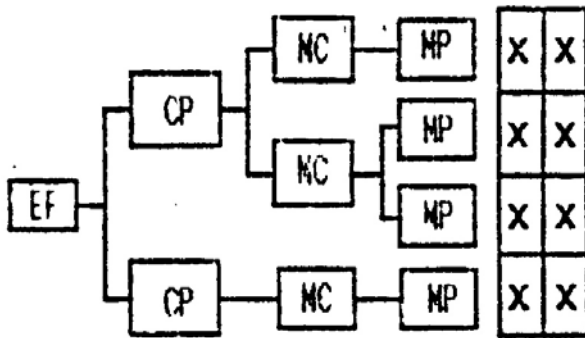
VERIFICAR CAUSAS POTENCIAIS COM DADOS



# MEDIDAS CORRETIVAS

## MATRIZ DE MEDIDAS CORRETIVAS:

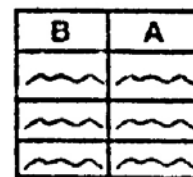
- CAUSAS EM POTENCIAL
- MÉTODOS PRÁTICOS
- AVALIAR:
  - o EFETIBILIDADE
  - o EXEQUIBILIDADE



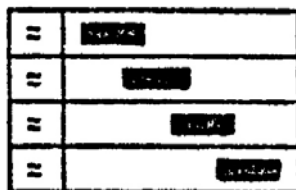
### ANALISAR CUSTO/BENEFÍCIO



### ANALISAR BARREIRAS E AJUDAS

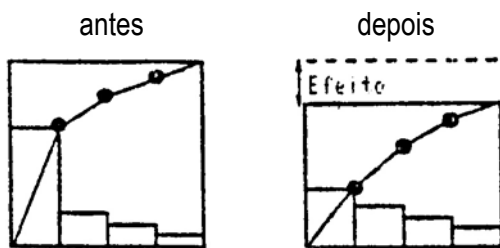


### PREPARAR PLANO DE AÇÃO



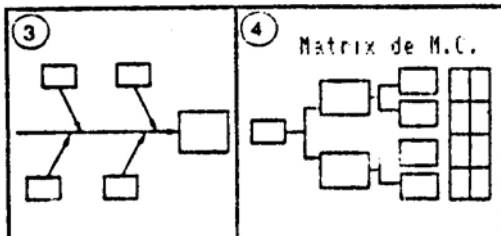
# RESULTADOS & PADRONIZAÇÃO

**CONFIRMAR REDUÇÃO DAS CAUSAS POTENCIAIS**

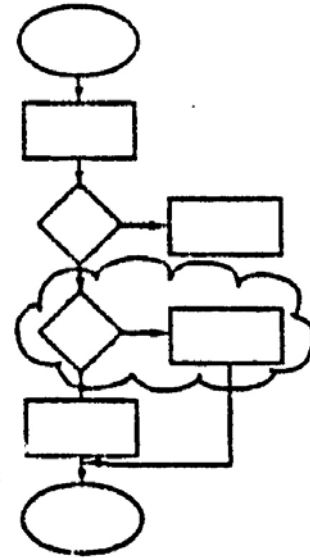


**MEDIDAS CORRETIVAS NÃO FORAM EFICAZES:**

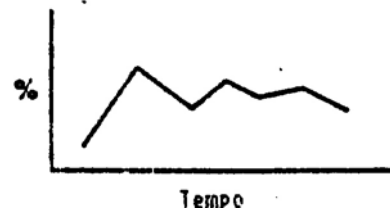
- REVER OS PASSOS DE ANÁLISE E MEDIDAS CORRETIVAS



**FLUXOGRAMA DO PROCESSO**



**SISTEMA DE MONITORAÇÃO**



**PROCEDIMENTOS**

