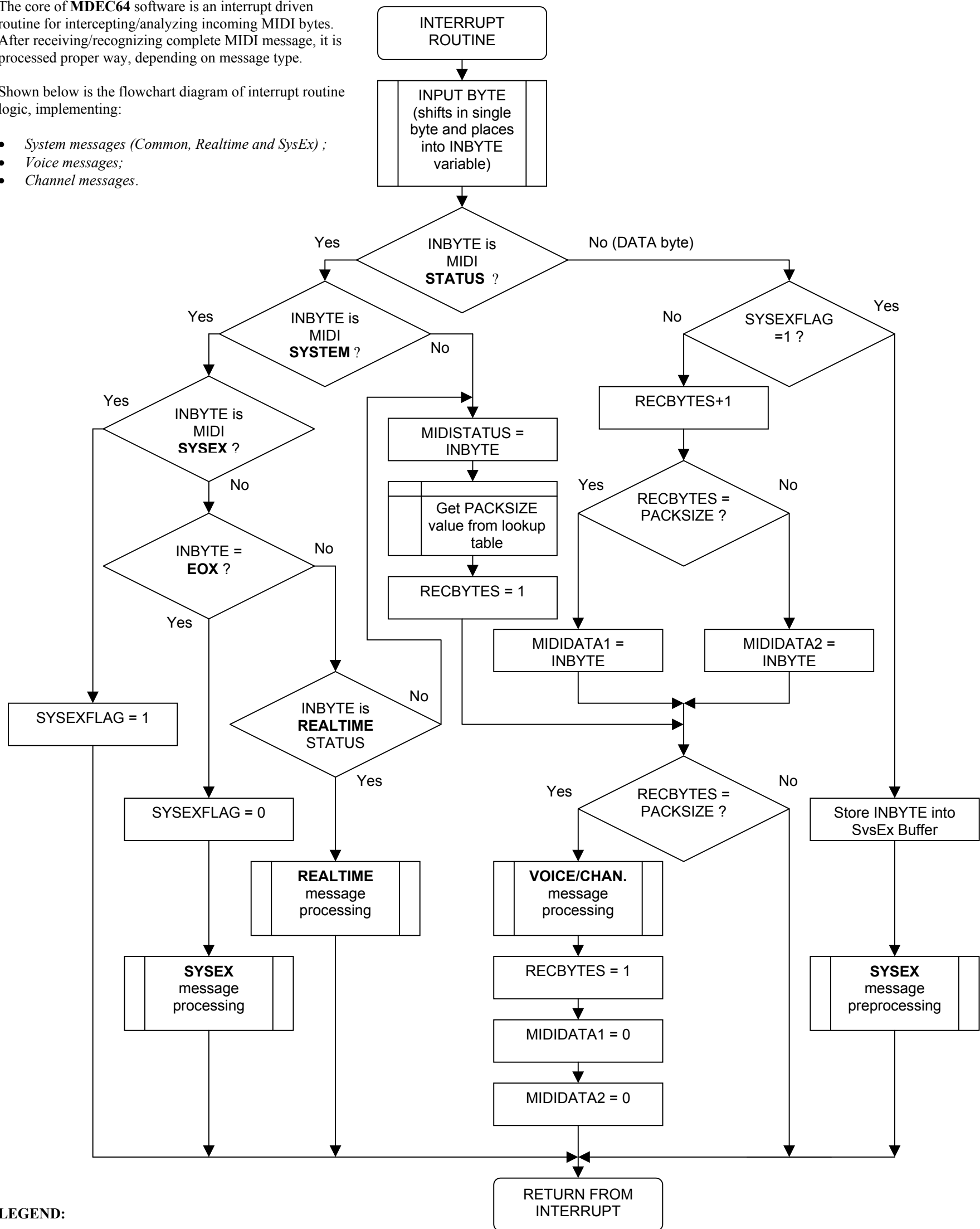


The core of **MDEC64** software is an interrupt driven routine for intercepting/analyzing incoming MIDI bytes. After receiving/recognizing complete MIDI message, it is processed proper way, depending on message type.

Shown below is the flowchart diagram of interrupt routine logic, implementing:

- System messages (Common, Realtime and SysEx) ;
- Voice messages;
- Channel messages.



LEGEND:

VARIABLES

- MIDISTATUS – MIDI status register
- MIDIDATA1 – MIDI data byte #1 register
- MIDIDATA2 – MIDI data byte #2 register
- SYSEXFLAG – SysEx mode flag (SysEx message is being received)
- RECBYTES – received bytes counter
- PACKSIZE – MIDI pack size (fetched from lookup table)
- INBYTE – input byte buffer